



ADDENDUM

04

Lancaster Township Police Department
Renovations & Addition
Lancaster, PA

Date of Addendum: 18 September, 2024
Marotta/Main Architects Project No.: 24-LT-01

The original Project Manuals and Drawings dated 28 August, 2024 for the project noted above, are amended as noted in this Addendum No. 04.

Receipt of this Addendum shall be acknowledged by inserting its number and date in the space provided on the Bid Form.

This Addendum consists of 3 Pages and all attachments listed.

CLARIFICATIONS

- 04.01 The GC should include the Builder's Risk insurance.
- 04.02 Clarifying that the roof deck does not receive a plywood overlay.
- 04.03 For Owner contracted Pye Barker (security) and App-Techs work, GC, and subs to provide rough-in only.
- 04.04 New electrical conduits in areas of existing masonry walls can be surface mounted.

VOLUME 1 – LEGAL SPECIFICATIONS

- 04.05 Refer to Specification Section INDEX, ADD the following section to the index: 07 46 16 ALUMINUM SIDING, 3 pages.

VOLUME 2 – TECHNICAL SPECIFICATIONS

- 04.06 Refer to Specification Section 07 46 16 ALUMINUM SIDING, ADD to specifications.
- 04.07 Refer to Specification Section 08 51 13 ALUMINUM TRANSACTION WINDOWS, Framing to be aluminum, Glazing to be Level 3 Laminated Polycarb/Acrylic. Countertop is integral to the unit and is 36" x 18" x 1 ½".
- 04.08 Refer to Specification Section 10 14 23 PANEL SIGNAGE, refer to attached signage schedule.
- 04.09 Refer to Specification Section 10 50 20 CANOPIES, 2.6 FINISHES, REVISE finishes to allow for fluoropolymer coatings. Approved substitution is Airolite C800H.

DRAWINGS

- 04.10 Refer to Drawing AD1.1 LOWER AND UPPER LEVEL DEMOLITION FLOOR PLANS attached with clouded revisions.
- 04.11 Refer to Drawing A1.2 LOWER AND UPPER LEVEL FLOOR PLANS attached for clouded revisions.

- 04.12 Refer to Drawing A/A2.2 EXTERIOR ELEVATIONS, 2/A2.2 WEST ELEVATION, W3 window shown in Lower Level in Room W. Locker 109 should be deleted and note added reading 'Tooth in brick, infill to match adjacent, brick sill to remain.'
- 04.13 Refer to Drawing A8.4 ENLARGED WORK ROOM AND STAFF KITCHEN PLANS AND ELEVATIONS, REVISE note at 9/A8.4 to read Plastic Laminate Countertop'.
- 04.14 Refer to Drawing A10.1 FINISH SCHEDULE, DELETE note 18. No corner guards are required on the project.
- 04.15 Refer to Drawing A10.1 FINISH SCHEDULE, FINISH LEGEND, FLOOR FINISHES, REVISE note for concrete to read ' EXISTING AND NEW INTERIOR CONCRETE TO BE EXPOSED SHALL RECEIVE A WATER-BASED LIGUID SEALER WITH SLIP RESISTANCE, BASIS-OF-DESIGN W.R. MEADOW DECK-O-GRIP W/B.'
- 04.16 Refer to Drawing D0.1 HVAC COVER SHEET, LOWER LEVEL DEMO KEY NOTES, REVISE Note 14 to read as follows: EXISTING UNDERGROUND SANITARY ACCESS AND PIPING TO REMAIN FOR CONNECTION OF NEW FIXTURES. CONTRACTOR SHALL SURVEY ALL OF THE EXISTING SANITARY PIPING TO VERIFY THE ACTUAL LOCATION OF ACCESS AND UNDERGROUND PIPING. **FOR BIDDING PURPOSES, INSTALL NEW SANITARY BACK TO THE INDICATED WITH THE 14 NOTE TAG.'**
- 04.17 Refer to Drawing M0.1 HVAC COVER SHEET, ADD note to Mini Split Heat Pump Schedule Notes: '5. PROVIDE WALL BRACKETS FOR MOUNTING UNITS TO EXISTING MASONRY WALL.'
- 04.18 Refer to Drawing P1.1, Lower Level Domestic Water Plan, add note to the area of New 1 ¼" Domestic Incoming Water Service – ADD 'COST TO UPSIZE WATER MAIN SHOULD NOT BE INCLUDED IN BID'. The known work is limited to rerouting the water line at the exterior of the building into the Lounge and Training Room 107.
- 04.19 Refer to Drawing 2 OF 6 LAYOUT PLAN, ADD note to the east side of the existing building to read as follows: 44" x 94" X 4" CONCRETE PAD FOR GENERATOR TO COORDINATE WITH MODEL SPECIFIED ON E DRAWINGS, (2) 30" X 30" X 4" CONCRETE PADS FOR CU UNITS, COORDINATE WITH MODEL SPECIFIED ON M DRAWINGS.
- 04.20 Refer to Drawing 5 of 6 SITE DETAILS, 8/5 CONCRETE STEPS, no wing wall is required on the site steps, follow Drawing 2 of 6 LAYOUT PLAN.

END OF ADDENDUM 04

Respectfully Submitted,

Connie King, AIA, ALEP, GGB
Principal Architect
Marotta/Main Architects, Inc.

Attachments:

07 46 16 ALUMINUM SIDING

10 14 23 PANEL SIGNAGE – SIGN SCHEDULE

AD1.1 LOWER AND UPPER LEVEL DEMOLITION FLOOR PLANS

A1.2 LOWER AND UPPER LEVEL FLOOR PLANS

A9.1 DOOR AND WINDOWS SCHEDULES & TYPES & DETAILS

SECTION 07 46 16 - ALUMINUM SIDING, ADDENDUM 04

PART 1 - GENERAL

1.1 SUMMARY

- A. Section Includes:
 - 1. Aluminum siding.
- B. Related Requirements:
 - 1. Section 06 10 00 "Rough Carpentry" for wood furring, grounds, nailers, and blocking.

1.2 COORDINATION

- A. Coordinate siding installation with flashings and other adjoining construction to ensure proper sequencing.

1.3 ACTION SUBMITTALS

- A. Product Data:
 - 1. Aluminum siding.
- B. Product Data Submittals: Include construction details, material descriptions, dimensions of individual components and profiles, and finishes.
- C. Samples for Initial Selection: For aluminum siding [and] soffit including related accessories.
- D. Samples for Verification: For each type, color, texture, and pattern required.
 - 1. 12-inch- (300-mm-) long-by-actual-width Sample of siding.

1.4 INFORMATIONAL SUBMITTALS

- A. Product Certificates: For each type of aluminum siding **[and]** soffit.
- B. Research/Evaluation Reports: For each type of aluminum siding required, from ICC-ES.
- C. Sample Warranty: For special warranty.

1.5 CLOSEOUT SUBMITTALS

- A. Maintenance Data: For each type of product, including related accessories, to include in maintenance manuals.

1.6 MAINTENANCE MATERIAL SUBMITTALS

- A. Furnish extra materials that match products installed and that are packaged with protective covering for storage and identified with labels describing contents.
 - 1. Furnish full lengths of aluminum siding **[and]** soffit including related accessories, in a quantity equal to 2 percent of amount installed.

1.7 DELIVERY, STORAGE, AND HANDLING

- A. Deliver and store packaged materials in original containers with labels intact until time of use.
- B. Store materials on elevated platforms, under cover, and in a dry location.

24-LT-01 LANCASTER TOWNSHIP POLICE DEPARTMENT ADDITIONS & RENOVATIONS

1.8 WARRANTY

- A. Special Warranty: Manufacturer agrees to repair or replace products that fail in materials or workmanship within specified warranty period.
 - 1. Failures include, but are not limited to, the following:
 - a. Structural failures including cracking, fading, and deforming.
 - b. Deterioration of metals, metal finishes, and other materials beyond normal weathering.
 - 2. Fading is defined as loss of color, after cleaning with product recommended by manufacturer, of more than **5** Hunter color-difference units as measured in accordance with ASTM D2244.
 - 3. Warranty Period: 25 years from date of Substantial Completion.

PART 2 - PRODUCTS

2.1 SOURCE LIMITATIONS

- A. Obtain products, including related accessories, from single source from single manufacturer.

2.2 ALUMINUM SIDING

- A. Aluminum Siding: Formed and coated product complying with AAMA 1402.
 - 1. Basis-of-Design: MBCI FW-120-1 Flat Panel with bead concealed fastening aluminum siding.
- B. Vertical Pattern: 12-inch (300-mm) exposure in flat panel style.
- C. Texture: Smooth.
- D. Nominal Thickness: 24 gauge.
- E. Finish: Manufacturer's standard primer and baked-on polyester.
 - 1. Colors: As selected by Architect from manufacturer's full range of colors.

2.3 ACCESSORIES

- A. Siding Accessories, General: Provide starter strips, edge trim, outside and inside corner caps, and other items as recommended by siding manufacturer for building configuration.
 - 1. Provide accessories made from the same material as adjacent siding unless otherwise indicated.
- B. Aluminum Accessories: Where aluminum accessories are indicated, provide accessories complying with AAMA 1402.
 - 1. Texture: Smooth .
 - 2. Nominal Thickness: 24 gauge.
 - 3. Finish: Manufacturer's standard primer, Basis-of-Design Signature 300 baked-on polyester.
- C. Colors for Decorative Accessories: As selected by Architect from manufacturer's full range of colors.
- D. Flashing: Provide aluminum flashing complying with Section 07 62 00 "Sheet Metal Flashing and Trim" at door heads and where indicated.
 - 1. Finish for Aluminum Flashing: Same as aluminum siding.
- E. Fasteners:
 - 1. For fastening to wood, use manufacturer's recommended fasteners of sufficient length to penetrate a minimum of 1 inch (25 mm) into substrate.

PART 3 - EXECUTION

3.1 EXAMINATION

- A. Examine substrates for compliance with requirements for installation tolerances and other conditions affecting performance of aluminum siding **[and]** soffit and related accessories.

24-LT-01 LANCASTER TOWNSHIP POLICE DEPARTMENT ADDITIONS & RENOVATIONS

- B. Proceed with installation only after unsatisfactory conditions have been corrected.

3.2 PREPARATION

- A. Clean substrates of projections and substances detrimental to application.

3.3 INSTALLATION

- A. General: Comply with manufacturer's written installation instructions applicable to products and applications indicated unless more stringent requirements apply.
 - 1. Center nails in elongated nailing slots without binding siding to allow for thermal movement.
- B. Install aluminum siding and related accessories in accordance with AAMA 1402.
 - 1. Install fasteners no more than 24 inches o.c.
- C. Install joint sealants as specified in Section 07 92 00 "Joint Sealants" and to produce a weathertight installation.
- D. Where aluminum siding contacts dissimilar metals, protect against galvanic action by painting contact surfaces with primer or by applying sealant or tape or installing nonconductive spacers as recommended by manufacturer for this purpose.

3.4 ADJUSTING AND CLEANING

- A. Remove damaged, improperly installed, or otherwise defective materials and replace with new materials complying with specified requirements.
- B. Clean finished surfaces in accordance with manufacturer's written instructions and maintain in a clean condition during construction.

END OF SECTION 07 46 16

Lancaster Township Police Department

Renovations & Additions

Panel Signage Schedule (10 14 23)

TYPE A Room Identification Size 6" x 6"

Room #

101	Secure Evidence
104	Server Room
105	Mech/Elect Room
106	Records
108	Armory
109	Women's Locker Room
111	Men's Locker Room
210	Public Information
202	Interview
204	Police Chief
205	Conference Room
208	Detective
209	Holding
212	Patrol Room
214	Supervisor

TYPE B ADA Restrooms 8" x 8"

213

216

TYPE C ADA Accessible Entrances 8" x 8"

200

TYPE D ADA Directional Signs 8" x 8"

100 Accessible Entrance (w/ arrow)

TYPE E Tactile EXIT Signs 3" x 6"

100

107

200

201

210

211-1

211

1

- 2**

3

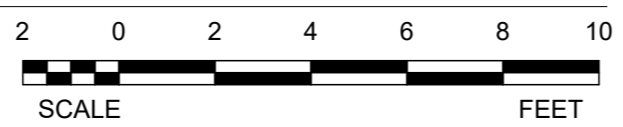
4

- 5**

6

- 7**

1 LOWER LEVEL DEMOLITION



A horizontal scale bar with alternating black and white segments. Above the bar, the numbers 2, 0, 2, 4, 6, 8, and 10 are printed. Below the bar, the word 'SCALE' is on the left and 'FEET' is on the right. The bar represents a total length of 10 feet.



POLICE DEPARTMENT

LANCASTER TOWNSHIP

1250 MAPLE AVE.

LANCASTER, PA 17603

[illegible]

PROJ #: 24-LT-01 DRAWN BY: CPD

LOWER AND UPPER LEVEL DEMOLITION FLOOR PLANS

SHEET NUMBER

AD1.1

BID SET

SEAL:

CONSULTANT:



THIS DRAWING IS THE PROPERTY OF THE ARCHITECT AND MAY NOT BE PRODUCED IN





MAROTTA / MAIN
ARCHITECTS



WWW.MAROTTAMAIN.COM





1. DIMENSIONS TAKEN TO FACE OF STUD OR FACE OF CMU, U.O.
2. ALL NEW PARTITIONS SHALL BE PER PARTITION TYPE P4, U.O.
3. REFER TO FINISH SCHEDULE FOR WALL FINISHES.
4. ALL INTERIOR PARTITIONS ARE TO EXTEND TIGHT TO THE FLOOR OR ROOF DECK ABOVE, U.O.
5. ALL DIMENSIONS MARKED "CLEAR" SHALL BE MAINTAINED.
6. NO PARTITIONS SHALL VARY MORE THAN 1/8" IN SURFACE PLANE IN 10 FEET IN ANY DIRECTION.
7. ALL INTERIOR WALLS IN OCCUPIED AREAS AND PUBLIC AREAS TO A MINIMUM OF 8'-0" ABOVE FINISHED FLOOR MUST BE HIGH ABUSE-RESISTANT TYPE GYPSUM BOARD.
8. ALL EXPOSED CMU WALLS SHALL HAVE A BULLNOSED EDGE. RADIUSED CEILING EDGE TRACK SHALL BE PROVIDED ACCORDINGLY.
9. SEAL FUL PERIMETER OF GWB/STUD WALLS WITH ACOUSTIC SEALANT.
10. PROVIDE CONTROL JOINTS PER THE SPECIFICATION AT INTERIOR CMU WALLS FOR WALL LENGTHS GREATER THAN 20'. PROVIDE CONTROL JOINTS BETWEEN STUD WALLS ON FLOOR SLABS AND WALLS ON FOOTINGS. REFER TO TYPICAL CONTROL JOINT DETAILS FOR ADDITIONAL CONTROL JOINT INFORMATION.

INTERIOR PARTITIONS



- | | | |
|---|---|---|
|  |  | 1 1/2" HAT CHANNEL WALL GWB
5/8" ONE SIDE |
|  |  | 3 5/8" MTL. STUDS W/ 5/8" GWB
F.S. FILL W/ACOUSTIC BATT INSULATION |

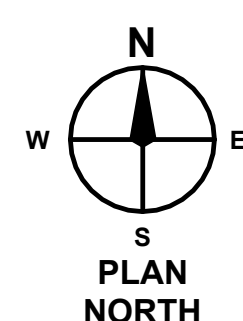
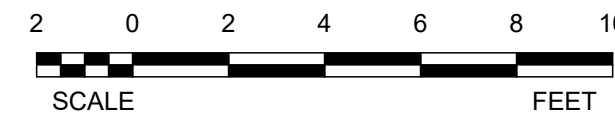
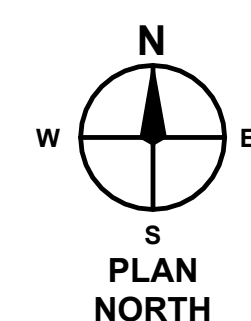
-   C.M.U. INFILL TO MATCH EXISTING WALL THICKNESS. MATCH EXISTING FIRE-RATING, WHERE APPLICABLE.

- | | | |
|---|-----|--|
|  | M4 | 4" C.M.U. |
|  | M6 | 6" C.M.U. |
|  | M8 | 8" C.M.U. |
|  | M12 | 12" C.M.U., FILL CORES WITH VERMICULITE INSULATION |

PROJECT INTAIL SCHEDULE (U.O.O ON PLANS/DETAILS)	
INTERIOR MASONRY WALLS	
LINTEL	MASONRY OPENING
0" < M.O. < 6'-4" (4", 8", 12", 16", 20" CMU)	P.C. 4x8 PER 4" OF WALL THICKNESS (4", 8", 12", 16", 20" CMU)
0" < M.O. < 6'-4" (6" CMU)	P.C. 6x8
10'-8" < M.O. < 16'-0" (6" CMU)	W8x21 + 3/8" CONT. PL x WIDTH OF WALL
0" < M.O. < 16'-0" (8", 12", 16" CMU)	W16x26 + 3/8" CONT. PL x WIDTH OF WALL
0" < M.O. < 6'-4" (10" CMU)	P.C. 6x8 + P.C. 4x8
6'-4" < M.O. < 10'-8" (10" CMU)	W8x24 + 3/8" CONT. PL x WIDTH OF WALL
0" < M.O. < 16'-0" (10" CMU)	W16x26 + 3/8" CONT. PL x WIDTH OF WALL
EXTERIOR MASONRY WALLS	
LINTEL	MASONRY OPENING
0" < M.O. < 6'-8" (4", 8", 12", 16" CMU + BRICK)	P.C. 4x8 PER 4" OF WALL THICKNESS + L5x3 1/2x16 LLV LOOSE
0" < M.O. < 10'-8" (6"-8" CMU + 8"-8" BRICK)	PL x WIDTH OF WALL P.C. 4x8 PER 4" OF WALL THICKNESS + L6x4x5/16 LLV LOOSE
10'-8" < M.O. < 16'-0" (8", 12", 16" CMU)	W16x26 + 3/8" CONT. PL x WIDTH OF WALL

NOTES:

1. ALL STEEL LINTELS IN EXTERIOR WALLS TO BE GALVANIZED.
2. P.C. LINTELS TO BE REINFORCED WITH #3 TOP & #4 BOTTOM U.O.N.O.
3. PROVIDE MIN. 8" BEARING EACH END OF LINTEL U.O.N.O.
4. PROVIDE MIN. 12" BEARING EACH END OF LINTEL IF MORE THAN 16" MASONRY EXISTS BETWEEN MASONRY OPENING & FACE OF COLUMN. USE STEEL ANGLES IN LIEU OF P.C. LINTELS AT THESE LOCATIONS.
5. LINTELS ARE REQUIRED AT OPENINGS OF MORE THAN 12" FOR BRICK-SIZE UNITS AND 24" FOR BLOCK-SIZE UNITS UNLESS 1" OR FEWER THICKNESS OF MASONRY EXISTS BETWEEN ADJACENT OPENINGS. THEY SHALL BE CONSIDERED AS ONE SINGLE OPENING.
6. REFER TO G/S-2.1 FOR TYPICAL LINTEL DETAILS.



NOTES:

1. EXISTING UPPER LEVEL GYPSUM BOARD CEILING AND BATT INSULATION ABOVE TO BE REMOVED ONLY AS NEEDED FOR MEP WORK. PATCH OPENINGS AND REINSTALL BATT INSTALLATION.
2. PROVIDE 600 SF OF CEMENTITIOUS UNDERLAYMENT FOR FLOOR PREP AT UPPER LEVEL.

CONSULTANT:

RENOVATIONS/ ADDITION FOR THE
POLICE DEPARTMENT

LANCASTER TOWNSHIP
1250 MAPLE AVE.
LANCASTER, PA 17603

ISSUE DATES	
DATE:	DESCRIPTION:
08/28/24 ¹²²⁴	BID SET
09/10/2024	PERMIT SET

PROJ #: 24-LT-01 DRAWN BY: CPD

LOWER AND UPPER LEVEL FLOOR PLANS

SHEET NUMBER

A1.2

BID SET

SEAL:



MAROTTA/MAIN
ARCHITECTS

WWW.MAROTTAMAIN.COM

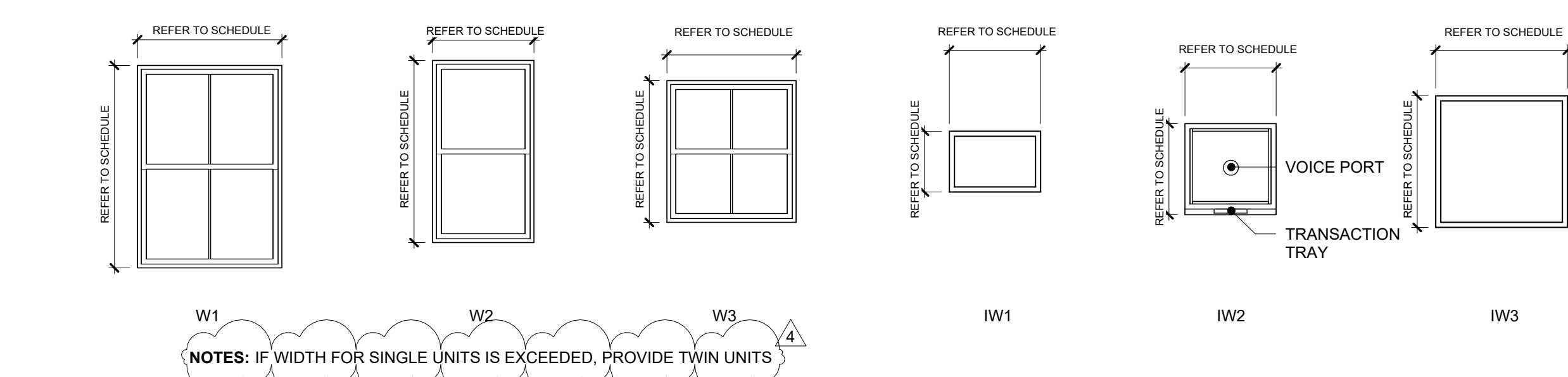
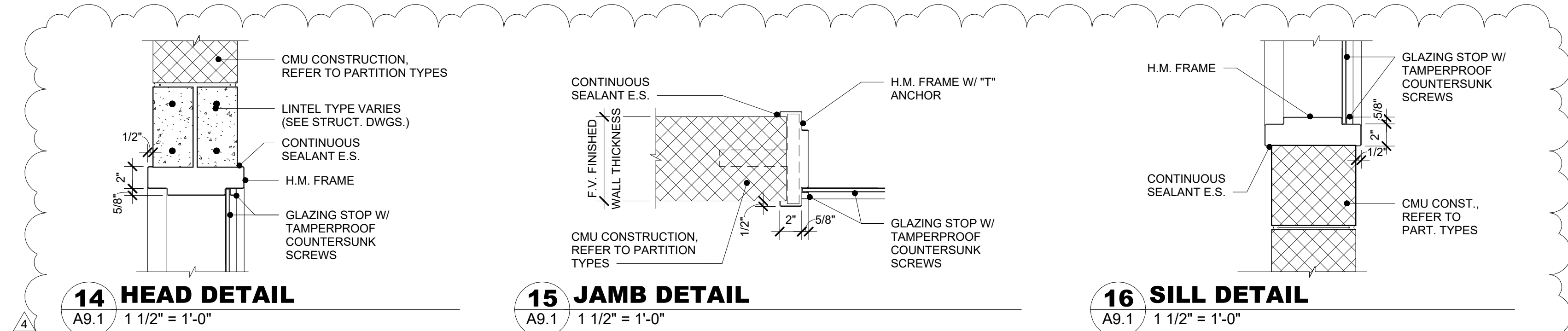
9/18/2024 12:55:52 PM

DOOR SCHEDULE												
DOOR NUMBER	DOOR SIZE			Door Types	DOOR MATERIAL	FIRE RATING	FRAME					COMMENTS
	WIDTH LEAF 1	LEAF 2	HEIGHT				FRAME TYPE	FRAME MATERIAL	HEAD	JAMB	SILL	
LOWER LEVEL												
100	3'-0"	3'-0"	6'-8"	F	HM	-	HM1	HM	7			
101	3'-0"		6'-8"	F	HM	-	HM1	HM	3	4		
102	3'-0"		6'-8"	F	HM	-	HM1	HM	3	4		
104	3'-0"		6'-8"	F	HM	-	HM1	HM	3	4		
105	3'-0"		6'-8"	F	HM	-	HM1	HM	3	4		
106	3'-0"		6'-8"	F	HM	-	HM1	HM	10	11		
108	3'-0"		6'-8"	F	HM	-	HM1	HM	3	4		
109	3'-0"		6'-8"	F	HM	-	HM1	HM	3	4		
110	2'-8"		6'-8"	EX	HM	-	HM1	HM				EXIST. DOOR TO BE PAINTED
111	3'-0"		6'-8"	F	HM	-	HM1	HM	3	4		
112	3'-0"		6'-8"	F	HM	-	HM1	HM	10	11		
UPPER LEVEL												
200	3'-0"		6'-8"	G	HM	-	HM1	HM	8			
201	3'-0"		6'-8"	F	HM	-	HM1	HM	5	6		
202	3'-0"		6'-8"	F	HM	-	HM1	HM	5	6		
204	3'-0"		6'-8"	F	HM	-	HM1	HM	5	6		
205	3'-0"		6'-8"	F	HM	-	HM1	HM	3	4		
206	3'-0"		6'-8"	F	HM	-	HM1	HM	3	4		
208	3'-0"		6'-8"	F	HM	-	HM1	HM	5	6		
209	3'-0"		6'-8"	F	HM	-	HM1	HM	5	6		
210	3'-0"		6'-8"	F	HM	-	HM1	HM	3	4		
211	3'-0"		6'-8"	G	HM	-	HM1	HM	9			
211-1	3'-0"		6'-8"	F	HM	-	HM1	HM				
212	3'-0"		6'-8"	F	HM	-	HM1	HM	3	4		
213	3'-0"		6'-8"	F	HM	-	HM1	HM	3	4		
214	3'-0"		6'-8"	F	HM	-	HM1	HM	3	4		
215	2'-8"		6'-8"	F	HM	-	HM1	HM	3	4		
216	3'-0"		6'-8"	F	HM	-	HM1	HM	3	4		
A-ST1	3'-0"		6'-8"	F	HM	-	HM1	HM	5	6		

GENERAL DOOR AND FRAME NOTES

- UNDERCUT DOORS AS REQUIRED TO OPERATE SMOOTHLY OVER FINISHED FLOOR. MAXIMUM UNDERCUT SHALL BE 1/4", UNLESS NOTED OTHERWISE. FINISH BOTTOM OF DOORS AFTER UNDERCUTTING.

WINDOW SCHEDULE												
Type Mark	R.O.		Type	Basis of Design Manufacturer	Model	Head	Jamb	Sill	Head Heights	Glazing		Comments
	Width	Height								Thickness	Type	
IW1	2'-0"	3'-0"	HM			14/A9.1	15/A9.1	16/A9.1	VARIES			CLEAR FULLY TEMPERED SILL AT 40" FROM F.O.F.
IW2	3'-0"	3'-0"	Altum. Transaction	Total Security Solutions		14/A9.1	15/A9.1	16/A9.1	VARIES			SECURITY TRANSACTION WINDOW
IW3	4'-0"	4'-0"	HM			14/A9.1	15/A9.1	16/A9.1	VARIES			CLEAR FULLY TEMPERED SILL AT 40" FROM F.O.F.
W1	4'-8"	5'-5"	Fiberglass Single Hung	Marvin Windows and Doors	Essentials				VARIES			REF SPECS
W2	3'-4"	6'-0"	Fiberglass Single Hung	Marvin Windows and Doors	Essentials				VARIES			
W3	4'-3"	4'-8"	Fiberglass Single Hung	Marvin Windows and Doors	Essentials				VARIES			



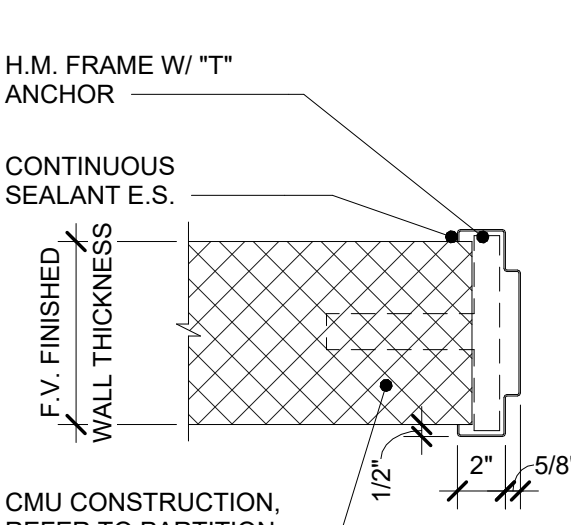
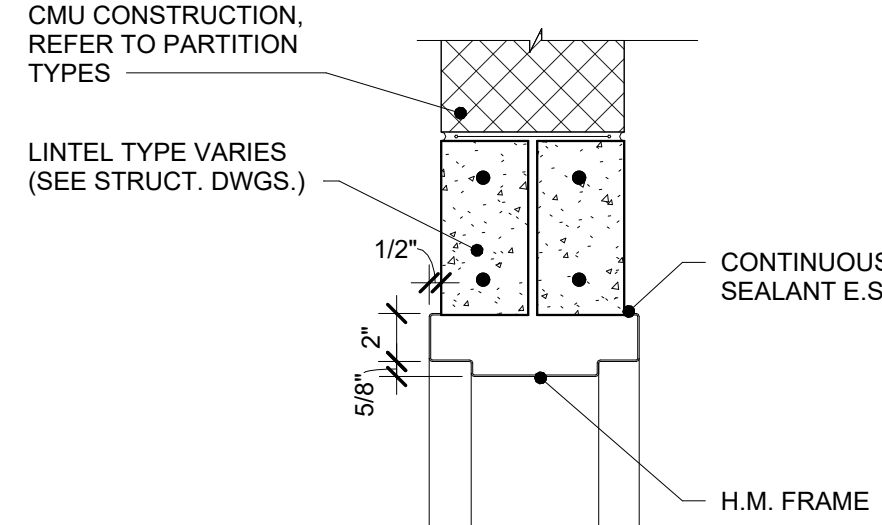
WINDOW TYPES

1 DOOR TYPES

A9.1 1/4" = 1'-0"

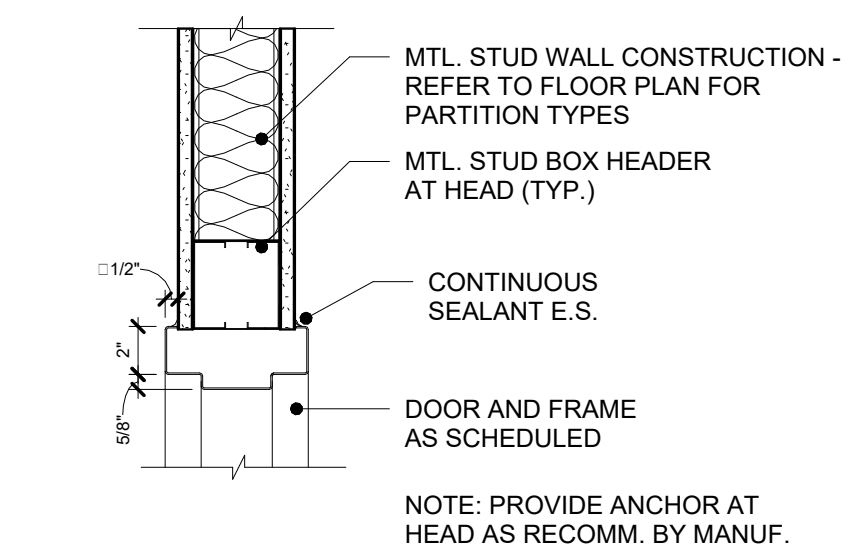
2 HOLLOW METAL FRAME TYPES

A9.1 1/4" = 1'-0"



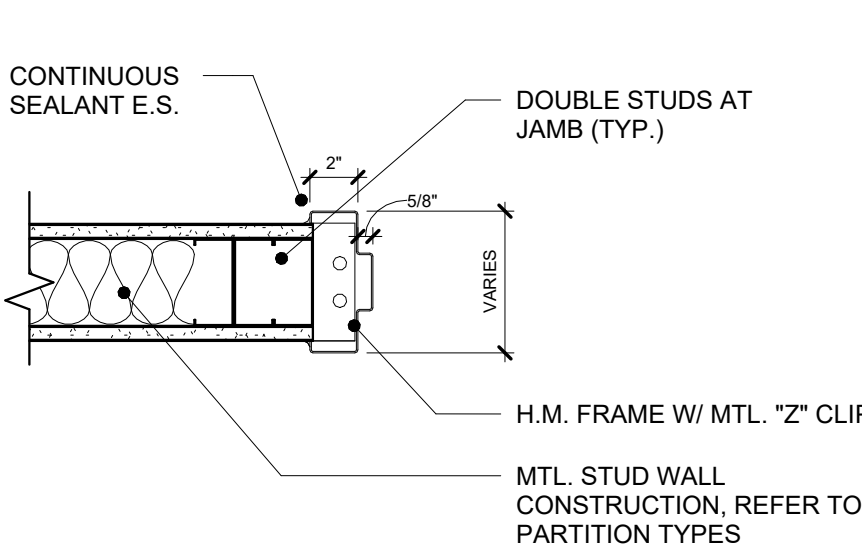
5 HEAD DETAIL

A9.1 1 1/2" = 1'-0"



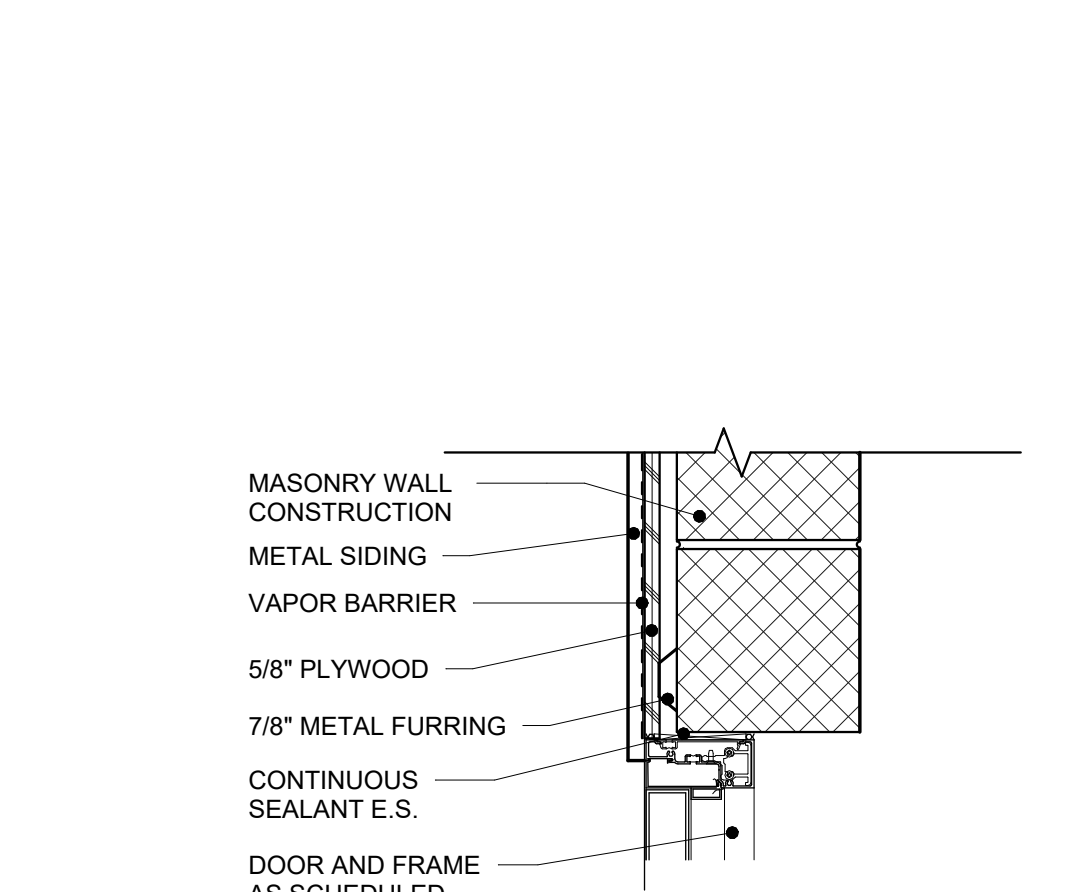
6 JAMB DETAIL

A9.1 1 1/2" = 1'-0"



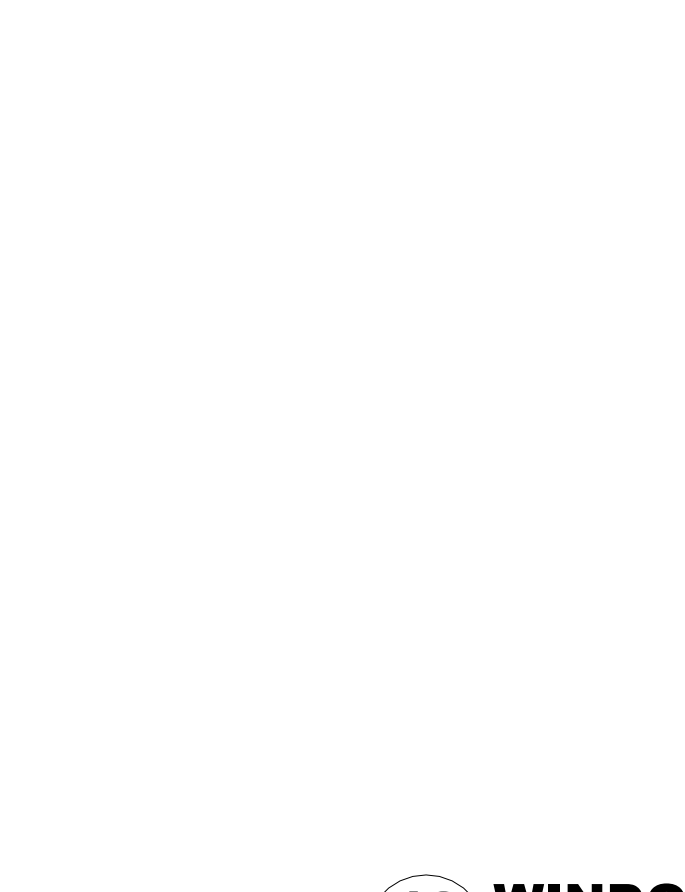
10 HEAD DETAIL

A9.1 1 1/2" = 1'-0"



11 JAMB DETAIL

A9.1 1 1/2" = 1'-0"

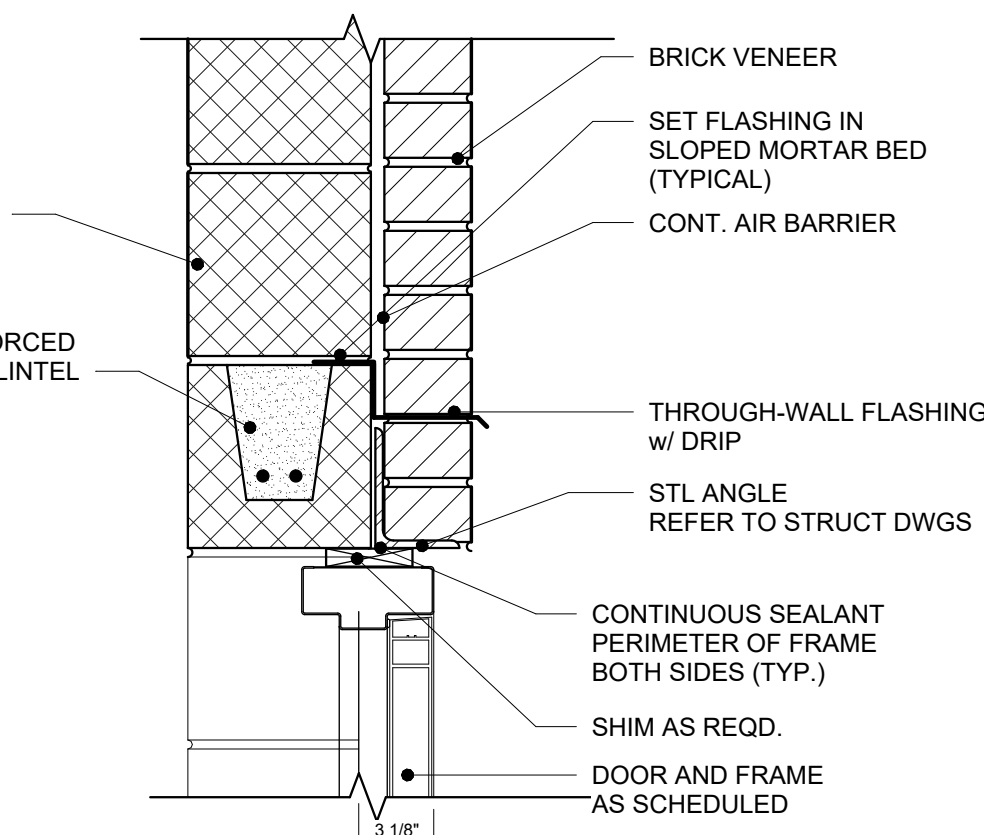
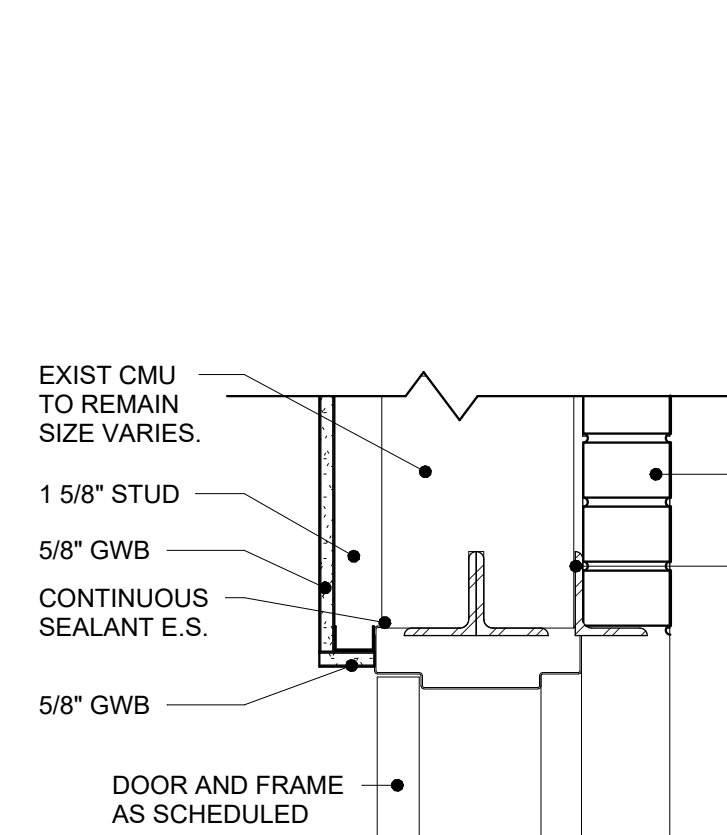


12 WINDOW HEAD, JAMB, AND SILL DETAILS W/ FURRING

A9.1 1 1/2" = 1'-0"

13 TYP. WINDOW HEAD, JAMB, AND SILL DETAILS

A9.1 1 1/2" = 1'-0"



9 HEAD DETAIL

A9.1 1 1/2" = 1'-0"

DOOR AND WINDOW SCHEDULES AND TYPES & DETAILS

CONSULTANT:

RENOVATIONS/ ADDITION FOR THE
POLICE DEPARTMENT

LANCASTER TOWNSHIP
1250 MAPLE AVE.
LANCASTER, PA 17603

ISSUE DATES		DESCRIPTION:	
DATE:	BID SET	DATE:	PERMIT SET
08/26/24		09/10/2024	
		09/18/2024	ADDENDUM 4
PROJ #1: 2447-01		DRAWN BY: CPD	
SHEET TITLE:			
DOOR AND WINDOW SCHEDULES AND TYPES & DETAILS			
SHEET NUMBER:			

A9.1
BID SET



MAROTTA/MAIN
ARCHITECTS
WWW.MAROTTAMAIN.COM