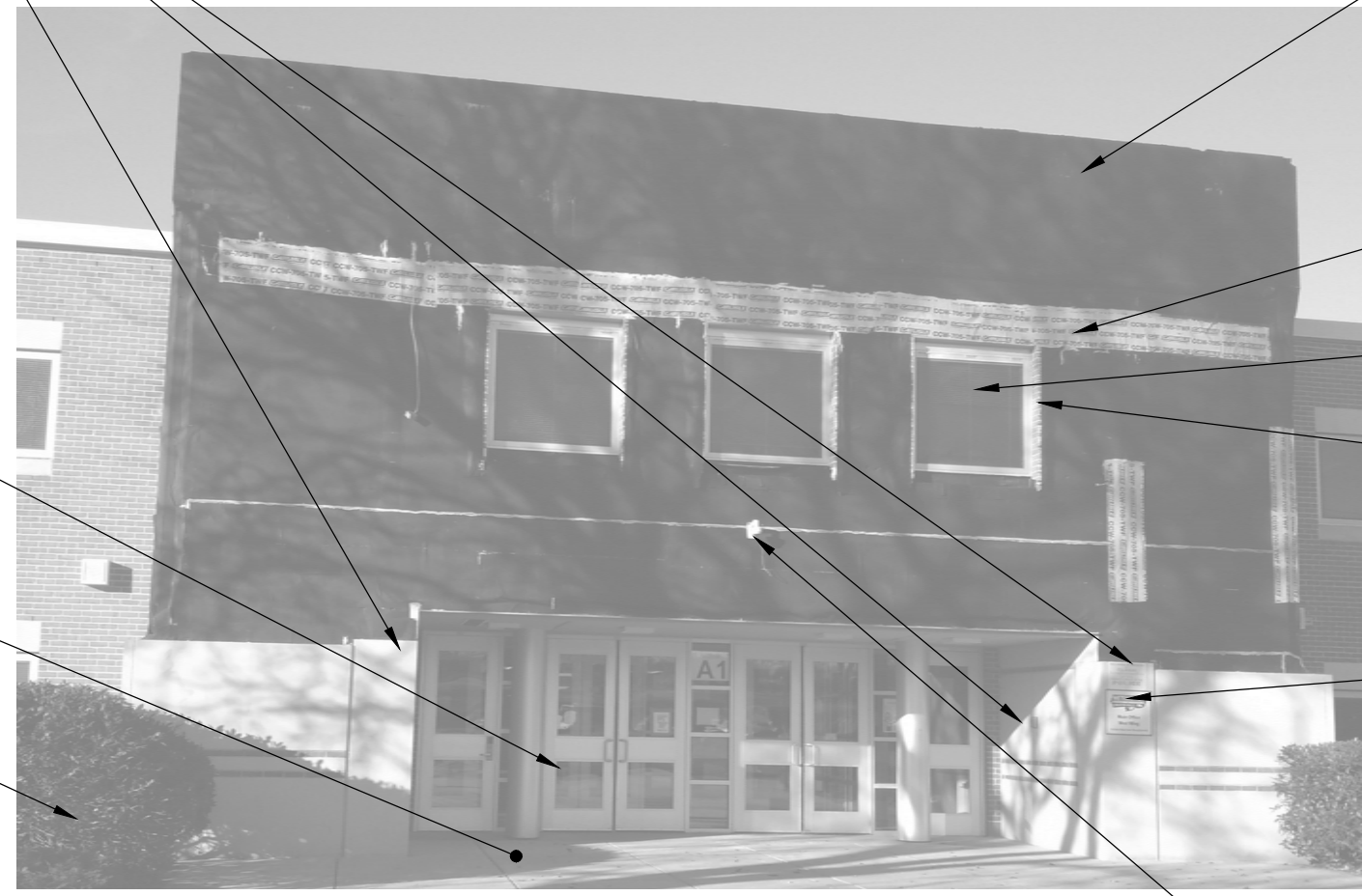


REMOVE EXISTING STONE UNITS AND BRICK BANDING AT FRONT, EAST AND WEST RETURNS AND SIDES UNDER OVERHANG IN THEIR ENTIRETY. INSTALL NEW AIR BARRIER TO MATCH EXISTING DOWN TO GRADE. TIE INTO EXISTING AIR BARRIER PER MANUFACTURER'S RECOMMENDATION.

EXISTING ALUMINUM DOORS TO REMAIN INTACT AND UNDAMAGED. PROTECT AS REQUIRED DURING WORK. COORDINATE WITH OWNER FOR ACCESS REQUIREMENTS.

EXISTING SIDEWALK TO REMAIN INTACT AND UNDAMAGED. PROTECT AS REQUIRED DURING CONSTRUCTION WORK.

REMOVE EXISTING SHRUBS TO PROVIDE ACCESS TO FACADE. TYPICAL AT BOTH SIDES.



CONTRACTOR TO ENGAGE AIR & VAPOR BARRIER REPRESENTATIVE TO REVIEW EXISTING AIR/VAPOR BARRIER FOR DEFECTS AND INCONSISTENCIES. CORRECT ALL DEFECTS AS REQUIRED BY REPRESENTATIVE TO RESULT IN FULLY WARRANTED SYSTEM. ASSUME 25% RE-APPLICATION FOR BIDDING PURPOSES. EXISTING AIR/VAPOR BARRIER = CARLISLE, BARRISEAL-R.

REMOVE EXISTING PEEL AND STICK FLASHING AT EXISTING STEEL LOCATIONS. PREPARE, PRIME AND PAINT ALL EXISTING STEEL.

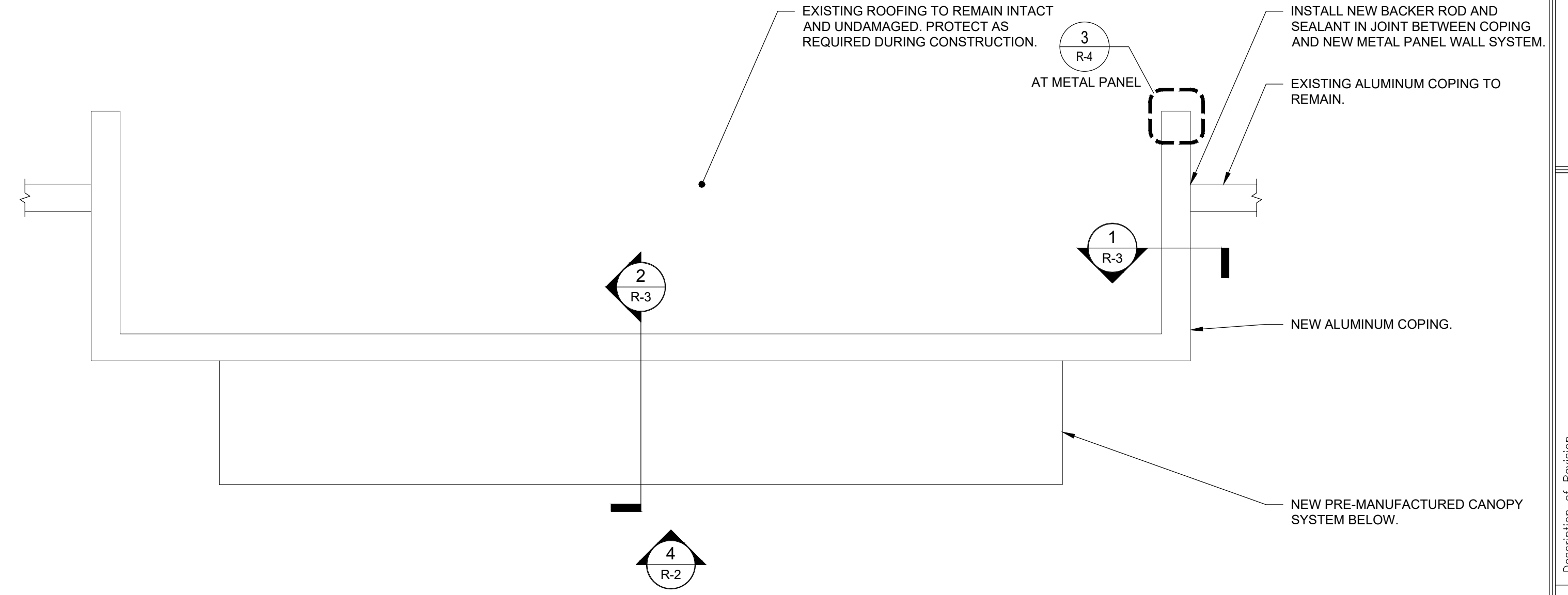
EXISTING WINDOWS TO REMAIN INTACT AND UNDAMAGED. PROTECT AS REQUIRED DURING CONSTRUCTION WORK.

REPOINT EXISTING BRICK AT JAMBS. RESET AS REQUIRED TO SECURE BRICK.

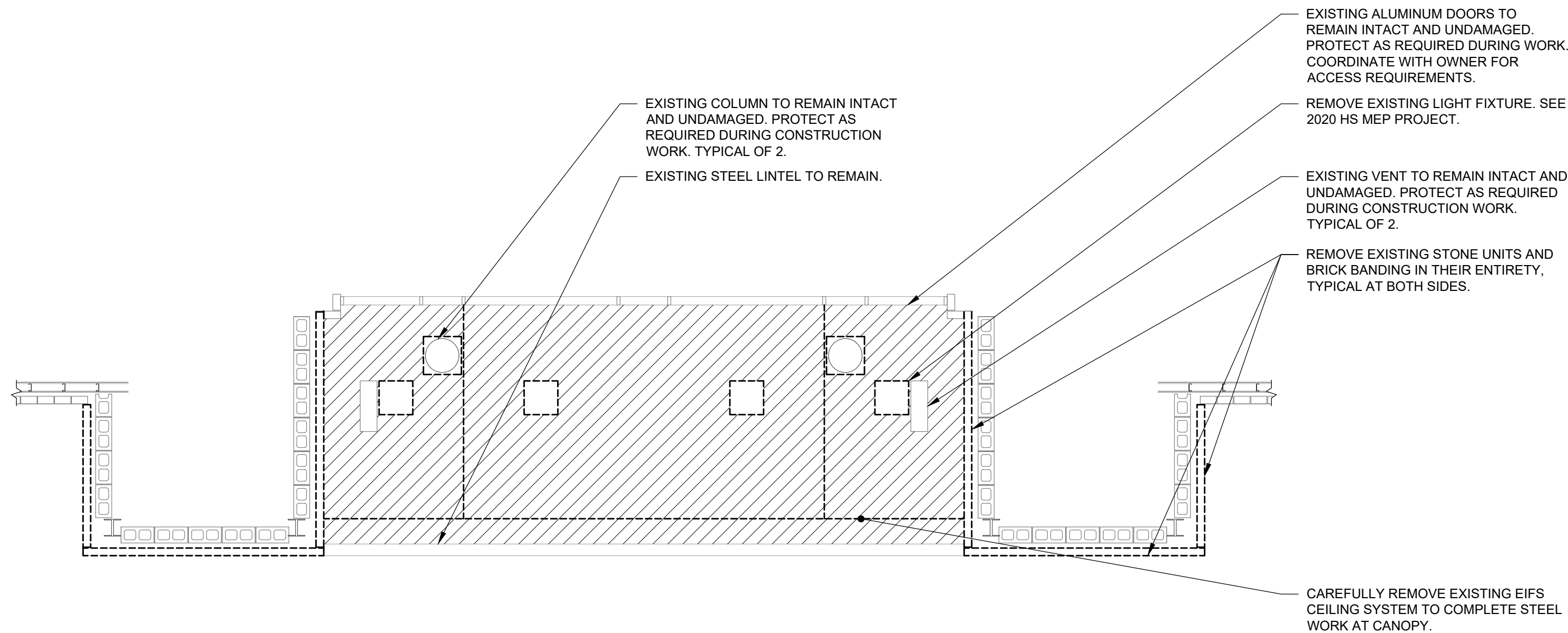
CAREFULLY REMOVE EXISTING SIGNS. TURN OVER TO OWNER.

EXISTING CAMERA. COORDINATE WORK WITH OWNER.

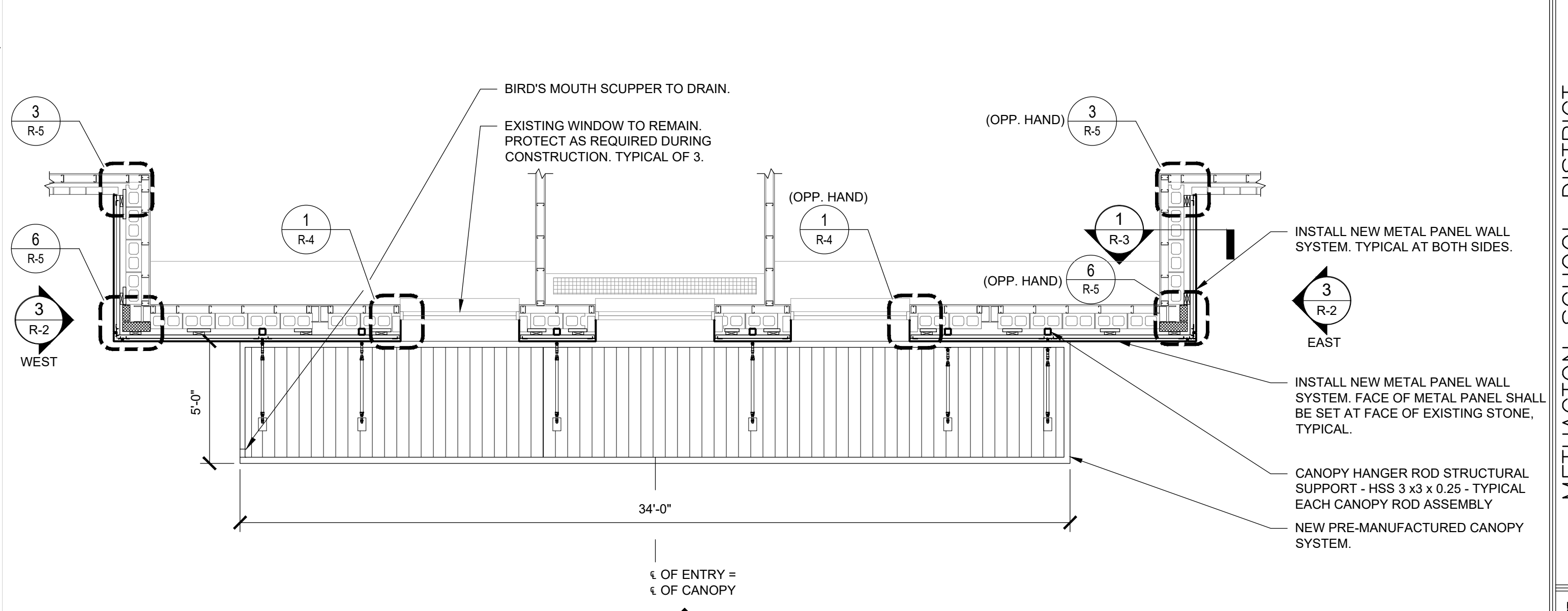
1 R-1 DEMOLITION
SCALE: 1/4" = 1'-0"



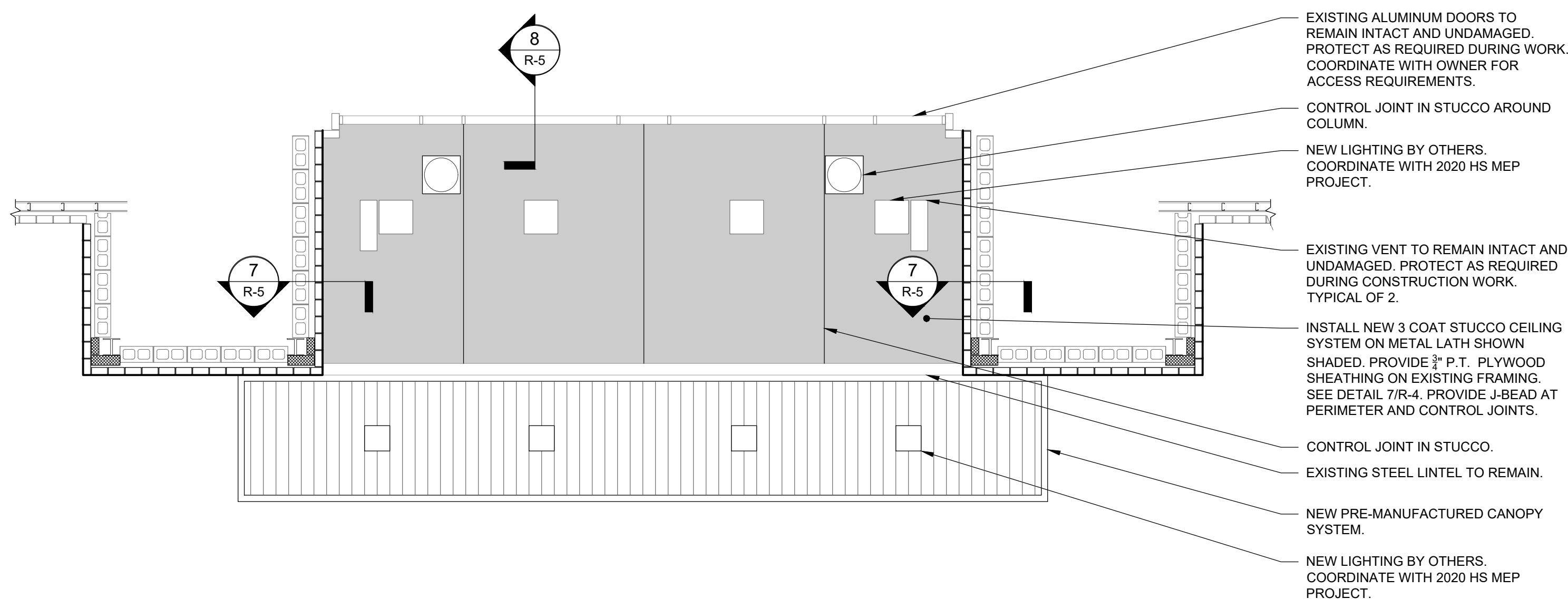
4 R-1 ROOF PLAN
SCALE: 1/4" = 1'-0"



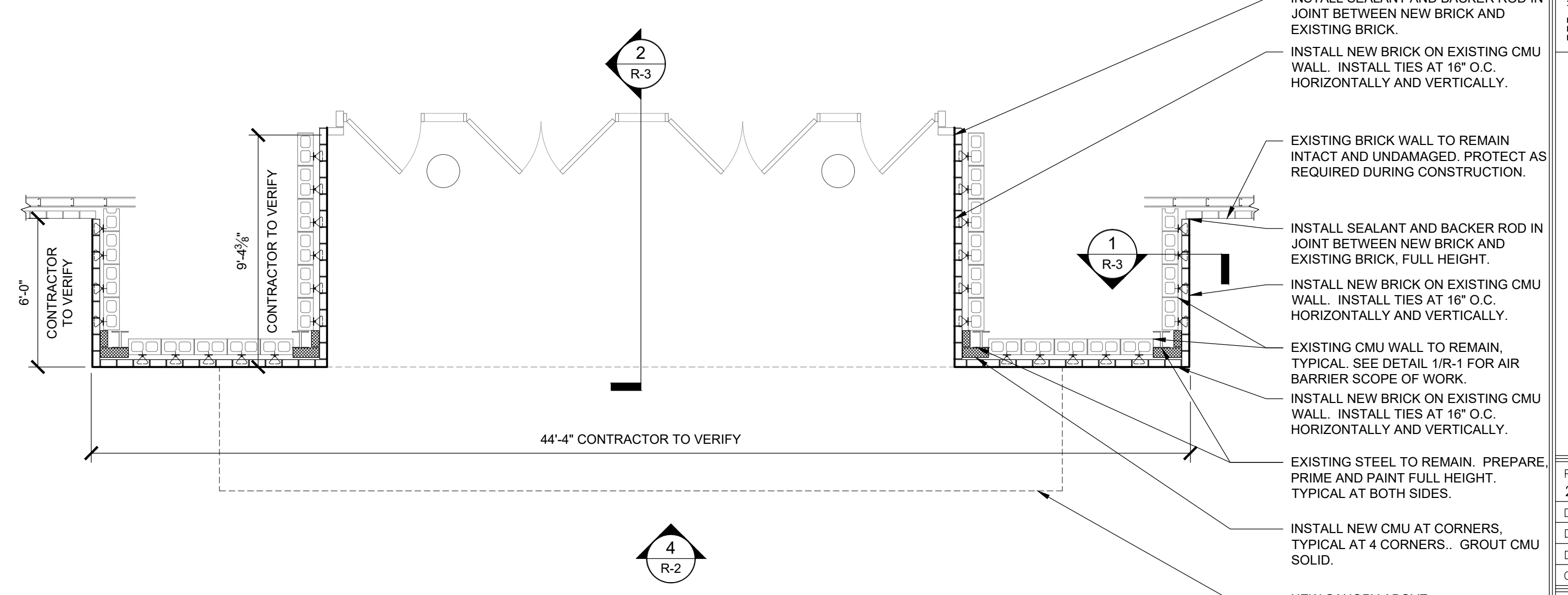
2 R-1 REFLECTED CEILING PLAN - DEMOLITION
SCALE: 1/4" = 1'-0"



5 R-1 SECOND FLOOR PLAN
SCALE: 1/4" = 1'-0"



3 R-1 REFLECTED CEILING PLAN - NEW WORK
SCALE: 1/4" = 1'-0"



6 R-1 FIRST FLOOR PLAN
SCALE: 1/4" = 1'-0"

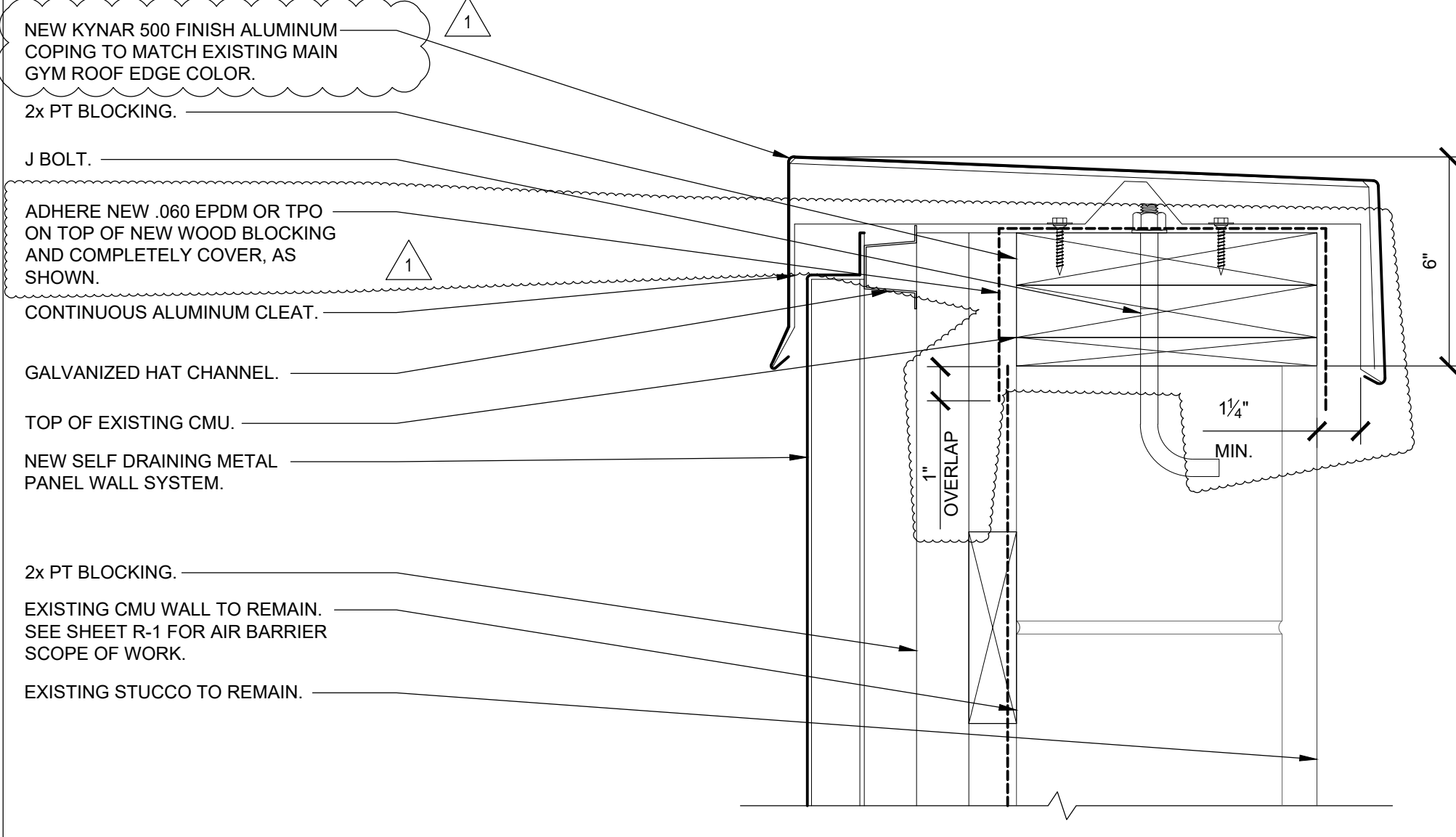
Rev. No.	Description of Revision
1	BID SET
2	ADDENDUM #1

METHACTON SCHOOL DISTRICT
METHACTON HIGH SCHOOL
1005 KRIEBEL MILL ROAD, EAGLEVILLE, PA
2020 HIGH SCHOOL FRONT ENTRY REPLACEMENT PROJECT (20.7.8)
REFERENCE PLAN AND DEMOLITION

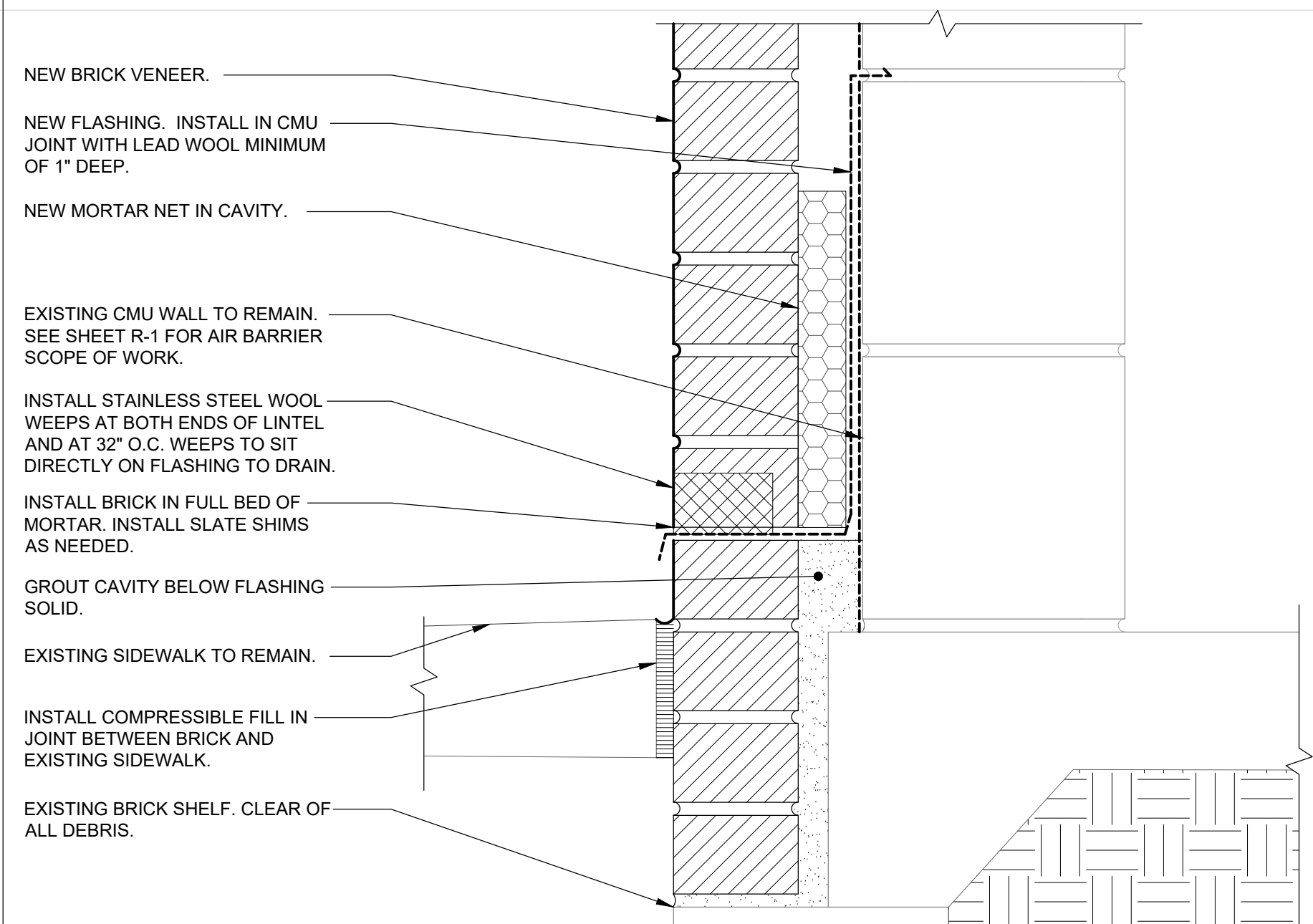
335 W. STATE STREET
FIRST FLOOR
MEDIA, PA 19063
Phone: 484-442-8137
Fax: 484-442-8139

Shepherd Restoration Engineers, Inc.
Caring for the Built Environment

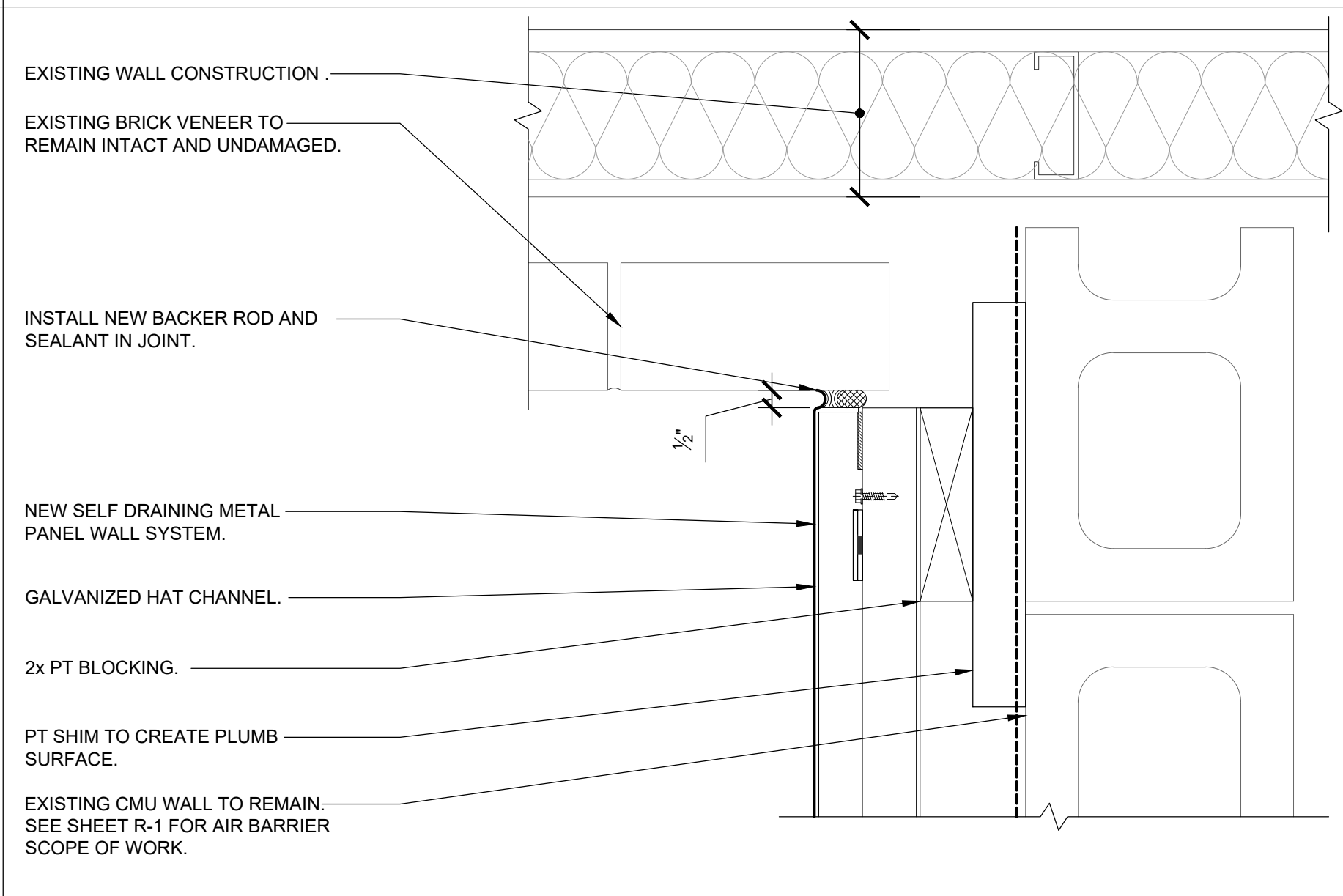
Project No.	2019.020
Date	1/7/2020
Designed	SJV
Drawn	AJG/WJG
Checked	TPS



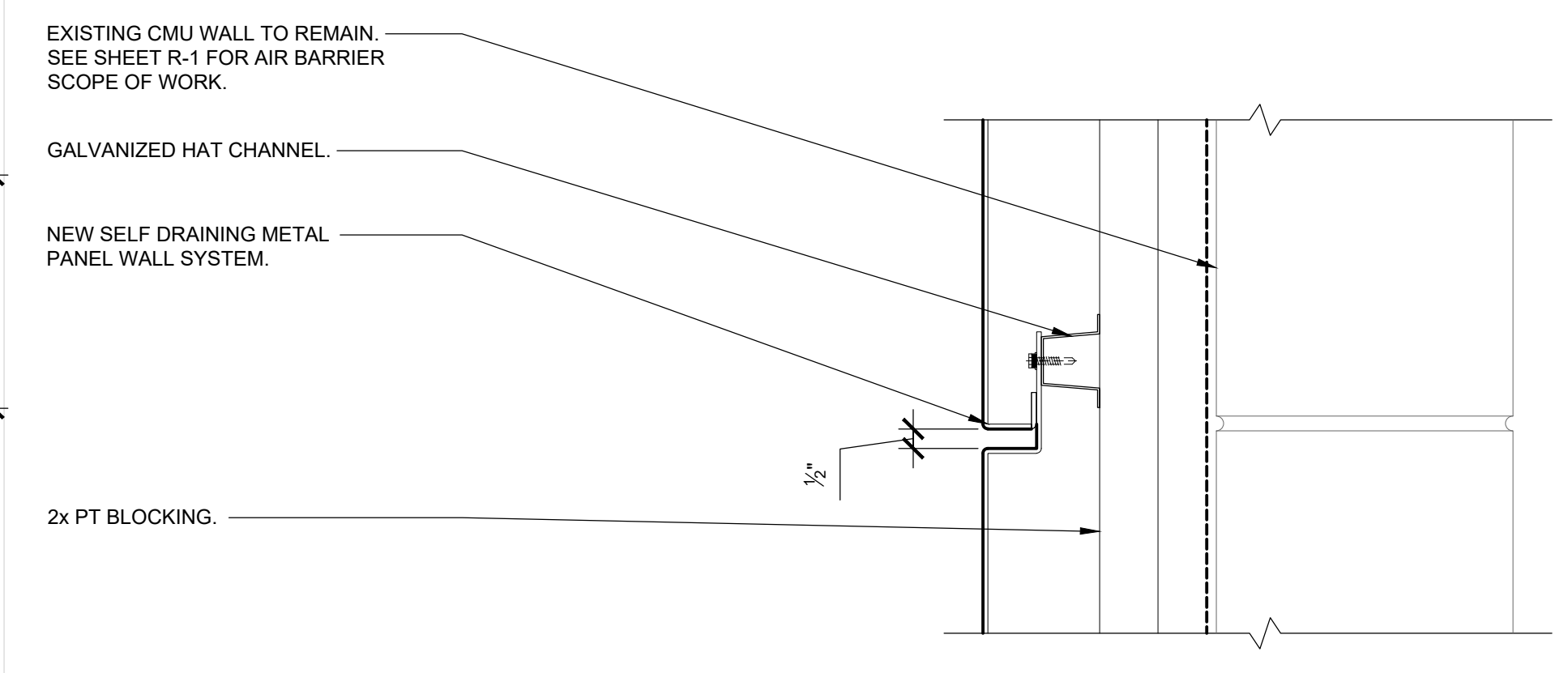
1 COPING
SCALE: 3" = 1'-0"



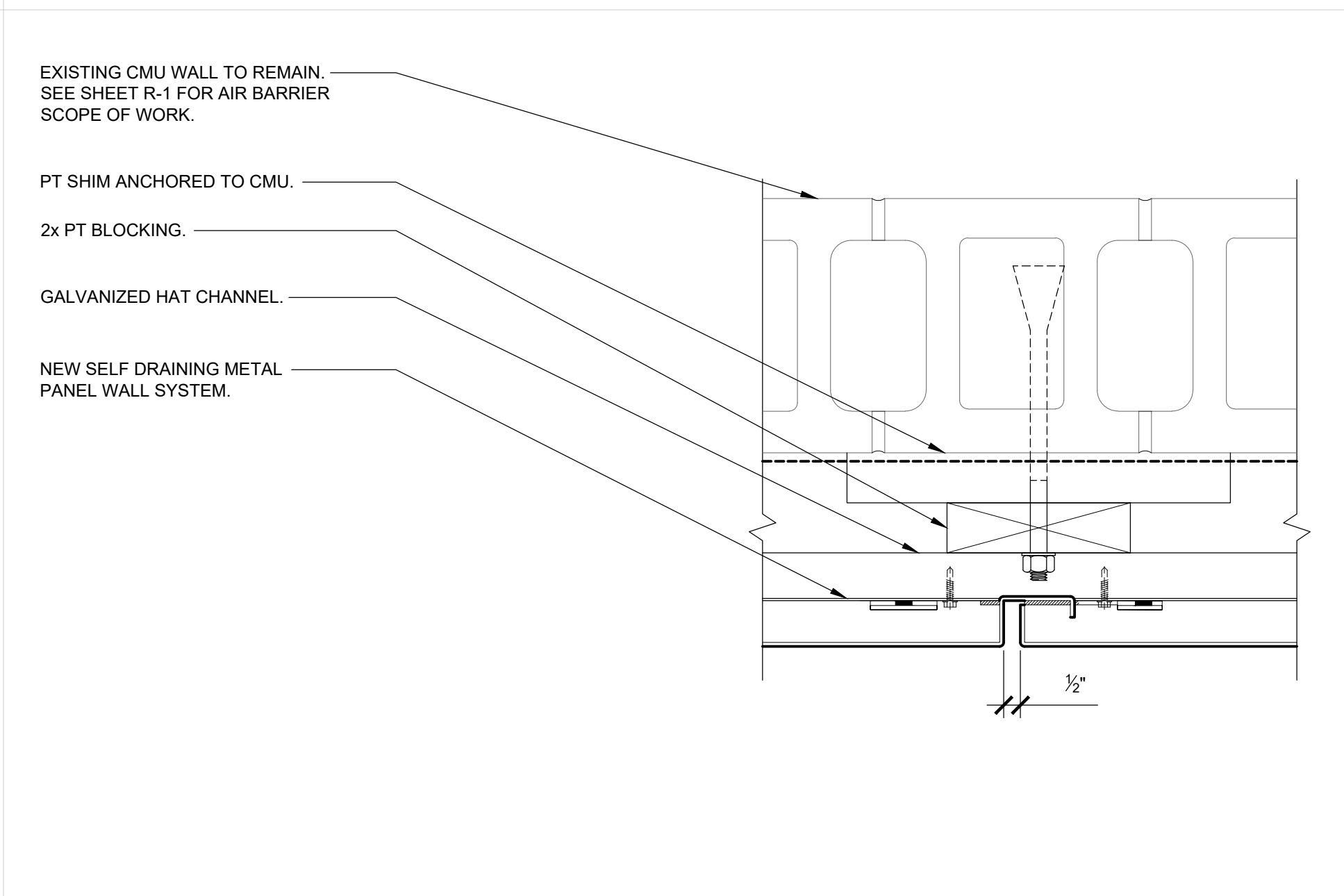
2 BASE OF WALL
SCALE: 3" = 1'-0"



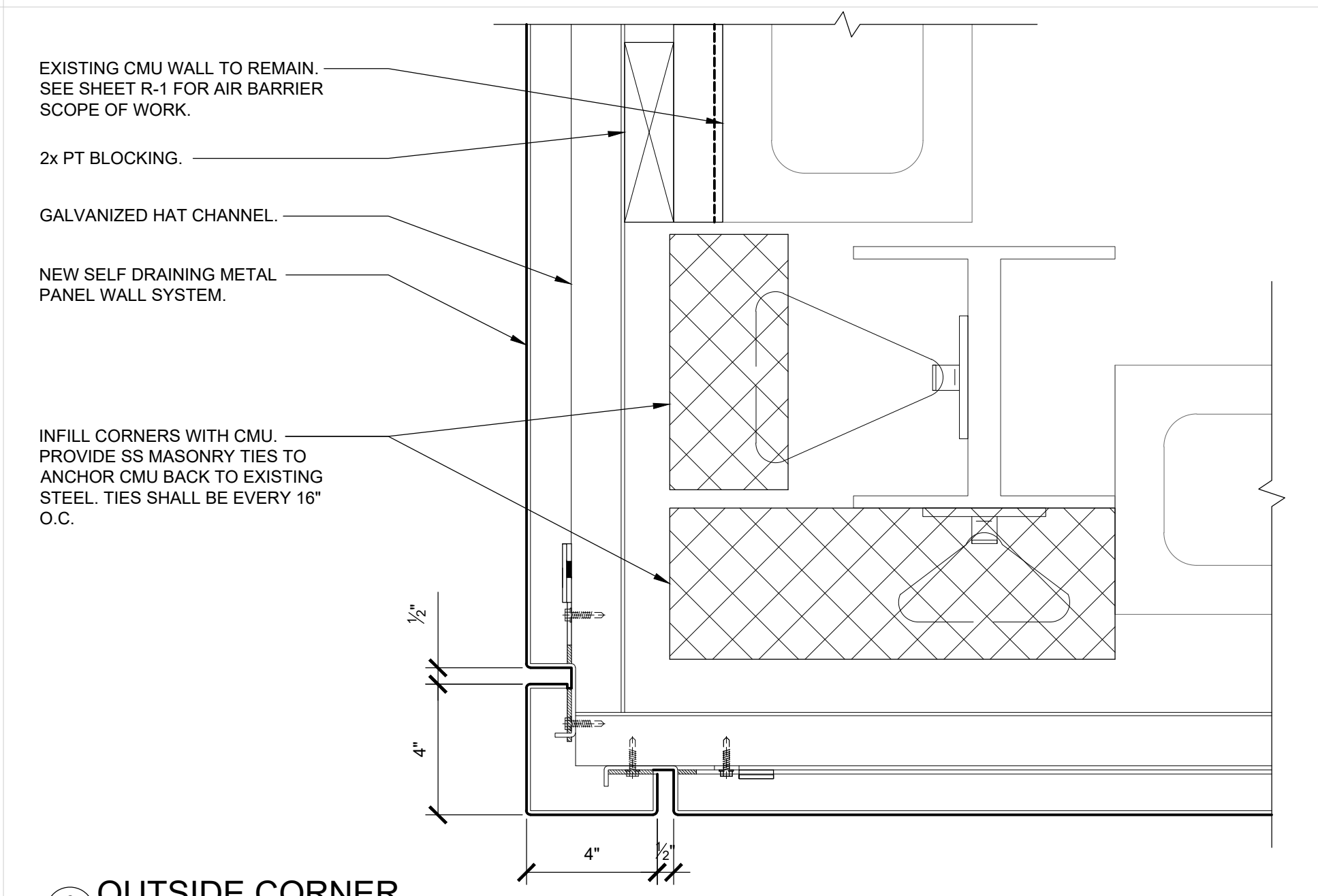
3 JOINT AT EXISTING WALL
SCALE: 3" = 1'-0"



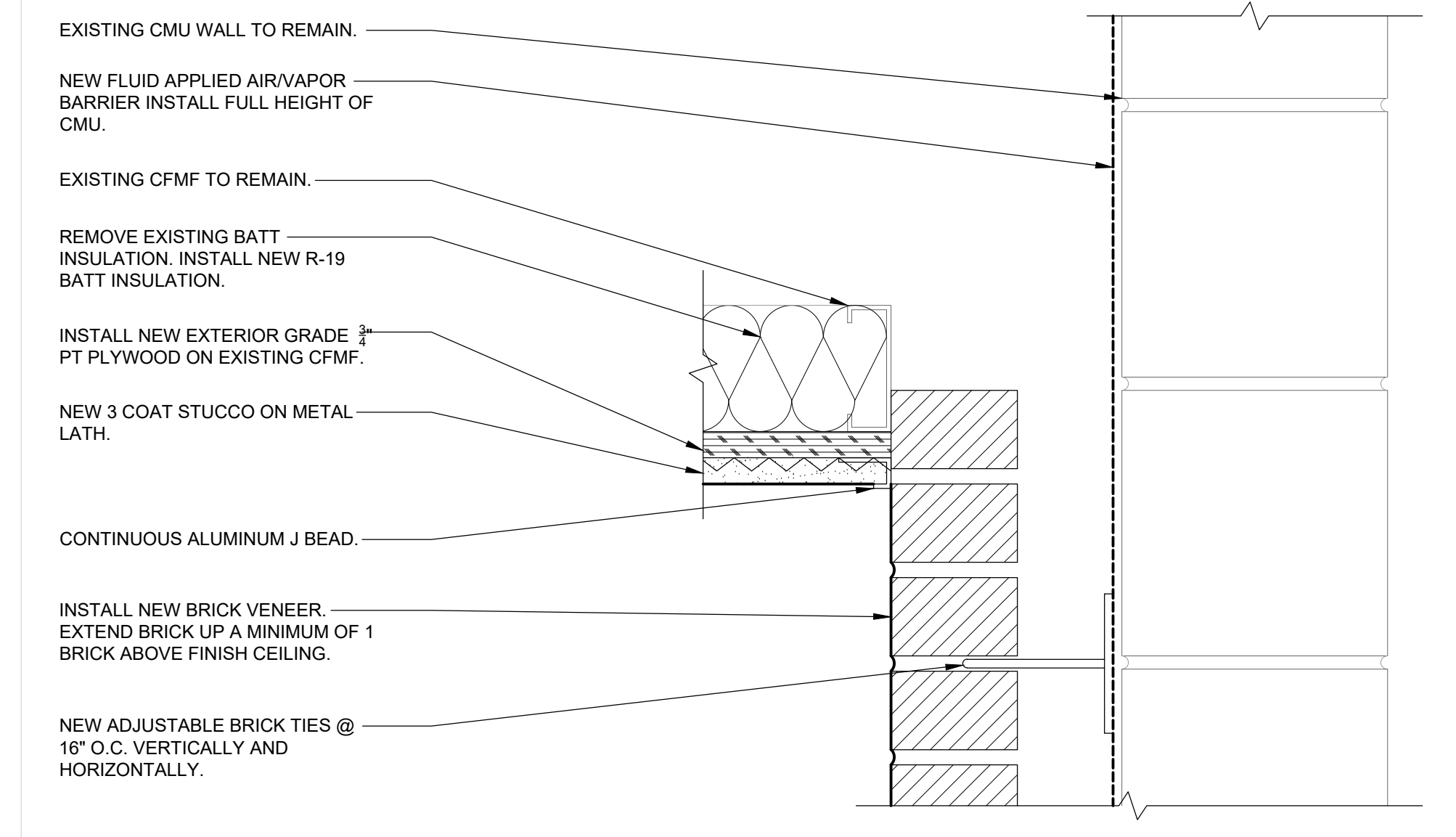
4 TYPICAL HORIZONTAL JOINT IN METAL PANEL
SCALE: 3" = 1'-0"



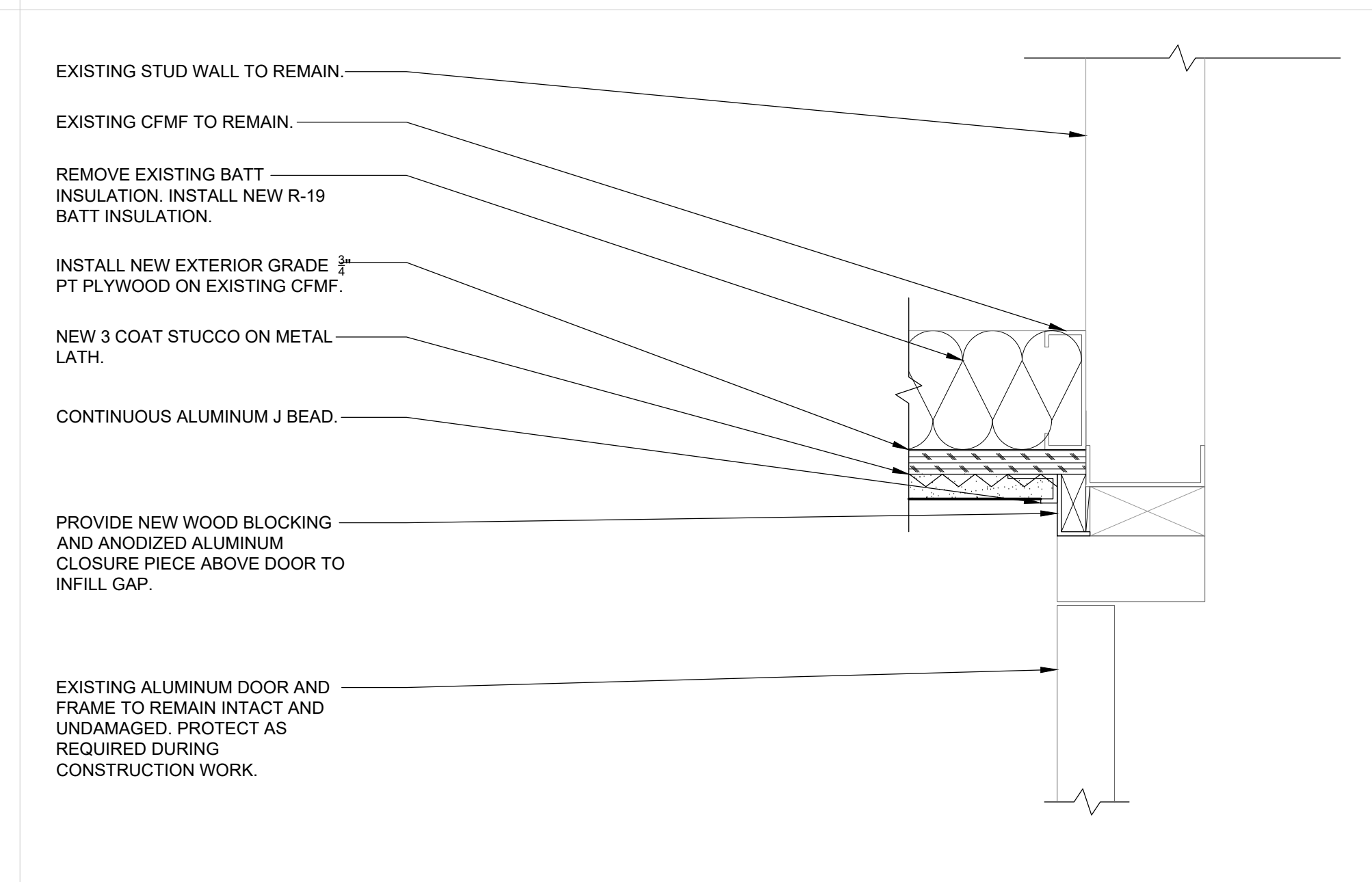
5 TYPICAL VERTICAL JOINT IN METAL PANEL
SCALE: 3" = 1'-0"



6 OUTSIDE CORNER
SCALE: 3" = 1'-0"



7 STUCCO CEILING AT RETURN WALL
SCALE: 3" = 1'-0"



8 STUCCO CEILING AT EXISTING DOORS
SCALE: 3" = 1'-0"

Rev. No.	Description of Revision
1	BID SET
	ADDENDUM #1
Date	1/7/20
1/23/2020	

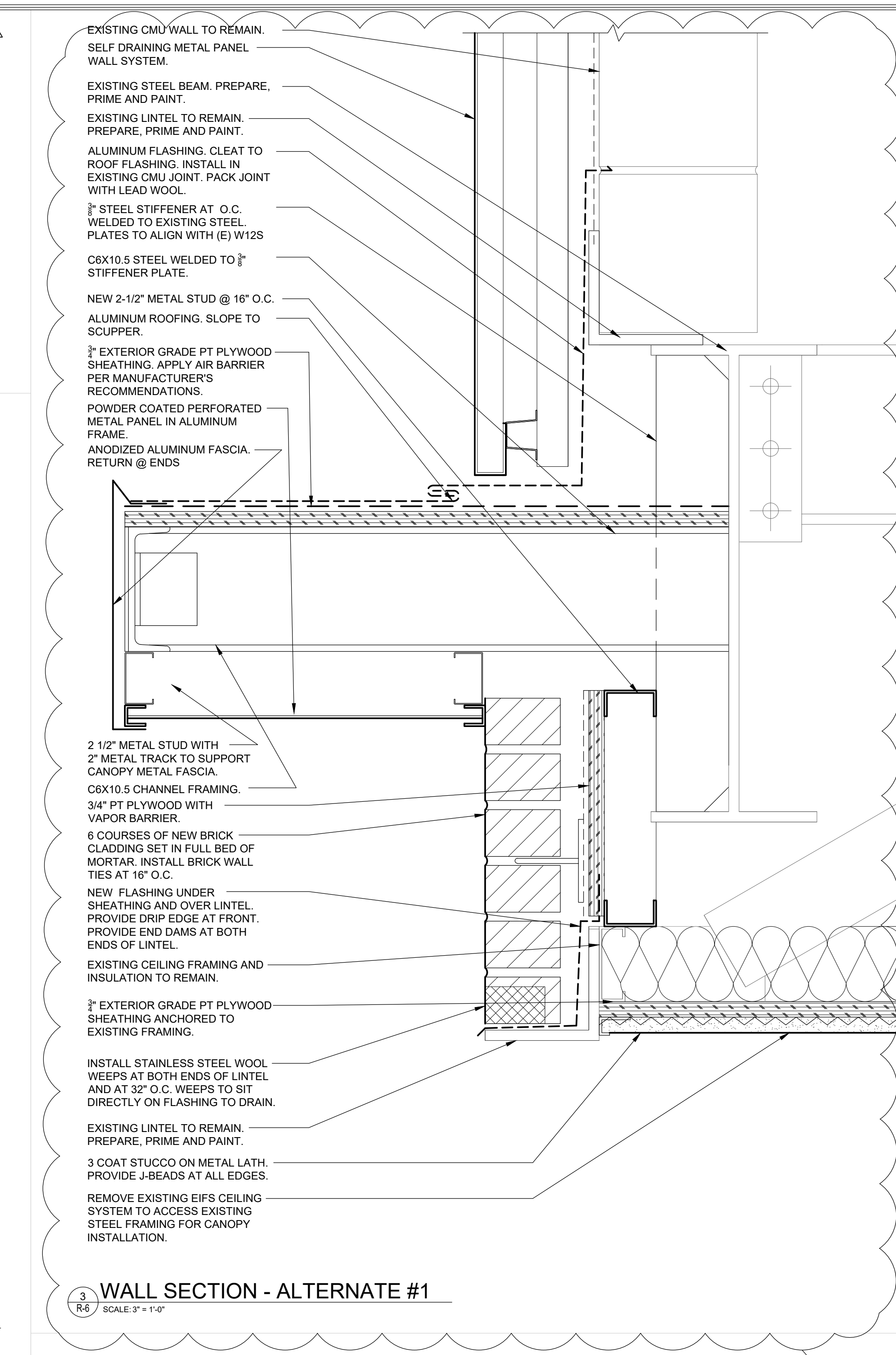
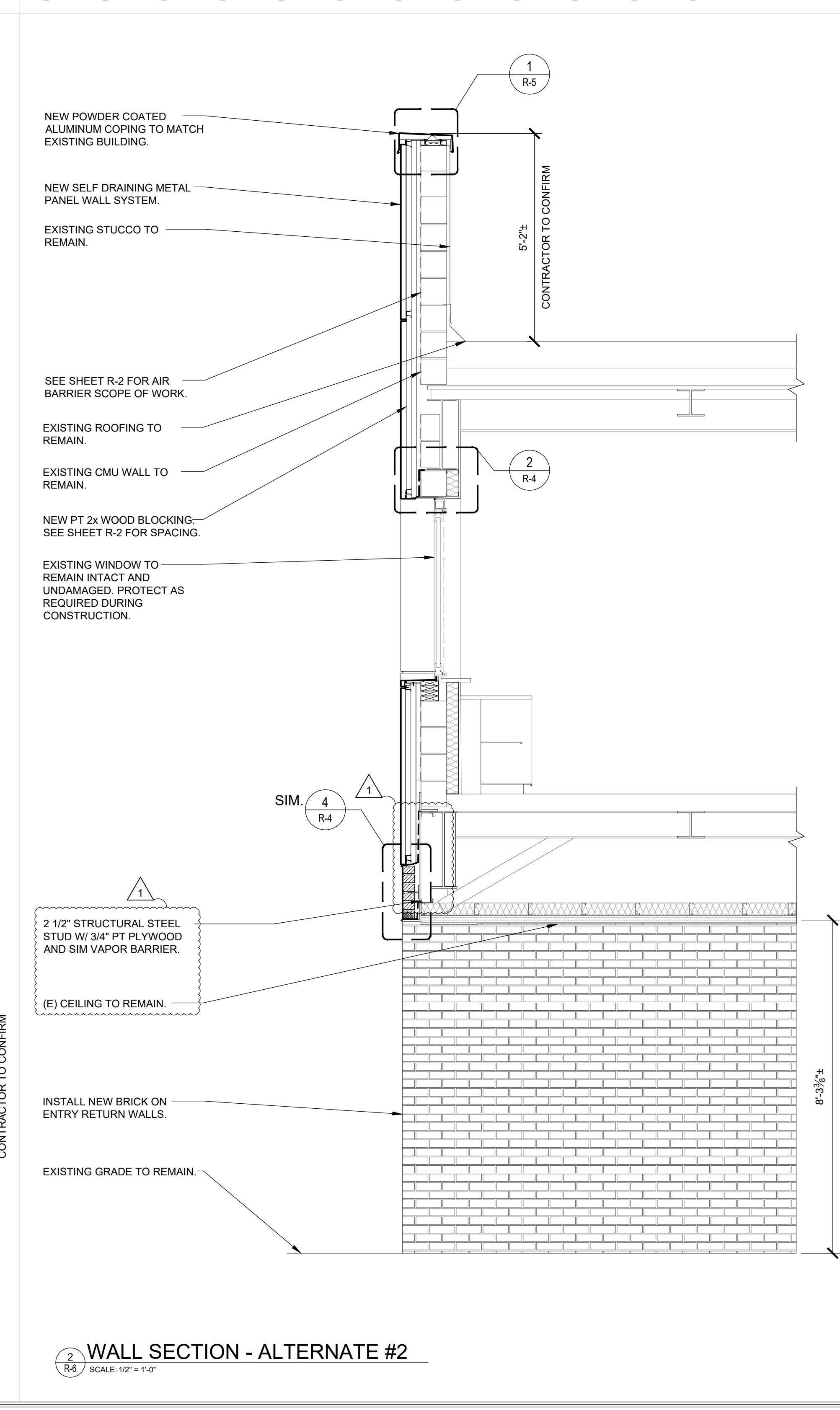
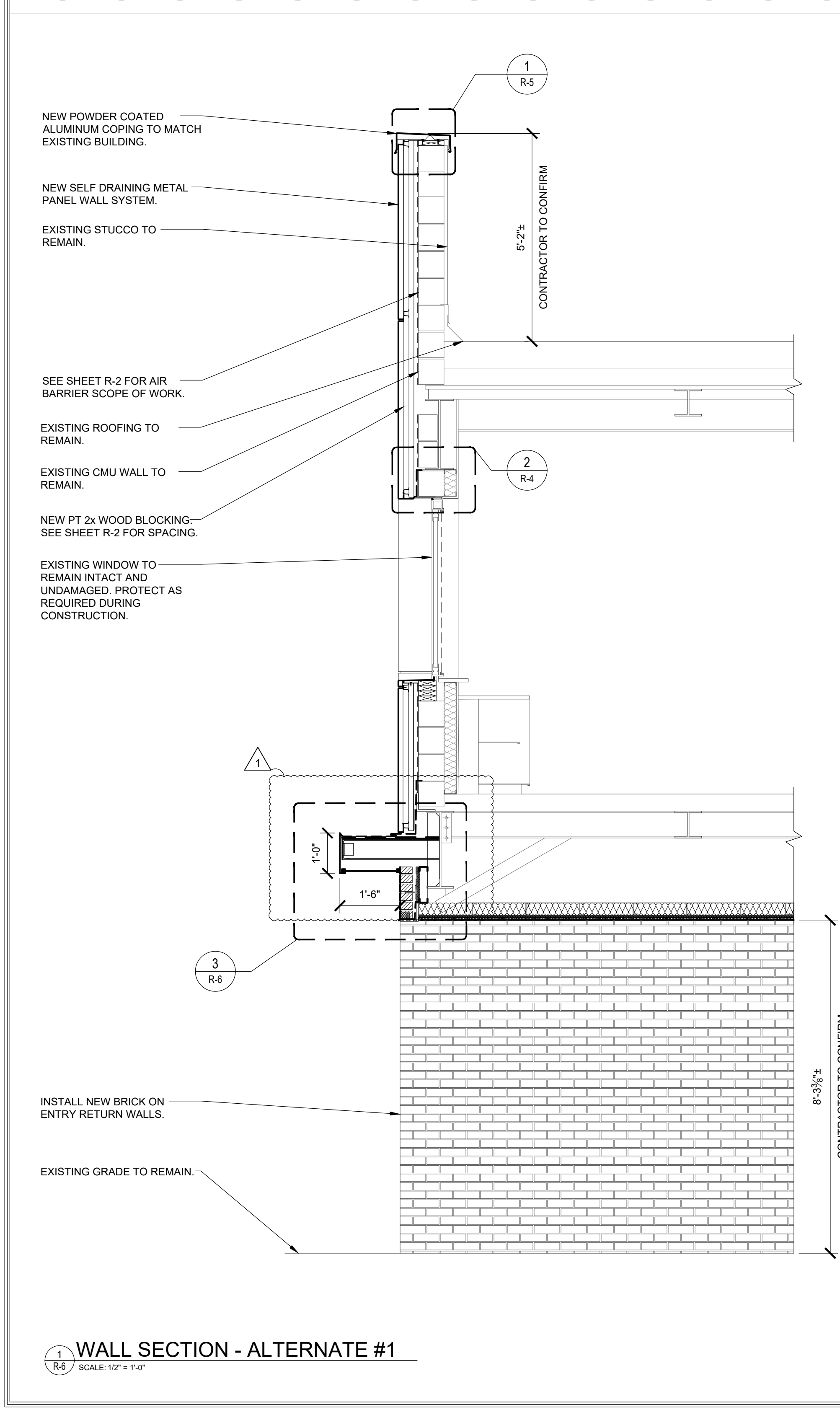
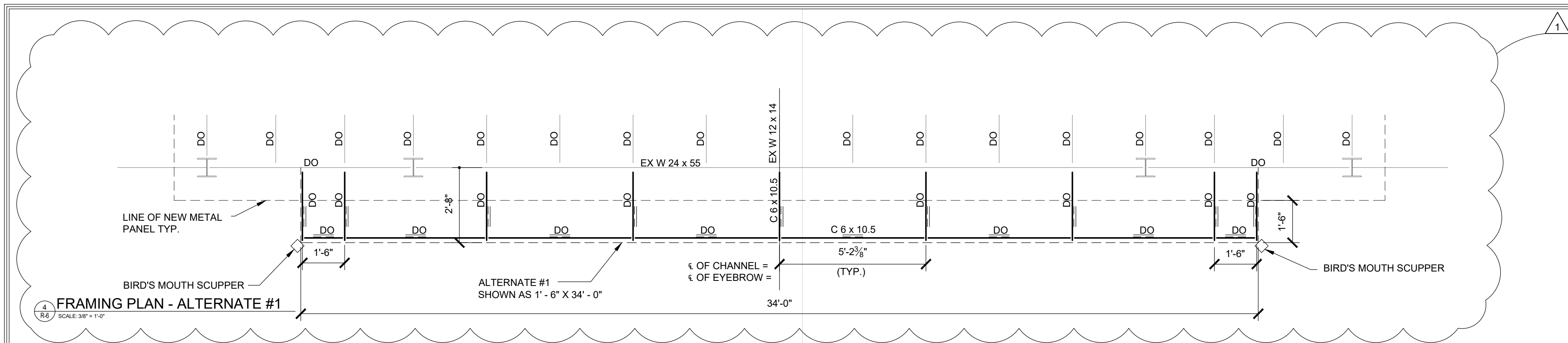
METHACTON SCHOOL DISTRICT
METHACTON HIGH SCHOOL
1005 KRIEBEL MILL ROAD, EAGLEVILLE, PA
2020 HIGH SCHOOL FRONT ENTRY REPLACEMENT PROJECT (20.7.8)

335 W. STATE STREET
FIRST FLOOR
MEDIA, PA 19063
Phone 484-442-8137
Fax 484-442-8139

Shepherd Restoration Engineers, Inc.
Caring for the Built Environment

Project No. 2019.020
Date 1/7/2020
Designed SJV
Drawn AJG/WJG
Checked TPS

R-5
NO 6 of 7



ALTERNATES:

ALTERNATE #1:
CANOPY CONSTRUCTION TO BE REMOVED FROM SCOPE OF WORK AND 'EYEBROW' ADDED. SEE DETAILS 1, 3 & 4/R-6. LIGHTING BY OTHERS. COORDINATE WORK WITH 2020 HS MEP PROJECT.

ALTERNATE #2:
CANOPY SCOPE OF WORK TO BE REMOVED FROM PROJECT. CEILING SCOPE OF WORK TO BE REMOVED FROM PROJECT.

Project No. 2019.020	Date 1/7/2020	Designed SJV	Drawn AJG/WJG	Checked TPS
R-6 NO 7 of 8				

METHACTON SCHOOL DISTRICT
METHACTON HIGH SCHOOL
1005 KRIEBEL MILL ROAD, EAGLEVILLE, PA
2020 HIGH SCHOOL FRONT ENTRY REPLACEMENT PROJECT (20.7.8)
ALTERNATES

335 W. STATE STREET
FIRST FLOOR
MEDIA, PA 19063
Phone: 484-442-8137
Fax: 484-442-8139

Shepherd Restoration Engineers, Inc.
Caring for the Built Environment