

ADDENDUM NO. 2

JUNE 1,2022

PAGE 1

The contents of this Addendum alter and amend the drawings and specifications and take precedence over the related items therein. Bidders shall include the cost of all items in their Bids.

GENERAL INFORMATION

1. A reminder, the last day for submitting questions to the Architect is Thursday, June 2, 2022; questions are to be submitted no later than the end of the workday on this day. After this date no further questions will be reviewed or accepted. A final addendum, if required, will be issued on Monday, June 6, 2022.

SPECIFICATIONS

1. **Section 075323, ETHYLENE-PROPYLENE-DIENE-MONOMER (EPDM) ROOFING**, Page 075323-5, Paragraph 2.2.A., **REVISE** as follows:

“2. Thickness: 60 mils, nominal.”

2. **Section 088000, GLAZING**: Page 088000-4, Paragraph 2.5.A, **ADD** the following:

“3. Thickness:1/4 -inch”

3. **Section 101423.16, ROOM-IDENTIFICATION PANEL SIGNAGE, 3 pages, is attached to and made a part of this Addendum. All signage by G.C.**

4. **Section 105113, METAL LOCKERS**, Page 105113-2, Paragraph 2.3.A, **ADD** the following manufacture:

“9. Scranton Products – Tufftec Lockers”

5. **Section 105113, METAL LOCKERS**, Page 105113-4, Paragraph 2.4.A, **ADD** the following manufacture:

“7. Scranton Products – Tufftec Bench”

DRAWINGS

1. **Sheet S-200, REVISE** Note 4 as follows: 1 ½” – 20ga. Galv. Roof Deck.
2. **Sheet A-302, drawings 1, 2, 3, & 4: ADD** keynote 06.10.14: ½” PRESERVATIVE TREATED PLYWOOD SHEATHING and keynote 9.22.07 at all metal wall panel locations.
3. **Sheet A-303, drawing 1: ADD** keynote 06.10.14: ½” PRESERVATIVE TREATED PLYWOOD SHEATHING and keynote 9.22.07 at all metal wall panel locations.
4. **Sheet A-304, drawing 2: ADD** keynote 06.10.14: ½” PRESERVATIVE TREATED PLYWOOD SHEATHING and keynote 9.22.07 at all metal wall panel locations.
5. **Sheet A-305, drawing 2: ADD** keynote 06.10.14: ½” PRESERVATIVE TREATED PLYWOOD SHEATHING and keynote 9.22.07 at all metal wall panel locations. **MODIFY** parapet coping detail reference to 4/A-505.

ADDENDUM NO. 2

June 1,2022

PAGE 2

6. **Sheet A-306, drawing3: ADD** keynote 06.10.14: ½” PRESERVATIVE TREATED PLYWOOD SHEATHING and keynote 9.22.07 at all metal wall panel locations.
7. **Sheet AS-102 Drawing 4 and Site Plan Legend: MODIFY** Note to read as follows: Sanitary line from existing manhole to sewer ejector, by **G.C.**
8. **Sheet A-502, Drawing 8, Hoistway Detail: MODIFY** Viewpoint to read key notes. Refer to SD-002 which is attached to and made a part of this Addendum.
9. **Sheet A-503, drawings 2, 3, 5, & 6: ADD** keynote 06.10.14: ½” PRESERVATIVE TREATED PLYWOOD SHEATHING and keynote 9.22.07 at all metal wall panel locations.
10. **Sheet A-504, drawings 2 & 4: ADD** keynote 06.10.14: ½” PRESERVATIVE TREATED PLYWOOD SHEATHING and keynote 9.22.07 at all metal wall panel locations.
11. **Sheet A-505, drawings 5, 6, 8, & 9: ADD** keynote 06.10.14: ½” PRESERVATIVE TREATED PLYWOOD SHEATHING and keynote 9.22.07 at all metal wall panel locations.
12. **Sheet A-601: MODIFY** storefront SF-1 glazing to insulated glass. Refer to SD-003, which is attached to and made a part of this Addendum.
13. **All Sheets: MODIFY** Keynote 5.12.12 to read as follows: STEEL DUCTWORK SUPPORT BY H.C. COORDINATE w/ STRUCTURAL DRAWINGS.
14. **All Sheets: MODIFY** Keynote 3.30.12 to read as follows: CONCRETE DUCT SUPPORT FOUNDATION, BY H.C. COORDINATE w/ STRUCTURAL DRAWINGS. COORDINATE LOCATIONS w/ MECHANICAL DRAWINGS.
15. **All sheets: MODIFY** keynote: 9.22.04: 3-5/8” x 20ga. METAL STUDS @ 16” o.c.
16. **All Sheets: MODIFY** keynote 4.05.50 to read as follows: ½” HILTI ANCHOR. COORDINATE w/ STRUCTURAL DRAWINGS.

END.
MUHLENBERG GREENE ARCHITECTS, LTD.

JAS/djc

Attachments

- Section 101423.16, ROOM IDENTIFICATION SIGNAGE PANELS, 3 pages
- SD-002, HOISTWAY DETAIL, dated 5/31/2022
- SD-003. STOREFRONT SF-1, dated 5/31/2022
- RFI Responses:
 - Balton; RFI 01 thru 027
 - Stuebner: RFI 01

SECTION 101423.16 - ROOM-IDENTIFICATION PANEL SIGNAGE

PART 1 - GENERAL

1.1 RELATED DOCUMENTS

- A. Drawings and general provisions of the Contract, including General and Supplementary Conditions and Division 01 Specification Sections, apply to this Section.

1.2 SUMMARY

- A. Section includes identification signs that are directly attached to the building.

1.3 ACTION SUBMITTALS

- A. Product Data: For each type of product.
- B. Shop Drawings: For room-identification signs.
 - 1. Include fabrication and installation details and attachments to other work.
 - 2. Show sign mounting heights, locations of supplementary supports to be provided by other installers, and accessories.
 - 3. Show message list, typestyles, graphic elements, and layout for each sign at least half size.
- C. Samples: For each exposed product and for each color and texture specified.

1.4 INFORMATIONAL SUBMITTALS

- A. Sample warranty.

1.5 CLOSEOUT SUBMITTALS

- A. Maintenance data.

1.6 WARRANTY

- A. Special Warranty: Manufacturer agrees to repair or replace components of signs that fail in materials or workmanship within specified warranty period.
 - 1. Warranty Period: Five years from date of Substantial Completion.

PART 2 - PRODUCTS

2.1 ROOM-IDENTIFICATION SIGNS

- A. Room/Door-Identification Sign: Sign with smooth, uniform surfaces; with message and characters having uniform faces, sharp corners, and precisely formed lines and profiles; and as follows:
1. Manufacturers: Subject to compliance with requirements, available manufacturers offering products that may be incorporated into the Work include, but are not limited to the following:
 - a. APCO Graphics, Inc.
 - b. ASI Sign Systems, Inc.
 - c. Mohawk Sign Systems.
 - d. Signature Signs, Inc.
 - e. Vomar Products, Inc.
 2. Laminated-Sheet Sign: Photopolymer face sheet with raised graphics laminated to acrylic backing sheet to produce composite sheet. Except where indicated for metal backing.
 - a. Composite-Sheet Thickness: Manufacturer's standard for size of sign.
 - b. Surface-Applied Graphics: Applied vinyl film.
 - c. Color(s): As selected by Architect from manufacturer's full range.
 3. Sign-Panel Perimeter: Finish edges smooth.
 - a. Edge Condition: Beveled.
 - b. Corner Condition in Elevation: Rounded to $\frac{1}{2}$ " +/- radius.
 4. Mounting: Manufacturer's standard method for substrates indicated to provide vandal resistant mounting.

2.2 SIGN MATERIALS

- A. Acrylic Sheet: ASTM D 4802, category as standard with manufacturer for each sign, Type UVF (UV filtering).
- B. Vinyl Film: UV-resistant vinyl film with pressure-sensitive, permanent adhesive; die cut to form characters or images as indicated on Drawings and suitable for exterior applications.

2.3 ACCESSORIES

- A. Fasteners and Anchors: Manufacturer's standard as required for secure anchorage of signs, noncorrosive and compatible with each material joined, and complying with the following:
1. Use concealed fasteners and anchors unless indicated to be exposed.
 2. For exterior exposure, furnish stainless-steel devices unless otherwise indicated.
- B. Adhesive: As recommended by sign manufacturer.

2.4 FABRICATION

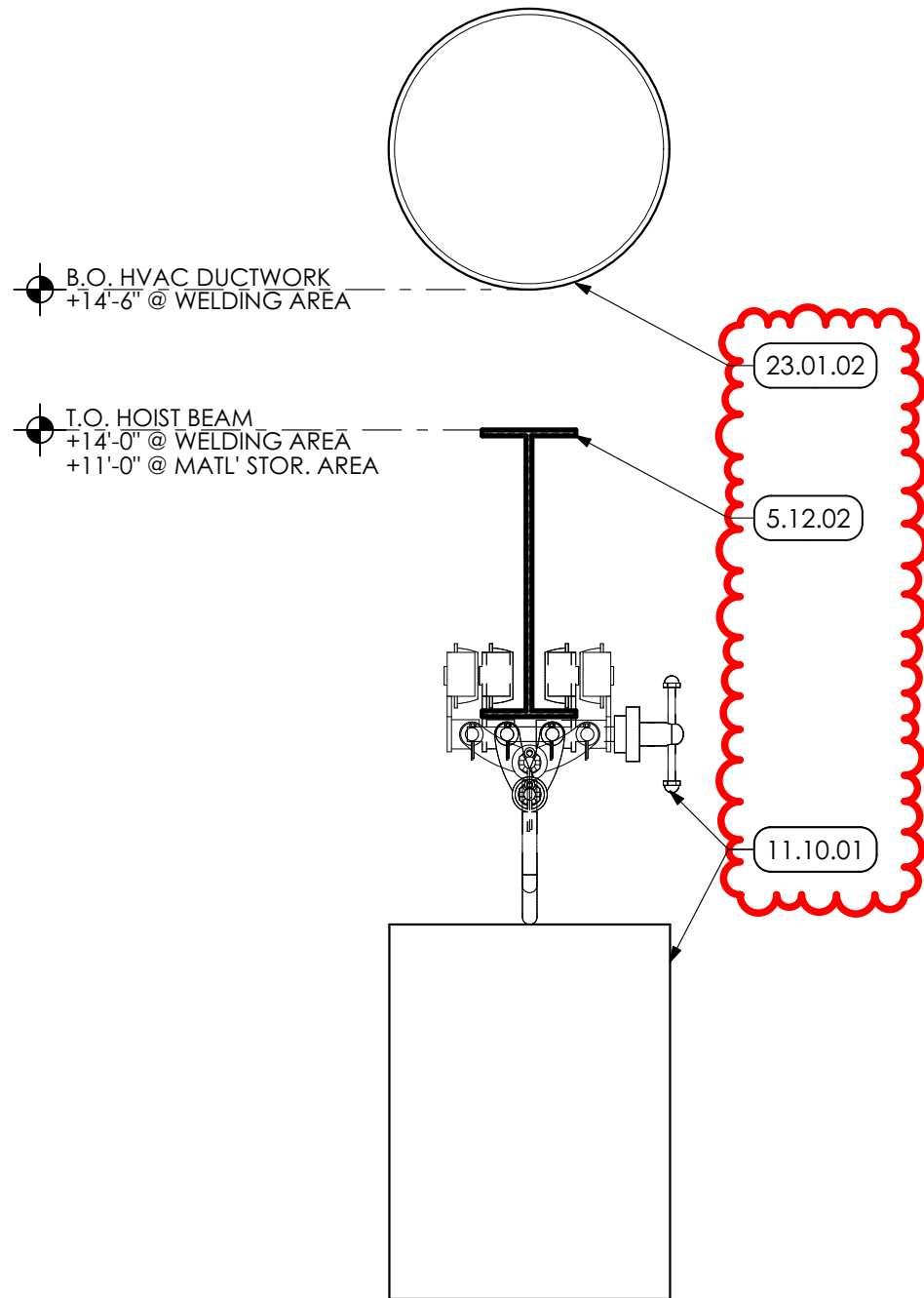
- A. General: Provide manufacturer's standard sign assemblies according to requirements indicated.
1. Mill joints to a tight, hairline fit. Form assemblies and joints exposed to weather to resist water penetration and retention.
 2. Conceal connections if possible; otherwise, locate connections where they are inconspicuous.
 3. Provide rabbets, lugs, and tabs necessary to assemble components and to attach to existing work. Drill and tap for required fasteners. Use concealed fasteners where possible; use exposed fasteners that match sign finish.

PART 3 - EXECUTION

3.1 INSTALLATION

- A. General: Install signs using mounting methods indicated and according to manufacturer's written instructions.
1. Install signs level, plumb, true to line, and at locations and heights indicated, with sign surfaces free of distortion and other defects in appearance.
 2. Install signs so they do not protrude or obstruct according to the accessibility standard.
 3. Before installation, verify that sign surfaces are clean and free of materials or debris that would impair installation.
- B. Mounting Methods:
1. Concealed Studs: Using a template, drill holes in substrate aligning with studs on back of sign. Remove loose debris from hole and substrate surface.
 - a. Masonry Substrates: Fill holes with adhesive. Leave recess space in hole for displaced adhesive. Place sign in position and push until flush to surface, embedding studs in holes. Temporarily support sign in position until adhesive fully sets.
 - b. Thin or Hollow Surfaces: Place sign in position and flush to surface, install washers and nuts on studs projecting through opposite side of surface, and tighten.
 2. Adhesive: Clean bond-breaking materials from substrate surface and remove loose debris. Apply linear beads or spots of adhesive symmetrically to back of sign and of suitable quantity to support weight of sign after cure without slippage. Keep adhesive away from edges to prevent adhesive extrusion as sign is applied and to prevent visibility of cured adhesive at sign edges. Place sign in position and push to engage adhesive. Temporarily support sign in position until adhesive fully sets.
 3. Where signs are scheduled to be mounted on glass, provide mounting and backing material to maintain transparency.

END OF SECTION 101423.16



KEYED NOTES

- 05 METALS**
- 5.12 STRUCTURAL STEEL FRAMING | SPEC 051200/099600**
- 5.12.02 STEEL BEAM. COORDINATE WITH STRUCTURAL DRAWINGS.

- 11 EQUIPMENT**
- 11.10 EQUIPMENT**
- 11.10.01 STEEL ELECTRIC CHAIN HOIST WITH QUICK INSTALL MANUAL TROLLEY, 2,000 POUND CAPACITY. (BASIS OF DESIGN: VESTIL MODEL ECH-20-1 PH / VESTIL MODEL QIT-2).

- 23 HVAC | BY H.C.**
- WORK DESCRIBED IN THESE KEYNOTES IS THE RESPONSIBILITY OF THE H.C. UNLESS NOTED OTHERWISE. COORDINATE WITH MECHANICAL DRAWINGS.
- 23.01.02 SCHEDULED DUCTWORK. COORDINATE WITH HVAC DRAWINGS.

FINISH FLOOR 0'-0"

8 HOISTWAY DETAIL

SCALE: 1 1/2" = 1'-0"

READING MUHLENBERG CAREER & TECHNOLOGY CENTER

PROGRAM UPGRADES

2615 WARREN ROAD READING, PA19604

PROJ. MGR.: JAMES A. SARRO, AIA	P.M. e-MAIL: JimS@MG-Architects.com
DRAWN BY: BB, DK	DATE: 5/31/2022
CLIENT PROJ #: -	CLIENT: RMCTC

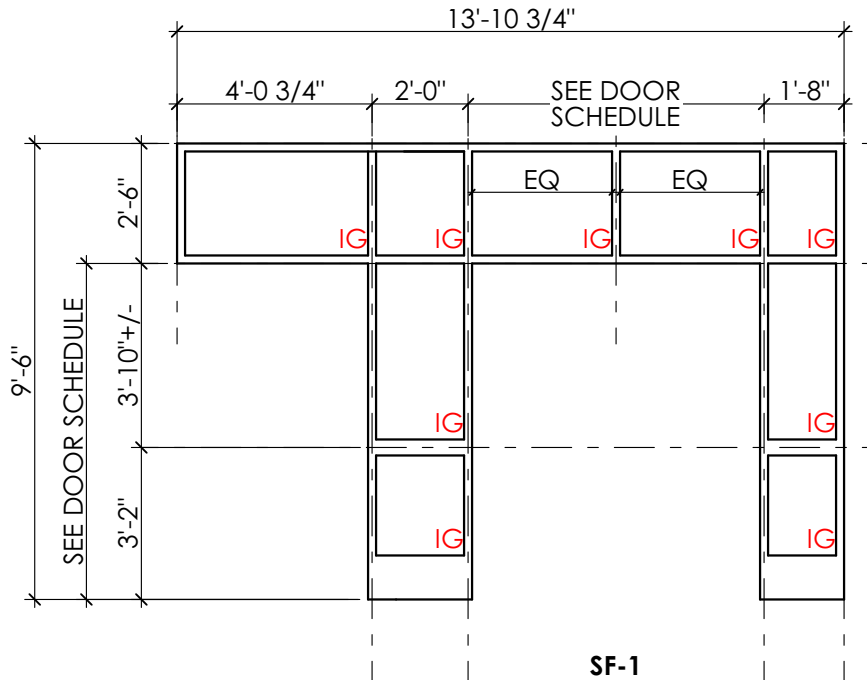
HOISTWAY DETAIL

PROJECT #: 4525A

SD-002

GLAZING LEGEND | SPEC. 088000

- IG INSULATING GLASS
- LG LAMINATED GLASS



4 STOREFRONT ELEVATIONS | SPEC. 084113
 SCALE: 1/4" = 1'-0"

READING MUHLENBERG CAREER & TECHNOLOGY CENTER

PROGRAM UPGRADES

2615 WARREN ROAD READING, PA19604

PROJ. MGR.: JAMES A. SARRO, AIA	P.M. e-MAIL: JimS@MG-Architects.com
DRAWN BY: BB, DK	DATE: 5/31/2022
CLIENT PROJ #: -	CLIENT: RMCTC

STOREFRONT SF-1

ESTABLISHED 1920

PROJECT #:
4525A

SD-003

From: Brad Blankenbiller
Sent: Wednesday, May 25, 2022 10:31 AM
To: Grant Straiton
Cc: Jim A. Sarro, AIA LEED AP+
Subject: RE: Muhlenberg Career & Tech Upgrades RFI

Good Morning Grant,
See below for response to questions 1 and 3:

1. S-303 Shows 20 GA. Metal Roof Deck. Note 6 on S-200 calls for 22 GA. Roof Deck. Please advise. **Metal roof deck to be 20 ga.**
3. Reference mezzanine door locations on 1/A-301 & 2/A-305. Please clarify door and wall layout/schedule for mezzanine. **See floor plans for layout and configuration of walls and doors.**

Thanks,

Bradley S. Blankenbiller
Design Technician
MUHLENBERG GREENE ARCHITECTS, Ltd.

T 610 . 376 . 4927
W MG-Architects.com
955 BERKSHIRE BLVD . STE 101 . WYOMISSING



From: Grant Straiton <Grant@baltonconstruction.com>
Sent: Monday, May 23, 2022 2:48 PM
To: Brad Blankenbiller <BradB@MG-Architects.com>
Cc: Jim A. Sarro, AIA LEED AP+ <JimS@MG-Architects.com>
Subject: RE: Muhlenberg Career & Tech Upgrades RFI

Hey Brad,

Thanks for getting back to me. Please disregard question 2, it was sent in error. Sorry for the mix up.

Thank you!
Grant Straiton
Estimator / Assistant Project Manager



Balton Construction, Inc
25 East Main Street, PO Box 600, Richland, PA 17087
Cell: 951-317-8261 **Fax:** 888-753-6419
grant@baltonconstruction.com www.BaltonConstruction.com

Send All Invoices to:
AccountsPayable@BaltonConstruction.com

From: Brad Blankenbiller <BradB@MG-Architects.com>
Sent: Monday, May 23, 2022 2:36 PM
To: Grant Straiton <Grant@baltonconstruction.com>
Cc: Jim A. Sarro, AIA LEED AP+ <JimS@MG-Architects.com>
Subject: Muhlenberg Career & Tech Upgrades RFI

Hi Grant,
Could you please clarify question 2 and specify what you would like answered?

Thank you,

Bradley S. Blankenbiller
Design Technician
MUHLENBERG GREENE ARCHITECTS, Ltd.

T 610 . 376 . 4927
W MG-Architects.com
955 BERKSHIRE BLVD . STE 101 . WYOMISSING



From: Grant Straiton <Grant@baltonconstruction.com>
Sent: Monday, May 23, 2022 9:59 AM
To: Jim A. Sarro, AIA LEED AP+ <JimS@MG-Architects.com>
Subject: Muhlenberg Career & Tech Upgrades RFI

Good morning Jim,

I hope this email finds you well. I have a few questions regarding this job:

1. S-303 Shows 20 GA. Metal Roof Deck. Note 6 on S-200 calls for 22 GA. Roof Deck. Please advise.
2. Exterior Wall block on A's doesn't match Architectural.
3. Reference mezzanine door locations on 1/A-301 & 2/A-305. Please clarify door and wall layout/schedule for mezzanine.

Thank you!
Grant Straiton
Estimator / Assistant Project Manager



Balton Construction, Inc
25 East Main Street, PO Box 600, Richland, PA 17087
Cell: 951-317-8261 **Fax:** 888-753-6419
grant@baltonconstruction.com www.BaltonConstruction.com

Send All Invoices to:
AccountsPayable@BaltonConstruction.com

Jim A. Sarro, AIA LEED AP+

From: Jim A. Sarro, AIA LEED AP+
Sent: Tuesday, May 24, 2022 8:36 AM
To: Steve Warnek
Cc: Brad Blankenbiller
Subject: RE: RMCTC Welding

AS-102 has been coordinated with the MEP drawings. Please utilize this plan for areas around the proposed welding building and for utility trenching details. All other details are per the civil drawings. It is ultimately the GC's responsibility to coordinate with these plans during construction.

James A. Sarro, AIA, LEED AP BD+C
Principal

[MUHLENBERG GREENE ARCHITECTS, Ltd.](#)

T 610 . 376 . 4927

C 610 . 310 . 6150

W [MG-Architects.com](#)

955 BERKSHIRE BLVD . STE 101 . WYOMISSING . PA . 19610-1278



From: Steve Warnek <Steve@baltonconstruction.com>
Sent: Monday, May 23, 2022 3:45 PM
To: Jim A. Sarro, AIA LEED AP+ <JimS@MG-Architects.com>
Cc: Brad Blankenbiller <BradB@MG-Architects.com>
Subject: RE: RMCTC Welding

Hi Jim,
The Utilities/trenching/restoration do not match.
Also, looks like a pad outside E-1.

Thank you,
Steve Warnek
Project Manager/Estimator
484-336-4666

From: Jim A. Sarro, AIA LEED AP+ <JimS@MG-Architects.com>
Sent: Monday, May 23, 2022 2:54 PM
To: Steve Warnek <Steve@baltonconstruction.com>
Cc: Brad Blankenbiller <BradB@MG-Architects.com>
Subject: RE: RMCTC Welding

Steve,

Can you clarify what does not match so we can comment?

Thanks

James A. Sarro, AIA, LEED AP BD+C
Principal

[MUHLENBERG GREENE ARCHITECTS, Ltd.](#)

T 610 . 376 . 4927

C 610 . 310 . 6150

W [MG-Architects.com](#)

955 BERKSHIRE BLVD . STE 101 . WYOMISSING . PA . 19610-1278



From: Steve Warnek <Steve@baltonconstruction.com>
Sent: Monday, May 23, 2022 2:48 PM
To: Jim A. Sarro, AIA LEED AP+ <JimS@MG-Architects.com>
Subject: RMCTC Welding

Hi Jim,

C4.1 does not match with AS-102. Please clarify which is correct.

Thank you,

Steve Warnek
Project Manager/Estimator



Balton Construction, Inc
25 East Main Street
PO Box 600
Richland, PA 17087

Phone: 484-336-4666
Fax: 888-753-6419

Email: steve@baltonconstruction.com
Website: <https://baltonconstruction.com/>

Jim A. Sarro, AIA LEED AP+

From: Brad Blankenbiller
Sent: Tuesday, May 24, 2022 8:30 AM
To: Steve Warnek; Jim A. Sarro, AIA LEED AP+
Subject: RE: RMCTC Welding

Good Morning Steve,
The spec. will be updated to read 12" dia. x 36" ht. as shown on the drawing.
Thank you,

Bradley S. Blankenbiller
Design Technician
MUHLENBERG GREENE ARCHITECTS, Ltd.

T 610 . 376 . 4927
W MG-Architects.com
955 BERKSHIRE BLVD . STE 101 . WYOMISSING . PA . 1

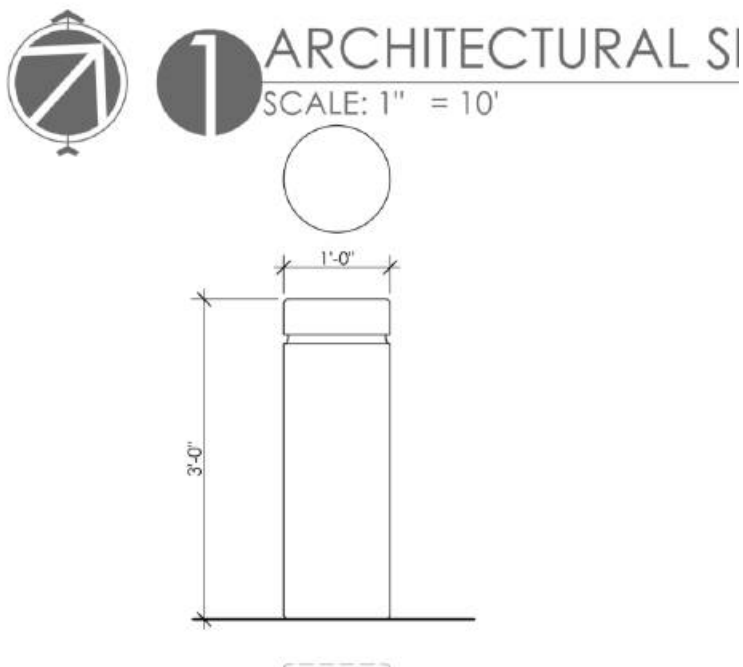


From: Steve Warnek <Steve@baltonconstruction.com>
Sent: Monday, May 23, 2022 4:56 PM
To: Jim A. Sarro, AIA LEED AP+ <JimS@MG-Architects.com>
Cc: Brad Blankenbiller <BradB@MG-Architects.com>
Subject: RE: RMCTC Welding

Hi Jim,
The bollard spec doesn't match the drawings- please clarify what is required.

B. Bollard Construction:

1. Type 'A' Bollard; 12-inch Diameter, min. by 30-inch height: See dr: selected product.



Thank you,
Steve Warnek
Project Manager/Estimator
484-336-4666

From: Jim A. Sarro, AIA LEED AP+ <JimS@MG-Architects.com>
Sent: Monday, May 23, 2022 2:54 PM
To: Steve Warnek <Steve@baltonconstruction.com>
Cc: Brad Blankenbiller <BradB@MG-Architects.com>
Subject: RE: RMCTC Welding

Steve,

Can you clarify what does not match so we can comment?

Thanks

James A. Sarro, AIA, LEED AP BD+C
Principal

[MUHLENBERG GREENE ARCHITECTS, Ltd.](http://www.muhlenberggreene.com)

T 610 . 376 . 4927

C 610 . 310 . 6150

W [MG-Architects.com](http://www.MG-Architects.com)

955 BERKSHIRE BLVD . STE 101 . WYOMISSING . PA . 19610-1278



From: Steve Warnek <Steve@baltonconstruction.com>
Sent: Monday, May 23, 2022 2:48 PM
To: Jim A. Sarro, AIA LEED AP+ <JimS@MG-Architects.com>
Subject: RMCTC Welding

Hi Jim,

C4.1 does not match with AS-102. Please clarify which is correct.

Thank you,

Steve Warnek
Project Manager/Estimator



Balton Construction, Inc
25 East Main Street
PO Box 600
Richland, PA 17087

Phone: 484-336-4666
Fax: 888-753-6419

Email: steve@baltonconstruction.com

Website: <https://baltonconstruction.com/>

From: Brad Blankenbiller
Sent: Wednesday, May 25, 2022 10:39 AM
To: Steve Warnek; Jim A. Sarro, AIA LEED AP+
Subject: RE: RMCTC Welding

Good Morning Steve,
Sanitary line from the sewage ejector to the existing manhole is by the GC.

Bradley S. Blankenbiller
Design Technician
MUHLENBERG GREENE ARCHITECTS, Ltd.

T 610 . 376 . 4927
W MG-Architects.com
955 BERKSHIRE BLVD . STE 101 . WYOMISSING



From: Steve Warnek <Steve@baltonconstruction.com>
Sent: Tuesday, May 24, 2022 9:11 AM
To: Jim A. Sarro, AIA LEED AP+ <JimS@MG-Architects.com>
Cc: Brad Blankenbiller <BradB@MG-Architects.com>
Subject: RE: RMCTC Welding

On AS -102- Some notes say sanitary line by GC- legend says by PC. Please clarify who owns the pipe.

Thank you,
Steve Warnek
Project Manager/Estimator
484-336-4666

From: Jim A. Sarro, AIA LEED AP+ <JimS@MG-Architects.com>
Sent: Tuesday, May 24, 2022 8:36 AM
To: Steve Warnek <Steve@baltonconstruction.com>
Cc: Brad Blankenbiller <BradB@MG-Architects.com>
Subject: RE: RMCTC Welding

AS-102 has been coordinated with the MEP drawings. Please utilize this plan for areas around the proposed welding building and for utility trenching details. All other details are per the civil drawings. It is ultimately the GC's responsibility to coordinate with these plans during construction.

James A. Sarro, AIA, LEED AP BD+C
Principal
MUHLENBERG GREENE ARCHITECTS, Ltd.

T 610 . 376 . 4927
C 610 . 310 . 6150
W MG-Architects.com
955 BERKSHIRE BLVD . STE 101 . WYOMISSING . PA . 19610-



From: Steve Warnek <Steve@baltonconstruction.com>
Sent: Monday, May 23, 2022 3:45 PM
To: Jim A. Sarro, AIA LEED AP+ <JimS@MG-Architects.com>

Cc: Brad Blankenbiller <BradB@MG-Architects.com>
Subject: RE: RMCTC Welding

Hi Jim,
The Utilities/trenching/restoration do not match.
Also, looks like a pad outside E-1.

Thank you,
Steve Warnek
Project Manager/Estimator
484-336-4666

From: Jim A. Sarro, AIA LEED AP+ <JimS@MG-Architects.com>
Sent: Monday, May 23, 2022 2:54 PM
To: Steve Warnek <Steve@baltonconstruction.com>
Cc: Brad Blankenbiller <BradB@MG-Architects.com>
Subject: RE: RMCTC Welding

Steve,

Can you clarify what does not match so we can comment?

Thanks

James A. Sarro, AIA, LEED AP BD+C
Principal

[MUHLENBERG GREENE ARCHITECTS, Ltd.](http://www.muhlenberggreene.com)

T 610 . 376 . 4927

C 610 . 310 . 6150

W [MG-Architects.com](http://www.MG-Architects.com)

955 BERKSHIRE BLVD . STE 101 . WYOMISSING . PA . 19610-



From: Steve Warnek <Steve@baltonconstruction.com>
Sent: Monday, May 23, 2022 2:48 PM
To: Jim A. Sarro, AIA LEED AP+ <JimS@MG-Architects.com>
Subject: RMCTC Welding

Hi Jim,

C4.1 does not match with AS-102. Please clarify which is correct.

Thank you,

Steve Warnek
Project Manager/Estimator



Balton Construction, Inc
25 East Main Street
PO Box 600
Richland, PA 17087

Phone: 484-336-4666
Fax: 888-753-6419

Email: steve@baltonconstruction.com
Website: <https://baltonconstruction.com/>

From: Brad Blankenbiller
Sent: Wednesday, May 25, 2022 10:47 AM
To: Steve Warnek; Jim A. Sarro, AIA LEED AP+
Subject: RE: RMCTC Welding

Steve,
Excavation is unclassified. Unit price is for unforeseen extreme conditions. Geo tech report is not available.
Please review individual spec. sections for testing/inspections that the Owner will be providing.
Thank you,

Bradley S. Blankenbiller
Design Technician
MUHLENBERG GREENE ARCHITECTS, Ltd.

T 610 . 376 . 4927
W MG-Architects.com
955 BERKSHIRE BLVD . STE 101 . WYOMISSING



From: Steve Warnek <Steve@baltonconstruction.com>
Sent: Tuesday, May 24, 2022 9:38 AM
To: Jim A. Sarro, AIA LEED AP+ <JimS@MG-Architects.com>
Cc: Brad Blankenbiller <BradB@MG-Architects.com>
Subject: RMCTC Welding

Is the excavation classified or unclassified? Specs say unclassified, but the bid form has unit prices. I didn't see a geo tech report if it is unclassified.

Will the owner be paying for all testing and inspections?

Thank you,

Steve Warnek
Project Manager/Estimator



Balton Construction, Inc
25 East Main Street
PO Box 600
Richland, PA 17087

Phone: 484-336-4666
Fax: 888-753-6419

Email: steve@baltonconstruction.com

Website: <https://baltonconstruction.com/>

From: Brad Blankenbiller
Sent: Wednesday, May 25, 2022 10:50 AM
To: Steve Warnek; Jim A. Sarro, AIA LEED AP+
Subject: RE: RMCTC Welding

Correct. Refer to plumbing drawings

Bradley S. Blankenbiller
Design Technician
MUHLENBERG GREENE ARCHITECTS, Ltd.

T 610 . 376 . 4927
W MG-Architects.com
955 BERKSHIRE BLVD . STE 101 . WYOMISSING



From: Steve Warnek <Steve@baltonconstruction.com>
Sent: Tuesday, May 24, 2022 9:51 AM
To: Jim A. Sarro, AIA LEED AP+ <JimS@MG-Architects.com>
Cc: Brad Blankenbiller <BradB@MG-Architects.com>
Subject: RE: RMCTC Welding

Please confirm all work from building up to and including the ejector and pit is by the PC (per plumbing drawings)

Thank you,
Steve Warnek
Project Manager/Estimator
484-336-4666

From: Steve Warnek
Sent: Tuesday, May 24, 2022 9:38 AM
To: Jim A. Sarro, AIA LEED AP+ <JimS@MG-Architects.com>
Cc: Brad Blankenbiller <BradB@MG-Architects.com>
Subject: RMCTC Welding

Is the excavation classified or unclassified? Specs say unclassified, but the bid form has unit prices. I didn't see a geo tech report if it is unclassified.

Will the owner be paying for all testing and inspections?

Thank you,
Steve Warnek
Project Manager/Estimator



Balton Construction, Inc
25 East Main Street
PO Box 600
Richland, PA 17087

Phone: 484-336-4666

Fax: 888-753-6419

Email: steve@baltonconstruction.com

Website: <https://baltonconstruction.com/>

From: Brad Blankenbiller
Sent: Wednesday, May 25, 2022 10:53 AM
To: Jim A. Sarro, AIA LEED AP+; don@baltonconstruction.com
Subject: RE: Reading / Muhlenberg Career

Good Morning Don,

Please disregard this note.
No fall protection railing required.

Thank you,

Bradley S. Blankenbiller
Design Technician
MUHLENBERG GREENE ARCHITECTS, Ltd.

T 610 . 376 . 4927
W MG-Architects.com
955 BERKSHIRE BLVD . STE 101 . WYOMISSING



From: Don Ballou <Don@baltonconstruction.com>
Sent: Tuesday, May 24, 2022 11:39 AM
To: Jim A. Sarro, AIA LEED AP+ <JimS@MG-Architects.com>
Cc: Steve Warnek <Steve@baltonconstruction.com>; Grant Straiton <Grant@baltonconstruction.com>
Subject: Reading / Muhlenberg Career

Hi Jim,
Note 5.52.07 on sheet A-103. The note says to see detail...it is for fall protection at 42" high.
Can you tell me where this detail may be and how far would this rail extend? I have not found it on any section nor on an elevation.

Don Ballou
Owner



Balton Construction, Inc
25 East Main Street, PO Box 600, Richland, PA 17087
Cell: 610-927-7838 **Fax:** 888-753-6419
Don@BaltonConstruction.com www.BaltonConstruction.com

Send All Invoices to:
AccountsPayable@BaltonConstruction.com

From: Brad Blankenbiller
Sent: Wednesday, May 25, 2022 10:59 AM
To: Jim A. Sarro, AIA LEED AP+; Steve Warnek
Subject: RE: RMCTC Welding

Steve,

Paving on south side driveway to be asphalt.
Refer to paving cross section on Civil drawings for detail.

Thank you,

Bradley S. Blankenbiller
Design Technician
MUHLENBERG GREENE ARCHITECTS, Ltd.

T 610 . 376 . 4927
W MG-Architects.com
955 BERKSHIRE BLVD . STE 101 . WYOMISSING



From: Steve Warnek <Steve@baltonconstruction.com>
Sent: Tuesday, May 24, 2022 11:50 AM
To: Jim A. Sarro, AIA LEED AP+ <JimS@MG-Architects.com>
Subject: RMCTC Welding

Hi Jim,
AS-103- shows paving at the south side of the new welding building, C4.1 shows sidewalk. Please clarify.
Depending on your answer for the above- Does all paving get a 5" base course? There is a detail for a
2.5" base, but it doesn't look like it would be used anywhere except that south side, which might be
concrete.

Thank you,

Steve Warnek
Project Manager/Estimator



Balton Construction, Inc
25 East Main Street
PO Box 600
Richland, PA 17087

Phone: 484-336-4666
Fax: 888-753-6419

Email: steve@baltonconstruction.com

Website: <https://baltonconstruction.com/>

From: Brad Blankenbiller
Sent: Thursday, May 26, 2022 10:03 AM
To: Grant Straiton
Cc: Jim A. Sarro, AIA LEED AP+
Subject: RE: Muhlenberg Career & Tech Upgrades RFI

Hi Grant,
See below for responses:

- Can you please clarify where $\frac{3}{4}$ " plywood is required behind the wall panels? Some details show it and others don't. Reference detail 1 & 2/A-302. **$\frac{1}{2}$ " plywood to be installed behind all metal wall panels. This will be addressed in an upcoming addendum.**
- The head and jamb details on A-601 reference A-603. Please verify this is correct. **Head and jamb detail references will be updated as part of addendum #1.**

Thank you,

Bradley S. Blankenbiller
Design Technician
MUHLENBERG GREENE ARCHITECTS, Ltd.

T 610 . 376 . 4927
W MG-Architects.com
955 BERKSHIRE BLVD . STE 101 . WYOMISSING



From: Grant Straiton <Grant@baltonconstruction.com>
Sent: Wednesday, May 25, 2022 11:25 AM
To: Brad Blankenbiller <BradB@MG-Architects.com>
Cc: Jim A. Sarro, AIA LEED AP+ <JimS@MG-Architects.com>
Subject: RE: Muhlenberg Career & Tech Upgrades RFI

Hi All,

It was a pleasure meeting you yesterday at the pre-bid. Thanks for your responses earlier. I have a couple more questions for you:

- Can you please clarify where $\frac{3}{4}$ " plywood is required behind the wall panels? Some details show it and others don't. Reference detail 1 & 2/A-302.
- The head and jamb details on A-601 reference A-603. Please verify this is correct.

Thanks for your time, have a great day.

Thank you!
Grant Straiton
Estimator / Assistant Project Manager



Balton Construction, Inc
25 East Main Street, PO Box 600, Richland, PA 17087

Cell: 951-317-8261 Fax: 888-753-6419
grant@baltonconstruction.com www.BaltonConstruction.com

Send All Invoices to:
AccountsPayable@BaltonConstruction.com

From: Brad Blankenbiller <BradB@MG-Architects.com>
Sent: Monday, May 23, 2022 2:36 PM
To: Grant Straiton <Grant@baltonconstruction.com>
Cc: Jim A. Sarro, AIA LEED AP+ <JimS@MG-Architects.com>
Subject: Muhlenberg Career & Tech Upgrades RFI

Hi Grant,
Could you please clarify question 2 and specify what you would like answered?

Thank you,

Bradley S. Blankenbiller
Design Technician
MUHLENBERG GREENE ARCHITECTS, Ltd.

T 610 . 376 . 4927
W MG-Architects.com
955 BERKSHIRE BLVD . STE 101 . WYOMISSING



From: Grant Straiton <Grant@baltonconstruction.com>
Sent: Monday, May 23, 2022 9:59 AM
To: Jim A. Sarro, AIA LEED AP+ <JimS@MG-Architects.com>
Subject: Muhlenberg Career & Tech Upgrades RFI

Good morning Jim,

I hope this email finds you well. I have a few questions regarding this job:

1. S-303 Shows 20 GA. Metal Roof Deck. Note 6 on S-200 calls for 22 GA. Roof Deck. Please advise.
2. Exterior Wall block on A's doesn't match Architectural.
3. Reference mezzanine door locations on 1/A-301 & 2/A-305. Please clarify door and wall layout/schedule for mezzanine.

Thank you!
Grant Straiton
Estimator / Assistant Project Manager



Balton Construction, Inc

25 East Main Street, PO Box 600, Richland, PA 17087

Cell: 951-317-8261 Fax: 888-753-6419

grant@baltonconstruction.com www.BaltonConstruction.com

Send All Invoices to:

AccountsPayable@BaltonConstruction.com

From: Brad Blankenbiller
Sent: Thursday, May 26, 2022 10:09 AM
To: Grant Straiton
Cc: Jim A. Sarro, AIA LEED AP+
Subject: RE: Muhlenberg Career & Tech Upgrades RFI

Grant,
Please refer to section 072100 in the specifications.
Thank you,

Bradley S. Blankenbiller
Design Technician
MUHLENBERG GREENE ARCHITECTS, Ltd.

T 610 . 376 . 4927
W MG-Architects.com
955 BERKSHIRE BLVD . STE 101 . WYOMISSING



From: Grant Straiton <Grant@baltonconstruction.com>
Sent: Wednesday, May 25, 2022 2:43 PM
To: Brad Blankenbiller <BradB@MG-Architects.com>
Cc: Jim A. Sarro, AIA LEED AP+ <JimS@MG-Architects.com>
Subject: RE: Muhlenberg Career & Tech Upgrades RFI

Also, can you please provide a spec for the rigid insulation behind the siding.

Thank you!
Grant Straiton
Estimator / Assistant Project Manager



Balton Construction, Inc
25 East Main Street, PO Box 600, Richland, PA 17087
Cell: 951-317-8261 **Fax:** 888-753-6419
grant@baltonconstruction.com www.BaltonConstruction.com

Send All Invoices to:
AccountsPayable@BaltonConstruction.com

From: Grant Straiton
Sent: Wednesday, May 25, 2022 11:25 AM
To: 'Brad Blankenbiller' <BradB@MG-Architects.com>
Cc: Jim A. Sarro, AIA LEED AP+ <JimS@MG-Architects.com>
Subject: RE: Muhlenberg Career & Tech Upgrades RFI

Hi All,

It was a pleasure meeting you yesterday at the pre-bid. Thanks for your responses earlier. I have a couple more questions for you:

- Can you please clarify where 3/4" plywood is required behind the wall panels? Some details show it and others don't. Reference detail 1 & 2/A-302.
- The head and jamb details on A-601 reference A-603. Please verify this is correct.

Thanks for your time, have a great day.

Thank you!
Grant Straiton
Estimator / Assistant Project Manager



Balton Construction, Inc
25 East Main Street, PO Box 600, Richland, PA 17087
Cell: 951-317-8261 **Fax:** 888-753-6419
grant@baltonconstruction.com www.BaltonConstruction.com

Send All Invoices to:
AccountsPayable@BaltonConstruction.com

From: Brad Blankenbiller <BradB@MG-Architects.com>
Sent: Monday, May 23, 2022 2:36 PM
To: Grant Straiton <Grant@baltonconstruction.com>
Cc: Jim A. Sarro, AIA LEED AP+ <JimS@MG-Architects.com>
Subject: Muhlenberg Career & Tech Upgrades RFI

Hi Grant,
Could you please clarify question 2 and specify what you would like answered?

Thank you,

Bradley S. Blankenbiller
Design Technician
MUHLENBERG GREENE ARCHITECTS, Ltd.

T 610 . 376 . 4927
W MG-Architects.com
955 BERKSHIRE BLVD . STE 101 . WYOMISSING

A small blue circular icon with a white lowercase 'f' inside, representing the Facebook logo.

From: Grant Straiton <Grant@baltonconstruction.com>
Sent: Monday, May 23, 2022 9:59 AM
To: Jim A. Sarro, AIA LEED AP+ <JimS@MG-Architects.com>
Subject: Muhlenberg Career & Tech Upgrades RFI

Good morning Jim,

I hope this email finds you well. I have a few questions regarding this job:

1. S-303 Shows 20 GA. Metal Roof Deck. Note 6 on S-200 calls for 22 GA. Roof Deck. Please advise.
2. Exterior Wall block on A's doesn't match Architectural.
3. Reference mezzanine door locations on 1/A-301 & 2/A-305. Please clarify door and wall layout/schedule for mezzanine.

Thank you!

Grant Straiton

Estimator / Assistant Project Manager



Balton Construction, Inc

25 East Main Street, PO Box 600, Richland, PA 17087

Cell: 951-317-8261 **Fax:** 888-753-6419

grant@baltonconstruction.com www.BaltonConstruction.com

Send All Invoices to:

AccountsPayable@BaltonConstruction.com

From: Brad Blankenbiller
Sent: Thursday, May 26, 2022 10:23 AM
To: Grant Straiton
Cc: Jim A. Sarro, AIA LEED AP+
Subject: RE: Muhlenberg RFI

See below for responses in **green**:

Under project coordinator responsibilities you state "Provide field surveys of in-progress construction and site work **and final property Survey**". Is this required? **Yes. this is required.**

Also, in spec 102800 you list a waste receptacle. Where is this indicated on the drawings? **Waste receptacle's not required.**

Bradley S. Blankenbiller
Design Technician
MUHLENBERG GREENE ARCHITECTS, Ltd.

T 610 . 376 . 4927
W MG-Architects.com
955 BERKSHIRE BLVD . STE 101 . WYOMISSING



From: Grant Straiton <Grant@baltonconstruction.com>
Sent: Thursday, May 26, 2022 9:39 AM
To: Brad Blankenbiller <BradB@MG-Architects.com>
Cc: Jim A. Sarro, AIA LEED AP+ <JimS@MG-Architects.com>
Subject: Muhlenberg RFI

Good morning,

Under project coordinator responsibilities you state "Provide field surveys of in-progress construction and site work **and final property Survey**". Is this required?

Also, in spec 102800 you list a waste receptacle. Where is this indicated on the drawings?

Thank you!
Grant Straiton
Estimator / Assistant Project Manager



Balton Construction, Inc
25 East Main Street, PO Box 600, Richland, PA 17087
Cell: 951-317-8261 **Fax:** 888-753-6419
grant@baltonconstruction.com www.BaltonConstruction.com

Send All Invoices to:

AccountsPayable@BaltonConstruction.com

From: Brad Blankenbiller
Sent: Thursday, May 26, 2022 4:10 PM
To: Grant Straiton
Cc: Jim A. Sarro, AIA LEED AP+
Subject: RE: Muhlenberg RFI

Roof deck to be 20 gauge.

Bradley S. Blankenbiller
Design Technician
MUHLENBERG GREENE ARCHITECTS, Ltd.

T 610 . 376 . 4927
W MG-Architects.com
955 BERKSHIRE BLVD . STE 101 . WYOMISSING



From: Grant Straiton <Grant@baltonconstruction.com>
Sent: Thursday, May 26, 2022 10:04 AM
To: Brad Blankenbiller <BradB@MG-Architects.com>
Cc: Jim A. Sarro, AIA LEED AP+ <JimS@MG-Architects.com>
Subject: RE: Muhlenberg RFI

Also, on the structural drawings the roof deck gauge is drawn as 20ga on S-303 and note 4 on S-200 says 22ga, please clarify.

Thank you!
Grant Straiton
Estimator / Assistant Project Manager



Balton Construction, Inc
25 East Main Street, PO Box 600, Richland, PA 17087
Cell: 951-317-8261 **Fax:** 888-753-6419
grant@baltonconstruction.com www.BaltonConstruction.com

Send All Invoices to:
AccountsPayable@BaltonConstruction.com

From: Grant Straiton
Sent: Thursday, May 26, 2022 9:39 AM
To: 'Brad Blankenbiller' <BradB@MG-Architects.com>
Cc: 'Jim A. Sarro, AIA LEED AP+' <JimS@MG-Architects.com>
Subject: Muhlenberg RFI

Good morning,

Under project coordinator responsibilities you state "Provide field surveys of in-progress construction and site work **and final property Survey**". Is this required?

Also, in spec 102800 you list a waste receptacle. Where is this indicated on the drawings?

Thank you!

Grant Straiton

Estimator / Assistant Project Manager



Balton Construction, Inc

25 East Main Street, PO Box 600, Richland, PA 17087

Cell: 951-317-8261 Fax: 888-753-6419

grant@baltonconstruction.com www.BaltonConstruction.com

Send All Invoices to:

AccountsPayable@BaltonConstruction.com

From: Brad Blankenbiller
Sent: Thursday, May 26, 2022 4:07 PM
To: Steve Warnek; Jim A. Sarro, AIA LEED AP+
Subject: RE: RMCTC Welding

Hi Steve,
See below for response in **green**:

Per the specs, for the concrete, the owner is testing everything except the sidewalk- which is by us.
Will you require the spray testing for the siding? **No.**

Bradley S. Blankenbiller
Design Technician
MUHLENBERG GREENE ARCHITECTS, Ltd.

T 610 . 376 . 4927
W MG-Architects.com
955 BERKSHIRE BLVD . STE 101 . WYOMISSING



From: Steve Warnek <Steve@baltonconstruction.com>
Sent: Thursday, May 26, 2022 11:15 AM
To: Brad Blankenbiller <BradB@MG-Architects.com>; Jim A. Sarro, AIA LEED AP+ <JimS@MG-Architects.com>
Subject: RE: RMCTC Welding

Hi Brad,
Per the specs, for the concrete, the owner is testing everything except the sidewalk- which is by us.
Will you require the spray testing for the siding?

Thank you,
Steve Warnek
Project Manager/Estimator
484-336-4666

From: Brad Blankenbiller <BradB@MG-Architects.com>
Sent: Wednesday, May 25, 2022 10:47 AM
To: Steve Warnek <Steve@baltonconstruction.com>; Jim A. Sarro, AIA LEED AP+ <JimS@MG-Architects.com>
Subject: RE: RMCTC Welding

Steve,
Excavation is unclassified. Unit price is for unforeseen extreme conditions. Geo tech report is not available.
Please review individual spec. sections for testing/inspections that the Owner will be providing.
Thank you,

Bradley S. Blankenbiller
Design Technician

T 610 . 376 . 4927
W MG-Architects.com



From: Steve Warnek <Steve@baltonconstruction.com>
Sent: Tuesday, May 24, 2022 9:38 AM
To: Jim A. Sarro, AIA LEED AP+ <JimS@MG-Architects.com>
Cc: Brad Blankenbiller <BradB@MG-Architects.com>
Subject: RMCTC Welding

Is the excavation classified or unclassified? Specs say unclassified, but the bid form has unit prices. I didn't see a geo tech report if it is unclassified.

Will the owner be paying for all testing and inspections?

Thank you,

Steve Warnek
Project Manager/Estimator



Balton Construction, Inc
25 East Main Street
PO Box 600
Richland, PA 17087

Phone: 484-336-4666
Fax: 888-753-6419

Email: steve@baltonconstruction.com
Website: <https://baltonconstruction.com/>

From: Brad Blankenbiller
Sent: Thursday, May 26, 2022 4:02 PM
To: Grant Straiton
Cc: Jim A. Sarro, AIA LEED AP+
Subject: RE: Muhlenberg RFI

1. H.C. will be responsible for the concrete equipment pads.
2. G.C is responsible for all painting inside the building.

Bradley S. Blankenbiller
Design Technician
MUHLENBERG GREENE ARCHITECTS, Ltd.

T 610 . 376 . 4927
W MG-Architects.com

955 BERKSHIRE BLVD . STE 101 . WYOMISSING



From: Grant Straiton <Grant@baltonconstruction.com>
Sent: Thursday, May 26, 2022 11:42 AM
To: Brad Blankenbiller <BradB@MG-Architects.com>
Cc: Jim A. Sarro, AIA LEED AP+ <JimS@MG-Architects.com>
Subject: Muhlenberg RFI

Thanks for your responses. Here is another one:

Please clarify who is responsible for the concrete pad outside of the welding building.

Front end specs: 5. Equipment pads for the work of each contract shall be the work of **each contract for its own work.**

1.10 HVAC CONTRACT: 15. Provide an exterior mounted central welding smoke collector system (on the G.C. provide concrete equipment pad)...

AS-103 Note 3.30.05: Cast in place concrete pad by H.C.....

Please clarify who is responsible to painting mechanical and electrical work.

Front End Specs: 7. Painting for the work of each contract shall be the work of **each contract for its own work.**

C. Narrative Description of Contract No. 1 - General Construction Contract: 29.

Miscellaneous items, including painting of mechanical and electrical work.

Thank you!

Grant Straiton

Estimator / Assistant Project Manager



Balton Construction, Inc

25 East Main Street, PO Box 600, Richland, PA 17087

Cell: 951-317-8261 Fax: 888-753-6419

grant@baltonconstruction.com www.BaltonConstruction.com

Send All Invoices to:

AccountsPayable@BaltonConstruction.com

From: Brad Blankenbiller
Sent: Thursday, May 26, 2022 3:58 PM
To: Grant Straiton
Cc: Jim A. Sarro, AIA LEED AP+
Subject: RE: Muhlenberg RFI

The H.C. will be responsible for the ductwork supports.

Bradley S. Blankenbiller
Design Technician
MUHLENBERG GREENE ARCHITECTS, Ltd.

T 610 . 376 . 4927
W MG-Architects.com
955 BERKSHIRE BLVD . STE 101 . WYOMISSING



From: Grant Straiton <Grant@baltonconstruction.com>
Sent: Thursday, May 26, 2022 11:46 AM
To: Brad Blankenbiller <BradB@MG-Architects.com>
Cc: Jim A. Sarro, AIA LEED AP+ <JimS@MG-Architects.com>
Subject: RE: Muhlenberg RFI

Please clarify who is responsible for the elevated ductwork supports (11/S-300 & 12/S-300 piers and steel)

Extent of Contract: 3. Blocking, backing panels, sleeves, and metal fabrication supports for the work of each contract shall be the work of **each contract for its own work**.

Thank you!
Grant Straiton
Estimator / Assistant Project Manager



Balton Construction, Inc
25 East Main Street, PO Box 600, Richland, PA 17087
Cell: 951-317-8261 **Fax:** 888-753-6419
grant@baltonconstruction.com www.BaltonConstruction.com

Send All Invoices to:
AccountsPayable@BaltonConstruction.com

From: Grant Straiton
Sent: Thursday, May 26, 2022 11:42 AM
To: 'Brad Blankenbiller' <BradB@MG-Architects.com>
Cc: Jim A. Sarro, AIA LEED AP+ <JimS@MG-Architects.com>
Subject: Muhlenberg RFI

Thanks for your responses. Here is another one:

Please clarify who is responsible for the concrete pad outside of the welding building.

Front end specs: 5. Equipment pads for the work of each contract shall be the work of **each contract for its own work.**

1.10 HVAC CONTRACT: 15. Provide an exterior mounted central welding smoke collector system (on the G.C. provide concrete equipment pad)..

AS-103 Note 3.30.05: Cast in place concrete pad by H.C.....

Please clarify who is responsible to painting mechanical and electrical work.

Front End Specs: 7. Painting for the work of each contract shall be the work of **each contract for its own work.**

C. **Narrative Description of Contract No. 1 - General Construction Contract:** 29. Miscellaneous items, including painting of mechanical and electrical work.

Thank you!

Grant Straiton

Estimator / Assistant Project Manager



Balton Construction, Inc

25 East Main Street, PO Box 600, Richland, PA 17087

Cell: 951-317-8261 Fax: 888-753-6419

grant@baltonconstruction.com www.BaltonConstruction.com

Send All Invoices to:

AccountsPayable@BaltonConstruction.com

From: Brad Blankenbiller
Sent: Thursday, May 26, 2022 3:55 PM
To: Grant Straiton
Cc: Jim A. Sarro, AIA LEED AP+
Subject: RE: Muhlenberg RFI

20 gauge metal studs.
Thank you,

Bradley S. Blankenbiller
Design Technician
MUHLENBERG GREENE ARCHITECTS, Ltd.

T 610 . 376 . 4927
W MG-Architects.com
955 BERKSHIRE BLVD . STE 101 . WYOMISSING



From: Grant Straiton <Grant@baltonconstruction.com>
Sent: Thursday, May 26, 2022 3:29 PM
To: Brad Blankenbiller <BradB@MG-Architects.com>
Cc: Jim A. Sarro, AIA LEED AP+ <JimS@MG-Architects.com>
Subject: Muhlenberg RFI

Good afternoon,

Please provide 3-5/8" metal stud gauge.

Thank you!
Grant Straiton
Estimator / Assistant Project Manager



Balton Construction, Inc
25 East Main Street, PO Box 600, Richland, PA 17087
Cell: 951-317-8261 **Fax:** 888-753-6419
grant@baltonconstruction.com www.BaltonConstruction.com

Send All Invoices to:
AccountsPayable@BaltonConstruction.com

From: Brad Blankenbiller
Sent: Thursday, May 26, 2022 3:53 PM
To: Grant Straiton
Cc: Jim A. Sarro, AIA LEED AP+
Subject: RE: Muhlenberg RFI

Hi Grant,

060 reinforced EPDM with 20 yr. warranty to be used.

Thank you,

Bradley S. Blankenbiller
Design Technician
MUHLENBERG GREENE ARCHITECTS, Ltd.

T 610 . 376 . 4927
W MG-Architects.com
955 BERKSHIRE BLVD . STE 101 . WYOMISSING



From: Grant Straiton <Grant@baltonconstruction.com>
Sent: Thursday, May 26, 2022 3:38 PM
To: Brad Blankenbiller <BradB@MG-Architects.com>
Cc: Jim A. Sarro, AIA LEED AP+ <JimS@MG-Architects.com>
Subject: RE: Muhlenberg RFI

Please see below:

They are asking for a 20yr warranty. It says they want reinforced epdm that only comes in 060, which is fine for a 20yr. Then it says they want white 090 which does not come in reinforced and you only need 090 for a 30 yr warranty. Not sure what they are asking for. I would guess they would only want the 060 reinforced if they are looking for a 20yr. The 090 white is going to take over a year to get and is now way over \$2000 a roll. Please advise.

Thank you!
Grant Straiton
Estimator / Assistant Project Manager



Balton Construction, Inc
25 East Main Street, PO Box 600, Richland, PA 17087
Cell: 951-317-8261 **Fax:** 888-753-6419
grant@baltonconstruction.com www.BaltonConstruction.com

Send All Invoices to:
AccountsPayable@BaltonConstruction.com

From: Grant Straiton
Sent: Thursday, May 26, 2022 3:29 PM
To: 'Brad Blankenbiller' <BradB@MG-Architects.com>
Cc: Jim A. Sarro, AIA LEED AP+ <JimS@MG-Architects.com>
Subject: Muhlenberg RFI

Good afternoon,

Please provide 3-5/8" metal stud gauge.

Thank you!
Grant Straiton
Estimator / Assistant Project Manager



Balton Construction, Inc
25 East Main Street, PO Box 600, Richland, PA 17087
Cell: 951-317-8261 **Fax:** 888-753-6419
grant@baltonconstruction.com www.BaltonConstruction.com

Send All Invoices to:
AccountsPayable@BaltonConstruction.com

From: Brad Blankenbiller
Sent: Friday, May 27, 2022 1:28 PM
To: Grant Straiton
Cc: Jim A. Sarro, AIA LEED AP+
Subject: RE: Muhlenberg RFI

Hi Grant,
See below for response in **green**:

1. Welding Building: A-102 Note 2: Unless noted otherwise, all equipment shown on this plan is to be provided by Owner.

Does this mean the equipment is New and will be installed by Owner or installed by G.C?

The Owner will be purchasing some new equipment. All existing equipment will need to be relocated into the new building by the G.C. All equipment, new and existing, will be installed by the G.C.

2. Welding Building: A-102 Note 4: G.C. to relocate existing equipment from current location to where shown.

Where is this equipment located and which ones are to be relocated? **The equipment is located in the existing welding classroom. All equipment is to be relocated and reinstalled by the G.C.**

3. Does the equipment noted to be relocated require securing to the floor? Please clarify. **Not that we are aware of.**
4. Please clarify if there is any existing equipment being relocated to the Welding Building which the GC is responsible. **Yes, G.C. is responsible for relocating and installing all existing equipment.**
5. Can you please provide the size of the tanks called to be painted in the interior paint spec: "c. Tanks that do not have factory-applied final finishes." **Size of misc. tanks is unknown at this time. This will need to be coordinated in the field during construction.**

Bradley S. Blankenbiller
Design Technician
MUHLENBERG GREENE ARCHITECTS, Ltd.

T 610 . 376 . 4927
W MG-Architects.com
955 BERKSHIRE BLVD . STE 101 . WYOMISSING



From: Grant Straiton <Grant@baltonconstruction.com>
Sent: Friday, May 27, 2022 8:44 AM
To: Brad Blankenbiller <BradB@MG-Architects.com>
Cc: Jim A. Sarro, AIA LEED AP+ <JimS@MG-Architects.com>
Subject: RE: Muhlenberg RFI

Good morning,

1. Welding Building: A-102 Note 2: Unless noted otherwise, all equipment shown on this plan is to be provided by Owner.

Does this mean the equipment is New and will be installed by Owner or installed by G.C?

2. Welding Building: A-102 Note 4: G.C. to relocate existing equipment from current location to where shown.

Where is this equipment located and which ones are to be relocated?

3. Does the equipment noted to be relocated require securing to the floor? Please clarify.
4. Please clarify if there is any existing equipment being relocated to the Welding Building which the GC is responsible.
5. Can you please provide the size of the tanks called to be painted in the interior paint spec: "c. Tanks that do not have factory-applied final finishes."

Thank you!
Grant Straiton
Estimator / Assistant Project Manager



Balton Construction, Inc
25 East Main Street, PO Box 600, Richland, PA 17087
Cell: 951-317-8261 **Fax:** 888-753-6419
grant@baltonconstruction.com www.BaltonConstruction.com

Send All Invoices to:
AccountsPayable@BaltonConstruction.com

From: Grant Straiton
Sent: Thursday, May 26, 2022 4:12 PM
To: 'Brad Blankenbiller' <BradB@MG-Architects.com>
Cc: Jim A. Sarro, AIA LEED AP+ <JimS@MG-Architects.com>
Subject: RE: Muhlenberg RFI

Thanks so much guys. Have a great night!

Thank you!
Grant Straiton
Estimator / Assistant Project Manager



Balton Construction, Inc
25 East Main Street, PO Box 600, Richland, PA 17087
Cell: 951-317-8261 **Fax:** 888-753-6419
grant@baltonconstruction.com www.BaltonConstruction.com

Send All Invoices to:
AccountsPayable@BaltonConstruction.com

From: Brad Blankenbiller <BradB@MG-Architects.com>
Sent: Thursday, May 26, 2022 4:10 PM
To: Grant Straiton <Grant@baltonconstruction.com>
Cc: Jim A. Sarro, AIA LEED AP+ <JimS@MG-Architects.com>
Subject: RE: Muhlenberg RFI

Roof deck to be 20 gauge.

Bradley S. Blankenbiller
Design Technician
MUHLENBERG GREENE ARCHITECTS, Ltd.

T 610 . 376 . 4927
W MG-Architects.com
955 BERKSHIRE BLVD . STE 101 . WYOMISSING



From: Grant Straiton <Grant@baltonconstruction.com>
Sent: Thursday, May 26, 2022 10:04 AM
To: Brad Blankenbiller <BradB@MG-Architects.com>
Cc: Jim A. Sarro, AIA LEED AP+ <JimS@MG-Architects.com>
Subject: RE: Muhlenberg RFI

Also, on the structural drawings the roof deck gauge is drawn as 20ga on S-303 and note 4 on S-200 says 22ga, please clarify.

Thank you!
Grant Straiton
Estimator / Assistant Project Manager



Balton Construction, Inc
25 East Main Street, PO Box 600, Richland, PA 17087
Cell: 951-317-8261 **Fax:** 888-753-6419
grant@baltonconstruction.com www.BaltonConstruction.com

Send All Invoices to:
AccountsPayable@BaltonConstruction.com

From: Grant Straiton
Sent: Thursday, May 26, 2022 9:39 AM
To: 'Brad Blankenbiller' <BradB@MG-Architects.com>
Cc: 'Jim A. Sarro, AIA LEED AP+' <JimS@MG-Architects.com>
Subject: Muhlenberg RFI

Good morning,

Under project coordinator responsibilities you state “Provide field surveys of in-progress construction and site work **and final property Survey**”. Is this required?

Also, in spec 102800 you list a waste receptacle. Where is this indicated on the drawings?

Thank you!

Grant Straiton

Estimator / Assistant Project Manager



Balton Construction, Inc

25 East Main Street, PO Box 600, Richland, PA 17087

Cell: 951-317-8261 **Fax:** 888-753-6419

grant@baltonconstruction.com www.BaltonConstruction.com

Send All Invoices to:

AccountsPayable@BaltonConstruction.com

From: Brad Blankenbiller
Sent: Friday, May 27, 2022 1:33 PM
To: Grant Straiton
Cc: Jim A. Sarro, AIA LEED AP+
Subject: RE: Muhlenberg RFI

G.C. is responsible for removing and replacing ceiling grid and tile as indicated on the drawings.

Thank you,

Bradley S. Blankenbiller

Design Technician

MUHLENBERG GREENE ARCHITECTS, Ltd.

T 610 . 376 . 4927

W MG-Architects.com

955 BERKSHIRE BLVD . STE 101 . WYOMISSING



From: Grant Straiton <Grant@baltonconstruction.com>
Sent: Friday, May 27, 2022 8:46 AM
To: Brad Blankenbiller <BradB@MG-Architects.com>
Cc: Jim A. Sarro, AIA LEED AP+ <JimS@MG-Architects.com>
Subject: RE: Muhlenberg RFI

1.11 Electrical Contract: Note 9: Provide ceiling tile removal in existing building location to do his work
Sheet E-002 Note 6: GC shall remove and replace ceiling grid and tile as required to install power
conduits, intercom fiber.....

Front End Specs: Note 8: Cutting and Patching: Provided under each contract for its own work.

Please clarify who is responsible to remove and replace ceiling grid.

Thank you!

Grant Straiton

Estimator / Assistant Project Manager



Balton Construction, Inc

25 East Main Street, PO Box 600, Richland, PA 17087

Cell: 951-317-8261 **Fax:** 888-753-6419

grant@baltonconstruction.com www.BaltonConstruction.com

Send All Invoices to:

AccountsPayable@BaltonConstruction.com

From: Grant Straiton
Sent: Friday, May 27, 2022 8:44 AM

To: 'Brad Blankenbiller' <BradB@MG-Architects.com>
Cc: 'Jim A. Sarro, AIA LEED AP+' <JimS@MG-Architects.com>
Subject: RE: Muhlenberg RFI

Good morning,

1. Welding Building: A-102 Note 2: Unless noted otherwise, all equipment shown on this plan is to be provided by Owner.
Does this mean the equipment is New and will be installed by Owner or installed by G.C.?
2. Welding Building: A-102 Note 4: G.C. to relocate existing equipment from current location to where shown.
Where is this equipment located and which ones are to be relocated?
3. Does the equipment noted to be relocated require securing to the floor? Please clarify.
4. Please clarify if there is any existing equipment being relocated to the Welding Building which the GC is responsible.
5. Can you please provide the size of the tanks called to be painted in the interior paint spec: "c. Tanks that do not have factory-applied final finishes."

Thank you!
Grant Straiton
Estimator / Assistant Project Manager



Balton Construction, Inc
25 East Main Street, PO Box 600, Richland, PA 17087
Cell: 951-317-8261 **Fax:** 888-753-6419
grant@baltonconstruction.com www.BaltonConstruction.com

Send All Invoices to:
AccountsPayable@BaltonConstruction.com

From: Grant Straiton
Sent: Thursday, May 26, 2022 4:12 PM
To: 'Brad Blankenbiller' <BradB@MG-Architects.com>
Cc: Jim A. Sarro, AIA LEED AP+ <JimS@MG-Architects.com>
Subject: RE: Muhlenberg RFI

Thanks so much guys. Have a great night!

Thank you!
Grant Straiton
Estimator / Assistant Project Manager



Balton Construction, Inc

25 East Main Street, PO Box 600, Richland, PA 17087

Cell: 951-317-8261 Fax: 888-753-6419

grant@baltonconstruction.com www.BaltonConstruction.com

Send All Invoices to:

AccountsPayable@BaltonConstruction.com

From: Brad Blankenbiller <BradB@MG-Architects.com>

Sent: Thursday, May 26, 2022 4:10 PM

To: Grant Straiton <Grant@baltonconstruction.com>

Cc: Jim A. Sarro, AIA LEED AP+ <JimS@MG-Architects.com>

Subject: RE: Muhlenberg RFI

Roof deck to be 20 gauge.

Bradley S. Blankenbiller

Design Technician

MUHLENBERG GREENE ARCHITECTS, Ltd.

T 610 . 376 . 4927

W MG-Architects.com

955 BERKSHIRE BLVD . STE 101 . WYOMISSING



From: Grant Straiton <Grant@baltonconstruction.com>

Sent: Thursday, May 26, 2022 10:04 AM

To: Brad Blankenbiller <BradB@MG-Architects.com>

Cc: Jim A. Sarro, AIA LEED AP+ <JimS@MG-Architects.com>

Subject: RE: Muhlenberg RFI

Also, on the structural drawings the roof deck gauge is drawn as 20ga on S-303 and note 4 on S-200 says 22ga, please clarify.

Thank you!

Grant Straiton

Estimator / Assistant Project Manager



Balton Construction, Inc

25 East Main Street, PO Box 600, Richland, PA 17087

Cell: 951-317-8261 Fax: 888-753-6419

grant@baltonconstruction.com www.BaltonConstruction.com

Send All Invoices to:

AccountsPayable@BaltonConstruction.com

From: Grant Straiton

Sent: Thursday, May 26, 2022 9:39 AM

To: 'Brad Blankenbiller' <BradB@MG-Architects.com>

Cc: 'Jim A. Sarro, AIA LEED AP+' <JimS@MG-Architects.com>

Subject: Muhlenberg RFI

Good morning,

Under project coordinator responsibilities you state "Provide field surveys of in-progress construction and site work **and final property Survey**". Is this required?

Also, in spec 102800 you list a waste receptacle. Where is this indicated on the drawings?

Thank you!

Grant Straiton

Estimator / Assistant Project Manager



Balton Construction, Inc

25 East Main Street, PO Box 600, Richland, PA 17087

Cell: 951-317-8261 **Fax:** 888-753-6419

grant@baltonconstruction.com www.BaltonConstruction.com

Send All Invoices to:

AccountsPayable@BaltonConstruction.com

From: Brad Blankenbiller
Sent: Friday, May 27, 2022 1:44 PM
To: Steve Warnek; Jim A. Sarro, AIA LEED AP+
Subject: RE: RMCTC Welding

Yes, insulated glass.

Bradley S. Blankenbiller
Design Technician
MUHLENBERG GREENE ARCHITECTS, Ltd.

T 610 . 376 . 4927
W MG-Architects.com
955 BERKSHIRE BLVD . STE 101 . WYOMISSING



From: Steve Warnek <Steve@baltonconstruction.com>
Sent: Friday, May 27, 2022 9:23 AM
To: Brad Blankenbiller <BradB@MG-Architects.com>; Jim A. Sarro, AIA LEED AP+ <JimS@MG-Architects.com>
Subject: RE: RMCTC Welding

Hi Brad and Jim,
All glass indicated on drawing A-601 says LG (Laminated glass), but SF-1 is an exterior door and frame, do you want Insulated glass?

Thank you,
Steve Warnek
Project Manager/Estimator
484-336-4666

From: Brad Blankenbiller <BradB@MG-Architects.com>
Sent: Thursday, May 26, 2022 4:07 PM
To: Steve Warnek <Steve@baltonconstruction.com>; Jim A. Sarro, AIA LEED AP+ <JimS@MG-Architects.com>
Subject: RE: RMCTC Welding

Hi Steve,
See below for response in **green**:

Per the specs, for the concrete, the owner is testing everything except the sidewalk- which is by us. Will you require the spray testing for the siding? **No.**

Bradley S. Blankenbiller
Design Technician
MUHLENBERG GREENE ARCHITECTS, Ltd.

T 610 . 376 . 4927
W MG-Architects.com
955 BERKSHIRE BLVD . STE 101 . WYOMISSING



From: Steve Warnek <Steve@baltonconstruction.com>
Sent: Thursday, May 26, 2022 11:15 AM
To: Brad Blankenbiller <BradB@MG-Architects.com>; Jim A. Sarro, AIA LEED AP+ <JimS@MG-Architects.com>
Subject: RE: RMCTC Welding

Hi Brad,
Per the specs, for the concrete, the owner is testing everything except the sidewalk- which is by us.
Will you require the spray testing for the siding?

Thank you,
Steve Warnek
Project Manager/Estimator
484-336-4666

From: Brad Blankenbiller <BradB@MG-Architects.com>
Sent: Wednesday, May 25, 2022 10:47 AM
To: Steve Warnek <Steve@baltonconstruction.com>; Jim A. Sarro, AIA LEED AP+ <JimS@MG-Architects.com>
Subject: RE: RMCTC Welding

Steve,
Excavation is unclassified. Unit price is for unforeseen extreme conditions. Geo tech report is not available.
Please review individual spec. sections for testing/inspections that the Owner will be providing.
Thank you,

Bradley S. Blankenbiller
Design Technician
MUHLENBERG GREENE ARCHITECTS, Ltd.

T 610 . 376 . 4927
W MG-Architects.com
955 BERKSHIRE BLVD . STE 101 . WYOMISSING



From: Steve Warnek <Steve@baltonconstruction.com>
Sent: Tuesday, May 24, 2022 9:38 AM
To: Jim A. Sarro, AIA LEED AP+ <JimS@MG-Architects.com>
Cc: Brad Blankenbiller <BradB@MG-Architects.com>
Subject: RMCTC Welding

Is the excavation classified or unclassified? Specs say unclassified, but the bid form has unit prices. I didn't see a geo tech report if it is unclassified.

Will the owner be paying for all testing and inspections?

Thank you,

Steve Warnek
Project Manager/Estimator



Balton Construction, Inc
25 East Main Street
PO Box 600
Richland, PA 17087

Phone: 484-336-4666
Fax: 888-753-6419

Email: steve@baltonconstruction.com
Website: <https://baltonconstruction.com/>

From: Brad Blankenbiller
Sent: Friday, May 27, 2022 1:40 PM
To: Steve Warnek; Jim A. Sarro, AIA LEED AP+
Subject: RE: RMCTC Welding

Hi Steve,
Exterior doors to be thermally broken. The main entrance storefront to be a thermal door that is compatible with the storefront system. Interior storefront doors to be non-thermal.
Thank you,

Bradley S. Blankenbiller
Design Technician

MUHLENBERG GREENE ARCHITECTS, Ltd.

T 610 . 376 . 4927
W MG-Architects.com

955 BERKSHIRE BLVD . STE 101 . WYOMISSING



From: Steve Warnek <Steve@baltonconstruction.com>
Sent: Friday, May 27, 2022 9:16 AM
To: Brad Blankenbiller <BradB@MG-Architects.com>; Jim A. Sarro, AIA LEED AP+ <JimS@MG-Architects.com>
Subject: RE: RMCTC Welding

Hi Brad and Jim,
The spec for the doors call for medium stile doors, 1 3/4" thick, then it says thermally broken which makes the door 2 3/8" thick. Which door is required
Thermal yes or no?

Thank you,
Steve Warnek
Project Manager/Estimator
484-336-4666

From: Brad Blankenbiller <BradB@MG-Architects.com>
Sent: Thursday, May 26, 2022 4:07 PM
To: Steve Warnek <Steve@baltonconstruction.com>; Jim A. Sarro, AIA LEED AP+ <JimS@MG-Architects.com>
Subject: RE: RMCTC Welding

Hi Steve,
See below for response in **green**:

Per the specs, for the concrete, the owner is testing everything except the sidewalk- which is by us.
Will you require the spray testing for the siding? **No.**

Bradley S. Blankenbiller
Design Technician

T 610 . 376 . 4927
W MG-Architects.com



From: Steve Warnek <Steve@baltonconstruction.com>

Sent: Thursday, May 26, 2022 11:15 AM

To: Brad Blankenbiller <BradB@MG-Architects.com>; Jim A. Sarro, AIA LEED AP+ <JimS@MG-Architects.com>

Subject: RE: RMCTC Welding

Hi Brad,

Per the specs, for the concrete, the owner is testing everything except the sidewalk- which is by us. Will you require the spray testing for the siding?

Thank you,
Steve Warnek
Project Manager/Estimator
484-336-4666

From: Brad Blankenbiller <BradB@MG-Architects.com>

Sent: Wednesday, May 25, 2022 10:47 AM

To: Steve Warnek <Steve@baltonconstruction.com>; Jim A. Sarro, AIA LEED AP+ <JimS@MG-Architects.com>

Subject: RE: RMCTC Welding

Steve,

Excavation is unclassified. Unit price is for unforeseen extreme conditions. Geo tech report is not available.

Please review individual spec. sections for testing/inspections that the Owner will be providing.

Thank you,

Bradley S. Blankenbiller

Design Technician

MUHLENBERG GREENE ARCHITECTS, Ltd.

T 610 . 376 . 4927

W MG-Architects.com

955 BERKSHIRE BLVD . STE 101 . WYOMISSING



From: Steve Warnek <Steve@baltonconstruction.com>

Sent: Tuesday, May 24, 2022 9:38 AM

To: Jim A. Sarro, AIA LEED AP+ <JimS@MG-Architects.com>

Cc: Brad Blankenbiller <BradB@MG-Architects.com>

Subject: RMCTC Welding

Is the excavation classified or unclassified? Specs say unclassified, but the bid form has unit prices. I didn't see a geo tech report if it is unclassified.

Will the owner be paying for all testing and inspections?

Thank you,

Steve Warnek
Project Manager/Estimator



Balton Construction, Inc
25 East Main Street
PO Box 600
Richland, PA 17087

Phone: 484-336-4666
Fax: 888-753-6419

Email: steve@baltonconstruction.com
Website: <https://baltonconstruction.com/>

From: Brad Blankenbiller
Sent: Tuesday, May 31, 2022 1:30 PM
To: Steve Warnek; Jim A. Sarro, AIA LEED AP+
Subject: RE: RMCTC Welding

Hi Steve,

¼" laminated non-insulated glass for interior storefronts. Insulated glass for all exterior storefronts and exterior windows.

SF-3 opening to be 7'-4" overall frame height with 7'-0" door.

Thanks,

Bradley S. Blankenbiller

Design Technician

MUHLENBERG GREENE ARCHITECTS, Ltd.

T 610 . 376 . 4927

W MG-Architects.com

955 BERKSHIRE BLVD . STE 101 . WYOMISSING



From: Steve Warnek <Steve@baltonconstruction.com>

Sent: Tuesday, May 31, 2022 9:49 AM

To: Jim A. Sarro, AIA LEED AP+ <JimS@MG-Architects.com>; Brad Blankenbiller <BradB@MG-Architects.com>

Subject: RMCTC Welding

Hi Jim and Brad,

Spec calls for Laminated glass under the insulated glass spec. but the description is for ¼", please clarify what is required.

Door 101C Calls for 3070door, SF-3 frame has door opening at 7'0" and overall frame height as 7'0". Please clarify.

Thank you,

Steve Warnek

Project Manager/Estimator



Balton Construction, Inc
25 East Main Street
PO Box 600
Richland, PA 17087

Phone: 484-336-4666

Fax: 888-753-6419

Email: steve@baltonconstruction.com

Website: <https://baltonconstruction.com/>

From: Brad Blankenbiller
Sent: Tuesday, May 31, 2022 1:47 PM
To: Steve Warnek; Jim A. Sarro, AIA LEED AP+
Subject: RE: RMCTC Welding

The drawings use ATAS Sterracore panels as a basis of design. Contractor must coordinate with the requirements and recommendations of the manufacturer's panel system being used.

Thanks,

Bradley S. Blankenbiller
Design Technician

MUHLENBERG GREENE ARCHITECTS, Ltd.

T 610 . 376 . 4927
W MG-Architects.com

955 BERKSHIRE BLVD . STE 101 . WYOMISSING



From: Steve Warnek <Steve@baltonconstruction.com>
Sent: Tuesday, May 31, 2022 9:59 AM
To: Jim A. Sarro, AIA LEED AP+ <JimS@MG-Architects.com>; Brad Blankenbiller <BradB@MG-Architects.com>
Subject: RE: RMCTC Welding

Here is one about the siding-

Metal Composite Panels. The drawings appear to show Laminators 1pc tight fit extrusions with back drained ventilated system (Laminators extruded aluminum sub girts). They also show an extruded insulation with plywood facer. Please clarify if Laminators CI insulation (2.1" Nailboard 5/8" FR plywood with 1.5" R-9 Insulation) is to be used behind the system or if the plywood and insulation is to be by others. If by others please clarify if Z-girts will be required (Along with spacing requirements) within the insulation assembly for attachment of plywood or if the plywood is to be fastened through the insulation into the wall assembly behind.

https://www.laminatorsinc.com/sites/default/files/pdf/laminators_back-drained_ventilated_ci_sell_sheet_-_end_users_-_0519.pdf

Thank you,
Steve Warnek
Project Manager/Estimator
484-336-4666

From: Steve Warnek
Sent: Tuesday, May 31, 2022 9:49 AM
To: Jim A. Sarro, AIA LEED AP+ <JimS@MG-Architects.com>; 'Brad Blankenbiller' <BradB@MG-Architects.com>
Subject: RMCTC Welding

Hi Jim and Brad,

Spec calls for Laminated glass under the insulated glass spec. but the description is for ¼", please clarify what is required.

Door 101C Calls for 3070door, SF-3 frame has door opening at 7'0" and overall frame height as 7'0". Please clarify.

Thank you,

Steve Warnek
Project Manager/Estimator



Balton Construction, Inc
25 East Main Street
PO Box 600
Richland, PA 17087

Phone: 484-336-4666

Fax: 888-753-6419

Email: steve@baltonconstruction.com

Website: <https://baltonconstruction.com/>

From: Brad Blankenbiller
Sent: Tuesday, May 31, 2022 1:48 PM
To: Grant Straiton
Cc: Jim A. Sarro, AIA LEED AP+
Subject: RE: Muhlenberg RFI

Hi Grant,

G.C. is responsible for signage.
A spec. section will be issued as part of an upcoming addendum.

Thanks,

Bradley S. Blankenbiller
Design Technician
MUHLENBERG GREENE ARCHITECTS, Ltd.

T 610 . 376 . 4927
W MG-Architects.com
955 BERKSHIRE BLVD . STE 101 . WYOMISSING



From: Grant Straiton <Grant@baltonconstruction.com>
Sent: Tuesday, May 31, 2022 12:26 PM
To: Brad Blankenbiller <BradB@MG-Architects.com>
Cc: Jim A. Sarro, AIA LEED AP+ <JimS@MG-Architects.com>
Subject: Muhlenberg RFI

Hi Brad,

I hope you enjoyed your holiday weekend. Is the GC responsible for "CS" signage on the Code & Life Safety plans? I don't see a spec section for it.

Thank you!
Grant Straiton
Estimator / Assistant Project Manager



Balton Construction, Inc
25 East Main Street, PO Box 600, Richland, PA 17087
Cell: 951-317-8261 **Fax:** 888-753-6419
grant@baltonconstruction.com www.BaltonConstruction.com

Send All Invoices to:
AccountsPayable@BaltonConstruction.com

From: Jim A. Sarro, AIA LEED AP+
Sent: Tuesday, May 31, 2022 3:04 PM
To: Steve Warnek; Brad Blankenbiller
Subject: RE: RMCTC Welding

Steve,

The GC is responsible to move all equipment as indicated on the documents. Prior to moving the equipment the school will need to be made aware of the need for the shipping brackets. This requirement will need to be coordinated at that time of the move.

James A. Sarro, AIA, LEED AP BD+C
Principal

[MUHLENBERG GREENE ARCHITECTS, Ltd.](#)

T 610 . 376 . 4927
C 610 . 310 . 6150
W [MG-Architects.com](#)

955 BERKSHIRE BLVD . STE 101 . WYOMISSING . PA . 19610-



From: Steve Warnek <Steve@baltonconstruction.com>
Sent: Tuesday, May 31, 2022 3:02 PM
To: Brad Blankenbiller <BradB@MG-Architects.com>; Jim A. Sarro, AIA LEED AP+ <JimS@MG-Architects.com>
Subject: RE: RMCTC Welding

So they are doing it?

Thank you,
Steve Warnek
Project Manager/Estimator
484-336-4666

From: Brad Blankenbiller <BradB@MG-Architects.com>
Sent: Tuesday, May 31, 2022 2:59 PM
To: Steve Warnek <Steve@baltonconstruction.com>; Jim A. Sarro, AIA LEED AP+ <JimS@MG-Architects.com>
Subject: RE: RMCTC Welding

This will need to be coordinated with the school during construction.

Bradley S. Blankenbiller
Design Technician
MUHLENBERG GREENE ARCHITECTS, Ltd.

T 610 . 376 . 4927
W [MG-Architects.com](#)
955 BERKSHIRE BLVD . STE 101 . WYOMISSING



From: Steve Warnek <Steve@baltonconstruction.com>
Sent: Tuesday, May 31, 2022 1:34 PM

To: Brad Blankenbiller <BradB@MG-Architects.com>; Jim A. Sarro, AIA LEED AP+ <JimS@MG-Architects.com>

Subject: RE: RMCTC Welding

Hi Brad and Jim,

Will the school be taking care of shutting down and putting the shipping brackets on the CNC and 3d equipment so we don't destroy them during transport?

Thank you,
Steve Warnek
Project Manager/Estimator
484-336-4666

From: Brad Blankenbiller <BradB@MG-Architects.com>

Sent: Tuesday, May 31, 2022 1:30 PM

To: Steve Warnek <Steve@baltonconstruction.com>; Jim A. Sarro, AIA LEED AP+ <JimS@MG-Architects.com>

Subject: RE: RMCTC Welding

Hi Steve,

¼" laminated non-insulated glass for interior storefronts. Insulated glass for all exterior storefronts and exterior windows.

SF-3 opening to be 7'-4" overall frame height with 7'-0" door.

Thanks,

Bradley S. Blankenbiller

Design Technician

MUHLENBERG GREENE ARCHITECTS, Ltd.

T 610 . 376 . 4927

W MG-Architects.com

955 BERKSHIRE BLVD . STE 101 . WYOMISSING



From: Steve Warnek <Steve@baltonconstruction.com>

Sent: Tuesday, May 31, 2022 9:49 AM

To: Jim A. Sarro, AIA LEED AP+ <JimS@MG-Architects.com>; Brad Blankenbiller <BradB@MG-Architects.com>

Subject: RMCTC Welding

Hi Jim and Brad,

Spec calls for Laminated glass under the insulated glass spec. but the description is for ¼", please clarify what is required.

Door 101C Calls for 3070door, SF-3 frame has door opening at 7'0" and overall frame height as 7'0". Please clarify.

Thank you,

Steve Warnek
Project Manager/Estimator



Balton Construction, Inc
25 East Main Street
PO Box 600
Richland, PA 17087

Phone: 484-336-4666

Fax: 888-753-6419

Email: steve@baltonconstruction.com

Website: <https://baltonconstruction.com/>

From: Brad Blankenbiller
Sent: Wednesday, June 1, 2022 8:32 AM
To: Steve Warnek; Jim A. Sarro, AIA LEED AP+
Subject: RE: RMCTC Welding

At the trenches, refer to the trench details on the Architectural drawings and coordinate with the civil drawings. Where new paving meets existing, refer to the paving details on the civil drawings.

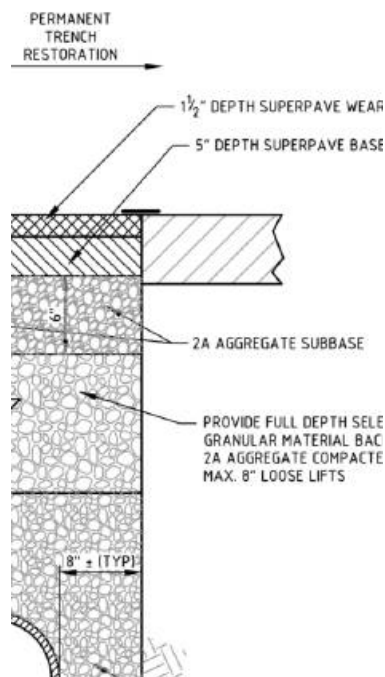
Thanks,

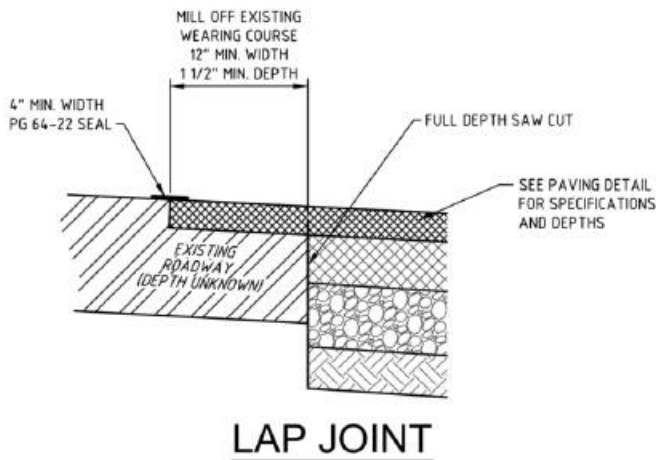
Bradley S. Blankenbiller
Design Technician
MUHLENBERG GREENE ARCHITECTS, Ltd.

T 610 . 376 . 4927
W MG-Architects.com
955 BERKSHIRE BLVD . STE 101 . WYOMISSING

From: Steve Warnek <Steve@baltonconstruction.com>
Sent: Tuesday, May 31, 2022 3:41 PM
To: Brad Blankenbiller <BradB@MG-Architects.com>; Jim A. Sarro, AIA LEED AP+ <JimS@MG-Architects.com>
Subject: RE: RMCTC Welding

This was more the question- 2 details below. Are you stating that at the trenches, it is the first section (no milling) but at where the existing paving is meeting new paving at the building- you do want it milled(lap joint detail)?





Thank you,
 Steve Warnek
 Project Manager/Estimator
 484-336-4666

From: Brad Blankenbiller <BradB@MG-Architects.com>
Sent: Tuesday, May 31, 2022 3:21 PM
To: Steve Warnek <Steve@baltonconstruction.com>; Jim A. Sarro, AIA LEED AP+ <JimS@MG-Architects.com>
Subject: RE: RMCTC Welding

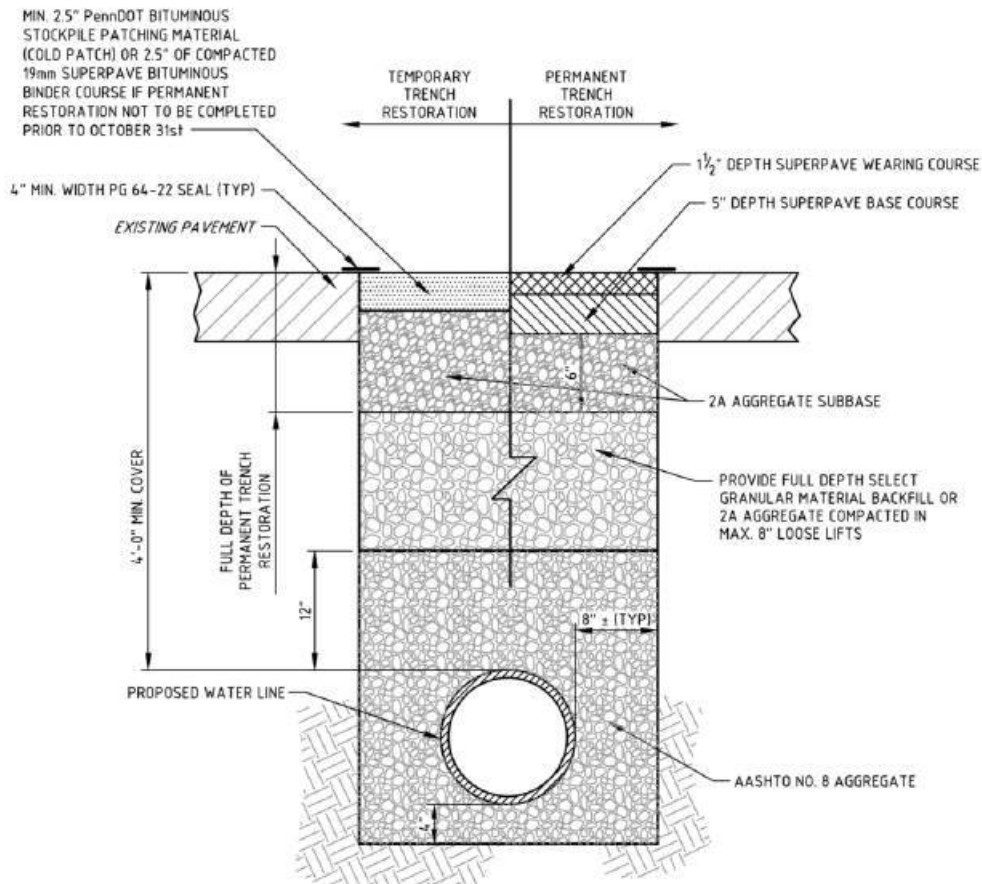
The left side of the detail is for **temporary** trench restoration if permanent restoration will not be completed prior to October 31st as indicated in the note on the drawing. The right side of the detail is for final permanent restoration of the trench which is required.

Bradley S. Blankenbiller
 Design Technician
 MUHLENBERG GREENE ARCHITECTS, Ltd.

T 610 . 376 . 4927
 W MG-Architects.com
 955 BERKSHIRE BLVD . STE 101 . WYOMISSING

From: Steve Warnek <Steve@baltonconstruction.com>
Sent: Tuesday, May 31, 2022 3:01 PM
To: Brad Blankenbiller <BradB@MG-Architects.com>; Jim A. Sarro, AIA LEED AP+ <JimS@MG-Architects.com>
Subject: RE: RMCTC Welding

This is the detail in question-



Thank you,
Steve Warnek
Project Manager/Estimator
484-336-4666

From: Brad Blankenbiller <BradB@MG-Architects.com>

Sent: Tuesday, May 31, 2022 2:57 PM

To: Steve Warnek <Steve@baltonconstruction.com>; Jim A. Sarro, AIA LEED AP+ <JimS@MG-Architects.com>

Subject: RE: RMCTC Welding

The lap joint detail shows how the new paving area meets existing paving. The paving cross-section is a typical detail for new paving areas.

Bradley S. Blankenbiller

Design Technician

MUHLBERG GREENE ARCHITECTS, Ltd.

T 610 . 376 . 4927

W MG-Architects.com

955 BERKSHIRE BLVD . STE 101 . WYOMISSING



From: Steve Warnek <Steve@baltonconstruction.com>

Sent: Tuesday, May 31, 2022 2:16 PM

To: Brad Blankenbiller <BradB@MG-Architects.com>; Jim A. Sarro, AIA LEED AP+ <JimS@MG-Architects.com>

Subject: RE: RMCTC Welding

Hi Brad and Jim,

On Sheet C6.1, there are 2 details for pavement joints, one has milling and one has a straight cut. There is quite a large difference in the price for these details and a lot of linear footage on this project. Which one is required?

Thank you,
Steve Warnek
Project Manager/Estimator
484-336-4666

From: Brad Blankenbiller <BradB@MG-Architects.com>

Sent: Tuesday, May 31, 2022 1:47 PM

To: Steve Warnek <Steve@baltonconstruction.com>; Jim A. Sarro, AIA LEED AP+ <JimS@MG-Architects.com>

Subject: RE: RMCTC Welding

The drawings use ATAS Sterracore panels as a basis of design. Contractor must coordinate with the requirements and recommendations of the manufacturer's panel system being used.

Thanks,

Bradley S. Blankenbiller

Design Technician

MUHLENBERG GREENE ARCHITECTS, Ltd.

T 610 . 376 . 4927

W MG-Architects.com

955 BERKSHIRE BLVD . STE 101 . WYOMISSING



From: Steve Warnek <Steve@baltonconstruction.com>

Sent: Tuesday, May 31, 2022 9:59 AM

To: Jim A. Sarro, AIA LEED AP+ <JimS@MG-Architects.com>; Brad Blankenbiller <BradB@MG-Architects.com>

Subject: RE: RMCTC Welding

Here is one about the siding-

Metal Composite Panels. The drawings appear to show Laminators 1pc tight fit extrusions with back drained ventilated system (Laminators extruded aluminum sub girts). They also show an extruded insulation with plywood facer. Please clarify if Laminators CI insulation (2.1" Nailboard 5/8" FR plywood with 1.5" R-9 Insulation) is to be used behind the system or if the plywood and insulation is to be by others. If by others please clarify if Z-girts will be required(Along with spacing requirements) within the

insulation assembly for attachment of plywood or if the plywood is to be fastened through the insulation into the wall assembly behind.

https://www.laminatorsinc.com/sites/default/files/pdf/laminators_back-drained_ventilated_ci_sell_sheet_-_end_users_-_0519.pdf

Thank you,
Steve Warnek
Project Manager/Estimator
484-336-4666

From: Steve Warnek
Sent: Tuesday, May 31, 2022 9:49 AM
To: Jim A. Sarro, AIA LEED AP+ <JimS@MG-Architects.com>; 'Brad Blankenbiller' <BradB@MG-Architects.com>
Subject: RMCTC Welding

Hi Jim and Brad,

Spec calls for Laminated glass under the insulated glass spec. but the description is for ¼", please clarify what is required.

Door 101C Calls for 3070door, SF-3 frame has door opening at 7'0" and overall frame height as 7'0". Please clarify.

Thank you,

Steve Warnek
Project Manager/Estimator



Balton Construction, Inc
25 East Main Street
PO Box 600
Richland, PA 17087

Phone: 484-336-4666
Fax: 888-753-6419

Email: steve@baltonconstruction.com
Website: <https://baltonconstruction.com/>

From: Brad Blankenbiller
Sent: Friday, May 27, 2022 1:15 PM
To: 'Steve Sostak'; Jim A. Sarro, AIA LEED AP+
Cc: Lauren VanSteenvoort
Subject: RE: Reading Muhlenberg CTC RFI

Hi Steve,

See below for response in **green**:

1. Are we pricing thermal or nonthermal doors? **Main entrance storefront to be thermal door that is compatible with storefront system. Interior storefront doors to be non-thermal.**
2. Do they really want thermal doors used for the interior elevations? Thermal doors are about twice the cost. **Interior storefront doors to be non-thermal.**
3. Are we to price thermal frames and 1" IGU for the interior elevations as specified or can we use nonthermal and ¼" glass for the interior? **Interior storefronts use non-thermal with ¼" glazing. Exterior/entrance storefront to be thermal frames and insulated glazing.**

Thank you,

Bradley S. Blankenbiller

Design Technician

MUHLENBERG GREENE ARCHITECTS, Ltd.

T 610 . 376 . 4927
W MG-Architects.com

955 BERKSHIRE BLVD . STE 101 . WYOMISSING



From: Steve Sostak <ssostak@erscon.com>

Sent: Friday, May 27, 2022 8:07 AM

To: Jim A. Sarro, AIA LEED AP+ <JimS@MG-Architects.com>

Cc: Brad Blankenbiller <BradB@MG-Architects.com>; Lauren VanSteenvoort <LaurenV@MG-Architects.com>

Subject: FW: Reading Muhlenberg CTC RFI

Storefront door specs are confusing.

- B. Entrance Doors: Manufacturer's standard glazed entrance doors for manual-swing or automatic operation.
1. Door Construction: **1-3/4-inch (44.5-mm) overall thickness, with minimum 0.125-inch (3.2-mm-) thick, extruded-aluminum tubular rail and stile members. Mechanically fasten corners with reinforcing brackets that are deeply penetrated and fillet welded or that incorporate concealed tie rods.**
 - a. Thermal Construction: **High-performance plastic connectors separate aluminum members exposed to the exterior from members exposed to the interior.**

1 ¾" doors are standard nonthermal as described in B 1. Thermal doors are 2 ¼" thick and are constructed as described in B 1 a.

1. Are we pricing thermal or nonthermal doors?

2. Do they really want thermal doors used for the interior elevations? Thermal doors are about twice the cost.
3. Are we to price thermal frames and 1" IGU for the interior elevations as specified or can we use nonthermal and ¼" glass for the interior?

Stephen Sostak

VP Estimating



General Contractors

227 Blair Ave

Reading, PA 19601

(610)-376-6634 Direct

(610)-376-6625 ext 104

(610)-587-5783 Cell

(610)-376-6954 Fax

ssostak@erscon.com