

OVERALL FLOOR PLAN
SCALE: 3/32" = 1'-0"

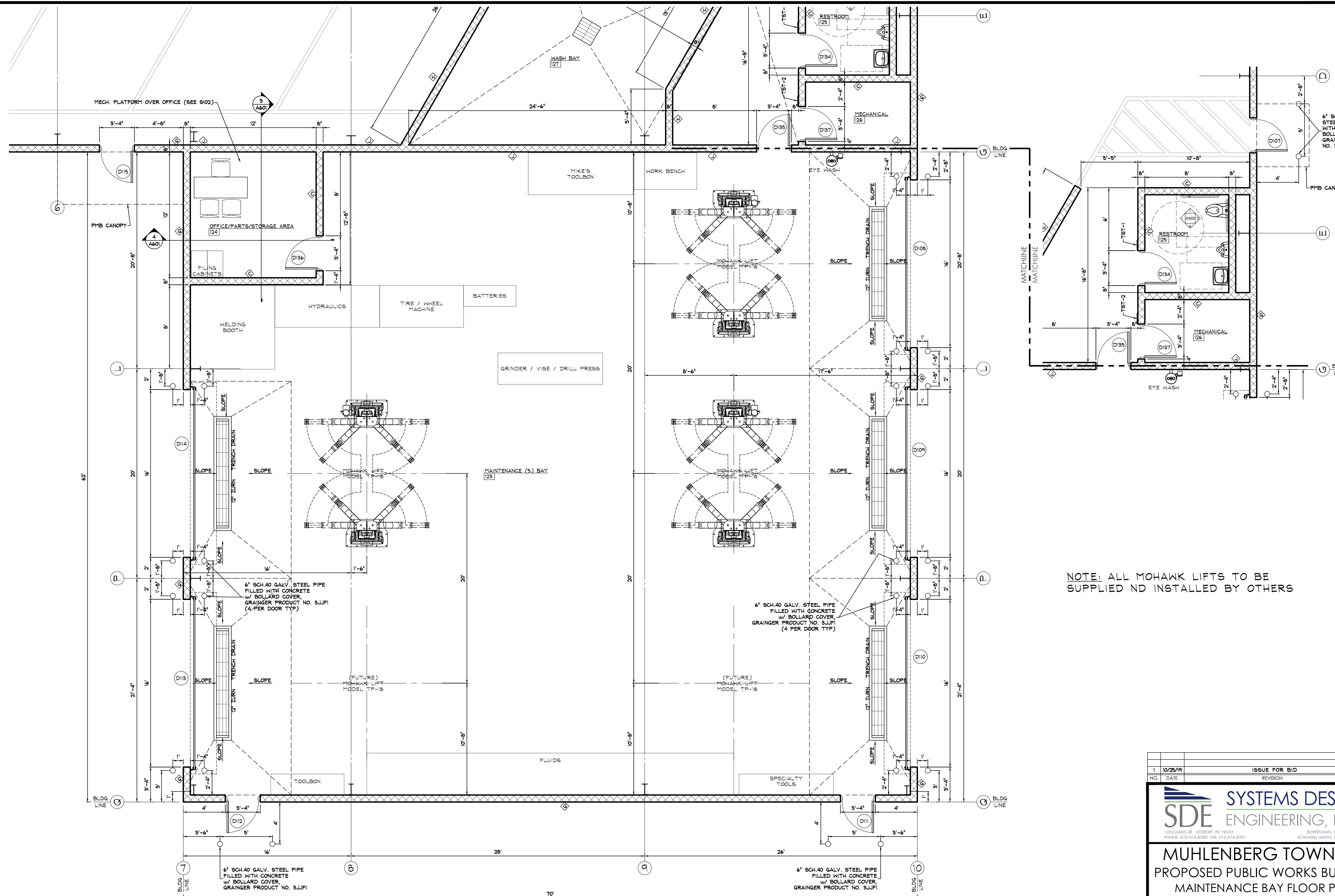
© COPYRIGHT 2019 - Systems Design Engineering, Inc. - V:\Projects\Muhlenberg\19-0153-0144-Overall Floor Plan.dwg - October 24, 2019 1:31:11 pm by janes

1	10/25/19	ISSUE FOR BID	JWS
NO.	DATE	REVISION	BY

SYSTEMS DESIGN ENGINEERING, INC
 1032 JAMES DR. LEESPORT, PA 19533
 PHONE: 610.916.8500 FAX: 610.916.8501
 3015 TOWNSHIP, PA 010 369 1310
 SCHUYLKILL HAVEN, PA 570.385.5549

**MUHLENBERG TOWNSHIP
 PROPOSED PUBLIC WORKS BUILDING
 OVERALL FLOOR PLAN**

DRAWN BY		CHECKED		APPROVED		CADD FILE NAME	
JWS		TSU		TSU		A101 Overall floor plan.dwg	
DATE		SCALE		DRAWING NUMBER			
08/23/19		3/32" = 1'-0"		D-19-0153-0144-A101			



NOTE: ALL MOHAWK LIFTS TO BE SUPPLIED AND INSTALLED BY OTHERS

MAINTENANCE BAY FLOOR PLAN
SCALE: 1/4" = 1'-0"

NO.	DATE	REVISION	BY
1	10/25/19	ISSUE FOR BID	JWS

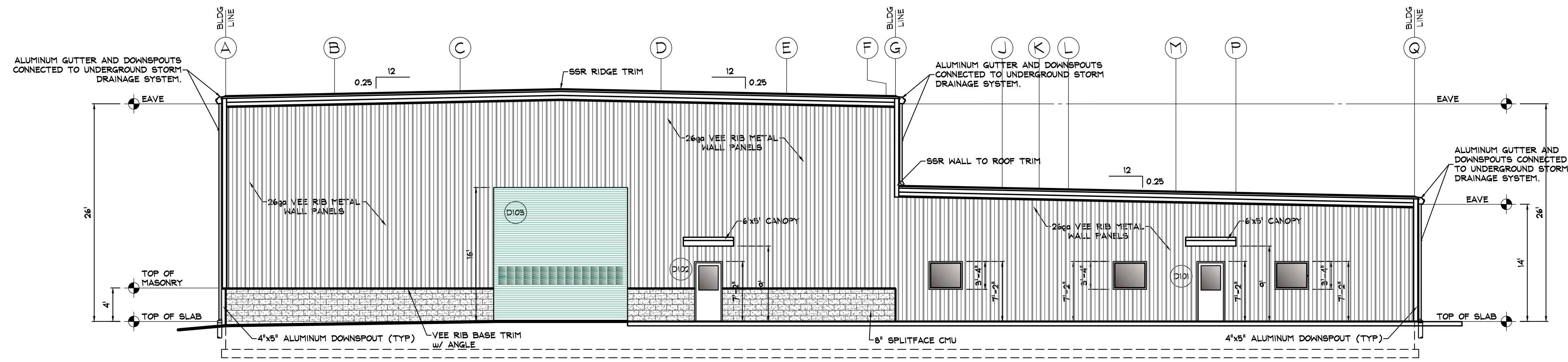
SYSTEMS DESIGN ENGINEERING, INC
 1032 JAMES DR. HESPORT, PA 19533
 PHONE: 610.916.8500 FAX: 610.916.8501
 BOYSTOWN, PA 610.369.1319
 SCHUYLKILL HAVEN, PA 570.385.5549

MUHLENBERG TOWNSHIP PROPOSED PUBLIC WORKS BUILDING MAINTENANCE BAY FLOOR PLAN

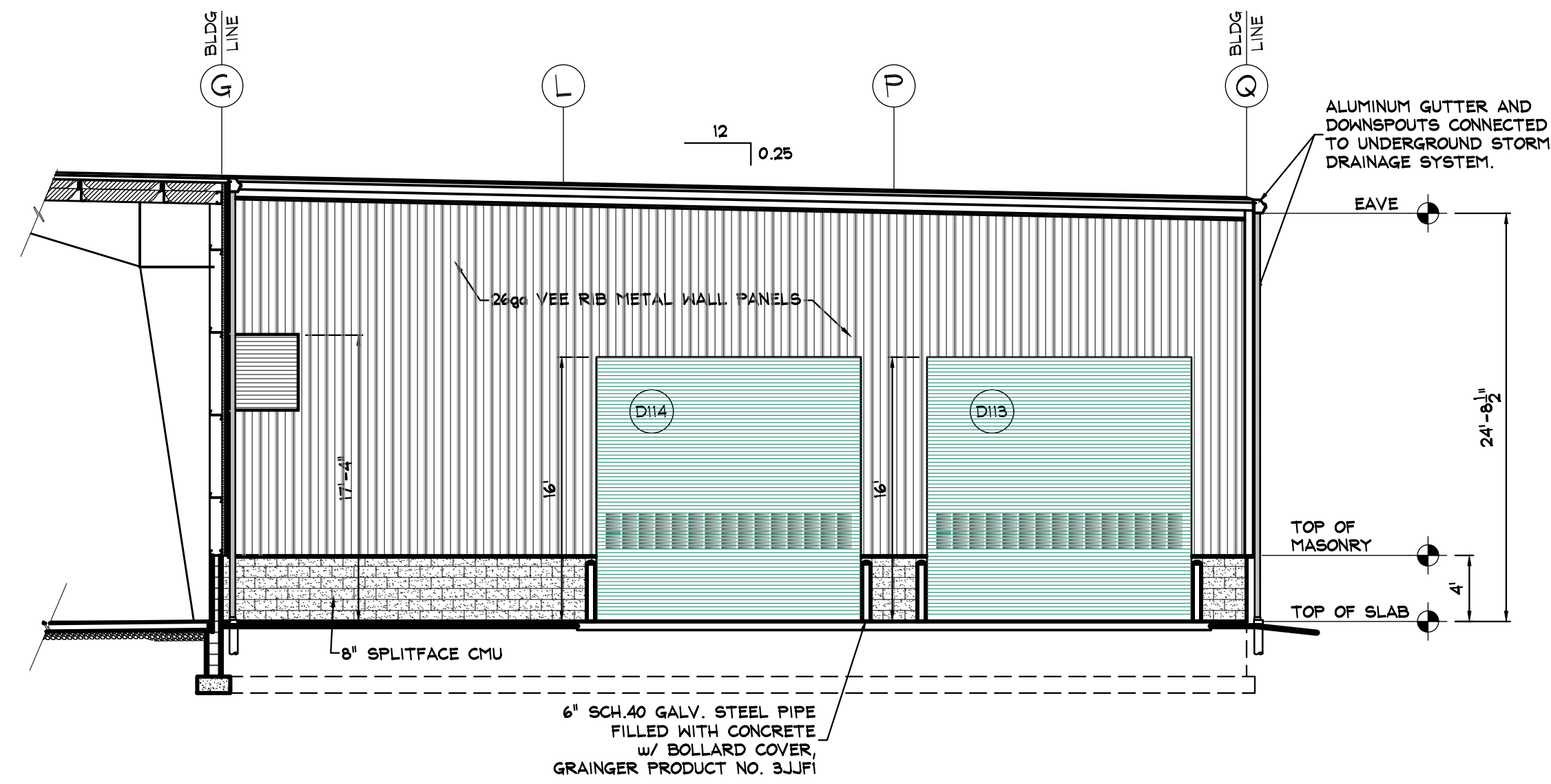
DRAWN BY		CHECKED		APPROVED		CADD FILE NAME	
JWS		TSU		TSU		A202 MaintBay floor plan.dwg	
DATE		SCALE		DRAWING NUMBER			
08/23/19		1/4" = 1'-0"		D-19-0153-0144-A202			

SITUATE IN BERKS COUNTY PENNSYLVANIA

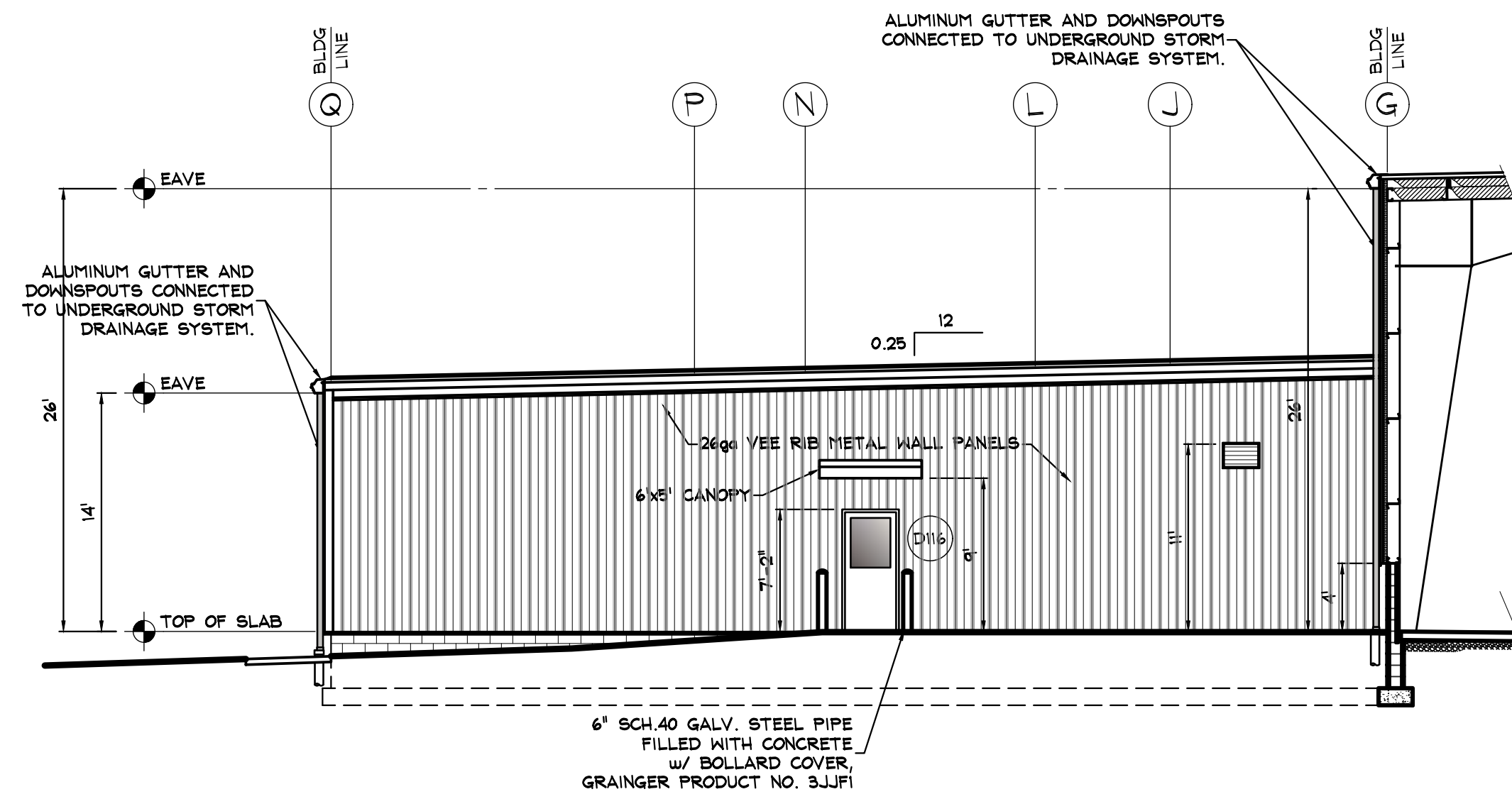
© COPYRIGHT 2019 - Systems Design Engineering, Inc. - Project: Muhlenberg Twp 19-0153-0144 - Maint Bay Floor plan.dwg - October 24, 2019 3:22 pm by James



BUILDING ELEVATION 1
SCALE: 1/8" = 1'-0"



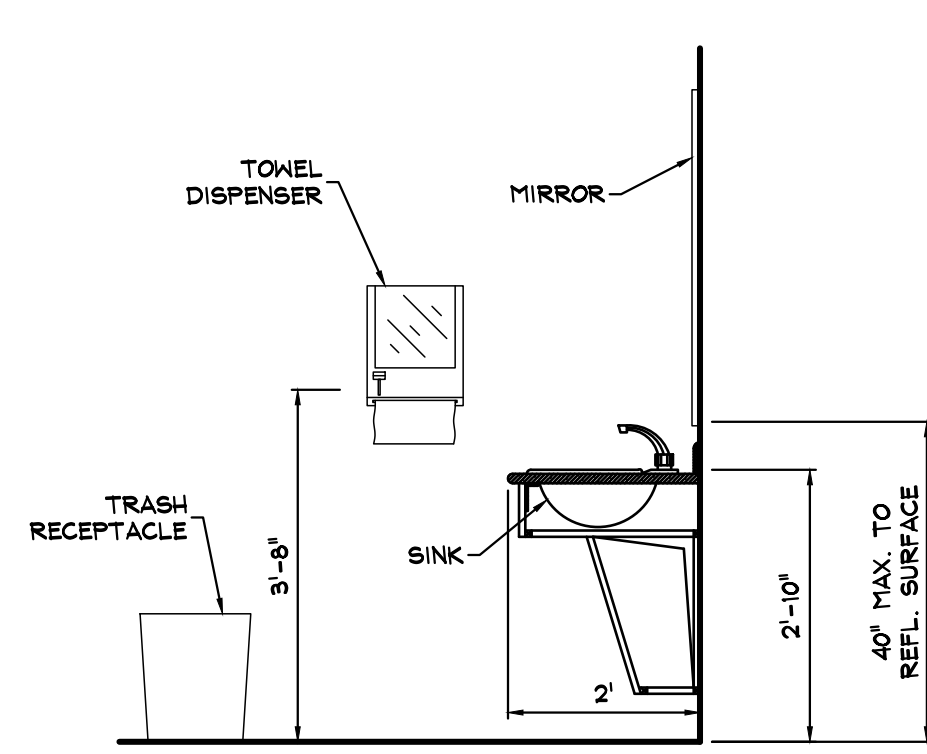
BUILDING ELEVATION 2
SCALE: 1/8" = 1'-0"



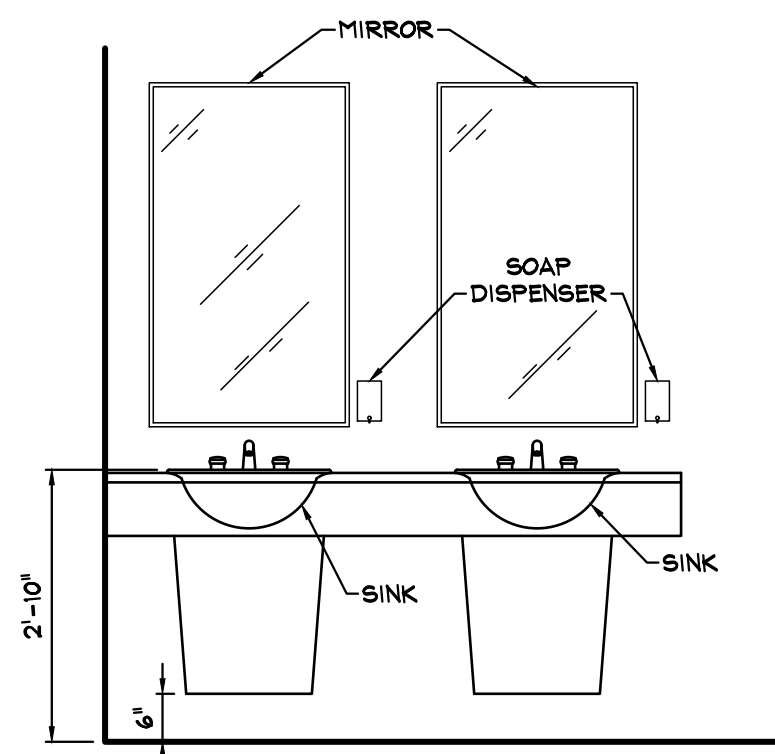
BUILDING ELEVATION 3
SCALE: 1/8" = 1'-0"

NOTE: SEE PRE-ENGINEERED BUILDING PLANS FOR ADDITIONAL DETAILS.

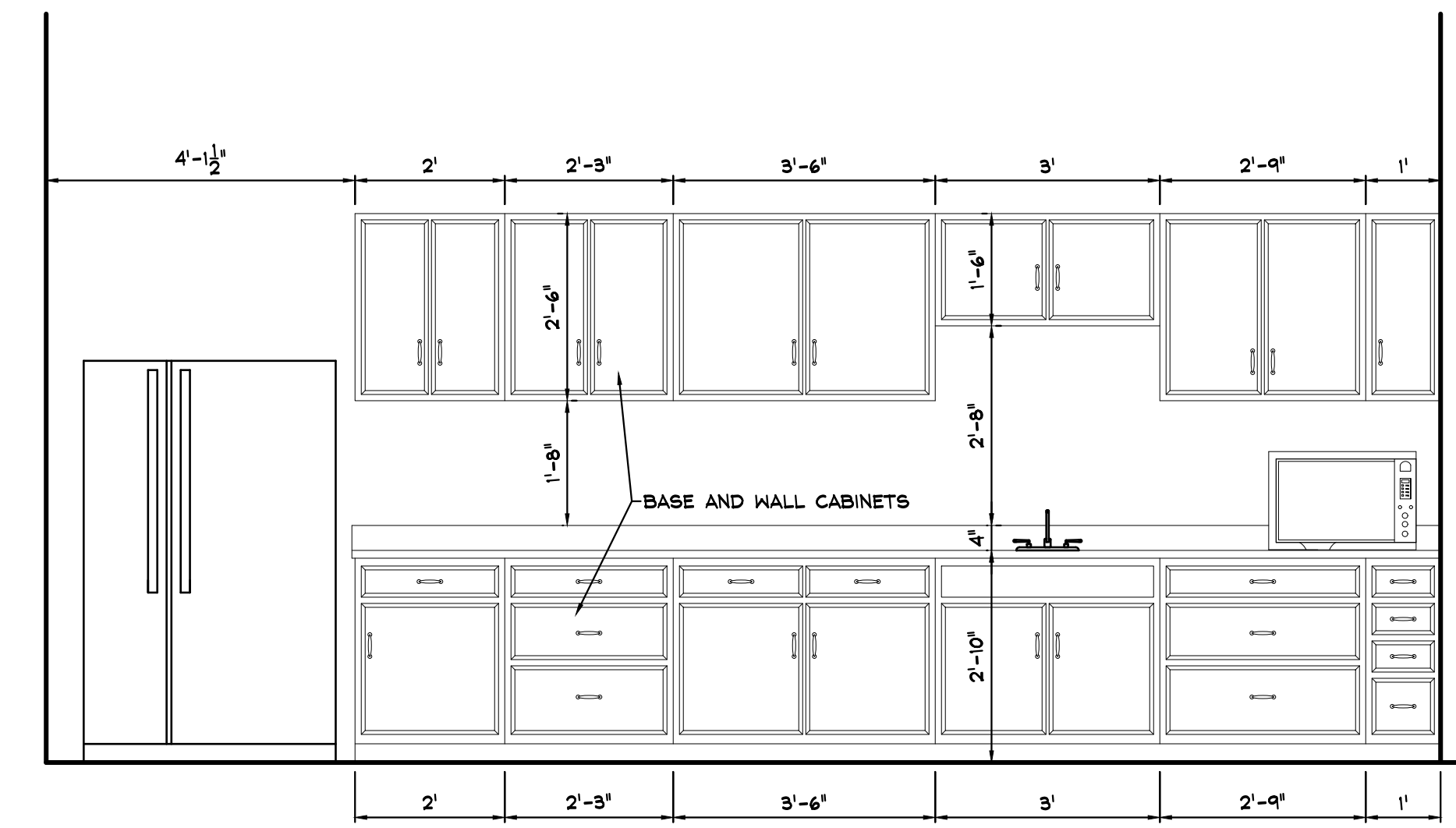
NO.	DATE	REVISION	BY
1	10/25/19	ISSUE FOR BID	JWS
MUHLENBERG TOWNSHIP PROPOSED PUBLIC WORKS BUILDING EXTERIOR BUILDING ELEVATIONS			
MUHLENBERG TOWNSHIP BERKS COUNTY PENNSYLVANIA		SITUATE IN BERKS COUNTY PENNSYLVANIA	
DRAWN BY JWS	CHECKED TSU	APPROVED TSU	CADD FILE NAME A302 Exterior Elevations.dwg
DATE 08/23/19	SCALE 1/8" = 1'-0"	DRAWING NUMBER D-19-0153-0144-A302	



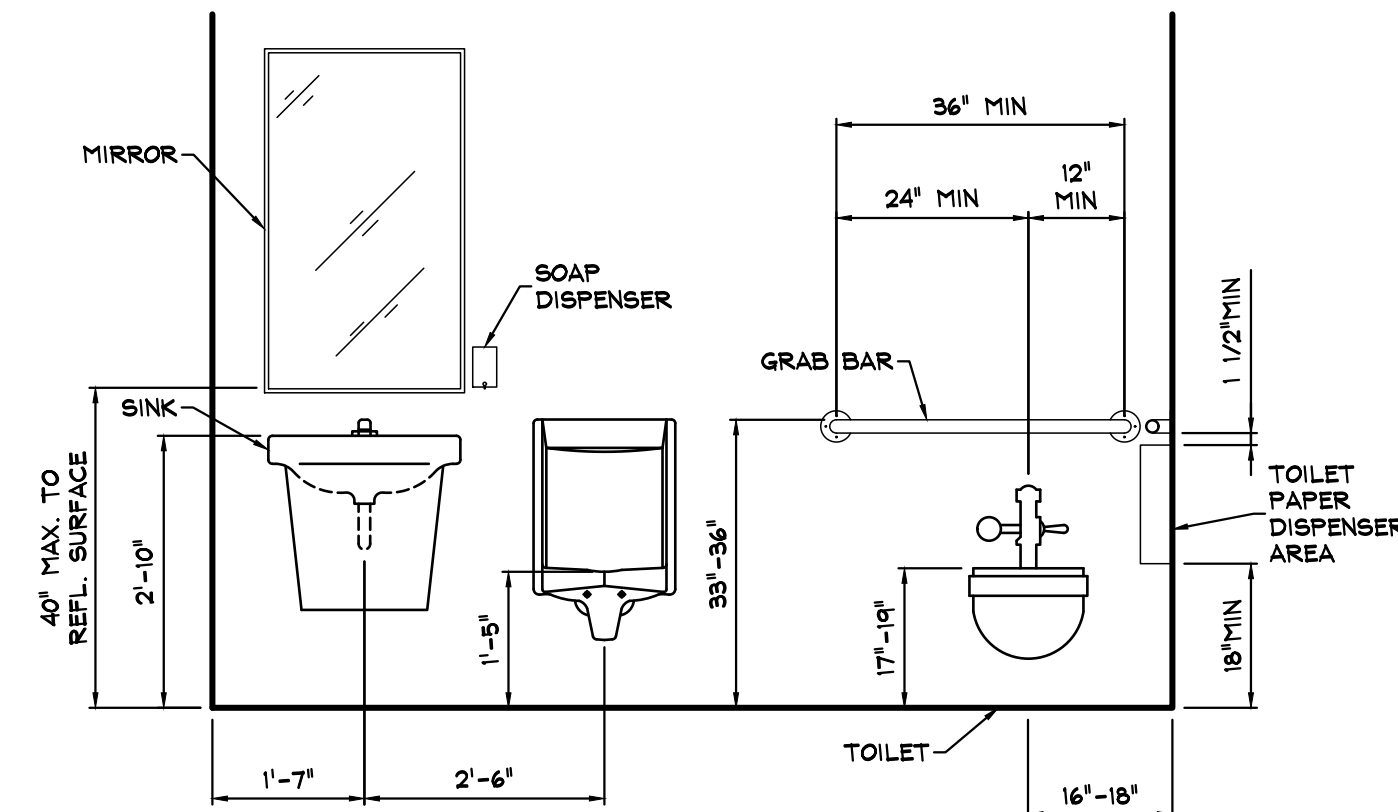
INTERIOR ELEVATION 1
SCALE: 1/2" = 1'-0" A303



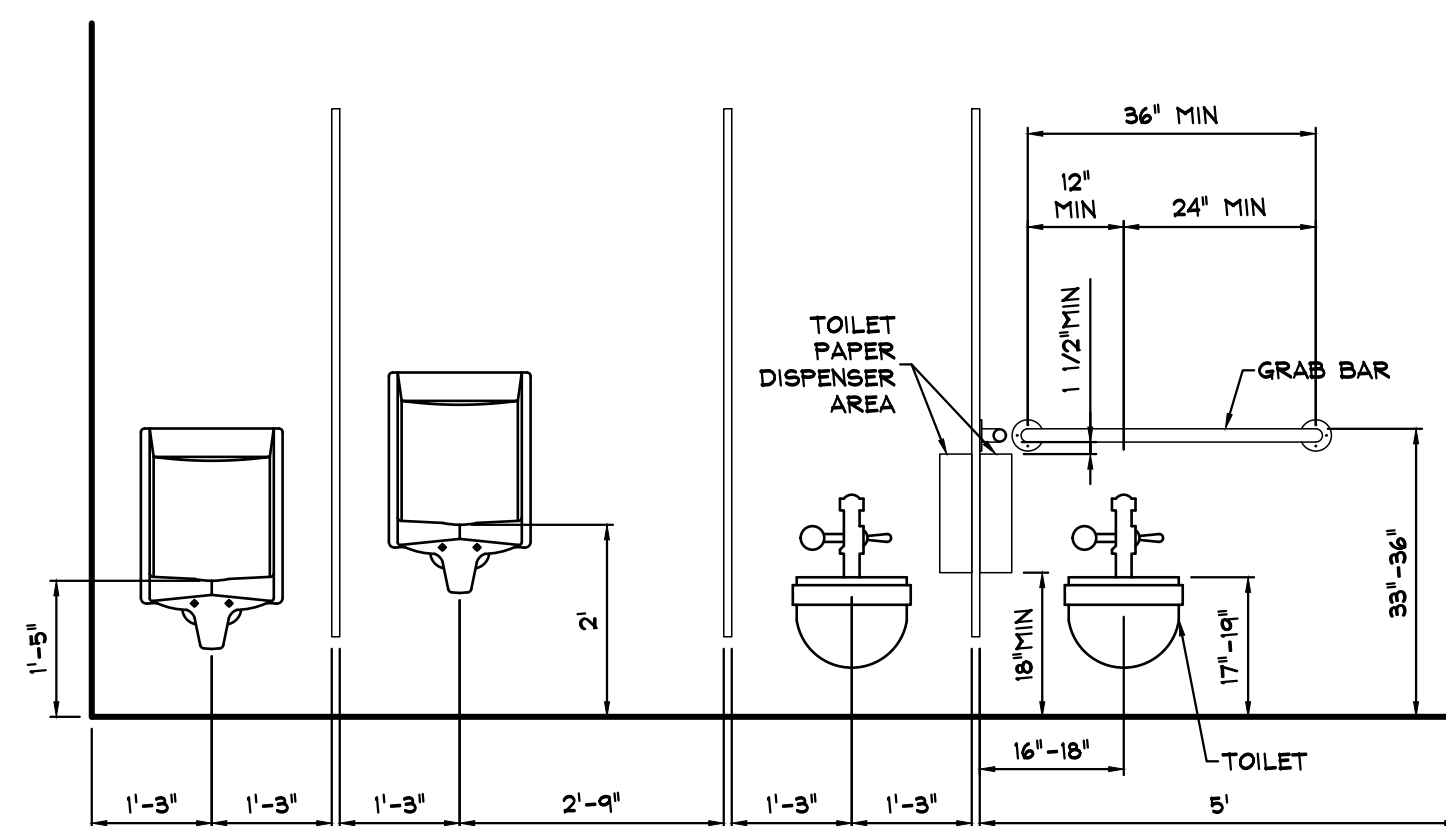
INTERIOR ELEVATION 2
SCALE: 1/2" = 1'-0" A303



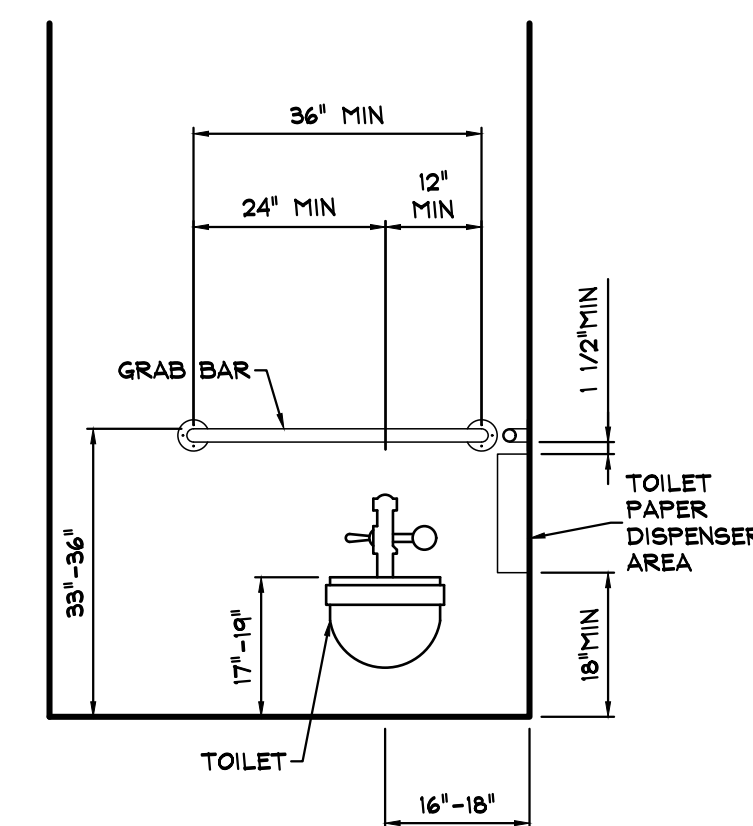
INTERIOR ELEVATION 9
SCALE: 1/2" = 1'-0" A303



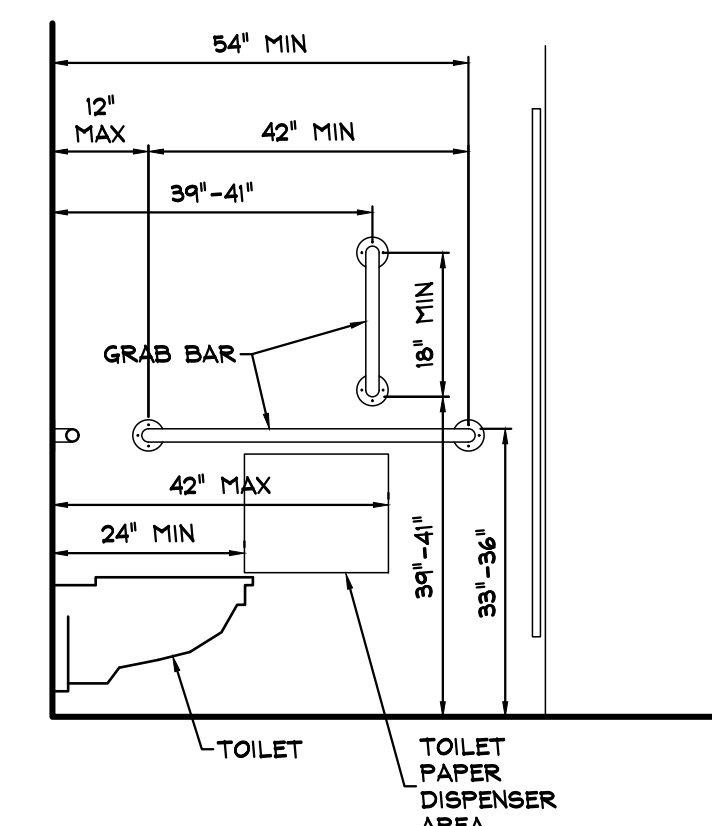
INTERIOR ELEVATION 3
SCALE: 1/2" = 1'-0" A303



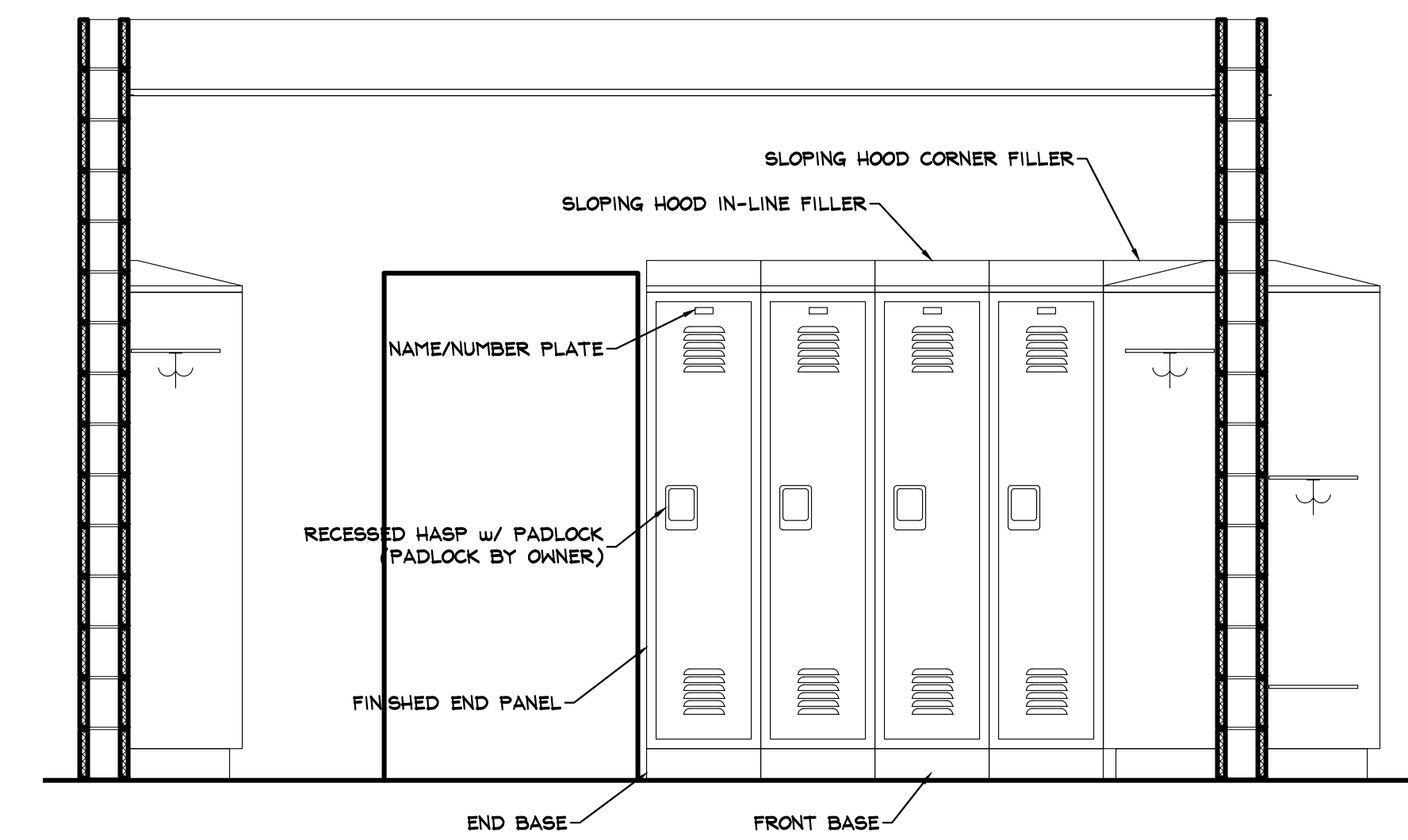
INTERIOR ELEVATION 4
SCALE: 1/2" = 1'-0" A303



INTERIOR ELEVATION 5
SCALE: 1/2" = 1'-0" A303

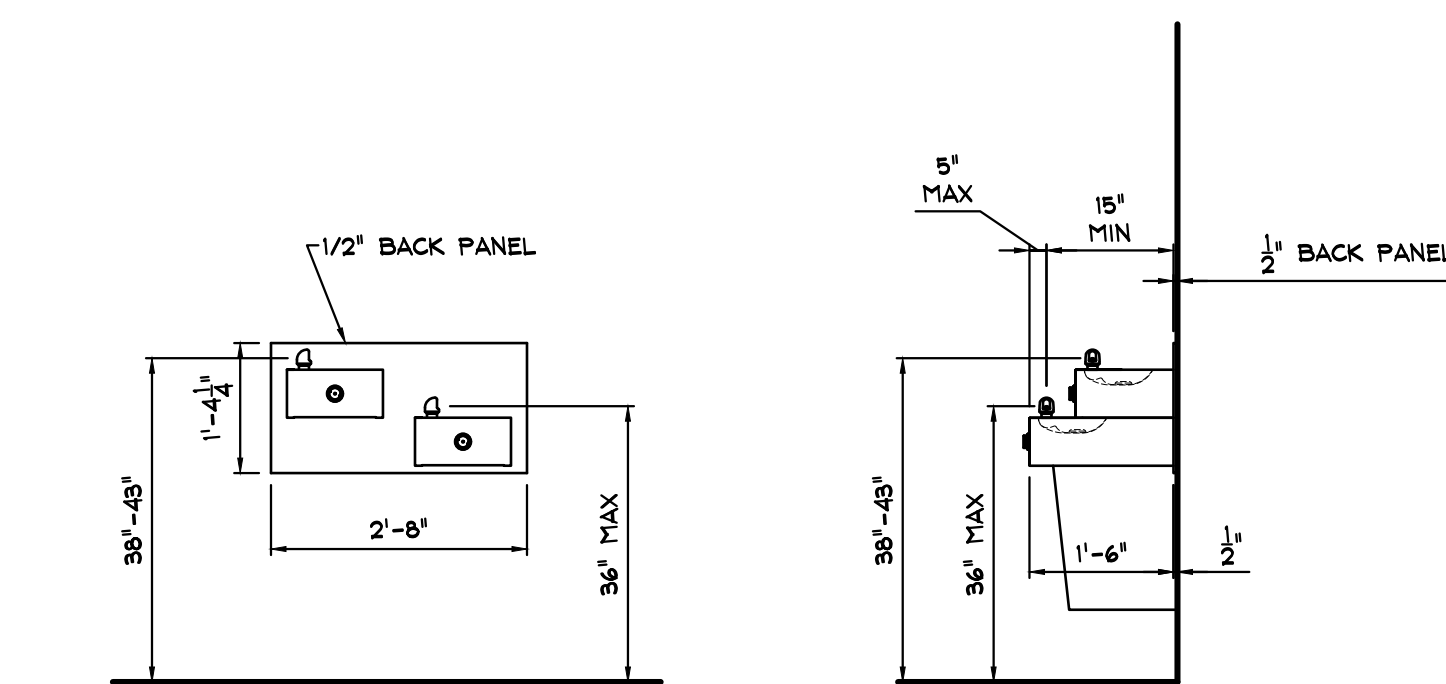


INTERIOR ELEVATION 6
SCALE: 1/2" = 1'-0" A303



INTERIOR ELEVATION 10
SCALE: 1/2" = 1'-0" A303

LOCKER ACCESSORIES, HAT SHELF, COAT ROD, SIDE AND BACK HOOKS. MODIFY HANDICAP LOCKERS TO COMPLY WITH ADA REGULATIONS.



INTERIOR ELEVATION 7
SCALE: 1/2" = 1'-0" A303

INTERIOR ELEVATION 8
SCALE: 1/2" = 1'-0" A303

CONTRACTOR NOTE:
CONTRACTOR IS RESPONSIBLE TO VERIFY ALL DIMENSIONS AND LOCATIONS OF RESTROOM FIXTURES AND ACCESSORIES WITH THE APPLICABLE CODES.

NO.	DATE	REVISION	BY
1	10/25/19	ISSUE FOR BID	JWS

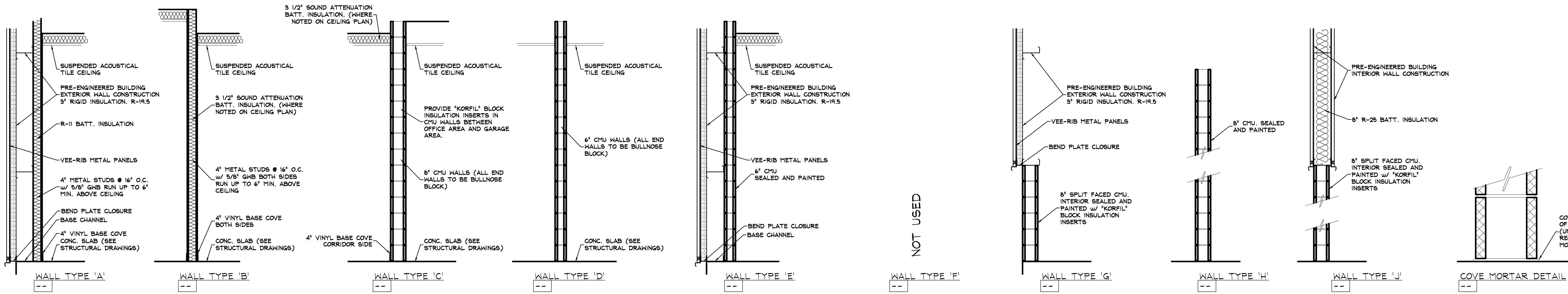
SYSTEMS DESIGN ENGINEERING, INC
 1032 JAMES DR. LEESPORT, PA 17533
 PHONE: 610.916.8500 FAX: 610.916.8501
 BOYKISTOWN, PA 010.369.1310
 SCHUYLKILL HAVEN, PA 570.385.5549

**MUHLENBERG TOWNSHIP
PROPOSED PUBLIC WORKS BUILDING
INTERIOR ELEVATIONS**

MULHENBERG TOWNSHIP		SITUATE IN BERKS COUNTY		PENNSYLVANIA	
DRAWN BY	CHECKED	APPROVED	CADD FILE NAME		
JWS	TSU	TSU	A303 Interior Elevations.dwg		
DATE	SCALE	DRAWING NUMBER			
08/23/19	AS NOTED	D-19-0153-0144-A303			

RESTROOM ACCESSORIES

- GRAB BARS - AMERICAN SPECIALTIES 3800 SERIES OR APPROVED EQUAL.
- TOILET PAPER DISPENSER - AMERICAN SPECIALTIES 9030 OR APPROVED EQUAL.
- PAPER TOWEL DISPENSER - AMERICAN SPECIALTIES 0210 OR APPROVED EQUAL.
- SOAP DISPENSER - AMERICAN SPECIALTIES 0247 OR APPROVED EQUAL.
- MIRROR - AMERICAN SPECIALTIES 0600 SERIES OR APPROVED EQUAL.
- TRASH RECEPTACLE - AMERICAN SPECIALTIES 0458-9 OR APPROVED EQUAL.



FINISH SCHEDULE

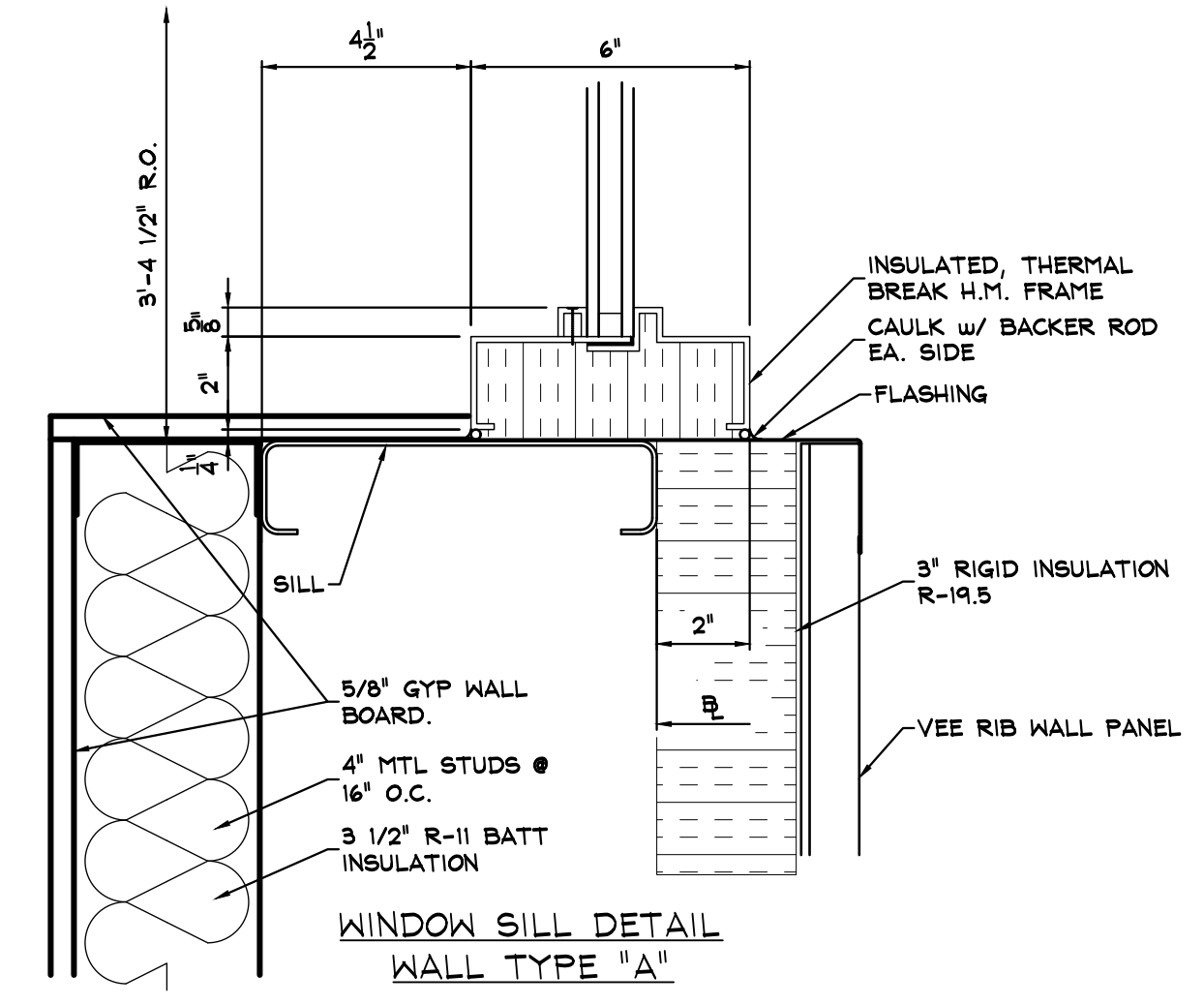
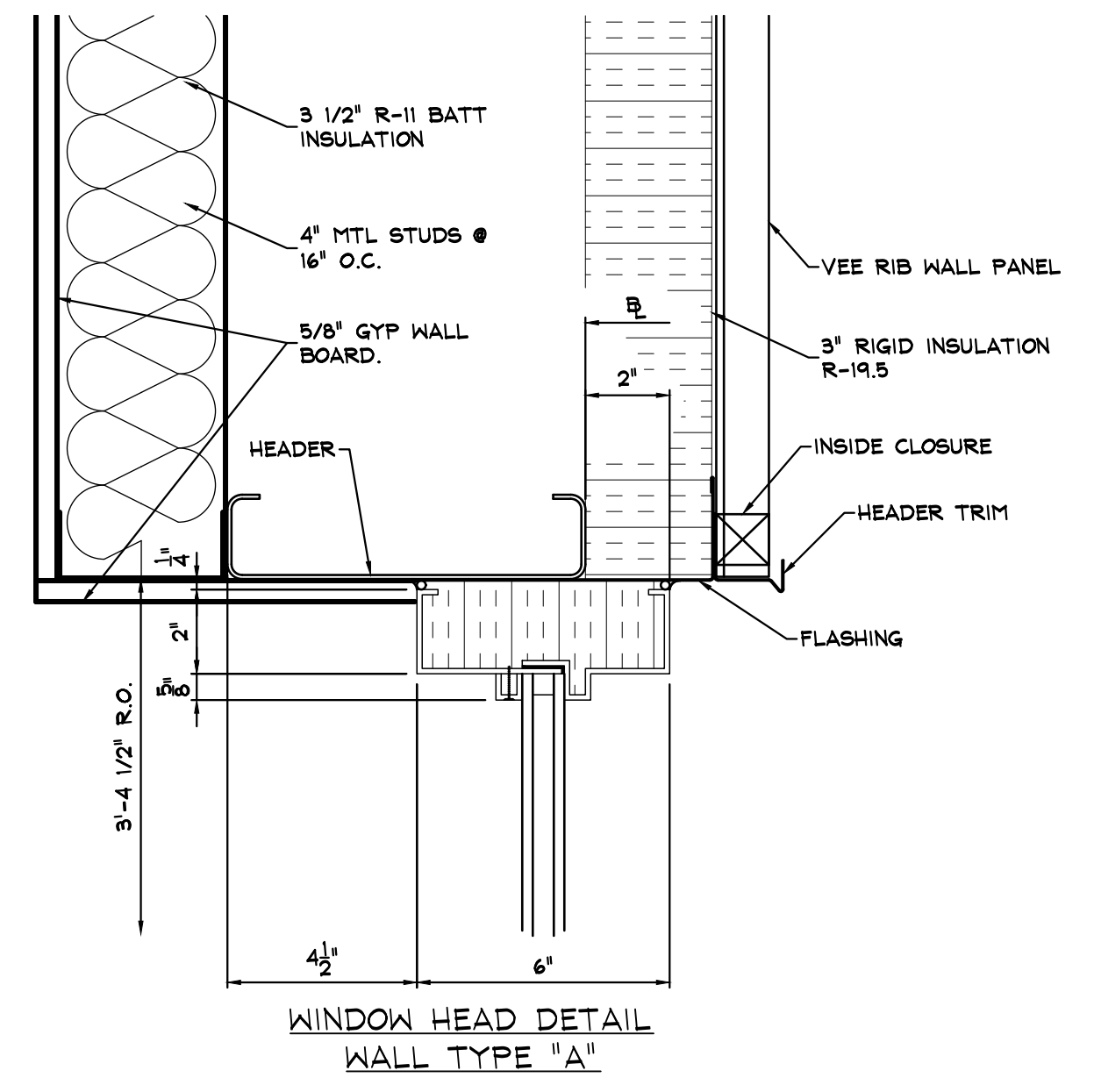
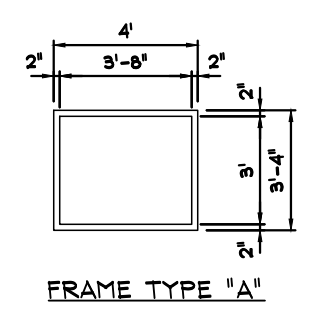
ROOM #	ROOM	FLOOR	BASE	WALLS	CEILING	REMARKS
				TYPE	HEIGHT	
101	CORRIDOR	C-1	V-1	P-1	CS-1	9'-0"
102	CORRIDOR	C-1	V-1	P-1	CS-1	9'-0"
103	CORRIDOR	C-1	V-1	P-1	CS-1	9'-0"
104	CORRIDOR	C-1	V-1	P-1	CS-1	9'-0"
105	GOATS / DRINKING FOUNTAINS	C-1	V-1	P-1	CS-1	10'-0"
106	DIRECTOR'S OFFICE	C-1	V-1	P-1	CS-2	9'-0"
107	CONFERENCE ROOM / OFFICE	C-1	V-1	P-1	CS-2	9'-0"
108	UNALLOCATED SPACE	C-1	V-1	P-1	CS-2	9'-0"
109	BREAK / TRAINING ROOM	C-1	V-1	P-1	CS-3	10'-0"
110	CLOSET	C-1	V-1	P-1	CS-1	9'-0"
111	FORMAN'S OFFICE	C-1	V-1	P-1	CS-1	9'-0"
112	JANITOR'S CLOSET	C-1	V-1	P-1	CS-1	9'-0"
113	STORAGE	C-1	V-1	P-1	CS-1	9'-0"
114	FUTURE OFFICE / BUNK ROOM	C-1	V-1	P-1	CS-1	9'-0"
115	COMPUTER / ELECTRICAL	C-1	V-1	P-1	--	OPEN
116	LAUNDRY	C-1	V-1	P-1	CS-1	9'-0"
117	WOMAN'S RESTROOM / LOCKERS / SHOWER	C-1	--	P-1	CS-4	9'-0"
118	MEN'S RESTROOM	C-1	--	P-1	CS-4	9'-0"
119	MEN'S LOCKERS / SHOWERS	C-1	--	P-1	CS-4	9'-0"
120	STORAGE	C-1	--	P-1	--	OPEN
121	MECHANICAL	C-1	--	P-1	--	OPEN
122	GARAGE	C-1	--	P-1	--	OPEN
123	MAINTENANCE BAYS	C-1	--	P-1	--	OPEN
124	OFFICE / PARTS / STORAGE	C-2	--	P-1	--	9'-0"
125	RESTROOM	C-2	--	P-1	CS-4	9'-0"
126	MECHANICAL	C-2	--	P-1	--	OPEN
127	WASH BAY	C-1	--	P-1	--	OPEN

FINISH TYPES:
FLOOR:
 C-1 FINISHED CONCRETE - STEEL TROWELED - REFER SPEC SECTION 046723.
 C-2 FINISHED CONCRETE - STEEL TROWELED - REFER SPEC SECTION 046723
 ** ALL CONCRETE FINISHES SHALL BE INSTALLED PER MANUFACTURER SPECIFICATIONS **
BASE:
 V-1 4" VINYL COVE
PAINT:
 P-1 PAINT - REFER SPEC SECTION 099100
CEILING:
 CS-1 ARMSTRONG MODEL #949 TEXTURED w/ PRELUDE 15/16 GRID SYSTEM
 CS-2 ARMSTRONG MODEL #934 RANDOM TEXTURED w/ PRELUDE 15/16 GRID SYSTEM
 CS-3 ARMSTRONG MODEL #492 YUMA WHITE w/ PRELUDE 15/16 GRID SYSTEM
 CS-4 ARMSTRONG MODEL #241 SUPERTUFF w/ PRELUDE 15/16 GRID SYSTEM
TOILET/URINAL PARTITIONS:
 BRADLEY URINAL SCREENS, SOLID PHENOLIC CORE, WALL HUNG WITH STIRRUP BRACKETS
 BRADLEY FLOOR BRACED TOILET PARTITIONS, SOLID PHENOLIC CORE SERIES 500

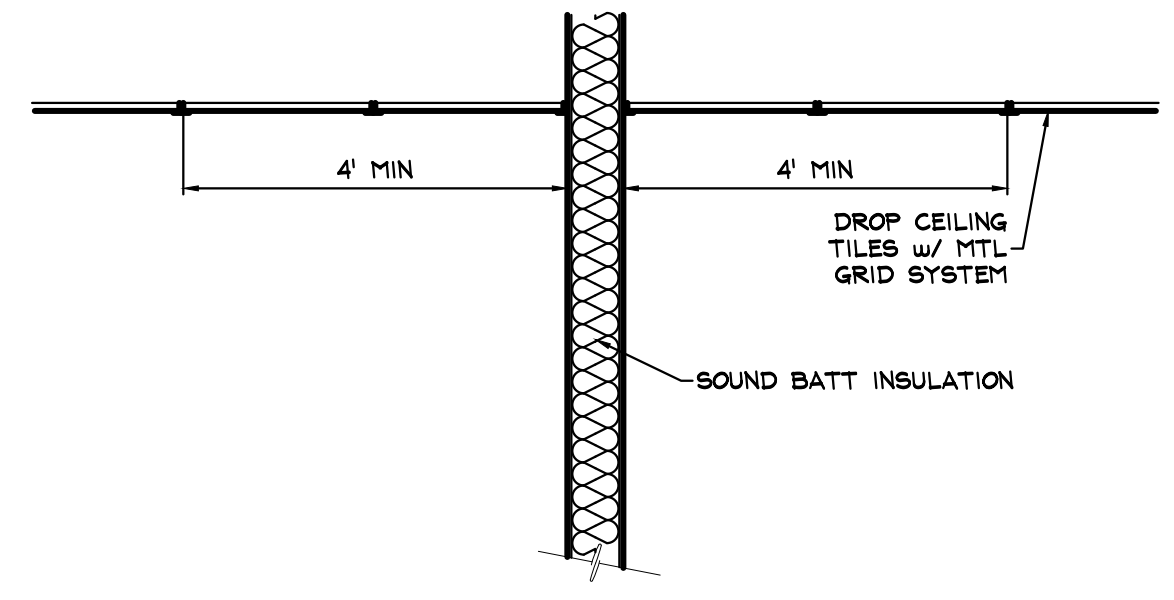
FINISH NOTES:
 1. CONTRACTOR TO COORDINATE COLOR SELECTION AND PROVIDE SAMPLES TO THE OWNER.
 2. CONTRACTOR TO FOLLOW ALL MANUFACTURERS INSTRUCTIONS PERTAINING TO THE APPLICATION OF FINISHING MATERIALS AND COMPONENTS.
 3. CONTRACTOR AND ALL SUB-CONTRACTORS TO USE COMMON SUPPLIERS OF BUILDING PRODUCTS, COMPONENTS, MATERIALS, ETC., IN ORDER TO MAINTAIN UNIFORM COLOR, FINISHES, AND STYLES.
 4. ALL WALL PAINTING SHALL EXTEND 6" ABOVE SUSPENDED CEILING SYSTEMS.
 5. ALL FINISHES AND FINISHED MATERIALS SHALL BE PROTECTED AND STORED BY CONTRACTOR UNTIL TIME OF INSTALLATION. CONTRACTOR TO PROTECT ALL INSTALLED FINISHES, MATERIALS, FIXTURES, ETC., TO PREVENT PREMATURE WEAR, DAMAGE, AND SOILING PRIOR TO THE OCCUPANCY OF THE BUILDING. CONTRACTOR IS RESPONSIBLE FOR CLEANING, REPLACING, OR REPAIRING, OF WORN, DAMAGED, AND SOILED MATERIALS, FIXTURES, COMPONENTS, ETC., PRIOR TO THE OCCUPANCY OF THE BUILDING.
CEILING NOTES:
 1. ALL CEILING HEIGHTS ARE TAKEN FROM TOP OF FINISHED SLAB.
 2. ALL LIGHTING FIXTURES SHOWN WITHIN SUSPENDED CEILING GRID ARE TO BE MOUNTED INTO OPEN METAL GRID SYSTEM PRIOR TO INSTALLATION OF CEILING PANELS. CONTRACTOR TO NOTIFY ELECTRICAL CONTRACTOR 24 HRS. IN ADVANCE TO START OF GRID INSTALLATION.
 3. CONTRACTOR TO PROVIDE CEILING GRID LAYOUT TO ARCHITECT/ENGINEER FOR APPROVAL. THE ORIENTATION OF GRID BEAMS, RUNNERS, ETC. MAY BE ADJUSTED TO DECREASE THE AMOUNT OF WASTED CEILING MATERIALS.
 4. MECHANICAL AND ELECTRICAL CONTRACTORS TO SUPPLY AND INSTALL REQUIRED FIXTURES IN THE SUSPENDED CEILING SYSTEM AT REQUIRED LOCATIONS AND QUANTITIES.

WINDOW SCHEDULE

MARK	QTY.	SIZE	MATERIAL	TYPE	FRAME DETAILS	REMARKS
W101	B	4'-0" x 3'-4"	H.M.	A	HEAD JAMB SILL MULLION	THERMAL BREAK
CONTRACTOR TO PROVIDE VINYL ROLLER SHADES AT EACH WINDOW						



NOTE:
 EXTERIOR FLASHING AND TRIM DETAIL FOR WINDOWS AND DOORS BY PRE-ENGINEERED BUILDING MANUF.



TYPICAL SOUND WALL SECTION
 SCALE: 1/2" = 1'-0"

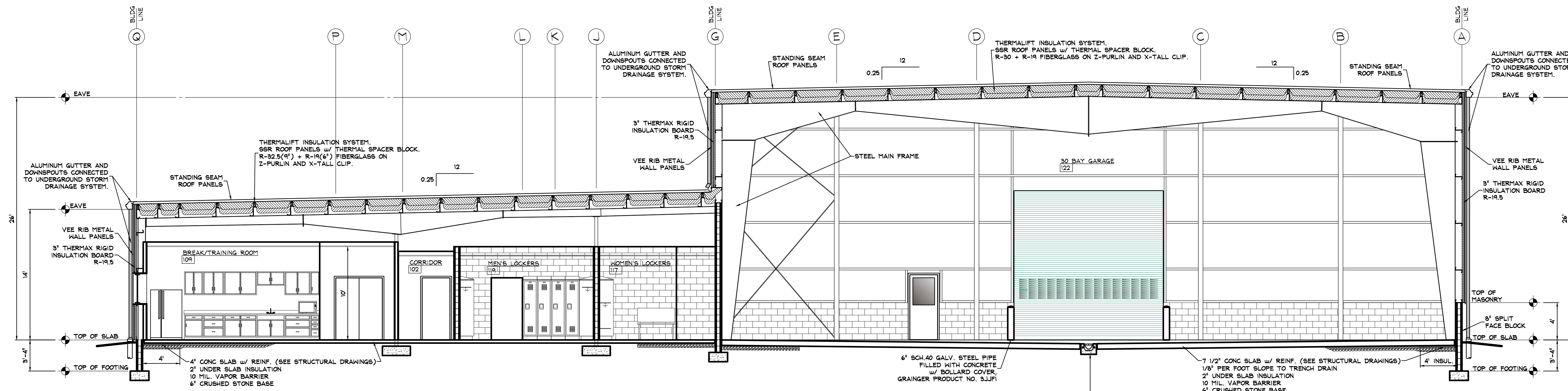
1	10/25/19	ISSUE FOR BID	JWS
NO.	DATE	REVISION	BY

SDE SYSTEMS DESIGN ENGINEERING, INC
 1032 JAMES DR. LEESPORT, PA 19533
 PHONE: 610.916.8500 FAX: 610.916.8501
 3015 TOWNSHIP RD. SUITE 100, BERKS COUNTY, PA 17804
 SCHUYLKILL HAVEN, PA 570.385.5549

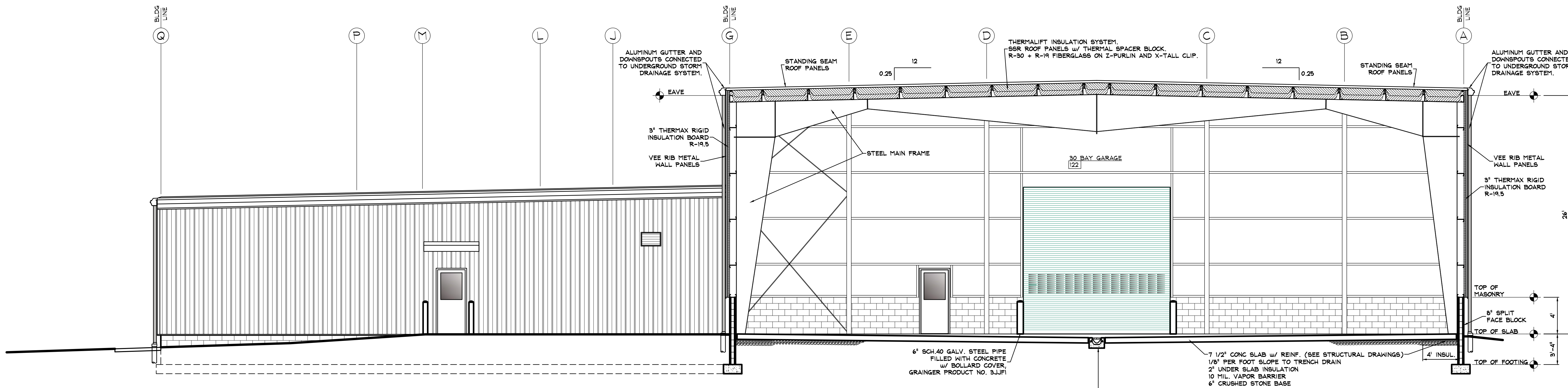
MUHLENBERG TOWNSHIP PROPOSED PUBLIC WORKS BUILDING FINISH/WINDOW SCHEDULES - WALL TYPES

MUHLENBERG TOWNSHIP DRAWN BY: JWS DATE: 08/23/19	CHECKED BY: TSU SCALE: AS NOTED	APPROVED BY: TSU DATE: 08/23/19	CAD FILE NAME: A402 FINISH-WINDOW SCHEDULES AND DETAILS.dwg DRAWING NUMBER: D-19-0153-0144-A402
--	------------------------------------	------------------------------------	--

Copyright 2019, Systems Design Engineering, Inc. - All Rights Reserved. Design Project: Muhlenberg Township Public Works Building. Schedules and Details.dwg - October 26, 2019 3:22 PM by JWS



BUILDING CROSS SECTION 1
SCALE: 3/16" = 1'-0"



BUILDING CROSS SECTION 2
SCALE: 3/16" = 1'-0"

1	10/25/19	ISSUE FOR BID	JWS
NO.	DATE	REVISION	BY

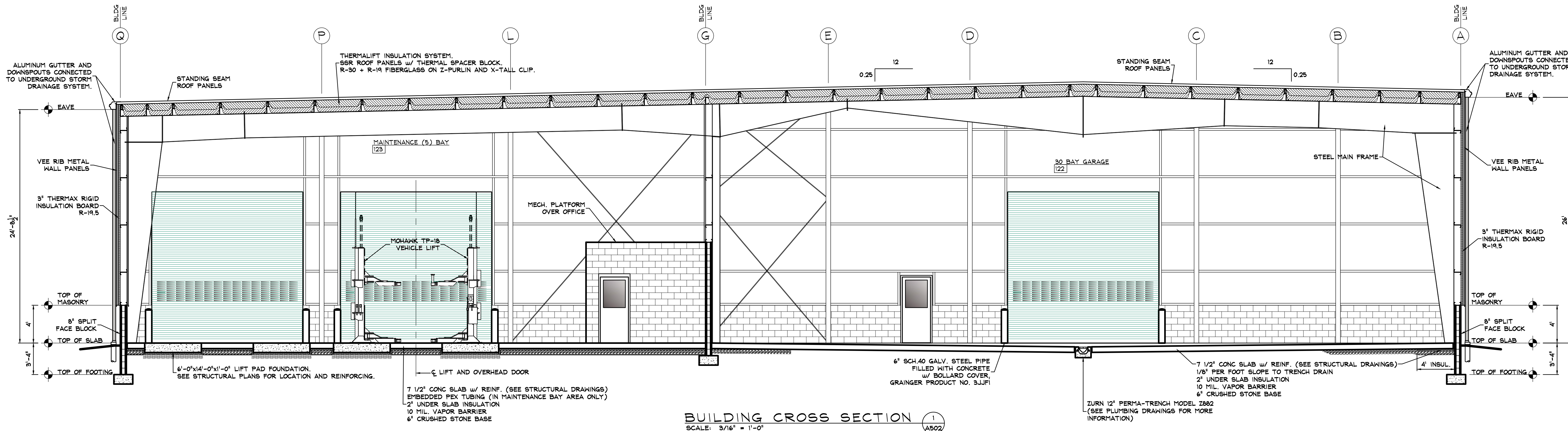
SYSTEMS DESIGN ENGINEERING, INC
 1032 JAMES DR. LEESPORT, PA 19533
 PHONE: 610.916.8500 FAX: 610.916.8501

MUHLENBERG TOWNSHIP PROPOSED PUBLIC WORKS BUILDING BUILDING SECTIONS

MUHLENBERG TOWNSHIP BERKS COUNTY PENNSYLVANIA

DRAWN BY	CHECKED	APPROVED	CADD FILE NAME
JWS	TSU	TSU	A501 Building Sections.dwg
DATE	SCALE	DRAWING NUMBER	
08/23/19	3/16" = 1'-0"	D-19-0153-0144-A501	

Copyright 2019, Systems Design Engineering, Inc. All Rights Reserved. Design Project: A501 Building Sections.dwg - October 26, 2019 12:32 pm by jamez



© Copyright 2019, Systems Design Engineering, Inc., 112015014, North Facility - BMJ Design (01 - Design Phase Drawings/Architectural/Sheet/A502 Building Sections.dwg - October 26, 2019 12:32 pm by jamez

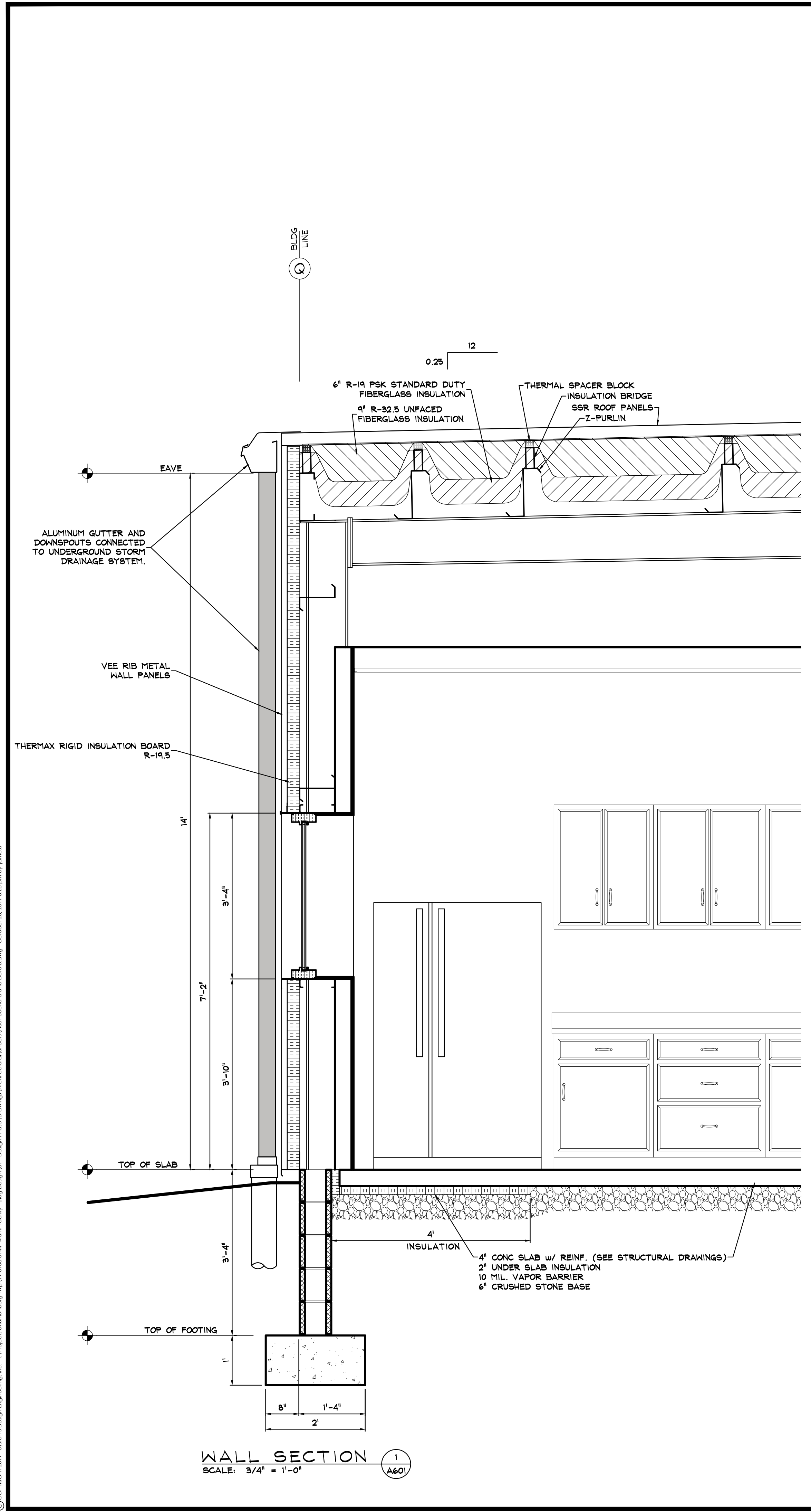
1	10/25/19	ISSUE FOR BID	JWS
NO.	DATE	REVISION	BY

SYSTEMS DESIGN ENGINEERING, INC
 1032 JAMES DR. LEESPORT, PA 19533
 PHONE: 610.916.8500 FAX: 610.916.8501
 BOYKISTOWN, PA 610.369.1310
 SCHUYKILL HAVEN, PA 570.385.5549

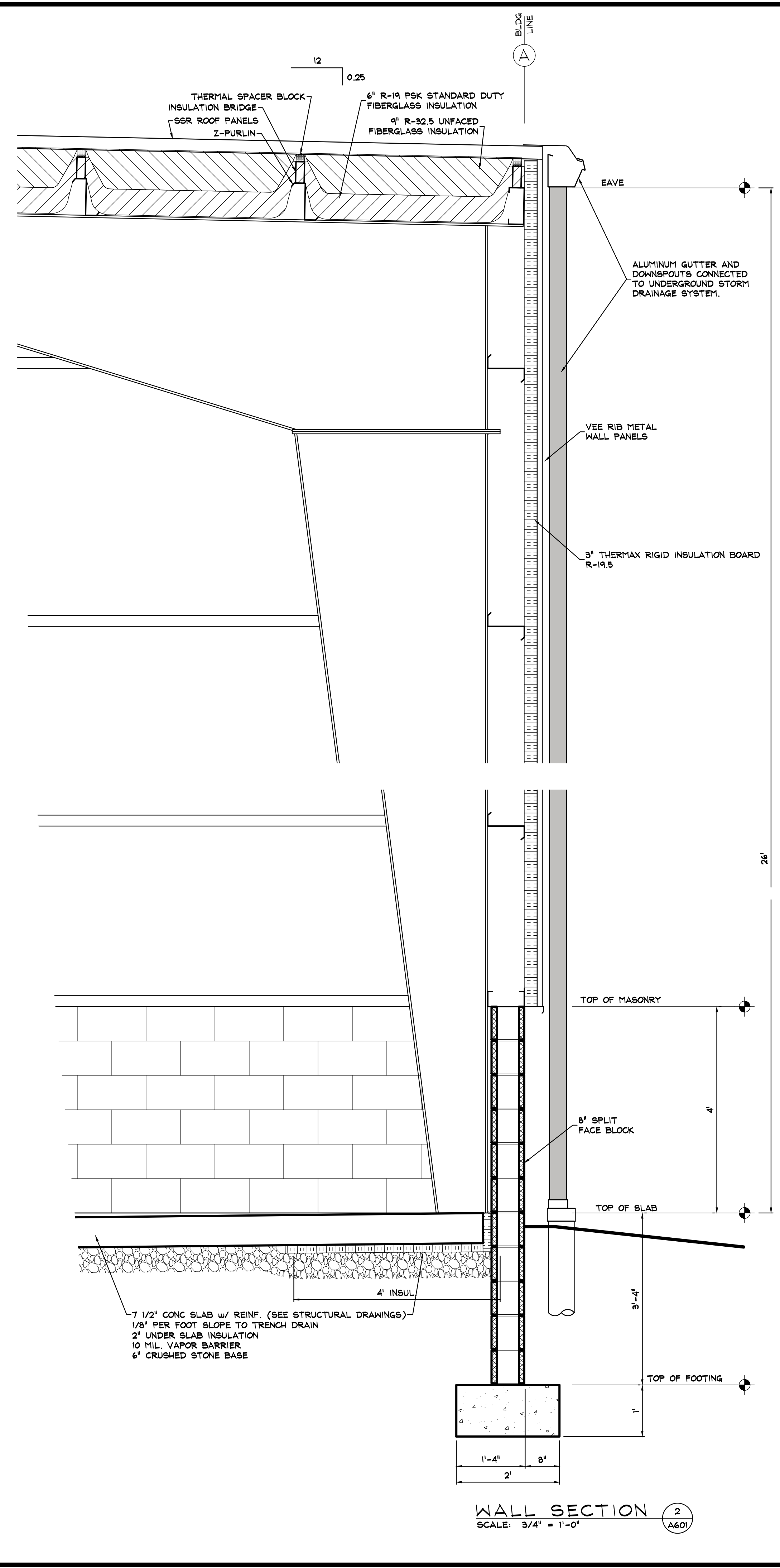
MUHLENBERG TOWNSHIP PROPOSED PUBLIC WORKS BUILDING BUILDING SECTIONS

SITUATE IN
 MUHLENBERG TOWNSHIP BERKS COUNTY PENNSYLVANIA

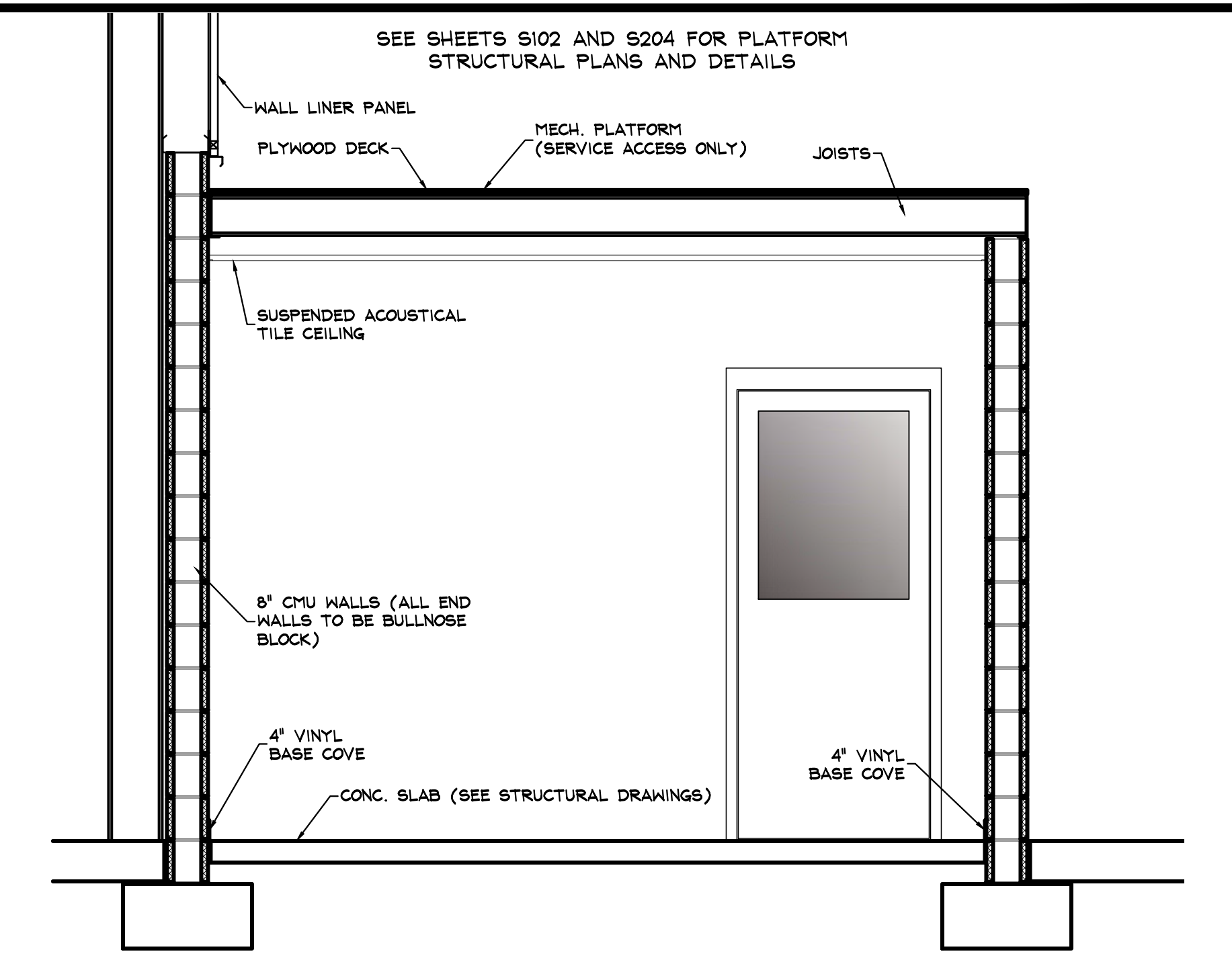
DRAWN BY	CHECKED	APPROVED	CADD FILE NAME
JWS	TSU	TSU	A502 Building Sections.dwg
DATE	SCALE	DRAWING NUMBER	
08/23/19	3/16" = 1'-0"	D-19-0153-0144-A502	



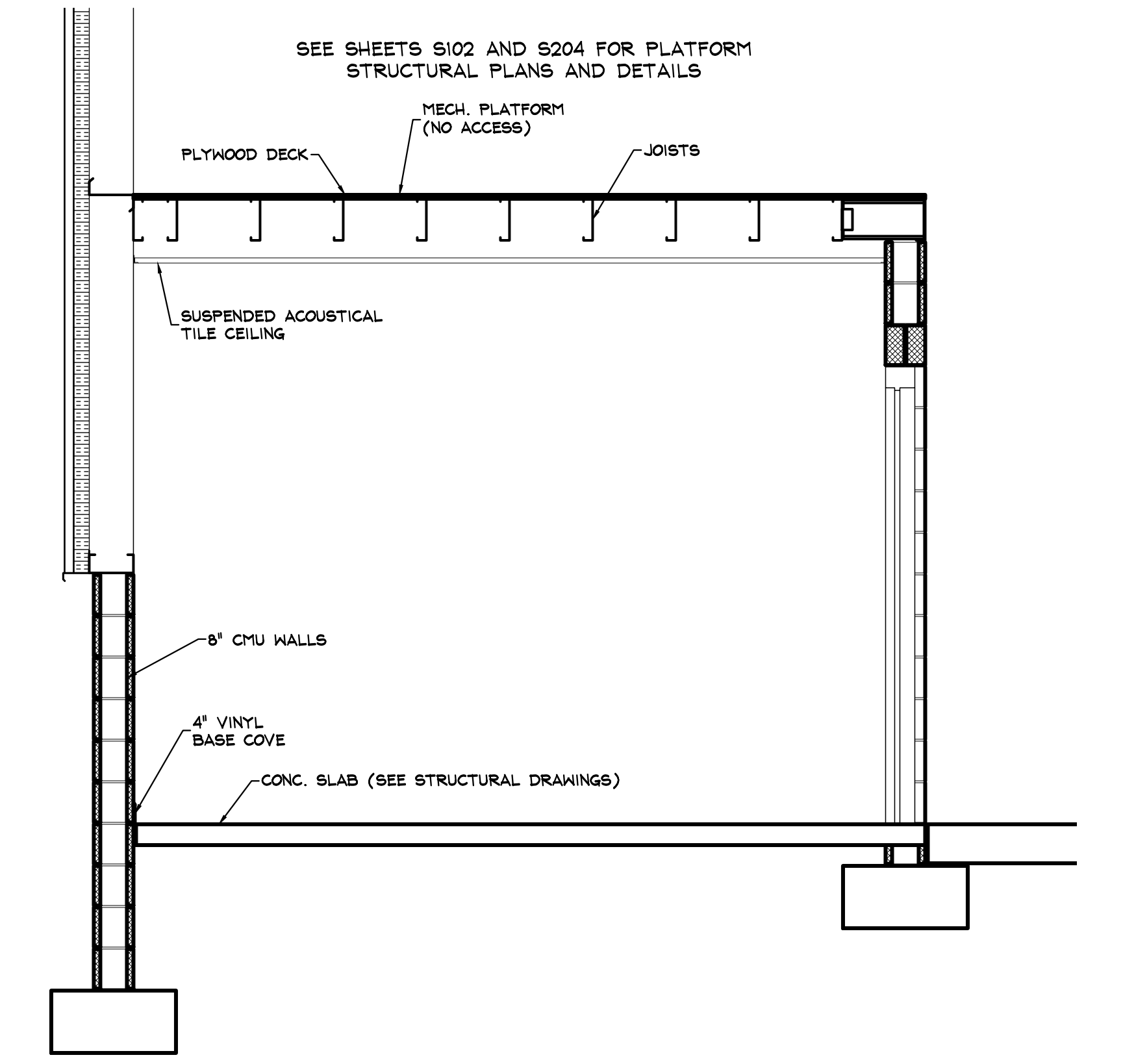
WALL SECTION 1
SCALE: 3/4" = 1'-0"



WALL SECTION 2
SCALE: 3/4" = 1'-0"



SECTION THROUGH MAINT. OFFICE/MECH PLATFORM 3
SCALE: 1/2" = 1'-0"



SECTION THROUGH MAINT. OFFICE/MECH PLATFORM 4
SCALE: 1/2" = 1'-0"

NO.	DATE	REVISION	BY
1	10/25/19	ISSUE FOR BID	JWS

		1032 JAMES DR. HESOPORT, PA 19533 PHONE: 610.916.8500 FAX: 610.916.8501	
BERKSTOWN, PA 010.369.1319 SCHUYLKILL HAVEN, PA 570.385.5549			

MUHLENBERG TOWNSHIP PROPOSED PUBLIC WORKS BUILDING SECTIONS AND DETAILS			
MUHLENBERG TOWNSHIP DRAWN BY: JWS DATE: 08/23/19		SITUATE IN BERKS COUNTY PENNSYLVANIA APPROVED: TSU CADD FILE NAME: A601 Sections and Details.dwg SCALE: AS NOTED DRAWING NUMBER: D-19-0153-0144-A601	

© COPYRIGHT 2019 - Systems Design Engineering, Inc. - All Rights Reserved. Design Phase Drawings/Architectural Sheets/A601 Sections and Details.dwg - October 26, 2019 3:23 pm by James