

PENNSYLVANIA ONE CALL SYSTEM, INC.  
925 IRWIN RUN ROAD  
WEST MIFFLIN, PENNSYLVANIA  
15122-1078



Know what's below.  
Call before you dig.

BEFORE YOU DIG ANYWHERE IN  
PENNSYLVANIA CALL 1-800-242-1776  
NON-MEMBERS MUST BE CONTACTED DIRECTLY  
PA LAW REQUIRES THREE WORKING DAYS  
NOTICE TO UTILITIES BEFORE YOU EXCAVATE,  
DRILL, BLAST OR DEMOLISH

SERIAL NO. :  
20191080401

SHEET	DESCRIPTION
1 of 4	COVER SHEET
2 of 4	GENERAL NOTES AND DETAILS
3 of 4	EXISTING CONDITIONS PLAN
4 of 4	PROPOSED CONDITIONS PLAN

HOP	DISTRICT	COUNTY	TOWNSHIP	ROUTE	SECTION	TOTAL SHEETS
	5-0	BERKS	MUHLENBERG	1004		04

# HIGHWAY OCCUPANCY PERMIT PLANS

## FOR

# MUHLENBERG TOWNSHIP PUBLIC WORKS BUILDING

## LOW VOLUME DRIVEWAYS

### S.R. 1004 (LEESPORT AVENUE)

MUHLENBERG TOWNSHIP, BERKS COUNTY, PENNSYLVANIA

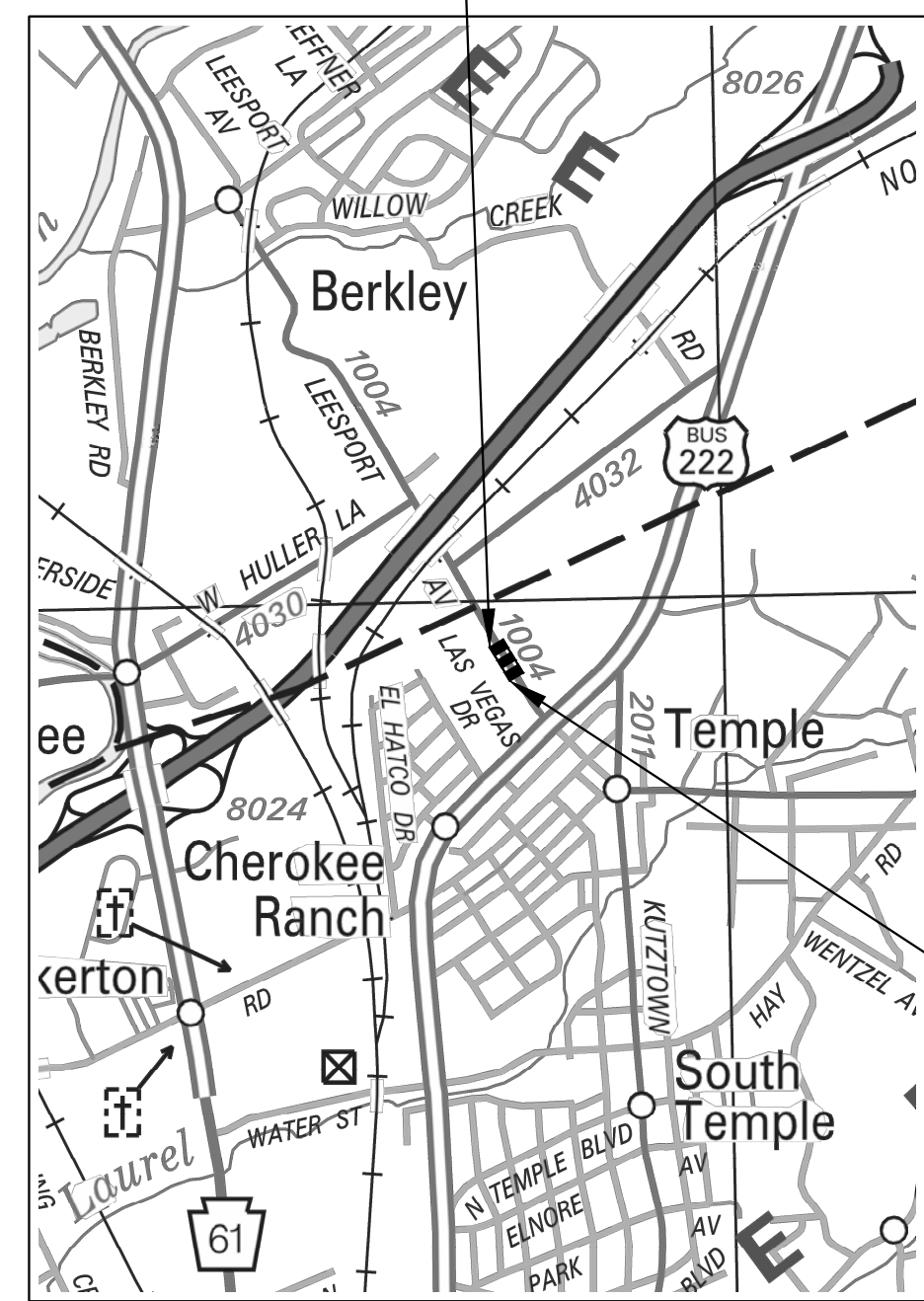
STATE ROUTE 1004  
FROM STA. 9+54.87 TO 13+62.14  
FROM SEG. 0040 OFFSET 0782 TO SEG. 0040 OFFSET 1189  
LENGTH 407 FT., 0.08 MI.

HOP APPLICATION NUMBER 191621

PREPARED FOR:

**MUHLENBERG TOWNSHIP**  
210 GEORGE STREET  
READING, PA 19605-3164

LIMIT OF WORK  
S.R. 1004 FROM  
STA. 9+54.87  
SEG 0040, OFFSET 0782  
MUHLENBERG TOWNSHIP  
BERKS COUNTY



LIMIT OF WORK  
S.R. 1004  
STA. 13+62.14  
SEG 0040, OFFSET 1189  
MUHLENBERG TOWNSHIP  
BERKS COUNTY

LEGEND

- PROJECT WORK AREA
- STATE HIGHWAY
- TOWNSHIP ROADS
- RAILROAD

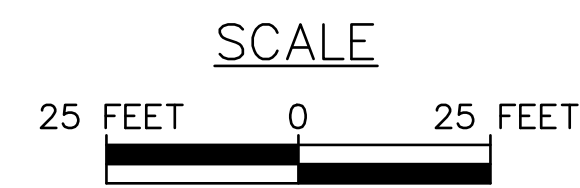
DESIGN DESIGNATION

- S.R. 1004
- HIGHWAY CLASSIFICATION - URBAN-COLLECTOR
- ROADWAY TYPOLOGY - COMMUNITY COLLECTOR
- DESIGN SPEED - 40 MPH
- PAVEMENT WIDTH - 32.0'
- SHOULDER WIDTH - RT - (VARIES 6.0' TO 8.0')
- LT - 0'

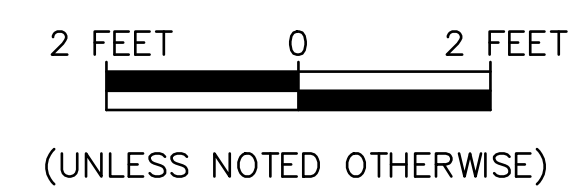
S.R. 1004 TRAFFIC DATA (DIR: BOTH)

- CURRENT A.D.T. - 7,388 (2019)
- DESIGN YEAR A.D.T. - 7,462 (2024)
- D.H.V. - 821
- D - 60
- T - 2
- TRUCKS - 3%

HORIZONTAL



VERTICAL



(UNLESS NOTED OTHERWISE)

LIST OF PUBLIC UTILITIES  
ALL DESIGNERS AND CONTRACTORS UTILIZING  
THIS PLAN AND THE INFORMATION CONTAINED  
THEREON ARE CAUTIONED TO COMPLY WITH  
THE REQUIREMENTS OF PENNSYLVANIA ACT  
287 OF 1974, AS AMENDED, ENTITLED  
"UNDERGROUND UTILITY LINE PROTECTION."

SERIAL NO. 20191080401

FRONTIER COMMUNICATIONS OF PA INC.  
67 S MAIN ST.  
SHICKSHINNY, PA 18655  
800-921-8101  
CONTACT: JOHN BUGDONOVITCH  
EMAIL: john.bugdonovitch@ftr.com

COMCAST  
400 RIVERFRONT DR.  
READING, PA 19602  
1-855-855-4577  
CONTACT: JEFF JACOVIDIS  
EMAIL: jeff\_jacovidis@cable.comcast.com

BUCKEYE PARTNERS  
FIVE TEK PARK  
9999 HAMILTON BLVD  
BRENIGSVILLE, PA 18031  
800-230-7224  
CONTACT: DAVE JONES  
EMAIL: DAJONES@BUCKEYE.COM

VERIZON PENNSYLVANIA LLC  
15 MONTGOMERY AVE, FLOOR 2  
PITTSBURGH, PA 15212  
215-466-9900  
CONTACT: DEBORAH BARUM  
EMAIL: deborah.d.delia@verizon.com

FIRSTENERGY CORP  
76 S MAIN ST.  
AKRON, OH 44308-1890  
800-545-7741  
CONTACT: OFFICE PERSONNEL

MUHLENBERG TOWNSHIP AUTHORITY  
2840 KUTZTOWN ROAD  
READING, PA 19605  
601-929-4709  
CONTACT: JEFFREY CALPINO  
EMAIL: jcalpino@comcast.net

READING AREA WATER AUTHORITY  
1801 KUTZTOWN RD.  
READING, PA 19604  
610-406-6300  
CONTACT: ANTHONY STEINLE  
EMAIL: anthony.steinle@readingareawater.com

UGI UTILITIES  
225 MORGANTOWN RD  
READING, PA 19611  
610-375-4441  
CONTACT: KURT ZIELASKOWSKI  
kzielaskowski@ugi.com

NO.	DATE	REVISION	BY

PREPARED BY:  
SYSTEMS DESIGN ENGINEERING, INC.  
1032 JAMES DR.  
LEESPORT, PA 19533



CRAIG MOMOSE, P.E.

DATE: 10/16/2019

**SYSTEMS DESIGN**  
ENGINEERING, INC  
1032 JAMES DR. LEESPORT, PA 19533  
PHONE: 610.916.8500 FAX: 610.916.8501  
BOYERTOWN, PA 610.399.1319  
SCHUPPERT HAVEN, PA 610.385.5549

**MUHLENBERG TOWNSHIP**  
PUBLIC WORKS BUILDING  
HIGHWAY OCCUPANCY PERMIT

COVER SHEET  
5401 LEESPORT AVENUE, TEMPLE, PA 19560

SITUATED IN  
MUHLENBERG TOWNSHIP BERKS COUNTY PENNSYLVANIA

DRAWN BY	CHECKED	APPROVED	CADD FILE NAME
MAL	GAB	CM	Sh1 1.dwg
DATE	SCALE	DRAWING NUMBER	
8/28/2019	AS NOTED	D-19-0153-0143-G001	

**DRIVEWAYS AND LOCAL ROADS**

1. THE EXISTING SPEED LIMIT ON S.R. 1004 IS 40 M.P.H.
2. THE RIGHT-OF-WAY IS 33- FEET FREE ACCESS.
3. ALL WORK IN PA STATE HIGHWAY RIGHT-OF-WAY IS TO BE PERFORMED

CONSISTENT WITH THE FOLLOWING:

- A. PENNDOT PUBLICATION 13M, DESIGN MANUAL PART 2 - HIGHWAY DESIGN
- B. PENNDOT PUBLICATION 34, APPROVED AGGREGATE PRODUCERS (BULLETIN 14)
- C. PENNDOT PUBLICATION 35, APPROVED CONSTRUCTION MATERIALS (BULLETIN 15)
- D. PENNDOT PUBLICATION 41, PRODUCERS OF BITUMINOUS MATERIALS (BULLETIN 41)
- E. PENNDOT PUBLICATION 42, PRODUCERS OF READY-MIX CONCRETE (BULLETIN 42)
- F. PENNDOT PUBLICATION 46, TRAFFIC ENGINEERING MANUAL
- G. PENNDOT PUBLICATION 72M, STANDARDS FOR ROADWAY CONSTRUCTION
- H. PENNDOT PUBLICATION 111, PAVEMENT MARKINGS AND SIGNING STANDARDS
- I. PENNDOT PUBLICATION 212, OFFICIAL TRAFFIC CONTROL DEVICES
- J. PENNDOT PUBLICATION 213, TEMPORARY TRAFFIC CONTROL GUIDELINES
- K. PENNDOT PUBLICATION 408, SPECIFICATIONS

4. DETAILS, OTHER THAN THOSE INDICATED, ARE ON THE FOLLOWING STANDARD DRAWINGS:

RC-13M (JUNE 1, 2010)	RC-46M (SEPT. 15, 2016)
RC-27M (JUNE 1, 2010)	TC-8600 JUNE 13, 2013
RC-30M (FEB. 8, 2019)	TC-8702B JUNE 13, 2013
RC-39M (SEPT. 15, 2016)	TC-8716 JUNE 13, 2013
RC-45M (SEPT. 15, 2016)	TC-8717 JUNE 13, 2013

5. THE DRIVEWAY HAS BEEN DESIGNED (AND WILL BE CONSTRUCTED AND MAINTAINED) CONSISTENT WITH TITLE 67, CHAPTER 441 REGULATIONS.

6. PA STATE HIGHWAY RIGHT-OF-WAY MAY NOT BE USED FOR PARKING.

7. PERMITTEE IS RESPONSIBLE FOR MAINTENANCE OF ALL AUTHORIZED STRUCTURES, FACILITIES AND DRAINAGE.

8. PERMITTEE IS RESPONSIBLE FOR MAINTENANCE OF ALL AUTHORIZED SIGNS AND PAVEMENT MARKINGS.

9. CONTACT PENNSYLVANIA ONE-CALL (1-800-242-1776) THREE WORKING DAYS BEFORE EXCAVATION OR DEMOLITION WORK. SERIAL NUMBER 20191080401, FOR MUHLENBERG TOWNSHIP.

10. ANTICIPATED AVERAGE DAILY TRAFFIC (ADT) FOR THE PROPOSED ACCESSES ARE:

SEG. 0040 OFFSET 0880: XX CARS XX SINGLE UNIT TRUCKS AND COMBINATIONS  
 SEG. 0040 OFFSET 1036: XX CARS XX SINGLE UNIT TRUCKS AND COMBINATIONS

PENNSYLVANIA ONE CALL SYSTEM, INC.  
 925 IRWIN RUN ROAD  
 WEST MIFFLIN, PENNSYLVANIA  
 15122-1078



BEFORE YOU DIG ANYWHERE IN PENNSYLVANIA CALL  
 1-800-242-1776  
 NON-MEMBERS MUST BE CONTACTED DIRECTLY PA LAW  
 REQUIRES THREE WORKING DAYS NOTICE TO UTILITIES  
 BEFORE YOU EXCAVATE, DRILL, BLAST OR DEMOLISH  
 SERIAL NO.: 20191080401

PURSUANT TO THE REQUIREMENTS OF ACT 287 OF 1974 AND AS LAST AMENDED, THE LOCATIONS OF ALL EXISTING UTILITIES SHOWN ON THESE PLANS HAVE BEEN DEVELOPED FROM EXISTING UTILITY RECORDS AND/OR ABOVE-GROUND EXAMINATIONS OF THE SITE. COMPLETENESS, ACCURACY, LOCATIONS, AND DEPTHS OF UNDERGROUND UTILITIES OR STRUCTURES CANNOT BE GUARANTEED. CONTRACTORS SHALL CONTACT THE "ONE-CALL SYSTEM" NOT LESS THAN THREE (3) BUSINESS DAYS NOR MORE THAN TEN (10) BUSINESS DAYS IN ADVANCE OF EXCAVATION OR DEMOLITION WORK, AND SHALL BE RESPONSIBLE FOR VERIFYING THE LOCATIONS AND DEPTHS OF ALL UNDERGROUND FACILITIES LOCATED WITHIN THE VICINITY OF THE WORK SITE IN ACCORDANCE WITH ACT 287 OF 1974 AS AMENDED.

**NOTES:**

1. SYSTEMS DESIGN ENGINEERING, INC. ("SDE") HAS PERFORMED A DESIGN NOTIFICATION IN COMPLIANCE WITH PENNSYLVANIA ACT 287 OF 1974 AS AMENDED. SDE MAKES NO REPRESENTATION OR GUARANTEE THAT THE INFORMATION RECEIVED IN RESPONSE TO THE NOTIFICATION AND AS DEPICTED ON THESE DRAWINGS IS ACCURATE OR COMPLETE. SDE IS DEPICTING THIS INFORMATION ON THESE DRAWINGS PURSUANT TO THE REQUIREMENTS OF ACT 287 OF 1974 AS AMENDED.
2. THE LOCATIONS OF UNDERGROUND UTILITIES DEPICTED ON THESE DRAWINGS ARE APPROXIMATE, AND ARE BASED ON ABOVE-GROUND OBSERVATIONS, FACILITY OWNER RESPONSES AND/OR FROM BEST AVAILABLE DRAWING INFORMATION.
3. IT SHALL BE THE RESPONSIBILITY OF THE CONTRACTOR TO COORDINATE WITH THE APPROPRIATE UTILITY THE REMOVAL, ABANDONMENT, RELOCATION, INSTALLATION OR CONNECTION TO ANY PUBLIC UTILITY (GAS, ELECTRIC, TELEPHONE, CABLE TV, FIBER OPTIC COMMUNICATIONS, ETC.)
4. ALL EXISTING UNDERGROUND UTILITY LOCATIONS MUST BE VERIFIED WITH THE APPROPRIATE UTILITY COMPANY AND/OR CONTRACTOR PRIOR TO ANY EXCAVATION OR DEMOLITION WORK.

**MAINTENANCE AND PROTECTION OF TRAFFIC**

THIS WORK CONSISTS OF THE MAINTENANCE AND PROTECTION OF TRAFFIC AND THE PROTECTION OF THE PUBLIC WHEN APPROACHING AND DEPARTING THE CONSTRUCTION AREA AND WITHIN THE LIMITS OF CONSTRUCTION.

FURNISH, ERECT, PLACE AND MAINTAIN TRAFFIC CONTROL SIGNS AND DEVICES AND MAINTAIN TRAFFIC DURING HOURS OF CONSTRUCTION AND AT ALL OTHER TIMES IN ACCORDANCE WITH THE METHODS INDICATED ON THESE DRAWINGS AND:

1. PENNDOT PUBLICATION 213 (PA CODE, TITLE 67, CHAPTER 212, WORK ZONE TRAFFIC CONTROL.)
2. PENNDOT PUBLICATION 35
3. PENNDOT PUBLICATION 46
4. PENNDOT PUBLICATION 72M
5. PENNDOT PUBLICATION 408
6. PENNDOT PUBLICATION 111
7. PENNDOT PUBLICATION 212
8. PENNDOT PUBLICATION 236
9. MUTCD, CURRENT EDITION
10. THE SPECIAL PROVISIONS OF THE CONTRACT.

IMMEDIATELY UPON COMPLETION OF THE WORK, REMOVE THE TRAFFIC CONTROL SIGNS AND DEVICES. THE DEPARTMENT WILL REMOVE ANY TRAFFIC CONTROL SIGNS AND DEVICES ERECTED BY DEPARTMENT FORCES.

THE INSPECTOR-IN-CHARGE WILL INSPECT ALL TRAFFIC CONTROL DEVICES PRIOR TO START OF WORK.

COVER OR REMOVE ALL CONFLICTING SIGNS AND SIGNS NOT IN USE,

REMOVE ALL CONFLICTING PAVEMENT MARKINGS.

ALL SIGNS ARE TO BE MOUNTED ON TYPE III BARRICADES UNLESS OTHERWISE NOTED.

ALL SIGNS ARE TO BE IN NEW OR LIKE NEW CONDITION AND MAINTAINED AS SUCH.

LOCATE ALL SIGNS SO THAT SIGHT DISTANCE WILL NOT BE OBSTRUCTED AT DRIVEWAYS AND SIDE STREETS.

ALL LONG TERM ADVANCE WARNING SIGNS TO BE TYPE III OR TYPE VII ORANGE RETRO-REFLECTIVE SHEETING MATERIAL.

THE CONTRACTOR IS TO NOTIFY THE LOCAL EMERGENCY UNITS (POLICE, FIRE, MEDICAL, ETC.) BUSINESSES, SCHOOL DISTRICT AND THE GENERAL PUBLIC AT LEAST ONE WEEK PRIOR TO THE START OF WORK.

PROPERLY BARRICADE AND SECURE THE WORK AREA DURING WORKING HOURS TO PROVIDE FULL WIDTH USE FOR THROUGH TRAFFIC LANES UNDER SHORT TERM OPERATIONS. RETURN ALL LANES TO NORMAL TRAFFIC FLOW AT THE CLOSE OF THE WORKDAY.

REMOVE EXISTING DEPARTMENT WARNING, REGULATORY, GUIDE AND DIRECTIONAL SIGNS AS REQUIRED TO ACCOMMODATE CONSTRUCTION OPERATIONS. DO NOT REMOVE STOP OR YIELD SIGNS UNLESS AN ALTERNATE TYPE OF TRAFFIC CONTROL IS PROVIDED, SUCH AS FLAGGERS, TEMPORARY TRAFFIC SIGNALS, ETC. CONTINUE THE ALTERNATE TRAFFIC CONTROL UNTIL THE STOP AND/OR YIELD SIGN ARE REPLACED.

MAINTENANCE AND PROTECTION OF TRAFFIC SHALL BE PROVIDED IN ACCORDANCE WITH PUBLICATION 213, "WORK ZONE TRAFFIC CONTROL DEVICES," CURRENT EDITION. FIGURES TO BE USED FOR THIS PROJECT: PATA 102 AND 107.

ALL WORK SHALL BE DONE AT A TIME AND IN A MANNER CONSISTENT WITH THE SAFETY OF THE PUBLIC AND CONFORM TO REQUIREMENTS AND STANDARDS OF PENNDOT INCLUDING, BUT NOT LIMITED TO PUBLICATION 408.

NO OPENING WITHIN RIGHT-OF-WAYS SHALL BE ALLOWED AT THE END OF EACH WORK DAY. IF A TRENCH NEEDS TO BE LEFT OPEN AT THE END OF THE DAY, REFER TO PENNDOT SPECIFICATIONS FOR ACCEPTABLE PROTECTION GUIDELINES FOR OPENING WITHIN RIGHT-OF-WAYS.

REPLACE ANY EXISTING PAVEMENT MARKINGS THAT ARE REMOVED DURING THE PROCESS OF CONSTRUCTION.

PERMITTEE MUST ARRANGE FOR INSPECTION OF ALL TRAFFIC CONTROL DEVICES PRIOR TO THE START OF WORK.

ALL CHANNELIZING DEVICES, BARRICADES, AND SIGNS SHALL HAVE TYPE III OR BETTER PRISMATIC RETROREFLECTIVE SHEETING. SHEETING SHALL BE APPROVED AND LISTED IN PENNDOT PUBLICATION 35 (BULLETIN 15).

NO TRAFFIC RESTRICTIONS OR LANE CLOSURES ARE PERMITTED BETWEEN 6:00 AM AND 9:00 AM AND BETWEEN 3:00 PM AND 6:00 PM MONDAYS THROUGH FRIDAYS OR ON LEGAL HOLIDAYS AND WEEKENDS ASSOCIATED WITH HOLIDAYS, ALL RESTRICTIONS AND CLOSURES ARE TO BE REMOVED BY NOON ON THE DAY PRIOR TO THE LEGAL HOLIDAY.

REMOVE ALL SHORT-TERM WORK ZONE TRAFFIC CONTROL SIGNING UPON COMPLETION OF THE DAY'S WORK PERIOD.

RESTRICTING TRAFFIC FLOW WITHIN THE WORK AREA SHALL BE MINIMIZED TO PREVENT TRAFFIC CONGESTION AND UNSAFE TRAFFIC CONDITIONS.

THE CONTRACTOR SHALL COMPLY WITH ACT 229 OF DECEMBER 2002 DURING CONSTRUCTION ACTIVITIES WITHIN PENNDOT'S RIGHT-OF-WAY.

DRIVEWAYS WILL BE KEPT ACCESSIBLE AT ALL TIMES. LOCATE ALL SIGNS SO THAT SIGHT DISTANCES WILL NOT BE OBSTRUCTED AT DRIVEWAYS AND LOCAL ROADS.

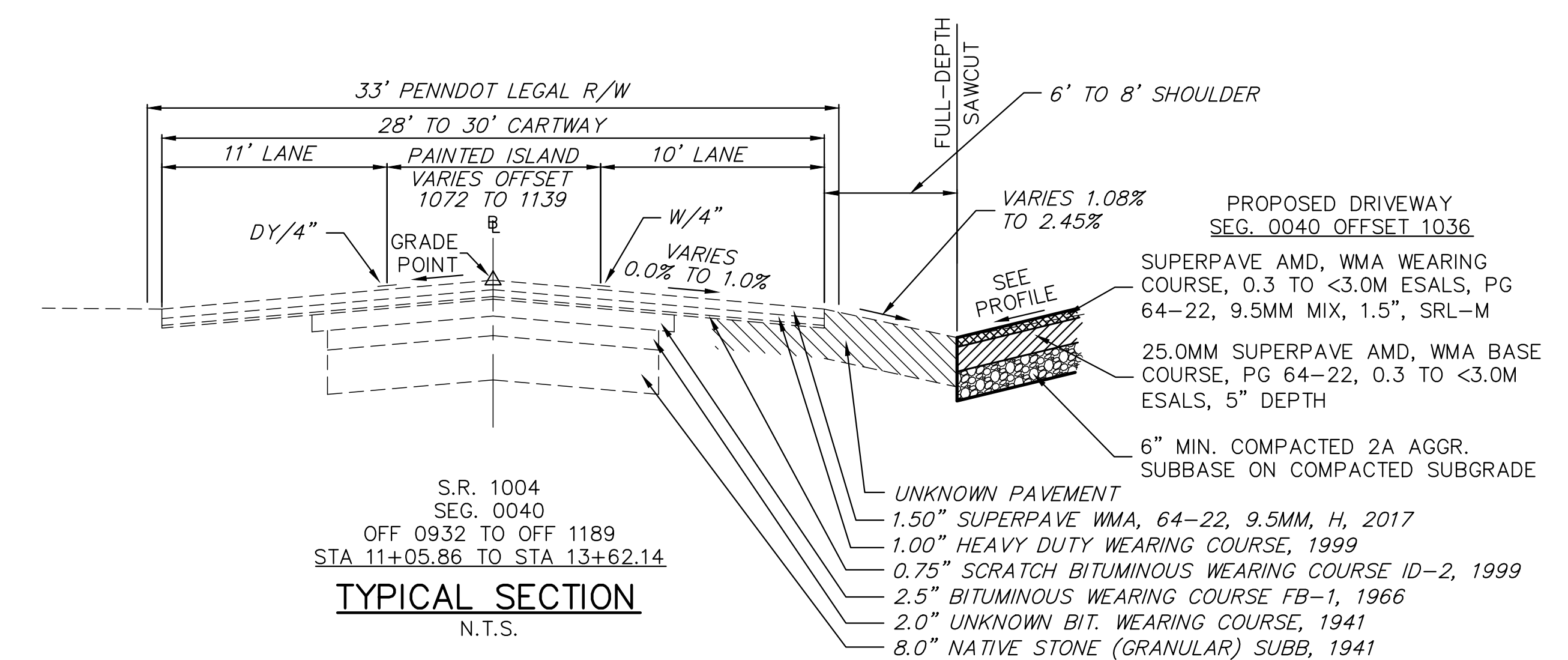
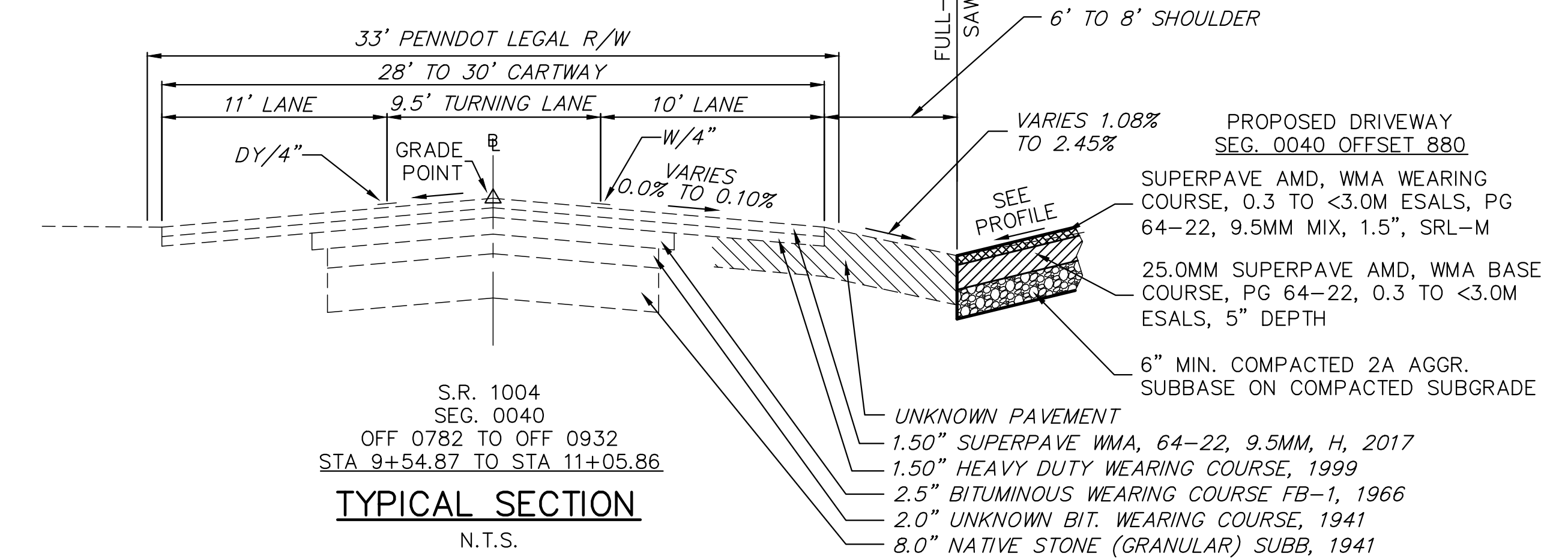
DROP-OFFS CREATED BY CONSTRUCTION OPERATIONS SHALL BE TREATED CONSISTENT WITH PUBLICATION 408, SECTION 901.3(J).

**NOTES**

NOTIFY THE DISTRICT 5-0 REGIONAL TRAFFIC MANAGEMENT CENTER (RTMC) FIFTEEN (15) MINUTES IN ADVANCE OF ANY PROPOSED LANE OR SHOULDER RESTRICTIONS, ROAD CLOSURES, OR ANY OPERATION IMPEDING THE FLOW OF TRAFFIC. NOTIFY THE RTMC WHEN THE ROAD IS RESTORED TO NORMAL OPERATION.

MPT PATA FIGURE 102 MAY ONLY BE UTILIZED IF THERE IS ADEQUATE PAVEMENT WIDTH AND/OR SITE FRONTAGE AVAILABLE TO MAINTAIN THE MINIMUM TRAVEL LANE WIDTHS (10'). USE OF MPT FIGURE PATA 102 IS AT THE DISCRETION OF A PENNDOT FIELD REPRESENTATIVE.

FOLLOW THE GENERAL NOTES AS PER THE PUB. 213 TEMPORARY TRAFFIC CONTROL GUIDELINES, DATED JUNE 2013 OR LATEST EDITION.



**PAVEMENT HISTORY CHART**

NO.	OFFSET	DESCRIPTION	YEAR	DEPTH	WIDTH
		SR 1004, SEG 0040			
01	0021 - 2061	SPAV. WMA WRG, 64-22, 9.5MM, H	2017	+1.50"	32'
02	0021 - 2061	UNKNOWN BITUMINOUS WEARING COURSE	2006	+1.50"	32'
03	0021 - 2061	HEAVY DUTY BITUM. WEARING CRSE ID-2	1999	+1.50"	32'
04	0021 - 2061	HEAVY DUTY BITUM. WEARING CRSE ID-2	1999	+1.00"	32'
05	0021 - 2061	SCRATCH BITUMINOUS WEARING COURSE ID-2	1999	+0.75"	32'
06	0021 - 2061	BITUMINOUS WEARING COURSE FB-1	1966	+2.50"	18'
07	0021 - 2061	CRUSHED AGGREGATE BASE COURSE	1966	+6.00"	2'
08	0021 - 2061	UNKNOWN BITUMINOUS WEARING COURSE	1941	+2.00"	16'
09	0021 - 2061	NATIVE STONE (GRANULAR) SUBB	1941	+8.00"	16'

NOTE: PAVEMENT HISTORY TAKEN FROM www.dot7.state.pa.us OF THE PENNSYLVANIA DEPARTMENT OF TRANSPORTATION WEB SITE.

DISTRICT	COUNTY	ROUTE	SECTION	SHEET
5-0	BERKS	1004		2 OF 4
MUHLENBERG TOWNSHIP				
REVISION NUMBER	REVISIONS	DATE	BY	

HOP APPLICATION NO. 191621

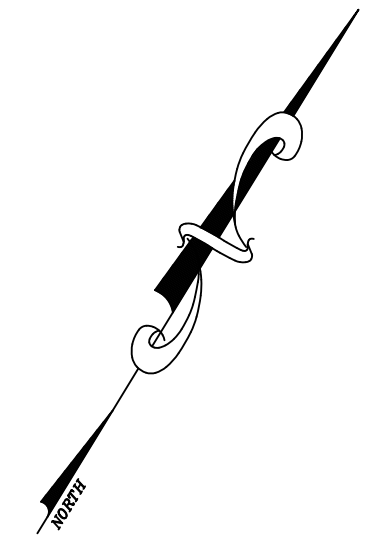
SR 1004  
 GENERAL NOTES

PREPARED BY:  
 SYSTEMS DESIGN ENGINEERING, INC.  
 1032 JAMES DR.  
 LEESPORT, PA 19533

CRAIG MOMOSE, P.E.  
 DATE: 10/16/2019

© Copyright 2019 - Systems Design Engineering, Inc. - \\\path\projects\wheeler\sr1004\sr1004.dwg - Design: Brian Gowenlock, CAD: Steven MCP, JRF 2.dwg - October 23, 2019 1:33:05 pm by James

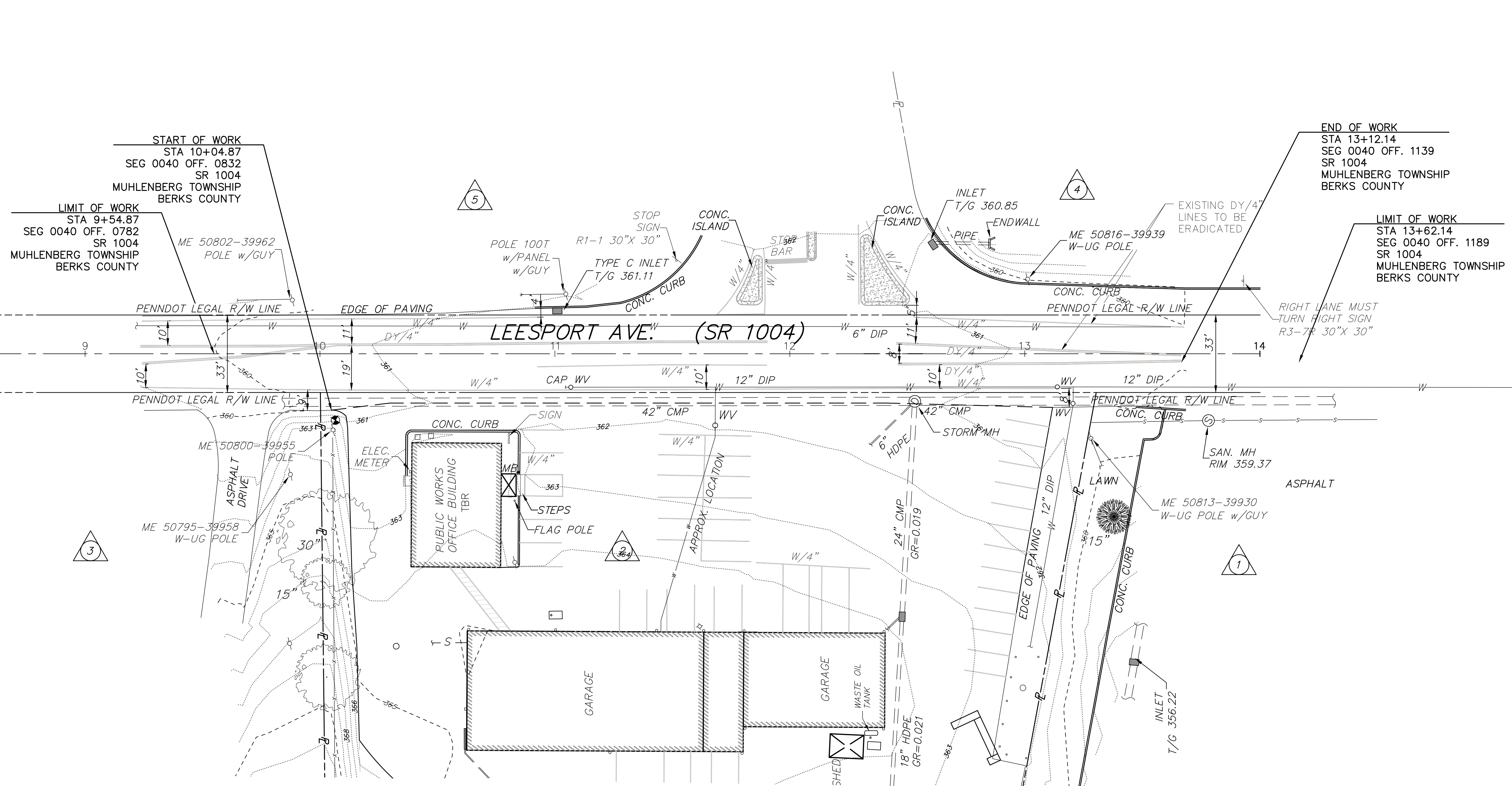
HOP APPLICATION NO. 191621



**LEGEND**

- PROPERTY LINE
- EASEMENT LINE
- LEGAL RIGHT-OF-WAY LINE
- CENTER OF ROAD
- EXISTING EDGE OF PAVING
- EXISTING SIGN
- EXISTING STORM SEWER (SIZE AND MATERIAL)
- 24" CMP
- EXISTING STORM INLET
- EXISTING CONCRETE STORM ENDWALL
- EXISTING STORM SWR MANHOLE
- EXISTING WATERLINE
- EXISTING SAN. SWR LINE
- EXISTING UTILITY POLE
- EXISTING CHAINLINK FENCE
- PROJECT BENCHMARK (MAG NAIL IN POLE, EL.)

SIGN DATA SPREADSHEET											
O - OWNER P - PENNDOT M - MUNICIPALITY PERMIT #	IN - INSTALL NEW RI - REPLACE INSTALLATION REL - RELOCATE INSTALLATION RM - REMOVE ER - EXISTING TO REMAIN	SR	DESCRIPTION/ NOMENCLATURE	SIGN TYPE/ DESCRIPTION	SEGMENT	OFFSET	WIDTH	HEIGHT	ASCENDING/ DECENDING/ INTERSECTION	LEFT/ RIGHT/ OVERHEAD	
M	IN	1004	R6-1R	ONE WAY	0040	0870	36"	12"	A	R	
M	IN	1004	R6-1L	ONE WAY	0040	0890	36"	12"	D	L	
M	ER	1004	R1-1	STOP	0040	0979	30"	30"	I	R	
M	IN	1004	R1-1	STOP	0040	1050	30"	30"	I	R	
O	ER	1004	R3-7R	RIGHT LANE MUST TURN RIGHT	0040	1205	30"	30"	D	R	



- SAMS REAL ESTATE BUSINESS TRST
- MUHLENBERG TOWNSHIP
- MET ED C/O FIRST ENERGY SRVC CO TAX DPT
- CHASE1 LP
- NORTH READING PLAZA INV LP

HORIZONTAL 25 FEET 0 25 FEET

PREPARED BY:  
SYSTEMS DESIGN ENGINEERING, INC.  
1032 JAMES DR.  
LEESPORT, PA 19533



SR 1004  
EXISTING CONDITIONS PLAN

CRAIG MOMOSE, P.E.  
DATE: 9/12/2019

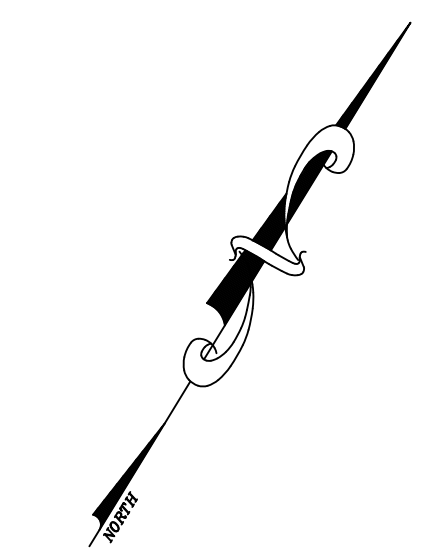
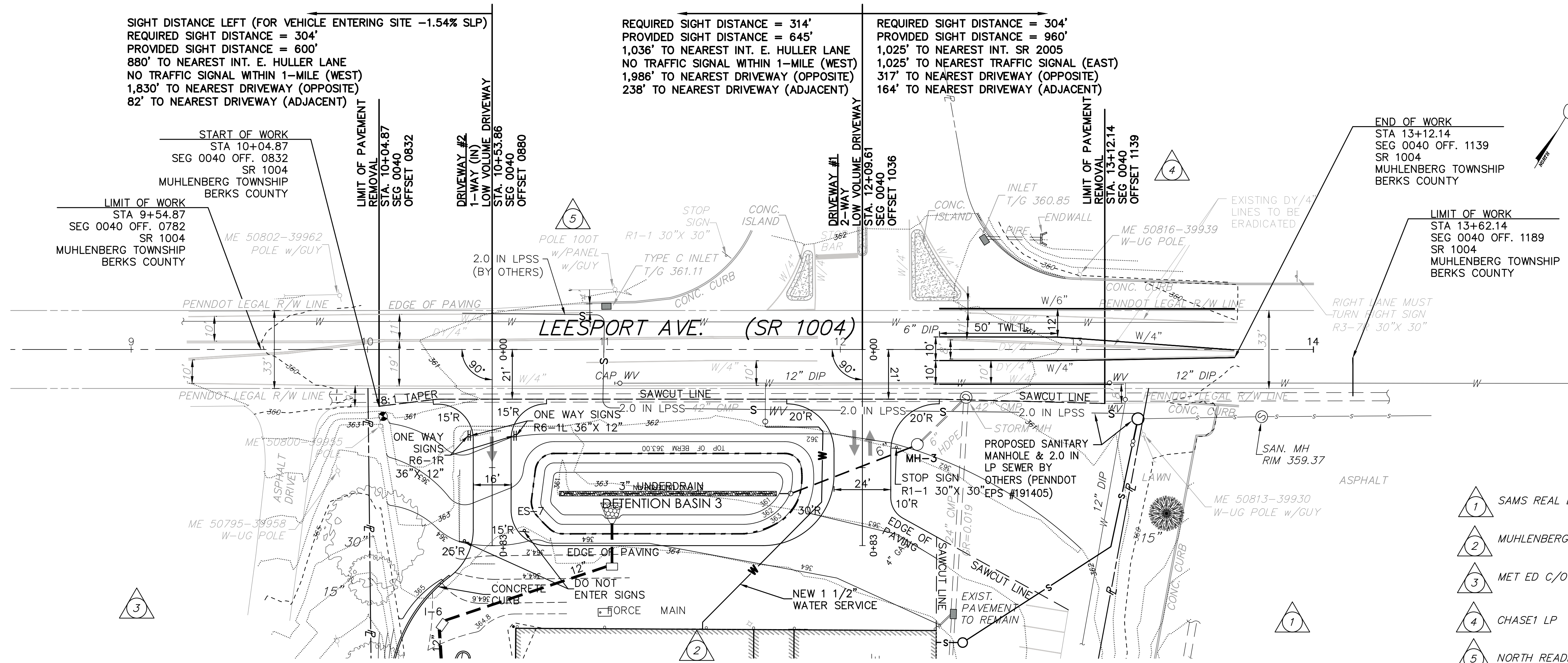
Copyright 2019, Systems Design Engineering, Inc., \\\udata\ddata\Projects\Muhlenberg\191621\SR1004\_Existing Conditions\Drawings\CD\Sheet\SR1004\_Existing Conditions.dwg, October 25, 2019 11:34 am by jmm

DISTRICT	COUNTY	ROUTE	SECTION	SHEET
5-0	BERKS	1004		4 OF 4
MUHLENBERG TOWNSHIP				
REVISION NUMBER	REVISIONS			DATE

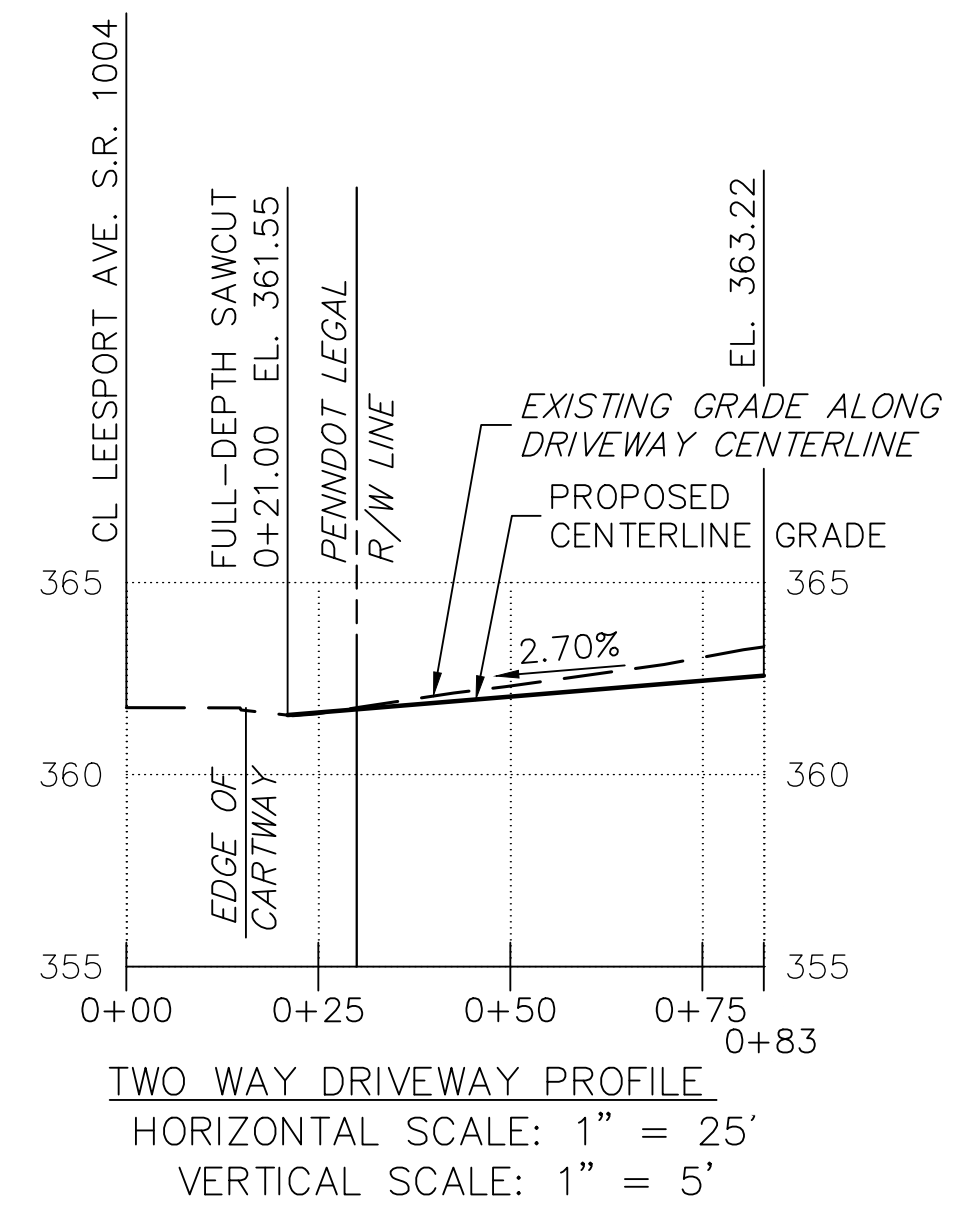
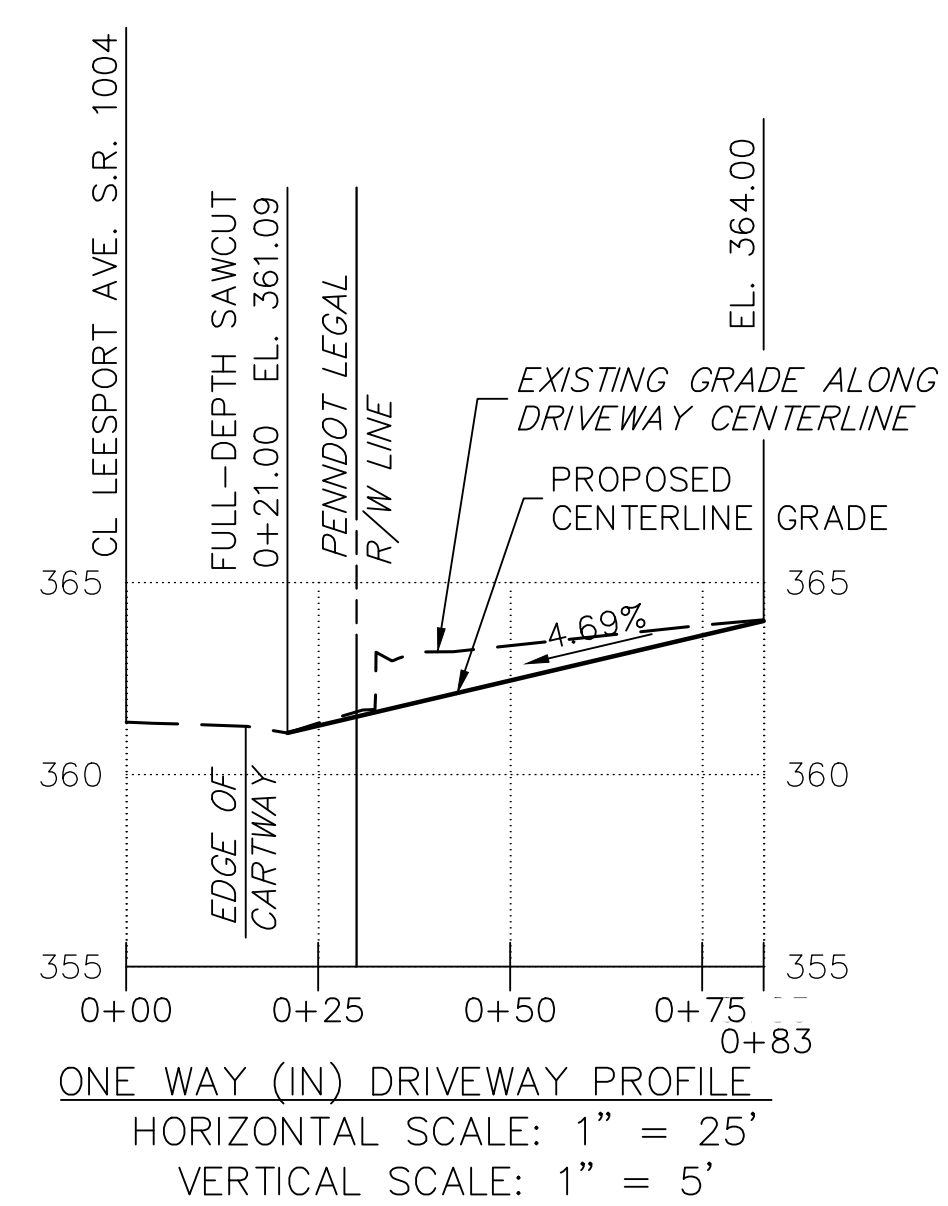
HOP APPLICATION NO. 191621

STATE ROUTE 1004 & LOW VOLUME DRIVEWAY  
 TRIPS = 120, VEHICLES = 60  
 SEG. 0040 OFFSET 0880

STATE ROUTE 1004 & LOW VOLUME DRIVEWAY  
 TRIPS = 120, VEHICLES = 60  
 SEG. 0040 OFFSET 1036



- 1 SAMS REAL ESTATE BUSINESS TRST
- 2 MUHLENBERG TOWNSHIP
- 3 MET ED C/O FIRST ENERGY SRVC CO TAX DPT
- 4 CHASE1 LP
- 5 NORTH READING PLAZA INV LP



**LEGEND**

	PROPERTY LINE		EXISTING PAVEMENT TO BE REMOVED
	EASEMENT LINE		EXISTING
	LEGAL RIGHT-OF-WAY LINE		PROPOSED
	CENTER OF ROAD		STORM SEWER & RIPRAP
	EXISTING EDGE OF PAVING		SANITARY SEWER LATERAL FM
	EXISTING SIGN		DOMESTIC WATER SERVICE LINE
	EXISTING STORM SEWER (SIZE AND MATERIAL)		FINISHED GROUND CONTOURS
	EXISTING STORM INLET		STORM SEWER UNDERDRAIN
	EXISTING CONCRETE STORM ENDWALL		SAN. SEWER LOW PRESSURE FORCE MAIN (BY OTHERS)
	EXISTING STORM SWR MANHOLE		
	EXISTING WATERLINE		
	EXISTING SAN. SWR LINE		
	EXISTING UTILITY POLE		
	EXISTING CHAINLINK FENCE		
	PROJECT BENCHMARK (MAG NAIL IN POLE, EL.)		



PREPARED BY:  
 SYSTEMS DESIGN ENGINEERING, INC.  
 1032 JAMES DR.  
 LEESPORT, PA 19533



SR 1004  
 PROPOSED CONDITIONS PLAN

CRAIG MOMOSE, P.E.  
 DATE: 9/12/2019

**GENERAL NOTES - CHAPTER 6**

TABLE 601 - FIRE-RESISTIVE RATING REQUIREMENTS  
TYPE IIB CONSTRUCTION HAS A FIRE RESISTIVE RATING OF 0

SECTION 602.2 - TYPE II  
EXTERIOR WALLS AND INTERIOR WALL SHALL BE OF NONCOMBUSTIBLE MATERIAL, EXCEPT AS PERMITTED IN SECTION 603.

TABLE 602 - FIRE-RESISTIVE RATING REQUIREMENTS FOR EXTERIOR WALLS  
S1 OCCUPANCY, TYPE II-B, WITH A FIRE SEPARATION DISTANCE GREATER THAN 30'-0" REQUIRES NO FIRE RATING.

**GENERAL NOTES - CHAPTER 9**

SECTION 901.6.1 - AUTOMATIC SPRINKLER SYSTEMS  
SHALL BE MONITORED BY AND APPROVED SUPERVISING STATION.

SECTION 901.6.2 - FIRE ALARM SYSTEMS  
SHALL BE MONITORED BY AND APPROVED SUPERVISING STATION.

SECTION 903.2.9 - GROUP 'S1& S2'  
AUTOMATIC SPRINKLER SYSTEMS SHALL BE PROVIDED THROUGHOUT ALL FIRE AREAS GREATER THAN 12,000 SF.

SECTION 903.3.1.1 - NFPA 13 SPRINKLER SYSTEMS  
AUTOMATIC SPRINKLER SYSTEMS SHALL BE FURNISHED AND INSTALLED IN ACCORDANCE WITH NFPA 13, EXCEPT AS PROVIDED IN SECTION 903.3.1.1.1.

SECTION 903.4 - SPRINKLER SYSTEM SUPERVISION AND ALARMS  
VALVES CONTROLLING THE WATER SUPPLY, PUMPS, TANKS, WATER LEVELS & TEMPERATURES, CRITICAL AIR PRESSURES AND WATER FLOW SWITCHES SHALL BE ELECTRICALLY SUPERVISED BY A LISTED FIRE ALARM CONTROL UNIT.

SECTION 903.4.2 - ALARMS  
APPROVED AUDIBLE DEVICES SHALL BE CONNECTED TO THE SPRINKLER SYSTEM. SUCH SPRINKLER WATER FLOW ALARM DEVICES SHALL BE ACTIVATED BY WATER FLOW EQUIVALENT TO THE FLOW OF A SINGLE SPRINKLER OF THE SMALLEST ORIFICE SIZE INSTALLED IN THE SYSTEM. ALARM DEVICES SHALL BE PROVIDED ON THE EXTERIOR OF THE BUILDING IN AN APPROVED LOCATION. ACTUATION OF THE SPRINKLER SYSTEM SHALL ACTUATE THE BUILDING FIRE ALARM SYSTEM.

SECTION 912.5 - SIGNS  
A METAL SIGN WITH RAISED LETTERS AT LEAST ONE INCH HIGH SHALL BE MOUNTED TO ALL FIRE DEPARTMENT CONNECTIONS SERVICING AUTOMATIC SPRINKLERS OR FIRE PUMP CONNECTIONS. SUCH SIGNS SHALL READ: AUTOMATIC SPRINKLERS, TEST CONNECTION, OR SOME COMBINATION THEREOF.

SECTION 903.4.1 - MONITORING  
ALARM, SUPERVISORY AND TROUBLE SIGNALS SHALL BE DISTINCTLY DIFFERENT AND SHALL BE AUTOMATICALLY TRANSMITTED TO AN APPROVED SUPERVISING STATION.

SECTION 904 - ALTERNATIVE AUTOMATIC FIRE-EXTINGUISHING SYSTEMS  
REFER TO SPECIFICATION AND PLANS FOR LOCATIONS AND REQUIREMENTS FOR ALTERNATE EXTINGUISHING SYSTEMS UTILIZED.

SECTION 906.1 - PORTABLE FIRE EXTINGUISHERS  
PORTABLE FIRE EXTINGUISHERS SHALL BE INSTALLED IN THE FOLLOWING LOCATIONS.  
1. IN ALL GROUP A, B, E, F, H, I, M, R-1, R-2, R-4, AND S OCCUPANCIES.  
2. WITHIN 30 FEET OF COMMERCIAL COOKING EQUIPMENT  
3. IN AREAS WHERE FLAMMABLE OR COMBUSTIBLE LIQUIDS ARE STORED, USED OR DISPENSED.  
4. ON EACH FLOOR OF STRUCTURES UNDER CONSTRUCTION, EXCEPT GROUP R-3 OCCUPANCIES, IN ACCORDANCE WITH SECTION 3315.1 IFC  
5. WHERE REQUIRED BY TABLE 906.1.  
6. SPECIAL HAZARD AREAS, INCLUDING BUT NOT LIMITED TO LABORATORIES, COMPUTER ROOMS AND GENERATOR ROOMS, WHERE REQUIRED BY THE FIRE CODE OFFICIAL.

SECTION 907 - FIRE ALARM AND DETECTION SYSTEMS  
SECTION 907.1.2 - FIRE ALARM SHOP DRAWINGS  
SHOP DRAWING FOR FIRE ALARM SYSTEMS SHALL BE SUBMITTED FOR REVIEW AND APPROVAL PRIOR TO SYSTEM INSTALLATION; REFER TO DRAWINGS AND SPECIFICATION.

SECTION 912 - FIRE DEPARTMENT CONNECTIONS  
FIRE DEPARTMENT CONNECTIONS SHALL BE LOCATED SO THAT FIRE APPARATUS AND HOSE HOSES CONNECTED TO SUPPLY THE SYSTEM WILL NOT OBSTRUCT ACCESS TO THE BUILDING AND BE APPROVED BY THE FIRE CHIEF.

**GENERAL NOTES - CHAPTER 10**

SECTION 1004.1 - DESIGN OCCUPANT LOAD  
REFER TO FIRST OCCUPANCY AND EGRESS PLANS.

SECTION 1004.3 - POSTING OF OCCUPANT LOAD  
ROOMS OR SPACES WITH AN ASSEMBLY OCCUPANCY SHALL HAVE THE OCCUPANT LOAD OF THE ROOM OR SPACE POSTED IN A CONSPICUOUS PLACE NEAR THE MAIN EXIT FROM THE SPACE.

SECTION 1005.1 - MINIMUM REQUIRED EGRESS WIDTH  
TOTAL MEANS OF EGRESS SHALL NOT BE LESS THAN THE TOTAL OCCUPANT LOAD SERVICED BY THE MEANS OF EGRESS MULTIPLIED BY:  
0.2" PER OCCUPANT FOR OTHER EGRESS COMPONENTS

SECTION 1008.1 - ILLUMINATION REQUIRED  
THE MEANS OF EGRESS, INCLUDING THE EXIT DISCHARGE, SHALL BE ILLUMINATED AT ALL TIMES THE BUILDING SPACE SERVED BY THE MEANS OF EGRESS IS OCCUPIED, AND SUPPLIED WITH EMERGENCY POWER.

SECTION 1008.1 - ACCESSIBLE MEANS OF EGRESS REQUIRED  
ACCESSIBLE MEANS OF EGRESS ARE INDICATED ON THE OCCUPANCY AND EGRESS PLANS TO MEET THE INTENT OF THE CODE.

SECTION 1010.1.2 - DOOR SWING  
DOORS SHALL SWING IN THE DIRECTION OF TRAVEL WHERE SERVING AN OCCUPANT LOAD OF 50 OR MORE PERSONS.

SECTION 1013 - EXIT SIGNS  
APPROVED EXIT SIGNS SHALL BE VISIBLE FROM ANY DIRECTION OF EGRESS TRAVEL. INDICATE THE DIRECTION OF EGRESS TRAVEL, AND NO POINT IN AN EXIT ACCESS CORRIDOR OR PASSAGEWAY IS MORE THAN 100'-0" FROM THE NEAREST VISIBLE SIGN. EXIT SIGNS SHALL BE INTERNALLY OR EXTERNALLY ILLUMINATED FOR MINIMUM OF 90 MIN.

SECTION 1013.4 - TACTILE EXIT SIGNS  
TACTILE EXIT SIGNS ARE PROVIDED

SECTION 1006 - EXITS AND EXIT ACCESS DOORWAYS  
TWO EXITS SHALL BE PROVIDED WHEN THE OCCUPANT LOAD OF A SPACE EXCEEDS 49 PEOPLE, THE COMMON PATH OF EGRESS TRAVEL EXCEEDS 75'-0", AND IN BOILER ROOMS.

SECTION 1006.2.1 - COMMON PATH OF EGRESS TRAVEL  
THE COMMON PATH OF EGRESS TRAVEL SHALL NOT EXCEED 75'-0".

TABLE 1006.3.1 - MINIMUM NUMBER OF EXITS FOR OCCUPANT LOAD  
1 - 500 = 2 PER STORY  
501 - 1000 = 3 PER STORY

SECTION 1017 - EXIT ACCESS TRAVEL DISTANCE  
S1 OCCUPANCY WITH SPRINKLER SYSTEM SHALL NOT EXCEED 250'-0" TRAVEL DISTANCE ON EACH STORY TO AN EXIT OR EXIT STAIRWAY.

SECTION 1020.4 - DEAD ENDS  
DEAD ENDS IN CORRIDORS SHALL NOT EXCEED 50'-0" IN LENGTH FOR GROUP E OCCUPANCY BUILDINGS WITH AN AUTOMATIC SPRINKLER SYSTEM.

TABLE 1020.1 - CORRIDOR FIRE-RESISTANCE RATING  
B & S OCCUPANCY WITH GREATER THAN 30 OCCUPANTS AND WITH A SPRINKLER SYSTEM CORRIDORS DO NOT REQUIRE FIRE RATING.

SECTION 1020.4 - DEAD ENDS  
DEAD ENDS IN CORRIDORS SHALL NOT EXCEED 20'-0" IN LENGTH FOR GROUP S1 NON SPRINKLER OCCUPANCY BUILDINGS.

SECTION 1026 - HORIZONTAL EXITS  
HORIZONTAL EXITS SHALL NOT SERVE AS THE ONLY EXIT FROM A PORTION OF THE BUILDING AND WHERE TWO OR MORE EXITS ARE REQUIRED, NOT MORE THAN ONE-HALF OF THE EXITS SHALL BE HORIZONTAL EXITS.

SECTION 1028 - EXIT DISCHARGE  
EXIT DISCHARGE SHALL BE DIRECTLY TO THE EXTERIOR OF THE BUILDING AND DIRECTLY TO GRADE.

SECTION 1029.8 - COMMON PATH OF EGRESS TRAVEL  
SHALL NOT EXCEED 30'-0" FROM ANY SEAT TO A POINT WHERE AN OCCUPANT HAS A CHOICE OF 2 PATHS.

**GENERAL NOTES - CHAPTER 11**

SECTION 1101 - GENERAL  
BUILDING IS DESIGNED TO MEET ACCESSIBILITY REQUIREMENTS FOR ACCESS TO ALL WORK AREAS AND COMMON USE AREAS, PER CHAPTER 11 & ANSI A117.1-2003.

SECTION 1104.1 - SITE ARRIVAL POINTS  
ACCESSIBLE ROUTES WITHIN THE SITE SHALL BE PROVIDED FROM ACCESSIBLE PARKING.

SECTION 1105 - ACCESSIBLE ENTRANCES  
AT LEAST 60% OF ALL PUBLIC ENTRANCES SHALL BE ACCESSIBLE.

SECTION 1106 - PARKING AND PASSENGER LOADING FACILITIES  
WHERE PARKING IS PROVIDED, ACCESSIBLE PARKING SHALL BE PER TABLE 1106.1, 51-75 PARKING SPACES PROVIDED REQUIRE MIN. 2 ACCESSIBLE SPACES. FOR EVERY 6, OR FRACTION OF 6, ACCESSIBLE PARKING SPACES. AT LEAST ONE SHALL BE A VAN-ACCESSIBLE SPACE. ACCESSIBLE PARKING SPACES SHALL BE LOCATED ON THE SHORTEST ACCESSIBLE ROUTE OF TRAVEL TO AN ACCESSIBLE BUILDING ENTRANCE.

SECTION 1109 - COMMON USE FACILITIES  
TOILET ROOMS AND BATHING FACILITIES SHALL BE ACCESSIBLE. 50% OF DRINKING FOUNTAINS ON EACH FLOOR SHALL BE ACCESSIBLE. 5%, BUT NOT LESS THAN ONE OF EACH TYPE OF LOCKER SHALL BE ACCESSIBLE.

SECTION 1111 - SIGNAGE  
REQUIRED ACCESSIBLE ELEMENTS SHALL BE IDENTIFIED BY THE INTERNATIONAL SYMBOL OF ACCESSIBILITY; REFER TO SIGN TYPES ON A-20.

**GENERAL NOTES - CHAPTER 17**

AS PART OF THE PROJECT, THE OWNER WILL BE HIRING A THIRD PARTY INSPECTION AGENCY TO WORK WITH THE CONTRACTORS IN PROVIDING THE FOLLOWING INFORMATION AS REQUIRED BY THE CODE AND THE PROJECT DOCUMENTS, AS FOLLOWS:

SECTION 1701.1 - STATEMENT OF SPECIAL INSPECTION  
A STATEMENT OF SPECIAL INSPECTIONS SHALL BE PREPARED AND SUBMITTED TO THE BUILDING CODE OFFICIAL BY A THIRD PARTY AGENCY HIRED BY THE OWNER.

SECTION 1704.1.2 - REPORT REQUIREMENT  
THE FOLLOWING COMPONENTS OF THE PROPOSED WORK SCOPE SHALL BE PERIODICALLY INSPECTED BY THE DESIGN PROFESSIONAL, CONTRACTOR OR A THIRD PARTY INSPECTION AGENCY, AS THE PROGRESS OF THE WORK DICTATES. INSPECTION REPORTS SHALL BE FURNISHED TO THE BUILDING CODE OFFICIAL AS THEY ARE PERFORMED AND INDICATE COMPLIANCE OR DISCREPANCIES WITH THE CONSTRUCTION DOCUMENTS, PER SECTION 1704.1.2.

SECTION 1704.2.2 - FABRICATOR APPROVAL  
THIS SECTION STATES THAT SPECIAL INSPECTIONS ARE NOT REQUIRED UPON REVIEW OF THE FABRICATOR'S WRITTEN PROCEDURAL AND QUALITY CONTROL MANUALS AND PERIODIC AUDITING OF FABRICATION PRACTICES BY AN APPROVED SPECIAL INSPECTION AGENCY. AT COMPLETION OF FABRICATION, THE FABRICATOR SHALL SUBMIT CERTIFICATE TO THE B.C.O. STATING THAT THE WORK WAS PERFORMED IN ACCORDANCE WITH THE APPROVED CONSTRUCTION DOCUMENTS.

SECTION 1704.3 - STEEL CONSTRUCTION  
SPECIAL INSPECTIONS FOR STEEL ELEMENTS OF THE BUILDING SHALL BE AS REQUIRED BY SECTION 1704.3 & TABLE 1704.3 AS APPLICABLE TO THE PROJECT, INCLUDING WELDING, STRUCTURAL STEEL, COOL FORMED STEEL, REINFORCING STEEL AND HIGH-STRENGTH BOLTS THROUGH PERIODIC OR CONTINUOUS MONITORING, AS REQUIRED. SPECIAL INSPECTOR SHALL PERFORM INSPECTION OF THE STEEL FRAME TO VERIFY COMPLIANCE WITH THE CONSTRUCTION DOCUMENTS.

SECTION 1704.4 - CONCRETE CONSTRUCTION  
SPECIAL INSPECTIONS FOR CONCRETE CONSTRUCTION OF THE BUILDING SHALL BE AS REQUIRED BY SECTION 1704.4 & TABLE 1704.4 AS APPLICABLE TO THE PROJECT.

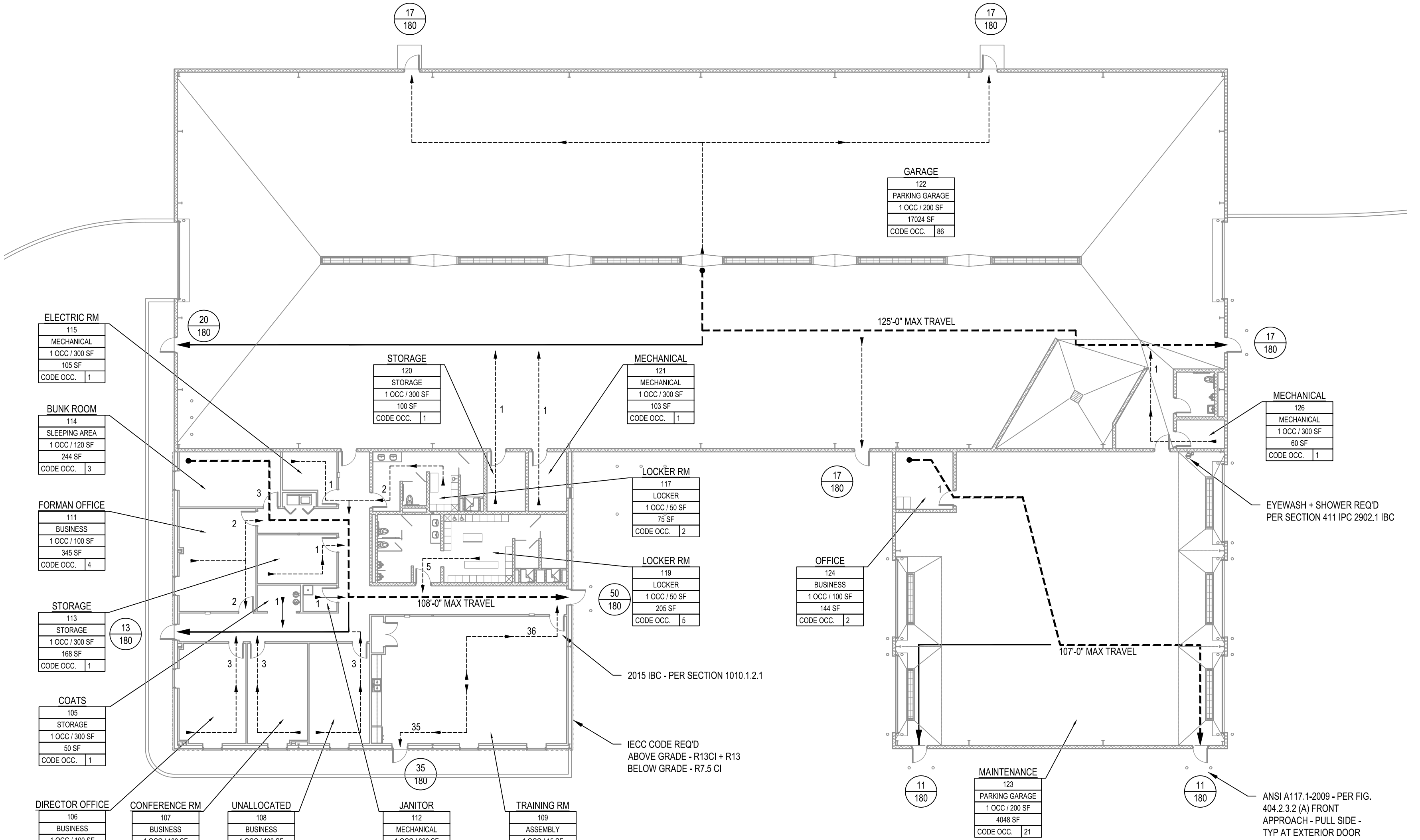
SECTION 1704.3 - STATEMENT OF SPECIAL INSPECTIONS  
THE OWNER'S THIRD PARTY INSPECTION AGENCY SHALL PREPARE A STATEMENT OF SPECIAL INSPECTION PER 1704.3, 1704.3.1, 1705.1, AS APPLICABLE TO THE PROJECT.

SECTION 1704.4 - CONTRACTOR RESPONSIBILITY  
EACH CONTRACTOR RESPONSIBLE FOR THE CONSTRUCTION OF A MAIN WIND- OR SEISMIC-FORCE RESISTING SYSTEM, DESIGNATED WIND- OR SEISMIC-FORCE RESISTING COMPONENT LISTED IN THE STATEMENT OF SPECIAL INSPECTIONS SHALL SUBMIT A WRITTEN STATEMENT OF RESPONSIBILITY TO THE BUILDING CODE OFFICIAL AND OWNER PRIOR TO COMMENCEMENT OF WORK ON THE SYSTEM OR COMPONENT. THE CONTRACTOR'S STATEMENT SHALL CONTAIN ACKNOWLEDGMENT OF THE AWARENESS OF THE SPECIAL REQUIREMENTS CONTAINED IN THE STATEMENT OF SPECIAL INSPECTION.

SECTION 1705.4 - MASONRY CONSTRUCTION  
SPECIAL INSPECTIONS FOR CONCRETE CONSTRUCTION OF THE BUILDING SHALL BE AS REQUIRED BY SECTION 1704.5 & TABLE 1704.5.1 AS APPLICABLE TO THE PROJECT. OCCUPANCY CATEGORY FOR SITE IS OCC. CAT. III.

SECTION 1705.6 - SOILS  
SPECIAL INSPECTIONS FOR EXISTING SITE SOIL CONDITIONS, FILL PLACEMENT AND LOAD-BEARING REQUIREMENTS OF THE SITE SHALL BE AS REQUIRED BY SECTION 1705.6 & TABLE 1705.6 AS APPLICABLE TO THE PROJECT.

SECTION 1706 - DESIGN STRENGTHS OF MATERIALS  
THE DESIGN STRENGTHS AND PERMISSIBLE STRESSES OF ANY STRUCTURAL MATERIAL IDENTIFIED BY A MANUFACTURER'S DESIGNATION IS OTHERWISE CONFIRMED TO THE SATISFACTION OF THE B.C.O., SHALL CONFORM TO THE SPECIFICATION AND METHODS OF ACCEPTED ENGINEERING PRACTICE.



**APPLICABLE CODES AS OF DATE OF DESIGN CONTRACT**

CODE	DATE
INTERNATIONAL BUILDING CODE	2015
INTERNATIONAL FIRE CODE	2015
INTERNATIONAL MECHANICAL CODE	2015
INTERNATIONAL PLUMBING CODE	2015
INTERNATIONAL ENERGY CONSERVATION CODE	2015
ICC ELECTRICAL CODE	2015
ICC ANSI A117.1	2009
LOCAL CODE AMENDMENTS	NONE

**MUHLENBERG TOWNSHIP**

INTERNATIONAL BUILDING CODE (2015)

(SECTION 305) USE GROUP CLASSIFICATION (SECTION 602) TYPE OF CONSTRUCTION	S1, S2, B
II-B	YES
TOTAL BUILDING AREA	27,120 SF

**TOTAL BUILDING AREA CALCULATION**

BUILDING	AREA (SF)
S1 BUILDING	4,340 SF
S2 BUILDING	17,600 SF
B BUILDING	5,180 SF
<b>TOTAL</b>	<b>27,120 SF</b>

**ALLOWABLE BUILDING HEIGHT AND AREA CALCULATIONS**

BUILDING HEIGHT AND AREA - REFERENCE SECTION 503

ALLOWABLE HEIGHT: 3 STORIES ABOVE GRADE PLANE - 75'-0" HIGH (TABLE 504.3)  
TABULAR AREA: A<sub>1</sub> - 70,000 SF (TABLE 506.2)

TYPE	TABULAR AREA (SF)
S1 SPRINKLERED - TABULAR AREA	70,000 SF

GRAND TOTAL ALLOWABLE BUILDING AREA & HEIGHT  
3 STORIES  
75'-0" ABOVE FINISHED GRADE  
BUILDING AREA - 70,000 SF

**LEGEND**

DESCRIPTION	SYMBOL
DOOR EGRESS TAG	---
ACTUAL EGRESS LOAD	###
EGRESS CAPACITY ALLOWED BY CODE	###
OCCUPANCY ROOM TAG (PER IBC 2009 TABLE 1004.1.1)	RM NAME
AREA OF SPACE IN SQUARE FEET	SF
OCCUPANT CAPACITY ALLOWED BY CODE	CODE OCC. ---
DESIGN OCCUPANT CAPACITY	DESIGN OCC. ---
EGRESS LINE TYPES	
PATH OF EGRESS	(NOTE 2)
MAXIMUM TRAVEL DISTANCE	(NOTE 2)

NOTE 1: (---) DEPICTS DIRECTION OF TRAVEL  
NOTE 2: MAXIMUM TRAVEL DISTANCE IN FEET

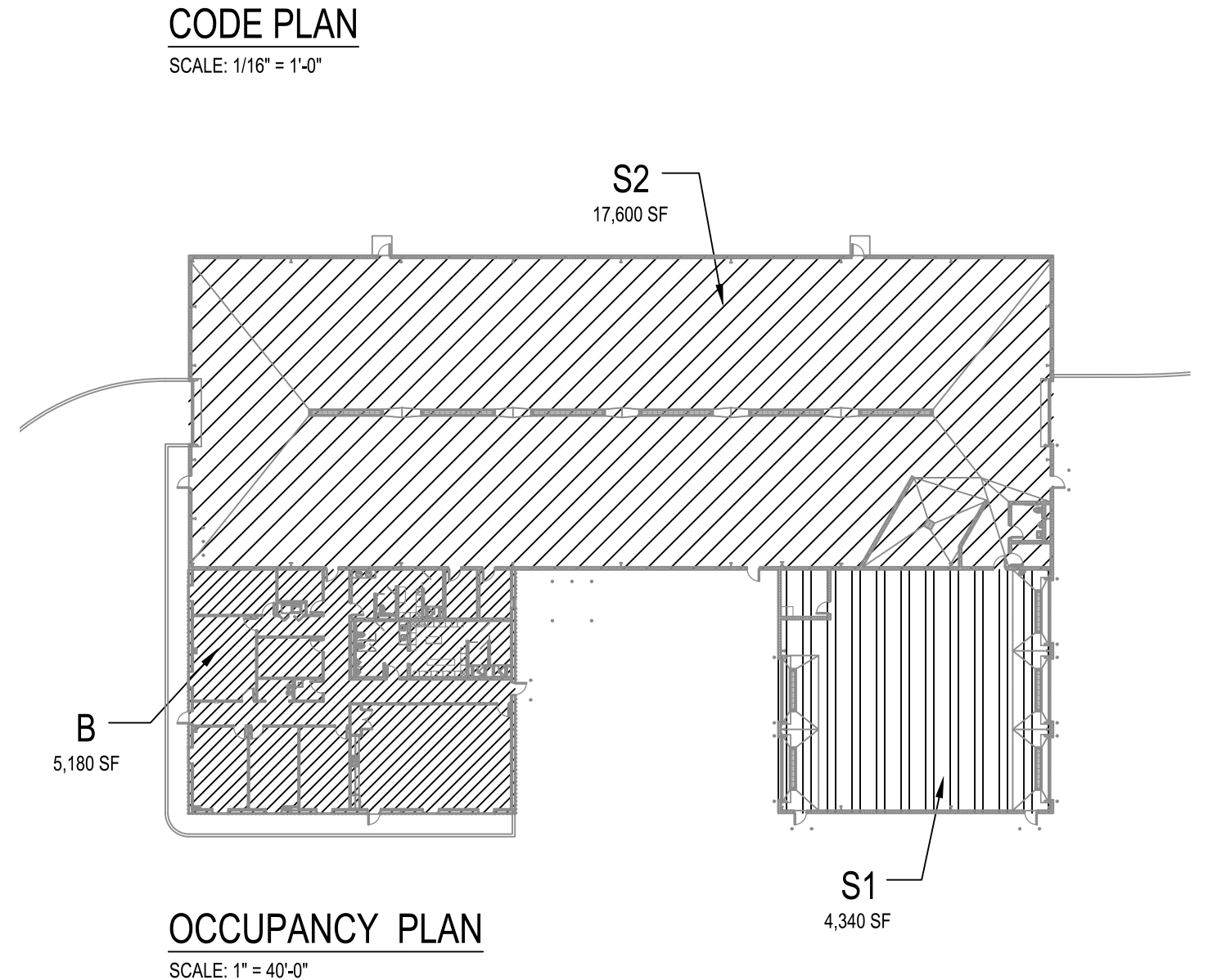
**PLUMBING FIXTURE COUNT - CHAPTER 29**

REFERENCE TABLE 2902.1 - MINIMUM NUMBER OF REQUIRED PLUMBING FIXTURES

THEORETICAL MAXIMUM PEAK CAPACITY = 234 OCCUPANTS

REQUIRED FIXTURES PER GENDER	WOMEN	MEN	UNISEX	TOTAL
WATER CLOSETS	2	2	-	4
LAVATORIES	2	2	-	4
DRINKING FOUNTAINS	-	-	-	1
EMERG SHOWER & EYEWASH STATION	-	-	-	1
SERVICE SINKS	-	-	-	1
<b>FIXTURES PROVIDED</b>				<b>TOTAL</b>
WATER CLOSETS				4
URINALS				3
LAVATORIES				5
DRINKING FOUNTAINS + BUBBLERS				2
SHOWERS				3
SERVICE SINK				1
EMERGENCY EYE WASH STATION				1
EMERGENCY SHOWER STATION				0

NOTES:  
1) NO MORE THAN 50% OF PROVIDED OR REQUIRED NUMBER OF WATER CLOSETS FOR MEN ARE URINALS  
2) DESIGN OCCUPANCY WAS USED TO DETERMINE REQUIRED FIXTURE COUNT. CODE OCCUPANCY WAS USED TO DETERMINE EXITING CAPACITY.



NO.	DATE	REVISION	BY
1	10/25/19	ISSUE FOR BID	JMS

**SYSTEMS DESIGN ENGINEERING, INC**  
1032 JAMES DR. LEESPORT, PA 19533  
PHONE: 610.916.8500 FAX: 610.916.8501

**MUHLENBERG TOWNSHIP PROPOSED PUBLIC WORKS BUILDING CODES AND LIFE SAFETY PLAN**

SITUATE IN BERKS COUNTY PENNSYLVANIA

DRAWN BY	CHECKED	APPROVED	CADD FILE NAME
AEM	AEM	AEM	G-001 - Code Plan.dwg

DATE: 08/23/19 SCALE: AS NOTED DRAWING NUMBER: D-19-0153-0144-G001

Copyright 2019, Systems Design Engineering, Inc. All Rights Reserved. Received from: 2019-08-23 10:44 AM G drawings based on mulligan G-001 - Code Plan.dwg - October 28, 2019 10:21 AM by James