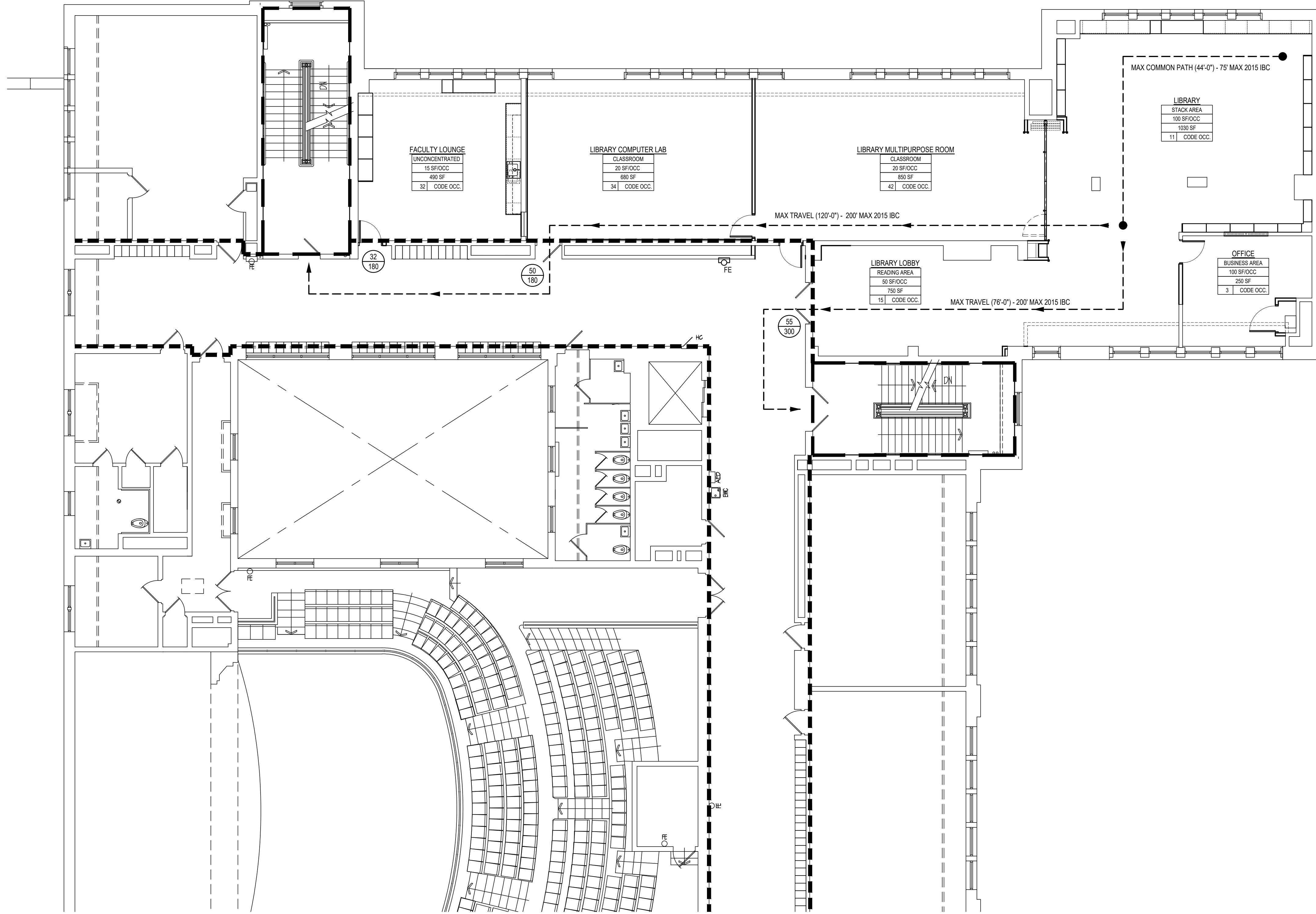


**PARTIAL SECOND FLOOR DEMO PLAN**  
SCALE: 1/8" = 1'-0"

- DEMOLITION NOTES:**
- \*\* G.C. SHALL COORDINATE DEMOLITION WITH ALL CONTRACTORS \*\*  
\*\* ALL DEMOLITION INDICATED ON THIS SHEET SHALL BE PERFORMED BY THE G.C. UNLESS OTHERWISE NOTED \*\*
- 4A REMOVE PORTION OF MASONRY WALL FOR NEW DOOR AND LINTEL
  - 4B INVESTIGATE CHASE, IF IT IS NOT FUNCTIONAL REMOVE UP TO STRUCTURE.
  - 6A REMOVE EXISTING CASEWORK
  - 6B REMOVE EXISTING BOOKCASE
  - 6A REMOVE EXISTING DOOR(S), FRAME(S) AND HARDWARE
  - 6B REMOVE EXISTING WINDOW
  - 6A REMOVE EXISTING CEILING SYSTEM AND ALL ASSOCIATED COMPONENTS
  - 6B REMOVE EXISTING CARPETING AND ALL ASSOCIATED COMPONENT INCLUDING COVE BASE.
  - 9C REMOVE EXISTING DISPLAY CASE AND ALL ASSOCIATED COMPONENT
  - 9D REMOVE AND RELOCATE FIRE EXTINGUISHER
  - 9E REMOVE PORTION OF EXISTING GYP WALL FOR NEW DOOR
  - 9F REMOVE EXISTING GYP WALL
  - 9C REMOVE EXISTING SOFFIT
  - 11A REMOVE EXISTING MARKERBOARD, ADHESIVE AND MOUNTING HARDWARE
  - 22 P.C. DEMO. (REFER TO MEP DEMO. DRAWINGS AND SPECIFICATIONS FOR ADDITIONAL INFO.)
  - 23 H.C. DEMO. (REFER TO MEP DEMO. DRAWINGS AND SPECIFICATIONS FOR ADDITIONAL INFO.)
  - 24 E.C. DEMO. (REFER TO MEP DEMO. DRAWINGS AND SPECIFICATIONS FOR ADDITIONAL INFO.)
- GENERAL DEMOLITION NOTES:**
- \*\* G.C. SHALL COORDINATE DEMOLITION WITH ALL CONTRACTORS \*\*  
\*\* ALL DEMOLITION INDICATED ON THIS SHEET SHALL BE PERFORMED BY THE G.C. UNLESS OTHERWISE NOTED \*\*
- A) DEMOLITION NOTED IS PROVIDED TO FURNISH AN UNDERSTANDING OF THE SCOPE OF WORK REQUIRED AND MAY NOT NECESSARILY BE INCLUSIVE OF ALL DEMOLITION REQUIRED FOR THE INCORPORATION OF NEW WORK. ALL DEMOLITION WORK REQUIRED TO ACCOMMODATE NEW CONSTRUCTION SHALL BE INCLUDED AS PART OF THE CONTRACT. CONTRACTOR SHALL REVIEW ALL CONSTRUCTION DOCUMENTS TO UNDERSTAND THE SCOPE OF DEMOLITION REQUIRED FOR NEW WORK. ALL DEMOLITION SHALL BE COORDINATED WITH ALL CONSTRUCTION DOCUMENTS REFER TO MEP DRAWINGS FOR ADDITIONAL MEP DEMOLITION REQUIREMENTS.
  - B) ALL REMAINING SURFACES TO BE EXPOSED AFTER DEMOLITION SHALL BE PATCHED, REPAIRED AND REFINISHED TO MATCH EXISTING ADJACENT FINISH OR NEW CONDITIONS. ALL REMAINING SURFACES TO BE CONCEALED BY NEW WORK SHALL BE PREPARED AS REQUIRED TO RECEIVE NEW WORK. REFER TO SPECIFICATIONS AND PRODUCT REQUIREMENTS FOR SPECIFIC CUTTING AND PATCHING METHODS REQUIRED FOR DEMOLITION WORK.
  - C) WHERE EQUIPMENT OR SYSTEMS ARE INDICATED FOR DEMOLITION, ALL PARTS AND ASSEMBLIES OF THE EQUIPMENT OR SYSTEMS SHALL BE REMOVED INCLUDING BLOCCING, SUPPORTS, HANGERS, ETC. REFER TO MEP DRAWINGS FOR ADDITIONAL INFORMATION FOR MEP DEMOLITION.
  - D) CONTRACTORS SHALL REVIEW ALL EXISTING CONDITIONS TO UNDERSTAND THE SCOPE OF THE WORK PRIOR TO SUBMITTING BIDS.
  - E) ALL DEMOLITION SHALL BE COORDINATED WITH PROJECT PHASING AND SCHEDULE. THE PROGRESS OF THE WORK SHALL BE CAREFULLY COORDINATED TO ENSURE ALL EXISTING SYSTEMS REMAIN OPERABLE DURING WORK.
  - F) LEGALLY DISPOSE OF ALL DEMOLITION DEBRIS OFF-SITE.
  - G) CONTRACTOR SHALL PROTECT ALL EXISTING FINISHES, EQUIPMENT, ETC. TO REMAIN. ANY DAMAGE SHALL BE REPAIRED AND RESTORED AT NO COST TO THE OWNER.



**PARTIAL SECOND FLOOR CODE PLAN**  
SCALE: 1/8" = 1'-0"

**GENERAL NOTES**

- WORST CASE CODE OCCUPANCY CALCULATIONS ARE USED TO DETERMINE ALL EGRESS AND EXITING CAPACITIES.
- DESIGN OCCUPANCY CALCULATIONS ARE BASED ON SEATING CAPACITIES USING FURNITURE COUNTS WHEN APPLICABLE. CLASSROOM OCCUPANCIES ARE BASED ON SEATING CAPACITIES AND HAVE THREE ADDITIONAL OCCUPANTS ADDED FOR A TEACHER AND TWO TEACHING ASSISTANTS.

**APPLICABLE CODES AS OF DATE OF DESIGN CONTRACT**

CODE	DATE
INTERNATIONAL BUILDING CODE	2015
INTERNATIONAL FIRE CODE	2015
INTERNATIONAL MECHANICAL CODE	2015
INTERNATIONAL PLUMBING CODE	2015
INTERNATIONAL ENERGY CONSERVATION CODE	2015
ICC ELECTRICAL CODE	2015
INTERNATIONAL EXISTING BUILDING CODE	2015
ICC ANS1 A117.1	2009
LOCAL CODE AMENDMENTS	NONE

**ROCKLAND STREET BUILDING**

IEBC REFERENCE INTERNATIONAL BUILDING CODE (2015)

(SECTION 305) USE GROUP CLASSIFICATION E  
(SECTION 602) TYPE OF CONSTRUCTION II-B  
SPRINKLERED NO

**IEBC 2015 - CHAPTER 504 - EXISTING BUILDING CODE**

**ALTERATION - LEVEL 2**

**SECTION 504.1**  
LEVEL 2 ALTERATIONS INCLUDE THE RECONFIGURATION OF SPACE, THE ADDITION OR ELIMINATION OF ANY DOOR OR WINDOW, THE RECONFIGURATION OR EXTENSION OF ANY SYSTEM OR THE INSTALLATION OF ANY ADDITIONAL EQUIPMENT.

**SECTION 504.2**  
LEVEL 2 ALTERATION SHALL COMPLY WITH THE PROVISIONS OF CHAPTER 7 FOR LEVEL 1 ALTERATIONS AS WELL AS THE PROVISIONS OF CHAPTER 8

**IBC 2015 - CHAPTER 10 - BUILDING CODE**

**SECTION 1016.2 EGRESS THROUGH INTERVENING SPACES**  
EGRESS FROM A ROOM OR SPACE SHALL NOT PASS THROUGH ADJOINING OR INTERVENING ROOMS OR AREAS, EXCEPT WHERE SUCH ADJOINING ROOMS OR AREAS AND THE AREA SERVED ARE ACCESSORY TO ONE OR THE OTHER, ARE NOT A GROUP H OCCUPANCY AND PROVIDE A DISCERNIBLE PATH OF EGRESS TRAVEL TO AN EXIT.

**LEGEND**

DESCRIPTION	SYMBOL
DOOR EGRESS TAG	---
ACTUAL EGRESS LOAD	####
EGRESS CAPACITY ALLOWED BY CODE	####
OCCUPANCY ROOM TAG	RM NAME RM NO. WAREHOUSE 500 SF OCC.
FLOOR AREA IN SQ. FT. PER OCCUPANT	---
FIRE RATING LINE TYPES	ONE HOUR RATING TWO HOUR RATING
EGRESS LINE TYPES	PATH OF EGRESS MAX TRAVEL DISTANCE

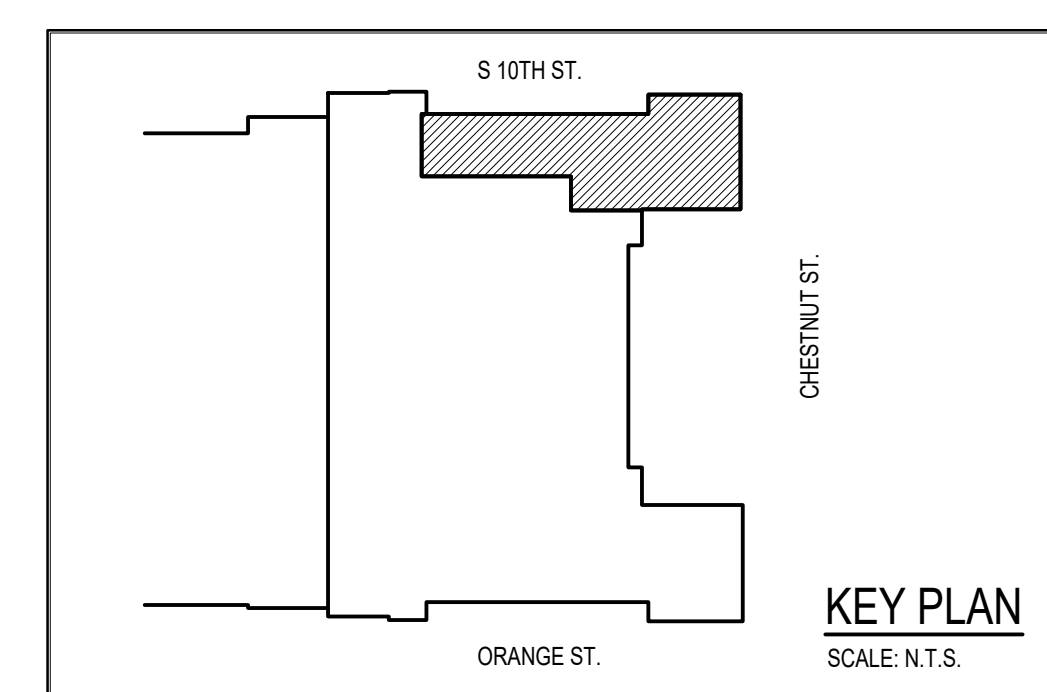
NOTE: ALL FIRE RATED BARRIERS, PARTITIONS, AND HORIZONTAL ASSEMBLIES SHALL BE IDENTIFIED PER SPECIFICATION SECTION 07 84 46 3.4 IDENTIFICATION AND IBC 2015 SECTION 703.7 MARKING AND IDENTIFICATION

NOTE 1: (▶) DEPICTS DIRECTION OF TRAVEL

NOTES:  
1. EGRESS PATHS SHOWN ARE THE LONGEST FROM EACH SPACE

NOTES:  
ALL NEW FIRE RATED BARRIERS, PARTITIONS, AND HORIZONTAL ASSEMBLIES SHALL BE IDENTIFIED PER SPECIFICATION SECTION 07 84 13, 07 84 43 3.4 IDENTIFICATION AND IBC 2015 SECTION 703.7 MARKING AND IDENTIFICATION

ALL FIRE RATINGS INDICATED ON THIS DRAWING SHALL BE FIRE BARRIERS.



**AEM ARCHITECTS INC.**  
3708 PERKINS AVENUE, READING, PA 19608-2785  
Phone: 610.779.3220 Fax: 610.779.9022 www.aem-arch.com

REVISIONS	BY

**CONSOLIDATED ENGINEERS**  
1022 James Drive  
Lansport, PA 15033  
Tel: 610-916-1600 Fax: 610-916-1610  
www.consolidatedengineers.com

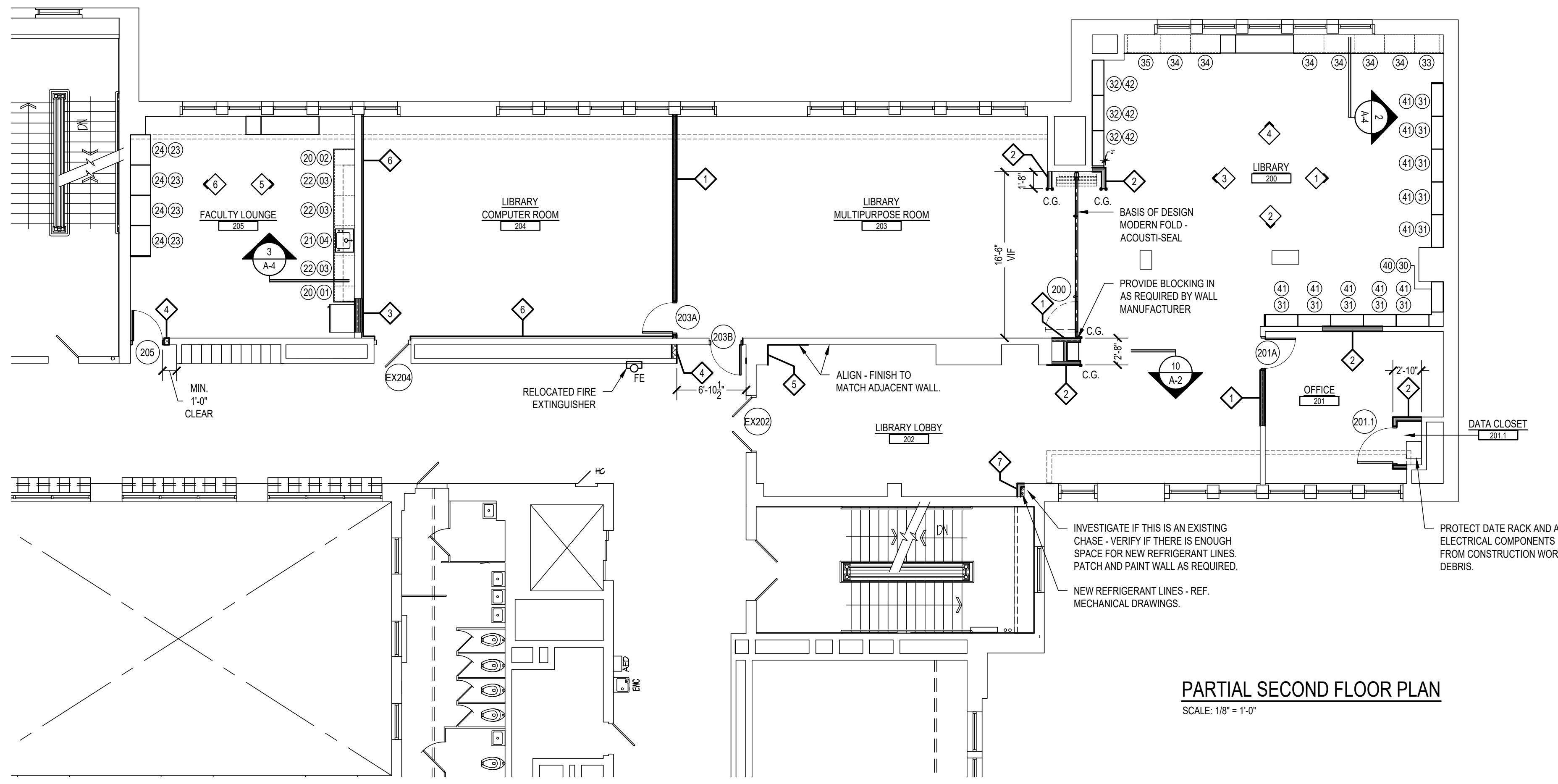
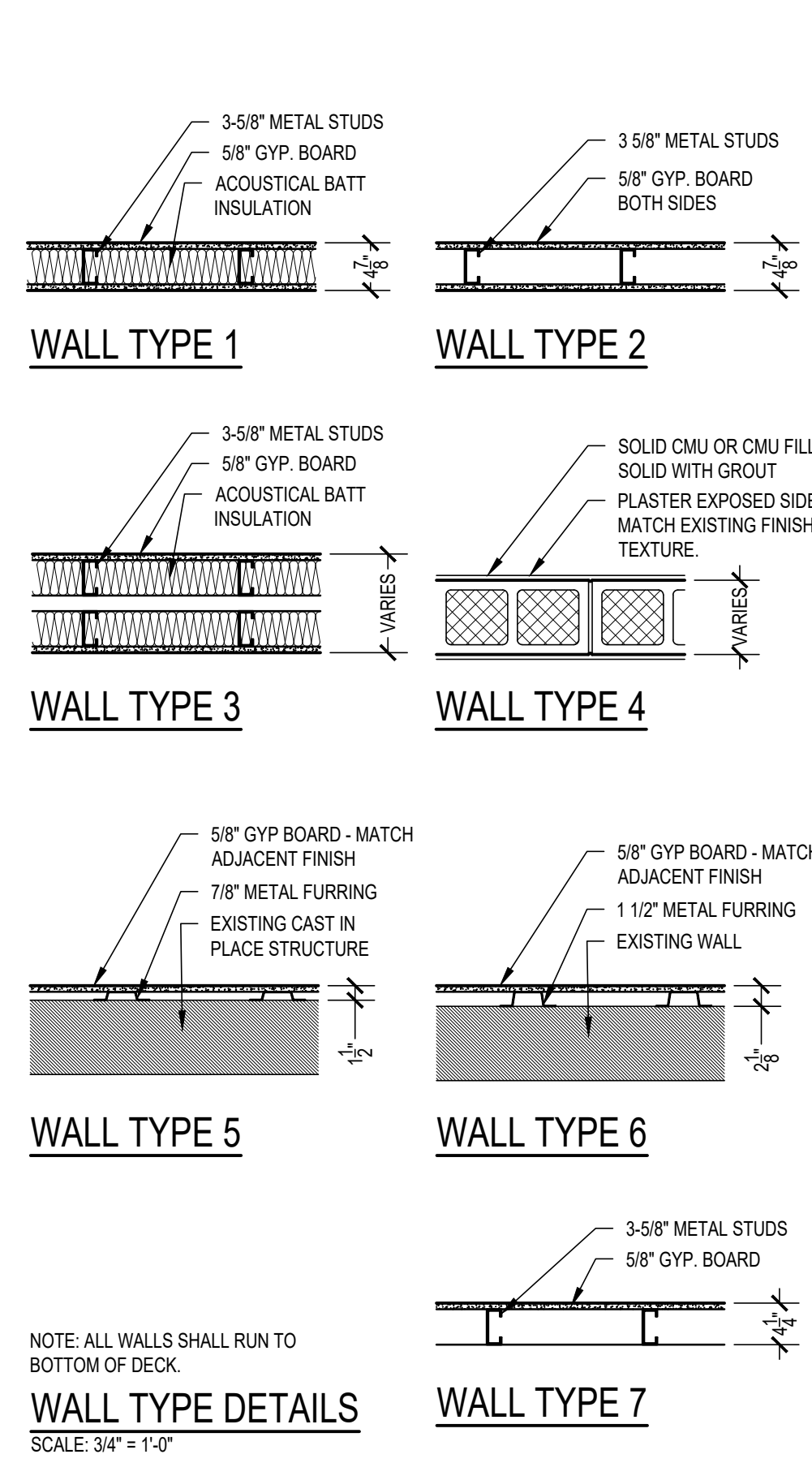
**SOUTHERN MIDDLE SCHOOL LIBRARY RENOVATIONS FOR THE READING SCHOOL DISTRICT**  
931 CHESTNUT ST., READING, PA 19602

**CODE AND DEMOLITION PLANS**

All DIMENSIONS and EXISTING CONDITIONS shall be CHECKED and VERIFIED by the CONTRACTOR at the SITE.

DRAWN	KDN
CHECKED	PML
DATE	02/16/2022
SCALE	AS NOTED
JOB NO.	2842-1
SHEET	

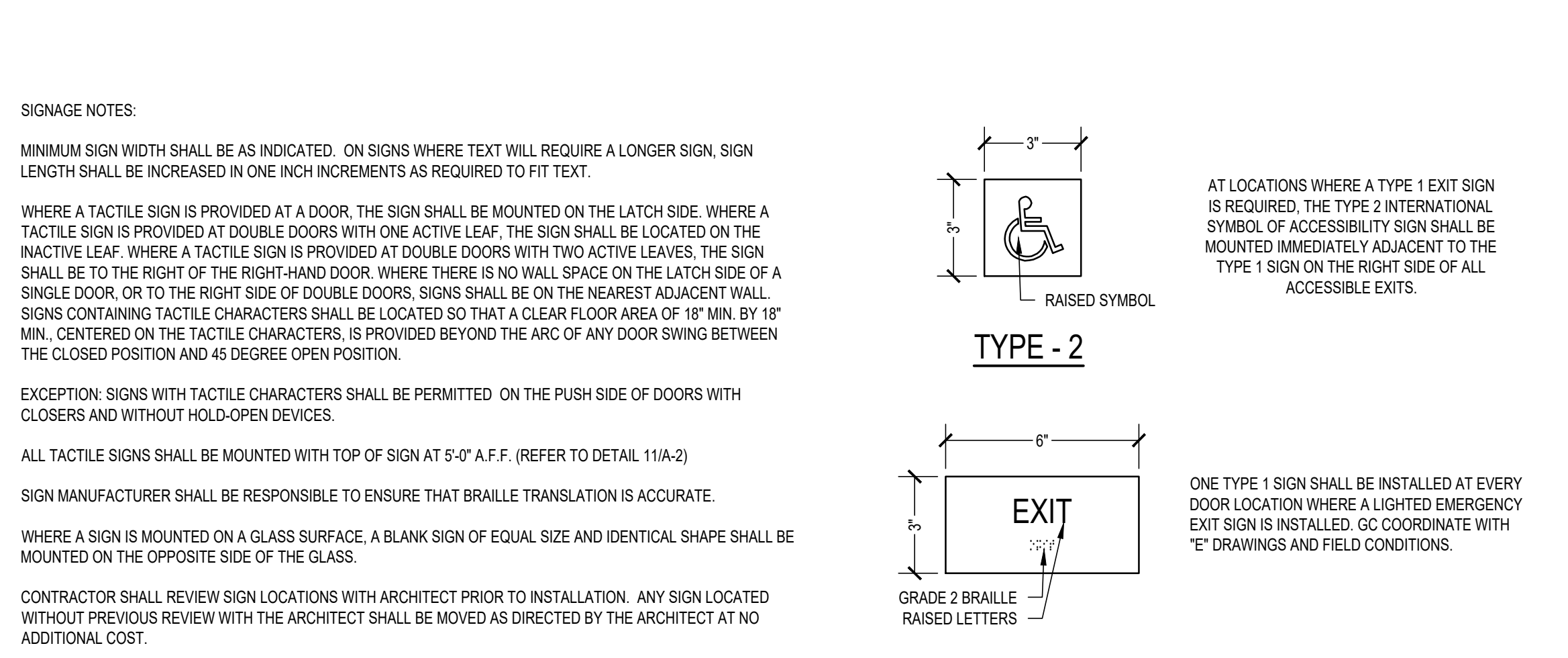
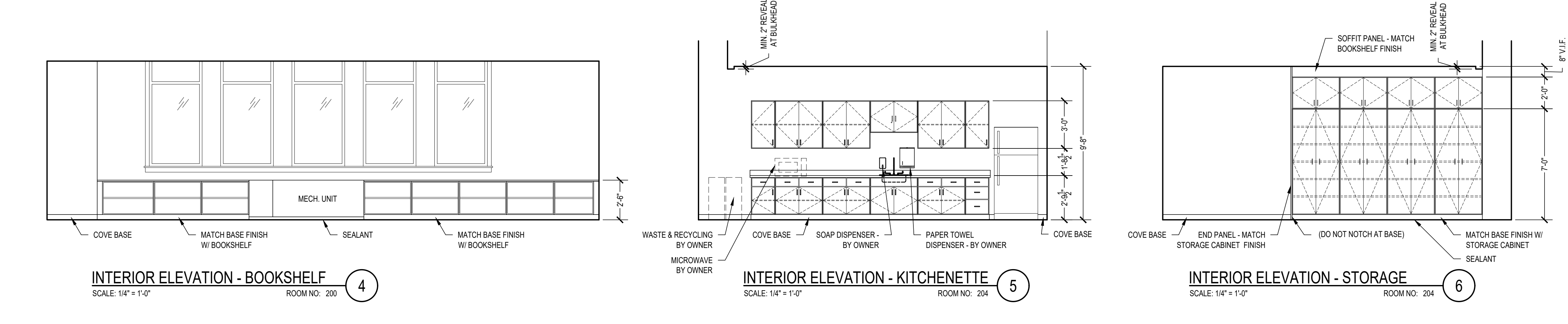
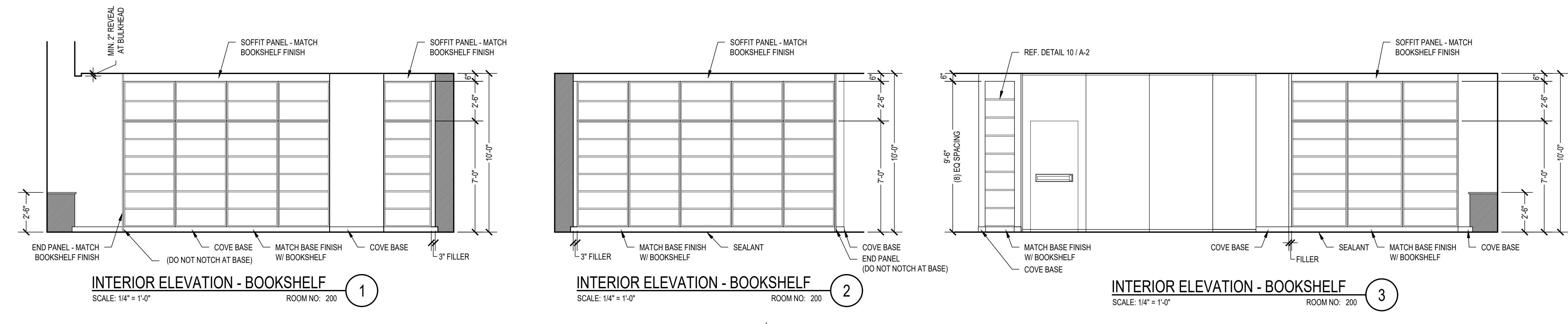
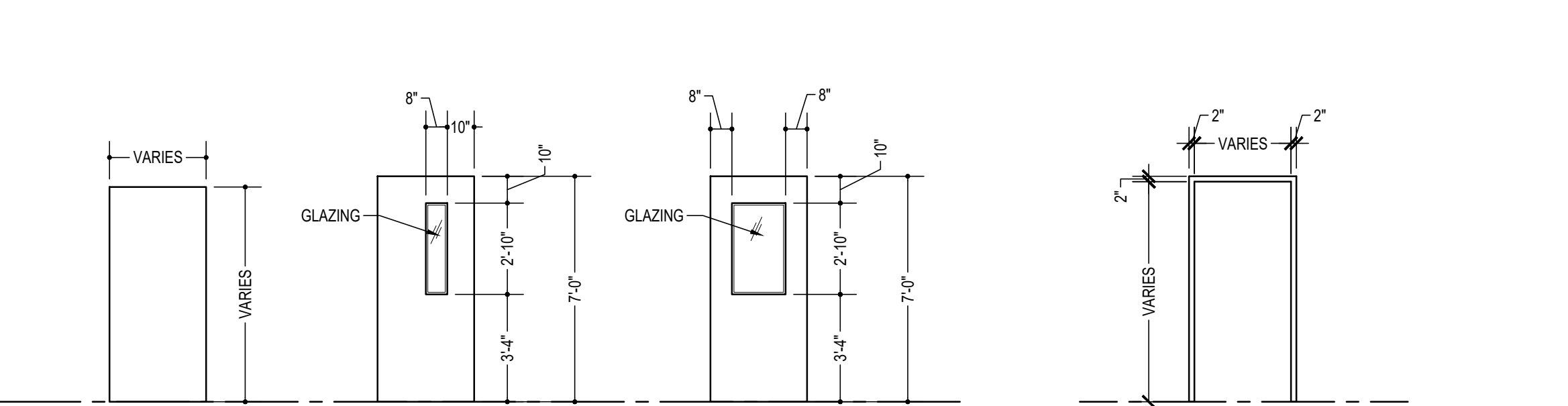
**A-1**



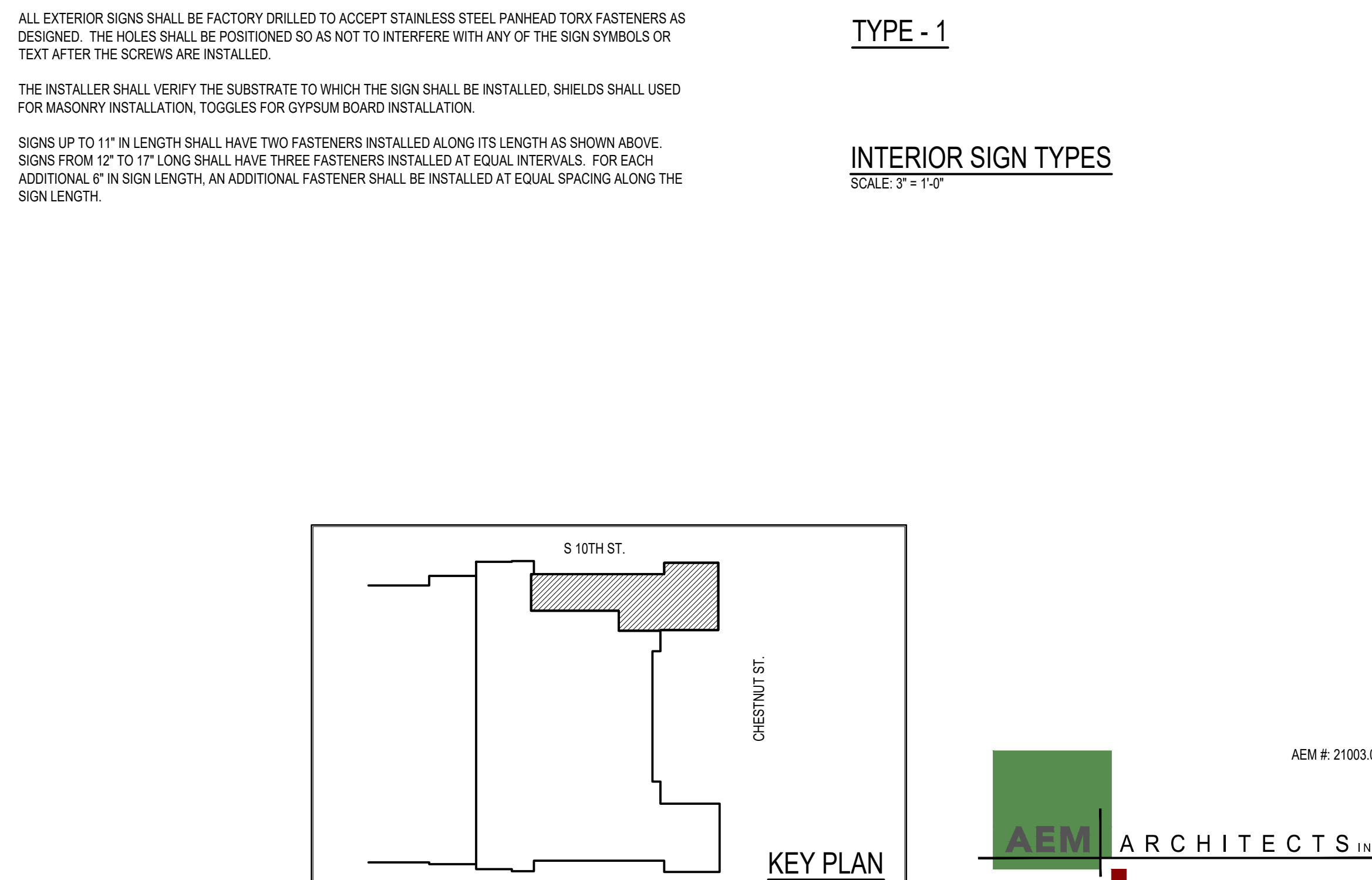
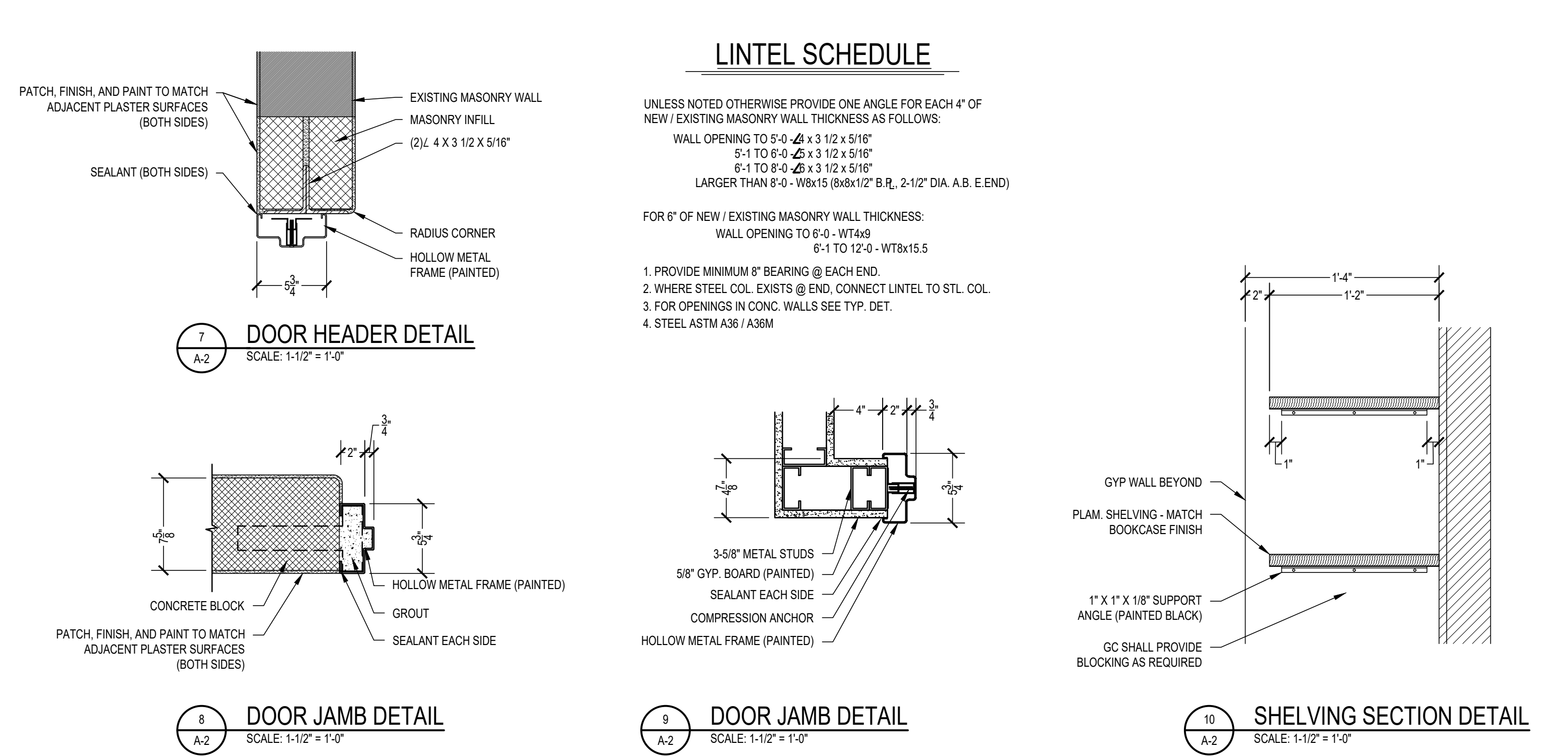
DOOR NUMBER	TYPE	MATERIAL	GLASS	FINISH	SIZE			FRAME				REMARKS	DOOR NUMBER				
					WIDTH	HEIGHT	THICKNESS	TYPE	MATERIAL	GLASS	FINISH			DETAIL			
200	-	-	-	-	3'-0"	7'-0"	-	-	-	-	-	-	-	PER OPERABLE WALL SYSTEM MANUFACTURER	200		
201A	F	WD	CL	FS	4'-0"	7'-0"	1-3/4"	HM-1	HM	-	P	9	-	-	3/4"	1	-
201B	G	WD	CL	FS	3'-0"	7'-0"	1-3/4"	HM-1	HM	-	P	9	-	-	3/4"	2	-
203A	F	WD	-	FS	3'-0"	7'-0"	1-3/4"	HM-1	HM	-	P	9	-	-	3/4"	3	-
203B	N2	WD	CCL	FS	3'-0"	7'-0"	1-3/4"	HM-1	HM	-	P	788	-	60 MIN	3/4"	4	-
204	N2	WD	CCL	FS	3'-0"	7'-0"	1-3/4"	HM-1	HM	-	P	788	-	60 MIN	3/4"	5	-

**DOOR SCHEDULE ABBREVIATIONS:**  
CL CLEAR LAMINATED  
CCL CLEAR CERAMIC LAMINATED

**GENERAL NOTES:**  
FIELD VERIFY DIMENSIONS OF ALL EXISTING OPENINGS PRIOR TO SUBMITTING SHOP DRAWINGS. INDICATE DEVIATIONS IN OPENING SIZE ON SHOP DRAWINGS.  
WHERE EXPANSION ANCHORS ARE USED, ANCHORS AND FRAMES SHALL BE GROUND SMOOTH, FILLED, PRIMED, AND PAINTED.



PLASTIC LAMINATE CASEWORK SCHEDULE						
TAG	MFR. NO	DESCRIPTION	SIZE		MFR.	NOTES
			W	H		
(01)	10270	BASE CABINET	18	32	24	SAF 3 DRAWERS
(02)	10422	BASE CABINET	18	32	24	SAF 1 DOOR LEFT HINGE, 1 DRAWER, 1 ADJ. SHELF
(03)	10432	BASE CABINET	36	32	24	SAF 2 DOORS, 2 DRAWERS, 1 ADJ. SHELF
(04)	10479	BASE - ADA SINK (SIDE APPROACH)	36	32	24	SAF 2 DOORS, 1 ADJ. SHELF
(20)	15121	WALL CABINET	18	36	14	SAF 1 DOOR LEFT HINGE, 1 ADJ. SHELF
(21)	15129	WALL CABINET	36	24	14	SAF 2 DOOR
(22)	15101	WALL CABINET	36	36	14	SAF 2 DOOR, 1 ADJ. SHELF
(23)	15129	WALL CABINET	36	24	24	SAF 2 DOOR
(24)	25129	TALL STORAGE	36	84	24	SAF 2 DOORS, 1 FIXED SHELF, 4 ADJUSTABLE SHELVES
(30)	25101	TALL SHELVING	36	84	14	SAF ADJUSTABLE SHELVING - MIN. 1" THICK
(31)	25101	TALL SHELVING	39	84	14	SAF ADJUSTABLE SHELVING - MIN. 1" THICK
(32)	25101	TALL SHELVING	42	84	14	SAF ADJUSTABLE SHELVING - MIN. 1" THICK
(33)	10101	BASE SHELVING	30	29	21	SAF ADJUSTABLE SHELVING - MIN. 1" THICK
(34)	10101	BASE SHELVING	36	29	21	SAF ADJUSTABLE SHELVING - MIN. 1" THICK
(35)	10101	BASE SHELVING	39	29	21	SAF ADJUSTABLE SHELVING - MIN. 1" THICK
(40)	13101	WALL STORAGE	36	30	14	SAF ADJUSTABLE SHELVING - MIN. 1" THICK
(41)	13101	WALL STORAGE	42	30	14	SAF ADJUSTABLE SHELVING - MIN. 1" THICK
(42)	13101	WALL STORAGE	49	30	14	SAF ADJUSTABLE SHELVING - MIN. 1" THICK



REVISIONS						
NO.	DATE	DESCRIPTION	BY	CHKD.	APP.	SCALE

REVISIONS						
NO.	DATE	DESCRIPTION	BY	CHKD.	APP.	SCALE

**CONSOLIDATED ENGINEERS**  
1022 James Drive  
Lansport, PA 15833  
Tel: 814-946-1600 Fax: 814-946-1610  
www.consolidatedengineers.com

**SOUTHERN MIDDLE SCHOOL LIBRARY RENOVATIONS FOR THE READING SCHOOL DISTRICT**  
931 CHESTNUT ST., READING, PA 19602

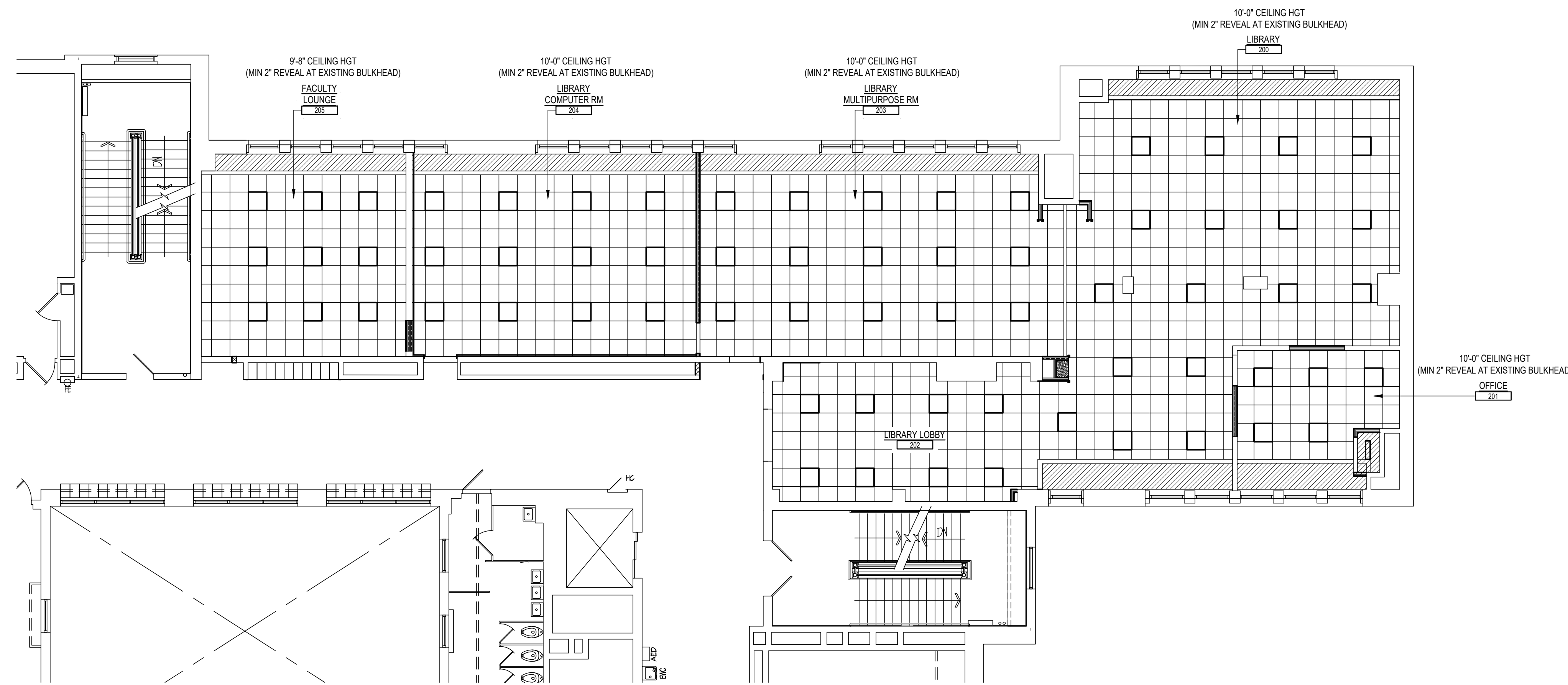
**PARTIAL SECOND FLOOR PLAN, ELEVATIONS AND DETAILS**

ALL DIMENSIONS AND EXISTING CONDITIONS shall be CHECKED and VERIFIED by the CONTRACTOR at the SITE.

DRAWN: KDN  
CHECKED: PML  
DATE: 02/18/2022  
SCALE: AS NOTED  
JOB NO.: 2842-1  
SHEET

**A-2**

**AEM ARCHITECTS INC.**  
3708 PERKINS AVENUE, READING, PA 19608-2785  
Phone: 610-779-3220 Fax: 610-779-9022 www.aem-arch.com

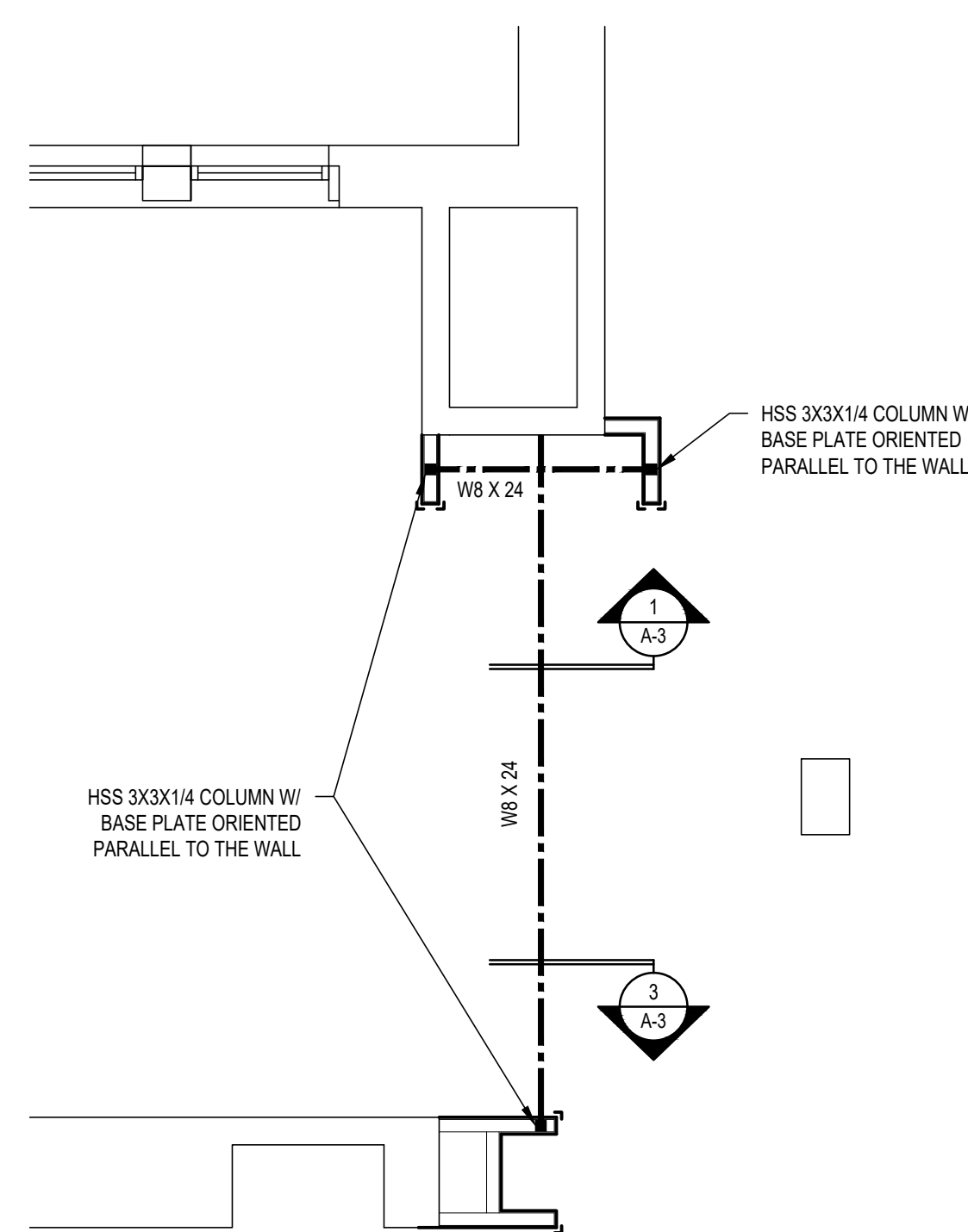


**SECOND FLOOR REFLECTED CEILING PLAN**  
SCALE: 1/8" = 1'-0"

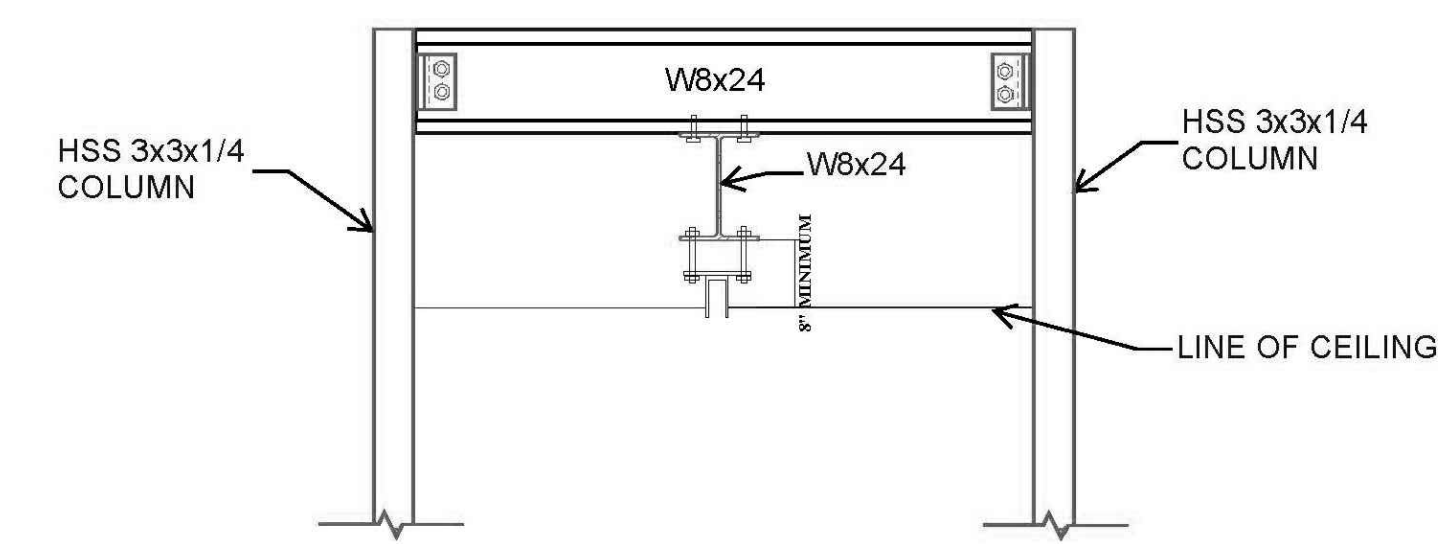
CEILING TYPE LEGEND	
SYMBOL	DESCRIPTION
	2' X 2' ACOUSTICAL CEILING TILE
	GYP CEILING
	EXISTING CEILING TO REMAIN
	WINDOW WELL (PATCH HOLES & PAINT)

NOTES:

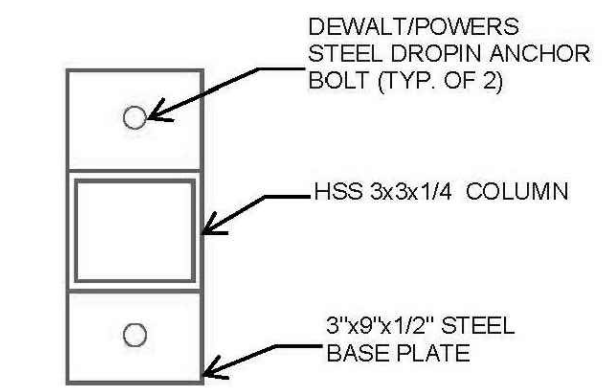
1. CEILING LAYOUT SHALL BE ADJUSTED TO ACCOMMODATE LIGHTING LAYOUT TO BE PROVIDED BY EC DURING CONSTRUCTION



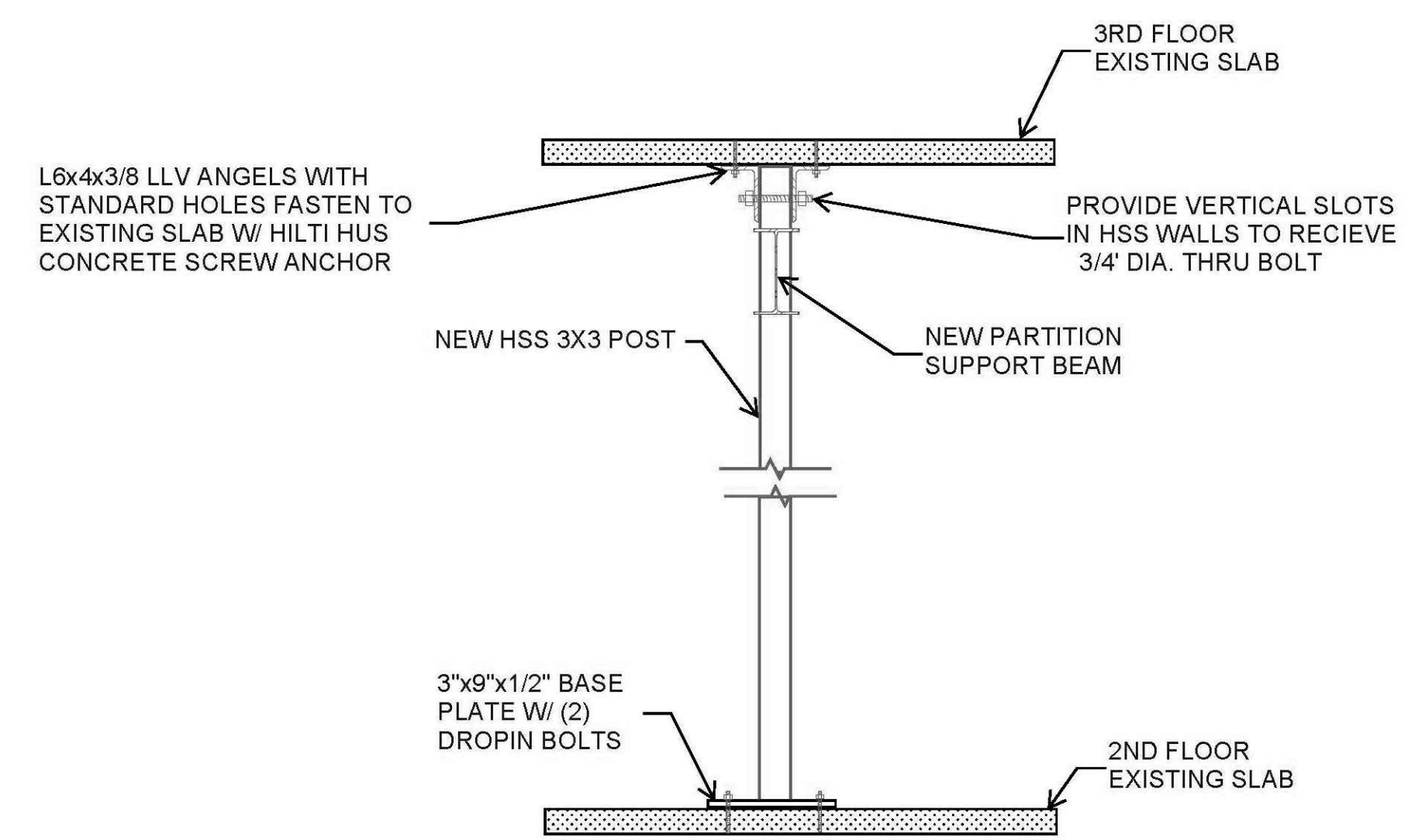
**OPERABLE PARTITION STRUCTURAL FRAMING PLAN**  
SCALE: 1/4" = 1'-0"



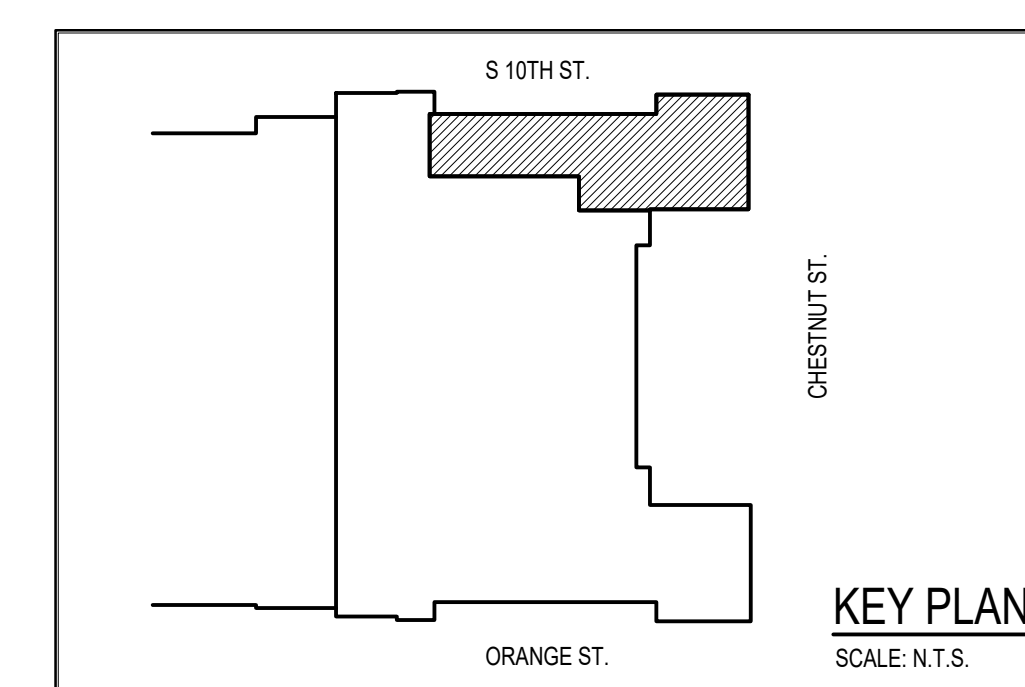
**1 SECTION DETAIL**  
A-3 N.T.S.



**2 BASE PLATE DETAIL**  
A-3 N.T.S.

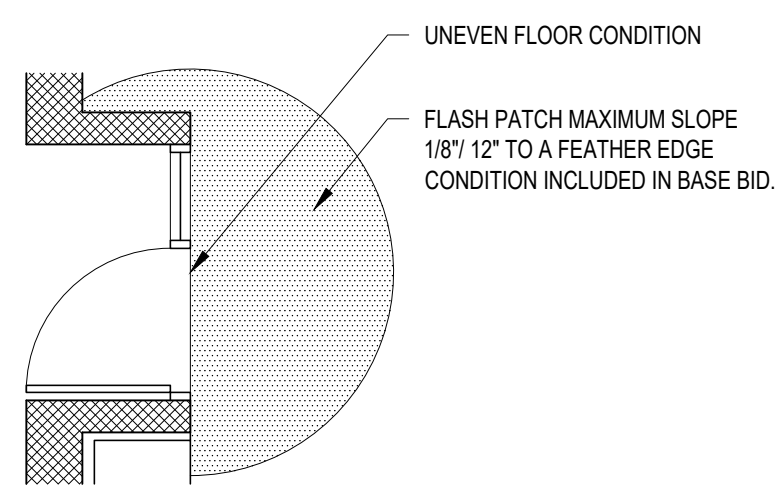


**3 SECTION DETAIL**  
A-3 N.T.S.



REVISIONS	BY

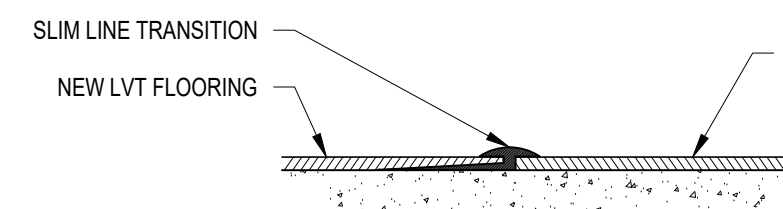
DRAWN: KDN
CHECKED: PML
DATE: 02/18/2022
SCALE: AS NOTED
JOB NO.: 2842-1
SHEET:



**1**  
A-4  
**TYPICAL FLASH PATCH DETAIL**  
SCALE: 1/4" = 1'-0"

FINISH LEGEND			
NEW FINISH		EXISTING FINISH	
SYMBOL	FINISH	SYMBOL	FINISH
	LVT - 1 (SEE PLAN FOR NOTES)		EXISTING FLOORING TO REMAIN

NOTE: AREAS RECEIVING NEW FLOORING SHALL RECEIVE NEW COVE BASE

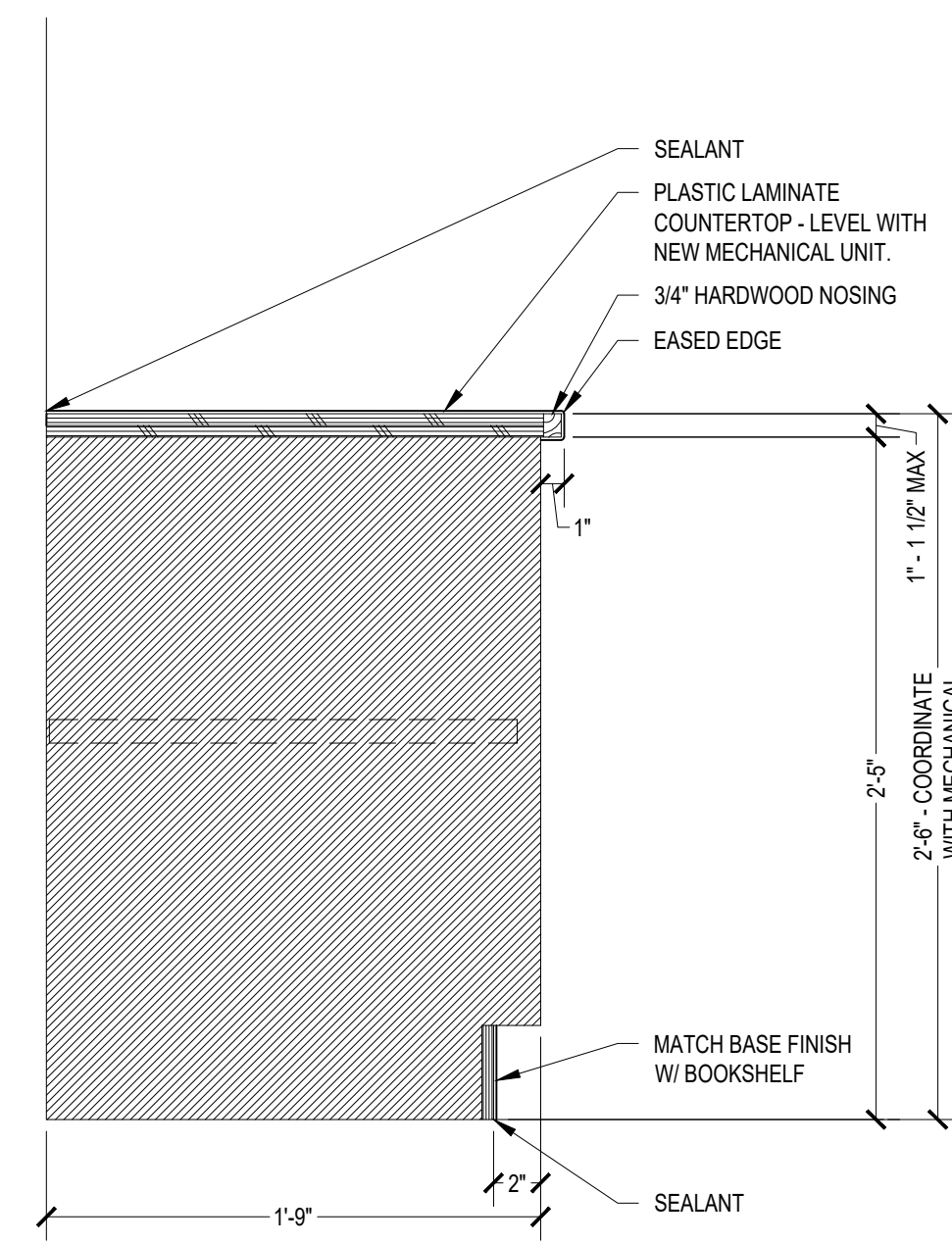


**NEW LVT TO EXISTING VCT TRANSITION DETAIL**  
SCALE: 6" = 1'-0"

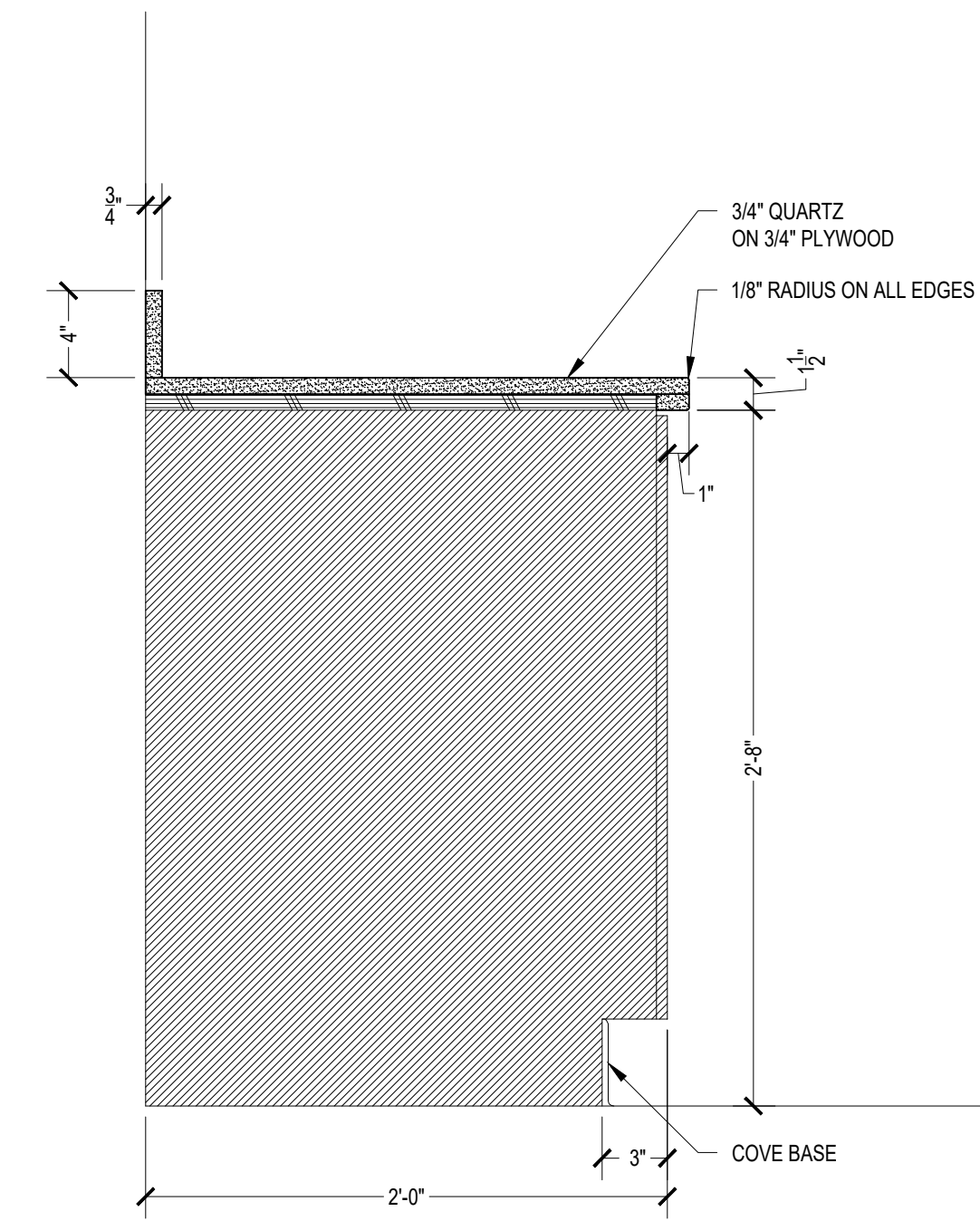
ROOM NUMBER	ROOM DESCRIPTION	ROOM FINISH SCHEDULE										REMARKS	ROOM NUMBER			
		FLOORS		BASES		WALLS		CEILING		HEIGHT						
		MATERIALS		MATERIALS		MATERIALS	FINISH	MATERIALS	FINISH							
000	CORRIDOR	L	-	1	-	1	-	1	-	1	2	3	-	10'-0"	SEE NOTE 1	000
200	LIBRARY	1	-	1	-	1	3	P	-	1	2	3	P	10'-0"	SEE NOTE 2,3,4	200
201	OFFICE	1	-	1	-	1	3	P	-	1	3	P	-	10'-0"	SEE NOTE 2,3	201
201.1	DATA CLOSET	1	-	1	-	1	-	P	-	1	-	-	-	10'-0"	SEE NOTE 2	201.1
202	LIBRARY LOBBY	1	-	1	-	1	-	P	-	1	-	-	-	10'-0"	SEE NOTE 2	202
203	LIBRARY MULTIPURPOSE ROOM	1	-	1	-	1	3	P	-	1	3	P	-	10'-0"	SEE NOTE 2,3,4	203
204	LIBRARY COMPUTER ROOM	1	-	1	-	1	3	P	-	1	3	P	-	10'-0"	SEE NOTE 2,3,4	204
205	FACULTY LOUNGE	1	-	1	-	1	2	P	-	1	3	P	-	10'-0"	SEE NOTE 1,2,3	205

GENERAL NOTES:  
- THE ROOM FINISH SCHEDULE INDICATES PRIMARY FINISHES, MATERIALS, SUBSTRATES, ETC. IN A SPECIFIC ROOM OR AREA. ALL DRAWINGS (DETAILS, ELEVATIONS, PLANS, ETC.) AND SPECIFICATIONS SHALL BE REVIEWED TO CORRELATE THE COMPLETE EXTENT OF WORK REQUIRED FOR EACH AREA OR ROOM.  
- ALL ROOMS SHALL BE PATCHED AS REQUIRED FOR NEW PAINT.

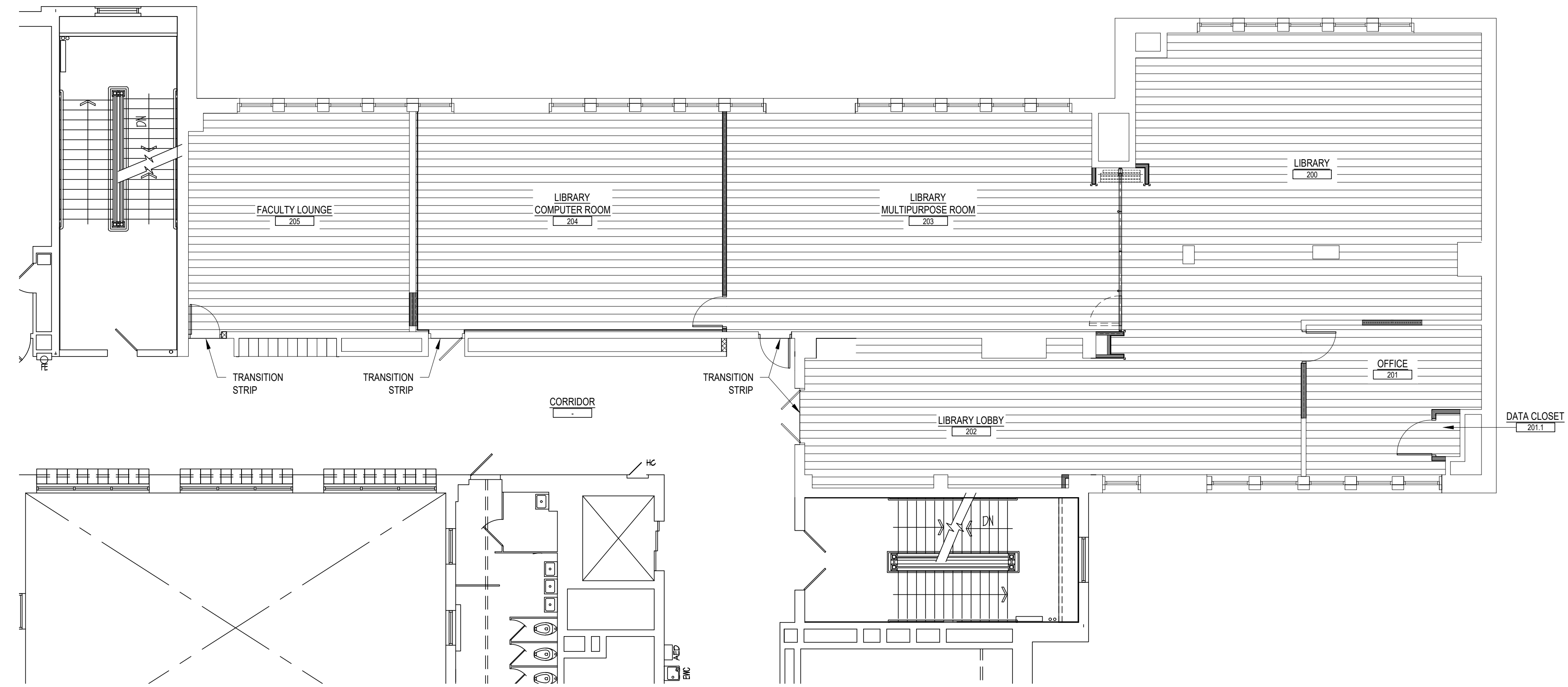
KEYED ROOM FINISH SCHEDULE NOTES:  
NOTE 1: NEW MASONRY WALL SHALL BE PLASTERED. MATCH ADJACENT WALL TEXTURE / FINISH.  
NOTE 2: NEW GYP WALL SHALL MATCH ADJACENT WALL TEXTURE / FINISH.  
NOTE 3: AT WINDOW WELL, PATCH HOLES AND PAINT.  
NOTE 4: SKIM COAT EXISTING PLASTER WALL TO LEVEL 4 FINISH.



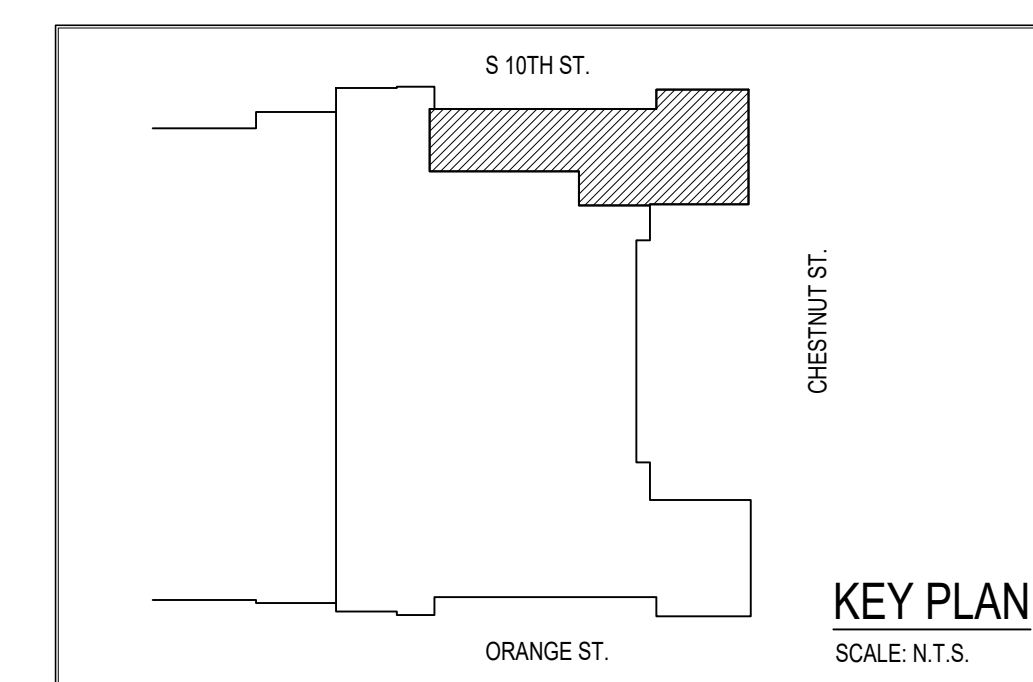
**2**  
A-4  
**SHELVING CASEWORK - COUNTERTOP DETAIL**  
SCALE: 1-1/2" = 1'-0"



**3**  
A-4  
**KITCHENETTE CASEWORK - COUNTERTOP DETAIL**  
SCALE: 1-1/2" = 1'-0"



**SECOND FLOOR FINISH PLAN**  
SCALE: 1/8" = 1'-0"



**AEM ARCHITECTS INC.**  
3705 PERKINS AVENUE, READING, PA 19608-2785  
Phone: 610.779.3220 Fax: 610.779.9022 www.aem-arch.com

REVISIONS	BY

**CONSOLIDATED ENGINEERS**  
1022 James Drive  
Lansport, PA 16803  
Tel: 610-916-1600 Fax: 610-916-1610  
www.consolidatedengineers.com

**SOUTHERN MIDDLE SCHOOL LIBRARY RENOVATIONS**  
FOR THE  
**READING SCHOOL DISTRICT**  
931 CHESTNUT ST., READING, PA 19602

**PARTIAL SECOND FLOOR FINISH PLAN, SCHEDULE, AND DETAILS**

DRAWN	KDN
CHECKED	PML
DATE	02/18/2022
SCALE	AS NOTED
JOB NO.	2842-1
SHEET	A-4

AEM # 21003.00