

PARTIAL SECOND FLOOR PLAN - DEMO
SCALE: 1/8" = 1'-0"

① DRAWING NOTES:

1. THE CONTRACTOR SHALL DISCONNECT AND REMOVE ALL EXISTING ELECTRICAL DEVICES, LOW VOLTAGE SYSTEMS, LIGHTING, CONTROLS ETC. ALL ASSOCIATED CONDUIT AND WIRING SHALL BE REMOVED. ALL EXISTING LOW VOLTAGE DATA/VOICE CABLING RUN THROUGH THE RENOVATED SPACE TO THE EXISTING DATA CABINET LOCATED IN OFFICE 219 SHALL REMAIN UNLESS THE CABLE(S) RUN TO OUTLETS WITHIN THE RENOVATED SPACE THAT ARE BEING REMOVED.
2. RELOCATE EXISTING FIRE ALARM PULL STATION TO ALLOW NEW DOOR OPENING IN WALL. MODIFY/EXTEND WIRING AS REQUIRED. SEE DWG. E-3 FOR NEW LOCATION.
3. EXISTING DATA RACK AND POWER RECEPTACLES TO REMAIN.
4. DISCONNECT AND REMOVE EXISTING RECESSED PANEL INCLUDING BACKBOX. EXISTING FEEDER AND BRANCH CIRCUITS TO REMAIN AND CONNECTED IN NEW PANEL. INSTALL NEW LARGER PANEL IN EXISTING OPENING (FLUSH IN WALL) CUT AND PATCH WALL AS REQUIRED TO MATCH EXISTING CONDITIONS. TYPICAL FOR FIRST FLOOR PANEL LOCATED DIRECTLY BELOW ON FIRST FLOOR. REFER TO PANEL SCHEDULES ON DWG E-3 FOR ADDITIONAL INFO. REFER TO DWG. E-4 FOR PANEL 1A LOCATION. PAINT DISTURBED AREA TO MATCH ADJACENT SURFACE.

PROJECT DEMOLITION NOTES:

1. THE CONTRACTOR IS RESPONSIBLE FOR VISITING THE SITE PRIOR TO BIDDING REVIEWING THE EXISTING FACILITY AND ALL CONTRACT DRAWINGS TO DETERMINE THE EXTENT OF THE ELECTRICAL DEMOLITION WORK. THE CONTRACTOR SHALL COORDINATE THE DEMOLITION WITH ALL TRADES. THE CONTRACTOR SHALL FULLY UNDERSTAND THE DEMOLITION SCOPE. NO CHANGE ORDERS WILL BE PERMITTED FOR DEMOLITION AFTER AWARD OF BID. ELECTRICAL DEMOLITION SHALL INCLUDE ALL WORK AS OUTLINED BELOW. COORDINATE ALL DEMOLITION WITH CONSTRUCTION SCHEDULE.
2. THE CONTRACTOR SHALL BE RESPONSIBLE FOR REVIEWING ALL OF THE PLUMBING, HEATING AND ARCHITECTURAL DRAWINGS FOR THE EQUIPMENT BEING REMOVED. ALL EXISTING PLUMBING, HEATING AND ARCHITECTURAL EQUIPMENT ON THOSE DRAWINGS INDICATED TO BE REMOVED, SHALL BE ELECTRICALLY DISCONNECTED BY THE ELECTRICAL CONTRACTOR. ALL EXISTING PLUMBING, HEATING AND ARCHITECTURAL EQUIPMENT SHOWN ON THOSE DRAWINGS TO REMAIN, SHALL REMAIN ELECTRICALLY CONNECTED UNLESS NOTED OTHERWISE ON THE ELECTRICAL DRAWINGS.
3. THE CONTRACTOR SHALL BE RESPONSIBLE FOR REVIEWING ALL OF THE ARCHITECTURAL CASEWORK DRAWINGS. EXISTING DEVICES THAT FALL BEHIND NEW CASEWORK SHALL BE DISCONNECTED, REMOVED AND A BLANK COVER PLATE INSTALLED. REROUTE EXISTING CIRCUIT AS REQUIRED TO MAINTAIN CIRCUIT CONTINUITY.
4. REMOVE ALL EXISTING CONDUIT AND WIRING BEING ABANDONED.
5. RELOCATE OR EXTEND EXISTING CIRCUITS NOT BEING ABANDONED, AS REQUIRED ON A PERMANENT BASIS TO ACCOMMODATE NEW WORK AND MAINTAIN CIRCUIT INTEGRITY.
6. CONTRACTOR SHALL PATCH WALLS, FLOORS, CEILINGS, ETC. TO MATCH ADJACENT SURFACES WHERE EXISTING EQUIPMENT IS BEING REMOVED. PATCHING SHALL BE PROVIDED FOR ALL OPENINGS, INCLUDING, BUT NOT LIMITED TO OPENINGS FOR CONDUITS, BOXES, ANCHORS, ETC. PATCHING SHALL INCLUDE EVERYTHING, EXCEPT FINAL FINISH. IN LIEU OF PATCHING, CONTRACTOR MAY USE BLANK WALL PLATES FOR STANDARD SIZE SINGLE AND MULTI-GANG DEVICE BOXES (I.E. SWITCH AND RECEPTACLE BOXES). COVER PLATES SHALL MATCH OTHER DEVICE PLATES IN THE AREA IN BOTH MATERIAL AND FINISH. CONTRACTOR SHALL REMOVE ALL RECESSED BOXES FOR LARGER NON-STANDARD SIZE BOXES (I.E., FIRE ALARM PULLS AND BELLS, CLOCKS, SPEAKERS, PANELBOARDS, ETC.) AND PATCH SURFACES.
7. THE OWNER SHALL HAVE FIRST CHOICE OF ANY EXISTING EQUIPMENT OR MATERIALS BEING REMOVED. THE CONTRACTOR SHALL DELIVER ITEMS TO BE SALVAGED BY THE OWNER TO DESIGNATED STORAGE AREA ON THE JOB SITE. ALL EQUIPMENT AND MATERIALS REJECTED BY THE OWNER SHALL BECOME THE PROPERTY OF THE CONTRACTOR. CONTRACTOR SHALL REMOVE THESE ITEMS FROM THE SITE AND PROPERLY DISPOSE OF THEM.
8. THE CONTRACTOR SHALL DISCONNECT AND REMOVE ALL EXISTING LIGHTING FIXTURES AND ASSOCIATED WIRING IN AREAS WHERE NEW FIXTURES ARE SHOWN OR OTHERWISE NOTED.
9. WHERE DEMOLISHED ITEMS REVEAL UNEVEN CONSTRUCTION, INTERRUPTED FINISHES, ATTACHMENT HOLES AND OTHER CONDITIONS THAT DO NOT MATCH EXISTING ADJACENT FINISH CONSTRUCTION, PATCH TO MATCH EXISTING ADJACENT FINISHES.

REVISIONS	BY

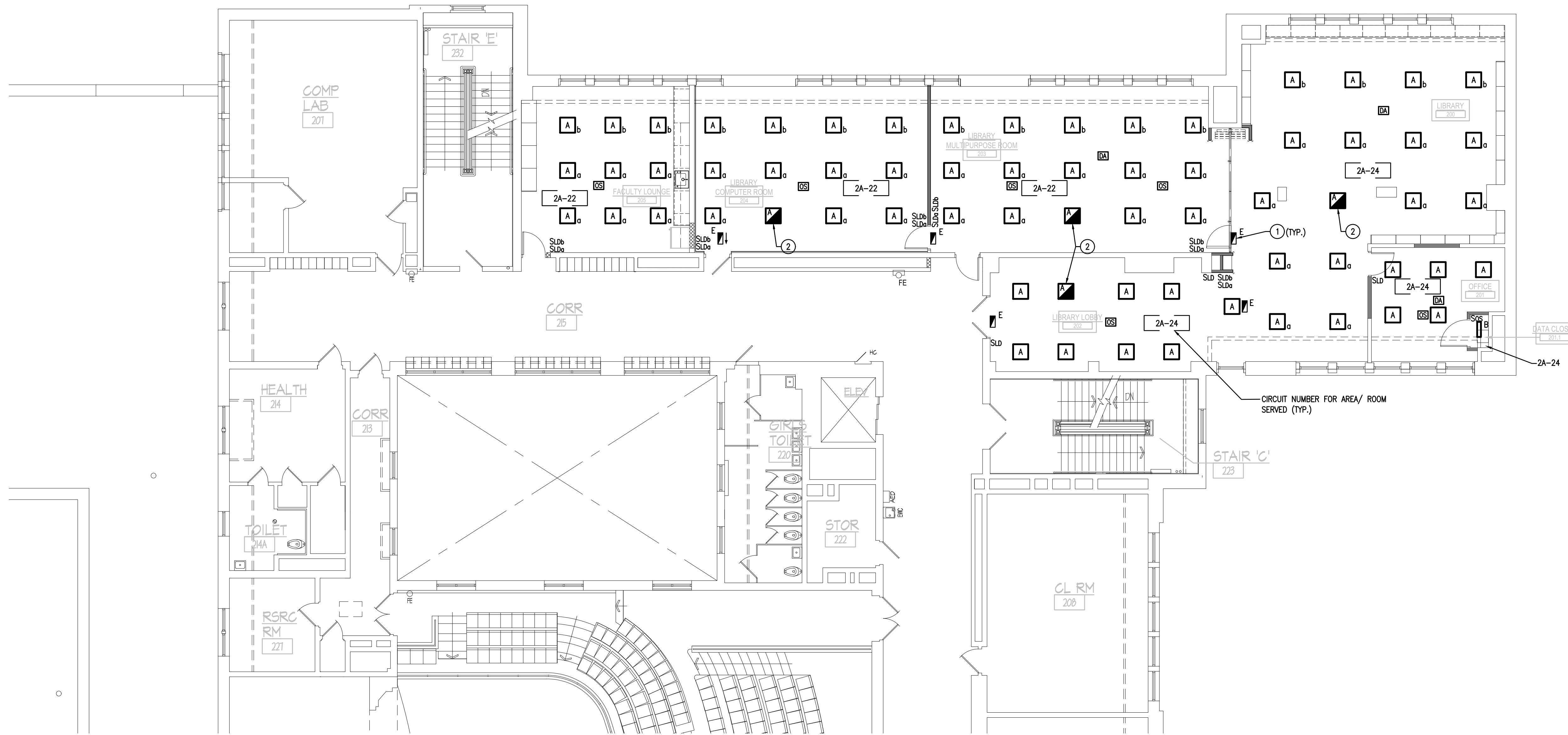
CONSOLIDATED ENGINEERS
1028 Adams Drive
Lansport, PA 16803
Tel: 610-916-1500 Fax: 610-916-1510
www.consolidatedengineers.com



SOUTHERN MIDDLE SCHOOL LIBRARY RENOVATIONS
FOR THE
READING SCHOOL DISTRICT
931 CHESTNUT ST., READING, PA 19602

**PARTIAL SECOND FLOOR
PLAN - ELECTRICAL
DEMOLITION**

DRAWN BY
CHECKED JS
DATE 2-18-2022
SCALE AS NOTED
JOB NO. 2842-1
SHEET



PARTIAL SECOND FLOOR - LIGHTING PLAN
SCALE: 1/8" = 1'-0"

- DRAWING NOTES:**
- CONNECT EXIT SIGN TO NEAREST EXISTING CORRIDOR NORMAL/ EMERGENCY (24/7) LIGHTING CIRCUIT. (TYP. TYPE "E" EXIT SIGN.)
 - CONNECT LIGHT FIXTURE TO NEAREST EXISTING CORRIDOR NORMAL/ EMERGENCY (24/7) LIGHTING CIRCUIT.

LIGHTING FIXTURE SCHEDULE							THE APPROVED SUBSTITUTES ARE APPROVED AS MANUFACTURERS ONLY. FIXTURES MUST MEET DRAWING AND SPECIFICATION REQUIREMENTS.	
TYPE	MANUFACTURER	CATALOG NUMBER	WATTS	VOLTS	MOUNTING	APPROVED SUBSTITUTES	REMARKS	
A	ATLAS LIGHTING	FAELP-22-40-LED-U	40	UNV.	RECESSED	NOTE 1	FIELD ADJUST LUMEN COLOR TO 3500K.	
B	LITHONIA	ZLN-LED-L24-1500LM-FST-35K 80CRI-WH	15	4WVOLT	CHAIN HUNG	METALUX DAY BRITE		
C	LITHONIA	TLER	1	4WVOLT	UNIVERSAL	METALUX DAY BRITE		

LIGHTING FIXTURE SCHEDULE NOTES:

- OWNER REQUIRED LIGHT FIXTURE, NOT TO BE SUBSTITUTED.

REVISIONS	BY

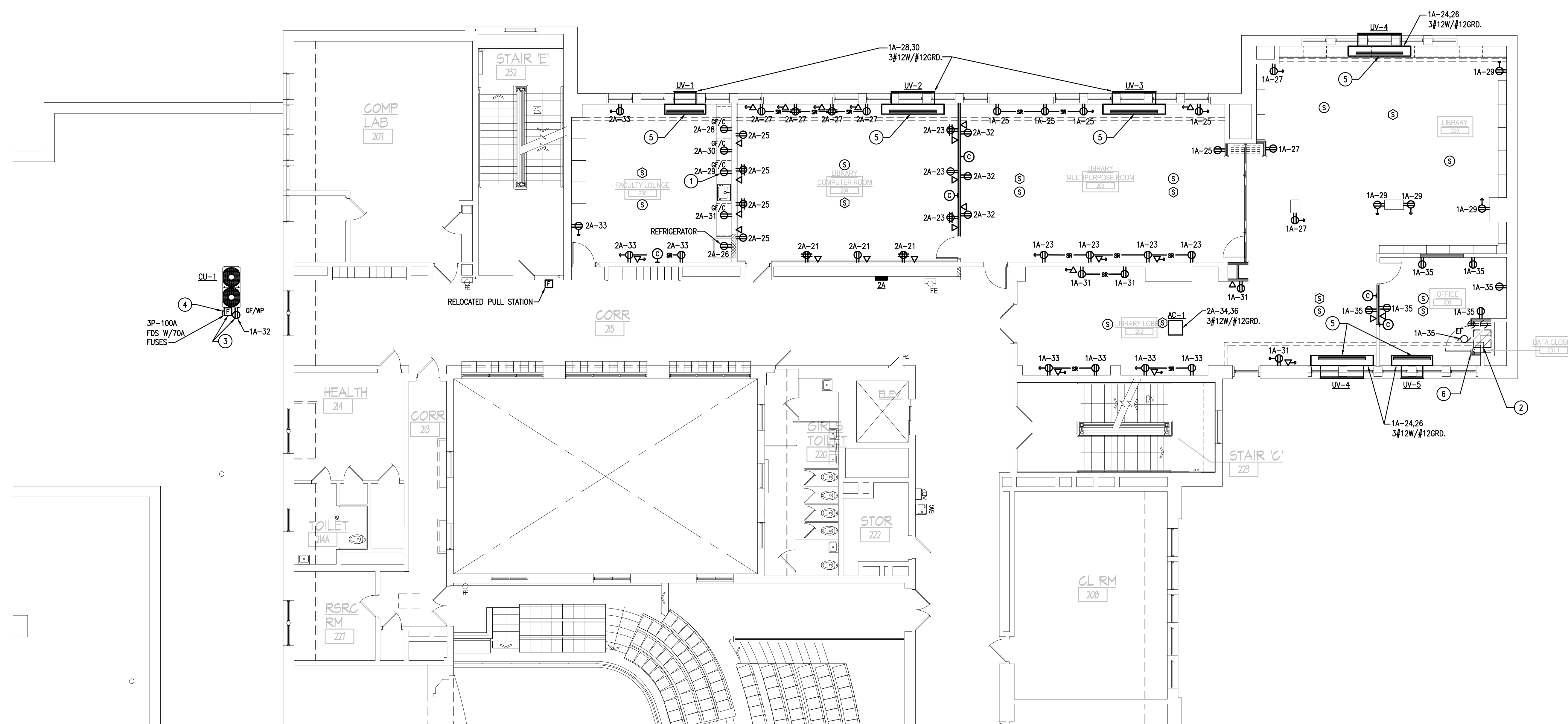
CONSOLIDATED ENGINEERS
1028 James Drive
Lansport, PA 15853
Tel: 610-916-1500 Fax: 610-916-1510
www.consolidatedengineers.com

SOUTHERN MIDDLE SCHOOL LIBRARY RENOVATIONS
FOR THE
READING SCHOOL DISTRICT
931 CHESTNUT ST., READING, PA 19602

PARTIAL SECOND FLOOR
PLAN - LIGHTING

DRAWN BY
CHECKED JS
DATE 2-18-2022
SCALE AS NOTED
JOB NO. 2842-1
SHEET

REVISIONS	BY



ELECTRICAL LEGEND

(REFER TO SPECIFICATIONS FOR MORE INFORMATION)
NOTE: DIMENSIONS ARE TO CENTER OF DEVICE, UNO.

LIGHTING FIXTURES

(REFER TO LIGHTING FIXTURE SCHEDULE FOR DESCRIPTION AND TYPE)

SYMBOL	DESCRIPTION
□	- LED LIGHTING FIXTURE.
●	- LIGHTING FIXTURE - NORMAL AND EMERGENCY POWER.
○	- LED LIGHTING FIXTURE
■	- EXIT LIGHTING FIXTURE - NORMAL AND EMERGENCY POWER - ARROW(S) INDICATE DIRECTIONAL MARKERS.
☐	- PHANTOM SYMBOL INDICATES EXISTING ITEM OR AS NOTED ON DRAWINGS.

SWITCHES

SYMBOL	DESCRIPTION
S	- SINGLE POLE SWITCH - 20 AMP - MOUNT 46" AFF.
S3	- THREE WAY LIGHT SWITCH - 20 AMP - MOUNT 46" AFF.
S4	- FOUR WAY LIGHT SWITCH - 20 AMP - MOUNT 46" AFF.
Sk	- KEY OPERATED LIGHT SWITCH - 20 AMP - MOUNT 46" AFF.
S _a S _b	- SUB-LETTERS INDICATE INDIVIDUAL FIXTURE WIRING CONTROL- MOUNT 46" AFF.
S _p	- LIGHT SWITCH WITH PILOT LIGHT - 20 AMP - SIMILAR TO P&S PS20AC2-RPL SERIES - MOUNT 46" AFF.
S _w	- WIRELESS DIMMER LIGHT SWITCH - LUTRON PICO WIRELESS REMOTE - CAT NO. PJZ-3BR-L-QWH-L01 - PROVIDE WITH POWER PACK ABOVE CEILING TO COMMUNICATE WITH WIRELESS OCCUPANCY SENSORS. PROVIDE REQUIRED POWER AND LOW VOLTAGE WIRING - POWERPACK SHALL BE LUTRON CAT NO. RMJS-87-0V-B.
S _{os}	- OCCUPANCY SENSING WALL SWITCH - MOUNT 46" AFF.
OS	- WIRELESS CEILING OCCUPANCY SENSOR - LUTRON WIRELESS OCCUPANCY SENSOR - CAT NO. LRF2-0CR2B-P-WH
DA	- WIRELESS CEILING DAY-LIGHT SENSOR, LUTRON PICO WIRELESS SYSTEM. LRF2-DCRB-P-WH

RECEPTACLES

SYMBOL	DESCRIPTION
⊕	- DUPLEX RECEPTACLE - 20 AMP - 120 VOLT 18" AFF.
⊕	- GROUND FAULT RECEPTACLE - INDIVIDUAL TYPE - 18" ABOVE FINISHED FLOOR.
⊕	- DUPLEX RECEPTACLE (WITH "WR" LABEL) WITH WEATHER PROOF COVER - FLUSH - 18" AFF.

EQUIPMENT

SYMBOL	DESCRIPTION
⊕	- JUNCTION BOX - PROVIDE FINAL CONNECTION TO EQUIPMENT.
⊕	- MOTOR - SIZE AND TYPE AS INDICATED - BY OTHERS. PROVIDE FINAL CONNECTIONS.
⊕	- MOTOR CONTROLLER - BY OTHERS. PROVIDE FINAL CONNECTIONS.
⊕	- PANELBOARD.
⊕	- EXISTING PANELBOARD.
Sr	- THERMAL SWITCH MANUAL STARTER WITH THERMAL PROTECTION AND HAND/AUTO SWITCH TO ALLOW STARTER CONTROL FROM REMOTE SOURCE. HAND/AUTO SWITCH ONLY REQUIRED FOR RE-CIRCULATING PUMPS. SQUARE D CLASS 2510 SERIES WITH HANDLE GUARD/LOCK OFF ATTACHMENT MOUNT ON OR ADJACENT TO EQUIPMENT.
⊕	- NON-FUSED DISCONNECT SWITCH - SIZE AND TYPE INDICATED.
⊕	- FUSED DISCONNECT SWITCH - SIZE AND TYPE INDICATED (PROVIDE FUSES AS PER EQUIPMENT MANUFACTURERS REQUIREMENTS).
⊕	- COMBINATION STARTER/DISCONNECT SWITCH - SIZE 1 U.N.O. - PROVIDED BY E.C. - 60" TO HANDLE.
⊕	- VARIABLE FREQUENCY DRIVE - FURNISHED BY OTHERS. INSTALL DRIVE AND PROVIDE FINAL CONNECTIONS.
⊕	- EXHAUST FAN - ROOF MOUNTED - PROVIDED BY OTHERS. PROVIDE FINAL CONNECTIONS.

COMMUNICATION SYSTEMS

SYMBOL	DESCRIPTION
⊕	- 8" ROUND RECESSED SOUND SYSTEM SPEAKER - CEILING MOUNTED (PAGING SYSTEM). PROVIDE WIRING AND CONNECTIONS TO EXISTING TELECOR II SYSTEM.
⊕	- 12" 110V WALL WIRELESS CORRECTING CLOCK- RECESSED IN WALL- PROVIDE CONNECTIONS AND WIRING TO TELECOR II SYSTEM. PROVIDE SURFACE CLOCKS WHERE REQUIRED. CONNECT TO NEAREST UNSWITCHED 120V CIRCUIT.

FIRE ALARM SYSTEM

SYMBOL	DESCRIPTION
⊕	- FIRE ALARM AUDIO UNIT - (FLUSH CEILING).
⊕	- FIRE ALARM VISUAL UNIT (FLUSH CEILING)
⊕	- COMBINATION FIRE ALARM AUDIO/ VISUAL UNIT, CEILING MOUNT- WHITE.
⊕	- SMOKE DETECTOR.
⊕	- FIRE ALARM CONTROL PANEL.
⊕	- FIRE ALARM PULL STATION.

WIRING

SYMBOL	DESCRIPTION
—	- HOMERUN TO APPLICABLE PANEL - WIRING SHALL BE 2#12 AWG WITH SEPARATE GROUND WIRE IN 3/4" CONDUIT UNLESS OTHERWISE NOTED.
—	- WIRING - CONCEALED AS SPECIFIED OR AS OTHERWISE NOTED.
—	- NORMAL/ EMERGENCY LIGHTING CIRCUIT.
1	- INDICATES DRAWING NOTE NUMBER.

ABBREVIATIONS

SYMBOL	DESCRIPTION
AFF	- ABOVE FINISHED FLOOR
AFG	- ABOVE FINISHED GRADE
CU	- CONDENSING UNIT - BY OTHERS. PROVIDE FINAL CONNECTIONS.
EF	- EXHAUST FAN - BY OTHERS. PROVIDE FINAL CONNECTIONS.
NFDS	- NON FUSED DISCONNECT SWITCH
FDS	- FUSED DISCONNECT SWITCH

PARTIAL SECOND FLOOR - POWER PLAN

SCALE: 1/8" = 1'-0"

DRAWING NOTES:

- CUT RECEPTACLE BOX INTO EXISTING WALL. FISH WIRE OR RUN NEW WIRING IN LIBRARY COMPUTER ROOM FURRED OUT SIDE OF WALL TYPICAL FOR COUNTER RECEPTACLES.
- EXISTING DATA RACK TO REMAIN. E.C. SHALL PROTECT RACK DURING CONSTRUCTION.
- PROVIDE MISCELLANEOUS STEEL TO MOUNT EQUIPMENT TO.
- RUN 3 #1W/#6GRD. 1-1/2" CONDUIT TO EXISTING PANEL 'G1' ABOVE ACCESSIBLE CEILING FLENUM. ADD 3P-90A CIRCUIT BREAKER.
- E.C. SHALL CONNECT TO UNIT VENT INTERNAL MAIN DISCONNECT (PROVIDE IN UNIT BY H.C.) E.C. SHALL EXTEND WIRING INSIDE UNIT AND PROVIDE 2-POLE TOGGLE TYPE DISCONNECT AND PROVIDE SECOND 208V CONNECTION INTERNALLY.
- EXH. FAN SPEED CONTROL SWITCH (PROVIDED BY H.C.) WIRED BY E.C. COORDINATE SWITCH LOCATION W/H.C. IN FIELD.

SQUARE D NO

WITH GRD. BAR & 100% RATED NEUTRAL				AIC RATING		10,000			
PANEL	1A	MAINS	225A MLD *	#	1	WIRES	3	POLES	42
VOLTS				120/240	MOUNTING	RECESSED	LOCATION		
				1ST FLOOR CORRIDOR					
REMARKS AND LOCATION	LOAD	BKR	CKT	CKT	BKR	LOAD	REMARKS AND LOCATION		
EXISTING CIRCUIT	15	1		2	15		EXISTING CIRCUIT		
EXISTING CIRCUIT	15	3		4	15		EXISTING CIRCUIT		
EXISTING CIRCUIT	15	5		6	15		EXISTING CIRCUIT		
EXISTING CIRCUIT	15	7		8	15		EXISTING CIRCUIT		
EXISTING CIRCUIT	15	9		10	15		EXISTING CIRCUIT		
EXISTING CIRCUIT	15	11		12	15		EXISTING CIRCUIT		
EXISTING CIRCUIT	15	13		14	15		EXISTING CIRCUIT		
EXISTING CIRCUIT	15	15		16	15		EXISTING CIRCUIT		
EXISTING CIRCUIT	15	17		18	15		EXISTING CIRCUIT		
EXISTING CIRCUIT	15	19		20	20		EXISTING CIRCUIT		
EXISTING CIRCUIT	20	21		22	20		EXISTING CIRCUIT		
2ND FL. MULTI-PUR. RECPT'S	540	20	23	24	20		LIB. UNIT VENTS		
2ND FL. MULTI-PUR. RECPT'S	540	20	25	26	2		LIB. UNIT VENTS		
2ND FL. LIB. RECPT'S	540	20	27	28	20		FAC. COMP. & M.P. UNIT VENTS		
2ND FL. LIB. RECPT'S	540	20	29	30	2		LIB. UNIT VENTS		
2ND FL. LIB. RECPT'S	540	20	31	32	20	180	ROOF RECPT. AT COND. UNIT		
2ND FL. LIB. RECPT'S	540	20	33	34			BLANK SPACE		
2ND FL. LIB. RECPT'S	540	20	35	36			BLANK SPACE		
BLANK SPACE			37	38			BLANK SPACE		
BLANK SPACE			39	40			BLANK SPACE		
BLANK SPACE			41	42			BLANK SPACE		

▲ - DISCONNECT EXISTING CIRCUIT AND RECONNECT IN NEW PANEL. E.C. SHALL VERIFY ALL EXISTING CIRCUIT BREAKER SIZES IN FIELD PRIOR TO ORDERING PANEL. MODIFY/ EXTEND EXISTING WIRING AS REQUIRED.
* - DISCONNECT EXISTING FEEDER AND RECONNECT IN NEW PANEL. MODIFY/ EXTEND EXISTING FEEDOR AS REQUIRED.

SQUARE D NO

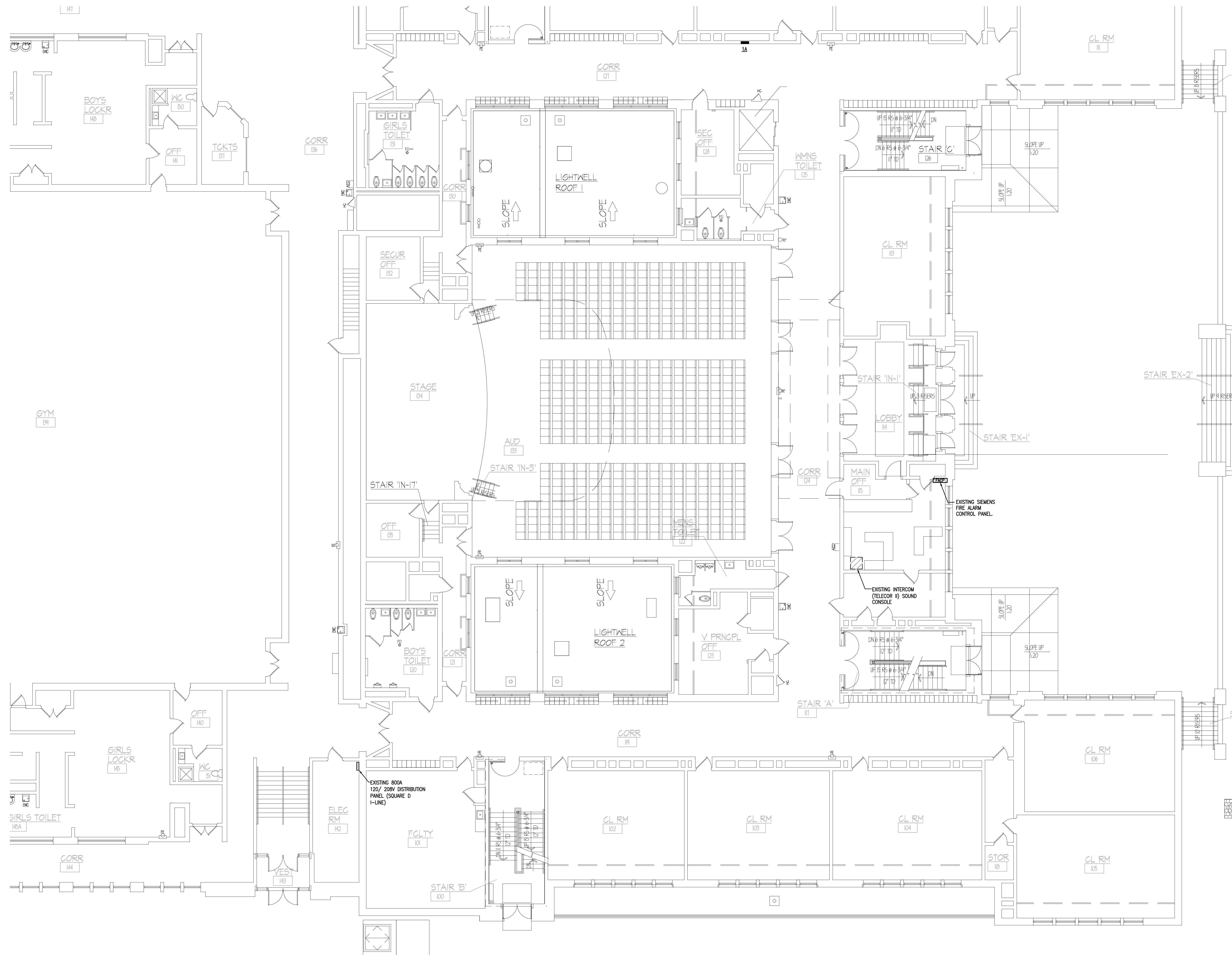
WITH GRD. BAR & 100% RATED NEUTRAL				AIC RATING		10,000			
PANEL	2A	MAINS	225A MLD *	#	1	WIRES	3	POLES	42
VOLTS				120/240	MOUNTING	SURFACE	LOCATION		
				2ND FLOOR CORRIDOR					
REMARKS AND LOCATION	LOAD	BKR	CKT	CKT	BKR	LOAD	REMARKS AND LOCATION		
EXISTING CIRCUIT	15	1		2	15		EXISTING CIRCUIT		
EXISTING CIRCUIT	20	3		4	15		EXISTING CIRCUIT		
EXISTING CIRCUIT	15	5		6	15		EXISTING CIRCUIT		
EXISTING CIRCUIT	15	7		8	15		EXISTING CIRCUIT		
EXISTING CIRCUIT	15	9		10	15		EXISTING CIRCUIT		
EXISTING CIRCUIT	15	11		12	15		EXISTING CIRCUIT		
EXISTING CIRCUIT	20	13		14	20		EXISTING CIRCUIT		
EXISTING CIRCUIT	20	15		16	20		EXISTING CIRCUIT		
EXISTING CIRCUIT	20	17		18	20		EXISTING CIRCUIT		
EXISTING CIRCUIT	20	19		20	20		EXISTING CIRCUIT		
LIB. COMP. RM.	540	20	21	22	20	1360	LTS. FAC. COMP. RM. M.P.R.		
LIB. COMP. RM.	540	20	23	24	20	1200	LTS. LIB/ LIB OFF.		
LIB. COMP. RM.	540	20	25	26	20	180	FACULTY RM. REFRIG.		
LIB. COMP. RM.	540	20	27	28	20	180	FACULTY RM. COUNTER.		
FACULTY RM. COUNTER	180	20	29	30	20	180	FACULTY RM. COUNTER.		
FACULTY RM. COUNTER	180	20	31	32	20	540	MULTI-PUR. RM RECPT'S		
FACULTY RM. RECPT'S	540	20	33	34	20		LIB. LOBBY A/C UNIT		
SPARE	20	35		36	2		BLANK SPACE		
SPARE	20	37		38			BLANK SPACE		
SPARE	20	39		40			BLANK SPACE		
SPARE	20	41		42			BLANK SPACE		

▲ - DISCONNECT EXISTING CIRCUIT AND RECONNECT IN NEW PANEL. E.C. SHALL VERIFY ALL EXISTING CIRCUIT BREAKER SIZES IN FIELD PRIOR TO ORDERING PANEL. MODIFY/ EXTEND EXISTING WIRING AS REQUIRED.
* - DISCONNECT EXISTING FEEDER AND RECONNECT IN NEW PANEL. MODIFY/ EXTEND EXISTING FEEDOR AS REQUIRED.

SOUTHERN MIDDLE SCHOOL LIBRARY RENOVATIONS
 FOR THE
READING SCHOOL DISTRICT
 931 CHESTNUT ST., READING, PA 19602

PARTIAL SECOND FLOOR
PLAN - POWER


DRAWN	RY
CHECKED	JS
DATE	2-18-2022
SCALE	AS NOTED
JOB NO.	2842-1
SHEET	



PARTIAL FRIST FLOOR - POWER PLAN
 SCALE: 1/8" = 1'-0"

REVISIONS	BY

CONSOLIDATED ENGINEERS
 1028 James Drive
 Langport, PA 19053
 Tel: 610-916-1600 Fax: 610-916-1610
 www.consolidatedengineers.com



SOUTHERN MIDDLE SCHOOL LIBRARY RENOVATIONS
 FOR THE
READING SCHOOL DISTRICT
 931 CHESTNUT ST., READING, PA 19602

PARTIAL FIRST FLOOR PLAN - POWER

DRAWN	RK
CHECKED	JS
DATE	2-18-2022
SCALE	AS NOTED
JOB NO.	2842-1
SHEET	