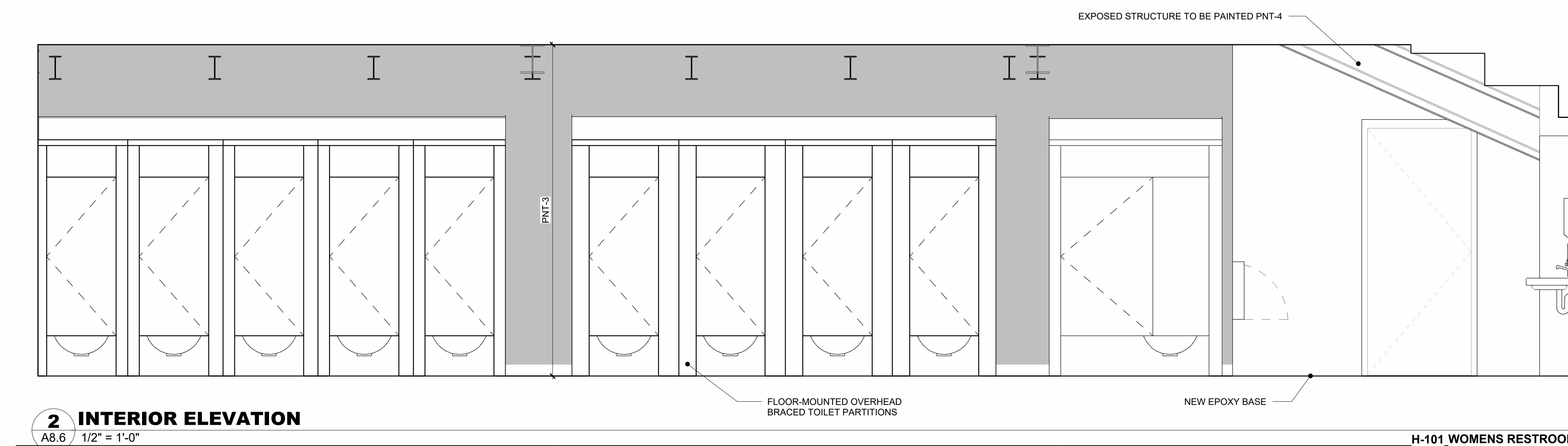


## 1 INTERIOR ELEVATION

FLOOR-MOUNTED OVERHEAD -  
BRACED TOILET PARTITIONS

— REPEAT WALL PAINT PATTERN INSIDE  
TOILET STALLS. TYPICAL THIS ROOM

H-101 WOMENS RESTROOM

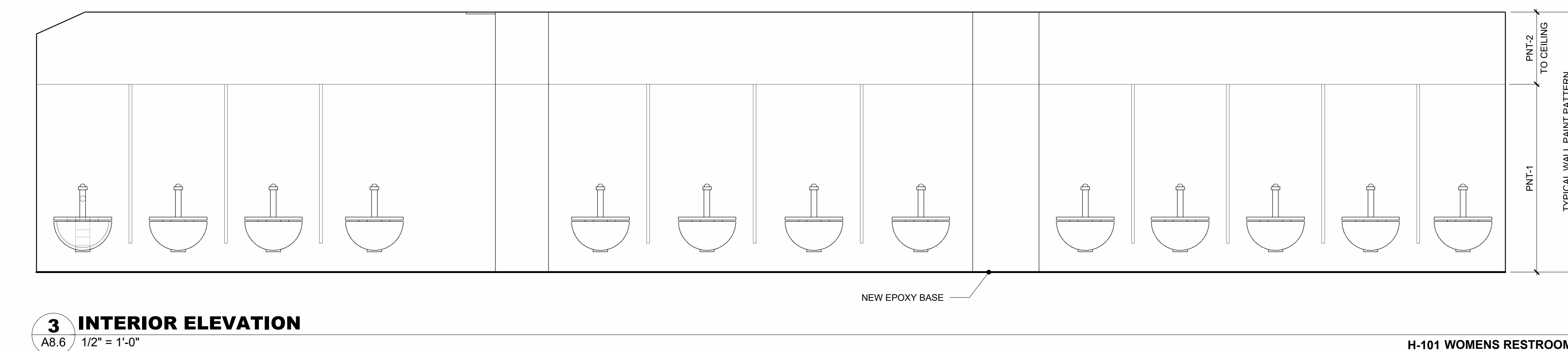


## 2 INTERIOR ELEVATION

— FLOOR-MOUNTED OVERHEAD  
BRACED TOILET PARTITIONS

NEW EPOXY BASE —

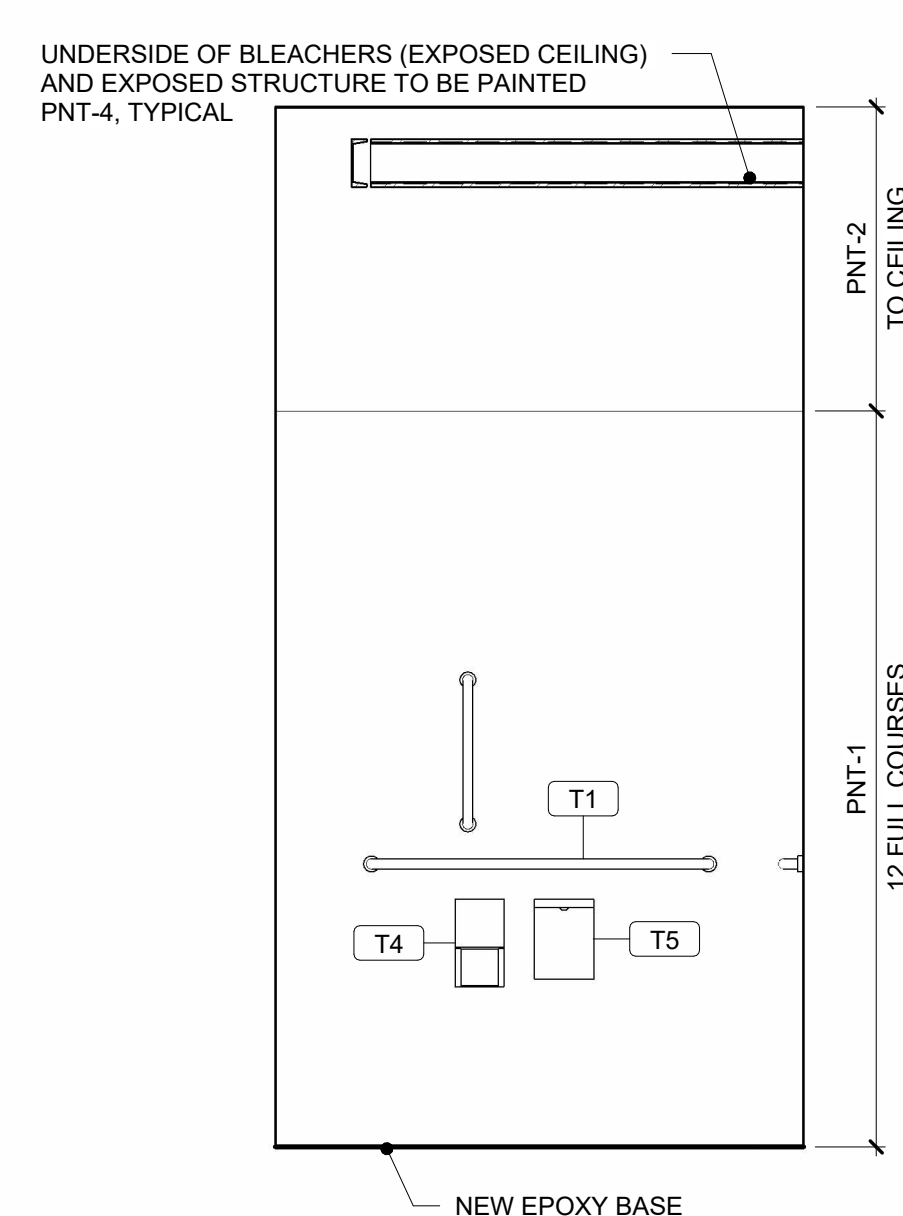
**H-101 WOMENS RESTROOM**



### 3 INTERIOR ELEVATION

NEW EPOXY BASE

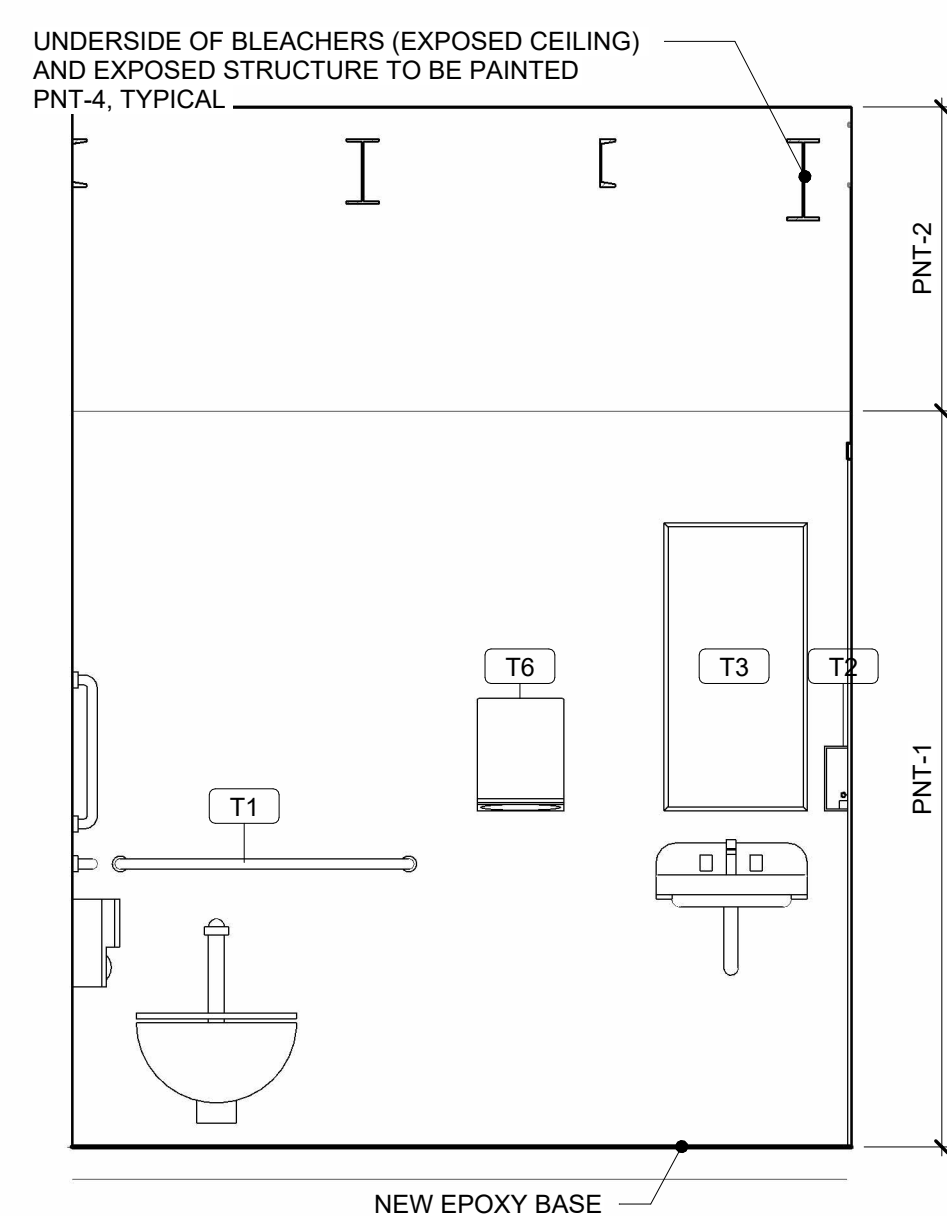
H-101 WOMENS RESTROOM



**4 INTERIOR ELEVATION**  
A8.6 1/2" = 1'-0" H-103 RESTROOM

## NEW EPOXY BASE

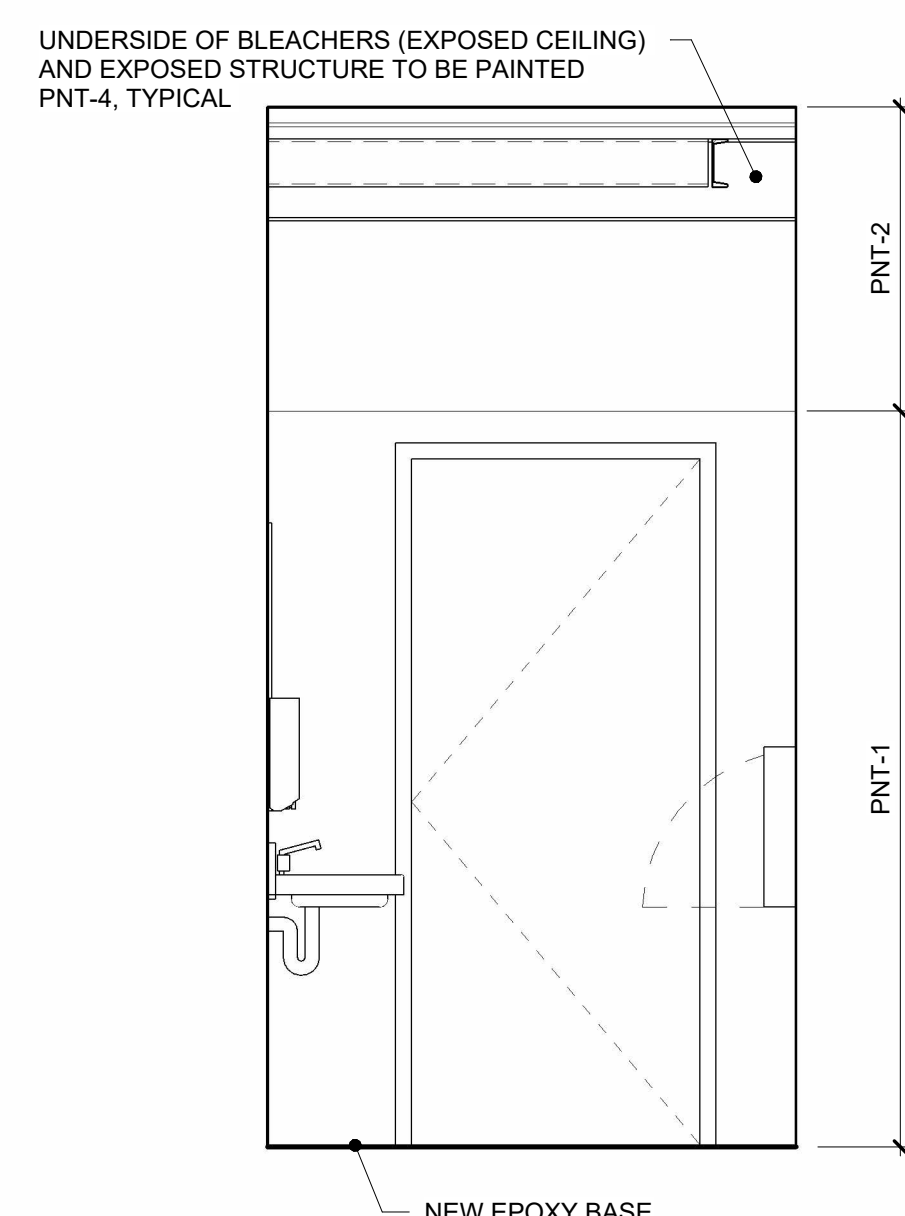
H-103 RESTROOM



**5 INTERIOR ELEVATION**  
A8.6 1/2" = 1'-0" H-103 RESTROOM

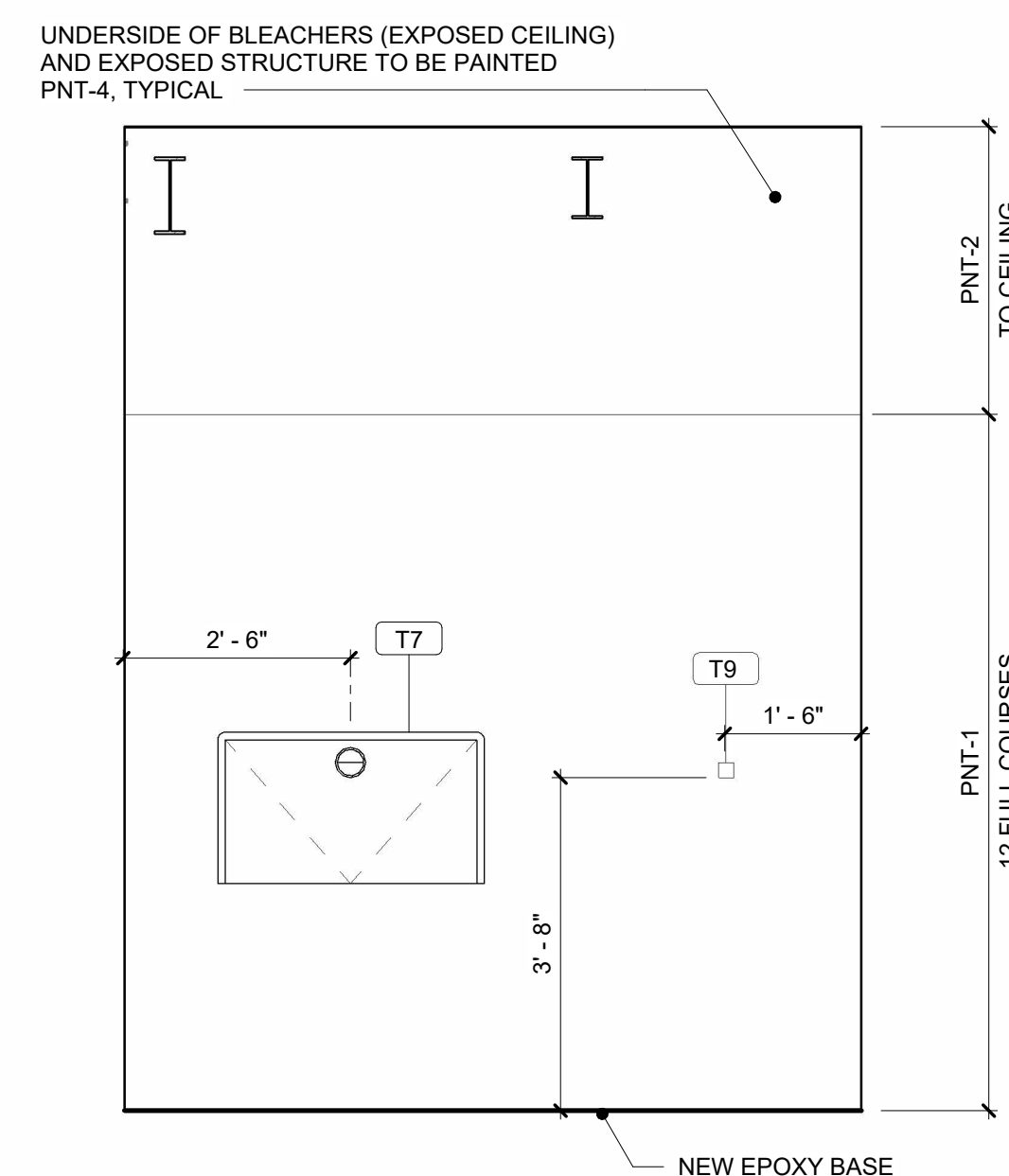
NEW EPOXY BAS

**H-103 RESTROOM**



**6 INTERIOR ELEVATION**  
A8.6 1/2" = 1'-0" H-103 RESTROOM

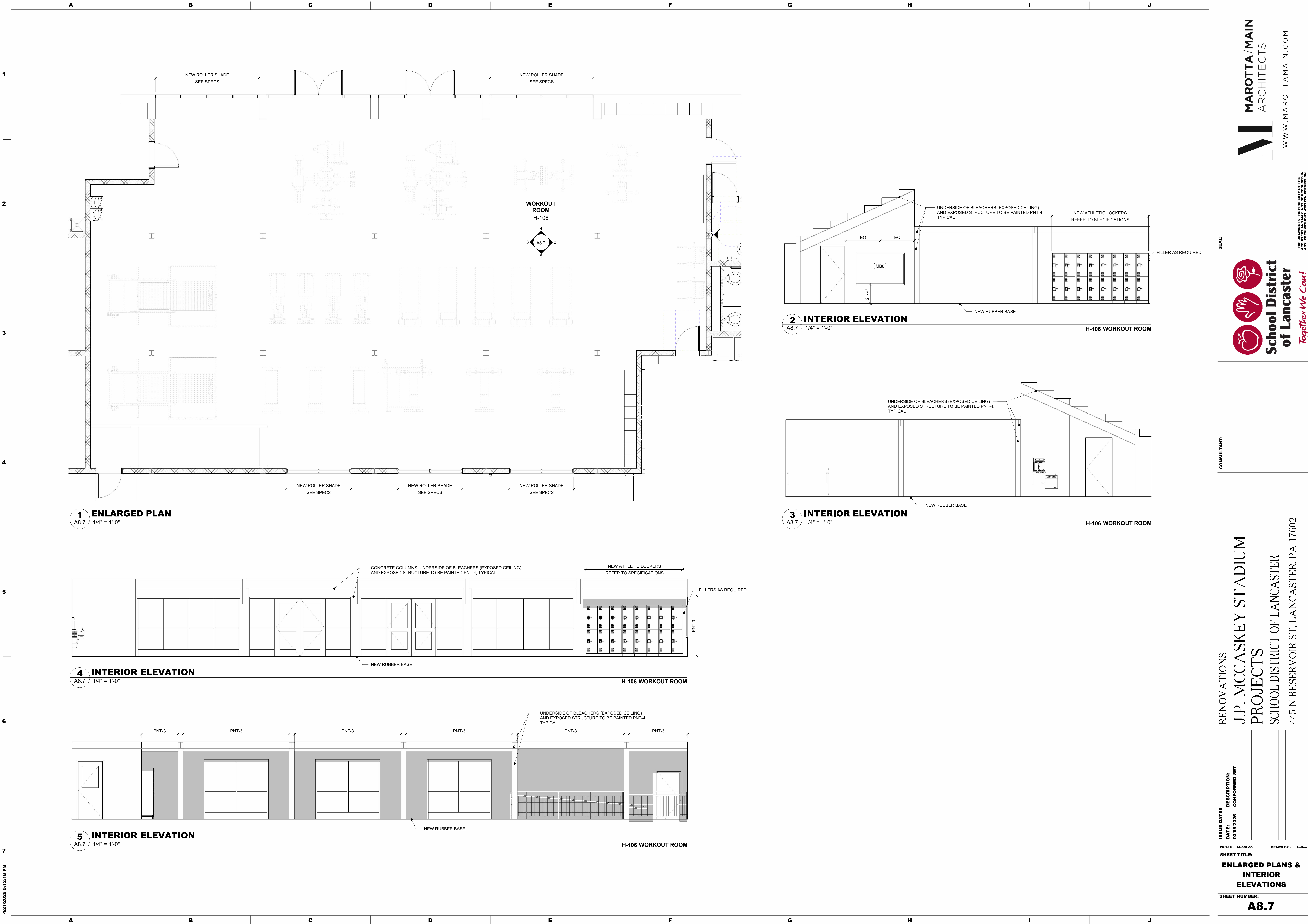
H-103 RESTROOM



**7 INTERIOR ELEVATION**  
A8.6 1/2" = 1'-0" H-103 RESTROOM

**H-103 RESTROOM**

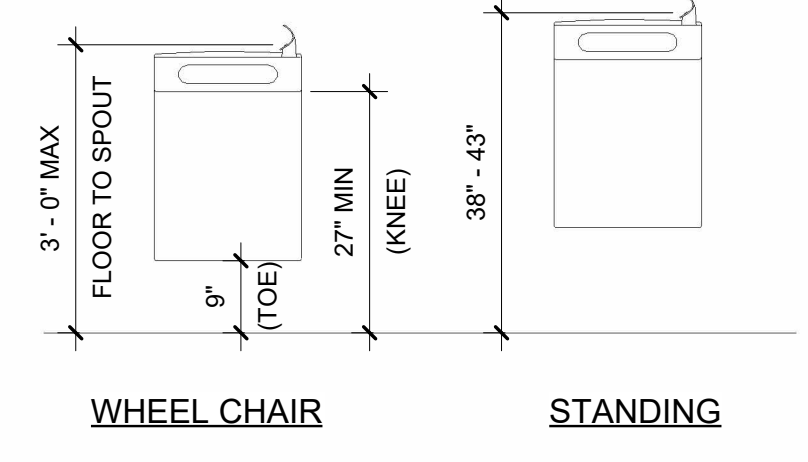
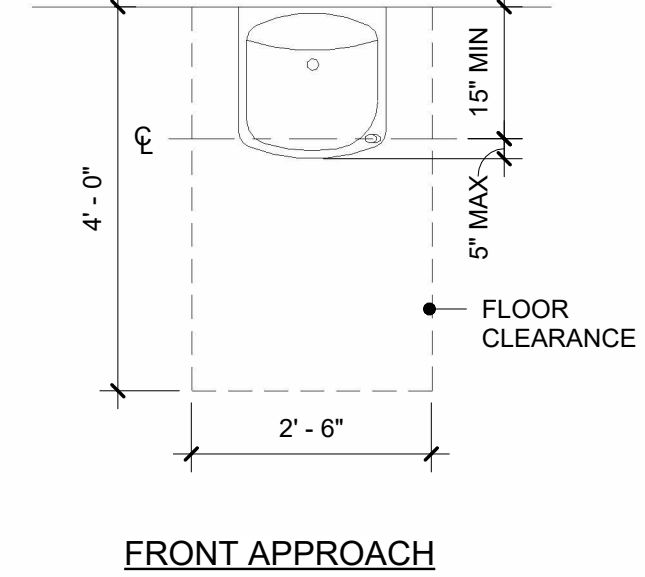
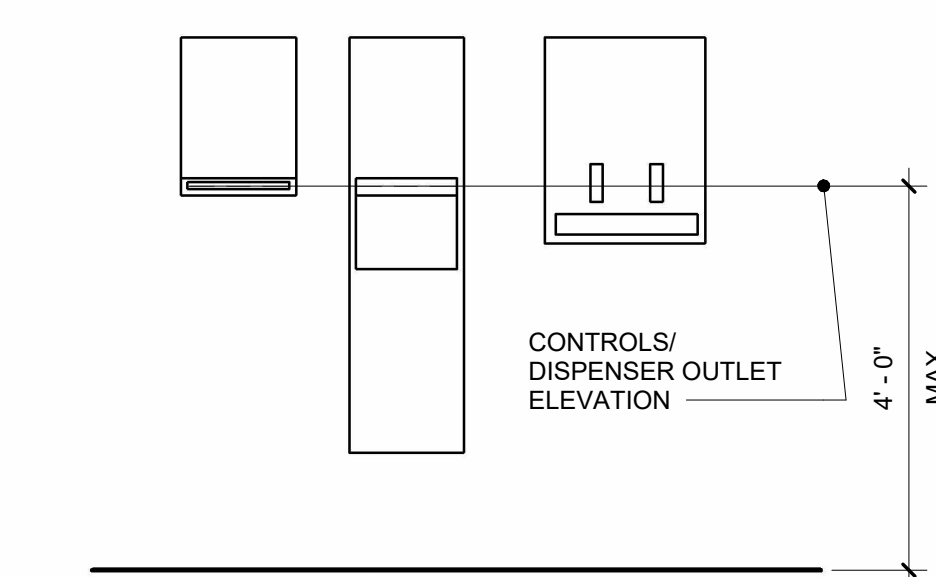













## GENERAL RESTROOM NOTES

1. CONTRACTORS SHALL FIELD VERIFY ALL DIMENSIONS AND REPORT ANY DISCREPANCIES TO THE ARCHITECT IMMEDIATELY, PRIOR TO THE COMMENCEMENT OF WORK.
2. FIXTURE SCHEDULE FOR REPRESENTATION ONLY. GC TO VERIFY ALL TOILET ROOM FIXTURES AND ACCESSORIES WITH PLUMBING CONTRACTOR AND OWNER PRIOR TO COMMENCEMENT OF WORK.
3. GWB IN RESTROOMS; WALLS AND CEILINGS TO BE MOISTURE RESISTANT.
4. TOILET ACCESSORIES TO BE ACCORDANCE WITH ANSI A117.1 - 2009.
5. FLOORS IN RESTROOMS TO HAVE A SMOOTH, HARD, NONABSORBENT SURFACE THAT EXTENDS UPWARD onto the WALLS AT LEAST 4" (IBC 2015 SECTION 1210.2.1)
6. RESTROOM WALLS WITHIN 2" OF SERVICE SINKS, URINALS AND WATER CLOSETS TO HAVE A SMOOTH, HARD, NONABSORBENT SURFACE, TO A HEIGHT OF 4'-0" ABOVE THE FLOOR (IBC 2015 SECTION 1210.2.2)
7. ALL EXPOSED FIXTURE PIPES TO BE INSULATED.

TOILET ACCESSORY SCHEDULE	
Type Mark	Description
T1	ADA Compliant Horizontal and Vertical Grab Bars
T2	Surface-Mounted Soap Dispenser
T3	Bobrick B-165 1836 Channel Frame Mirror
T4	Surface-Mounted Multi-Roll Toilet Tissue Dispenser
T5	Surface-Mounted Sanitary Napkin Disposal
T6	Surface-Mounted Paper Towel Dispenser
T7	Bobrick KB110-SSWM Surface Mounted Baby Changing Station
T8	Utility Shelf
T9	Bobrick B-672 Surface Mounted Double Robe Hook

1. PROVIDED AND INSTALLED BY GC:  
GRAB BAR SET, SANITARY NAPKIN, GLASS MIRROR, AND SURFACE MOUNTED MOP BROOM HOLDER.
2. PROVIDED BY OWNER, INSTALLED BY GC:  
TOILET TISSUE DISPENSER, SOAP DISPENSER, AND PAPER TOWEL DISPENSER.
3. GC TO PROVIDE AND INSTALL COT HOOKS ON INTERIOR SIDE OF ALL GANG RESTROOM STALL DOORS AND INTERIOR OF ALL SINGLE USE RESTROOM DOORS. MOUNTING HEIGHT MAXIMUM OF 48" AFF BOBRICK COT HOOK B-672 BASIS OF DESIGN.
4. GC TO PROVIDE ALL REQD. BLOCKING FOR ACCESSORIES.

 **School District  
of Lancaster**

*Together We Can!*

**MAROTTA/MAIN  
ARCHITECTS**

**www.marottamain.com**

THIS DRAWING IS THE PROPERTY OF THE  
ARCHITECT. IT IS TO BE USED ONLY FOR THE  
INTENDED PROJECT AND NOT FOR REUSE OR  
REPRODUCTION WITHOUT THE PERMISSION  
OF THE ARCHITECT.

RENOVATIONS  
J.P. MCCASKEY STADIUM  
PROJECTS  
SCHOOL DISTRICT OF LANCASTER  
445 N RESERVOIR ST, LANCASTER, PA 17602

[illegible]

PROJ #: 24-SDL-03      DRAWN BY: Author

---

**SHEET TITLE:**

**ENLARGED PLAN &  
ACCESSIBILITY  
DETAILS**

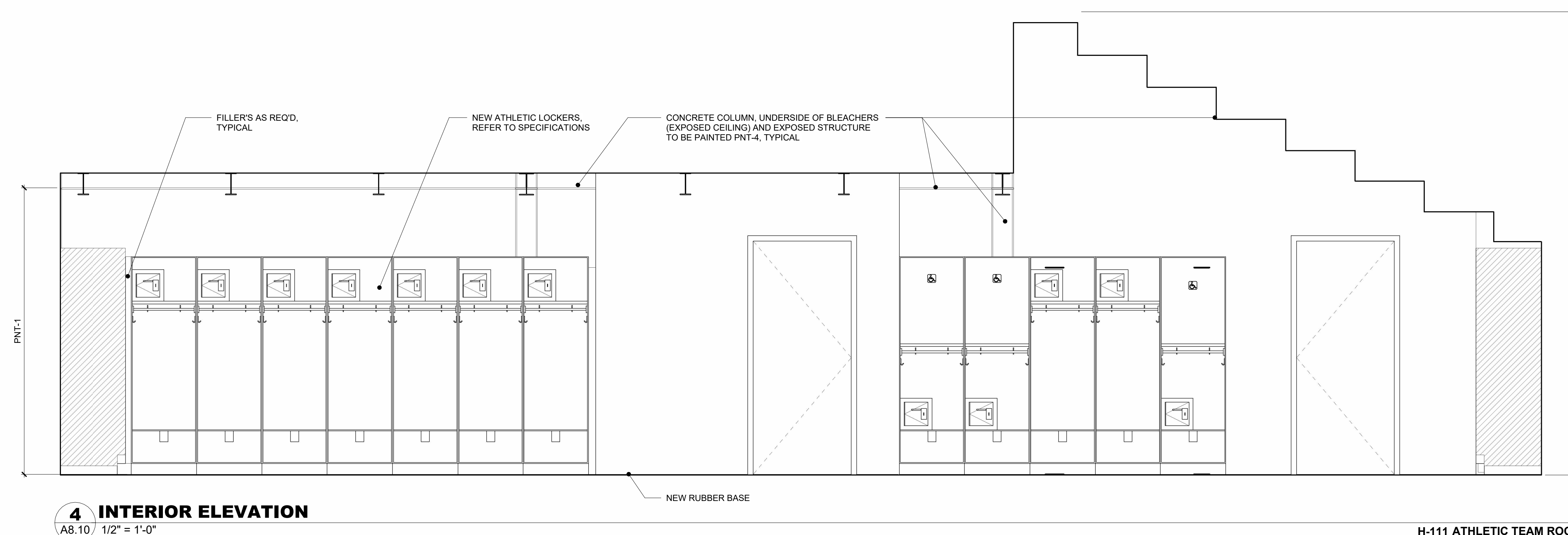
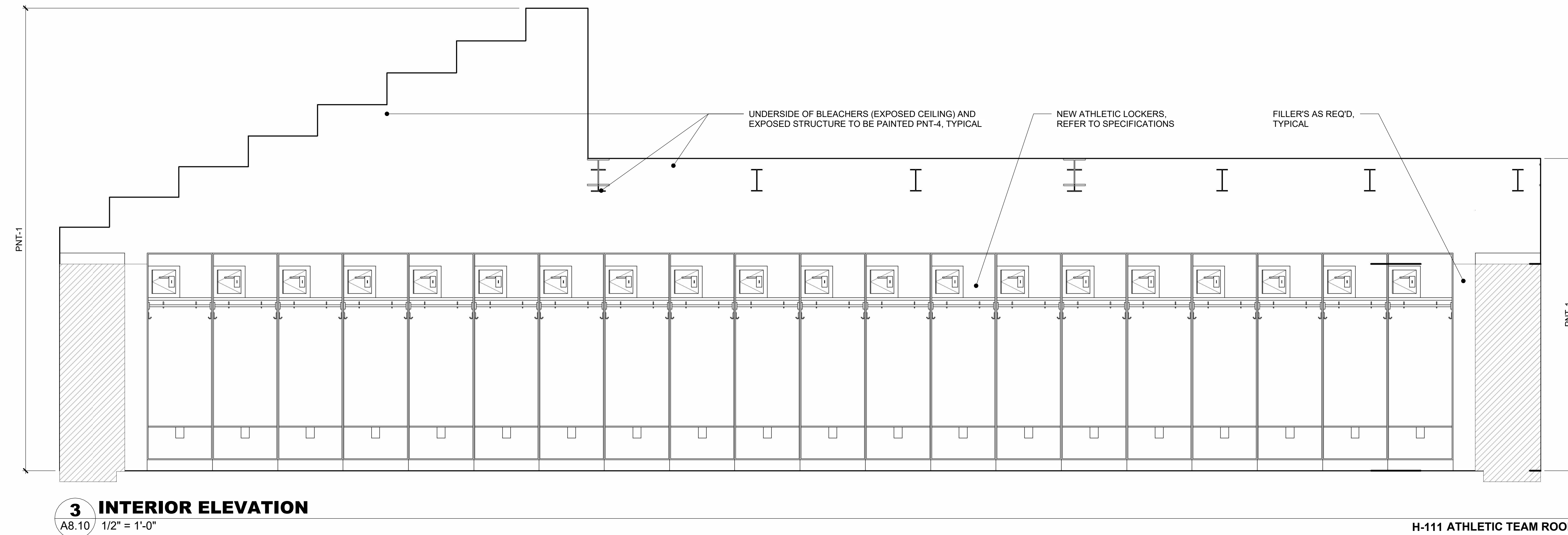
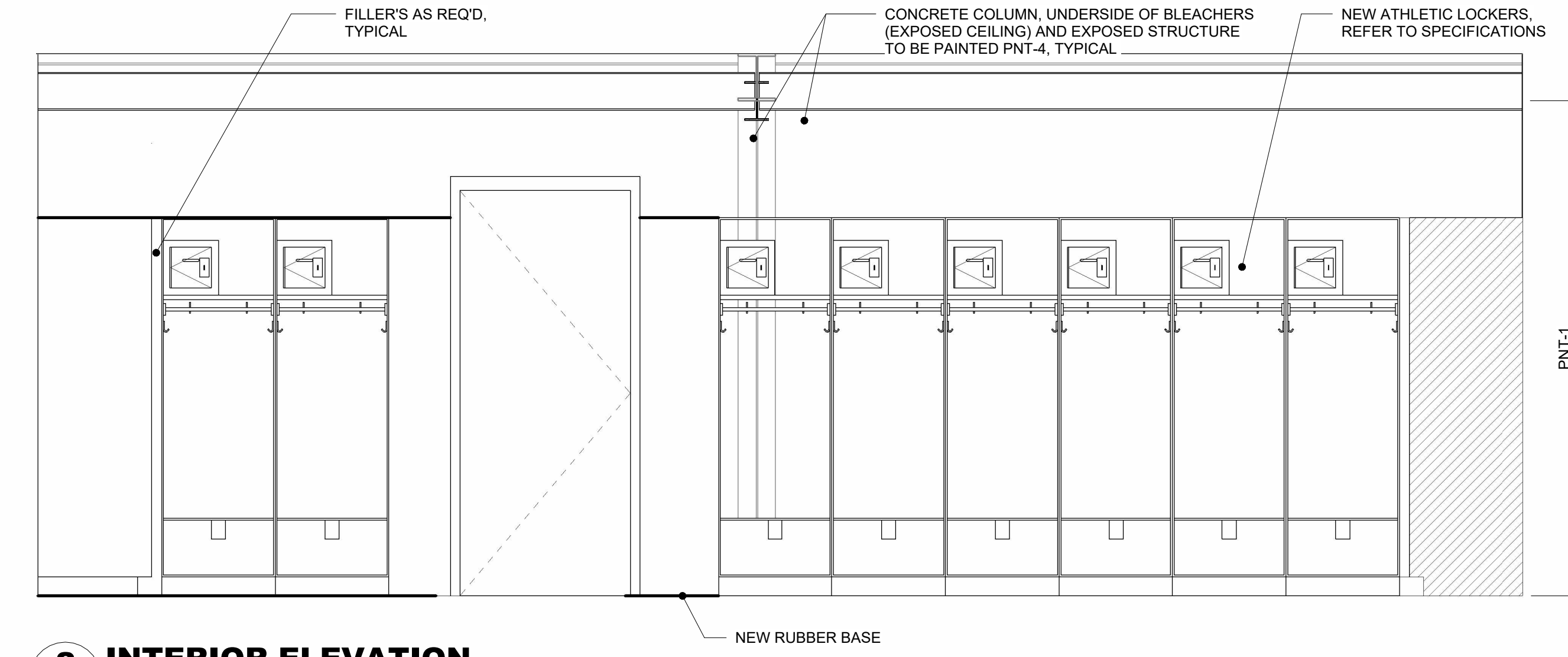
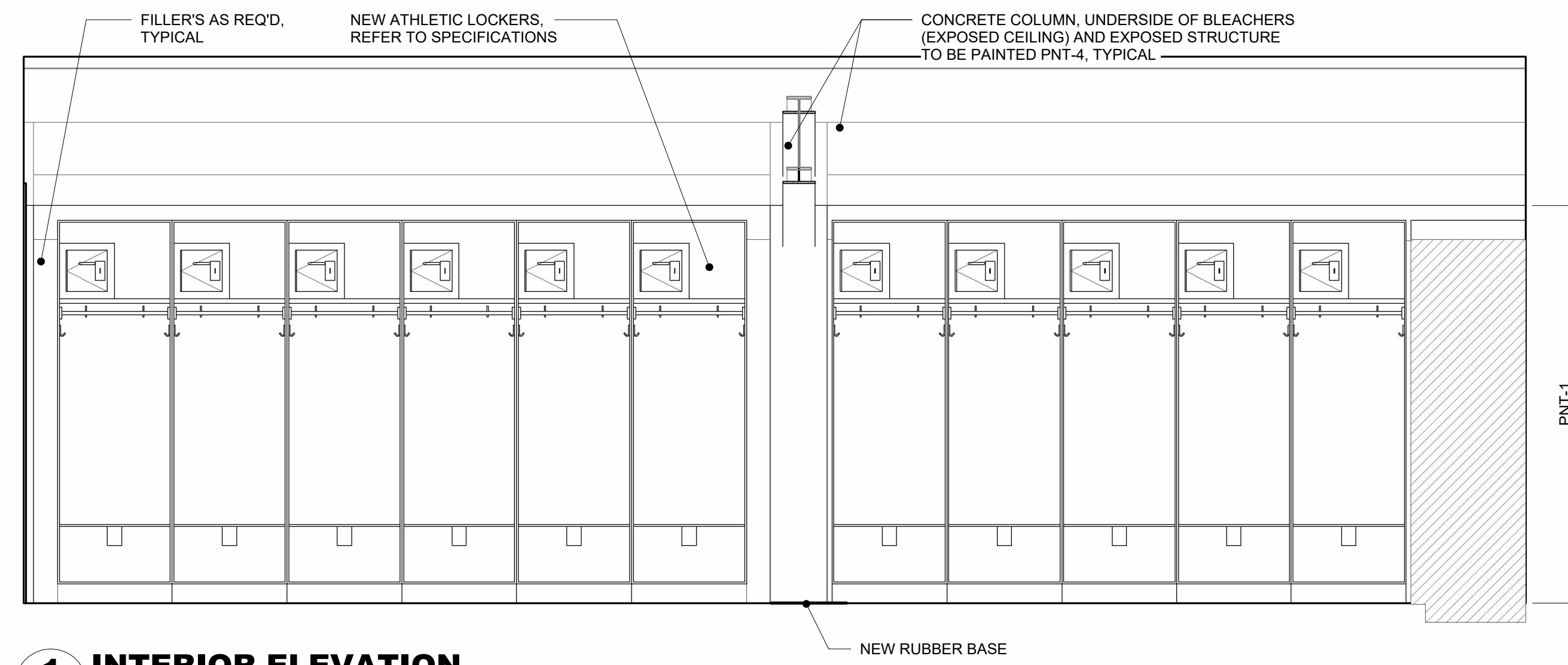
---

**SHEET NUMBER:**

**A8.9**

## CONFORMED SET



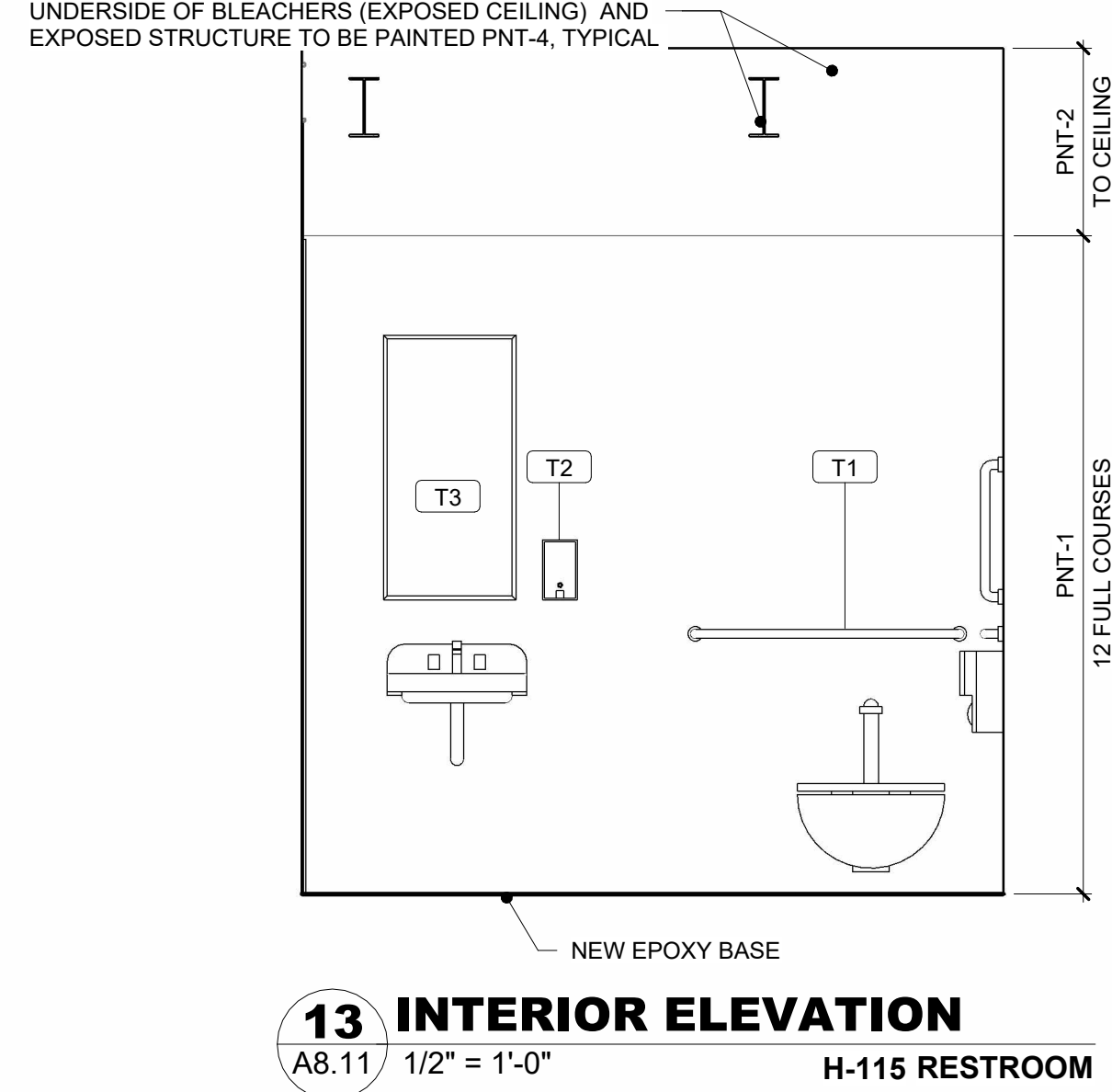
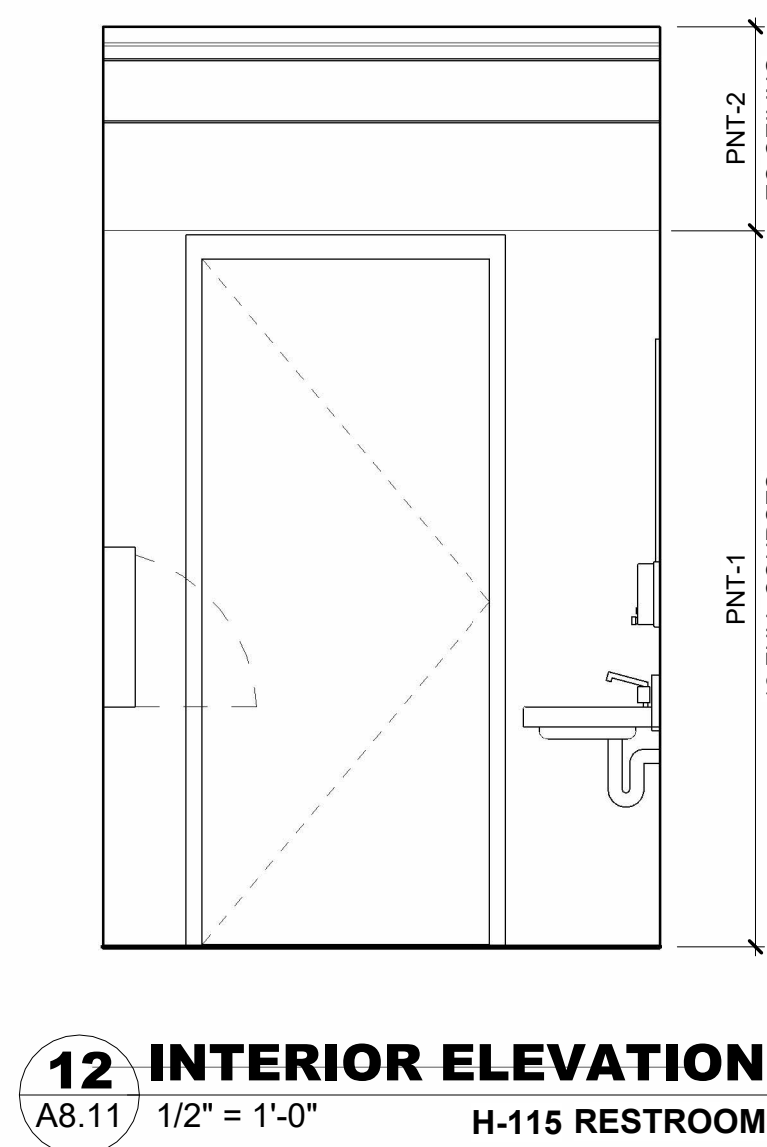
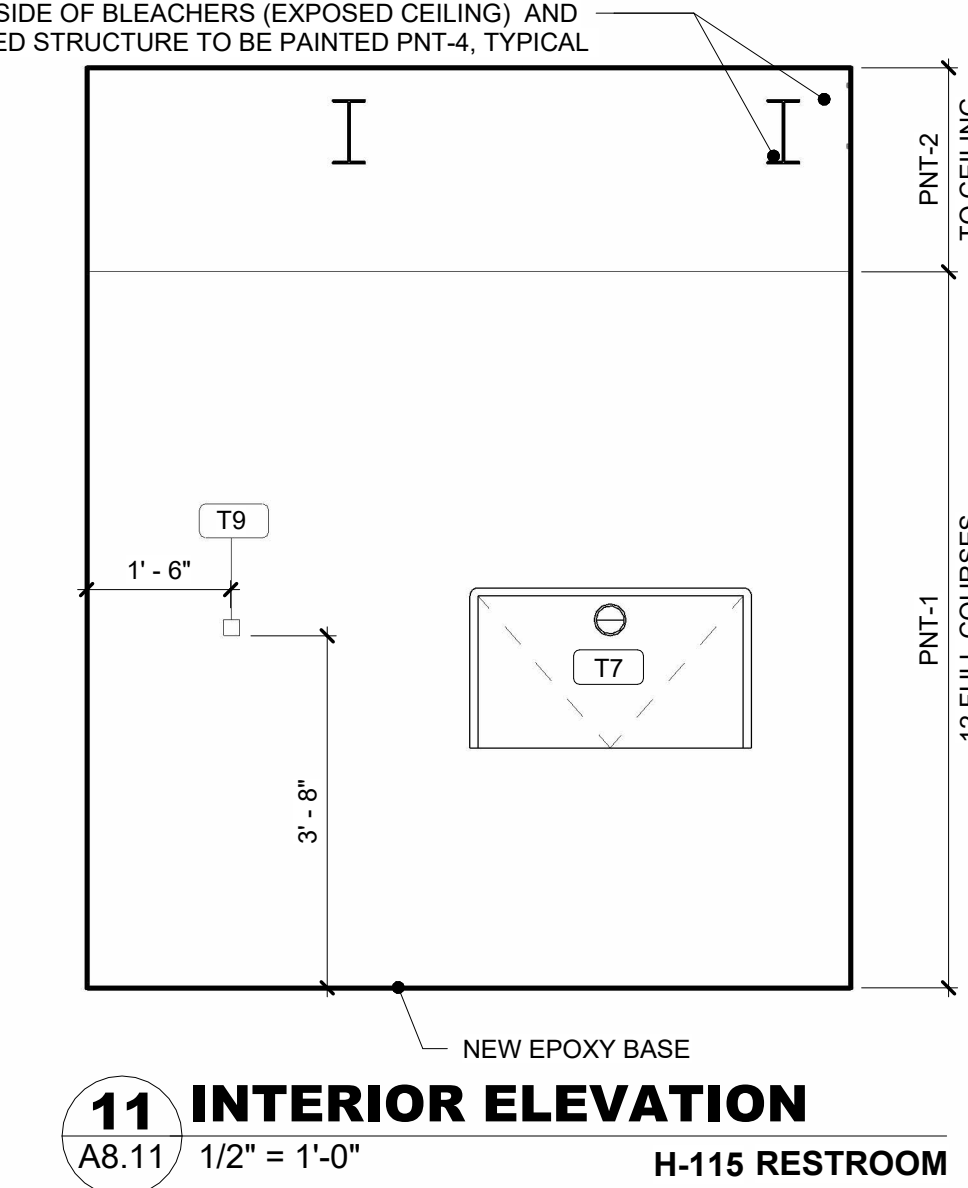
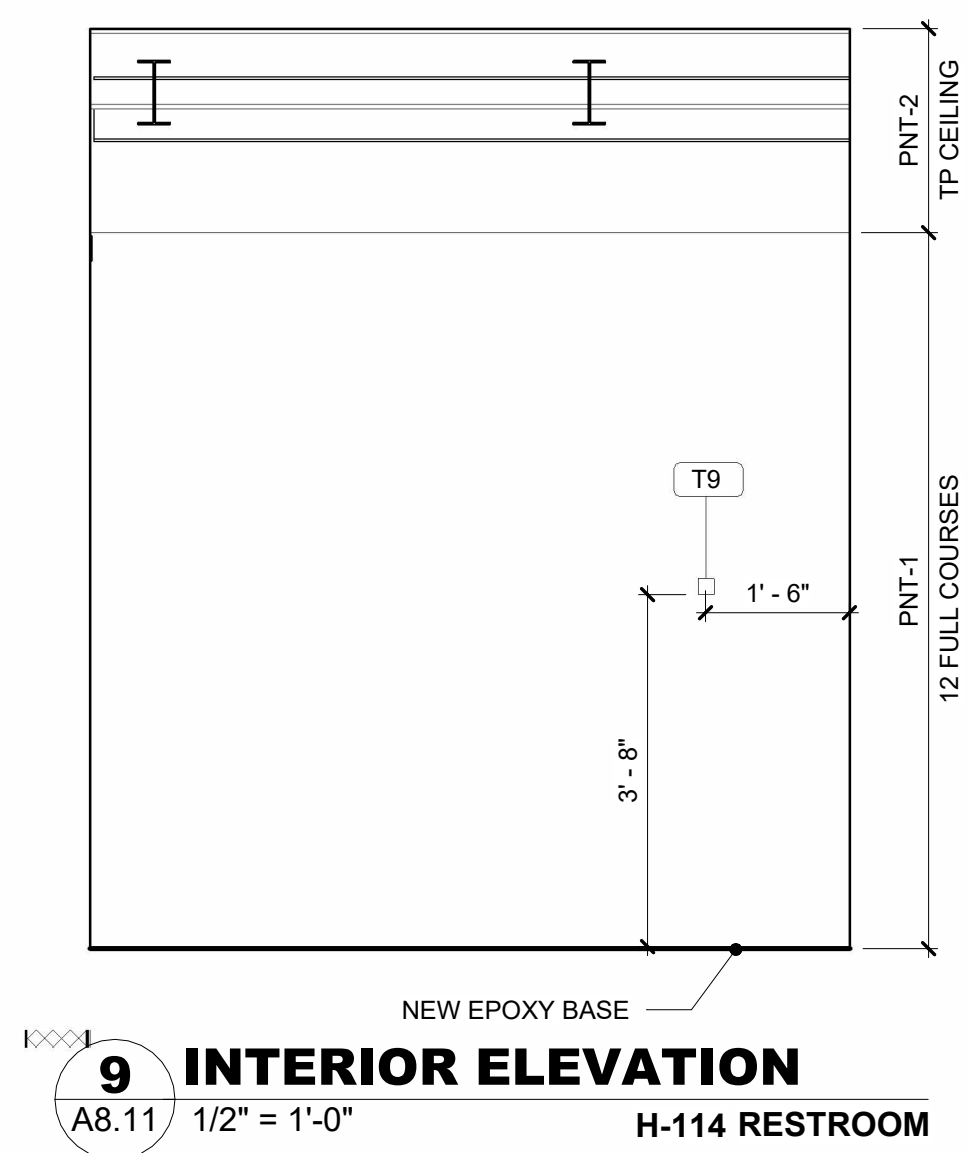
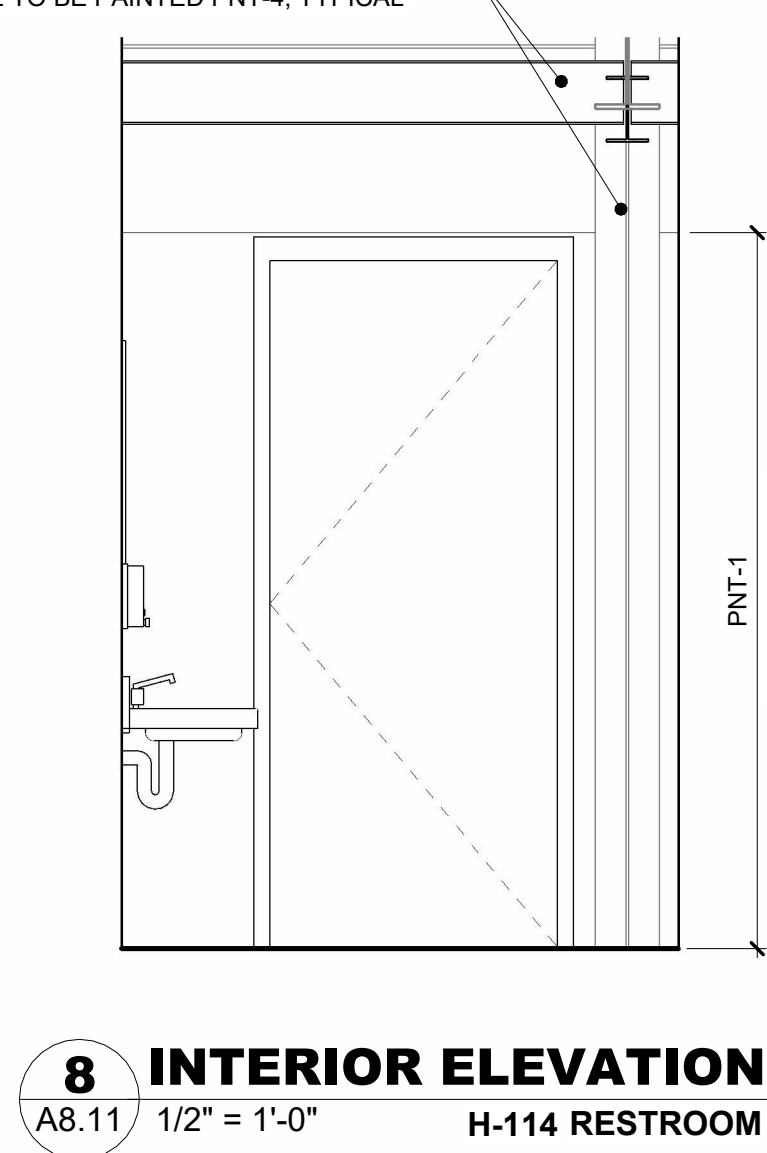
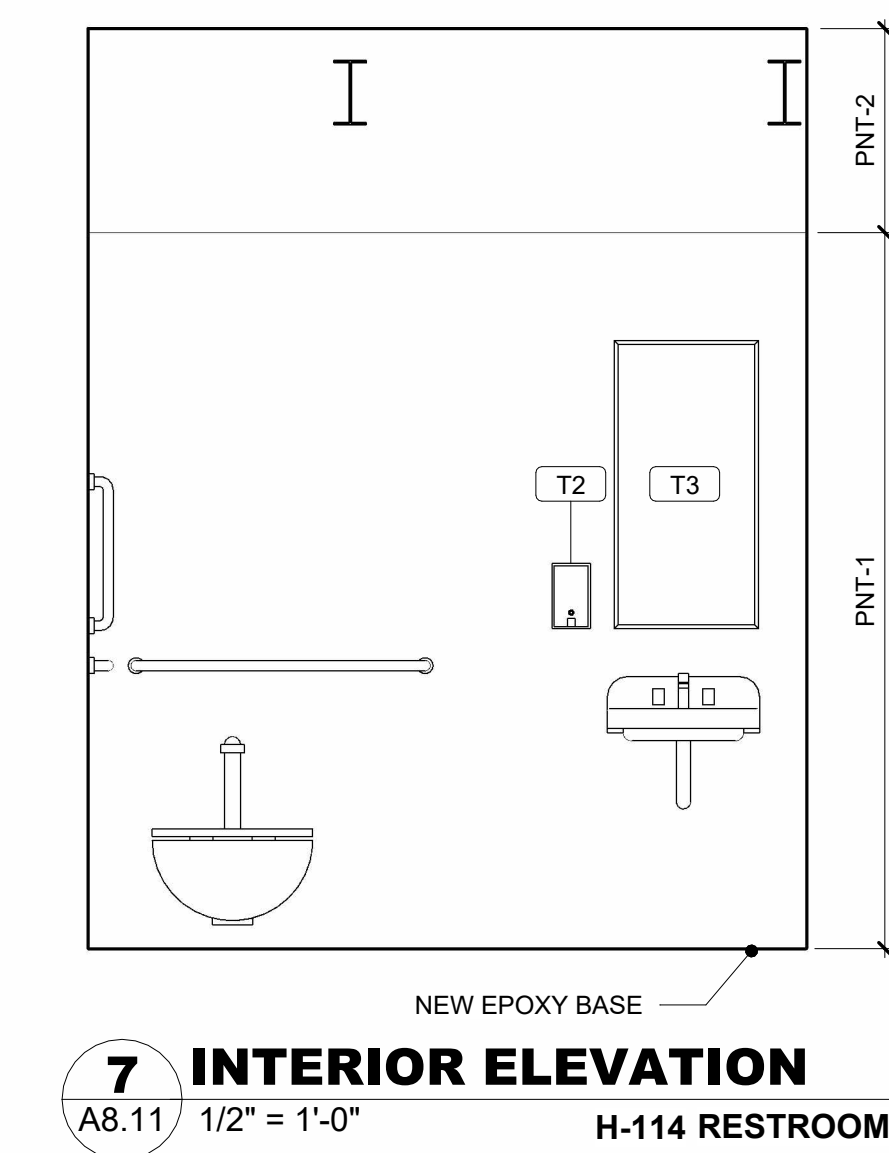
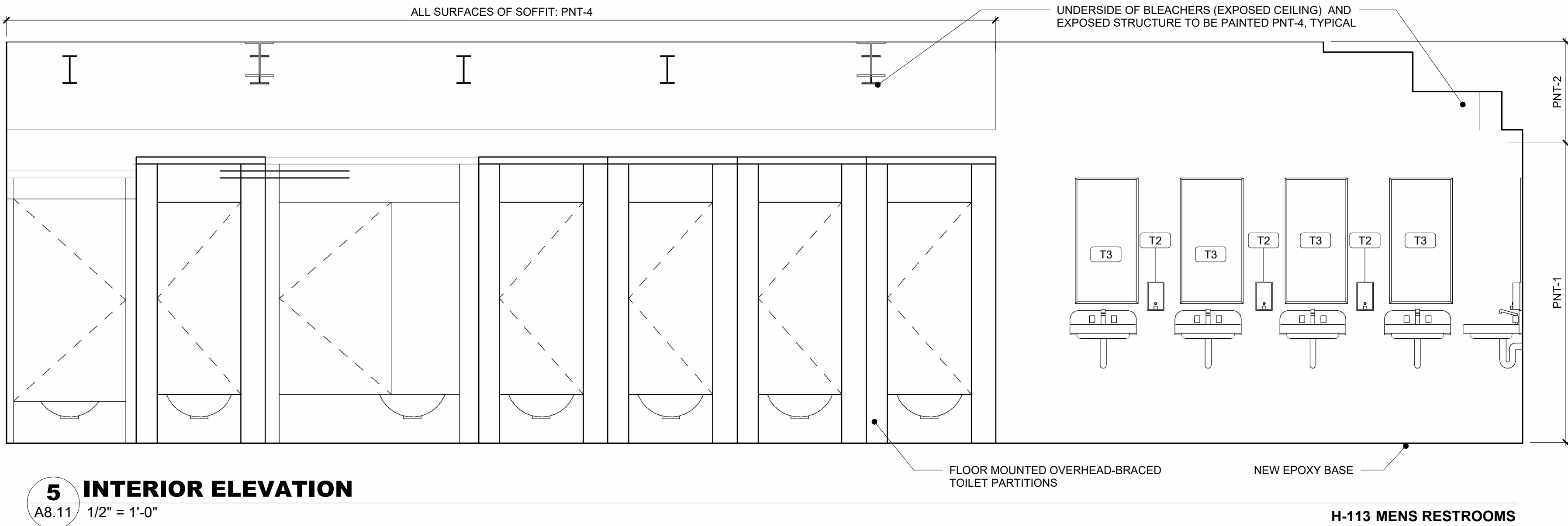
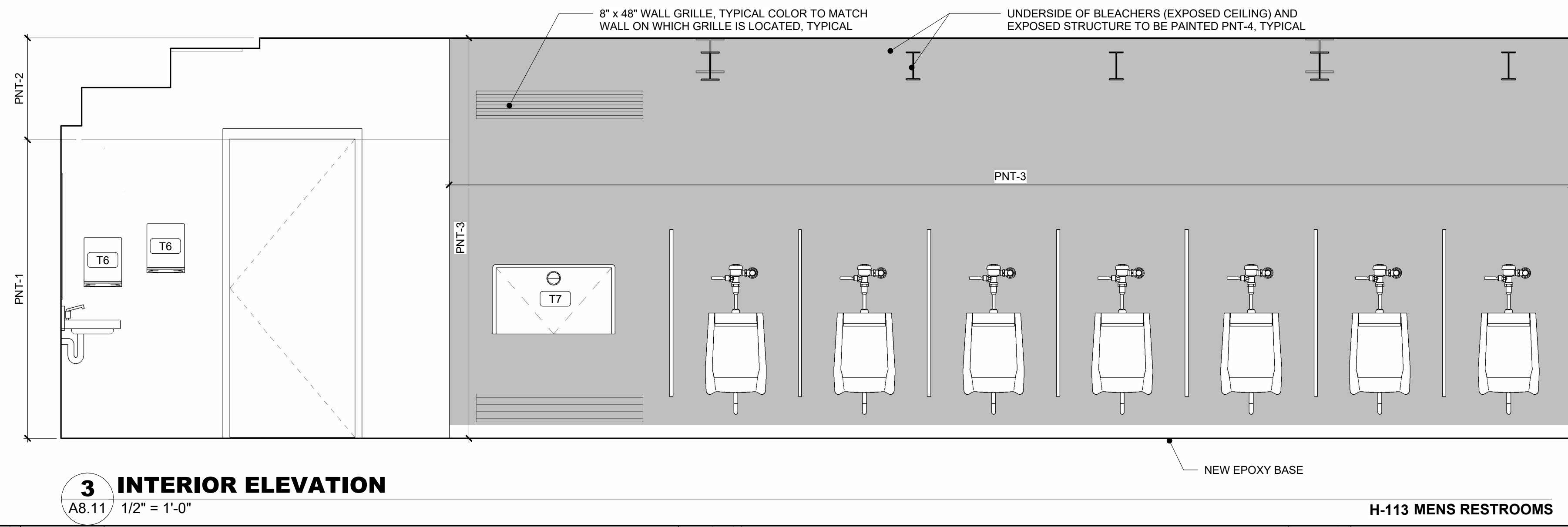
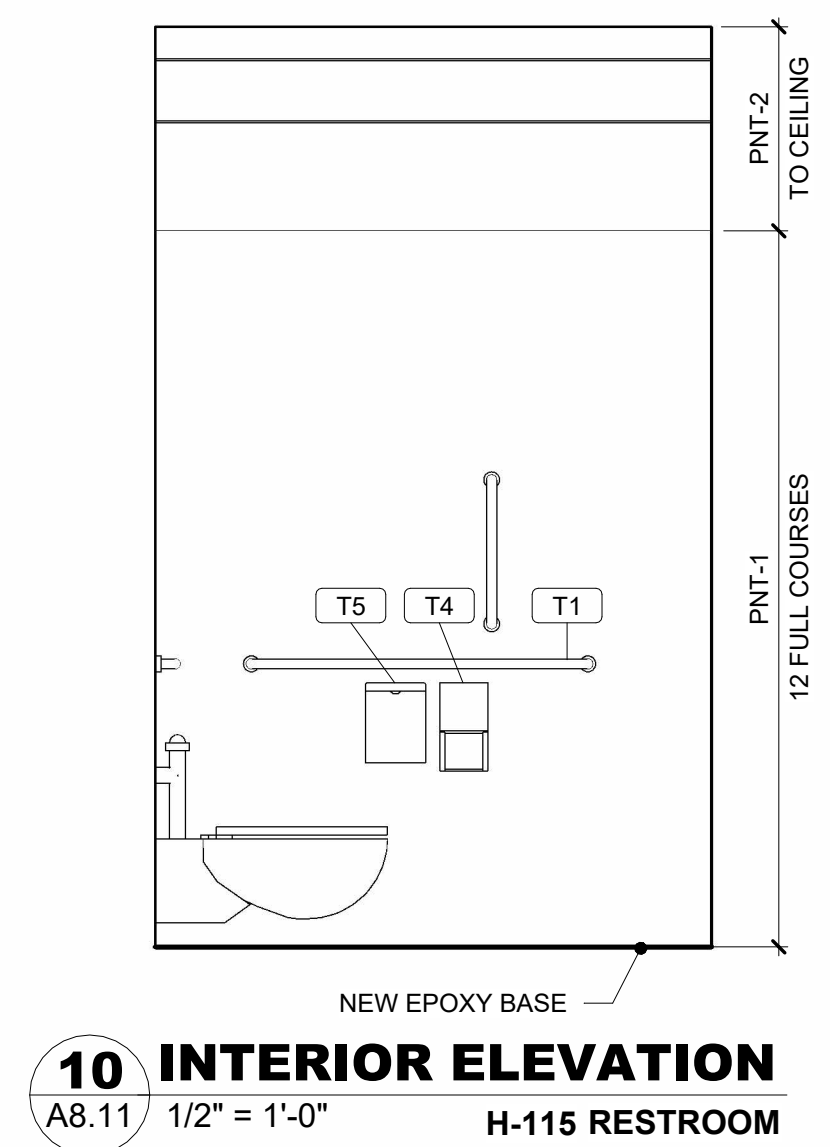
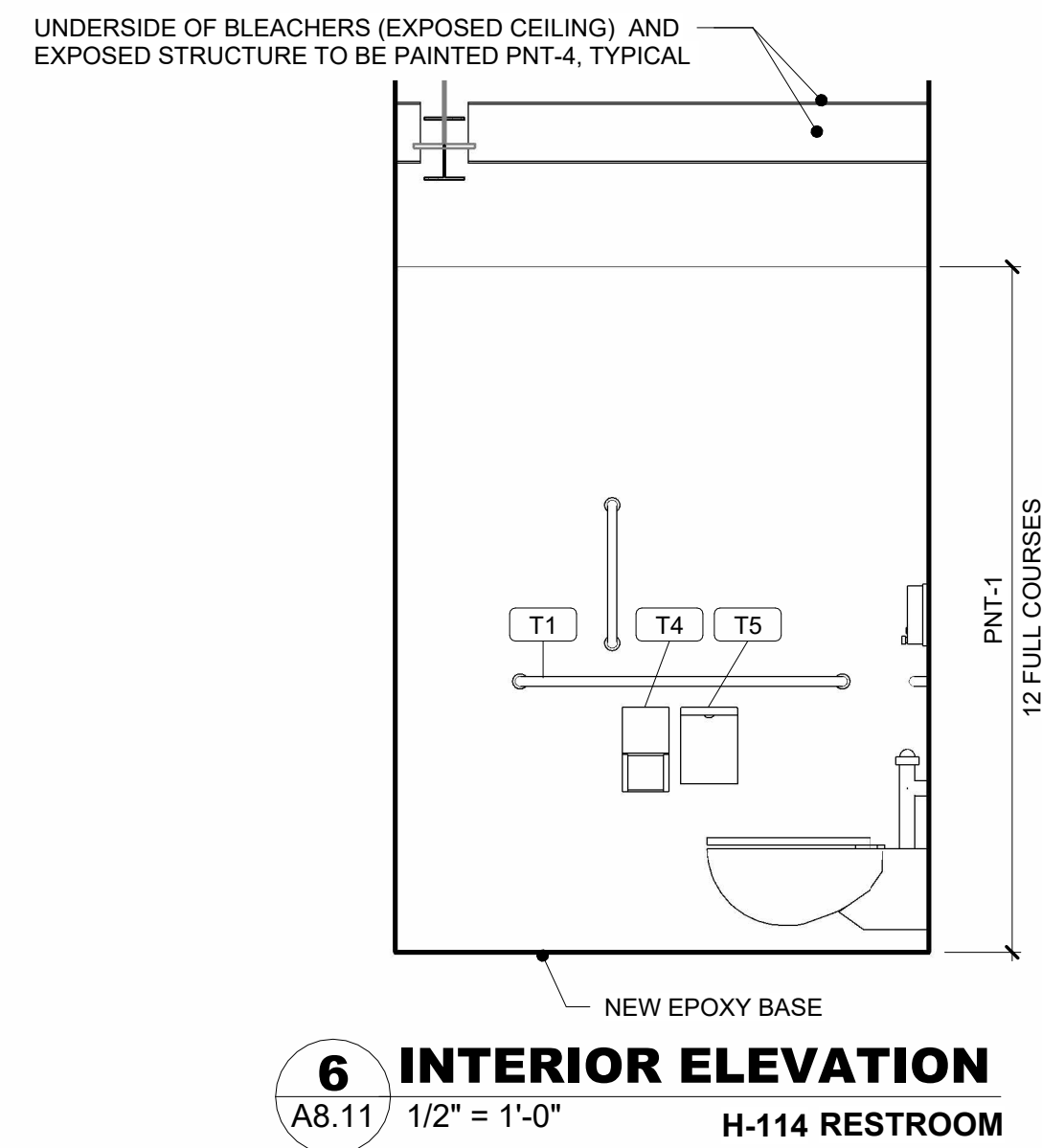
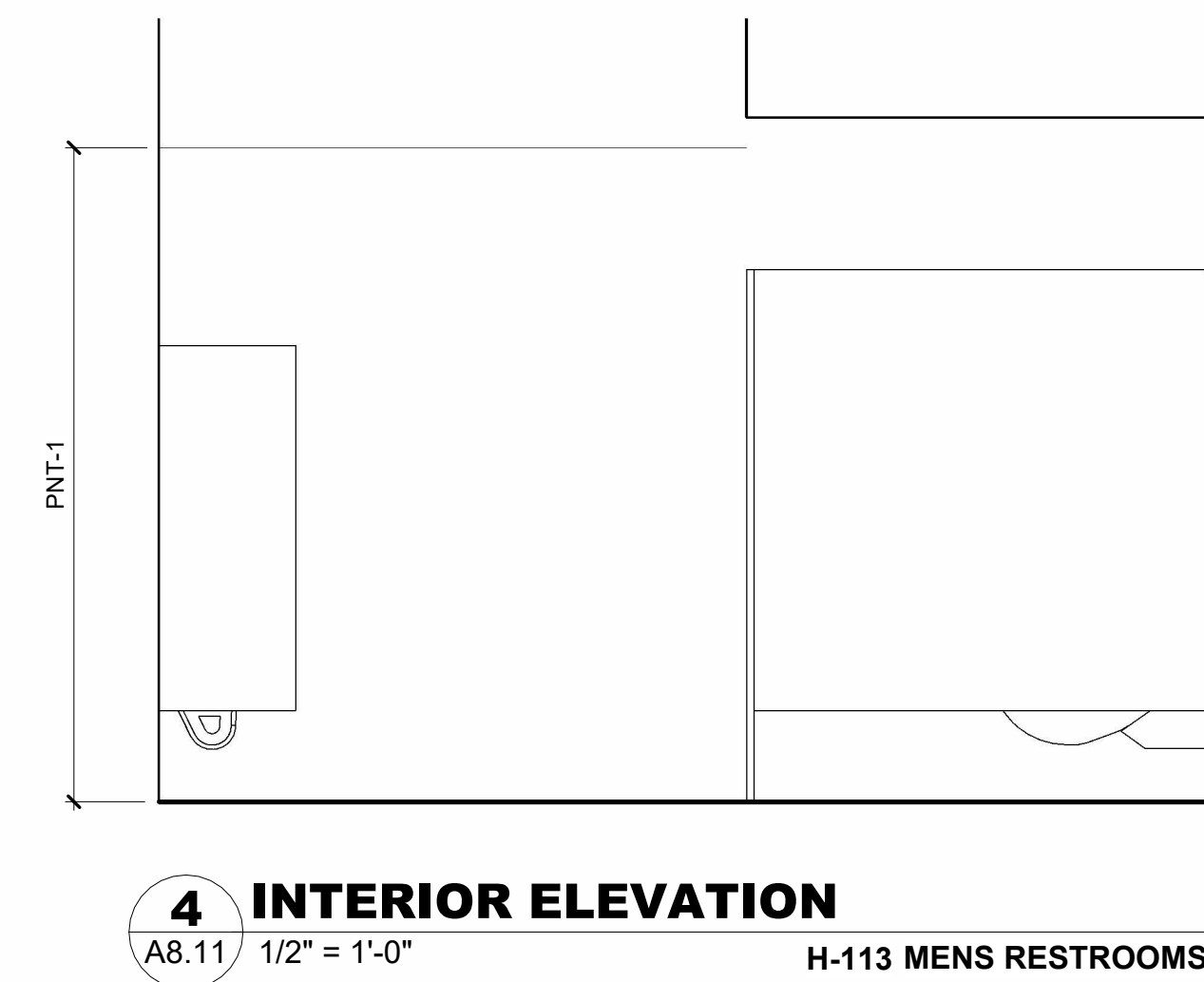
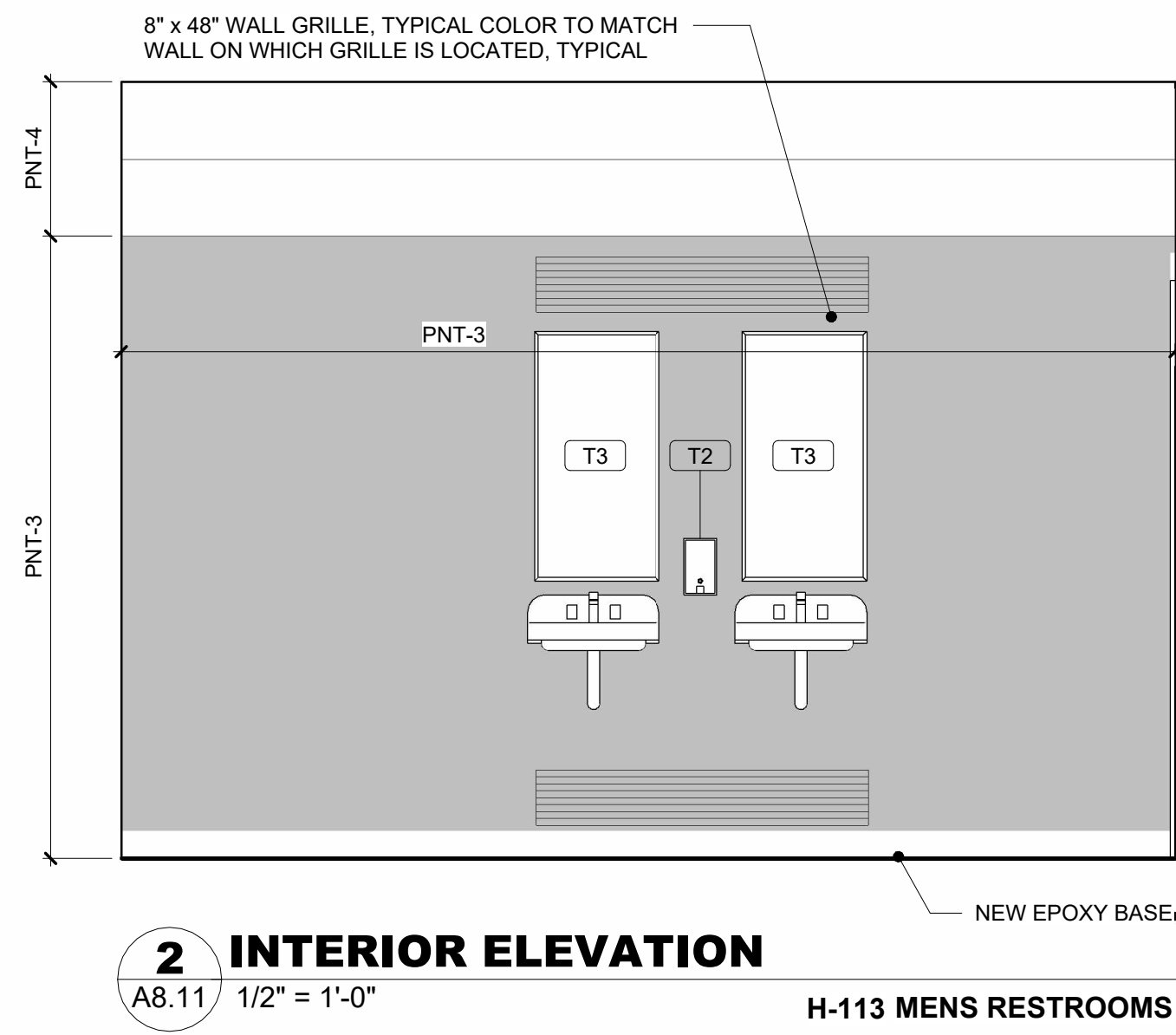
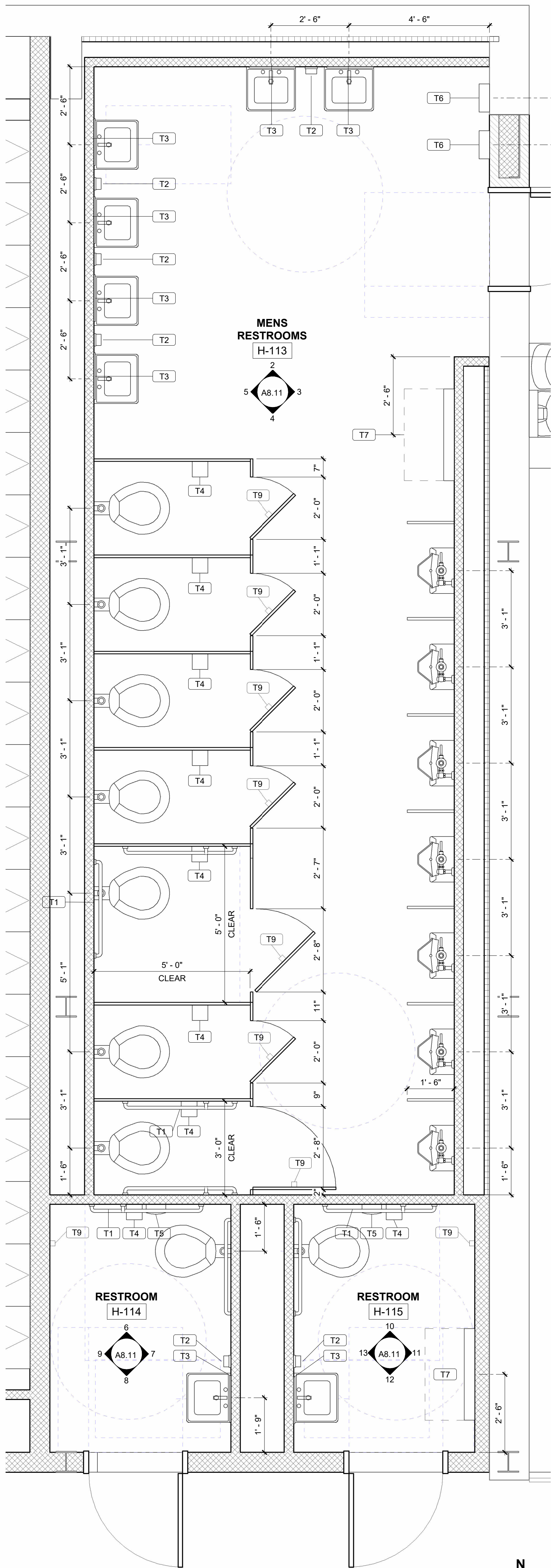




4/21/2025 5:12:35 PM

1  
2  
3  
4  
5  
6  
7

A B C D E F G H I J



**MAROTTA/MAIN ARCHITECTS**

WWW.MAROTTAMAIN.COM

**School District of Lancaster**

Together We Can!

**RENOVATIONS**

**J.P. MCCASKEY STADIUM**

**PROJECTS**

**SCHOOL DISTRICT OF LANCASTER**

445 N RESERVOIR ST, LANCASTER, PA 17602

**ISSUE DATES**

DATE	DESCRIPTION
03/05/2025	CONFORMED SET

**PROJ #1: 24-50L-03**

**DRAWN BY: DRW**

**SHEET TITLE:**

**ENLARGED PLANS & INTERIOR ELEVATIONS**

**SHEET NUMBER:**

**A8.11**

**CONFORMED SET**

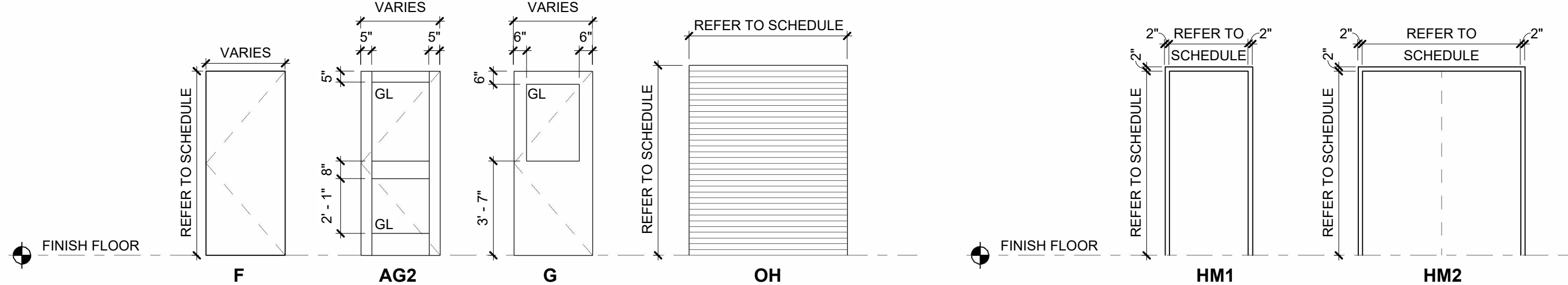


4/21/2025 5:12:41 PM

A				B				C				D			
DOOR SCHEDULE															
DOOR NUMBER	DOOR			DOOR TYPE	DOOR MATERIAL	FIRE RATING	FRAME					COMMENTS			
	SIZE		HEAD				JAMB	SILL							
	LEAF 1	LEAF 2							FRAME TYPE	FRAME MATERIAL					
exH-107.3			7'- 4"												
exH-107.4			7'- 4"												
exH-107.5			1'- 0 19/32"												
H-101	3'- 0"		7'- 2"	F	HM		HM1	HM	10/A9.1	9/A9.1	23/A9.1				
H-102	3'- 0"		7'- 2"	F	HM		HM1	HM	3/A9.1	4/A9.1	23/A9.1				
H-103	3'- 0"		7'- 2"	F	HM		HM1	HM	3/A9.1	4/A9.1	23/A9.1				
H-104	3'- 0"	3'- 0"	7'- 2"	F	WD		HM2	HM	3/A9.1	4/A9.1					
H-105.1.1	2'- 10"	2'- 10"	7'- 2"	F	HM		HM2	HM	11/A9.1	2/A9.1	23/A9.1				
H-105.1.2	3'- 0"		7'- 2"	F	WD		HM1	HM	5/A9.1	4/A9.1					
H-106.1	3'- 0"	3'- 0"	7'- 2"	AG2	ALUM		AL2	ALUM	2/A3.2	16/A9.1	23/A9.1				
H-106.2	3'- 0"	3'- 0"	7'- 2"	AG2	ALUM		AL2	ALUM	2/A3.2	16/A9.1	23/A9.1				
H-106.3	3'- 0"		7'- 2"	F	WD		HM2	HM	3/A9.1	4/A9.1					
H-106.4	3'- 0"		7'- 2"	F	HM		HM1	HM	3/A9.1	4/A9.1	23/A9.1				
H-107.1	3'- 0"		7'- 2"	G	WD		HM1	HM	3/A9.1	4/A9.1					
H-107.2	3'- 0"		7'- 2"	F	HM		HM1	HM	5/A9.1	4/A9.1	22/A9.1				
H-108	2'- 10"	2'- 10"	7'- 2"	F	HM		HM2	HM	11/A9.1	2/A9.1	23/A9.1				
H-109	3'- 0"		7'- 2"	F	WD		HM1	HM	3/A9.1	4/A9.1				12"x12" LOUVER	
H-110	3'- 0"		7'- 2"	F	WD		HM1	HM	3/A9.1	4/A9.1				12"x12" LOUVER	
H-111.1	3'- 0"		7'- 2"	F	WD		HM1	HM	3/A9.1	4/A9.1					
H-111.2	3'- 0"		7'- 2"	F	HM		HM1	HM	5/A9.1	4/A9.1	23/A9.1				
H-112	3'- 0"		7'- 2"	F	WD		HM1	HM	3/A9.1	4/A9.1				12"x12" LOUVER	
H-113	3'- 0"		7'- 2"	F	HM		HM1	HM	10/A9.1	9/A9.1	23/A9.1				
H-114	3'- 0"		7'- 2"	F	HM		HM1	HM	5/A9.1	4/A9.1	23/A9.1				
H-115	3'- 0"		7'- 2"	F	HM		HM1	HM	5/A9.1	4/A9.1	23/A9.1				
H-202.1	3'- 0"		7'- 2"	F	HM	90 MIN	HM1	HM	3/A9.1	4/A9.1					
H-203	3'- 0"		7'- 2"	F	HM		HM1	HM	12/A9.1	13/A9.1					
H-203.2	3'- 0"		7'- 2"	F	HM		HM1	HM	3/A9.1	4/A9.1					
V-101	3'- 0"		7'- 2"	F	WD		HM1	HM	3/A9.1	4/A9.1				12"x12" LOUVER	
V-102	3'- 0"		7'- 2"	F	WD		HM1	HM	3/A9.1	4/A9.1					
V-103.1.3			7'- 2"	F	HM		HM1	HM	3/A9.1	4/A9.1					
V-103.2	4'- 0"	4'- 0"	7'- 2"	F	HM		HM2	HM	1/A9.1	2/A9.1	23/A9.1				
V-104	3'- 0"		7'- 2"	F	HM		HM1	HM	6/A9.1	7/A9.1	23/A9.1				
V-105	3'- 0"		7'- 2"	F	HM		HM1	HM	8/A9.1	9/A9.1	23/A9.1				
V-106	3'- 0"		7'- 2"	F	HM		HM1	HM	8/A9.1	9/A9.1	23/A9.1				
V-107	3'- 0"		7'- 2"	F	HM		HM1	HM	6/A9.1	7/A9.1	23/A9.1				
V-107.1	3'- 0"		7'- 0"	F	HM		HM1	HM	3/A9.1	4/A9.1				12"x12" LOUVER	
V-108	4'- 0"	4'- 0"	7'- 2"	F	HM		HM2	HM	3/A9.1	4/A9.1					
V-111.1	4'- 0"	4'- 0"	7'- 2"	F	HM		HM2	HM	1/A9.1	2/A9.1	23/A9.1				
V-111.2	3'- 0"		7'- 2"	F	HM		HM1	HM	3/A9.1	4/A9.1					

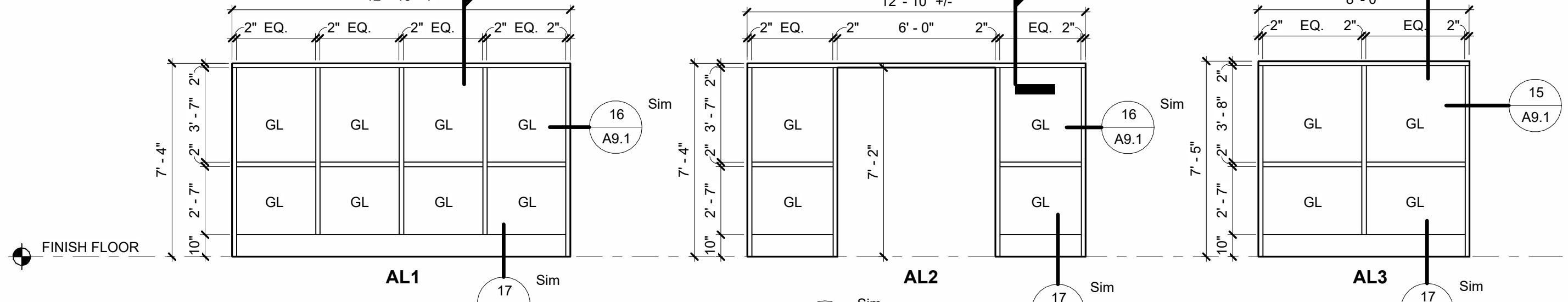
DOOR SCHEDULE - OVERHEAD DOORS										
DOOR NUMBER	WIDTH	DOOR			FIRE RATING	FRAME			COMMENTS	
		SIZE HEIGHT	DOOR TYPE	DOOR MATERIAL		HEAD	JAMB	SILL		
H-105.1	9'- 4"	8'- 0"	OH	STEEL INSUL		8/A9.1	7/A9.1	25/A9.1	OH COILING DOOR	
H-202.2	9'- 4"	10'- 0"	OH	STEEL INSUL		8/A9.1	7/A9.1	25/A9.1	OH COILING DOOR	
H-202.3	9'- 4"	10'- 0"	OH	STEEL INSUL		8/A9.1	7/A9.1	25/A9.1	OH COILING DOOR	

- LEGEND**
- GL GLASS PANEL  
MP METAL PANEL  
OV OUTSUVING VENT UNIT  
TW TRANSLUCENT WALL PANEL  
M.O. MASONRY OPENING
- GENERAL DOOR AND FRAME NOTES**
- ALL DOORS LOCATED AT CORNERS IN MASONRY WALLS SHALL BE LOCATED 8" FROM ADJACENT PERPENDICULAR WALL TO OUTSIDE OF FRAME UNLESS DIMENSIONED OTHERWISE
  - ALL DOORS LOCATED AT CORNERS IN STUD WALLS SHALL BE LOCATED 4" FROM ADJACENT PERPENDICULAR WALL TO OUTSIDE OF FRAME UNLESS DIMENSIONED OTHERWISE
  - UNDERCUT DOORS AS REQUIRED TO OPERATE SMOOTHLY OVER FINISHED FLOOR. MAXIMUM UNDERCUT SHALL BE 1/4", UNLESS NOTED OTHERWISE. FINISH BOTTOM OF DOORS AFTER UNDERCUTTING.

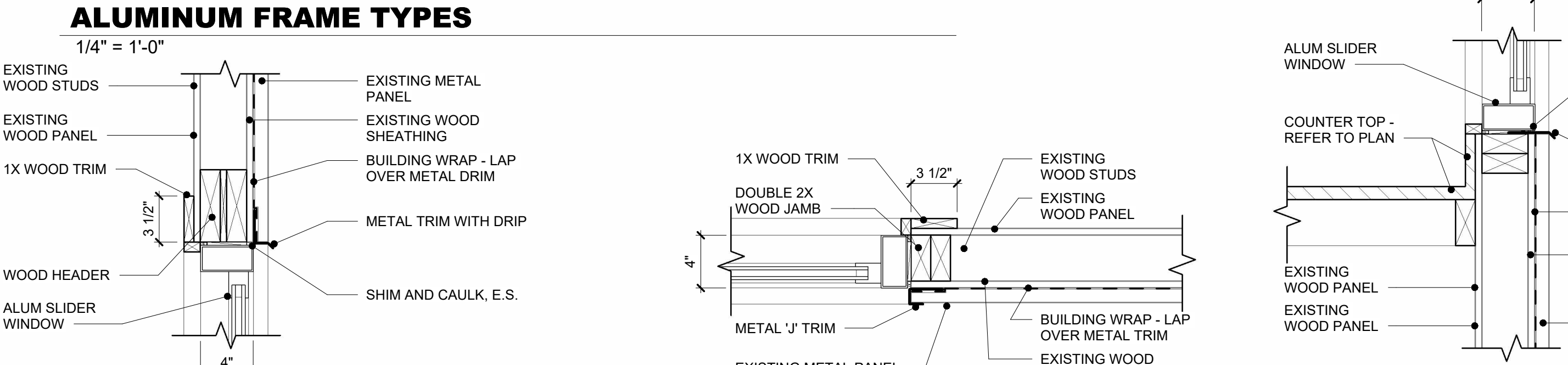
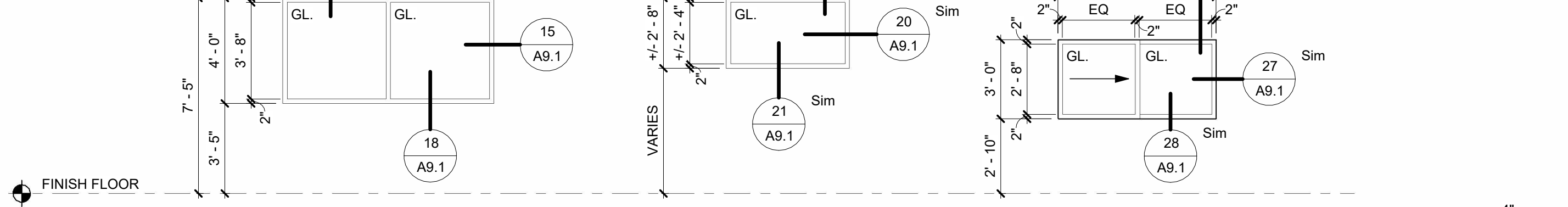


**DOOR TYPES**  
1/4" = 1'-0"

**HOLLOW METAL FRAME TYPES**  
1/4" = 1'-0"



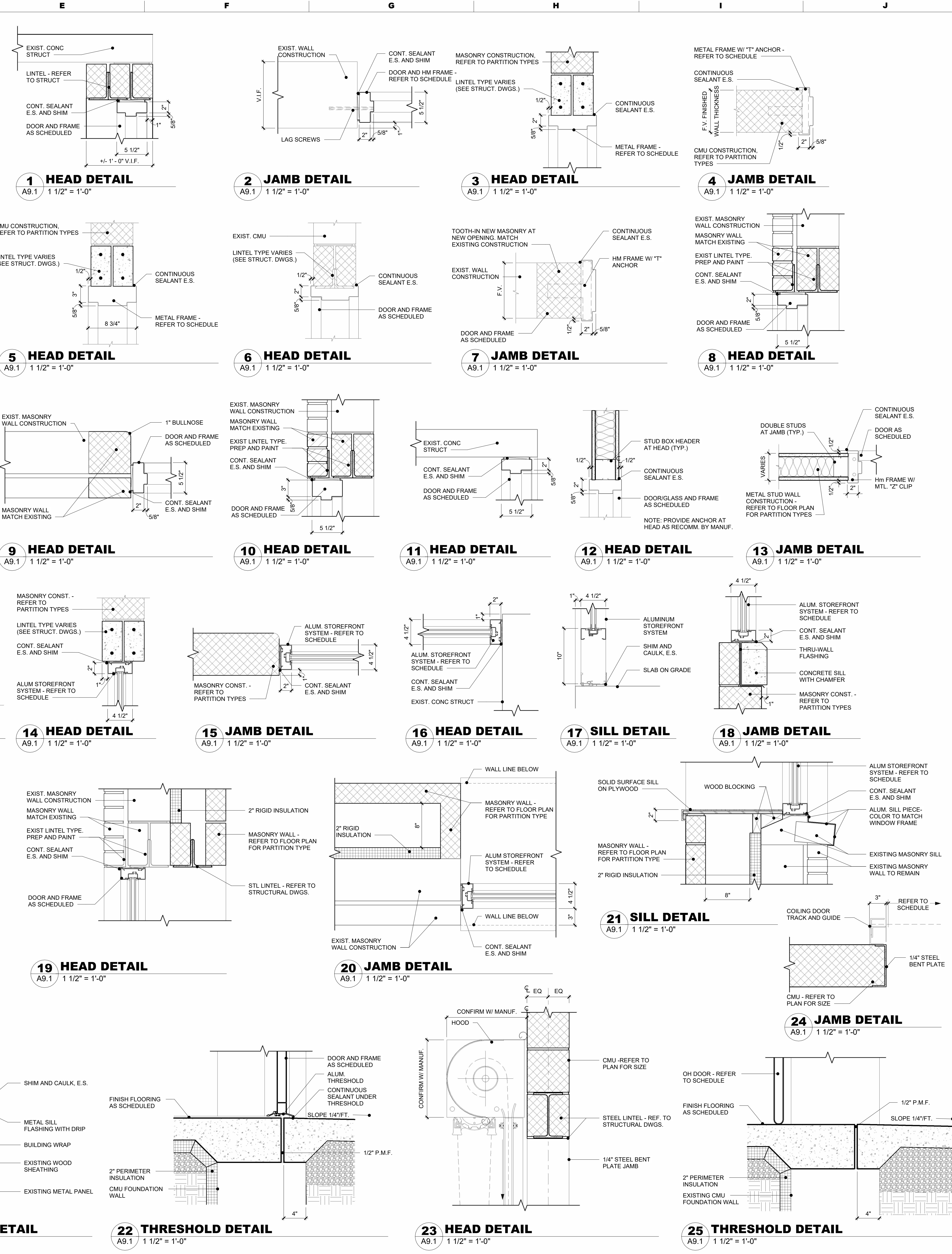
**ALUMINUM FRAME TYPES**  
1/4" = 1'-0"



**26 SLIDER - HEAD DETAIL**  
A9.1 1 1/2" = 1'-0"

**27 SLIDER - JAMB DETAIL**  
A9.1 1 1/2" = 1'-0"

**28 SLIDER - SILL DETAIL**  
A9.1 1 1/2" = 1'-0"



**22 THRESHOLD DETAIL**  
A9.1 1 1/2" = 1'-0"

**23 HEAD DETAIL**  
A9.1 1 1/2" = 1'-0"

**24 JAMB DETAIL**  
A9.1 1 1/2" = 1'-0"

**25 THRESHOLD DETAIL**  
A9.1 1 1/2" = 1'-0"

**MAROTTA/MAN ARCHITECTS**  
WWW.MAROTTAMAIN.COM

**School District of Lancaster**  
Together We Can!

**RENOVATIONS**  
**J.P. MCCASKEY STADIUM**  
**PROJECTS**  
**SCHOOL DISTRICT OF LANCASTER**  
445 N RESERVOIR ST, LANCASTER, PA 17602

**ISSUE DATES**  
DATE: 03/05/2025  
DESCRIPTION: CONFORMED SET

**PROJ #1: 24-80L-03**  
**DRAWN BY: DRW**

**DOOR & WINDOW SCHEDULES & TYPES**

**SHEET NUMBER:**  
**A9.1**

**CONFORMED SET**



<