

The contents of this Addendum alter and amend the drawings and specifications and take precedence over the related items therein. Bidders shall include the cost of all items in their Bids.

**GENERAL INFORMATION**

1. PLUMBING SCOPE REVISIONS: In lieu of water service replacement, existing water service to building (1" DW & 6" Sprinkler) shall remain. Water closet plumbing fixtures changed from flushometer to tank-style fixtures. DW supply pipe sizes have been updated.
  - a. For the purposes of expediency in accommodating this change, RFI's RELATED TO THIS CHANGE may be submitted via email to the Architect ([ScottG@MG-Architects.com](mailto:ScottG@MG-Architects.com)) or via Pennbid. They will be responded to expediently, and responses then aggregated in final Addendum.
2. Additional details for retaining wall construction added to A-506.

**CLARIFICATIONS:**

1. Missing partition type descriptions:
  - a. 2B – 2" CMU soap block.
  - b. 7/7A – 6" 20 ga. Studs @ 16" o.c. w/ 5/8" gyp either side. Acoustic insulation & sealant at type '7A.'
  - c. 7R – 6" 20 ga. Studs @ 16" o.c. w/ 5/8" gyp either side. Ballistic-resistant sheathing behind gypsum board on secure side of wall.
  - d. 6BGA – See Detail 8/A-501
2. Unit Price "UG-04: Floor Leveler": Unit price shall be based per square foot at 1/4-inch thickness.

**REQUESTS FOR INFORMATION:**

- #A5.1 With this last addendum, for the alternate [G-01] is your intent for us to remove all of the gutters so we can paint the fascia and gutters?
- A: *Gutters do not need to be removed in order to paint the fasciae. Downspouts should be removed and reinstalled in order to get 360 degree coverage and avoid paint splatter on the masonry.*
- #A5.2 For the doors that are to be refinished, are you looking to strip it? or just sand, wipe a little stain in and seal it.
- A: *Existing flush wood veneer doors to be sanded, patched and stained to match new doors. Level of sanding/stripping as required to get clean matching finish.*
- #A5.3 Do the shutters get painted?
- A: *Yes, they are considered part of the "trim" as are the window cornices.*
- #A5.4 [What is the intent for the wood trim in the lobby where the wall adjacent to the elevator is demo'd?]

*A: GC shall be responsible for cleanly demolishing the wall to permit a finished termination against the new wall between the Lobby and PD Reception area. Provide patching trim as required.*

**DRAWINGS:**

**A-001:** Drawing index updated.

**A-506:** Details 5, 6 & 7 added for retaining wall architectural info.

**P-1:** Plumbing General Notes and Demolition Notes revised.

**P-2:** Plumbing demolition scope revised at water service entrance.

**P-6:** Domestic water piping revised.

**P-7:** Domestic water piping revised.

**P-8:** Fixture schedule revised. Water service and flushometer wiring detail removed.

**SPECIFICATIONS**

1. **Section 224213.13 "Commercial Water Closets":** Revised fixture specs.

**REQUESTS FOR SUBSTITUTION:**

None.

**END.  
MG ARCHITECTS, LTD.**

SOG/lev  
Attachments:

- Specification section 224213.13 (Rev 1) " Commercial Water Closets."
- Updated Drawings:
  - A-001
  - A-506
  - P-1
  - P-2
  - P-6
  - P-7
  - P-8

## SECTION 224213.13

### COMMERCIAL WATER CLOSETS (REVISION 1 – 10-02-2024)

#### PART 1 - GENERAL

##### 1.1 RELATED DOCUMENTS

- A. Drawings and general provisions of the Contract, including General and supplementary Conditions and Division 01 Specification Sections, apply to this Section.

##### 1.2 SUMMARY

- A. Section Includes:
  - 1. Water closets.
  - 2. ~~Flushometer valves.~~
  - 3. Toilet seats.

##### 1.3 ACTION SUBMITTALS

- A. Product Data: For each type of product.

##### 1.4 CLOSEOUT SUBMITTALS

- A. Operation and Maintenance Data.

#### PART 2 - PRODUCTS

##### 2.1 FLOOR-MOUNTED WATER CLOSETS

- A. **Water Closets: Floor mounted, floor outlet, close coupled (gravity tank), vitreous china.**
  - 1. **Basis-of-Design Product:** Subject to compliance with requirements, provide American Standard model scheduled or comparable product by one of the following:
    - a. Kohler
    - b. Sloan
    - c. Toto
  - 2. **Bowl:**
    - a. **Standards:** ASME A112.19.2/CSA B45.1 and ASME A112.19.5, and ASSE 1037.
    - b. **Bowl Type:** Siphon jet.
    - c. **Height:** As scheduled

- d. Rim Contour: Elongated.
    - e. Water Consumption: As Scheduled
    - f. Color: White.
  - 3. Tank:
    - a. Refer to fixture schedule on drawings for hand lever locations.
  - 4. Supply Fittings:
    - a. ASME A112.18.1/CSA B125.1.
    - b. Supply Piping: Chrome-plated-brass pipe or chrome-plated-copper tube matching water-supply piping size. Include chrome-plated wall flange.
    - c. Stop: Chrome-plated-brass, one-quarter-turn, ball-type or compression stop with inlet connection matching water-supply piping type and size.
      - 1. Operation: Loose key.
    - d. Riser:
      - 1. Size: NPS 1/2.
      - 2. Material: Chrome-plated, soft-copper flexible tube or ASME A112.18.6, braided or corrugated stainless steel flexible hose riser.
- B. Water Closets: Floor mounted, floor outlet, cistern tank toilet, 16 gage stainless steel.**
- 1. **Basis-of-Design Product:** Subject to compliance with requirements, provide Whitehall model scheduled or comparable product by one of the following:
    - a. Acorn Engineering
    - b. Willoughby
  - 2. Bowl:
    - a. Standards: ASME A112.19.3
    - b. Bowl Type: Siphon jet.
    - c. Height: As scheduled
    - d. Rim Contour: Elongated.
    - e. Water Consumption: As Scheduled
    - f. Color: White.
  - 3. Tank:
    - a. Refer to fixture schedule on drawings for hand lever locations.
  - 4. Supply Fittings:
    - a. ASME A112.18.1/CSA B125.1.
    - b. Supply Piping: Chrome-plated-brass pipe or chrome-plated-copper tube matching water-supply piping size. Include chrome-plated wall flange.
    - c. Stop: Chrome-plated-brass, one-quarter-turn, ball-type or compression stop with inlet connection matching water-supply piping type and size.
      - 1. Operation: Loose key.
    - d. Riser:

1. **Size: NPS 1/2.**
  2. **Material: Chrome-plated, soft-copper flexible tube or ASME A112.18.6, braided or corrugated stainless steel flexible hose riser.**
- e. **Seat: Furnished with toilet**

~~2.2~~ ~~FLUSHOMETER VALVES~~

- A. ~~P-1 and P-2: Exposed Electronic, Battery Powered, Sensor Operated.~~
- B. ~~P-16: Concealed Electronic, Hard Wired, Sensor Operated.~~
- C. ~~Reference: Sloan Model G2. Or comparable product by one of the following~~
1. ~~American Standard~~
  2. ~~Kohler~~
  3. ~~Sloan~~
  4. ~~Toto~~

2.3 TOILET SEATS

- A. Toilet Seats:
1. Basis-of-Design Product: Subject to compliance with requirements, provide American Standard model scheduled or comparable product by one of the following:
    - a. Bemis Manufacturing Company.
    - b. Church Seats.
    - c. Olsonite Seat Co.
  2. Standard: IAPMO/ANSI Z124.5.
  3. Material: Plastic, anti-microbial protected.
  4. Type: Commercial (Standard).
  5. Shape: Elongated rim, open front.
  6. Hinge: Self-sustaining.
  7. Hinge Material: Noncorroding metal.
  8. Color: White.

PART 3 - EXECUTION

3.1 INSTALLATION

- A. Water-Closet Installation:
1. Install level and plumb according to roughing-in drawings.
  2. Install accessible water closets at mounting height for handicapped/elderly, according to ICC/ANSI A117.1.
- B. Support Installation:
1. Install supports, affixed to building substrate, for floor-mounted water closets.
  2. Use carrier supports with waste-fitting assembly and seal.

3. Install wall-mounted, back-outlet water-closet supports with waste-fitting assembly and waste-fitting seals; and affix to building substrate.

~~C. Flushometer Valve Installation:~~

- ~~1. Install flushometer valve, water supply fitting on each supply to each water closet.~~
- ~~2. Attach supply piping to supports or substrate within pipe spaces behind fixtures.~~
- ~~3. Install actuators in locations that are easy for people with disabilities to reach.~~

- D. Install toilet seats on water closets.

E. Joint Sealing:

1. Seal joints between water closets and walls and floors using sanitary-type, one-part, mildew-resistant silicone sealant. Match sealant color to water-closet color.

3.2 CONNECTIONS

- A. Connect water closets with water supplies and soil, waste, and vent piping. Use size fittings required to match water closets.
- B. Comply with water piping requirements specified in Section 221116 "Domestic Water Piping."
- C. Comply with soil and waste piping requirements specified in Section 221316 "Sanitary Waste and Vent Piping."
- D. Where installing piping adjacent to water closets, allow space for service and maintenance.

3.3 ADJUSTING

- A. Operate and adjust water closets and controls. Replace damaged and malfunctioning water closets, fittings, and controls.

~~B. Adjust water pressure at flushometer valves to produce proper flow.~~

3.4 CLEANING AND PROTECTION

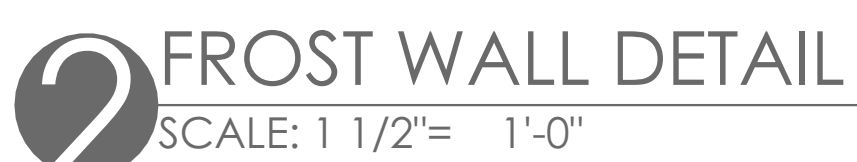
- A. Clean water closets and fittings with manufacturers' recommended cleaning methods and materials.
- B. Install protective covering for installed water closets and fittings.
- C. Do not allow use of water closets for temporary facilities unless approved in writing by Owner.

**END OF SECTION 22421**





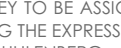




LOWER POTTS GROVE TWP  
contact: CHRISTOPHER CAGGIANO  
2199 BUCHERT ROAD  
POTTSTOWN, PA 19646  
610-310-1759  
ccaggiano1@gmail.com

LOWER POTTS GROVE TWP  
LOWER POTTS GROVE MUNICIPAL  
BUILDING & POLICE STATION  
1963 E HIGH ST. POTTS TOWN, PA 19464

[illegible]

PROJ. MGR.: GRACE CAI, AIA  
e-MAIL: GRACECAI@MG-ARCHITECTS.COM  
DRAWN BY: JNS, JMS  
CLIENT PROJ. #: \_\_\_\_\_  
  
BAR IS ONE (1) INCH LONG ON ORIGINAL DRAWING  
COPYRIGHT © 2004 ALL RIGHTS RESERVED. NEITHER ALL NOR ANY PART OF THIS DOCUMENT MAY BE REPRODUCED, EITHER WHOLLY OR USED IN ANY FORM OR MANNER EXCEPT PURSUANT TO THE AGREEMENT WITH THE SPECIFIC WRITTEN PERMISSION OF MG ARCHITECTS, LTD. THESE PLANS, DESIGNS AND SUBJECT MATTER ARE TO BE KEPT CONFIDENTIAL, CHANGED OR COPIED IN ANY MANNER WHATSOEVER WITHOUT FIRST OBTAINING THE EXPRESS WRITTEN PERMISSION AND CONSENT OF THE ARCHITECTS' FIRM, MG ARCHITECTS, LTD. THIS DOCUMENT IS AN ARTICLE OF SERVICE AND THE COPYRIGHT AND OTHER PROPRITY RIGHTS ARE RESERVED BY MG ARCHITECTS, LTD.

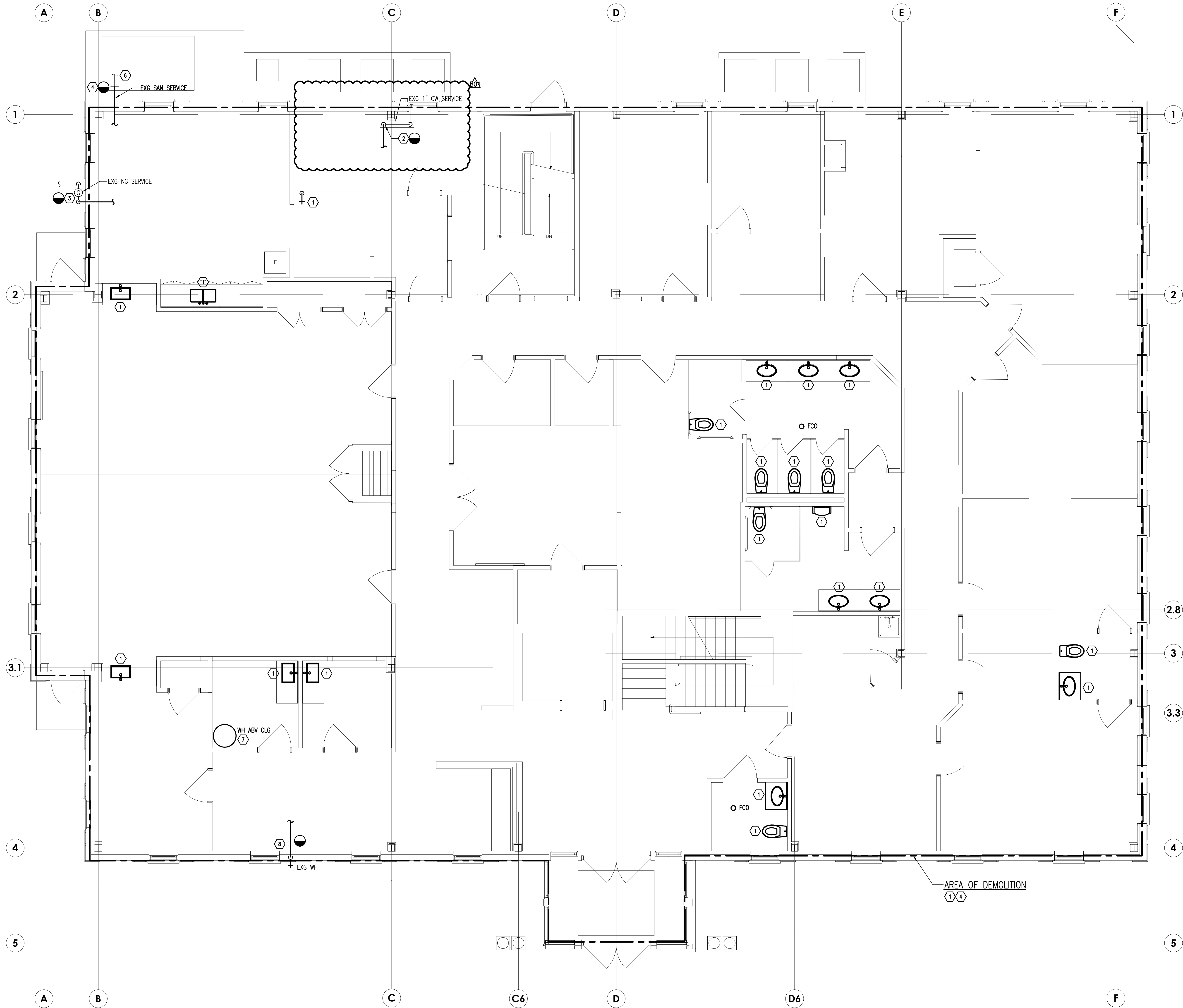
SHEET TITLE:

DETAILS

A-506







PLUMBING — FIRST FLOOR PLAN — DEMOLITION  
SCALE: 1/4" = 1'-0"

GENERAL NOTES  
REFER TO P-1 FOR LEGEND, GENERAL  
NOTES, DEMOLITION NOTES AND NEW  
WORK NOTES.

MG

ARCHITECTS

ARCHITECTURAL DESIGN  
INTERIOR DESIGN  
CODE ANALYSIS  
PLANNING SERVICES  
REPORTS AND STUDIES  
ENGINEERING SERVICES  
HISTORIC PRESERVATION

1208 PENN AVE  
WYOMISSING, PA 19610  
610.376.4927  
www.MG-Architects.com

PROJECT #:  
23-0047.0

MEI

MARTARANO  
ENGINEERING INC

1105 Berkshire Blvd. Suite 140  
Wyomissing, PA 19610  
t(494)-706-9779  
Project #23-150

PROJECT #: 23-150  
PROFESSIONAL SEAL

ANGELO L. MARTARANO  
MATTHEW PAGE

LOWER POTTS GROVE TWP  
contact: CHRISTOPHER CAGGIANO  
2199 BUCHERT ROAD  
POTTSTOWN, PA 19446  
610-310-1759  
ccaggiano1@gmail.com

LOWER POTTS GROVE TWP  
LOWER POTTS GROVE MUNICIPAL  
BLDG & POLICE STATION  
1963 E HIGH ST.  
POTTSTOWN, PA 19444

CONSTRUCTION DOCUMENTS REVISION HISTORY		
ID	DESCRIPTION	DATE
800	ISSUED FOR BID/PERMIT	09/06/2024
801	ADDENDUM & REVISIONS	10/02/2024

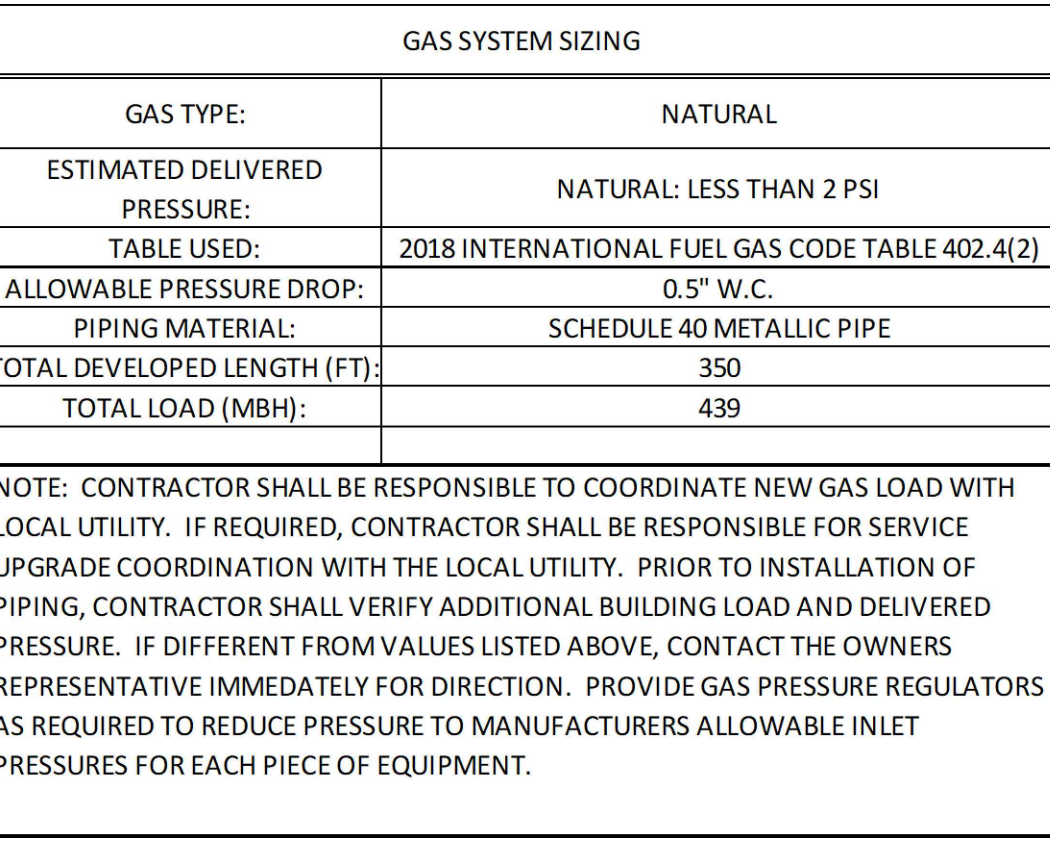
PROJ. MGR.: ANGELO MARTARANO, PE  
EMAIL: AMARTARANO@MARTARANOENGINEERING.COM  
DRAWN BY: AG, KR  
CLIENT PROJ #:-  
SHEET SCALE  
0 1  
BAR SCALE (11 INCH LONG ON ORIGINAL DRAWING)

COPYRIGHT © 2024 ALL RIGHTS RESERVED. NEITHER ALL NOR ANY  
PART OF THIS DOCUMENT MAY BE REPRODUCED, REPROCESSED,  
COPIED OR USED IN ANY FORM OR MANNER EXCEPT PURSUANT  
TO CONTRACT OR WITH THE SPECIFIC WRITTEN PERMISSION OF MG  
ARCHITECTS LTD. THESE PLANS, DESIGNS AND SUBJECT MATTER ARE  
NOT TO BE REPRODUCED, CHANGED OR COPIED IN ANY MANNER  
WHATSOEVER. NOR ARE THEY TO BE ASSIGNED TO ANY THIRD  
PARTY. WITHOUT THE WRITTEN PERMISSION OF MG ARCHITECTS, LTD. THIS  
DOCUMENT IS AN ARTICLE OF SERVICE AND THE COPYRIGHT AND  
OTHER PROPRIETARY RIGHTS ARE EXPRESSLY RESERVED BY MG  
ARCHITECTS, LTD.

SHEET TITLE:  
PLUMBING  
FIRST FLOOR  
DEMOLITION

P-2





**GENERAL NOTES**  
REFER TO P-1 FOR LEGEND, GENERAL  
NOTES, DEMOLITION NOTES AND NEW  
WORK NOTES.





PROJECT #:  
3-0047.0

**MEI**  
**MARTARANO**  
ENGINEERING INC.  
205 Berkshire Blvd. Suite 140  
Wyomissing, PA 19610  
t:(484)-706-9779  
Project #23-150

GELO L. MARTARANO  
MATTHEW PAGE

contact: CHRISTOPHER CAGGIANO  
2199 BUCHERT ROAD  
POTTSTOWN, PA 19646  
610-310-1759  
ccaggiano1@gmail.com

LOWER POTTS GROVE TWP  
LOWER POTTS GROVE MUNICIPAL  
BLDG & POLICE STATION  
1963 E HIGH ST.  
POTTSTOWN, PA 19464

[illegible]

CLIENT PROJ #: -

VERIFY SCALE

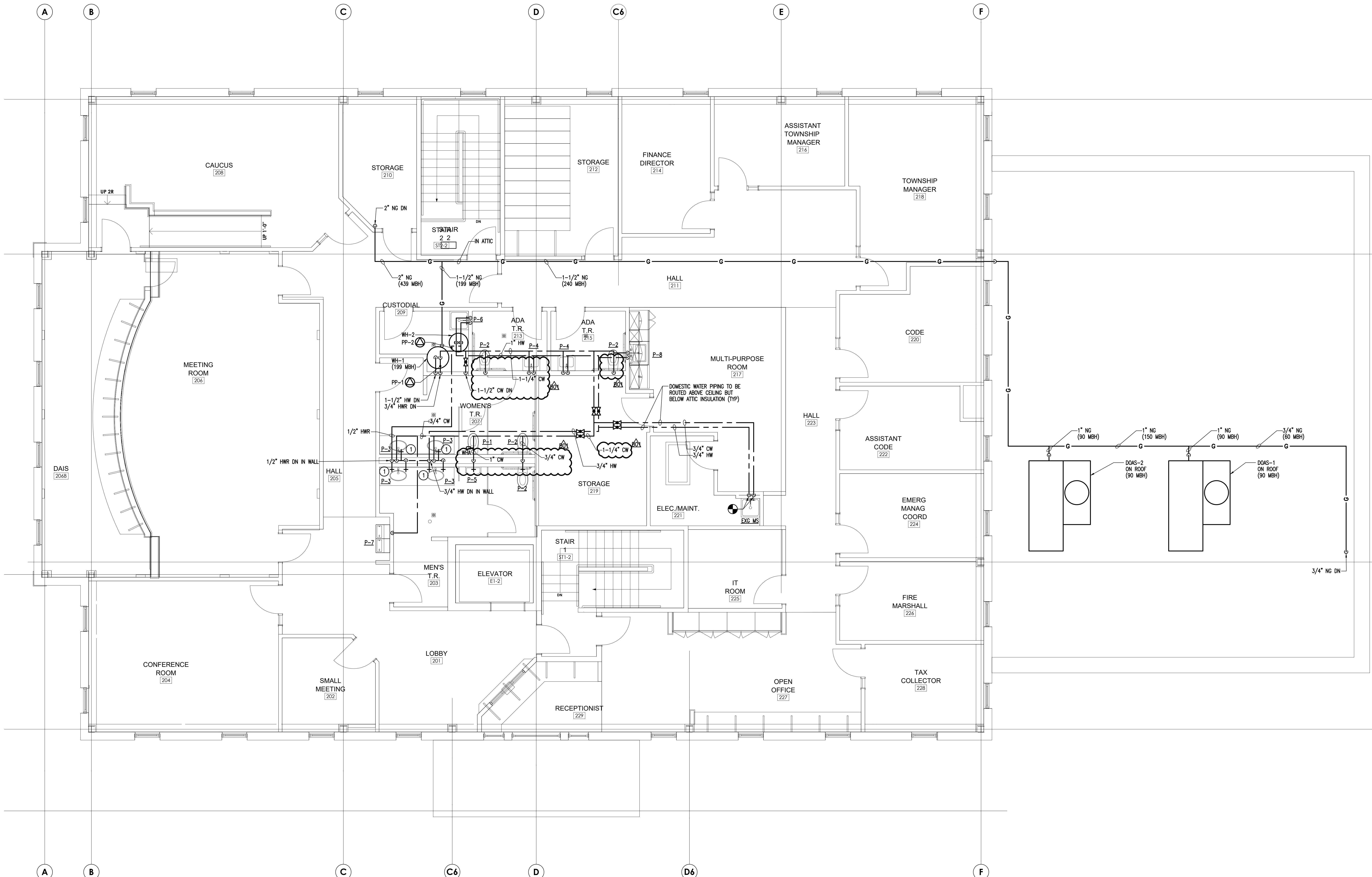
0 1

BAR IS ONE (1) INCH LONG ON ORIGINAL DRAWING

PLYTHO © 2024 ALL RIGHTS RESERVED. NEITHER ALL NOR ANY OF  
 THIS DOCUMENT ARE TO BE REPRODUCED, REPRODUCED, COPIED,  
 OR USED IN ANY FORM OR MANNER, OR BY ANY MEANS, WITHOUT  
 CONTRACT OR WITH THE SPECIFIC WRITTEN PERMISSION OF MG  
 ARCHITECTS, LTD. THESE PLANS, DESIGNS AND SUBJECT MATTER ARE  
 TO BE REPRODUCED, CHANGED OR COPIED IN ANY MANNER  
 WHATSOEVER, WITHOUT FIRST OBTAINING THE EXPRESS WRITTEN  
 PERMISSION AND CONSENT OF MG ARCHITECTS, LTD. THIS  
 DOCUMENT IS AN ARTICLE OF SERVICE AND THE COPYRIGHT AND  
 OTHER PROPERTY RIGHTS ARE EXPRESSLY RESERVED BY MG  
 ARCHITECTS, LTD.

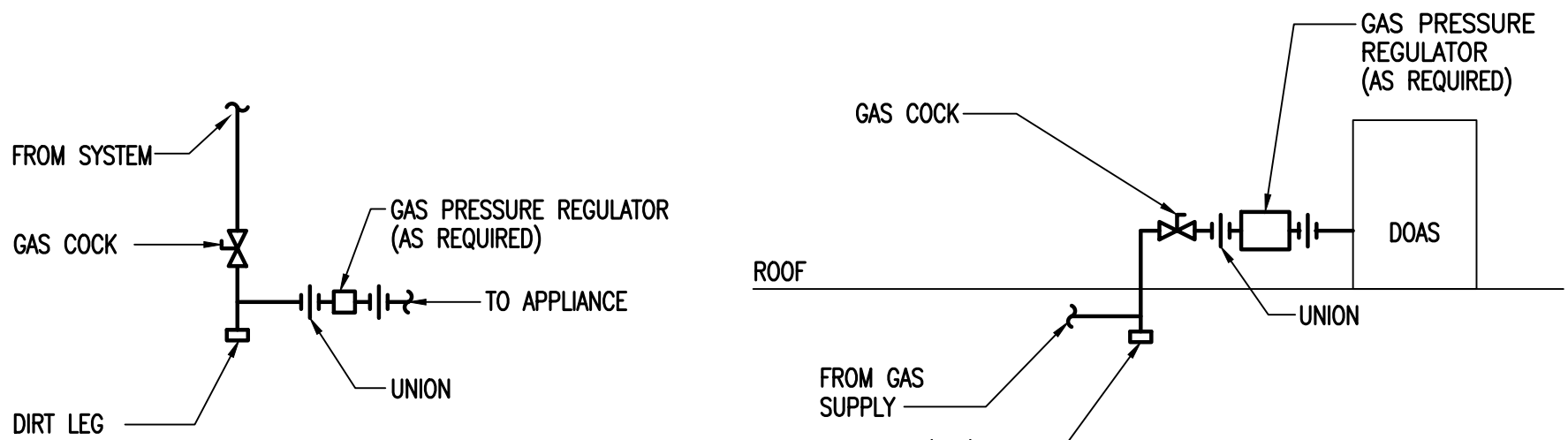
PLUMBING  
SECOND FLOOR  
WATER & GAS

P-7



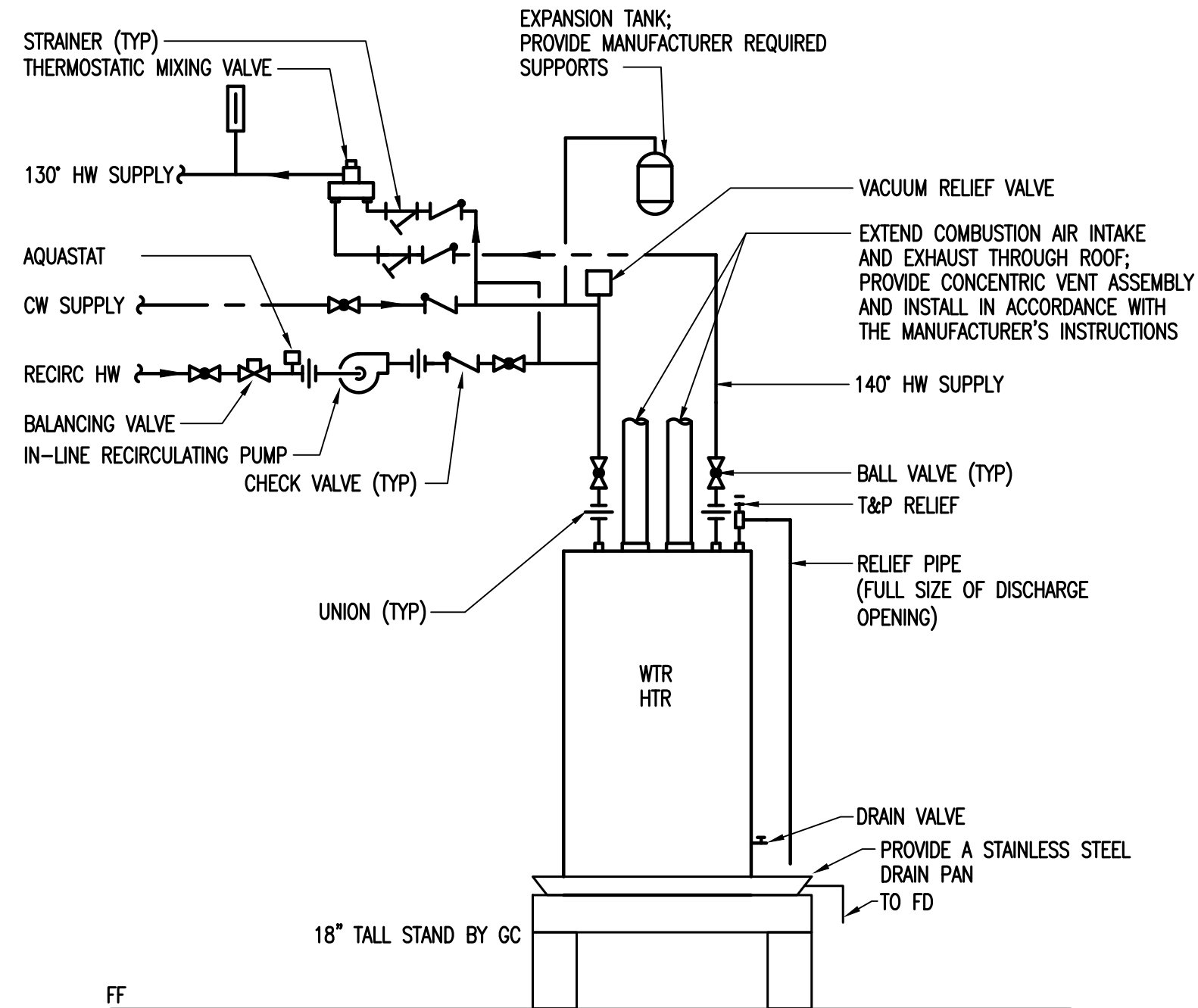
PLUMBING - SECOND FLOOR PLAN - NEW WORK - DOMESTIC WATER & GAS  
SCALE: 1/4" = 1'-0"



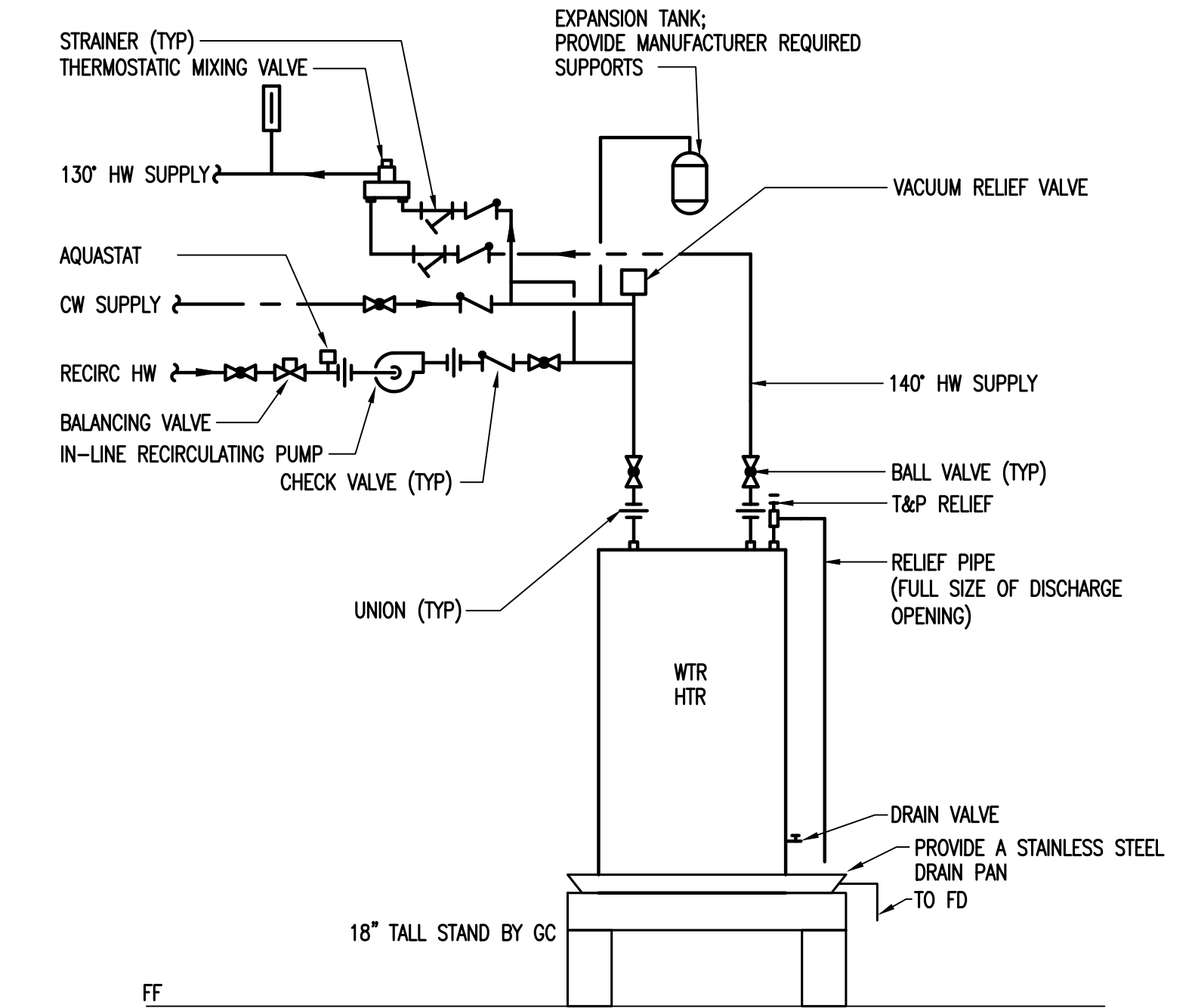


**GAS PIPING DIAGRAM**  
NO SCALE

**GAS PIPING DIAGRAM**  
NO SCALE



**WATER HEATER PIPING DIAGRAM (WH-1)**  
NO SCALE



**WATER HEATER PIPING DIAGRAM (WH-2)**  
NO SCALE

PLUMBING FIXTURE SCHEDULE											
TAG	FIXTURE	MANUFACTURER	MODEL NO.	GPF/GPM	CW (IN)	HW (IN)	SAN (IN)	VENT (IN)	FINISH	COMMENTS	
P-1	WATER CLOSET	AMERICAN STANDARD CHAMPION	211CA.004	1.6 GPF	0.5	-	4	2	WHITE	FLOOR MOUNTED, GRAVITY FLUSH TANK TYPE, MANUAL FLUSH; WITH EVERCLEAN SURFACE	
	TOILET SEAT	AMERICAN STANDARD	5901.100SS	-	-	-	-	-	WHITE	ELONGATED, OPEN FRONT WITH SELF SUSTAINING HINGE; WITH EVERCLEAN SURFACE	
P-2	WATER CLOSET	AMERICAN STANDARD	211AA.004/5	1.6 GPF	0.5	-	4	2	WHITE	FLOOR MOUNTED, GRAVITY FLUSH TANK TYPE, MANUAL FLUSH, ADA COMPLIANT, SEE NOTE 1,2; WITH EVERCLEAN SURFACE	
	TOILET SEAT	AMERICAN STANDARD	5901.100SS	-	-	-	-	-	WHITE	ELONGATED, OPEN FRONT WITH SELF SUSTAINING HINGE; WITH EVERCLEAN SURFACE	
P-3	LAVATORY	AMERICAN STANDARD OVALYN	0495.221	-	-	-	1.5	1.5	WHITE	UNDERMOUNT; GLAZED UNDERSIDE; OVAL 17-1/8 X 14-1/8"; VITREOUS CHINA; SEE NOTE 2,3	
	LAV FAUCET	SLOAN	EBF-650	0.5 GPM	0.5	0.5	-	-	POLISHED CHROME	CENTER SET SENSOR OPERATED FAUCET; BATTERY POWERED PROVIDE WITH CHROME PLATED BRASS GRID DRAIN UNDER LAVATORY; ASSE 1070 LISTED VALVE SET TO 110 DEGREES	
P-4	LAVATORY	AMERICAN STANDARD LUCERNE	0355.012	-	-	-	1.5	1.5	WHITE	WALL MOUNTED; 20-1/2" X 18-1/4"; PROVIDE WITH FLOOR ANCHORED CONCEALED ARMS SUPPORT; SEE NOTE 2,3	
	LAV FAUCET	SLOAN	EBF-650	0.5 GPM	0.5	0.5	-	-	POLISHED CHROME	CENTER SET SENSOR OPERATED FAUCET; BATTERY POWERED PROVIDE WITH CHROME PLATED BRASS GRID DRAIN UNDER LAVATORY; ASSE 1070 LISTED VALVE SET TO 110 DEGREES	
P-5	URINAL	AMERICAN STANDARD WASHBROOK	6590.001	-	-	-	3	2	WHITE	WALL MOUNTED; PROVIDE WITH FLOOR MOUNTED SUPPORT; SEE NOTE 2	
	FLUSH VALVE	SLOAN G2	8186	0.5 GPF	1	-	-	-	POLISHED CHROME	BATTERY POWERED SENSOR OPERATED FLUSH VALVE	
P-6	MOP SERVICE BASIN	FIAT	MSB 2424	-	-	-	3	2	WHITE	24" X 24" X 10" MOP SERVICE BASIN WITH INTEGRAL STAINLESS DRAIN; PROVIDE WITH HOSE AND HOSE BRACKET (832-AA), MOP HANGER (889-CC), AND STAINLESS WALL GUARDS (MSG2424)	
	FAUCET	FIAT	830AA	-	0.75	0.75	-	-	POLISHED CHROME	WALL MOUNT WITH INTEGRAL VACUUM BREAKER, WALL BRACE, PAIL HOOK AND 3/4" THREADED HOSE CONNECTION	
P-7	ELECTRIC WATER COOLER	ELKAY	LZ5TL8W5LK	8 GPH	0.5	-	1.5	1.5	LIGHT GRAY	WALL HUNG; BI-LEVEL ELECTRIC WATER COOLER W/ BOTTLE FILLING STATION	
P-8	SINK	ELKAY	ELUHAD21155SPD	-	-	-	1.5	1.5	STAINLESS STEEL	UNDERMOUNT; 23-1/2" X 18-1/4" X 5-3/8" 304 STAINLESS STEEL; WITH PERFECT DRAIN SEE NOTE 2,3,4	
	FAUCET	ELKAY	LK406GN08T6	1.5 GPM	.5	.5	-	-	POLISHED CHROME	DECK MOUNT; GOOSENECK; WRISTBLADE HANDLES W/ 1.5 GPM AERATOR	
P-9	MIXING VALVE	POWERS	LFe480	-	-	-	-	-	-	UNDER CABINET; ASSE 1070 LISTED VALVE SET TO 110 DEGREES	
	FLOOR DRAIN	JAY R SMITH	2005	-	-	-	2	1.5	-	5" SQUARE NICKEL BRONZE STRAINER W/ RECTORSEAL ASSE 1072 MECHANICAL TRAP SEAL	
P-10	ADA SHOWER	CLARION BATHWARE	MF3837*BF34CD	-	-	-	2	1.5	WHITE	ACRYLIX SURFACE WITH FIBERGLASS REINFORCEMENT; ADA ACCESSIBLE W/ GRAB BARS, FOLDING SEAT, BRASS DRAIN AND CURTAIN ROD. SEE NOTE 2,5	
	SHOWER DRAIN	WATTS	FD7-R	-	-	-	2	1.5	STAINLESS STEEL	SHOWER DRAIN WITH ROUND STRAINER; SHALL BE COMPATIBLE WITH FIBERGLASS SHOWER PAN	
P-11	CONTROL	POWERS HYDROGUARD	e710	1.5 GPM	0.5	0.5	-	-	POLISHED CHROME	SHOWER ONLY TEMPERATURE/PRESSURE COMPENSATING W/ LOW FLOW FIXED (HANDHELD) SHOWERHEAD SYSTEM; ASSE 1016 LISTED	
	ADA SHOWER	CLARION BATHWARE	MP6338BF34	-	-	-	2	1.5	WHITE	ACRYLIX SURFACE WITH FIBERGLASS REINFORCEMENT; ADA ACCESSIBLE W/ GRAB BARS, BRASS DRAIN AND CURTAIN ROD. SEE NOTE 2,5	
	SHOWER DRAIN	WATTS	FD7-R	-	-	-	2	1.5	STAINLESS STEEL	SHOWER DRAIN WITH ROUND STRAINER; SHALL BE COMPATIBLE WITH FIBERGLASS SHOWER PAN	
	CONTROL	POWERS HYDROGUARD	e705	1.5 GPM	0.5	0.5	-	-	POLISHED CHROME	SHOWER ONLY TEMPERATURE/PRESSURE COMPENSATING W/ LOW FLOW FIXED (HANDHELD) SHOWERHEAD SYSTEM; ASSE 1016 LISTED	
P-12	TRENCH DRAIN	JR SMITH ENVIROFLO II	9931 AND 9936 CATCH BASIN	-	-	-	2	1.5	-	PROVIDE CATCH BASIN WITH SEDIMENT BUCKET; MODEL 9870-465-SSP STAINLESS STEEL COVER; ONE CLEANOUT SHOVEL	
P-13	WALL HYDRANT	JAY R SMITH	5509QT	-	0.75	-	-	-	-	1/4 TURN FREEZE RESISTANT WALL HYDRANT WITH INTEGRAL VACUUM BREAKER; 3/4" HOSE CONNECTION	
P-13	HOSE BIBB	JAY R SMITH	5670-H	-	0.75	-	-	-	-	BENT NOSE HOSE BIBB VALVE WITH VACUUM BREAKER; 3/4" HOSE CONNECTION	
P-14	EMERGENCY SHOWER	BRADLEY	S19-120	22 GPM	0.75	0.75	-	-	-	DRENCH SHOWER WITH HORIZONTAL SUPPLY, PULL HANDLE, PROVIDE WITH BRADLEY THERMOSTATIC MIXING VALVE - S19-2150	
P-15	TRENCH DRAIN	JR SMITH ENVIROFLO II	9931 AND 9936 CATCH BASIN	-	-	-	4	2	-	PROVIDE CATCH BASIN WITH SEDIMENT BUCKET; MODEL 9870-465-SSP STAINLESS STEEL COVER; ONE CLEANOUT SHOVEL	
P-16	WATER CLOSET	WHITEHALL	WH2145_10	-	0.5	-	4	2	WHITE	FLOOR MOUNTED LIGATURE RESISTANT	
	-	-	-	-	-	-	-	-	-	-	
	TOILET SEAT	WHITEHALL	WH-LRSC-WHITE	-	-	-	-	-	WHITE	LIGATURE RESISTANT SEAT COVER	

- NOTE
- COORDINATE FLUSHING HANDLE TO BE INSTALLED ON WIDE SIDE OF STALL/ROOM
  - COORDINATE ADA REQUIREMENTS WITH ARCHITECTURAL PLANS; IF REQUIRED, INSTALL FIXTURE IN ACCORDANCE WITH ALL ADA REQUIREMENTS.
  - WHEN REQUIRED TO BE ADA COVER ANY EXPOSED PIPING WITH ADA COMPLIANT FIXTURE WRAPS, COVERS, INSULATION, AND ALL OTHER ITEMS REQUIRED BY CODE.
  - IF THERE IS A RESIDENTIAL DISHWASHER ADJACENT TO SINK, PROVIDE TAILPIECE WITH DISHWASHER CONNECTION; COORDINATE WITH ARCHITECTURAL PLANS
  - COORDINATE HANDING OF SHOWER/TUB DRAIN AND ACCESSORIES WITH ARCHITECTURAL PLANS.

PUMP SCHEDULE										
REF NO	MANUFACTURER/ MODEL NO	SYSTEM SERVED	FLOW (GPM)	TDH FEET	MOTOR		ELECTRICAL CHARACTERISTICS			REMARKS
					(WATT)	(RPM)	VOLTS	PHASE	HERTZ	
PP-1	BELL AND GOSSETT / NBF-18	WH-1	2	12	90	3000	115	1	60	SEE NOTES
PP-2	BELL AND GOSSETT / NBF-18	WH-2	2	12	90	3000	115	1	60	SEE NOTES

NOTES: PROVIDE AQUASTAT AND SEVEN DAY TIME CLOCK.

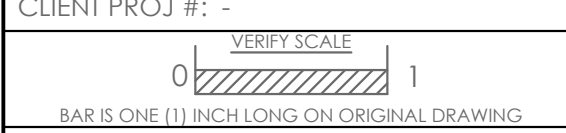
ELECTRIC WATER HEATER SCHEDULE										
REF NO	MANUFACTURER	MODEL NO.	TANK CAPACITY GALLON	KW	TEMP RISE	GALLONS PER HR RECOVERY	ELECTRICAL			REMARKS
							VOLTS	PHASE	HERTZ	
WH-2	BRADFORD WHITE	LE240LNS	31	4.5	90	21	208	1	60	NOTE 1

NOTES:

1. FACTORY INSTALLED TEMPERATURE AND PRESSURE RELIEF VALVE.

GAS WATER HEATER SCHEDULE										
REF NO	MANUFACTURER	MODEL NO	TANK CAPACITY GALLON	GAS MBH INPUT	TEMP RISE °F	GALLON PER HOUR RECOVERY	ELECTRICAL			REMARKS
							VOLTS	PHASE	HERTZ	
WH-1	BRADFORD WHITE	EF-100T-199E-5N	100	199	100	235	120	1	60	-

ID	DESCRIPTION	DATE
000	ISSUED FOR BID/PERMIT	09/06/2024
001	ADDENDUM A REVISIONS	10/02/2024



COPYRIGHT © 2024 ALL RIGHTS RESERVED. NEITHER ALL NOR ANY PART OF THIS DOCUMENT MAY BE REPRODUCED, REPRODUCED, COPIED OR USED IN ANY FORM OR MANNER EXCEPT PURSUANT TO CONTRACT OR WITH THE SPECIFIC WRITTEN PERMISSION OF MG ARCHITECTS LTD. THESE PLANS, DESIGN AND SUBJECT MATTER ARE NOT TO BE REPRODUCED, CHANGED OR COPIED IN ANY MANNER WHATSOEVER. NOR ARE THEY TO BE ASSIGNED TO ANY THIRD PARTY WITHOUT THE WRITTEN PERMISSION OF MG ARCHITECTS, LTD. THIS DOCUMENT IS AN ARTICLE OF SERVICE AND THE COPYRIGHT AND OTHER PROPRIETARY RIGHTS ARE EXPRESSLY RESERVED BY MG ARCHITECTS, LTD.