

19 Tilden Court, Livingston

**** Builders New Construction 10 Year Warranty ****

- 6 Bedrooms
- 6 Full Baths / 1 Half Bath
- 1st Floor Guest Suite
- Finished Basement
- Covered Deck
- 2 Car Attached Garage

1st & 2nd Fl – Approx. 3,200 sq ft
Basement – Approx. 1,525 sq ft
Total Finished Space – Approx. 4,725sq ft
Lot Size 100 x 158 / .36 acres

Karen Treacy, Rand Realty
Cell (973-464-8092
Email: kctreacy@verizon.net
Website: karentreacy.com – to see builder's work.
Builder is Blue Print Construction.

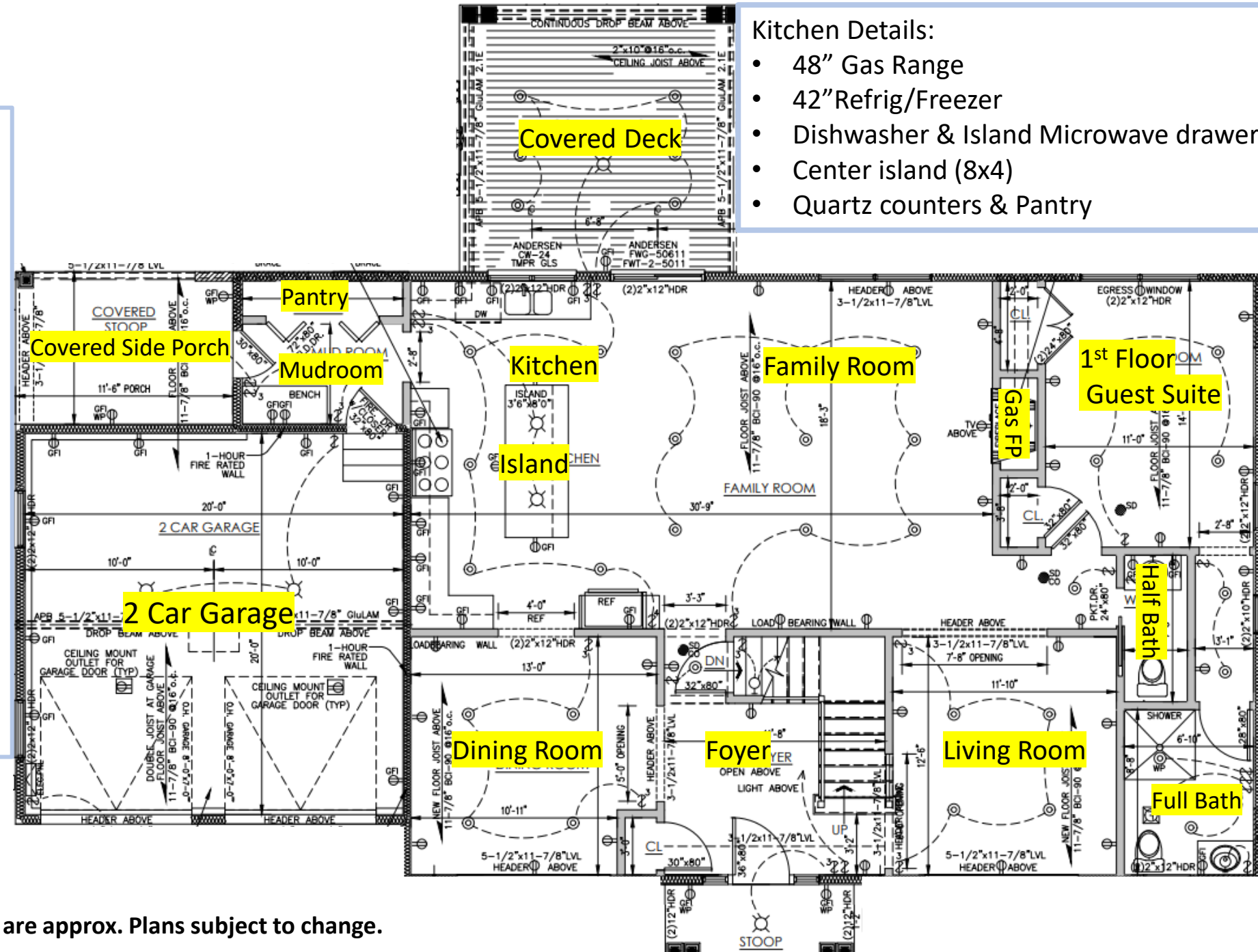


Note: Room dimensions and sq footage are approx. Plans subject to change

Rev. 2-9-25

19 Tilden Court – 1st Floor

- 20 ft Foyer Ceiling Height
- 10 ft Ceiling Height
- Herringbone HW design in foyer
- Red Oak HW flooring throughout
- Living Room (13 x 12)
- Dining Room (13 x 13)
- Family Room w/Gas FP (18 x 15)
- Sliders leading to Covered Deck.
- Kitchen (18 x 16)
- 1st Floor Guest En Suite (14 x 11)
- Full Bath (tile flooring)
- Mudroom w/Bench
- Covered side porch
- Wainscotting & Coffered Ceilings in Living & Dining Room
- Wainscotting in Foyer & Family Rm
- Separate zone heating & cooling
- Access to 2 car garage



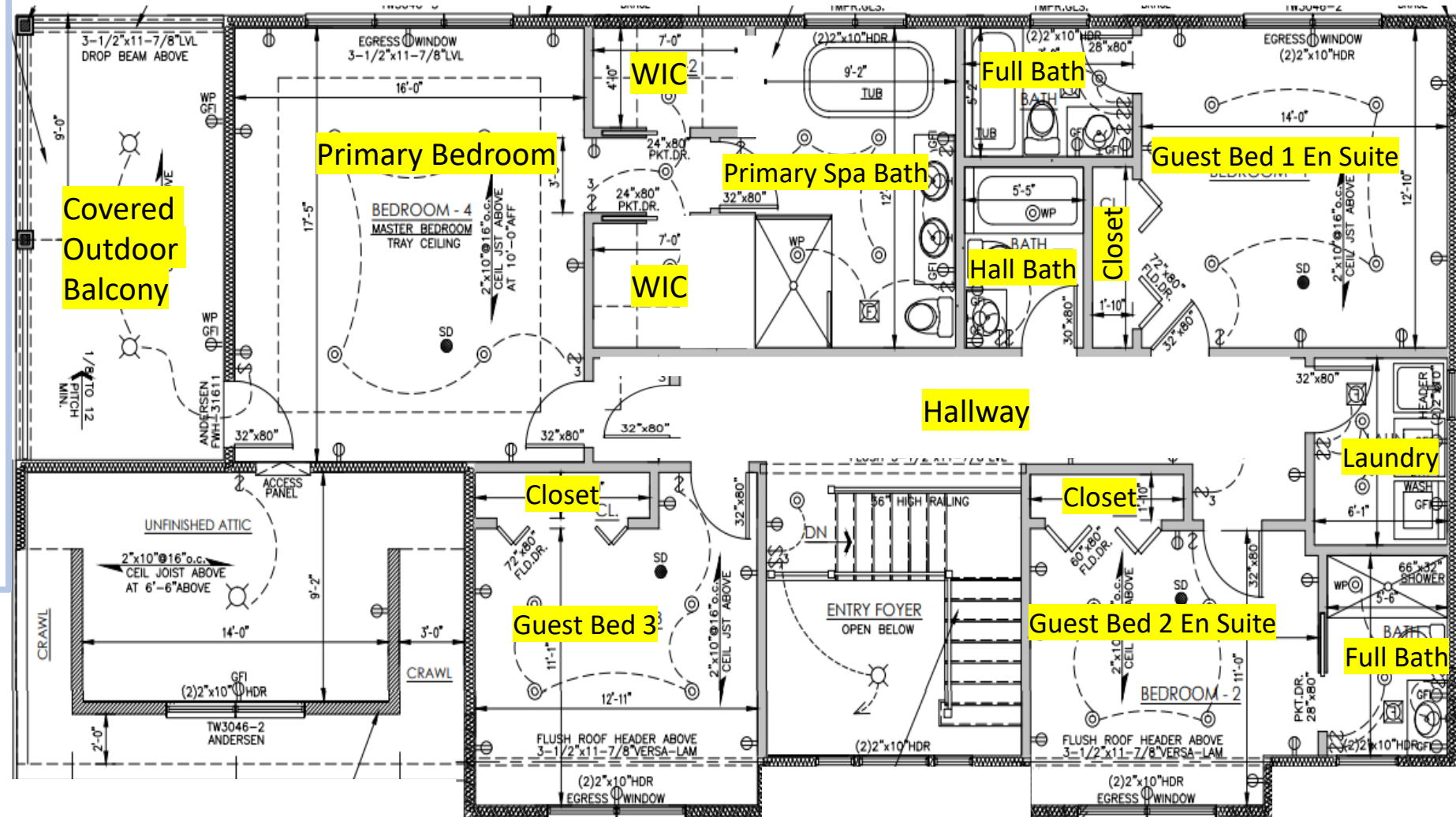
Kitchen Details:

- 48" Gas Range
- 42" Refrig/Freezer
- Dishwasher & Island Microwave drawer
- Center island (8x4)
- Quartz counters & Pantry

Note: Room dimensions and sq footage are approx. Plans subject to change.

19 Tilden Court – 2nd Floor

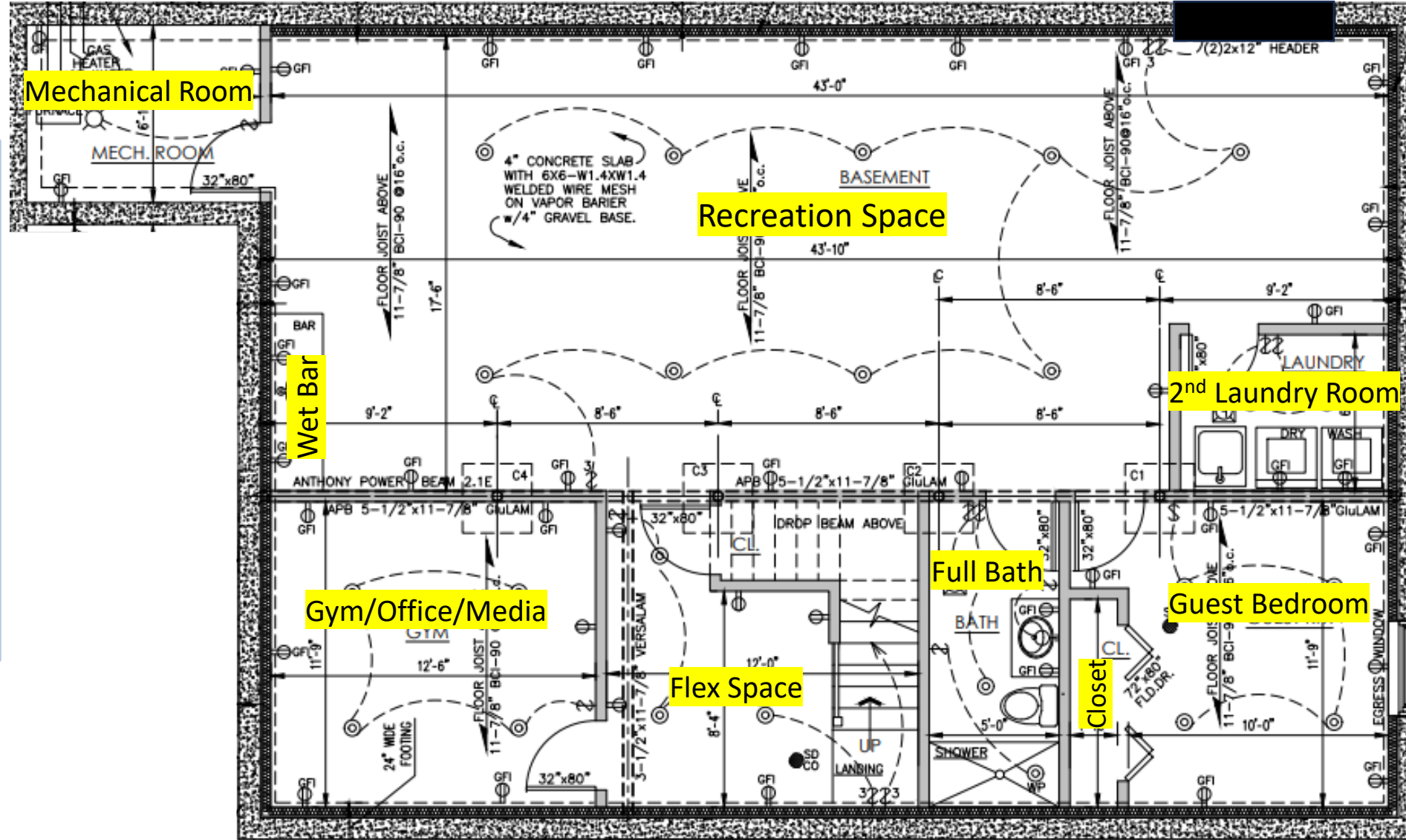
- 9ft Ceilings
- Primary Bedroom (16 x 18)
- 2 Primary WIC 's
- Primary Spa Bath
- Covered Balcony off Primary
- Guest Bed #1 En Suite (13 x 13)
- Guest Bed #2 En Suite (11 x 13)
- Guest Bed #3 (11 x 13)
- Hall Bath
- Laundry Room
- Access to Pull Down Attic Stairs
- Crown & Baseboard Molding
- Wainscoting in Hallway
- Red Oak HW Flooring throughout
- Separate zone heating & cooling



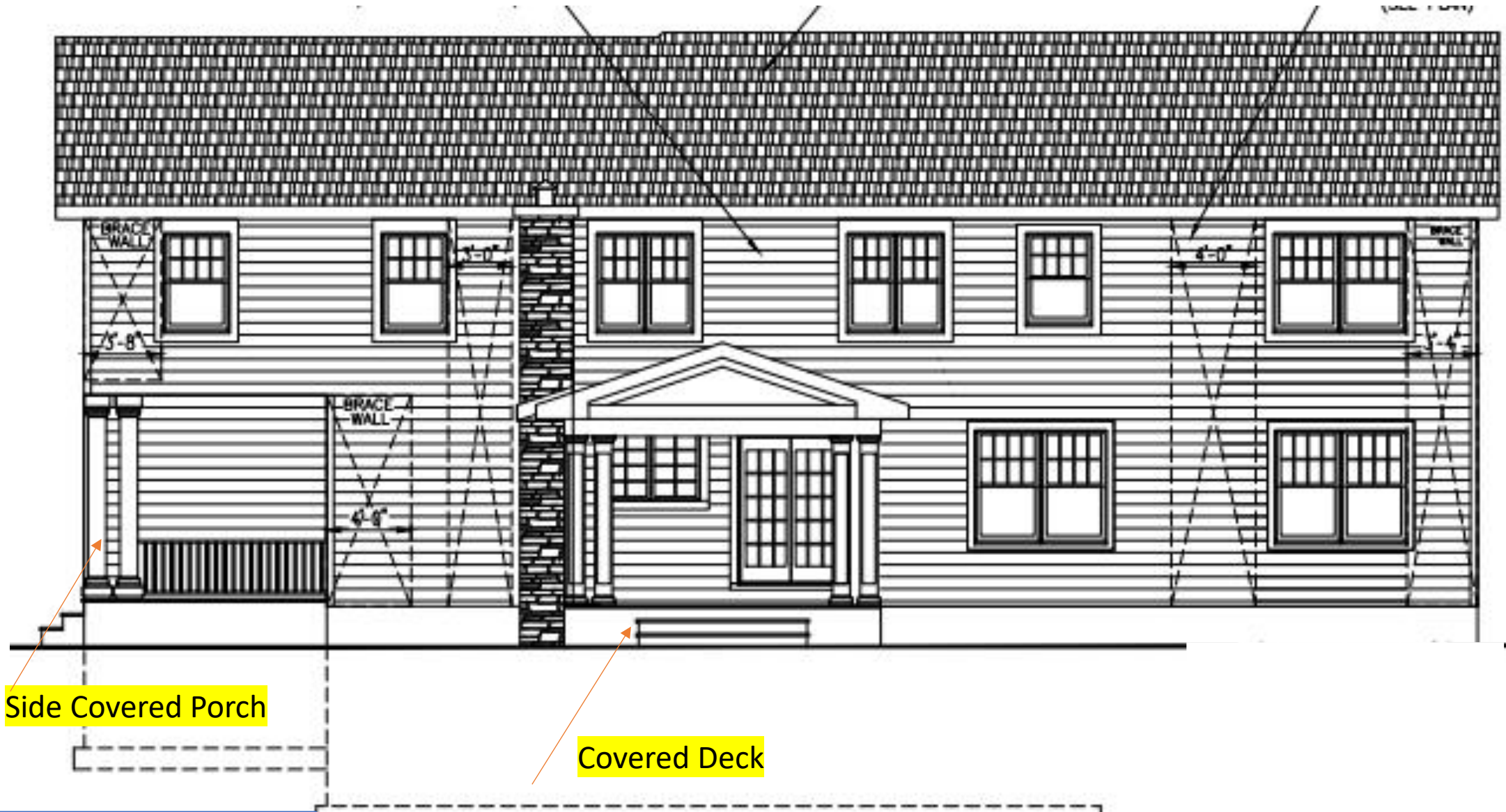
Note: Room dimensions and sq footage are approx. Plans subject to change.

19 Tilden Court - Finished Basement

- 9ft Ceiling Height
- Guest Bedroom (12 x 10)
- Gym/Office/Media (12 x 13)
- 2nd Laundry Room
- Rec Room (18 x 44)
- Flex Space (8 x 12)
- Wet Bar with wine/bev frig
- Separate zone heating & cooling
- Baseboard molding
- LVP Flooring (luxury vinyl plank)



Note: Room dimensions and sq footage are approx. Plans subject to change.



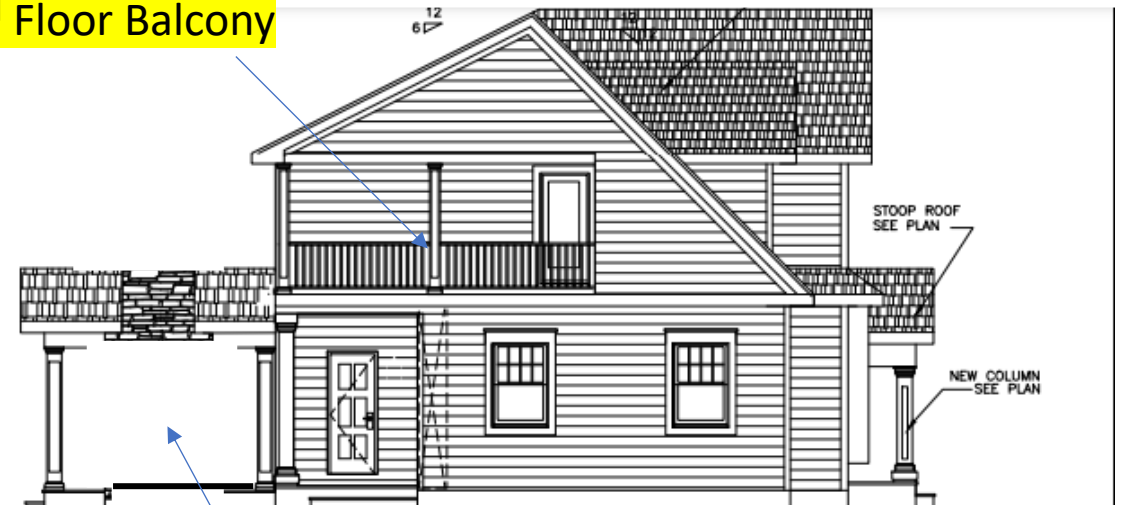
REAR VIEW

SIDE VIEWS



Covered Back Deck

2nd Floor Balcony



Covered Back Deck