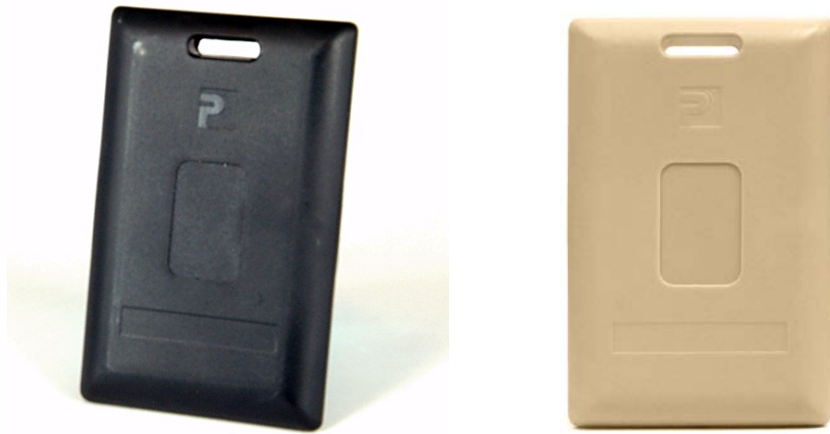




T-9800 / T-9800-DT

Personnel Badge Tags

Long Range Hands-Free Personnel Badge Tag



T-9800 Badge Tags

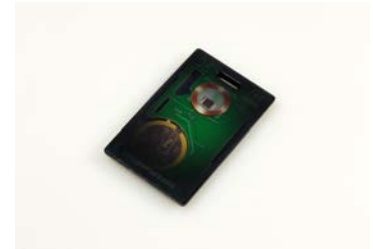
1st Choice T-9800 Personnel Badge Tags identify and track employees and visitors in office buildings, hospitals, mines, warehouses, schools, military bases, etc. for access control, visitor and employee tracking, and emergency evacuation and mustering. Personnel Badge Tags can be functionally linked to each other or asset/vehicle tags to be able to match employees to laptops, drivers to vehicles, visitors to employees, and patients to nurses, etc.

The T-9800 Tags have a standard credit card ID footprint for attaching photo identification cards and/or proximity access control cards. Tags can be attached using Standard ID card clips or lanyards.

Features:

- * Dynamic Tag Tracking
- * Up to 5 year battery life warranty
- * Unique Tag "sleep" feature
- * High impact UV stabilized PVC case ultrasonically sealed
- * Adjustable Read Range: 1'- 3,000' with various Reader Antennas
- * Tag transmissions include Real-Time battery life indicators
- * Access Control System Compatible
- * Available with built-in Proximity or Passive UHF chips
- * Optional Tamper, Motion, and Duress Sensing Capability
- * Secure Encrypted Transmission between Tags and Readers

1st Choice T-9800-DT Tags are available with built-in HID Prox, iClass, MIFARE, DESFire and most passive RFID credential chips by other manufacturers. This allows the T-9800-DT Tag to be a personal photo ID access control card, an employee / visitor tracking card, an emergency evacuation / muster identifier, and a smart card all in one credit card size credential.



T-9800-DT - X-Ray View

Also available is the T-9050 Duress Badge Tag which includes a built-in membrane push button for manual safety applications such as nurse duress, emergency help, manufacturing machine stop, and various Lone Worker Protection applications.



T-9050 Duress Tag on a Lanyard

APPLICATIONS

- * Transportation
- * Mining
- * Emergency Evacuation
- * Supply Chain
- * Petrochemical
- * Healthcare
- * Manufacturing
- * Gated Communities
- * Education

Tag Specifications

TX Frequency.....433.92 Mhz
 ERP.....< 300 Micro Watts
 Transmission Range.....2" - 600'+
 Variable Beacon Rate.....0.3 sec to 180 sec
 Operational Temperature -40° to +140° F
 Size.....86mm x 54mm x 4mm
 Weight.....0.5 oz
 Material.....UV Stabilized PVC (IP65)
 Battery.....Internal Lithium
 *This equipment has been tested and found to comply with the limits for a Class A digital device, pursuant to Part 15 of the FCC Rules.

For More Information Contact:



1st Choice Security Solutions, Inc.

1000 Cooper Circle
 Suite 210
 Peachtree City, GA 30269

Sales@1stChoiceSecuritySolutions.com
 www.1stChoiceSecuritySolutions.com
 P) 770-487-7727 F) 770-487-7765