



AIRCAT[®]

PNEUMATIC TOOLS[®]

PRODUCT CATALOGUE 2023

WHEN YOU'VE GOT REAL WORK TO DO...
GRAB HOLD OF AN **AIRCAT!**

AIRCAT[®]
PNEUMATIC TOOLS[®]

NITROCAT[®]
Xtreme
POWER
CAUTION

VIBROTHERM
by AIRCAT. **DRIVE[®]**

WWW.AIRCAT-TOOLS.COM

The AIRCAT® line represents the most significant advances in the performance of pneumatic power tools in nearly 30 years. In fact, AIRCAT® has a substantially reduced level of noise whilst retaining more power and torque. But that's not all, the patented ergonomically engineered handles are designed to relieve stress and fatigue on the operator's hands, wrists and arms.

**AIRCAT® pneumatic tools ...
"More power, Half the noise"**

VIBROTHERM DRIVE® impact wrenches combine our patented adjustable drive coupling with state-of-the-art cosmetic styling. These revolutionary impact wrenches offer longer working life, lower vibration levels and shorter body length for improved comfort, as well as greater flexibility in your day to day operations.

Our new AIRCAT® impact wrenches deliver up to an unmatched 2,100 ft-lb of torque with weights between 5.87 Kg to 11.78 Kg. The new sander line delivers low noise and vibration levels, low air consumption and unmatched operating comfort

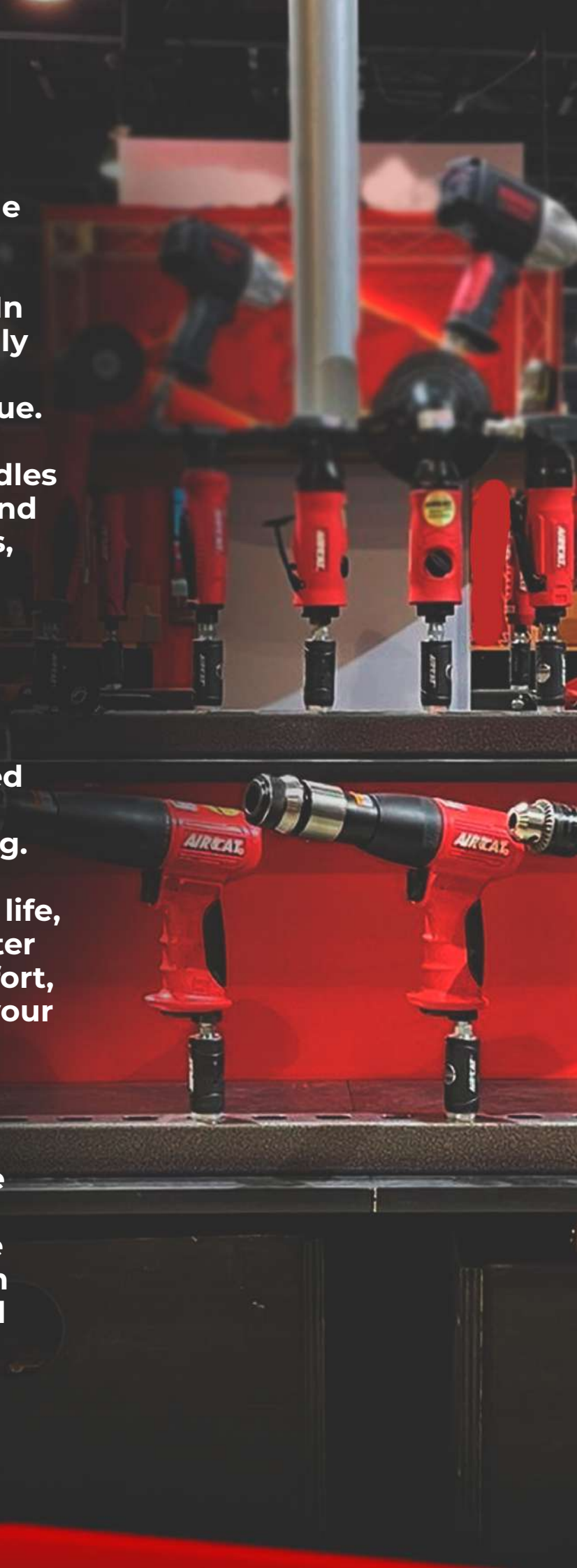


TABLE OF CONTENTS

MODEL NO.	DESCRIPTION	PAGE NO.
IMPACT WRENCHES		
AC1056-XL	AIRCAT 1/2" Composite Impact Wrench	9
AC1057-TH	AIRCAT 1/2" Composite Impact Wrench	9
AC1058-VXL	AIRCAT 1/2" Compact Impact Wrench	9
AC1059-VXL	AIRCAT 3/8" Compact Impact Wrench	9
AC1125	AIRCAT 1/2" Impact Wrench NEW	12
AC1150	AIRCAT 1/2" Impact Wrench	11
AC1178-VXL	AIRCAT 1/2" Composite Impact Wrench	11
AC1280-IND	AIRCAT 1/2" Impact Wrench	10
AC1431	AIRCAT 1/2" Impact Wrench	10
AC1450	AIRCAT 1/2" Impact Wrench	10
AC1450-2	AIRCAT 2" Extended anvil	10
AC1600-TH-A	AIRCAT 3/4" Super Duty" Impact Wrench	13
AC1600-TH-A1	AIRCAT 1" Super Duty" Pistol Impact Wrench	17
AC1777	AIRCAT 3/4" Super Duty" Impact Wrench	13
AC1778-VXL	AIRCAT 3/4" Super Duty" Impact Wrench	13
AC1870-P	AIRCAT 1" Pistol Impact Wrench	17
AC1890-P	AIRCAT 1" Pistol Impact Wrench	17
AC1900-A	AIRCAT 1" Straight Impact Wrench With 8" Extended Anvil	14
AC1900A-1	AIRCAT 1" Super Duty" Impact Wrench	14
AC1991	AIRCAT 1" Straight Impact Wrench With 6" Extended Anvil	14
AC1991-1	AIRCAT 1" Straight Impact Wrench	14
AC1992	AIRCAT 1" Straight Impact Wrench with 8" Extended Anvil NEW	14
AC1993-1-VXL	AIRCAT 1" Straight Impact Wrench	16
AC1993-VXL	AIRCAT 1" Straight Impact Wrench With 7" Extended Anvil	16
AC1994	AIRCAT 1" Straight Impact Wrench with 8" Extended Anvil NEW	15

RATCHETS		
AC800	AIRCAT 1/4" Mini Composite Single Pawl Ratchet	20
AC801	AIRCAT 3/8" Mini Composite Single Pawl Ratchet	20
AC802	AIRCAT 3/8" Composite Twin Pawl Ratchet	20
AC802-5	AIRCAT 1/2" Composite Twin Pawl Ratchet	20
AC804	AIRCAT 1/4" Mini Ratchet	21
AC805-HT	AIRCAT 3/8" Composite High Torque Ratchet	21
AC805-HT-5	AIRCAT 1/2" Composite High Torque Ratchet	21
AC806	AIRCAT 3/8" High Performance Ratchet	21
AC807	AIRCAT 3/8" Mini Ratchet NEW	22
AC807-25	AIRCAT 1/4" Mini Ratchet NEW	22
AC808-15	AIRCAT 15.3" Long Reach 3/8" Composite Ratchet	22
AC808-22	AIRCAT 22.5" Long Reach 3/8" Composite Ratchet	22
AC809	AIRCAT 3/8" Flat Head Ratchet NEW	22
AC809-5	AIRCAT 1/2" Flat Head Ratchet NEW	23
AC810	AIRCAT 3/8" Mini Ratchet	23
AC811	AIRCAT 1/4" 30° Flex Head Ratchet NEW	23

GRINDERS & CUT-OFF TOOLS		
AC6200	AIRCAT 6mm Straight Composite Mini Die Grinder	26
AC6201	AIRCAT 6mm Straight Composite Die Grinder	26
AC6210	AIRCAT 6mm Extended Straight Composite Die Grinder	26
AC6255	AIRCAT 6mm Angled Composite Die Grinder	26
AC6260	AIRCAT 6mm Straight 1.0 HP Composite Die Grinder	27
AC6265	AIRCAT 6mm Angled 1.0 HP Composite Die Grinder	27
AC6270	AIRCAT 6mm Extended Straight 1.0 HP Composite Die Grinder	27
AC6275-IND	AIRCAT 4" Composite Inside Cut-off Tool	29

MODEL NO.	DESCRIPTION	PAGE NO.
GRINDERS & CUT-OFF TOOLS		
AC6280	AIRCAT 6mm Angled 0.75 HP Spindle Lock Composite Die Grinder	28
AC6285	AIRCAT 6mm Straight 1.0 HP Spindle Lock Composite Die Grinder	28
AC6290	AIRCAT 6mm Straight 0.75 HP Reversible Composite Die Grinder	28
AC6295	AIRCAT 6mm Straight 0.6 HP Reversible Composite Die Grinder NEW	28
AC6340	AIRCAT 4-1/2" Angled Composite Grinder	29
AC6520	AIRCAT 3" Composite Reversible Cut-Off Tool	29
AC6530	AIRCAT 3" Flexi-Head Cut Off Tool	30
AC6560	AIRCAT 3" Cut Off Tool	30

DRILLS		
AC4337	AIRCAT 3/8" Capacity Keyed Composite Angled Drill	32
AC4338	AIRCAT 3/8" Capacity Keyless Composite Pistol Grip Drill - Keyless	32
AC4450	AIRCAT 1/2" Capacity Keyed Composite Drill - Side Assist Handle	33
AC4451	AIRCAT 1/2" Capacity Keyed Pistol Grip Vibration Reduced Drill	33

HAMMERS		
AC5100-A-T	AIRCAT 0.401" Shank Composite Hammer	37
AC5100-A	AIRCAT 0.401" Shank Composite Hammer KIT	37
AC5200-A-T	AIRCAT 0.401" Shank Long Stroke Composite Hammer	38
AC5200-A	AIRCAT 0.401" Shank Long Stroke Composite Hammer Kit	38
AC5250-A	AIRCAT 0.401" Super Duty Air Hammer NEW	39
AC5300-A-T	AIRCAT 0.498" Shank Super Duty Composite Hammer	40
AC5300-A	AIRCAT 0.498" Shank Super Duty Composite Hammer KIT	40

AIR SAW, NIBBLER AND NEEDLE SCALER		
AC6330	AIRCAT Nibbler	43
AC6350	AIRCAT Low Vibration Air Saw	43
AC6355	AIRCAT Reciprocating Air Saw NEW	43
AC6390	AIRCAT Compact Needle Scaler NEW	43

TYRE BUFFERS		
AC6400	AIRCAT Composite Tyre-Buffer	46
AC6402	AIRCAT Composite Tyre-Buffer Speed 2600RPM	46
AC6403	AIRCAT Composite Tyre-Buffer Speed 3600RPM	46

SANDERS & POLISHERS		
AC6310	AIRCAT 6" Dual Action Sander	50
AC6315	AIRCAT 3" Orbital Sander - Pistol Version NEW	50
AC6315K	AIRCAT 3" Orbital Sander Kit NEW	50
AC6320	AIRCAT Spot Sander	51
AC6320-K	AIRCAT Spot Sander and Polisher Kit	51
AC6370	AIRCAT Low Weight Composite Vertical Polisher	51
AC6700-1-332	AIRCAT 1" Composite 2.5mm Orbital Palm Sander Non Vac	47-48
AC6700-3-332	AIRCAT 3" Composite 2.5mm Orbital Palm Sander Non Vac	47-48
AC6700-3-332CV	AIRCAT 3" Composite 2.5mm Orbital Palm Sander Central Vac	47-48
AC6700-5-336	AIRCAT 5" Composite 5mm Orbital Palm Sander Non Vac	47-48
AC6700-5-336CV	AIRCAT 5" Composite 5mm Orbital Palm Sander Central Vac	47-48
AC6700-6-332	AIRCAT 6" Composite 2.5 mm Orbital Palm Sander Non Vac	47-48
AC6700-6-332CV	AIRCAT 6" Composite 2.5 mm Orbital Palm Sander Central Vac	47-48
AC6700-6-332SV	AIRCAT 6" Composite 2.5mm Orbital Palm Sander Hose & Bag	47-48
AC6700-6-336	AIRCAT 6" Composite 5mm Orbital Palm Sander Non Vac	47-48
AC6700-6-336CV	AIRCAT 6" Composite 5mm Orbital Palm Sander Central Vac	47-48
AC6700-6-336SV	AIRCAT 6" Composite 5mm Orbital Palm Sander Hose & Bag	47-48
AC6700-6GCV	AIRCAT 6" Geared 5mm Orbital Sander Central Vac	47-48
AC6700-8-GCV	AIRCAT 8" Geared 5mm Orbital Sander Central Vac	47-48
AC6700-JBS-332	AIRCAT Jitterbug Sander" 200 x 70mm NEW	47-48

NEW TOOLS AIRCAT 2023

IMPACT WRENCHES

AC1125

1/2" | SUPER-DUTY IMPACT WRENCH



Provides 1355Nm working torque and 1694Nm of loosening torque

Sets industry standard for weight and size in class

MORE INFORMATION
ON PAGE 12

IMPACT WRENCHES

AC1992

1" X 8" | EX IMPACT WRENCH



Provides 2440 Nm working torque and 2700 Nm of loosening torque

Low maintenance pin-less hammer provides ultimate reliability and added hitting power

MORE INFORMATION
ON PAGE 15

IMPACT WRENCHES

AC1994

1" X 8" | EX "SUPER DUTY" IMPACT WRENCH



Provides 3120 Nm working torque and 3400 Nm of loosening torque

Low maintenance pin-less hammer provides ultimate reliability and added hitting power

MORE INFORMATION
ON PAGE 15

RATCHETS

AC807

3/8" | "MINI" PALM RATCHET



50 Nm Maximum torque

300 RPM provides fast run-down

MORE INFORMATION
ON PAGE 22

RATCHETS

AC807-25

1/4" | "MINI" PALM RATCHET



47 Nm Maximum torque

300 RPM provides fast run-down

MORE INFORMATION
ON PAGE 22

RATCHETS

AC809

3/8" FLAT HEAD RATCHET



81 Nm Maximum torque

350 RPM provides fast run-down

MORE INFORMATION
ON PAGE 22

NEW TOOLS AIRCAT 2023

RATCHETS

AC809-5

1/2" FLAT HEAD RATCHET



81 Nm
Maximum torque

350 RPM provides
fast run-down

MORE INFORMATION
ON PAGE 23

HAMMERS

AC5250A-T

0.40T" SUPER DUTY AIR HAMMER



2,500 BPM

3" Piston stroke

4 position built-in
air regulator

MORE INFORMATION
ON PAGE 39

SANDERS

AC6315

3" ORBITAL SANDER



Low weight
composite housing

Top mounted one-hand
Forward/Reverse switch

Internal silencing system
reduces noise level to (88 dBA)

MORE INFORMATION
ON PAGE 50

RATCHETS

AC811

1/4" 30° FLEX HEAD RATCHET



48 Nm Maximum torque

240 RPM Free Speed

3 Position Flex Head design

MORE INFORMATION
ON PAGE 23

GRINDERS

AC6295

115° ANGLE DIE GRINDER



0.6 HP Motor

18,000 RPM

Spindle lock feature
for easy accessory change

MORE INFORMATION
ON PAGE 28

NEW TOOLS AIRCAT 2023

NEEDLE SCALER

AC6390

COMPACT NEEDLE SCALER



4,800 BPM

1-1/4" Stroke

Low weight compact design

MORE INFORMATION
ON PAGE 43

SANDERS

AC6700-JBS-332

JITTERBUG SANDER



MORE INFORMATION
ON PAGE 47-48

SANDERS

AC6315K

3" ORBITAL SANDER KIT



Low weight
composite housing

Top mounted one-hand
Forward/Reverse switch

Feather touch speed control trigger

MORE INFORMATION
ON PAGE 50

AIR SAW

AC6355

RECIPROCATING AIR SAW



5,000 SPM

Dual-Speed design for control

Quick change blade design retainer for
quick and easy blade changes

MORE INFORMATION
ON PAGE 43

IMPACT WRENCHES

AIRCAT impact wrenches offer the user a durable, high torque-producing tool that offers 85% more torque than industry standards as well as a significant reduction in noise. These wrenches have been created with the utmost care to ensure longevity and superior performance.

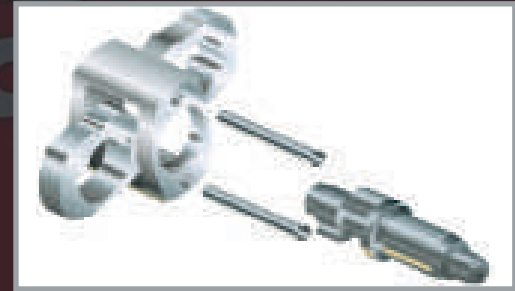


AIRCAT® IMPACT WRENCH MECHANISMS AND PERFORMANCE CHARACTERISTICS

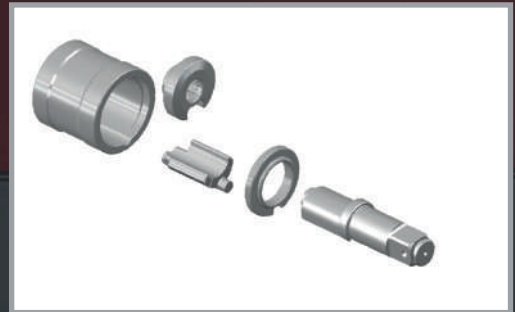
VIBROTHERM DRIVE® is a new AIRCAT® patented mechanism that provides faster blow frequency, high torque, low vibration and a longer working life than other conventional impact wrench mechanisms. In addition it reduces overall tool length. The cage is driven by the motor that drives the two hammers to generate two blows for each revolution, the elimination of hammer pins and the addition of the front hammer cage plate that retains the grease within the mechanism, reduces wear within the mechanism increasing working life



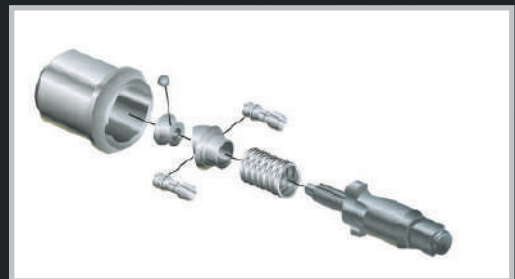
The TWIN HAMMER is the most widely used impact wrench mechanism that provides fast blow frequency and high torque. The mechanism is most widely used for AIRCAT® 3/8", 1/2" and 3/4" impact wrenches. The cage is driven by the motor that drives the twin hammers that rock on hammer pins that pass through the hammer cage to generate two blows for each revolution.



The PIN-LESS HAMMER is used in AIRCAT® 1" impact wrenches. The PIN-LESS mechanism has a more positive drive and uses less moving parts, this design increases reliability for heavy duty applications. The large single hammer provides hard hitting power to achieve rapid high torque. The cage is driven by the motor that drives the large single hammer to generate one hard hitting blow for each revolution.



The TWIN CLUTCH is featured in NITROCAT® 1/2" impact wrenches and is specifically designed to provide smooth and powerful operation and to create high initial torque. This mechanism outperforms other mechanism in high torque engine service and repair work and particularly for removal of stubborn crank shaft bolts. When the hammer rotates past the anvil a ball pushes the pins forward engaging them with the anvil, the pins are then pushed backwards by the spring, this mechanism has very fast acceleration that creates the high initial torque



The JUMBO HAMMER is used in AIRCAT® and NITROCAT® compact impact wrenches. The JUMBO hammer enables AIRCAT® to provide high torque and high reliability in its smallest impact wrenches. The cage is driven by the motor that drives the single JUMBO hammer that rocks on hammer pins that pass through the hammer cage to generate one hard hitting blow for each revolution.



The TWO JAW CLUTCH is featured exclusively in the AIRCAT® 1890-P 1" Pistol Grip Impact Wrench. The TWO JAW clutch provides unparalleled torque output and longer life than any other mechanism. The cage is driven by the motor and the jaws on the cage directly drive the anvil. This action eliminates the customary hammering, increasing torque and reducing wear. The internal spring then disengages the jaws to turn to the next drive cycle. The mechanism is ideal for heavy duty off road vehicle work and steel erection.



AC1057-TH | 1/2" | STUBBY IMPACT WRENCH



- PROVIDES 680 NM MAXIMUM TORQUE;
- ONLY 97.79 MM OVERALL LENGTH;
- LOW WEIGHT ALUMINUM ALLOY HOUSING;
- RELIABLE JUMBO HAMMER MECHANISM DELIVERS MAXIMUM POWER, WHILE INCREASING RELIABILITY;
- PATENTED "SILENCING TECHNOLOGY" REDUCES THE NOISE LEVEL TO 89 DBA;
- TRIGGER MOUNTED COMBINED REVERSE AND POWER MANAGEMENT SWITCH PROVIDES ULTIMATE CONTROL AND ONE-HAND OPERATION;

AC1056-XL | 1/2" | COMPOSITE COMPACT IMPACT



- PROVIDES 750 NM MAXIMUM TORQUE;
- LOW WEIGHT COMPOSITE HOUSING REDUCES WEIGHT TO 1.13 KG;
- RELIABLE JUMBO HAMMER MECHANISM DELIVERS MAXIMUM POWER, WHILE INCREASING RELIABILITY;
- PATENTED "SILENCING TECHNOLOGY" REDUCES THE NOISE LEVEL TO 85 DBA;
- PATENTED GRIP HAS BEEN ERGONOMICALLY DESIGNED TO PERFECTLY FIT THE HAND, PROVIDING UNMATCHED COMFORT FOR THE USER;
- NEW PATENTED TRIGGER MOUNTED COMBINED REVERSE AND POWER MANAGEMENT SWITCH PROVIDES ULTIMATE CONTROL AND ONE-HAND OPERATION;

AC1058-VXL & AC1059-VXL | 1/2" & 3/8" | COMPACT IMPACT WRENCH



- PROVIDES 750 NM MAXIMUM TORQUE;
- VIBROTHERM DRIVE® IMPACT WRENCHES INCORPORATE THE COMPLETELY NEW AIRCAT DESIGN IMPACT WRENCH MECHANISM (PATENT PENDING);
- THE NEW MECHANISM REDUCES VIBRATION LEVELS BY BETWEEN 30%-40% AND INCREASES THE LIFE OF THE MECHANISM BY 50%;
- THE LATEST PATENTED AIRCAT MUFFLER SYSTEM PRODUCES THE CHARACTERISTIC AIRCAT UNMATCHED LOW NOISE LEVELS;
- THE PATENTED GRIP DESIGN PROVIDES THE OPERATOR THE ULTIMATE COMFORT;
- INVESTMENT INTO TOOLING AND MATERIALS AND A TRIPLE INJECTION MOLDING PROCESSES ENABLE AIRCAT TO PRODUCE COSMETIC DESIGNS THAT ARE UNMATCHED IN THE INDUSTRY;
- "THREE YEAR WARRANTY";

SPECIFICATIONS

Model No.	Max. Torque (ft-lb) @90 psi	Max. Torque (Nm)	Square Drive (in.)	Impacts Per Minute	Free Speed (RPM)	Bolt Capacity (mm)	Weight (kg)	Length (mm)	Vibration Levels M/Sec2	Air Cons. (CFM)	Rec. Hose Size (in.)
AC1056-XL	550	750	1/2	1650	9,000	15	1.13	107.95	9.9	8	3/8
AC1057-TH	500	680	1/2	1600	9,000	13	1.27	97.79	12.5	6.0	3/8
AC1058-VXL	550	750	1/2	1700	9,000	15	1.27	111.76	4.3	8	3/8
AC1059-VXL	550	750	3/8	1700	9,000	15	1.27	111.76	4.3	8	3/8

AC1431 | 1/2" | IMPACT WRENCH



- PROVIDES 1080 NM MAXIMUM TORQUE AND 1355 NM OF LOOSENING TORQUE;
- HARD HITTING TWIN HAMMER MECHANISM DELIVERS MAXIMUM POWER;
- GRIP IS ERGONOMICALLY DESIGNED TO PERFECTLY FIT THE HAND, PROVIDING UNMATCHED COMFORT FOR THE USER;
- CROSS BOLT FORWARD/REVERSE AND POWER MANAGEMENT CONTROL;
- TRIPLE HEAT TREATED NI-CR-MO ALLOY STEEL HAMMER MECHANISM PARTS AND ANVIL PROVIDE ULTIMATE RELIABILITY;

AC1450 & AC1450-2 | 1/2" | IMPACT WRENCH



- PROVIDES 1090 NM MAXIMUM TORQUE;
- REFINED DESIGN TWIN HAMMER INCREASES BLOW; FREQUENCY AND BLOW EFFICIENCY;
- VERY FAST TORQUE DEVELOPMENT;
- 9,000 RPM FREE SPEED PROVIDES FAST RUN-DOWN;
- ERGONOMICALLY DESIGNED GRIP PROVIDES MAXIMUM OPERATING COMFORT;
- SIX POSITION POWER MANAGEMENT SWITCH IN BACK CAP PROVIDES ULTIMATE CONTROL;
- GREAT BALANCE AND HANDLING COMFORT;
- BRUSHED ALUMINUM HOUSING FINISH;

AC1280-IND | 1/2" | COMPOSITE IMPACT WRENCH



- REFINED DESIGN TWIN HAMMER AND BIASED MOTORS PROVIDE HIGH TORQUE;
- LOW WEIGHT COMPOSITE HOUSING;
- ERGONOMIC TRIGGER DESIGN WITH FEATHER CONTROL;
- PUSH BUTTON FORWARD / REVERSE FOR INSTANT CHANGE IN DIRECTION;
- FOUR POSITION POWER MANAGEMENT / SWITCH CONVENIENTLY LOCATED IN THE BACK CAP;
- HAMMER CASES ON AIRCAT INDUSTRIAL MODELS ARE NOT TITANIUM FINISH;
- BUILT-IN SIDE IMPACT BUFFERS;
- OVER-MOLDED ERGONOMIC GRIP;

SPECIFICATIONS

Model No.	Max. Torque (ft-lb) @90 psi	Max. Torque (Nm)	Square Drive (in.)	Impacts Per Minute	Free Speed (RPM)	Bolt Capacity (mm)	Weight (kg)	Length (mm)	Vibration Levels M/Sec2	Air Cons. (CFM)	Rec. Hose Size (in.)
AC1431	800	1080	1/2	1600	9,000	13	2.5	182.8	12.5	8	3/8
AC1450	800	1090	1/2	1200	9,000	15	2.20	177.80	13.5	8	3/8
AC1450-2	800	1090	1/2 x 2	1200	9,000	15	2.32	228.60	14.0	8	3/8
AC1280-IND	805	1085	1/2	1600	8,000	15	2.09	168.21	8.1	8	3/8

AC1150 | 1/2" | IMPACT WRENCH



- PROVIDES 1700 NM MAXIMUM TORQUE;
- MOST POWERFUL 1/2" IMPACT IN IT'S CLASS;
- HARD HITTING TWIN HAMMER MECHANISM;
- DURABLE COMPOSITE HOUSING;
- PATENTED ERGONOMICALLY DESIGNED HANDLE;
- PATENTED QUIET TUNED EXHAUST (86 DECIBELS);
- PATENTED EASY OPERATION FLIP LEVER FORWARD AND REVERSE;

AC1178 | 1/2" | IMPACT WRENCH



- PROVIDES 1770 NM MAXIMUM TORQUE;
- VIBROTHERM DRIVE® IMPACT WRENCHES INCORPORATE THE COMPLETELY NEW AIRCAT DESIGN IMPACT WRENCH MECHANISM (PATENT PENDING);
- THE NEW MECHANISM REDUCES VIBRATION LEVELS BY BETWEEN 30%-40% AND INCREASES THE LIFE OF THE MECHANISM BY 50%;
- THE LATEST PATENTED AIRCAT MUFFLER SYSTEM PRODUCES THE CHARACTERISTIC AIRCAT UNMATCHED LOW NOISE LEVELS;
- IMPROVED DESIGN ERGONOMIC GRIP FOR MAXIMUM OPERATING COMFORT;
- VERY FAST TORQUE DEVELOPMENT;
- COMBINED SIX POSITION POWER MANAGEMENT AND REVERSE KNOB FOR ULTIMATE CONTROL;

SPECIFICATIONS

Model No.	Max. Torque (ft-lb) @90 psi	Max. Torque (Nm)	Square Drive (in.)	Impacts Per Minute	Free Speed (RPM)	Bolt Capacity (mm)	Weight (kg)	Length (mm)	Vibration Levels M/Sec2	Air Cons. (CFM)	Rec. Hose Size (in.)	Air Inlet (in.) BSP
AC1150	900	1250	1/2	1400	9,000	15	2.04	190.50	8.1	8	3/8	1/4
AC1178-VXL	950	1290	1/2	1400	7,500	19	2.90	203.20	6.5	8	1/4	1/4



- PROVIDES 1355NM MAXIMUM TORQUE AND 1694NM OF LOOSENING TORQUE;
- SETS INDUSTRY STANDARD FOR WEIGHT AND SIZE IN CLASS;
- HARD HITTING TWIN HAMMER MECHANISM;
- DURABLE COMPOSITE HOUSING;
- PATENTED ERGONOMICALLY DESIGNED HANDLE;
- PATENTED QUIET TUNED EXHAUST (86 DBA);
- PATENTED EASY OPERATION FLIP LEVER FORWARD AND REVERSE;

SPECIFICATIONS

Model No.	Max. Torque (ft-lb) @90 psi	Max. Torque (Nm)	Square Drive (in.)	Impacts Per Minute	Free Speed (RPM)	Bolt Capacity (mm)	Weight (kg)	Length (mm)	Vibration Levels M/ Sec2	Air Cons. (CFM)	Rec. Hose Size (in.)	Air Inlet (in.) BSP
AC1125	1,249	1694	1/2	1600	8,500	15	1.72	180,34	8.1	8	3/8	1/4

AC1777 | 3/4" | "SUPER DUTY" IMPACT WRENCH



- PROVIDES 1900 NM MAXIMUM TORQUE ;
- REFINED DESIGN TWIN HAMMER INCREASES BLOW EFFICIENCY AND DOUBLES HAMMER MECHANISM LIFE;
- HAMMER PARTS ARE MADE FROM TRIPLE HEAT TREATED NI-CR-MO ALLOY STEEL FOR ULTIMATE RELIABILITY;
- IMPROVED DESIGN ERGONOMIC GRIP FOR MAXIMUM OPERATING COMFORT;
- VERY FAST TORQUE DEVELOPMENT;
- COMBINED SIX POSITION POWER MANAGEMENT AND REVERSE KNOB FOR ULTIMATE CONTROL;

AC1600-TH-A | 3/4" | "SUPER DUTY" IMPACT WRENCH



- PROVIDES 1900 NM MAXIMUM TORQUE;
- HARD HITTING "SUPER DUTY" TWIN HAMMER MECHANISM;
- BEST SUITED FOR BUS/LARGE AUTOMOTIVE USE, LARGE AGRICULTURAL SERVICE VEHICLES & LARGE BOLT ASSEMBLY;
- PATENTED ERGONOMICALLY DESIGNED HANDLE;
- PATENTED QUIET TUNED EXHAUST (86 DECIBELS);
- PATENTED EASY OPERATION FLIP LEVER FORWARD AND REVERSE;
- COMBINED THROUGH HOLE AND FRICTION RING SOCKET RETAINER;

AC1778-VXL | 3/4" | IMPACT WRENCH



- PROVIDES 2300 NM MAXIMUM TORQUE;
- VIBROTHERM DRIVE® IMPACT WRENCHES INCORPORATE THE COMPLETELY NEW AIRCAT DESIGN IMPACT WRENCH MECHANISM (PATENT PENDING);
- THE NEW MECHANISM REDUCES VIBRATION LEVELS BY BETWEEN 30%-40% AND INCREASES THE LIFE OF THE MECHANISM BY 50%;
- THE LATEST PATENTED AIRCAT MUFFLER SYSTEM PRODUCES THE CHARACTERISTIC AIRCAT UNMATCHED LOW NOISE LEVELS;
- THE PATENTED GRIP DESIGN PROVIDE THE CUSTOMARY AIRCAT OPERATOR COMFORT;
- INVESTMENT INTO TOOLING AND MATERIALS AND A TRIPLE INJECTION MOLDING PROCESSES ENABLES AIRCAT TO PRODUCE COSMETIC DESIGNS THAT ARE UNMATCHED IN THE INDUSTRY;
- "THREE YEAR WARRANTY";

SPECIFICATIONS

Model No.	Max. Torque (ft-lb) @90 psi	Max. Torque (Nm)	Square Drive (in.)	Impacts Per Minute	Free Speed (RPM)	Bolt Capacity (mm)	Weight (kg)	Length (mm)	Vibration Levels M/Sec2	Air Cons. (CFM)	Rec. Hose Size (in.)	Air Inlet (in.) BSP
AC1777	1400	1900	3/4	1600	9000	13	3.4	97.79	12.5	60	3/8	1/4
AC1600-TH	1400	1900	3/4	900	4,500	22	3.67	234.95	7.4	10	1/2	3/8
AC1778-VXL	950	1290	3/4	1400	7,500	19	2.90	203.20	6.5	8	1/4	1/4

AC1900-A & AC1900A-1 | 1" X 8" | EXTENDED "SUPER DUTY" IMPACT WRENCH



- PROVIDES 2580 NM MAXIMUM TORQUE;
- UNIQUE LOW WEAR PINLESS HAMMER;
- ALUMINUM HOUSING WITH RUBBER OVER MOLD FOR INCREASED PROTECTION;
- ERGONOMIC TRIGGER WITH RUBBER INLAY FOR COMFORT;
- RUGGED BOLT-ON SIDE ASSIST HANDLE CAN BE REPOSITIONED ON RIGHT OR LEFT;
- TRIPLE HEAT TREATED NI-CR-MO ALLOY STEEL HAMMER MECHANISM PARTS AND ANVIL PROVIDE ULTIMATE RELIABILITY;
- COMBINED THROUGH HOLE AND FRICTION RING SOCKET RETAINER;



AC1900-A-1
Short anvil
available

AC1991 & AC1991-1 | 1" X 7" | EXTENDED IMPACT WRENCH



- PROVIDES 2850 NM MAXIMUM TORQUE;
- UNMATCHED POWER TO WEIGHT RATIO;
- EXHAUST CAN BE LOCATED AT EITHER THE TOP OR BOTTOM OF TOOL;
- RUBBER HANDLE GRIPS AND RUBBERIZED TRIGGER INSERTS FOR ULTIMATE COMFORT;
- COMBINED FRICTION-RING AND THROUGH-HOLE SOCKET RETAINERS;



AC1991-1 2" Short anvil available



SPECIFICATIONS

Model No.	Max. Torque (ft-lb) @90 psi	Max. Torque (Nm)	Square Drive (in.)	Impacts Per Minute	Free Speed (RPM)	Bolt Capacity (mm)	Weight (kg)	Length (mm)	Vibration Levels M/ Sec2	Air Cons. (CFM)	Rec. Hose Size (in.)	Air Inlet (in.) BSP
AC1900-A	1900	2580	1 x 8	1600	5,500	32	11.79	558.80	12.1	12	1/2	1/2
AC1900-A-1	1900	2580	1	1600	5,500	32	10.97	393.70	12.0	12	1/2	1/2
AC1991	2100	2850	1 x 7	1600	6,000	32	9.38	482.60	8.8	8	1/2	1/2
AC1991-1	2100	2850	1	1600	6,000	32	7.57	327.66	8.8	8	1/2	1/2

AC1992 | 1" X 8" | EXTENDED STRAIGHT IMPACT WRENCH



- PROVIDES 2440 NM MAXIMUM TORQUE AND 2700 NM OF LOOSENING TORQUE;
- LOW MAINTENANCE PIN-LESS HAMMER PROVIDES ULTIMATE RELIABILITY AND ADDED HITTING POWER;
- COMBINED FORWARD/REVERSE AND POWER MANAGEMENT SWITCH;
- TRIPLE HEATED NI-CR-MO ALLOY STEEL HAMMER MECHANISM PARTS AND ANVIL PROVIDES ULTIMATE RELIABILITY;
- COMBINED THROUGH HOLE AND FRICTION RING SOCKET RETAINER;



AC1992-1
Short anvil
available

AC1994 | 1" X 8" | EXTENDED "SUPER DUTY" STRAIGHT IMPACT WRENCH



- PROVIDES 3120 NM MAXIMUM TORQUE AND 3400 NM OF LOOSENING TORQUE;
- LOW MAINTENANCE PIN-LESS HAMMER PROVIDES ULTIMATE RELIABILITY AND ADDED HITTING POWER;
- COMBINED FORWARD/REVERSE AND POWER MANAGEMENT SWITCH;
- TRIPLE HEAT TREATED ALLOY STEEL HAMMER CAGE AND ANVIL;
- RUGGED CONSTRUCTION WITH RELIABLE BOLT-ON ASSIST SIDE HANDLE;
- HAMMER CASE CAN BE REPOSITIONED FOR THE SIDE HANDLE TO BE ON RIGHT OR LEFT SIDE;
- BRUSHED ALUMINUM MOTOR HOUSING;
- AIRCAT'S MOST RELIABLE 1" IMPACT WRENCH;
- COMBINED THROUGH HOLE AND FRICTION RING SOCKET RETAINER;

SPECIFICATIONS

Model No.	Max. Torque (ft-lb) @90 psi	Max. Torque (Nm)	Square Drive (in.)	Impacts Per Minute	Free Speed (RPM)	Bolt Capacity (mm)	Weight (kg)	Length (mm)	Vibration Levels M/Sec2	Air Cons. (CFM)	Rec. Hose Size (in.)	Air Inlet (in.) BSP
AC1992	1800	2440	1 x 8	1600	5000	25.4	11.79	558.80	12.1	12	1/2	1/2
AC1992-1	1800	2440	1 x 1	1600	5000	25.4	10.52	393.70	12.0	12	1/2	1/2
AC1994	2300	3120	1 x 8	1100	4500	25.4	15.87	660.40	12.0	16	1/2	1/2

AC1993-VXL | 1" X 7" | VIBROTHERM IMPACT WRENCH

VIBROTHERM[®] by AIRCAT[®] DRIVE



- PROVIDES 3110 NM OF MAXIMUM TORQUE;
- VIBROTHERM DRIVE[®] IMPACT WRENCHES INCORPORATES THE NEW PATENTED AIRCAT DESIGN IMPACT WRENCH MECHANISM ;
- THE NEW MECHANISM REDUCES VIBRATION LEVELS BY 30%-40% AND INCREASES THE LIFE OF THE MECHANISM BY 50%;
- 6,000 RPM FREE SPEED;
- UNMATCHED POWER-TO-WEIGHT RATIO;
- RUBBER HANDLE GRIP AND RUBBERIZED TRIGGER INSERTS FOR ULTIMATE COMFORT;
- COMBINED FRICTION-RING AND THROUGH-HOLE SOCKET RETAINER
- INVESTMENT IN TOOLING, MATERIALS AND THE TRIPLE INJECTION MOLDING PROCESSES ENABLE AIRCAT TO PRODUCE COSMETIC DESIGNS THAT ARE UNMATCHED IN THE INDUSTRY;

AC1993-1-VXL | 1" X 2" | VIBROTHERM IMPACT WRENCH

VIBROTHERM[®] by AIRCAT[®] DRIVE



- PROVIDES 3110 NM OF MAXIMUM TORQUE;
- VIBROTHERM DRIVE[®] IMPACT WRENCHES INCORPORATES THE NEW PATENTED AIRCAT DESIGN IMPACT WRENCH MECHANISM ;
- THE NEW MECHANISM REDUCES VIBRATION LEVELS BY 30%-40% AND INCREASES THE LIFE OF THE MECHANISM BY 50%;
- 6,000 RPM FREE SPEED;
- UNMATCHED POWER-TO-WEIGHT RATIO;
- RUBBER HANDLE GRIP AND RUBBERIZED TRIGGER INSERTS FOR ULTIMATE COMFORT;
- COMBINED FRICTION-RING AND THROUGH-HOLE SOCKET RETAINER
- INVESTMENT IN TOOLING, MATERIALS, AND THE TRIPLE INJECTION MOLDING PROCESSES ENABLES AIRCAT TO PRODUCE COSMETIC DESIGNS THAT ARE UNMATCHED IN THE INDUSTRY;

SPECIFICATIONS

Model No.	Max. Torque (ft-lb) @90 psi	Max. Torque (Nm)	Square Drive (in.)	Impacts Per Minute	Free Speed (RPM)	Bolt Capacity (mm)	Weight (kg)	Length (mm)	Vibration Levels M/Sec2	Air Cons. (CFM)	Rec. Hose Size (in.)	Air Inlet (in.) BSP
AC1993-VXL	2100	2850	1 x 7	950	6,000	32	9.16	474.98	12.7	10	1/2	1/2
AC1993-1-VXL	2100	2850	1 x 2	950	6,000	32	8.39	340.36	12.7	10	1/2	1/2

AC1600-TH-A1 | 1" | COMPOSITE IMPACT WRENCH



- PROVIDES 1900 NM MAXIMUM TORQUE;
- HARD HITTING "SUPER DUTY" TWIN HAMMER MECHANISM
- BEST SUITED FOR BUS/LARGE AUTOMOTIVE USE, LARGE AGRICULTURAL SERVICE VEHICLES & LARGE BOLT ASSEMBLY;
- PATENTED ERGONOMICALLY DESIGNED HANDLE;
- PATENTED QUIET TUNED EXHAUST (86 DECIBELS);
- PATENTED EASY OPERATION FLIP LEVER FORWARD AND REVERSE;
- COMBINED THROUGH HOLE AND FRICTION RING SOCKET RETAINER;

AC1870-P | 1" | "SUPER DUTY" PISTOL IMPACT WRENCH



- PROVIDES 2850 NM MAXIMUM TORQUE;
- UNMATCHED POWER TO WEIGHT RATIO - WEIGHS ONLY 5.87 KG;
- 1870-P HAS LOW WEIGHT IMPACT-RESISTANT HOUSING;
- FEATURES COMBINED FRICTION-RING AND THROUGH-HOLE SOCKET RETAINERS;
- CRANKED SIDE HANDLE DESIGN AVOIDS OPERATORS HAND GETTING TOO CLOSE TO WORK AREA;

AC1890-P | 1" | PISTOL IMPACT WRENCH



- PROVIDES 2750 NM MAXIMUM TORQUE;
- TWO JAW CLUTCH PROVIDES UNPARALLELED TORQUE OUTPUT AND INCREASES THE LIFE OF THE HAMMER BEYOND OTHER IMPACT MECHANISMS;
- THE TWO JAW CLUTCH DOES NOT WASTE ENERGY; THIS COMBINED WITH THE PRECISION AIR MOTOR DRAMATICALLY REDUCES AIR CONSUMPTION OVER OTHER 1" IMPACT WRENCHES TO 24.5CFM WHILST FREE RUNNING AND 6.1CFM ON AVERAGE;
- DESIGNED FOR FLEET AND OFF ROAD VEHICLE SERVICE AND STEEL ERECTION
- STEEL HAMMER CASE AND HEAVY DUTY CAST HOUSING HANDLE PROVIDE ULTIMATE RELIABILITY
- COMBINED THROUGH HOLE AND FRICTION RING SOCKET RETAINER

SPECIFICATIONS

Model No.	Max. Torque (ft-lb) @90 psi	Max. Torque (Nm)	Square Drive (in.)	Impacts Per Minute	Free Speed (RPM)	Bolt Capacity (mm)	Weight (kg)	Length (mm)	Vibration Levels M/Sec2	Air Cons. (CFM)	Rec. Hose Size (in.)	Air Inlet (in.) BSP
AC1600-TH-A1	1400	1900	1	1100	4,500	32	3.74	234.95	7.4	10	1/2	3/8
AC1870-P	2100	2850	1	1400	7,500	32	5.87	271.78	8.6	7.5	1/2	1/2
AC1890-P	2000	2750	1	1200	4,200	32	10.88	279.40	12.6	6.1	1/2	1/2

INTENSITY, RESILIENCE AND EFFICIENCY
TO THE MAX



RATCHETS

The Aircat range of Ratchets has now been expanded to include Impacting , long reach and also sealed flat head ratchets, all designed for the challenges presented in todays workplaces.



AC800 | 1/4" | MINI COMPOSITE SINGLE PAWL RATCHET



- 50 NM MAXIMUM TORQUE;
- STRONGEST 1/4" RATCHET IN ITS CLASS!;
- SINGLE PAWL MECHANISM;
- FAST RUNDOWN 320 RPM;
- SUPERIOR INTERNAL MECHANICS;
- PATENTED QUIET TUNED EXHAUST (82 DBA);
- FEATHER TRIGGER FOR CONTROL;
- ERGONOMICALLY DESIGNED HOUSING;
- MOST COMFORTABLE TRIGGER LEVER IN THE INDUSTRY;

AC801 | 3/8" | MINI COMPOSITE SINGLE PAWL RATCHET



- 50 NM MAXIMUM TORQUE;
- STRONGEST 3/8" RATCHET IN ITS CLASS!;
- SINGLE PAWL MECHANISM;
- FAST RUNDOWN 320 RPM;
- SUPERIOR INTERNAL MECHANICS;
- PATENTED QUIET TUNED EXHAUST (82 DBA);
- FEATHER TRIGGER FOR CONTROL;
- ERGONOMICALLY DESIGNED HOUSING;
- MOST COMFORTABLE TRIGGER LEVER IN THE INDUSTRY;

AC802 | 3/8" | COMPOSITE TWIN PAWL RATCHET



- 100 NM MAXIMUM TORQUE;
- DURABLE TWIN PAWL MECHANISM;
- FAST RUNDOWN 280 RPM;
- PATENTED QUIET TUNED EXHAUST (82 DBA);
- FEATHER TRIGGER FOR CONTROL;
- ERGONOMICALLY DESIGNED HOUSING;
- MOST COMFORTABLE TRIGGER LEVER IN THE INDUSTRY;

AC802-5 | 1/2" | COMPOSITE TWIN PAWL RATCHET



- 100 NM MAXIMUM TORQUE;
- DURABLE TWIN PAWL MECHANISM;
- FAST RUNDOWN 280 RPM;
- PATENTED QUIET TUNED EXHAUST (82 DBA);
- FEATHER TRIGGER FOR CONTROL;
- ERGONOMICALLY DESIGNED HOUSING;
- MOST COMFORTABLE TRIGGER LEVER IN THE INDUSTRY;

SPECIFICATIONS

Model No.	Max. Torque (ft-lb) @90 psi	Max. Torque (Nm)	Square Drive (in.)	Free Speed (RPM)	Bolt Ca- pacity (mm)	Weight (kg)	Length (mm)	Vibration Levels M/ Sec2	Air Cons. (CFM)	Rec. Hose Size (in.)	Air Inlet (in.) BSP
AC800	35	50	1/4	320	10	0.72	215.90	2.3	4	3/8	1/4
AC801	35	50	3/8	320	10	0.73	215.90	2.3	4	3/8	1/4
AC802	70	100	3/8	280	10	1.24	266.70	3.2	4	3/8	1/4
AC802-5	70	100	1/2	280	10	1.24	266.70	3.2	4	3/8	1/4

AC804 | 1/4" | MINI COMPOSITE SINGLE PAWL RATCHET



- 40 NM MAXIMUM TORQUE;
- 280 RPM PROVIDES FAST RUN-DOWN;
- RATCHET HEAD INCREASES RELIABILITY AND ELIMINATES "LOOSENING" OF THE RATCHET HEAD;
- UNIQUELY DESIGNED TRANSMISSION GEAR INCREASES THE RATE OF TORQUE BUILD-UP;
- ERGONOMIC COMPOSITE OVER MOLD GRIP PROVIDES COMFORT;

AC805-HT | 3/8" | HIGH TORQUE RATCHET



- 180 NM MAXIMUM TORQUE;
- LATEST DESIGN RATCHET HEAD ELIMINATES "SPREADING";
- RELIABLE SINGLE PAWL DESIGN;
- EXTRA LARGE RATCHET HEAD INCREASES RELIABILITY;
- RAPID RESPONSE AND VARIABLE SPEED TRIGGER;
- QUIET FOR SUCH A POWERFUL RATCHET (84 DBA);
- ERGONOMICALLY DESIGNED CONTOURED GRIP AND TRIGGER PROVIDE ULTIMATE OPERATING COMFORT;

AC805-HT-5 | 1/2" | HIGH TORQUE RATCHET



- 180 NM MAXIMUM TORQUE;
- LATEST DESIGN RATCHET HEAD ELIMINATES "SPREADING";
- RELIABLE SINGLE PAWL DESIGN;
- EXTRA LARGE RATCHET HEAD INCREASES RELIABILITY;
- RAPID RESPONSE AND VARIABLE SPEED TRIGGER;
- QUIET FOR SUCH A POWERFUL RATCHET (84 DBA);
- ERGONOMICALLY DESIGNED CONTOURED GRIP AND TRIGGER PROVIDE ULTIMATE OPERATING COMFORT;

AC806 | 3/8" | HIGH PERFORMANCE RATCHET



- 108 NM OF MAXIMUM TORQUE;
- 200 RPM;
- VARIABLE SPEED THROTTLE FOR CONTROL;
- SOFT TOUCH COATED HANDLE GRIP FOR COMFORT;
- 360 ROTATIONAL EXHAUST DIRECTS AIR AWAY FROM USER AND WORK AREA;
- ENLARGED RATCHET HEAD FOR RELIABILITY;

SPECIFICATIONS

Model No.	Max. Torque (ft-lb) @90 psi	Max. Torque (Nm)	Square Drive (in.)	Free Speed (RPM)	Bolt Ca- pacity (mm)	Weight (kg)	Length (mm)	Vibration Levels M/ Sec2	Air Cons. (CFM)	Rec. Hose Size (in.)	Air Inlet (in.) BSP
AC804	30	40	1/4	280	10	0.73	181.61	2.3	4	3/8	1/4
AC805-HT	130	180	3/8	180	16	1.49	316.23	6.6	6	3/8	1/4
AC805-HT-5	130	180	1/2	180	16	1.49	316.23	6.6	6	3/8	1/4
AC806	80	108	3/8	200	10	1.18	276.86	3.2	4	3/8	1/4

AC807 | 3/8" | "MINI" RATCHET



- 50 NM MAXIMUM TORQUE;
- 300 RPM PROVIDES FAST RUN-DOWN;
- BUILT-IN QUICK SOCKET RELEASE BUTTON;
- ERGONOMIC COMPOSITE OVER MOLD GRIP PROVIDES COMFORT;
- ONLY 13.7 CM LONG AND WEIGHS ONLY 0.49 KG;
- EXCELLENT FOR GETTING INTO CONFINED SPACES;

AC807-25 | 1/4" | "MINI" RATCHET



- 47 NM MAXIMUM TORQUE;
- 300 RPM PROVIDES FAST RUN-DOWN;
- ERGONOMIC COMPOSITE OVER MOLD GRIP PROVIDES COMFORT;
- GREAT FOR WORK AROUND RADIATORS AND CONFINED SPACES;
- ONLY 13.7 CM LONG AND WEIGHS ONLY 0.49 KG;
- EXCELLENT FOR GETTING INTO CONFINED SPACES;

AC808 | LONG REACH SERIES RATCHETS



- 808-15 50 NM MAXIMUM TORQUE (15.3" LONG);
- 808-15-25 50 NM MAXIMUM TORQUE (15.3" LONG);
- 808-22 90 NM MAXIMUM TORQUE (22.5" LONG);
- EXCLUSIVE AIRCAT DESIGN;
- EXTENDED DRIVE SHAFTS PROVIDE ACCESS FOR HARD TO REACH FASTENERS;
- HIGH GRADE MATERIALS AND ADDITIONAL SUPPORT BEARINGS PROVIDE RELIABILITY;

AC809 | 3/8" | FLAT HEAD RATCHET



- 81 NM MAXIMUM TORQUE;
- 350 RPM RUN-DOWN SPEED;
- LOW PROFILE FLAT HEAD ALLOWS ACCESS INTO CONFINED WORK AREAS;
- SEALED HEAD DESIGN ELIMINATES DIRT AND DEBRIS ENTERING THE RATCHET MECHANISM INCREASING RELIABILITY;
- CONVENIENT AND COMFORTABLE TRIGGER OPERATION;
- QUICK CHANGE ROTATIONAL FORWARD/REVERSE SWITCH;
- 360° ROTATIONAL EXHAUST DEFLECTOR ALLOWS EXHAUST AIR TO BE DIRECTED AS PREFERRED;

SPECIFICATIONS

Model No.	Max. Torque (ft-lb) @90 psi	Max. Torque (Nm)	Square Drive (in.)	Free Speed (RPM)	Bolt Capacity (mm)	Weight (kg)	Length (mm)	Vibration Levels M/Sec2	Air Cons. (CFM)	Rec. Hose Size (in.)	Air Inlet (in.) BSP
AC807	35	50	3/4	300	9.5	0.49	137.16	2.3	3	3/8	1/4
AC807-25	35	50	1/4	300	9.5	0.49	137.16	2.3	3	3/8	1/4
AC808-15 / 808-15-25	30	50	3/8 1/4	200	10	1.4	388.62	5.7	4	3/8	1/4
AC808-22	30	88	3/8	160	10	1.95	571.50	5.7	6	3/8	1/4
AC809	60	81	3/8	350	10	1.31	314.96	2.3	4	3/8	1/4

AC809-5 | 1/2" | FLAT HEAD RATCHET



- 81 NM MAXIMUM TORQUE;
- 350 RPM RUN-DOWN SPEED;
- LOW PROFILE FLAT HEAD ALLOWS ACCESS INTO CONFINED WORK AREAS;
- SEALED HEAD DESIGN ELIMINATES DIRT AND DEBRIS ENTERING THE RATCH-ET MECHANISM INCREASING RELIABILITY;
- CONVENIENT AND COMFORTABLE TRIGGER OPERATION;
- QUICK CHANGE ROTATIONAL FORWARD/REVERSE SWITCH;
- 360° ROTATIONAL EXHAUST DEFLECTOR ALLOWS EXHAUST AIR TO BE DI-RECTED AS PREFERRED;

AC810 | 3/8" | STUBBY IMPACT COMPOSITE RATCHET



- 50 FT-LB MAXIMUM TORQUE
- 550 RPM PROVIDES ULTRA FAST RUN-DOWN
- ROLLER CLUTCH IMPACT MECHANISM PREVENTS KICK-BACK
- FWD/REV SWITCH AND SAFETY LOCK PREVENTS UNWANTED DIRECTIONAL CHANGES
- SILENCING TECHNOLOGY REDUCES THE NOISE LEVEL TO 86 DBA

AC811 | 1/4" | 30° FLEX HEAD RATCHET



- 48 NM MAXIMUM TORQUE
- 240 RPM FREE SPEED
- 3 POSITION FLEX HEAD DESIGN
- ERGONOMICALLY DESIGNED HOUSING
- FEATHER TRIGGER FOR CONTROL
- PATENTED QUIET TUNED EXHAUST (76 DBA)

SPECIFICATIONS

Model No.	Max. Torque (ft-lb) @90 psi	Max. Torque (Nm)	Square Drive (in.)	Impacts Per Minute	Free Speed (RPM)	Bolt Capacity (mm)	Weight (kg)	Length (mm)	Vibration Levels M/Sec2	Air Cons. (CFM)	Rec. Hose Size (in.)	Air Inlet (in.) BSP
AC809-5	60	81	1/2	350	10	1.31	314,96	2.3	4	3/8	1/4	1/4
AC810	50	68	3/8	350	550	1.31	0.64	160,00	4	4	3/8	1/4
AC811	35	48	1/4	350	240	1.31	0.85	247,00	4	4	3/8	1/4

RATCHET & IMPACT WRENCH ACCESSORIES

SHORT SOCKET

3/8" DRIVE METRIC

8mm	SM3808SD	24mm	SM3424SD
9mm	SM3809SD	26mm	SM3426SD
10mm	SM3810SD	27mm	SM3427SD
11mm	SM3811SD	28mm	SM3428SD
12mm	SM3812SD	29mm	SM3429SD
13mm	SM3813SD	30mm	SM3430SD
14mm	SM3814SD	32mm	SM3432SD
15mm	SM3815SD	33mm	SM3433SD

1/2" DRIVE METRIC

10mm	SM1210SD		
11mm	SM1211SD		
12mm	SM1212SD		
13mm	SM1213SD		
14mm	SM1214SD	27mm	SM127SD
15mm	SM1215SD	28mm	SM128SD
16mm	SM1216SD	29mm	SM129SD
17mm	SM1217SD	30mm	SM130SD
18mm	SM1218SD	32mm	SM132SD
19mm	SM1219SD	33mm	SM133SD
20mm	SM1220SD	34mm	SM134SD
21mm	SM1221SD	35mm	SM135SD
22mm	SM1222SD	36mm	SM136SD
23mm	SM1223SD	37mm	SM137SD
24mm	SM1224SD	38mm	SM138SD
25mm	SM1225SD	41mm	SM141SD
26mm	SM1226SD	46mm	SM146SD
27mm	SM1227SD		

1" DRIVE METRIC

27mm	SM127SD
28mm	SM128SD
29mm	SM129SD
30mm	SM130SD
32mm	SM132SD
33mm	SM133SD
34mm	SM134SD
35mm	SM135SD
36mm	SM136SD
37mm	SM137SD
38mm	SM138SD
41mm	SM141SD
46mm	SM146SD

DEEP SOCKET

3/8" DRIVE METRIC

8mm	SM3808DD	24mm	SM3424DD
9mm	SM3809DD	26mm	SM3426DD
10mm	SM3810DD	27mm	SM3427DD
11mm	SM3811DD	28mm	SM3428DD
12mm	SM3812DD	29mm	SM3429DD
13mm	SM3813DD	30mm	SM3430DD
14mm	SM3814DD	32mm	SM3432DD
15mm	SM3815DD	33mm	SM3433DD

1/2" DRIVE METRIC

10mm	SM1210DD		
11mm	SM1211DD		
12mm	SM1212DD		
13mm	SM1213DD		
14mm	SM1214DD	27mm	SM127DD
15mm	SM1215DD	28mm	SM128DD
16mm	SM1216DD	29mm	SM129DD
17mm	SM1217DD	30mm	SM130DD
18mm	SM1218DD	32mm	SM132DD
19mm	SM1219DD	33mm	SM133DD
20mm	SM1220DD	34mm	SM134DD
21mm	SM1221DD	35mm	SM135DD
22mm	SM1222DD	36mm	SM136DD
23mm	SM1223DD	37mm	SM137DD
24mm	SM1224DD	38mm	SM138DD
25mm	SM1225DD	41mm	SM141DD
26mm	SM1226DD	46mm	SM146DD
27mm	SM1227DD		

1" DRIVE METRIC

27mm	SM127DD
28mm	SM128DD
29mm	SM129DD
30mm	SM130DD
32mm	SM132DD
33mm	SM133DD
34mm	SM134DD
35mm	SM135DD
36mm	SM136DD
37mm	SM137DD
38mm	SM138DD
41mm	SM141DD
46mm	SM146DD

SOCKET SETS

H0082

1/2" Drive
Metric Socket Set



11
PIECE

Socket sizes
12, 13, 14, 15, 16,
17, 18, 19, 21, 22,
24 mm

H0082-MM

1/2" Dr. Deep
Impact Set



11
PIECE

Socket sizes
12, 13, 14, 15, 16,
17, 18, 19, 21, 22,
24 mm

H0086-1

3/4" Drive Metric
Socket Set



8
PIECE

Socket sizes 24,
27, 29,
30, 32, 33,
36, 38mm

H0093-1

1" Dr Metric
Socket Set 4pcs



8
PIECE

Socket sizes 24,
27, 29,
30, 32, 33,
36, 38mm

H0095

1" Dr Metric
Socket Set



4
PIECE

Socket sizes 27,
30,
32, 33mm

3/8" & 1/2" SINGLE DEPTH SOCKETS



3/4" & 1" DOUBLE DEPTH SOCKETS



ADAPTORS



3/8" female to 1/2" male
1/2" female to 3/8" male
1/2" female to 3/4" male
3/4" female to 1/2" male
3/4" female to 1" male
1" female to 3/4" male
1 1/2" female to 1" male

Part No.
SA38F12M
SA12F38M
SA12F34M
SA34F12M
SA34F1M
SA1F34M
SA112F1M

UNIVERSAL JOINTS



3/8" square drive
1/2" square drive
3/4" square drive
1" square drive

Part No.
UJ38
UJ12
UJ34
UJ1

BOOTS



1056-XL-BB	Boot for AIRCAT 1056/1076
1150-BB	AC1150 Rubber Boot
1250-KBR	AC1250-K Rubber Boot
1355-XLBR	Boot for AIRCAT 1355
1450-BB	Boot for AIRCAT 1450 USE 1150-BB
1600-THBR	Boot for AIRCAT 1600
1058-VXLBB	Boot for AIRCAT AC1058-VXL
1059-VXLBB	Boot for AIRCAT AC1059-VXL
1178-VXLBB	Boot for AIRCAT AC1178-VXL
1778-VXLBB	Boot for AIRCAT AC1778-VXL

EXTENSION BARS



	3"	6"	8"	10"	12"
3/8" square drive	EX383	EX386			
1/2" square drive	EX123	EX126		EX1210	EX1212
3/4" square drive		EX346	EX348	EX3410	EX3412
1" square drive		EX16	EX18	EX110	EX112

GRINDERS AND CUT-OFF TOOLS

AIRCAT® Die Grinders and Cut-off tools offer patented internal silencing and comfort. The AIRCAT® trigger is ergonomically designed, providing an easier push and pull than other brands. For precision, AIRCAT® features low service run-out and long life.



AIRCAT®

AC6200 | COMPOSITE STRAIGHT MINI DIE GRINDER



- PATENTED QUIET TUNED EXHAUST (82 DBA);
- SUPERIOR STEEL GRADE INTERNAL BEARINGS FOR LONGER LIFE;
- FEATHER TRIGGER FOR BETTER SPEED CONTROL;
- ERGONOMICALLY DESIGNED HOUSING;
- MOST COMFORTABLE TRIGGER IN THE INDUSTRY

AC6201 | COMPOSITE STRAIGHT DIE GRINDER



- PATENTED QUIET TUNED EXHAUST (82 DBA);
- SUPERIOR STEEL GRADE INTERNAL BEARINGS FOR LONGER LIFE;
- FEATHER TRIGGER FOR BETTER SPEED CONTROL;
- ERGONOMICALLY DESIGNED HOUSING;
- MOST COMFORTABLE TRIGGER IN THE INDUSTRY

AC6210 | COMPOSITE STRAIGHT DIE GRINDER EXTENDED SHANK



- PATENTED QUIET TUNED EXHAUST (82 DBA);
- SUPERIOR STEEL GRADE INTERNAL BEARINGS FOR LONGER LIFE;
- FEATHER TRIGGER FOR BETTER SPEED CONTROL;
- ERGONOMICALLY DESIGNED HOUSING;
- EXTENDED HEAD TO REACH IN TIGHT SPOTS;
- MOST COMFORTABLE TRIGGER IN THE INDUSTRY;

AC6255 | COMPOSITE ANGLE DIE GRINDER



- SUPERIOR STEEL GRADE INTERNAL BEVEL GEARS FOR LONGER LIFE;
- FEATHER TRIGGER FOR BETTER SPEED CONTROL;
- PATENTED QUIET TECHNOLOGY (82 DBA);
- EXCELLENT FOR HIGH SPEED BLENDING, SMOOTHING, PORTING AND DEBURRING IN CONFINED AREAS;
- ERGONOMICALLY DESIGNED HOUSING;
- MOST COMFORTABLE TRIGGER IN THE INDUSTRY;

SPECIFICATIONS

Model No.	Free Speed (RPM)	Motor (HP)	Collet Size (mm)	Gears	Exhaust	Weight (kg)	Length (mm)	Vibration Levels M/Sec2	Air Cons. (CFM)	Rec. Hose Size (in.)	Air Inlet (in.) BSP
AC6200	20,000	0.40	6	Direct Drive	Rear	0.40	165.10	2.9	4	3/8	1/4
AC6201	22,000	0.50	6	Direct Drive	Rear	0.49	215.90	3.1	6	3/8	1/4
AC6210	20,000	0.50	6	Direct Drive	Rear	1.13	342.90	3.1	6	3/8	1/4
AC6255	20,000	0.50	6	Spiral-Bevel	Rear	0.49	177.80	2.5	6	3/8	1/4

AC6260 | COMPOSITE 1.0 HP STRAIGHT DIE GRINDER



- FULL 1.0 HP NON-STALL MOTOR;
- PATENTED QUIET TUNED EXHAUST (82 DBA);
- SUPERIOR STEEL GRADE INTERNAL BEARINGS FOR LONGER LIFE;
- FEATHER TRIGGER FOR BETTER SPEED CONTROL;
- ERGONOMICALLY DESIGNED HOUSING;
- MOST COMFORTABLE TRIGGER IN THE INDUSTRY;

AC6265 | 6MM ANGLED 1.0 HP COMPOSITE DIE GRINDER



- FULL 1.0 HP NON-STALL MOTOR;
- PATENTED QUIET TUNED EXHAUST (82 DBA);
- SUPERIOR STEEL GRADE INTERNAL BEARINGS FOR LONGER LIFE;
- FEATHER TRIGGER FOR BETTER SPEED CONTROL;
- ERGONOMICALLY DESIGNED HOUSING;
- MOST COMFORTABLE TRIGGER IN THE INDUSTRY;

AC6270 | 6MM EXTENDED STRAIGHT 1 HP COMPOSITE DIE GRINDER



- 20,000 RPM
- 1.0 HP NON STALL MOTOR
- PATENTED "SILENCING TECHNOLOGY" REDUCES NOISE TO (80 DBA)
- 6" EXTENSION TO REACH TIGHT AREAS
- ERGONOMICALLY DESIGNED HOUSING
- MOST COMFORTABLE TRIGGER IN THE INDUSTRY

AC6280 | .75 HP ANGLE DIE GRINDER WITH SPINDLE LOCK



- 18,000 RPM;
- .75 HP NON STALL MOTOR;
- SPINDLE LOCK FEATURE FOR EASY ACCESSORY CHANGE;
- SPEED CONTROL SWITCH LOCATED AT THE TOP OF THE GRIP FOR ADDED CONTROL;
- ERICKSON® STYLE PRECISION COLLET;
- COMPOSITE HANDLE AND GRIP FOR COMFORT;
- LOW NOISE ONLY 79 DBA;

SPECIFICATIONS

Model No.	Free Speed (RPM)	Motor (HP)	Collet Size (mm)	Gears	Exhaust	Weight (kg)	Length (mm)	Vibration Levels M/Sec2	Air Cons. (CFM)	Rec. Hose Size (in.)	Air Inlet (in.) BSP
AC6260	22,000	1.0	6	Direct Drive	Rear	0.54	234.95	2.3	8	3/8	1/4
AC6265	18,000	1.0	6	Bevel Gears	Rear	0.95	241.30	2.9	4.2	3/8	1/4
AC6270	20,000	1.0	6	Direct Drive	Rear	1.18	359.41	2.5	4.2	3/8	1/4
AC6280	20,000	0.75	6	Direct Drive	Rear	0.82	117.8	2.5	4	3/8	1/4

AC6285 | .75 HP STRAIGHT DIE GRINDER WITH SPINDLE LOCK



- 20,000 RPM;
- .75 HP NON STALL MOTOR;
- SPINDLE LOCK FEATURE FOR EASY ACCESSORY CHANGE;
- SPEED CONTROL SWITCH LOCATED ON TOP OF THE GRIP FOR ADDED CONTROL;
- ERICKSON® STYLE PRECISION COLLET;
- OVER-MOLD COMPOSITE HANDLE AND GRIP FOR COMFORT;
- LOW NOISE ONLY 79 DBA;
- LOW VIBRATION ONLY 2.5 M/SEC²;

AC6290 | .75 HP REVERSIBLE STRAIGHT DIE GRINDER



- 20,000 RPM;
- .75 HP NON STALL MOTOR;
- SPEED CONTROL SWITCH LOCATED UNDER THE TRIGGER FOR ADDED CONTROL;
- FORWARD/REVERSE SWITCH LOCATED ON TOP OF THE GRIP FOR EASY DIRECTIONAL CHANGES;
- ERICKSON® STYLE PRECISION COLLET;
- OVER-MOLD COMPOSITE HANDLE AND GRIP FOR COMFORT;
- LOW NOISE ONLY 79 DBA;
- LOW VIBRATION ONLY 2.5 M/SEC²;

AC6295 | 115° ANGLE DIE GRINDER



- .6 HP MOTOR
- 18,000 RPM
- SPINDLE LOCK FEATURE FOR EASY ACCESSORY CHANGE
- ERGONOMIC COMPOSITE OVER MOLD GRIP PROVIDES COMFORT
- SPEED CONTROL SWITCH LOCATED AT THE TOP OF THE TOOL FOR ADDED CONTROL
- REAR EXHAUST

SPECIFICATIONS

Model No.	Free Speed (RPM)	Motor (HP)	Collet Size (mm)	Gears	Exhaust	Weight (kg)	Length (mm)	Vibration Levels M/Sec ²	Air Cons. (CFM)	Rec. Hose Size (in.)	Air Inlet (in.) BSP
AC6285	22,000	0.75	6	Direct Drive	Rear	0.64	117.8	2.5	4	3/8	1/4
AC 6290	22,000	0.75	6	Direct Drive	Rear	0.64	177.8	2.5	6	3/8	1/4

Model No.	Free Speed (RPM)	Motor (HP)	Wheel Size (in)	Gears	Cutting Capacity	Exhaust	Weight (kg)	Length (mm)	Vibration Levels M/Sec ²	Air Cons. (CFM)	Rec. Hose Size (in.)	Air Inlet (in.) BSP
AC6295	18,000	0.6	5	Bevel	3/4" Rolled Steel / 18 Gauge	Rear	0.75	198.00	12.7	6	3/8	1/4

AC6275-IND | 4" | COMPOSITE INSIDE CUT-OFF TOOL



- EXTENDED LENGTH FOR BETTER REACH. GET IN WHERE OTHER TOOLS FAIL TO GO!;
- COMPACT TAPERED GEAR HOUSING WITH CLOSE-COUPLED GRINDING WHEEL;
- REACHES INSIDE CORNERS OF AS LITTLE AS 30 DEGREES WITH 4" WHEEL;
- SUPERIOR STEEL GRADE INTERNAL GEARS FOR LONGER LIFE;
- NEW 1.0 HP MOTOR ELIMINATES "STALL" AND INCREASES RELIABILITY;
- NEW SPINDLE LOCK FOR EASE OF WHEEL CHANGE;
- NEW 11 POSITION ROTATIONAL GUARD;
- GRINDER DISC SIZES: 4" (1/16 X 3/8) (1/8 X 3/8);

AC6340 | 4-1/2" ANGLED COMPOSITE GRINDER



- 11,000 RPM, 5/8"-11 SPINDLE
- NEW 1.0 HP MOTOR ELIMINATES "STALL" AND INCREASES RELIABILITY
- SPINDLE LOCK FOR EASE OF WHEEL CHANGE
- MULTI POSITIONAL ROTATIONAL GUARD IMPROVES ACCESS
- HI-LOW SPEED ADJUSTMENT CONTROL
- THE COMPOSITE GRIP AND THROTTLE TRIGGER HAVE BEEN ERGONOMICAL-
LY DESIGNED TO PROVIDE UNMATCHED COMFORT FOR THE USER
- ROTATIONAL MUFFLER MOUNTED AT REAR EXHAUST

AC6520 | 3/8" | COMPOSITE REVERSIBLE CUT-OFF TOOL



- ADJUSTING ROTATIONAL DIRECTION INCREASES CUTTING WHEEL LIFE AND
ALLOWS OPERATOR TO CHANGE THE DIRECTION OF SPARKS;
- REVERSE SWITCH LOCATED IN GRIP FOR EASY CHANGE OF DIRECTION;
- CUTS 3/8" ROLLED STEEL OR 18 STEEL SHEET;
- SPEED REGULATOR LOCATED UNDER THROTTLE LEVER ADDS CONTROL;
- IMPACT RESISTANT, COMPOSITE HOUSING;
- EXTRA HEAVY DUTY DUAL SPINDLE BEARINGS FOR ADDED RELIABILITY;
- SPEED CONTROL SWITCH LOCATED ON TOP OF THE HOUSING FOR ADDED
CONTROL;

SPECIFICATIONS

Model No.	Free Speed (RPM)	Motor (HP)	Wheel Size (in)	Gears	Cutting Capacity	Exhaust	Weight (kg)	Length (mm)	Vibration Levels M/ Sec2	Air Cons. (CFM)	Rec. Hose Size (in.)	Air Inlet (in.) BSP
AC6275-A	14,000	1.0	5	Spiral Bevel	3/4" Rolled Steel / 18 Gauge	Rear	1.70	393.70	3.8	6	3/8	1/4
AC6340	20,000	1.0	3	Spindle Drive	4-1/2" Rolled Steel / 18 Gauge	Rear	1.09	222.25	1.8	6	3/8	1/4
AC6520	18,000	0.50	3	Direct Drive	3/4" Rolled Steel / 18 Gauge	Rear	0.72	177.80	1.8	4	3/8	1/4

AC6530 | FLEX HEAD CUT OFF TOOL



- 18,000 RPM FREE SPEED
- 0.5 HP MOTOR
- 3 POSITION FLEX HEAD
- CUTS 3/8" ROLLED STEEL OR 18 GAUGE STEEL SHEET
- 360° ROTATIONAL GUARD AND EXHAUST
- PATENTED MUFFLER DESIGN REDUCES NOISE LEVEL TO 90 DBA



3 Position Flex Head

AC6560 | 4" 1 HP COMPOSITE CUT OFF TOOL



- 1.0 HP NON STALL MOTOR
- 14000 RPM
- SINGLE REDUCTION GEAR INCREASES TORQUE AND STALL RESISTANCE
- COMPOSITE HANDLE AND GRIP FOR COMFORT
- LOW NOISE ONLY 89 DBA
- LOW VIBRATION ONLY <2.5>M/SEC2

SPECIFICATIONS

Model No.	Free Speed (RPM)	Motor (HP)	Wheel Size (in)	Gears	Cutting Capacity	Exhaust	Weight (kg)	Length (mm)	Vibration Levels M/ Sec2	Air Cons. (CFM)	Rec. Hose Size (in.)	Air Inlet (in.) BSP
AC6530	18,000	0.5	3	Direct Drive	3/4" Rolled Steel / 18 Gauge	Rear	2.6	8.8	1.9	6	3/8	1/4
AC6560	14,000	1.0	4	Single Reduction	3/4" Rolled Steel / 18 Gauge	Rear	1	241.30	1.8	4.2	3/8	1/4

GRINDER / CUT-OFF TOOL ACCESSORIES



BELTS



BRISTLE DISCS



SANDING DISCS



BACKING PADS



SURFACE CONDITIONING DISCS

SANDING DISC (1-1/2")

PART NUMBER	DESCRIPTION
131403-120	120 Sanding Disc (1-1/2") pkt of 10
131403-320	320 Sanding Disc (1-1/2") pkt of 10
131403-600	600 Sanding Disc (1-1/2") pkt of 10
13132-600	600 Sanding Disc (1-1/4") pkt of 10

SANDING DISC (1-1/4")

PART NUMBER	DESCRIPTION
131403-120	120 Sanding Disc (1-1/4") pkt of 10
131403-180	180 Sanding Disc (1-1/4") pkt of 10
131403-320	320 Sanding Disc (1-1/4") pkt of 10
13132-600	600 Sanding Disc (1-1/4") pkt of 10

SANDING DISC (2")

PART NUMBER	DESCRIPTION
HO-P120	120 Grit Sand Disc 2"
HO-P24	24 Grit Sand Disc 2"
HO-P24 - 3	24-3 Grit Sand Disc 2"
HO-P36	36 Grit Sand Disc 2"
HO-P60	60 Grit Sand Disc 2"
HO-P80	80 Grit Sand Disc 2"
HO-P80-3	80-3 Grit Sand Disc 2"
HO-P120-3	120-3 Grit Sand Disc 2"

BELT SANDERS

PART NUMBER	DESCRIPTION
8704 +GRIT	30mm Sander belts - Grit size 40, 50, 60, 80, 100, 120 and 150
8764, 5764 +GRIT	10mm Sander belts - Grit size 40, 50, 60, 80, 100, 120 and 150
8765, 5765 +GRIT	20mm Sander belts - Grit size 40, 50, 60, 80, 100, 120 and 150
5765 +GRIT	60mm Sander belts - Grit size 40, 60, 80, 100, 120 and 150

SISAL/SURF

H0107	Sisal Polish Mop
H0SCF	2" Blue Surf. Cond. Disc Fine

OTHER COLLETS

RL80528G	8mm Collet
732227	6mm Collet
732224	3mm Collet
92232	1/8" Collet
92253	1/4" Collet



ERICKSON COLLETS

5725-15D	8mm Erickson Collet
5725-15	6mm Erickson Collet
5725-15C	3mm Erickson Collet
5725-15A	1/4" Erickson Collet



WOOL POLISHING

131210-1	2" Wool Polishing Bonnet
H0067	7" Lambs Wool Bonnet
H0068	8" Lambs Wool Bonnet



CUTTING DISCS

5L-3011B39N	4" CUTTING DISC
H0069N	3" CUTTING DISC



3M ROLOC

20004	50 Grit Roloc Bristle Disc Green
20005	80 Grit Roloc Bristle Disc Yellow
20006	120 Grit Roloc Bristle Disc White

DUST COLLECTOR / HOLDER

PT201	Dust Collector
0308C025	2" Disc Holder/Backing Pad

SCRAPING BLADE

13122	Scraping Blade 35mm
13123	Scraping Blade 45mm

DRILLS

AIRCAT® drills feature precision, fully caged planetary gears, and trigger mounted reverse switches for instant change of direction. The AIRCAT® ergonomic grip designs provide perfect balance and added operator comfort.



AC4337 | 3/8" | ANGLE DRILL - CHUCK & KEY



- 0.75 HP MOTOR ;
- PRECISION SPIRAL BEVEL GEARS INCREASE RELIABILITY;
- CONVENIENTLY POSITIONED FORWARD/REVERSE KNOB;
- BUILT-IN SPEED REGULATOR FOR ADDED CONTROL;
- ERGONOMICALLY DESIGNED COMPOSITE OVER-MOLD GRIP AND THROTTLE LEVER PROVIDE UNMATCHED COMFORT FOR THE USER;
- FITTED WITH GREASE NIPPLE FOR GEAR LUBRICATION;
- INTERNAL SILENCING REDUCES NOISE LEVEL TO 75 DBA;
- REAR EXHAUST DIRECTS AIR AWAY FROM WORK AREA;
- FITTED WITH KEYED CHUCK;

AC4338 | 3/8" | CHUCK & KEY OR KEYLESS CHUCK OPTION.



- 3/8" REVERSIBLE COMPOSITE DRILL;
- JACOBS® CHUCK (KEYLESS);
- FEATHER TRIGGER FOR BETTER SPEED CONTROL;
- TRIGGER MOUNTED REVERSE FOR INSTANT CHANGE OF DIRECTION;
- 1,800 RPM;
- SUPERIOR GRADE STEEL PLANETARY GEAR FOR LONGER LIFE;
- PATENTED QUIET TUNED EXHAUST (85 DBA);
- PATENTED ERGONOMICALLY DESIGNED HANDLE;
- AIR FLOW PRESSURE: 90 PSI;

SPECIFICATIONS

Model No.	Free Speed (RPM)	Motor (HP)	Chuck Size (in.)	Gears	Spindle Thread Size (in.)	Weight (kg)	Length (mm)	Vibration Levels M/ Sec2	Air Cons. (CFM)	Rec. Hose Size (in.)	Air Inlet (in.) BSP
AC4337	1,600	0.75	3/8	Spiral Bevel	1.08	210.82	2.1	6	3/8	1/4	1/4
AC4338	1,800	0.70	3/8	Planetary	3/8 x 24	1.13	177.80	1.7	6	3/8	1/4

AC4450 | 1/2" | COMPOSITE DRILL - KEYED CHUCK



- 1/2" REVERSIBLE COMPOSITE DRILL;
- KEYED CHUCK;
- FEATHER TRIGGER FOR BETTER SPEED CONTROL;
- TRIGGER MOUNTED REVERSE FOR INSTANT CHANGE OF DIRECTION;
- SUPERIOR GRADE STEEL PLANETARY GEAR FOR LONGER LIFE
- 400 RPM;
- PATENTED QUIET TUNED EXHAUST (85 DBA);
- PATENTED ERGONOMICALLY DESIGNED HANDLE;
- AIR FLOW PRESSURE: 90 PSI;

AC4451 | 1/2" | COMPOSITE DRILL - CHUCK & KEY OR KEYLESS CHUCK OPTION.



- 0.70 HP MOTOR;
- LOW WEIGHT COMPOSITE HOUSING REDUCES WEIGHT;
- PATENTED ONE-CLICK REVERSE BUTTON PROVIDES INSTANT CHANGE OF DIRECTION;
- PATENTED "SILENCING TECHNOLOGY" REDUCES THE NOISE LEVEL TO 83 DBA;
- PATENTED GRIP HAS BEEN ERGONOMICALLY DESIGNED TO PERFECTLY FIT THE HAND PROVIDING UNMATCHED COMFORT FOR THE USER;
- FORWARD POSITION HANDLE ALLOWS OPERATOR TO APPLY INCREASED FEED FORCE;
- FORWARD POSITION HANDLE ALLOWS MORE CONTROL FOR DRILLING PILOT HOLE AND MORE CONTROL TO MAINTAIN THE DRILLED HOLE AXIS;

SPECIFICATIONS

Model No.	Free Speed (BPM)	Motor (HP)	Chuck Size (in)	Gears	Weight (kg)	Length (mm)	Vibration Levels M/Sec ²	Air Cons. (CFM)	Rec. Hose Size (in.)	Air Inlet (in.) BSP
AC4450	400	0.70	1/2	Planetary	1.36	203.25	1.0	6	3/8	1/4
AC4451	400	0.70	1/2	Caged Planetary	1.86	235.45	2.5	9	3/8	1/4



3/8" CHUCK & KEY



3/8" KEYLESS



1/2" CHUCK & KEY



1/2" KEYLESS

DRILL CHUCKS 3/8"

PART NUMBER	DRILL CHUCKS
H0019	3/8" Chuck & Key
H0019K	3/8" Keyless Chuck
H0023	3/8" Chuck Key

DRILL CHUCKS 1/2"

PART NUMBER	DRILL CHUCKS
H0020	1/2" Chuck & Key
H0020K	1/2" Keyless Chuck
H0024	1/2" Chuck Key

DRILL CHUCKS 5/8"

PART NUMBER	DRILL CHUCKS
H0122	5/8" Tapered Chuck & Key for HP17RD

DRILL CHUCKS 1/4"

PART NUMBER	DRILL CHUCKS
99005	1/4" Hex Slip Shank

HAMMERS

AIRCAT® hammers feature a multi-patented silencing system and internal vibration damping that reduce vibration levels to 4.2 m/sec². The AIRCAT® ergonomic grip featured in the hammers provide perfect balance and added operator comfort.



AC5100-A-T | .401 SHANK COMPOSITE MEDIUM STROKE AIR HAMMER



- 3,000 BLOWS PER MINUTE FOR FAST CUTTING ACTION;
- HIGH PERFORMANCE AND LOW WEIGHT;
- MULTI-PATENTED MUFFLER/EXHAUST SYSTEM GIVES THIS TOOL AND EXTREMELY LOW NOISE OF 88 DBA AND VIBRATION LEVEL OF 4.2 M/ SEC²;
- HIGH QUALITY SAFETY-LOCK RETAINER FOR EASE OF CHISEL CHANGE AND ADDED SAFETY;

AC5100-A | .401 SHANK COMPOSITE MEDIUM STROKE AIR HAMMER KIT



- 3,000 BLOWS PER MINUTE FOR FAST CUTTING ACTION;
- HIGH PERFORMANCE AND LOW WEIGHT;
- MULTI-PATENTED MUFFLER/EXHAUST SYSTEM GIVES THIS TOOL AND EXTREMELY LOW NOISE OF 88 DBA AND VIBRATION LEVEL OF 4.2 M/ SEC²;
- HIGH QUALITY SAFETY-LOCK RETAINER FOR EASE OF CHISEL CHANGE AND ADDED SAFETY;
- MODEL 5100-A INCLUDES: BLOW MOLD KIT, 5 PC. CHISEL SET AND QUICK CHANGE RETAINER;

SPECIFICATIONS

Model No.	Free Speed (BPM)	Pistol Stroke	Shank Opening	Retainer	Valve	Weight (kg)	Length (mm)	Vibration Levels M/ Sec2	Air Cons. (CFM)	Rec. Hose Size (in.)	Air Inlet (in.) BSP
AC5100-A-T	3,000	2-5/8	.401"	Safety-lock	Plate	1.49	193.04	4.2	6	3/8	1/4
AC5100-A	3,000	2-5/8	.401"	Safety-lock	Plate	1.49	193.04	4.2	6	3/8	1/4

AC5200-A-T | .401 SHANK COMPOSITE LONG STROKE AIR HAMMER



- 2100 BLOWS/MINUTE PROVIDE HARD HITTING CUTTING ACTION
- 3-3/4" PISTON STROKE
- VIBRATION DAMPED TECHNOLOGY REDUCES THE VIBRATION LEVEL TO 4.2 M/SEC²
- PATENTED AIRCAT DESIGN DOUBLE INJECTION COMPOSITE GRIP HAS BEEN ERGONOMICALLY DESIGNED TO PROVIDE UNMATCHED COMFORT FOR THE USER
- PATENTED AIRCAT SILENCING TECHNOLOGY
- HEAVY DUTY BALL-LOCK QUICK CHANGE CHISEL RETAINER ADDS SAFETY AND RELIABILITY

AC5200-A | .401 SHANK COMPOSITE LONG STROKE AIR HAMMER KIT



- 2100 BLOWS/MINUTE PROVIDE HARD HITTING CUTTING ACTION
- 3-3/4" PISTON STROKE
- VIBRATION DAMPED TECHNOLOGY REDUCES THE VIBRATION LEVEL TO 4.2 M/SEC²
- PATENTED AIRCAT DESIGN DOUBLE INJECTION COMPOSITE GRIP HAS BEEN ERGONOMICALLY DESIGNED TO PROVIDE UNMATCHED COMFORT FOR THE USER
- PATENTED AIRCAT SILENCING TECHNOLOGY
- HEAVY DUTY BALL-LOCK QUICK CHANGE CHISEL RETAINER ADDS SAFETY AND RELIABILITY
- MODEL AC5200-A INCLUDES: 4 PC. CHISEL SET / 902 | 907 | 909 | 910

SPECIFICATIONS

Model No.	Free Speed (BPM)	Pistol Stroke	Shank Opening	Retainer	Valve	Weight (kg)	Length (mm)	Vibration Levels M/Sec2	Air Cons. (CFM)	Rec. Hose Size (in.)	Air Inlet (in.) BSP
AC5200-A-T	2,100	3-3/4	.401"	Safety-lock	Plate	1.99	279.40	4.2	6	3/8	1/4
AC5200-A	2,100	3-3/4	.401"	Safety-lock	Plate	1.99	279.40	4.2	6	3/8	1/4

AC5250 | 0.401" SUPER DUTY AIR HAMMER

- 2,500 BPM
- 3" Piston stroke
- Includes Quick change chisel retainer
- Variable speed trigger
- 4 position built-in air regulator



SPECIFICATIONS

Model No.	Free Speed (BPM)	Pistol Stroke	Shank Opening	Retainer	Valve	Weight (kg)	Length (mm)	Vibration Levels M/ Sec2	Air Cons. (CFM)	Rec. Hose Size (in.)	Air Inlet (in.) BSP
AC5250A-T	2,500	3	.401"	Quick Change	Plate	2.44	241,30	7.7	4.2	3/8	1/4

AC5300-A-T | SUPER DUTY 0.498" SHANK AIR HAMMER



- 0.498" SHANK OPENING
- 1760 BLOWS / MINUTE
- HEAVY DUTY "QUICK CHANGE CHISEL RETAINER" PREVENTS CHISELS BY-PASSING CONVENTIONAL SPRING RETAINERS
- PATENTED AIRCAT ERGONOMICALLY DESIGNED GRIP PROVIDES UNMATCHED COMFORT FOR THE USER
- DESIGNED FOR ULTRA HEAVY DUTY AND FOR DRIVING OUT SHACKLE AND KINGPINS AND CUTTING LARGE BOLTS, NUTS AND FASTENERS;

AC5300-A | SUPER DUTY 0.498" SHANK AIR HAMMER KIT



- 0.498" SHANK OPENING
- 1760 BLOWS / MINUTE
- HEAVY DUTY "QUICK CHANGE CHISEL RETAINER" PREVENTS CHISELS BY-PASSING CONVENTIONAL SPRING RETAINERS
- PATENTED AIRCAT ERGONOMICALLY DESIGNED GRIP PROVIDES UNMATCHED COMFORT FOR THE USER
- DESIGNED FOR ULTRA HEAVY DUTY AND FOR DRIVING OUT SHACKLE AND KINGPINS AND CUTTING LARGE BOLTS, NUTS AND FASTENERS
- MODEL AC5300-A INCLUDES: 4 PC. CHISEL SET / 902 | 907 | 909 | 910

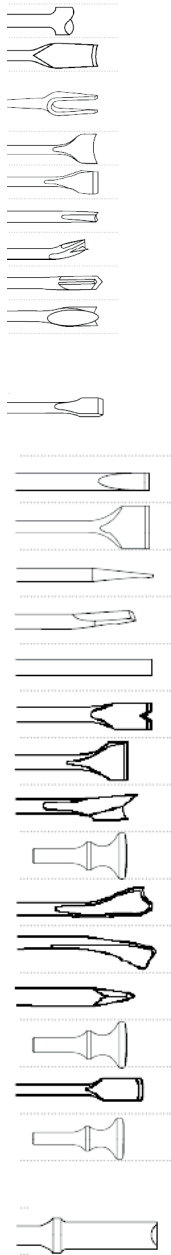
SPECIFICATIONS

Model No.	Free Speed (BPM)	Pistol Stroke	Shank Opening	Retainer	Valve	Weight (kg)	Length (mm)	Vibration Levels M/ Sec2	Air Cons. (CFM)	Rec. Hose Size (in.)	Air Inlet (in.) BSP
AC5300-A-T	1,760	2-11/16	.498"	Quick Change	Plate	2.08	227.07	17.4	6	3/8	1/4
AC5300-A	1,760	2-11/16	.401"	Quick Change	Plate	2.08	227.07	17.4	6	3/8	1/4

HAMMERS ACCESSORIES

0.401" ROUND SHANK

PART NO	ROUND SHANK
901	0.401" Shank Tie Rod Tool
902	Weld Splitter
903-3/4	Fork Chisel 3/4"
904	Bushing Remover
905	Wide Scraper
906	Bushing Splitter
907	Claw Ripper
908	Muffler Cutter
909	Panel Cutter
910	Flat Chisel 7x3/4
910-1/2	Flat Chisel 7x1/2
910-11/2	Flat Chisel 7x1 1/2"
910-11	Flat Chisel 11x3/4
910-18	Flat Chisel 18x3/4
911	Tapered Punch
912	Rivet Cutter
913	Blank
914	Vee Chisel
H0096	1" Smoothing Hammer
H0097	1 3/4" Smoothing Hammer
922	Spoon Chisel
923	Single Edge Cutter
933	Muffler Cutter (inside)
934	Muffler Cutter (outside)
940	Moil Point
951	Five Chisel Pack (902, 907, 910, 909, 912)
H0085	3/16" Round Rivet Snap
1604	1/4" Round Rivet Snap
1605	5/16" Round Rivet Snap
1606	5/16" Round Rivet Snap



0.498" ROUND SHANK

PART NO	ROUND SHANK
965	Shank Tie Rod Tool
968	Fork Chisel 1 1/4
955	Wide Scraper
964	Bushing Splitter
959	Panel Cutter
960	Flat Chisel 7x3/4
960-18	Flat Chisel 18x3/4
961	Tapered Punch
962	Rivet Cutter
963	Blank
H0098	1" Smoothing Hammer

0.401" NON TURN SHANK

PART NO	NO TURN SHANK
3114	Weld Splitter
3106	Wide Scraper
3105	Claw Ripper
3109	Panel Cutter
3102	Flat Chisel 7x3/4
3102-12	Flat Chisel 11x3/4
3102-18	Flat Chisel 18x3/4
3110	Tapered Punch
3103	Rivet Cutter
3101	Blank
3112	Spoon Chisel
3104	Spoon Chisel

WELD CHIPPER CHISELS - 1/2"

395	Blank Chisel 7" Long
396	3/4" Flat Chisel 7" OA
397	Wide Chisel
398	Angle Chisel
399	Scraper

3224	Diamond Chisel
3225	Round Nose Chisel
3226	Cape Chisel Weld Flux
3201	Panel Cutter

HEAVY HAMMER CHISEL	ROUND SHK 0.680	HEX SHK 0.580
BLANK CHISEL 8" LONG	301	302
FLAT CHISEL 1"X 9" LONG	303	304
MOIL POINT 9" LONG	313	314
WIDE FLAT 1 1/2" X 9" LONG	325	326
WIDE FLAT 2" X 9" LONG	323	324
CAPE CHISEL 9" LONG	305	306
ROUND NOSE CHISEL 9" LONG	307	308
DIAMOND CHISEL 9" LONG	309	310
GOUGE CHISEL 9" LONG	337	338

CHISEL RETAINERS

300	Heavy Hammer Lockring (.580 Hex) UT8644H
512	Std. Spring Retainer (.401")
512-10	Std. Spring Retainer (.401") Pack of 10
513	Std. Spring Retainer (.498")
895	Beehive Spring (.401")
898	Beehive Spring (.498")
H0035	Safety Chuck Chisel Holder (.401")
H0045B	Std. Non-Turn Retainer(.401")

AIR SAW, NIBBLER AND NEEDLE SCALERS

AIRCAT®'s latest designs and innovations add reliability and reduced noise levels and weight, while providing added operator comfort.



AC6330 | NIBBLER



- 2,600 SPM MOTOR PROVIDES FAST CUTTING ACTION IN STEEL UP TO 18 GAUGE;
- THE 6330 HAS THE SMALLEST CUT RADIUS OF ANY NIBBLER AT ONLY 7.62 CM ALLOWING CLEAN CUTS IN TIGHT CORNERS;
- THE "OVER SIZED" ANVIL AND PUNCH DRAMATICALLY INCREASES THE RELIABILITY OF THESE HIGH WEAR PARTS;
- INCLUDES AN ADDITIONAL PUNCH;
- COMPOSITE HANDLE AND THROTTLE LEVER DESIGN PROVIDE COMFORTABLE AND CONVENIENT OPERATION;

AC6350 | LOW VIBRATION AIR SAW



- 9,500 STROKE/MINUTE MOTOR PROVIDES FAST CUTTING ACTION;
- THE INTERNAL DAMPING SYSTEM REDUCES THE VIBRATION LEVEL TO 2.5M/SEC²;
- COMES COMPLETE WITH 18, 24 AND 32 TEETH POWER SAW BLADES;
- THE METAL BLADE RETAINER INCREASES RELIABILITY;
- THE ROTATIONAL 360° REAR EXHAUST MUFFLER ALLOWS EXHAUST AIR TO BE DIRECTED AS PREFERRED;
- FEATURES A SHORT OVERALL LENGTH OF ONLY 8" AND LOW A WEIGHT OF ONLY 1.13 LBS. PROVIDING GOOD WORK AREA ACCESS AND COMFORTABLE OPERATION;

AC6355 | RECIPROCATING AIR SAW



- 5,000 SPM;
- DUAL-SPEED DESIGN FOR CONTROL;
- QUICK CHANGE BLADE DESIGN RETAINER FOR QUICK AND EASY BLADE CHANGES;
- ACCEPTS VARIOUS TYPES OF RECIPROCATING SAW BLADES;
- PATENTED RECIPROCATING CRANK MECHANISM MOTOR;
- CAPABLE OF CUTTING 2.54 CM THICK STEEL AND STEEL PIPE UP TO 7.62CM
- REAR EXHAUST;

AC6390 | COMPACT NEEDLE SCALER



- 4,800 BPM;
- 1-1/4" STROKE;
- LOW WEIGHT COMPACT DESIGN;
- DURABLE STEEL HOUSING;
- BEST FOR REMOVAL OF RUST, PAINT AND SCALE ON FLAT OR IRREGULAR SURFACES;

SPECIFICATIONS

Model No.	Free Speed (RPM)	Motor (HP)	Cutting Capacity	Exhaust	Weight (kg)	Length (mm)	Vibration Levels M/Sec ²	Air Cons. (CFM)	Rec. Hose Size (in.)	Air Inlet (in.) BSP
AC6330	2600	0.50	18 Gauge	Rear	1.02	292.1	7.7	4	3/8	1/4
AC6350	9500	0.50	3/16" Steel Plate - 18 Gauge	Rear	0.51	203.20	7.7	4	3/8	1/4
AC6355	5000	0.45	1/4" thick steel and steel pipe up to 3"	Rear	1.10	309.88	7.7	3.5	3/8	1/4
AC6390	4800 (BPM)	-		Rear	1.31	292.1	-	4	3/8	1/4

NIBBLERS

PART NUMBER	NIBBLERS
RL136538	Nibbler Punch for AC6330
RL136541	Nibbler Die (Anvil) for AC6330



SAW BLADES

PART NUMBER	SAW BLADES
H0403-18	High Speed Saw Blade 18 TPI
H0403-24	High Speed Saw Blad 24 TPI
H0403-32	High Speed Saw Blade 32 TPI



TYRE BUFFERS

AIRCAT®'s latest designs and innovations add reliability and reduced noise levels and weight, while providing added operator comfort.



AC6400 | COMPOSITE HIGH SPEED TYRE BUFFER / DRILL



- 22,000 RPM;
- STALL RESISTANT 0.75 HP MOTOR;
- BUILT-IN REGULATOR FOR ADDED CONTROL ON THE JOB;
- CONVENIENT AND COMFORTABLE THROTTLE LEVER DESIGN;
- ERGONOMIC MOLDED HANDLE GRIP ADDS COMFORT AND INSULATION IN COLD WEATHER;
- COMPLETE WITH COAXIAL REAR HOSE ASSEMBLY TO ELIMINATE BLOWING OF RUBBER PARTICLES/DUST IN THE WORK AREA;
- SHORT OVERALL TOOL LENGTH OF ONLY 8" IMPROVES ACCESS IN WORK AREA;
- LOW NOISE LEVEL;
- LOW AIR CONSUMPTION;
- 3/8" PRECISION KEYED CHUCK;

AC6402 | .6 HP | 2,600 RPM | COMPOSITE TYRE BUFFER



- 2,600 RPM;
- STALL RESISTANT 0.60 HP MOTOR;
- CONVENIENT AND COMFORTABLE THROTTLE LEVER DESIGN;
- ERGONOMIC MOLDED HANDLE GRIP ADDS COMFORT AND INSULATION IN COLD WEATHER;
- COMPLETE WITH COAXIAL REAR HOSE ASSEMBLY TO ELIMINATE BLOWING OF RUBBER PARTICLES/DUST IN THE WORK AREA;
- LOW NOISE LEVEL;
- LOW AIR CONSUMPTION;
- 5/16" HEX QUICK CHANGE CHUCK WITH THREADED ARBOR FOR MOUNTING BUFFING CONES AND ACCESSORIES;

AC6403 | .6 HP | 3,600 RPM | COMPOSITE TYRE BUFFER



- 3,600 RPM;
- STALL RESISTANT 0.60 HP MOTOR;
- CONVENIENT AND COMFORTABLE THROTTLE LEVER DESIGN;
- ERGONOMIC MOLDED HANDLE GRIP ADDS COMFORT AND INSULATION IN COLD WEATHER;
- COMPLETE WITH COAXIAL REAR HOSE ASSEMBLY TO ELIMINATE BLOWING OF RUBBER PARTICLES/DUST IN THE WORK AREA;
- LOW NOISE LEVEL;
- LOW AIR CONSUMPTION;
- 5/16" HEX QUICK CHANGE CHUCK WITH THREADED ARBOR FOR MOUNTING BUFFING CONES AND ACCESSORIES;

SPECIFICATIONS

Model No.	Free Speed (RPM)	Motor (HP)	Chuck Size	Spindle Thread Size (in)	Weight (kg)	Length (mm)	Air Cons. (CFM)	Rec. Hose Size (in.)	Air Inlet (in.) BSP
AC6400	22000	0.75	3/8	3/8 X 24	0.75	203.20	4	3/8	1/4
AC6402	2600	0.60	5/16" Internal Hex	3/8 X 24	0.79	228.6	3.5	3/8	1/4
AC6403	3600	0.50	5/16" Internal Hex	3/8 X 24	0.79	228.6	4	3/8	1/4



SANDERS & POLISHERS

AIRCAT® sanders feature a patented motor design that reduces vibration to 1.8 m/sec². These motors are double sealed to eliminate any dust contamination of internal parts. AIRCAT® sanders are the first sanders with technology that allows the tools to be used lubrication free, eliminating any oil mist contamination of the work surface.

To further extend the life and reliability of the tools they also incorporate a double bearing design. AIRCAT® sanders are built using the latest technology composite grips and handles proving lower weight and added comfort for the operator.

The selection of AIRCAT® sanders are designed to meet the latest market requirements for ultra fine paint finishing and spot repair work.

AC6700 SERIES LOW VIBRATION "LUBE FREE" ORBITAL AND GEARED SANDERS



AC6700-8GCV



AC6700-6GCV



AC6700-5-336
AC6700-6-336



AC6700-5-336CV
AC6700-6-336CV



AC6700-1-332



AC6700-3-332
AC6700-3-332CV



AC6700-6-332
AC6700-6-332CV



AC6700-JBS-332

AC6700 SERIES LOW VIBRATION "LUBE FREE" ORBITAL AND GEARED SANDERS

AIRCAT® has developed a series of "lubrication free" sanders that incorporate the latest engineering concepts, advanced materials and patented designs. AIRCAT® technology reduces weight, noise & vibration, while extending the tool life. The AIRCAT® "smooth design throttle lever" and "ergonomic grip" featured in our orbital sanders provide unmatched operating comfort.

- A choice of fifteen models 2.38mm and 4.76mm orbit options
- Non vacuum, central vacuum and self vacuum options
- 1", 3", 5" 6", and 8" "hook & loop" pad options
- Only 1.6 CFM average air consumption and 6.2 CFM continuous running under load
- Advanced silencing technology reduces noise levels to 75-78 dBA
- Patented double sealed, lubrication free motor prevents dust contamination of the air motor and eliminates the need for oiling
- Orbital sanders feature the AIRCAT "smooth design" throttle lever and "ergonomic grip" providing unmatched comfort
- Patented "anti vibration" motor reduces vibration level to 1.8 m/sec²
- Low weight: Orbital sanders 0.9 kg and geared sanders 1.5 kg
- Low profile: Orbital sanders 4.3" high and geared sanders 4.5"

SPECIFICATIONS

Model No.	Description	Pad Size (in)	Orbit (mm)	Pad Type	No. Vacuum Pad Holes	Free Speed (RPM)
AC6700-1-332	Non Vac Palm Sander	1	2.5	Hook & Loop	0	8,000
AC6700-3-332	Non Vac Orbital Palm Sander/Polisher	3	2.5	Hook & Loop	6	11,000
AC6700-3-332CV	Central Vac Orbital Palm Sander/Polisher	3	2.5	Hook & Loop	6	11,000
AC6700-5-336	Non Vac Orbital Palm Sander	5	5	Hook & Loop	0	11,000
AC6700-5-336CV	Central Vac Orbital Palm Sander	5	5	Hook & Loop	6	11,000
AC6700-6-332	Non Vac Orbital Palm Sander	6	2.5	Hook & Loop	0	11,000
AC6700-6-332CV	Central Vac Orbital Palm Sander	6	2.5	Hook & Loop	6	11,000
AC6700-6-332SV	Self Vac Orbital Palm Sander	6	2.5	Hook & Loop	6	11,000
AC6700-6-336	Non Vac Orbital Palm Sander	6	5	Hook & Loop	0	11,000
AC6700-6-336CV	Central Vac Orbital Palm Sander	6	5	Hook & Loop	6	11,000
AC6700-6-336SV	Self Vac Orbital Palm Sander	6	5	Hook & Loop	6	11,000
AC6700-6GCV	Central Vac Geared Planetary Motion Sander	6	5	Hook & Loop	6	900
AC6700-8GCV	Central Vac Geared Planetary Motion Sander	8	5	Hook & Loop	8	900
AC6700-JBS-332	Jitterbug Sander	195mm x 70mm	2.5	Hook & Loop	6	900

Model No.	Weight (kg)	Length w/Pad Fitted (mm)	Width w/Pad Fitted (mm)	Height w/Pad Fitted (mm)	Noise Level d(B)A	Vibration m/sec2	Average Air Cons. (CFM)	Air Inlet BSP (in.)
AC6700-1-332	0.77	170.18	76.20	109.22	75	1.8	1.6	1/4
AC6700-3-332	0.81	139.70	76.20	109.22	75	1.8	1.6	1/4
AC6700-3-332CV	0.81	182.88	76.20	109.22	75	1.8	1.6	1/4
AC6700-5-336	0.90	170.18	127.00	109.22	75	1.8	1.6	1/4
AC6700-5-336CV	0.90	213.36	127.00	109.22	75	1.8	1.6	1/4
AC6700-6-332	0.90	172.72	152.40	109.22	75	1.8	1.6	1/4
AC6700-6-332CV	0.90	213.36	152.40	109.22	75	1.8	1.6	1/4
AC6700-6-332SV	0.90	205.74	152.40	109.22	75	1.8	1.6	1/4
AC6700-6-336	0.90	172.72	152.40	109.22	75	1.8	1.6	1/4
AC6700-6-336CV	0.90	213.36	152.40	109.22	75	1.8	1.6	1/4
AC6700-6-336SV	0.90	205.74	152.40	109.22	75	1.8	1.6	1/4
AC6700-6GCV	1.54	279.40	152.40	114.30	78	2.5	3.0	1/4
AC6700-8GCV	1.58	304.80	203.20	114.30	78	2.5	3.0	1/4
AC6700-JBS-332	1.13	195.00	70.00	105.41	80	1.8	9.0	1/4

AC6310 | 6" | DUAL ACTION SANDER



- 10,000 RPM
- 4.76 MM ORBIT
- LOW WEIGHT (1 KG) AND LOW AIR CONSUMPTION (2.5 CFM AVERAGE)
- LUBRICATION FREE AIR MOTOR WITH PATENTED DOUBLE SEALING TO PREVENT DUST CONTAMINATION
- ISOLATED MOTOR DESIGN REDUCES VIBRATION TO 1.8 M/SEC²
- INTERNAL SILENCING SYSTEM REDUCES NOISE LEVEL TO 82 DBA
- BUILT-IN THUMB OPERATED SPEED REGULATOR FOR INSTANT CONTROL
- RUBBERIZED COMFORT PALM GRIP
- LOW PROFILE ONLY 3-3/4" HIGH

AC6315 | 3" | MINI ORBITAL SANDER



- LOW WEIGHT COMPOSITE HOUSING
- TOP MOUNTED ONE-HAND FORWARD/REVERSE SWITCH
- FEATHER SPEED CONTROL TRIGGER
- INTERNAL SILENCING SYSTEM REDUCES NOISE LEVEL TO (88 DBA)
- KIT FEATURES BLOW MOLD STORAGE TRAY, PISTOL GRIP SANDER, BOTH 2" AND 3" SANDING PADS AS WELL AS AN ASSORTMENTS OF 2" AND 3" SAND PAPER

AC6315-K | 3" | MINI ORBITAL SANDER KIT



- LOW WEIGHT COMPOSITE HOUSING
- TOP MOUNTED ONE-HAND FORWARD/REVERSE SWITCH
- FEATHER SPEED CONTROL TRIGGER
- INTERNAL SILENCING SYSTEM REDUCES NOISE LEVEL TO (88 DBA)
- KIT FEATURES BLOW MOLD STORAGE TRAY, PISTOL GRIP SANDER, BOTH 2" AND 3" SANDING PADS AS WELL AS AN ASSORTMENTS OF 2" AND 3" SAND PAPER

SPECIFICATIONS

Model No.	Free Speed (RPM)	Pad / Belt Size (in.)	Spindle Thread (in.)	Gears	Exhaust	Orbit Off-set (mm)	Weight (kg)	Length (mm)	Vibration Levels M/Sec ²	Air Cons. (CFM)	Rec. Hose Size (in.)	Air Inlet (in.) BSP
AC6310	10,000	6	5/16 - 24	Direct Drive	Rear	4.76	1.0	266.70	1.8	2.5	3/8	1/4

Model No.	Free Speed (RPM)	Pad / Belt Size (in.)	Exhaust	Orbit Off-set (mm)	Weight (kg)	Length (mm)	Vibration Level (m/sec ²)	Air Cons. (CFM)	Rec. Hose Size (in.)	Air Inlet (in.) BSP
AC6315	16,000	5/16-24	N/A	N/A	0,71	132,08	3.3	2	N/A	1/4

Model No.	Free Speed (RPM)	Pad / Belt Size (in.)	Exhaust	Orbit Off-set (mm)	Weight (kg)	Length (mm)	Vibration Level (m/sec ²)	Air Cons. (CFM)	Rec. Hose Size (in.)	Air Inlet (in.) BSP
AC6315-K	16,000	5/16-24	N/A	N/A	0,71	132,08	3.3	2	N/A	1/4

AC6320 | SPOT SANDER AND POLISHER



- FEATURES INTERNAL 1/8" ORBITAL HEAD FOR ULTRA-FINE SANDING AND POLISHING
- THE COMBINED SPINDLE-COUNTER BALANCE REDUCES VIBRATION LEVELS TO 1.8 M/SEC² AND ADDS RELIABILITY
- PRECISION ALLOY STEEL SPIRAL-BEVEL GEARS EXTEND TOOL LIFE
- LAMBSWOOL AND SPONGE POLISHING BONNETS/PADS ARE ALSO AVAILABLE SEPARATELY
- THE INTERNAL SILENCING SYSTEM REDUCES NOISE LEVELS TO 78 DBA
- SUPPLIED COMPLETE WITH HOOK & LOOP 1.25" AND 2" ROUND AND A TRIANGULAR PAD SANDING DISCS FOR ALL THREE PADS TYPES ARE AVAILABLE SEPARATELY IN 120/180/320/600/1000/1500 GRIT SIZES, SANDING DISCS ARE PACKED AS 10 PC. OF EACH GRIT SIZE

AC6320-K | SPOT SANDER AND POLISHER KIT



- FEATURES INTERNAL 1/8" ORBITAL HEAD FOR ULTRA-FINE SANDING AND POLISHING
- THE COMBINED SPINDLE-COUNTER BALANCE REDUCES VIBRATION LEVELS TO 1.8 M/SEC² AND ADDS RELIABILITY
- PRECISION ALLOY STEEL SPIRAL-BEVEL GEARS EXTEND TOOL LIFE
- LAMBSWOOL AND SPONGE POLISHING BONNETS/PADS ARE ALSO AVAILABLE SEPARATELY
- THE INTERNAL SILENCING SYSTEM REDUCES NOISE LEVELS TO 78 DBA
- SUPPLIED COMPLETE WITH HOOK & LOOP 1.25" AND 2" ROUND AND A TRIANGULAR PAD SANDING DISCS FOR ALL THREE PADS TYPES ARE AVAILABLE SEPARATELY IN 120/180/320/600/1000/1500 GRIT SIZES, SANDING DISCS ARE PACKED AS 10 PC. OF EACH GRIT SIZE

AC6370 | LOW WEIGHT COMPOSITE VERTICAL POLISHER



- 3,500 RPM
- STALL RESISTANT 0.6 HP MOTOR
- VERY LOW WEIGHT ONLY 2.5 LBS.
- VERY LOW AIR CONSUMPTION ONLY 12.0 CFM
- INCORPORATES INTERNAL SPINDLE THREAD FOR FITTING OF UPHOLSTERY CLEANING BRUSHES
- COMES COMPLETE WITH 7" LAMBS WOOL POLISHING BONNET
- THE COMPOSITE HOUSING AND HANDLES HAVE BEEN ERGONOMICALLY DESIGNED TO PROVIDE UNMATCHED COMFORT FOR THE USER

SPECIFICATIONS

Model No.	Free Speed (RPM)	Pad / Bonnet Size (in.)	Spindle Thread (in.)	Orbit Off-set (mm)	Weight (kg)	Length (mm)	Vibration Levels M/Sec ²	Air Cons. (CFM)	Rec. Hose Size (in.)	Air Inlet (in.) BSP
AC6320	13,000	1 x 2	1/4	3.17	0.49	154.94	1.8	2.5	3/8	1/4
Model No.	Free Speed (RPM)	Pad / Bonnet Size (in.)	Spindle Thread (in.)	Orbit Off-set (mm)	Weight (kg)	Length (mm)	Vibration Levels M/Sec ²	Air Cons. (CFM)	Rec. Hose Size (in.)	Air Inlet (in.) BSP
AC6320-k	13,000	1 x 2	1/4	3.17	0.49	154.94	1.8	2.5	3/8	1/4
Model No.	Free Speed (RPM)	Motor (HP)	Orbit Off-set	Orbit Off-set (mm)	Weight (kg)	Length (mm)	Vibration Levels M/Sec ²	Air Cons. (CFM)	Rec. Hose Size (in.)	Air Inlet (in.) BSP
AC6370	3,500	0.6	No	3.17	1.17	170,18	1.8	12	3/8	1/4

SANDERS & POLISHERS ACCESSORIES

3" PADS

PART NO	DESCRIPTION
BT0B-38-3V0Y-W30	Velcro Backing Pad 3" no holes
BT0B-38-3V6Y-W30	Velcro Pad 3" with holes



5" PADS

PART NO	DESCRIPTION
BT0B-38-5V0Y	5" Velcro Pad no holes
BT0B-38-5V5Y	5" Velcro Pad with holes

6" PADS

PART NO	DESCRIPTION
BT0B-38-6V0Y	Velcro Pad 6" no holes
BT2HG4-49-6V15Y	6" Velcro Pad with 15 holes
UT-0B-38.2-1	Pad 6" (Six Holes) Velcro
UT-0B-38-1	Pad Velcro 6" no holes
HBL6636K	6" Velcro Pad no holes
H0103	6" Vac Velcro Hook Pad (6 holes)



8" PADS

PART NO	DESCRIPTION
BT2HG4-49-8V0Y	8' Backing Pad no holes
BT2HG4-49-8V9Y	8' Velcro Pad C/W 8 Holes

PAD HOOK-UP

90B81732	RECTANGULAR PAD FOR AIRCAT JITTERBUG SANDER
-----------------	---

MARVEL

WE HAVE RECOMMENDED
MARVEL AIR TOOL OIL
FOR OVER 30 YEARS.

- Provides positive lubrication for smooth starting
- Dissolves the deposits that cut down tool speed and reduce power output
- Prevents rust formation
- Assures maximum performance
- Lengthens the life of your tools

Part Numbers

H0076	Small bottle 4 US fl. oz. (118ml)
H0075	Case of 48 small bottles
H0077	Large bottle 32 US fl. oz. (946ml)
H0078	Case of 12 large bottles

Silicone free
ISO Grade 10
Freezingpoint: -51°C
Flashpoint: +51 °C



Marvel's unique formulation has a heavy-duty corrosion inhibitor to protect your AIRCAT Tool from moisture in the air line. It includes a solvent that breaks down deposits and gum, allowing them to be safely blown out of the exhaust, leaving a lasting coating of oil for lubrication and your air tool in peak condition. This oil is silicone free and protects o-rings, seals and other plastic parts.

AIR HOSES AND REELS

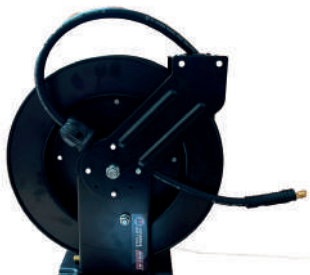


AH1015PVCREEEL

Ideal for automotive workshops

10mm (3/8") ID x 15m long
1/4" BSP M threaded fittings

Automatic or free running
Highly durable composite case
Steel mounting bracket

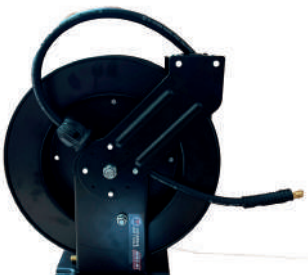


AH1315RREEEL

Ideal for commercial vehicle workshops and industrial applications

13mm (1/2") ID x 15m long
1/2" BSP M & F threaded fittings

Highest quality rubber hose
Automatic or free running
Reinforced steel housing



AH1015RREEEL

Ideal for commercial vehicle workshops and industrial applications

10mm (1/2") ID x 15m long
1/4" BSP M & F threaded fittings

Highest quality rubber hose
Automatic or free running
Reinforced steel housing



RUBBER WHIP HOSE

Recommended to isolate the vibration at the air tool from the quick coupling and prevent accidents

All supplied with male & female threaded fittings

AH08RWHIP - 8mm ID x 0.5m with **1/4"** BSP
AH10RWHIP - 10mm ID x 0.5m with **1/4"** BSP
AH13RWHIP - 13mm ID x 0.5m with **1/2"** BSP

RUBBER ALLOY, RUBBER & HIGH VIZ RUBBER HOSE

Working Pressure 290 PSI (20 Bar)
Burst Pressure 870 PSI (60 Bar)
Temperature Range -20°C to +70°C
100% Silicone Free
Oil & Abrasion Resistant



Rubber Alloy	Rubber	High Viz	Hose ID	Length	Fitting A	Fitting B
AH0805RA	AH0805R	AH0805HV	8mm	5m	1/4" BSP Male	1/4" BSP Male
AH0810RA	AH0810R	AH0810HV	8mm	10m	1/4" BSP Male	1/4" BSP Male
AH0815RA	AH0815R	AH0815HV	8mm	15m	1/4" BSP Male	1/4" BSP Male
AH0820RA	AH0820R	AH0820HV	8mm	20m	1/4" BSP Male	1/4" BSP Male
AH1005RA	AH1005R	AH1005HV	10mm	5m	1/4" BSP Male	1/4" BSP Male
AH1010RA	AH1010R	AH1010HV	10mm	10m	1/4" BSP Male	1/4" BSP Male
AH1015RA	AH1015R	AH1015HV	10mm	15m	1/4" BSP Male	1/4" BSP Male
AH1020RA	AH1020R	AH1020HV	10mm	20m	1/4" BSP Male	1/4" BSP Male
AH1305RA	AH1305R	AH1305HV	13mm	5m	1/2" BSP Male	1/2" BSP Female
AH1310RA	AH1310R	AH1310HV	13mm	10m	1/2" BSP Male	1/2" BSP Female
AH1315RA	AH1315R	AH1315HV	13mm	15m	1/2" BSP Male	1/2" BSP Female
AH1320RA	AH1320R	AH1320HV	13mm	20m	1/2" BSP Male	1/2" BSP Female



1/4" BSP STANDARD SERIES



Adaptor

Male Female
SA38N SA38FN



Quick Coupling

Male Female
CU38-MN CU38N

1/4" BSP SUPER FLOW



Adaptor

Male Female
SA38NSF SA38FNSF



Quick Coupling

Male Female
CU38-MNSF CU38NSF

3/8" BSP 1/2" BSP 100 SERIES



Adaptor

3/8" BSP Male
1/2" BSP Female
SA12 SA1212



Quick Coupling

Female
CU100F
CU1212

CU38-YN Y-Piece



INTEGRAL TAILPIECES

IT38N 10mm ID to Standard Adaptor
IT12 13mm ID to 100 Series



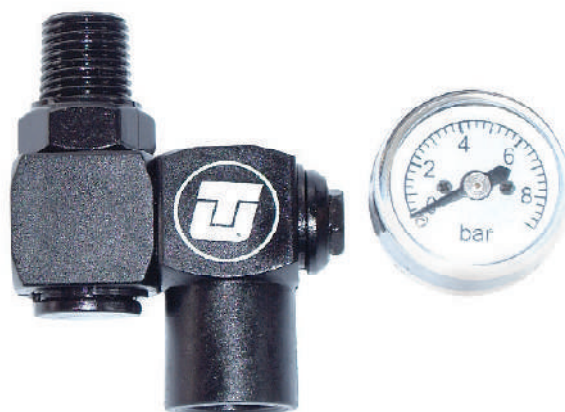
TAILPIECES

TP14 6mm ID to 1/4" BSP
TP38N 10mm ID to 1/4" BSP
TP12 13mm ID to 3/8" BSP
TP1212 13mm ID to 1/2" BSP



H01415

1/4" BSP Swivel
Coupling with Gauge



USE OF ACCESSORIES WITH AIR TOOLS

When selecting the correct accessory to use with your air tool(s) the following points must be carefully checked:

- The accessory is rated to run at or above the maximum rated speed of the air tool that you plan to use it on.
- Air tool Manufacturers specify these speeds in their catalogs and operator instructions.
- Accessories used on abrasive tools, impact wrenches, nut runners, ratchets, air hammers and scaling hammers must be rated for use with the relevant air tool.
- Any accessory used should be of the correct size and design for the air tool(s) that you plan to use it with.
- Worn accessories should not be used and accessories should not be modified in any way.
- Mounting and fitting instruction for any accessory to be used on an air tool must be carefully followed at all times.
- Use of worn or incorrect accessories may reduce tool performance, create excessive tool wear and can be hazardous
- Always disconnect the tool from the air supply when changing of fitting accessories, guards or other fittings.

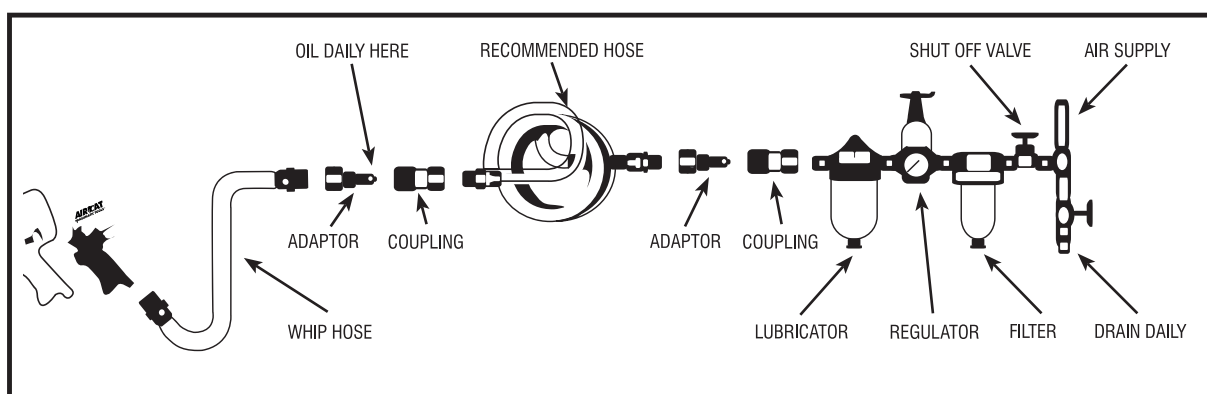
OPERATOR TRAINING FOR AIR TOOL; AIR TOOL ACCESSORY AND COMPRESSED AIR USE

- All operators should be trained in the correct installation and use of the air tool(s) that they are required to operate.
- All operators should be trained to understand the safety instructions provided by the air tool manufacturer, for each
- Air tool that they are required to operate.
- All operators should be trained in the safe use of compressed air and the use of associated air hoses, connectors and air tool accessories.
- All operators should be trained to operate an air tool and accessories safely and correctly on the application that you plan to use them for.
- Operators or service personnel should be trained to ensure that the air installation, lubricators, filters, regulators, hoses and air nipples and connectors are checked regularly to ensure that they meet the requirements set on a continuous basis.

AIR SUPPLY

Tools of this class operate on a wide range of air pressure. It is recommended that air pressure of these tools measures 90 PSI at the tool while running free. Higher pressure and unclean air will shorten the tool's life because of faster wear and may create a hazardous condition and void the warranty. Water in the air line will cause damage to the tool. Drain the air tank daily. Clean the air inlet filter screen on at least a weekly schedule.

The recommended hookup procedure can be viewed in the illustration below. The air inlet used for connecting air supply has standard 1/4" NPT for smaller tools and 3/8" NPT for larger tools as specified in the tool manual. Line pressure should be increased to compensate for unusually long air hoses (over 25 feet). Minimum hose diameter should be 3/8" I.D. for smaller tools and 1/2" for larger tools as specified in the tool manual.



AIRCAT WARRANTY



AIRCAT® and NITROCAT® air tools are warranted to be free from defects in material and workmanship for 2 years from date of purchase. We will repair or replace; at our option any defective part or unit which proves to be defective in material or workmanship during this 2 year period.



VIBROTHERM DRIVE® air tools and our low weight 1" impact series models (1991, 1991-1 and 1870-P) are warranted to be free from defects in material and workmanship for 3 years from date of purchase. We will repair or replace; at our option any defective part or unit which proves to be defective in material or workmanship during this 3 year period.

The foregoing obligation is AIRCAT® sole liability under this or any implied warranty, under no circumstances shall it be liable for any incidental or consequential damages.

This warranty applies to the tool only. This warranty does not apply to any attached accessories/consumable products; such as drill chucks, sander backing pads, air hammer retainers and chisels or "kit" accessories or any other accessory included with the tool.

Any repair required due to normal wear and tear, abuse, misuse, modification of the tool or repair attempts (by other than an AIRCAT® Authorized Service Center) are not covered by this warranty.

Return your tool to an AIRCAT® Authorized Service Center freight prepaid. Be sure to include your name, address, copy of purchase with date and description of the suspected defect.

AIRCAT whose policy is continued product improvement reserves the right to make changes in design or construction at any time without incurring any obligation on tools previously sold.

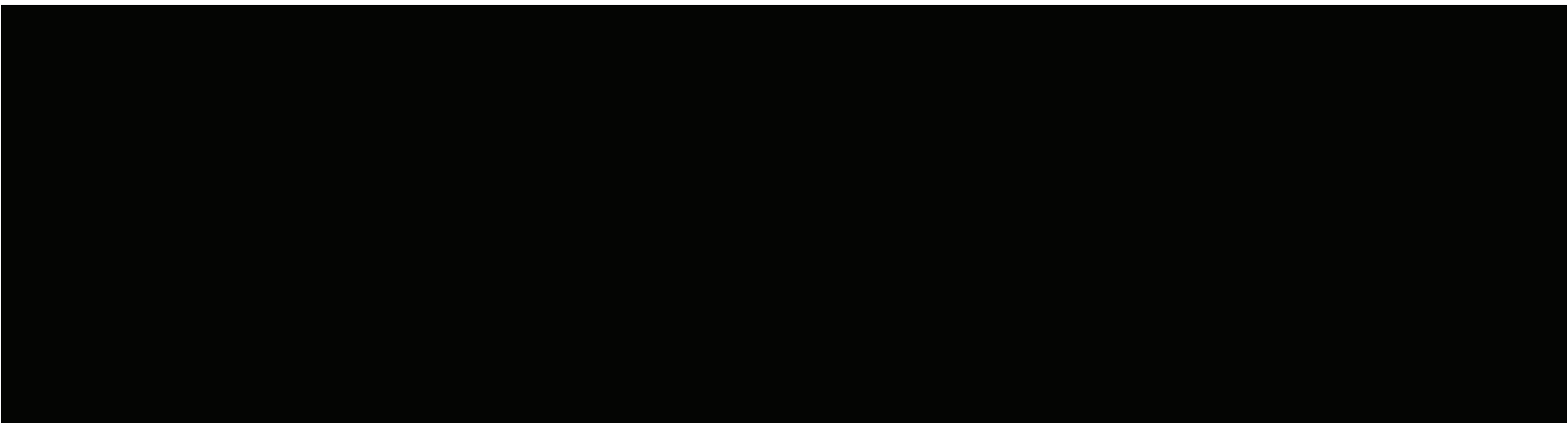
INDUSTRY ASSOCIATIONS



All Universal Air Tool & AIRCAT products are rigorously inspected, and performance tested in our factory before shipping to our customers. If a tool develops a performance problem and an inherent defect is found during normal use and service, Universal Air Tool will warrant this tool against defects in workmanship and materials.

- Wearable parts and products are NOT covered under this warranty. Uncovered items include bearings, contact wheels, hammers, impact mechanism, rotor blades, regulators, valve stems, levers, shrouds, guards, O-rings, seals, gaskets, and other wearable parts.
- All claimed tools (warranty or non-warranty) must be returned only to the certified and approved repair agent of Universal Air Tool Company Ltd.
- Carriage and carriage costs needs to be organized through the relevant Universal Air Tool distribution channel. These costs will be reimbursed if the warranty claim is verified by the repair agent up to the value of 10.00 GBP.
- The original invoice and proof of purchase needs to be sent with the returned tool including a failure report.
- In cases where there is a question regarding possible defective or abused tools, the repair agent will return them to UAT for a determination.
- Tools are warranted against defects in materials and workmanship to the original purchaser.
- These warranties do not apply to items that have been misused, abused, altered in any way, or worn out from use.
- All rotating parts are not covered by the tool's warranty, as this is due to application, use and handling.
- Products used in wrong applications / industries as defined by Universal Air Tool are excluded from this warranty.
- Tools that are sent for inspection or as a warranty claim due to poor compressed air quality or a missing FRL are not warranty cases and will not be accepted.
- If the customer uses more than the prescribed operating pressure of 6.2 bar / 90 psi, which leads to a failure of the tool, this will also not be accepted as a warranty claim and will be rejected.
- After a determination is made, we will credit, replace, or repair the tool at our option. Tools that have been ground, filed, welded, abused, hammered, or modified in any way are not covered under warranty.
- Universal Air Tool Company Ltd. shall not be liable for any consequential or incidental damages incurred by the distribution channel. Distribution channels sole and exclusive remedy for any loss incurred shall be a refund of the selling price. The exclusive remedy for any product found to be defective under the above warranties is limited to the repair or replacement of the defective product without charge.
- Universal Air Tool Company Ltd. will not accept any warranty claims if the products have not been used with the recommended accessories for pneumatic air tools (correct size, length and quality of couplings, adapters, extensions bars, sockets, air hose). This also includes damaged accessories which could have an adverse impact on the performance of the tool.
- In the event of a tool being returned to a repair agent – following inspection no fault is identified, any associated costs will be charged to the relevant distribution channel.

NOTES





KILLER

TORQUE

AIRCAT UK

A Division of Florida Pneumatic
Manufacturing Corporation
Universal Air Tool Company Limited
Unit 8 Lane End Industrial Park
Lane End
High Wycombe
Buckinghamshire
HP14 3BY
Tel: +44 (0)1494 883300
www.aircat-tools.com

AIRCAT
PNEUMATIC TOOLS

AIRCAT EUROPE

Universal Air Tool
Branch Germany
Contact: Derya Kislá
+49 163 2554869
email: dkisla@ut-tools.com
Centroallee 273 - 277
46047 Oberhausen
Germany