



MARTIN'S HAZEL
DOB: Mar 10, 2019 -
Owner: RACHEL MARTIN
Cert/Test:
BG#169311

Sex: F **Reg#:** WS63914801 (AKC)



CH KEEPINTOUCH DELLA TORRE D'OVARDA
 WS46250401 (AKC) | 2008 - 2019 | BG#77564
 HD A ED 0/0 CARD vWD DM



FR CH TANNHÄUSER DES HAUTES VERNADES
 LOF 020437/03144 05/08 (SCC) | 2002 - | BG#61093
 HD-A ED-0



SIRE:

CH BRAVEHEART Z KRAINY ZEUSA
 WS37947502 (AKC) | 2011 - | BG#79611
 OFA/H-E OFA/EL CERF CARD vWD DM

BLUESUEDESHOES DELLA TORRE D' OVARDA
 LOI 0619628 (ENCI) | 2005 - 2015 | BG#57361

JCH PL CH TERTZO'S DARWIN
 DK13676/2004 (DKK) | 2004 - | BG#30505
 HD A ED 0/0

CLEO MARKOWY KLAN
 PKR 11-90632 (ZKWP) | 2006 - 2014 | BG#77565
 HD A ED 0/0

AXA MARKOWY KLAN
 PKR II 79604 (AKC) | 2004 - | BG#80283
 HD A

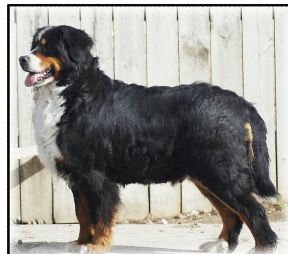


BOSCO MARTIN
 WS41862901 (AKC) | 2012 - | BG#116385
 OFA/H-E

NO CURE FOR LOVE HELVETIUS
 WS39505801 (AKC) | 2010 - | BG#83712
 OFA/H-G

DAM:
DANCING WILLOW
 WS54171006 (AKC) | 2016 - | BG#169312

BASZA Z KASZUBSKIEJ SZWAJCARI
 WS27173701 (AKC) | 2006 - | BG#62469
 OFA/H-E OFA/EL



DANCER
 WS33796505 (AKC) | 2010 - | BG#98693
 OFA/H-G

BURNING BUSH BARNEY
 WS18156603 (AKC) | 2006 - | BG#119909

BURNING BUSH BELLE BELLE
 WS27730107 (AKC) | 2008 - | BG#119910