

HAUNT COMP 2023
TEAM 28

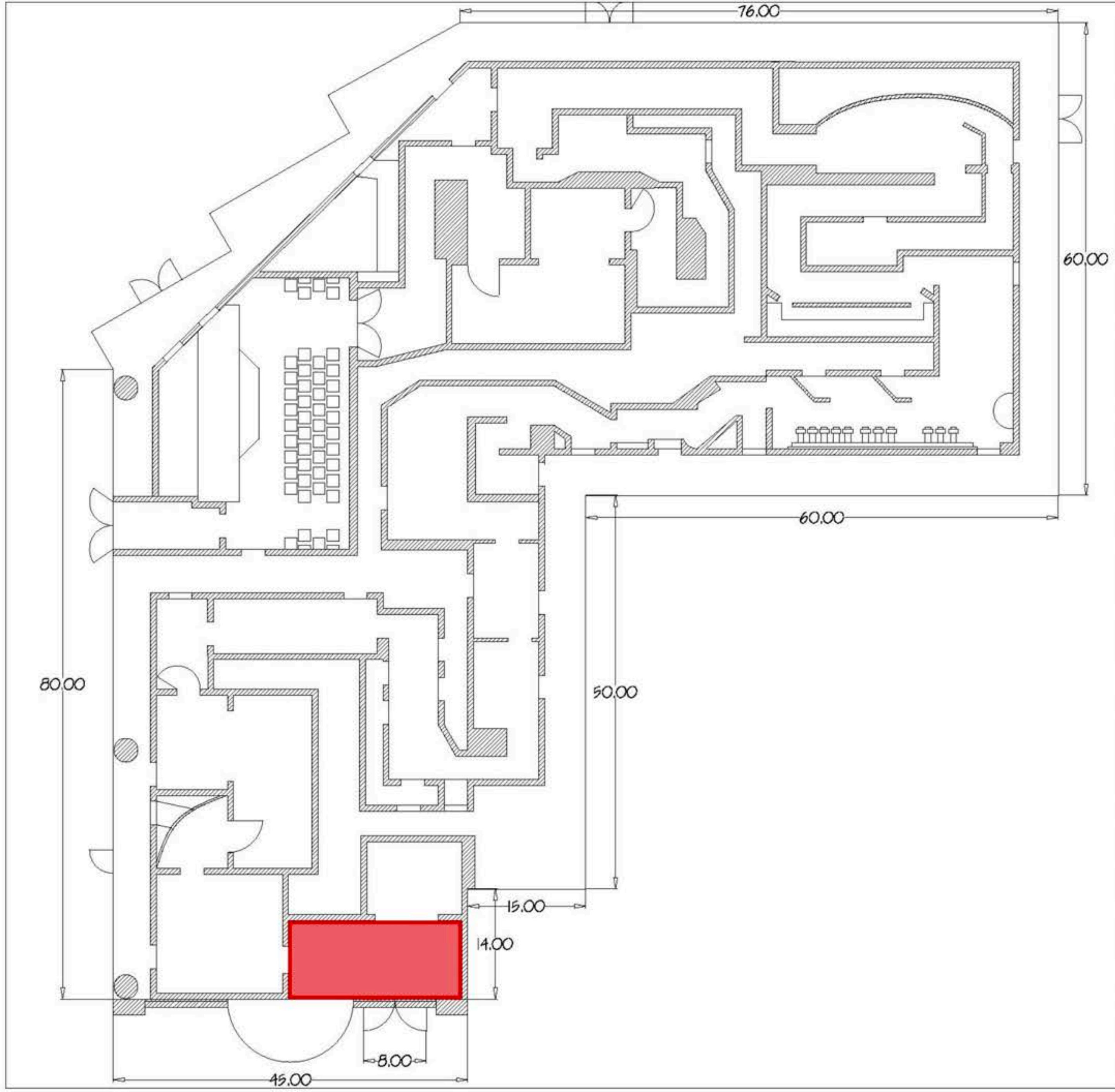


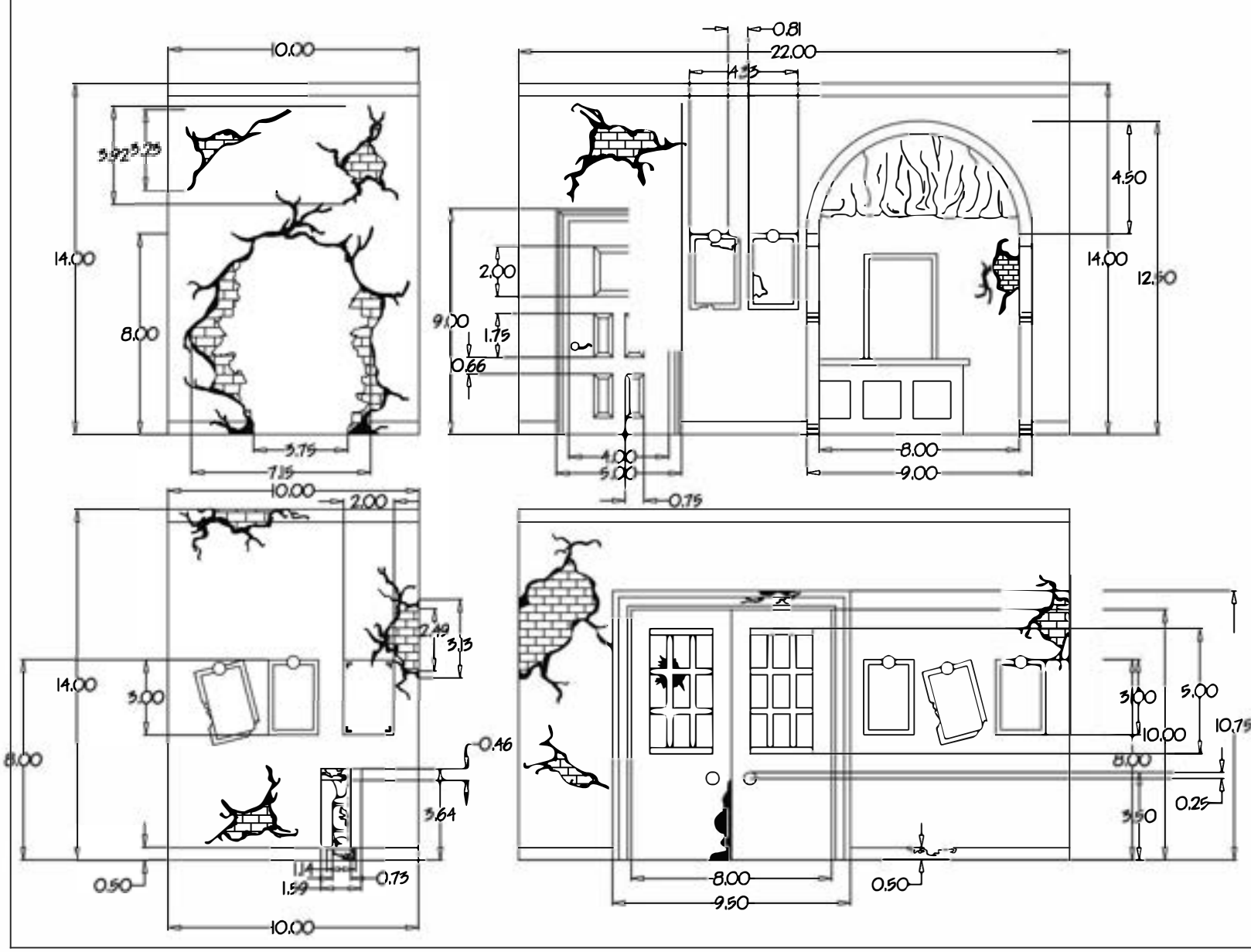
TRAGEDY

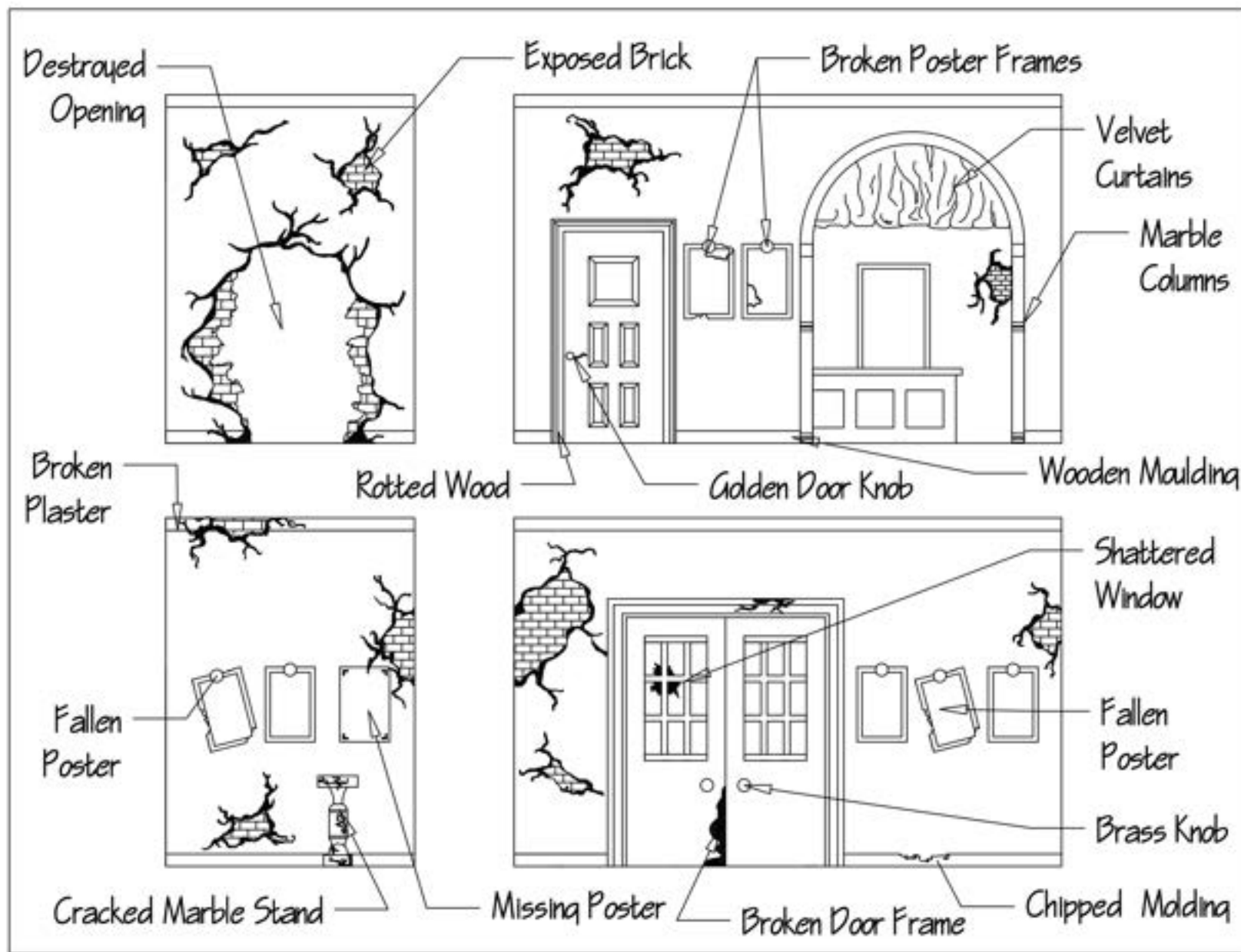


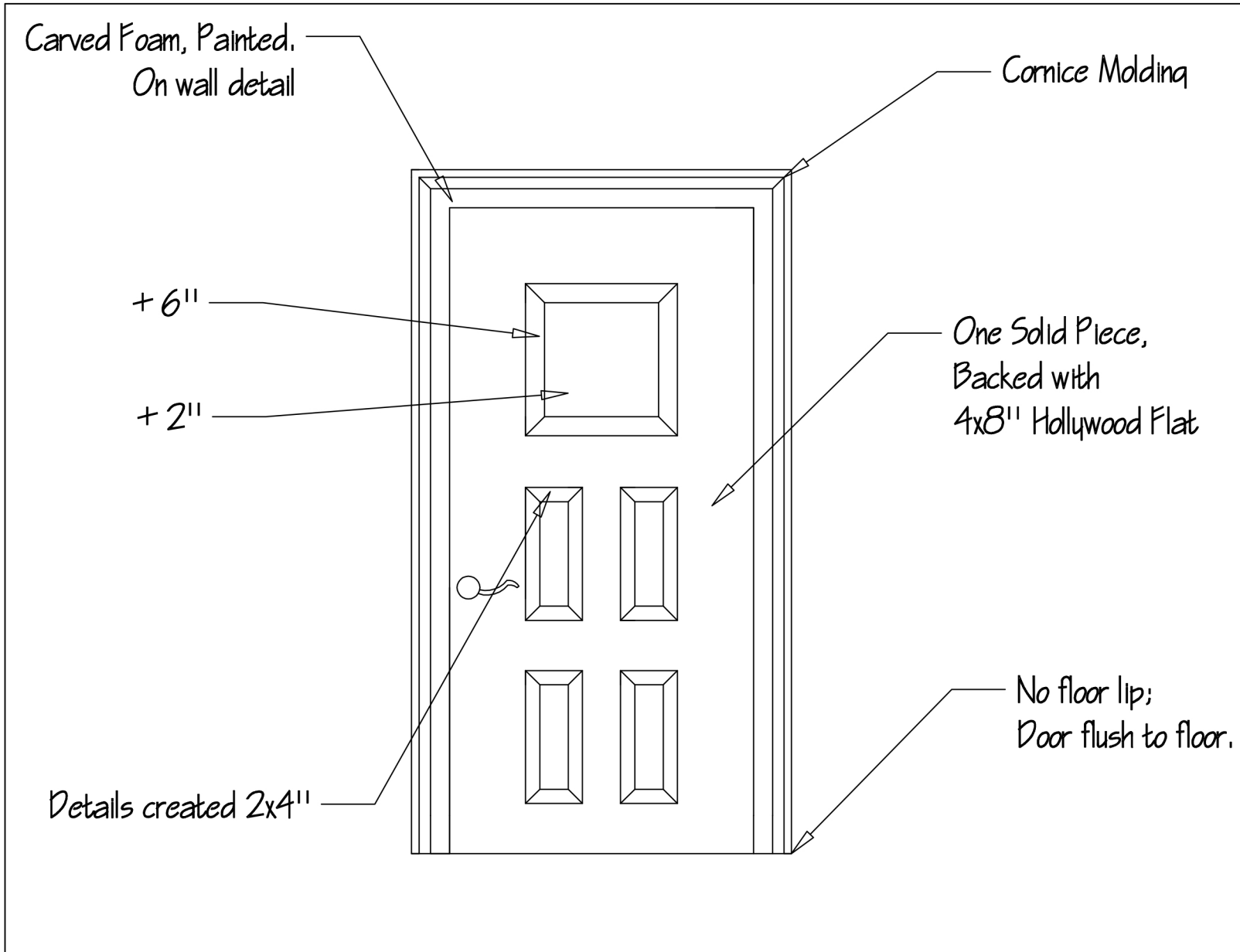
The Curse of Theatre de L'enfer

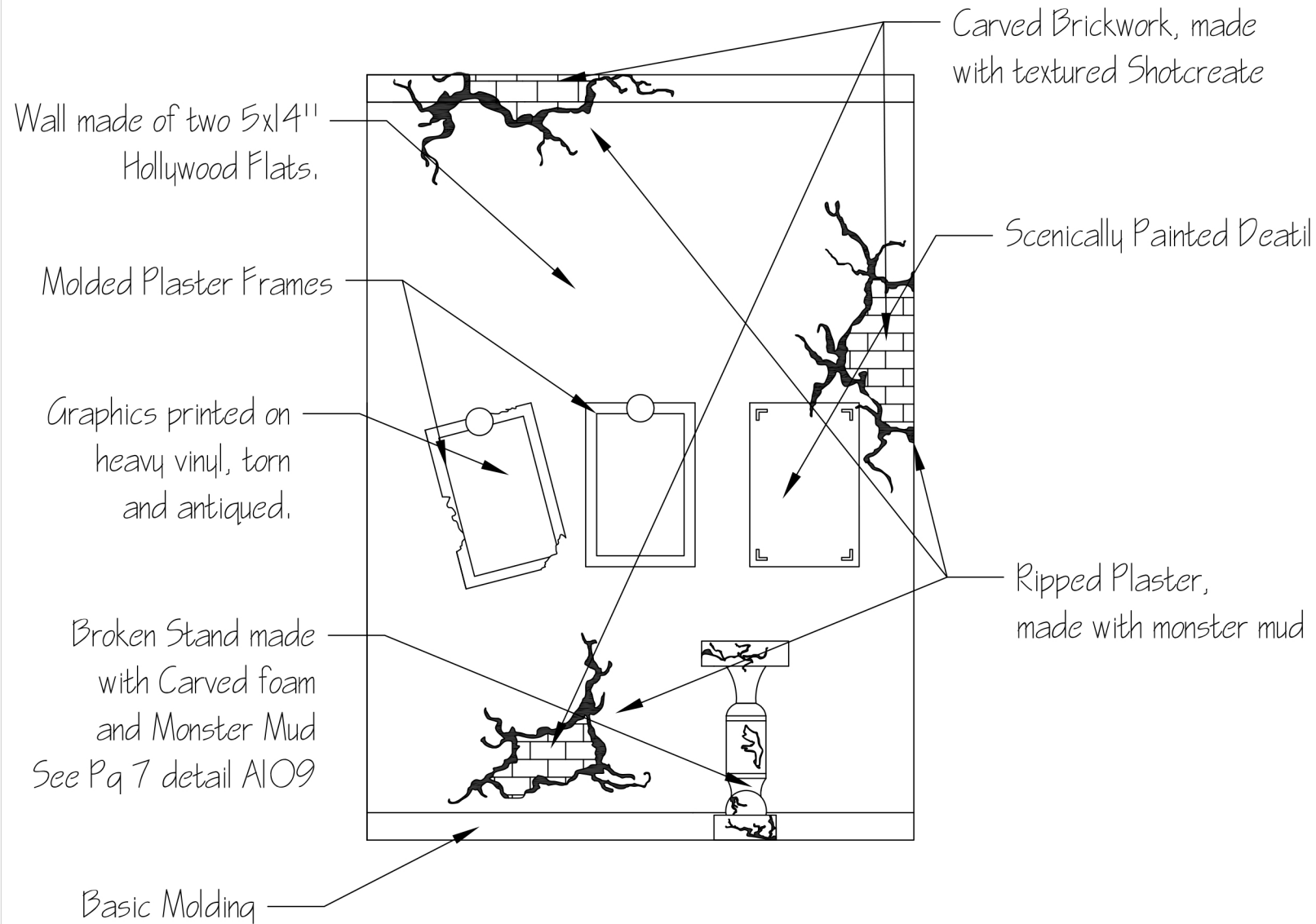
SCHEMATIC DELIVERABLE

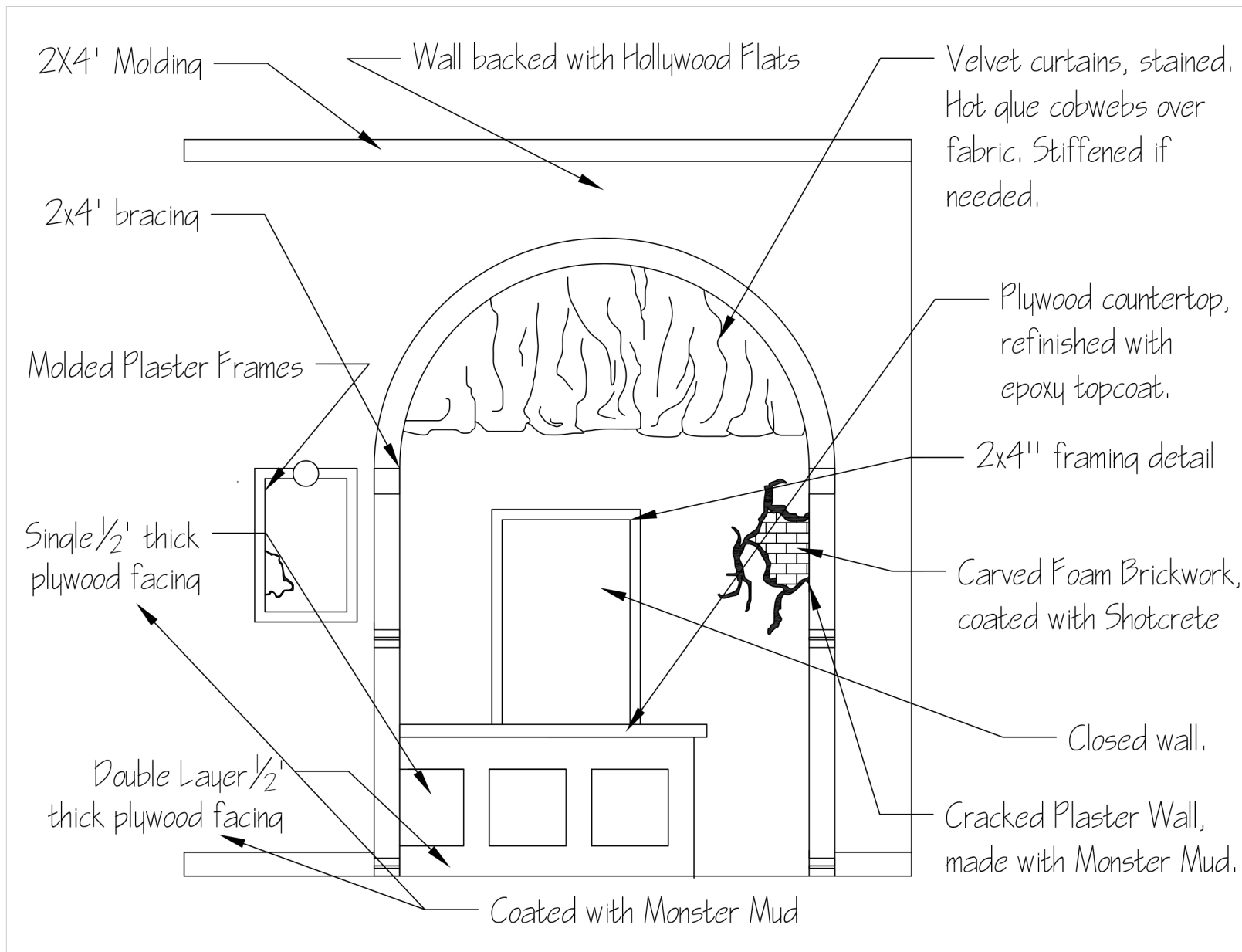












HAUNT COMP 2023
TEAM 28

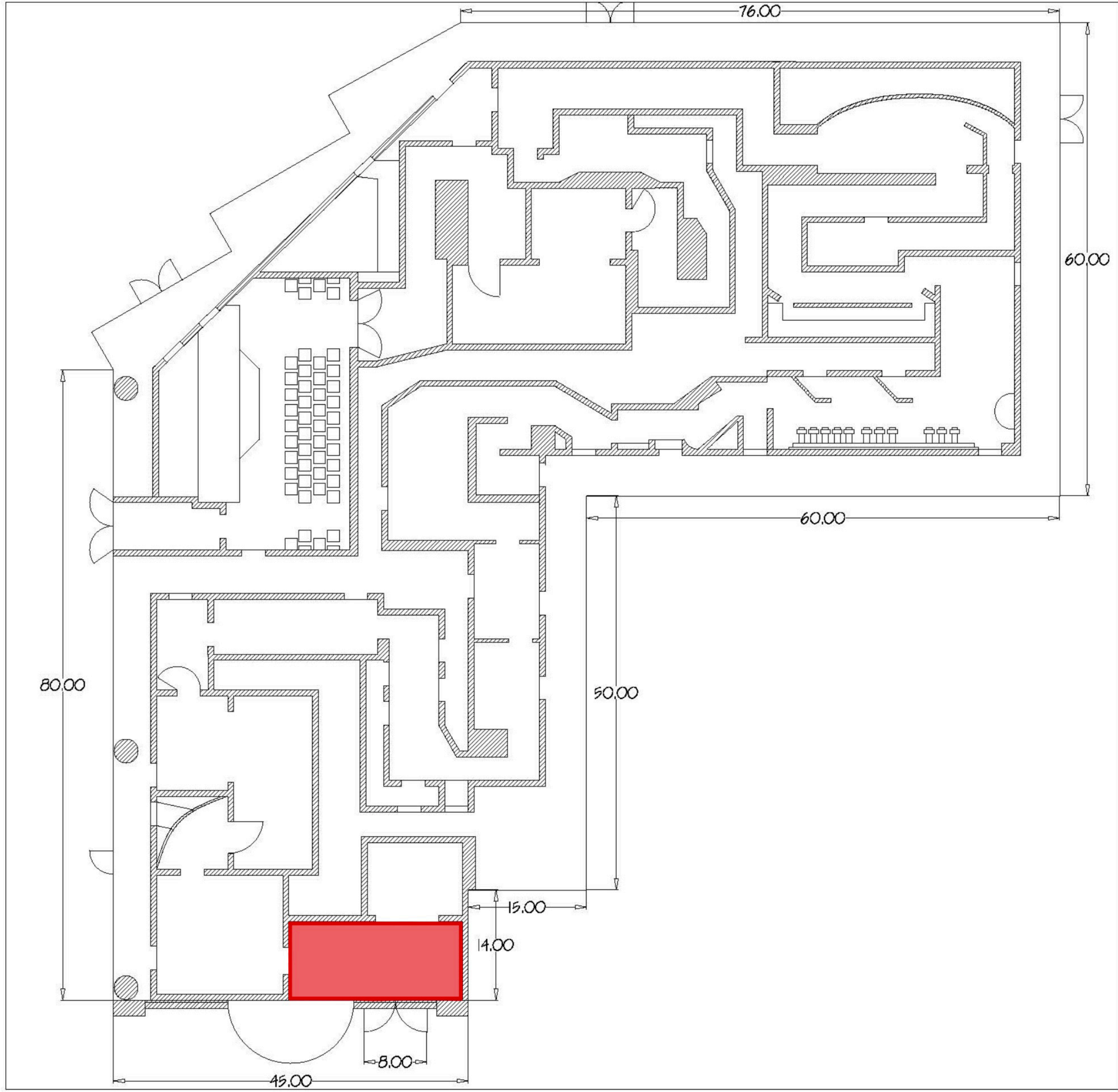


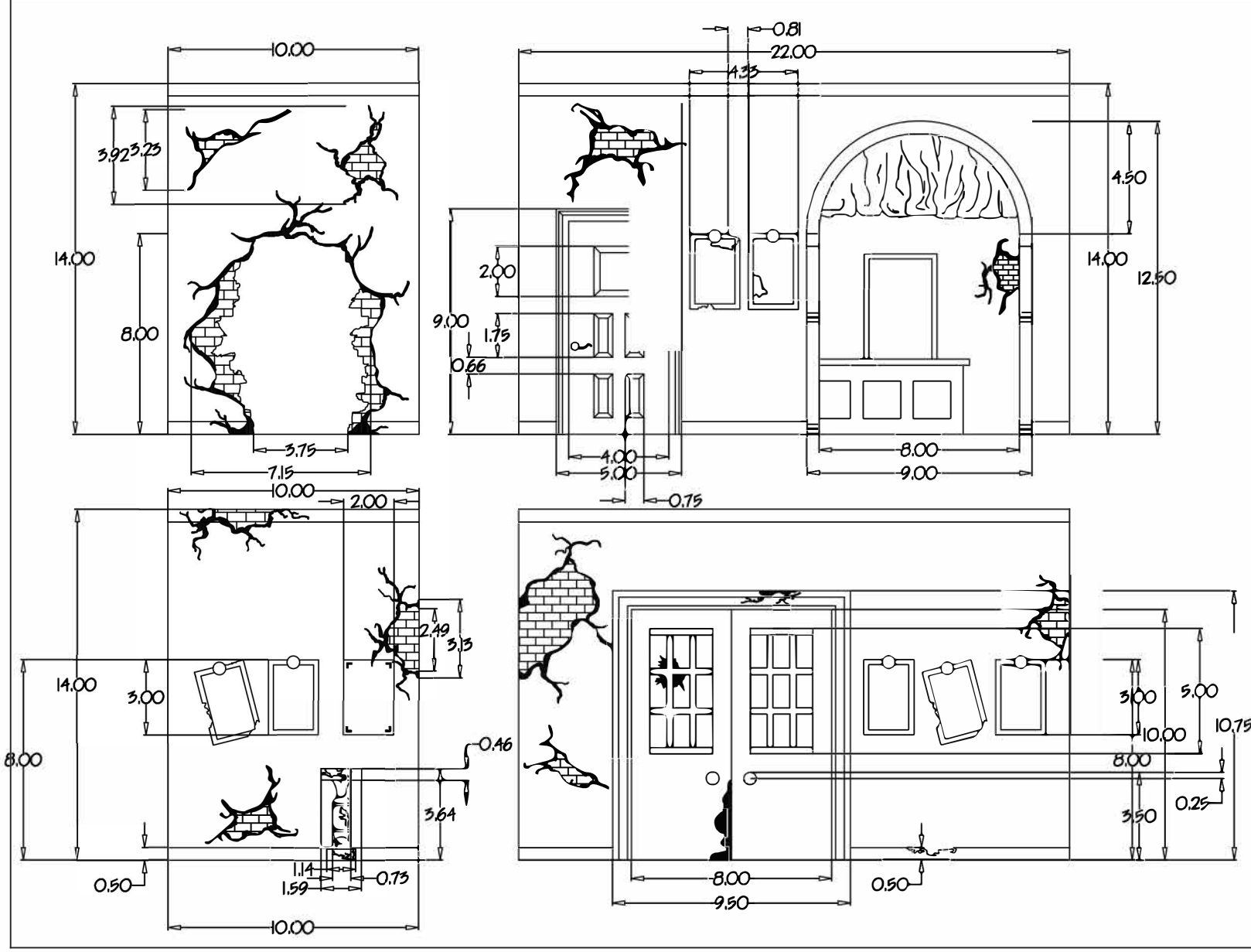
TRAGEDY

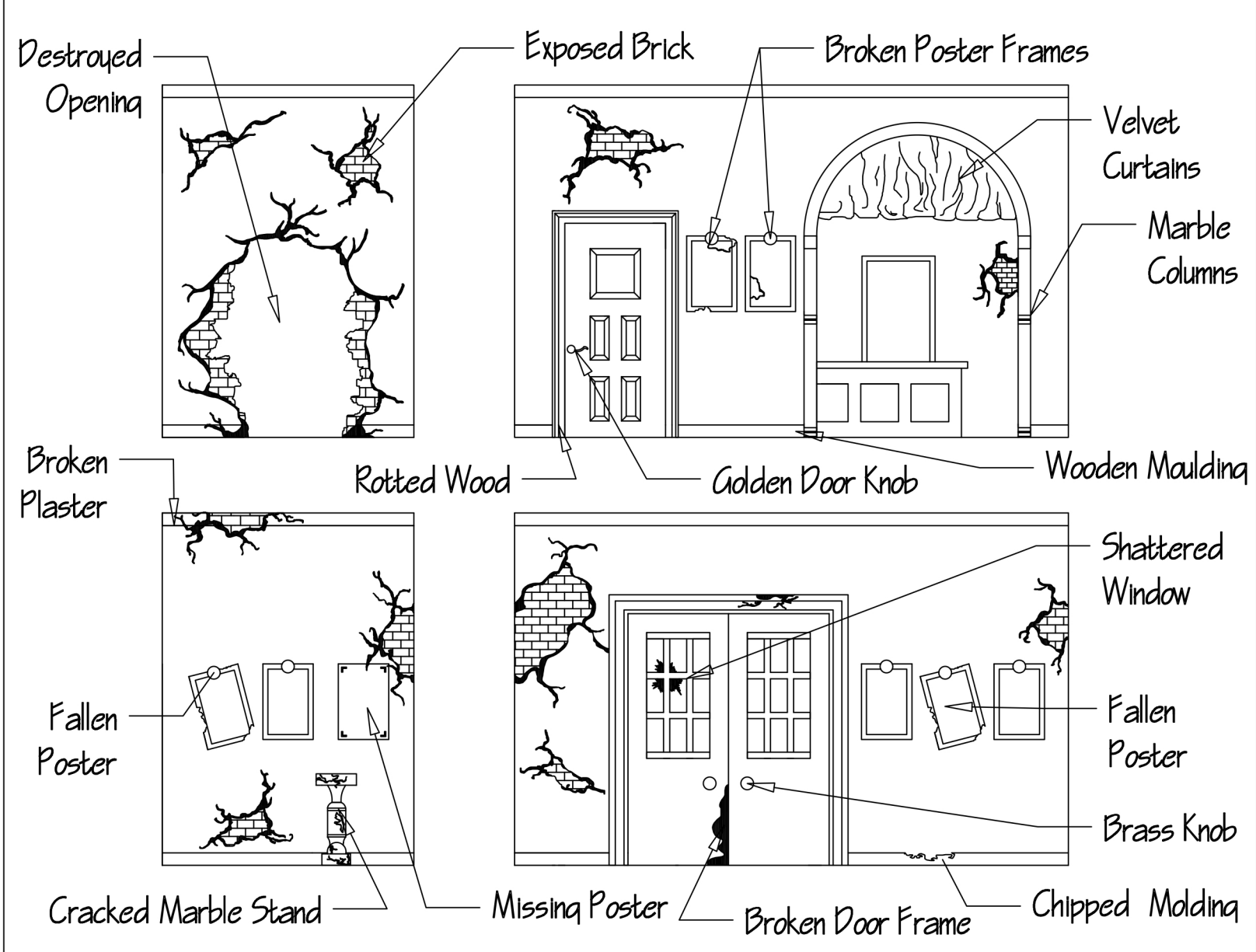


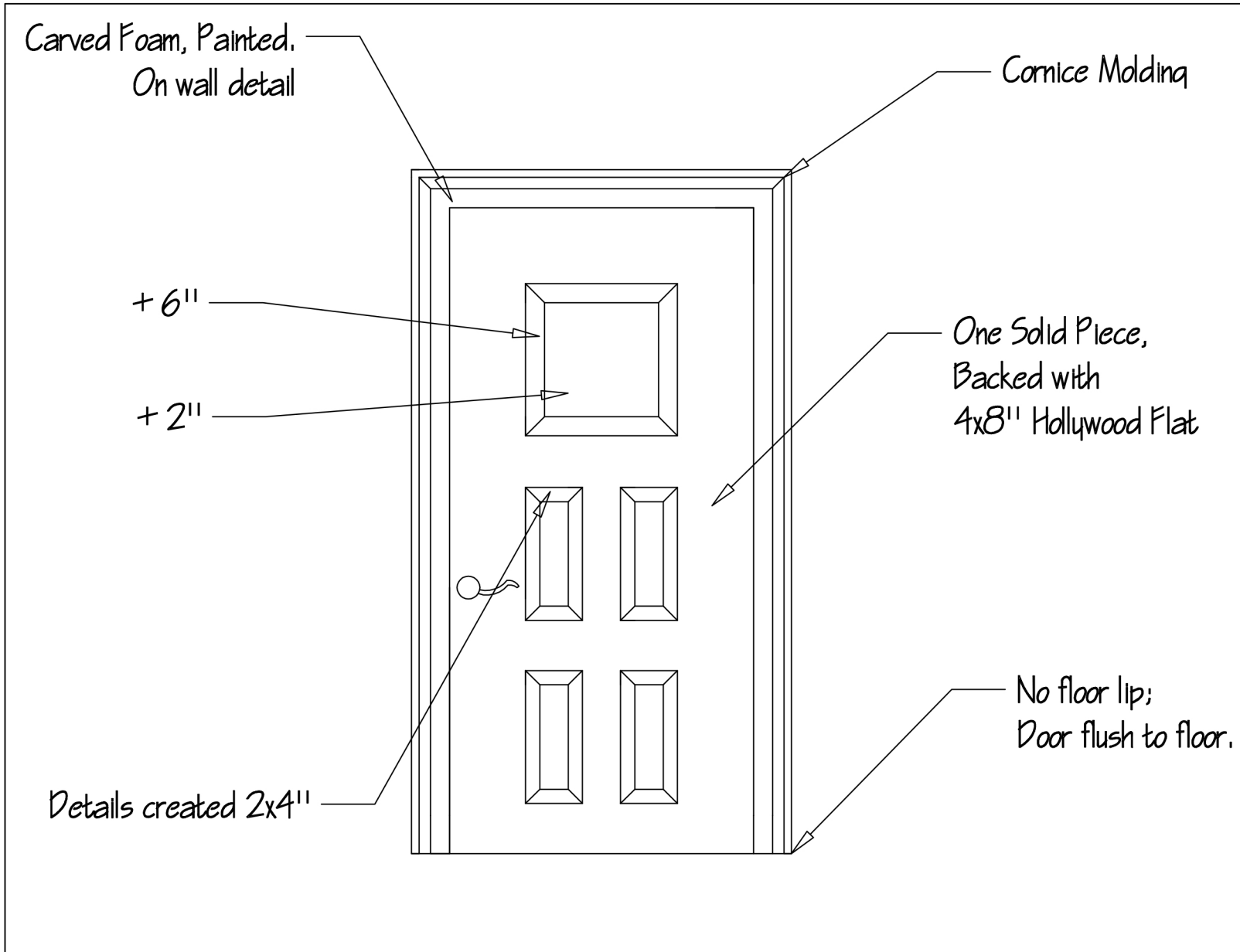
The Curse of Theatre de L'enfer

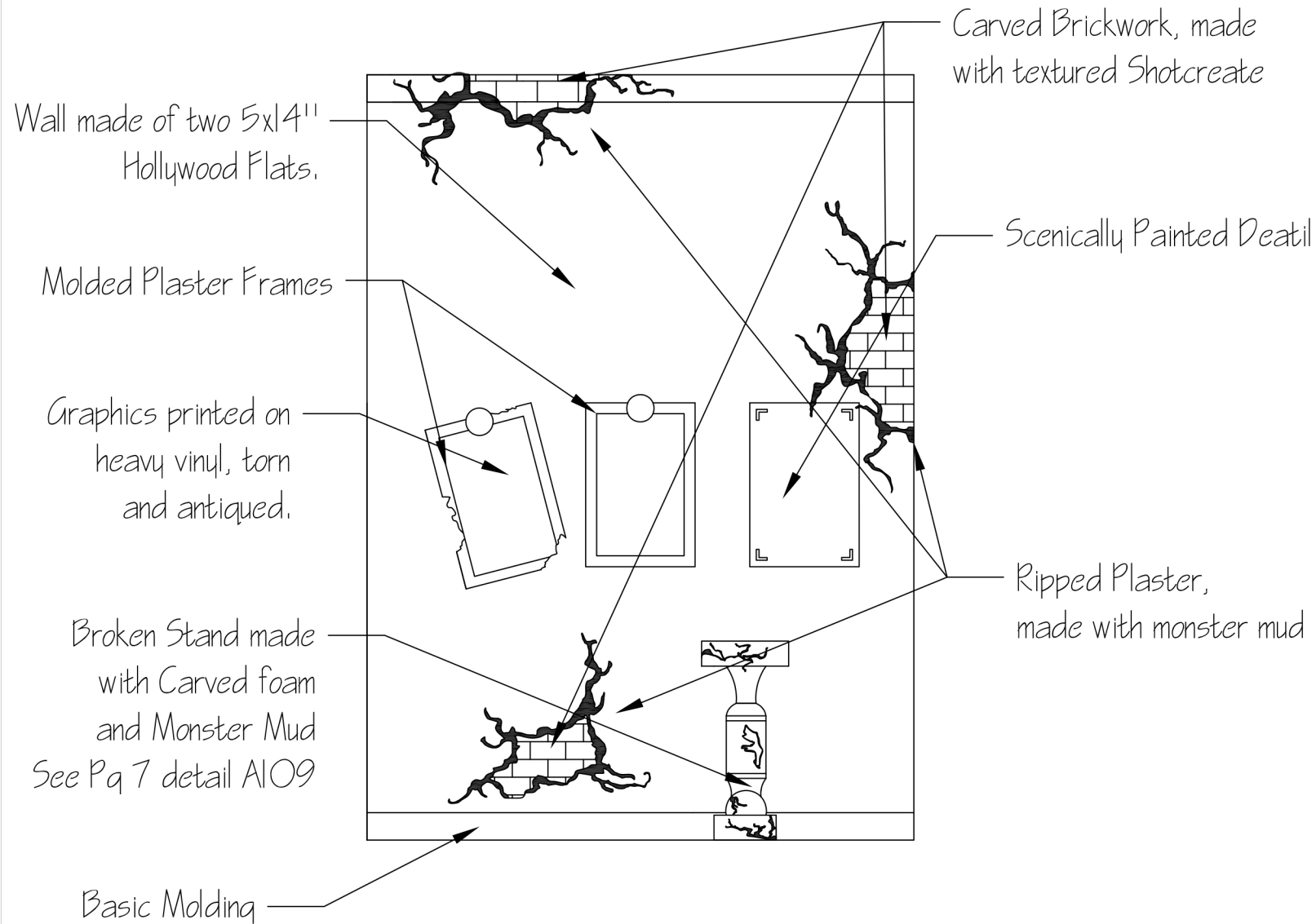
SCHEMATIC DELIVERABLE

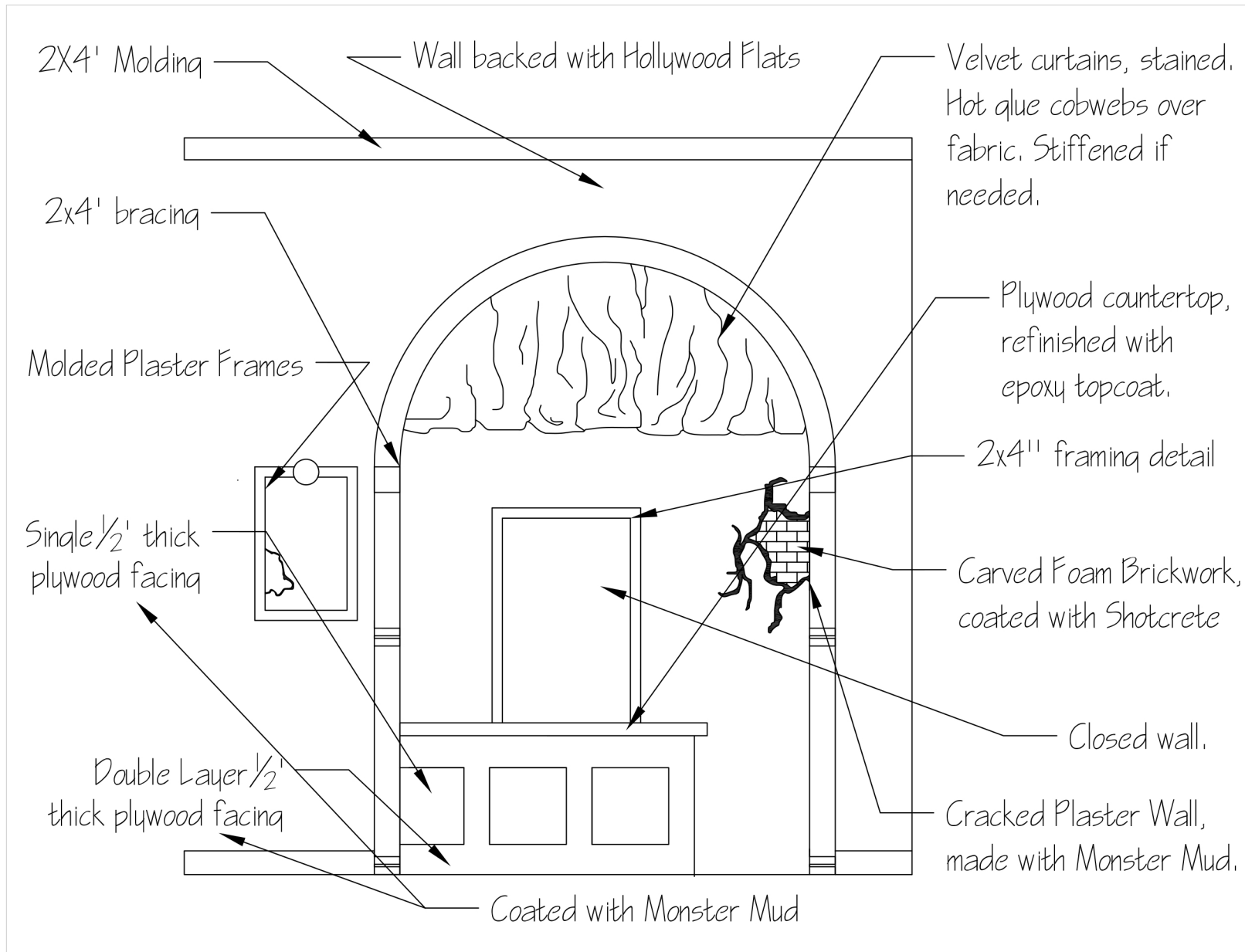












TRAGEDY

The Curse of Theatre de L'enfer

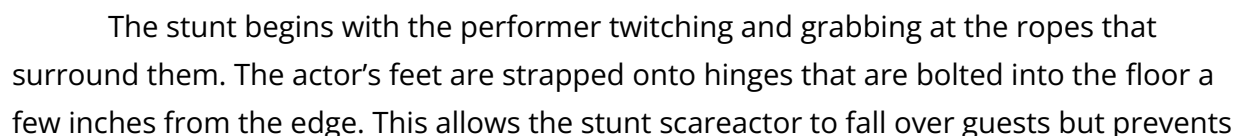
Stunt Deliverable

At the end of a towering hallway, you see an actor atop a raised platform over the path below. The actor is entangled in the backstage rigging. The actor does a series of jerks and twitches until they lean forward off the platform. Using a bungee cord, the actor pops back onto the platform before hitting the guests below. You continue walking under the platform and into the next scene.

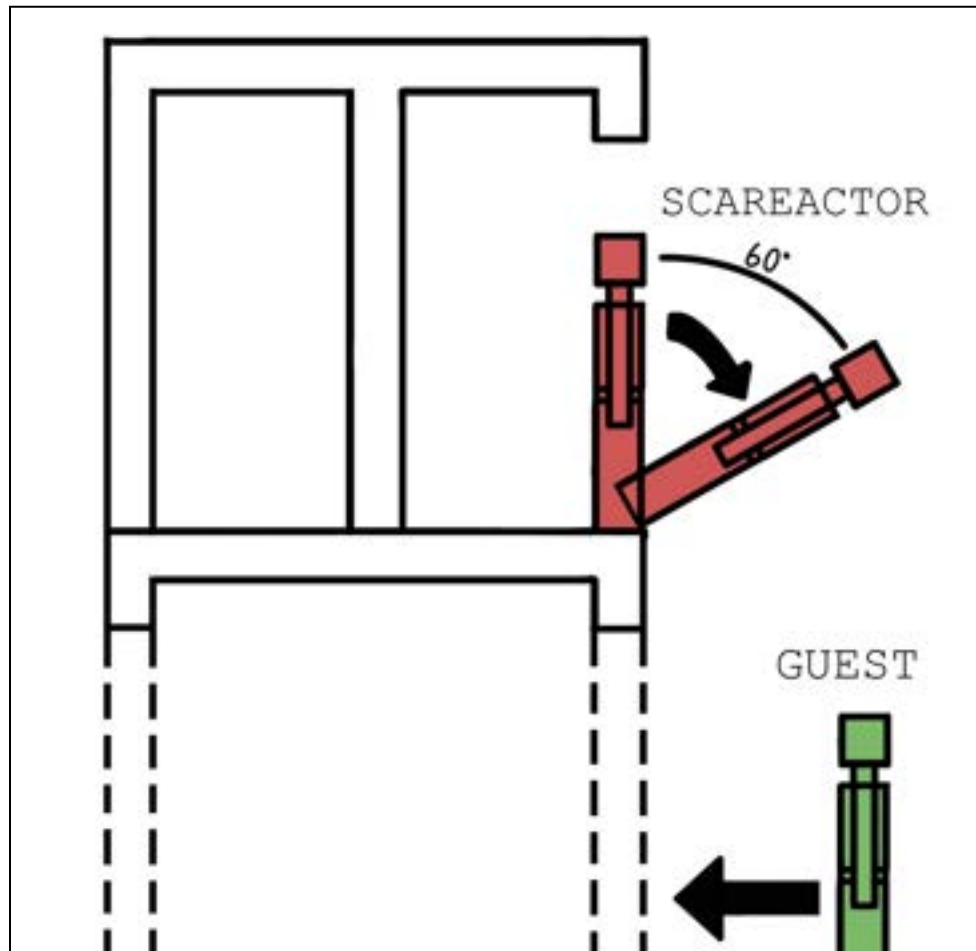
The stunt consists of a performer dressed in a costume resembling that of a stage actor being strangled by ropes belonging to the theater's rigging system. The Jerk Vest harness is hidden within the performer's costume and the bungee cables are disguised as ropes.



Cast changes will happen more frequently than in the rest of the house. The stunt will switch out every 15 minutes, rotating between 3 different performers. Each performer will spend 15 minutes performing the stunt and 30 minutes on break. This way each performer is able to give their all and guests can have the best experience possible.



their feet from leaving the platform. They lean forward and fall off the platform at a maximum 60-degree angle over guests. The performer stays nearly horizontal and reaches at guests for a few seconds then is reeled back to a standing position using a winch mechanism.



Two bungee cables, each having a capacity of 1000 lbs, connect to the performer's harness. This ensures a safety factor of 10:1 and avoids a single point of failure allowing for any performer under 200 pounds to perform the stunt safely as per the ANSI E1.43 2016 Entertainment Technology Performer Flying Standard.

In the chance of an emergency, the scareactor attendant will assist the stunt performer in removing them from the stunt equipment. They will make their way down the stairs and through the nearest exit. This emergency action plan will be practiced frequently

so if a real emergency does happen, everyone can make it out safely and in a timely manner.

Due to the complicated nature of the stunt, the stunt scareactors will have extra practice time. They will arrive 45 minutes before the rest of the haunt's scareactors. During this practice time, they will go over set up, cast changes, and performing the stunt alongside the scareactor attendants. As well as practicing the emergency action plan at least once. This dedicated rehearsal time ensures that each scareactor will have plenty of time to perfect their scare and each attendant will know how to assist the scareactors.

OSHA laws acknowledge aesthetics onstage during a performance with an audience allowing for some leeway in standard safety regulation, however, this does not apply when the house is not running. When the haunt is not in operation, a railing is placed in front of the opening where the stunt scareactor falls to ensure the safety of any crew members that walk past during non-operating hours.

TRAGEDY

The Curse of Theatre de L'enfer

Stunt Deliverable

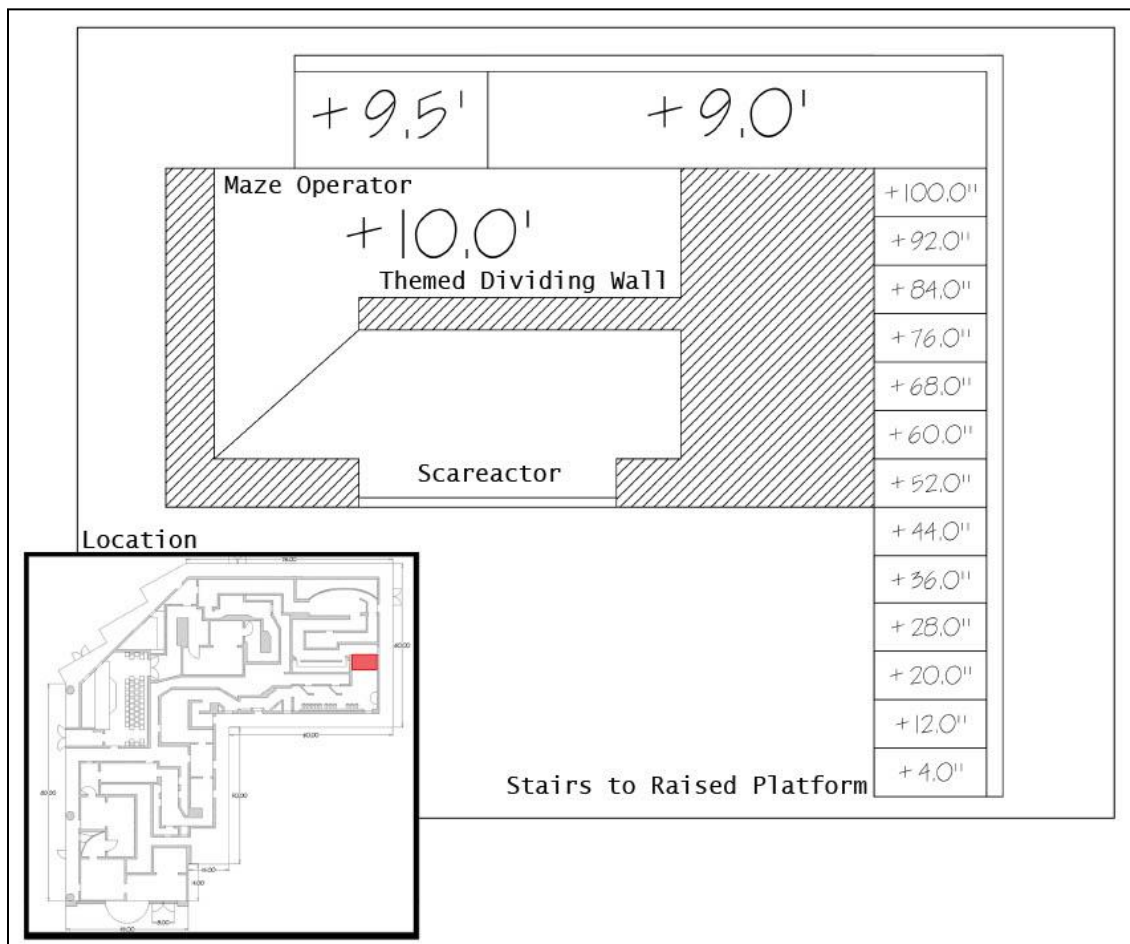
At the end of a towering hallway, you see an actor atop a raised platform over the path below. The actor is entangled in the backstage rigging. The actor does a series of jerks and twitches until they lean forward off the platform. Using a bungee cord, the actor pops back onto the platform before hitting the guests below. You continue walking under the platform and into the next scene.

The stunt consists of a performer dressed in a costume resembling that of a stage actor being strangled by ropes belonging to the theater's rigging system. The Jerk Vest harness is hidden within the performer's costume and the bungee cables are disguised as ropes.



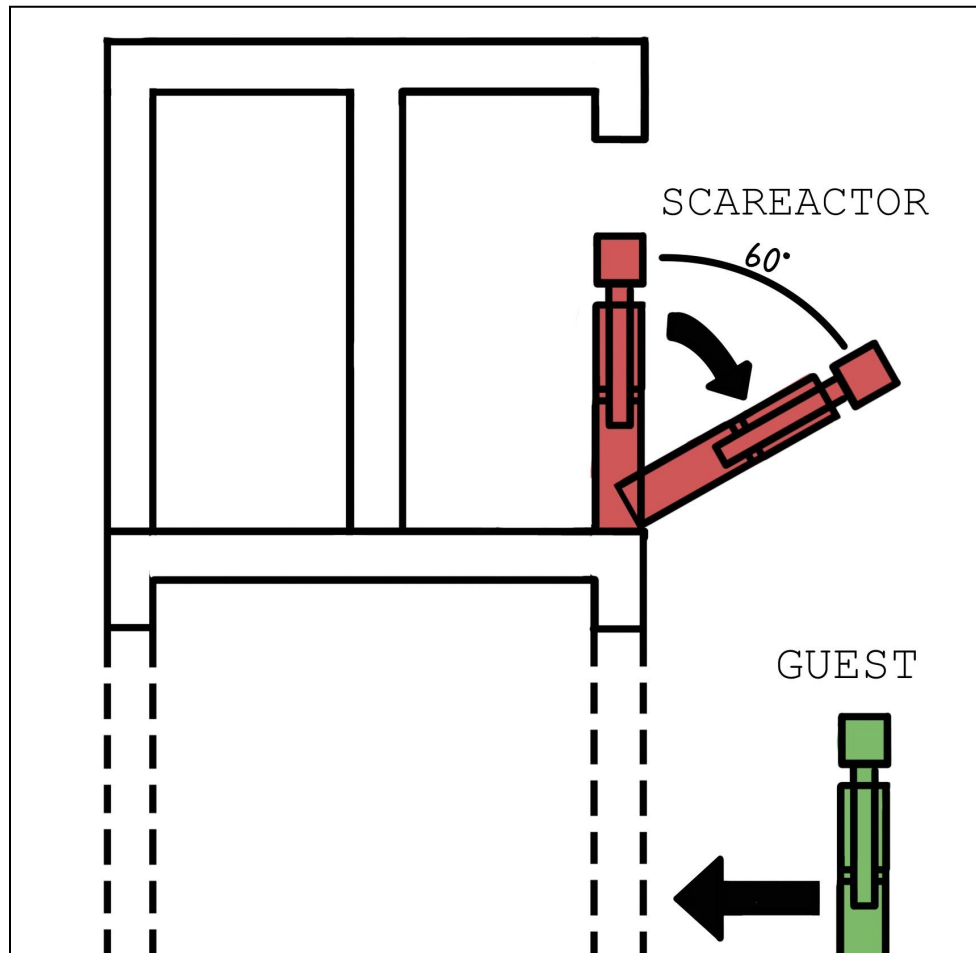
The performer is standing atop a raised platform 10 ft. directly above the guest pathway. The platform is split into two sections separated by a themed wall. The front half, visible from the guest walkway, is where the stunt performer stands. The back half of the platform behind the themed wall is for the maze operator to assist with a performer cast change and standby for the next stunt actor. During a cast change, a red curtain is pulled in front of the performer's platform so no guest's immersion is broken.

Cast changes will happen more frequently than in the rest of the house. The stunt will switch out every 15 minutes, rotating between 3 different performers. Each performer will spend 15 minutes performing the stunt and 30 minutes on break. This way each performer is able to give their all and guests can have the best experience possible.



The stunt begins with the performer twitching and grabbing at the ropes that surround them. The actor's feet are strapped onto hinges that are bolted into the floor a few inches from the edge. This allows the stunt scareactor to fall over guests but prevents

their feet from leaving the platform. They lean forward and fall off the platform at a maximum 60-degree angle over guests. The performer stays nearly horizontal and reaches at guests for a few seconds then is reeled back to a standing position using a winch mechanism.



Two bungee cables, each having a capacity of 1000 lbs, connect to the performer's harness. This ensures a safety factor of 10:1 and avoids a single point of failure allowing for any performer under 200 pounds to perform the stunt safely as per the ANSI E1.43 2016 Entertainment Technology Performer Flying Standard.

In the chance of an emergency, the scareactor attendant will assist the stunt performer in removing them from the stunt equipment. They will make their way down the stairs and through the nearest exit. This emergency action plan will be practiced frequently

so if a real emergency does happen, everyone can make it out safely and in a timely manner.

Due to the complicated nature of the stunt, the stunt scareactors will have extra practice time. They will arrive 45 minutes before the rest of the haunt's scareactors. During this practice time, they will go over set up, cast changes, and performing the stunt alongside the scareactor attendants. As well as practicing the emergency action plan at least once. This dedicated rehearsal time ensures that each scareactor will have plenty of time to perfect their scare and each attendant will know how to assist the scareactors.

OSHA laws acknowledge aesthetics onstage during a performance with an audience allowing for some leeway in standard safety regulation, however, this does not apply when the house is not running. When the haunt is not in operation, a railing is placed in front of the opening where the stunt scareactor falls to ensure the safety of any crew members that walk past during non-operating hours.