



Department of Energy, Mines,  
Industry Regulation and Safety  
Energy Policy WA

# • Driving Western Australia's energy transition

2025 Wheatbelt Futures Forum

Jai Thomas, A/Director General  
Department of Energy, Mines, Industry Regulation and Safety

2<sup>nd</sup> May 2025



# Acknowledgement of Country

We respectfully acknowledge Aboriginal peoples as being the Traditional Custodians of Western Australia. We acknowledge the enduring connection Aboriginal people continue to share with the land, sea, and sky through both their ancestral ties and custodianship to Country. We pay our respect to Elders both past and present, and acknowledge the value brought to our department through the collective contribution of Aboriginal and Torres Strait Islander peoples across Western Australia.





# ● Demand for energy is growing at pace

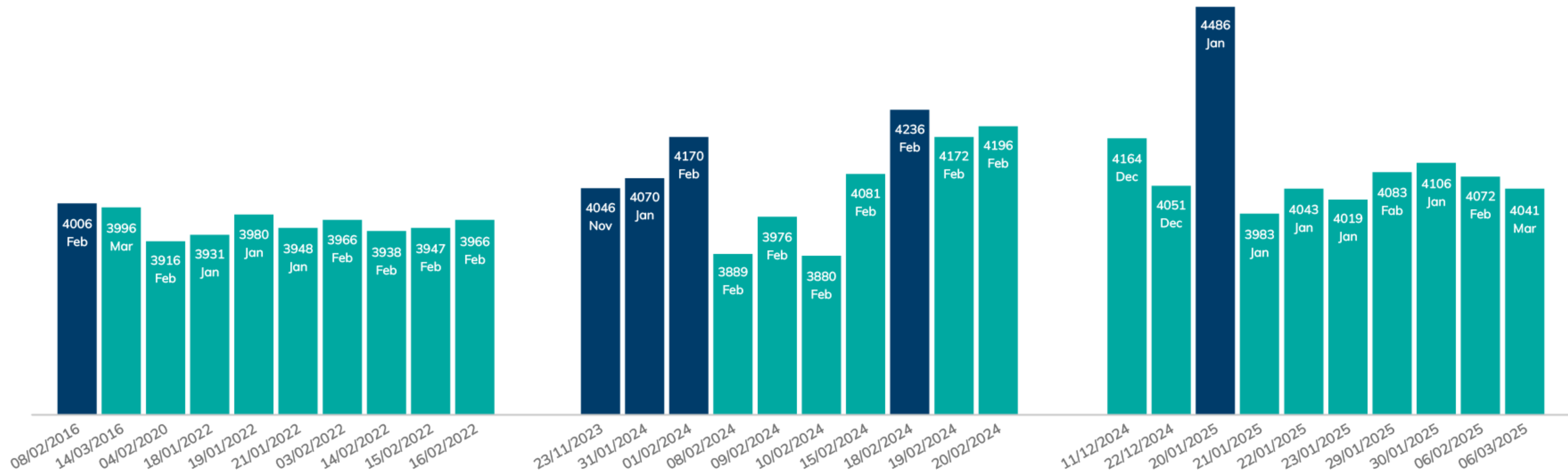
## Top 10 Peak SWIS Demand Days

■ New Peak Demand Record  
 ■ Top 10 Peak Demand Day

2006-07 to 2022-23

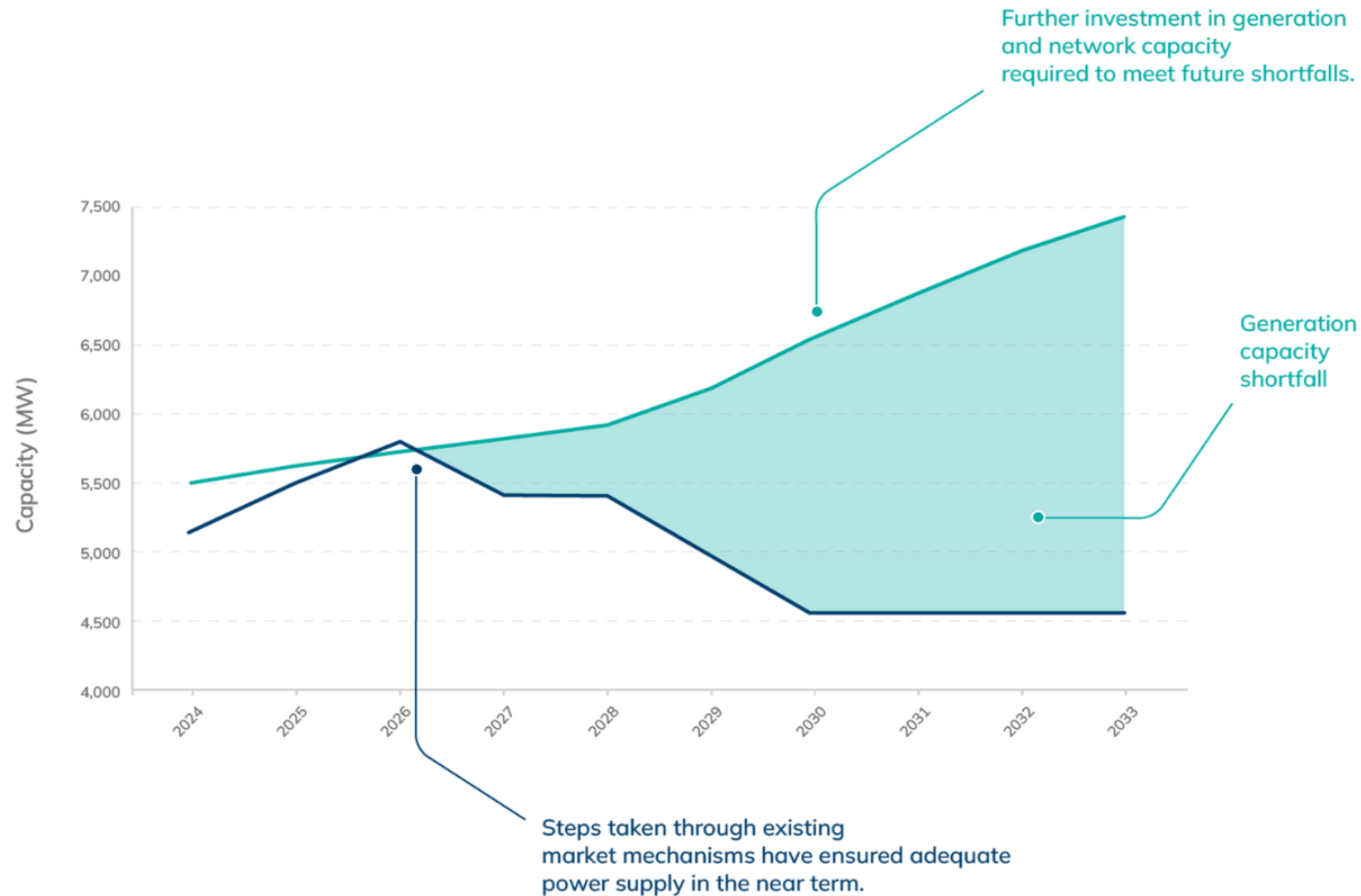
2023-24

2025-26



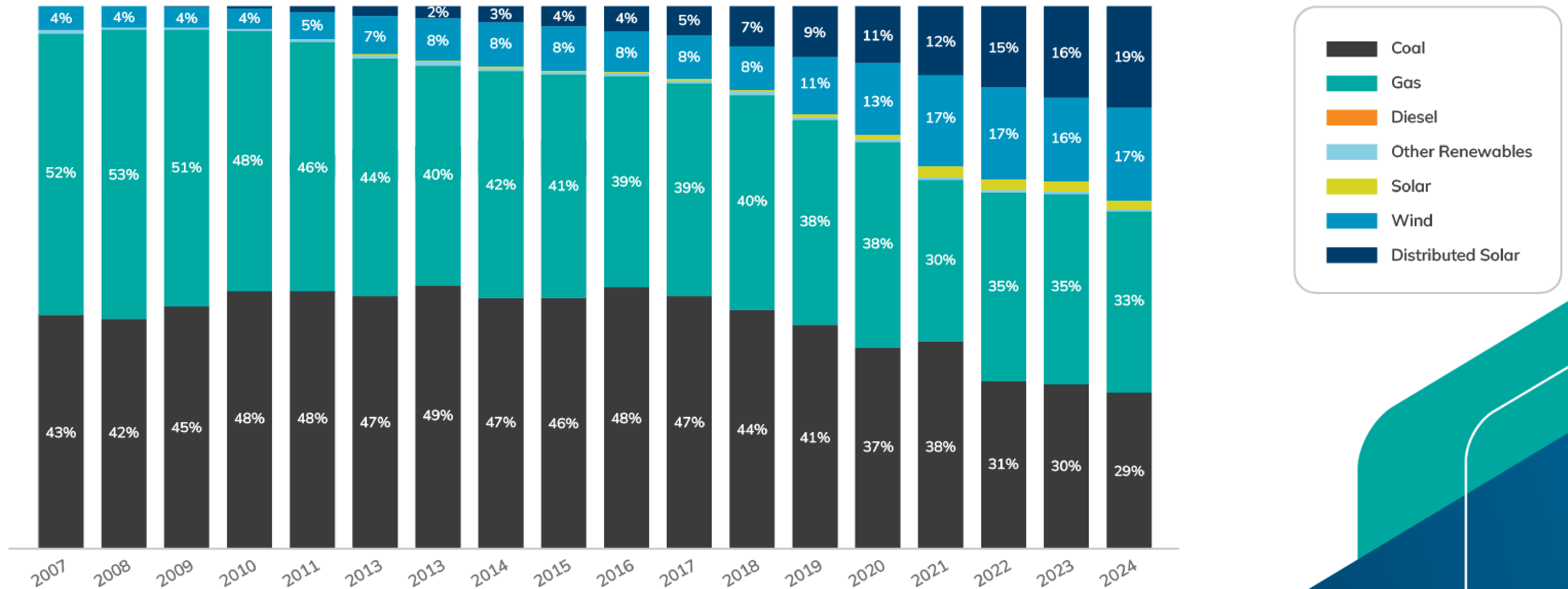
# 2030 coal phase-out: challenge & opportunity

Generation Capacity Shortfall, 2024 - 2033



# • The way we generate electricity is changing:

SWIS Generation Output (%) by Calendar Year & Fuel





# Operational and future projects

We already know that the Wheatbelt hosts world class energy resources.

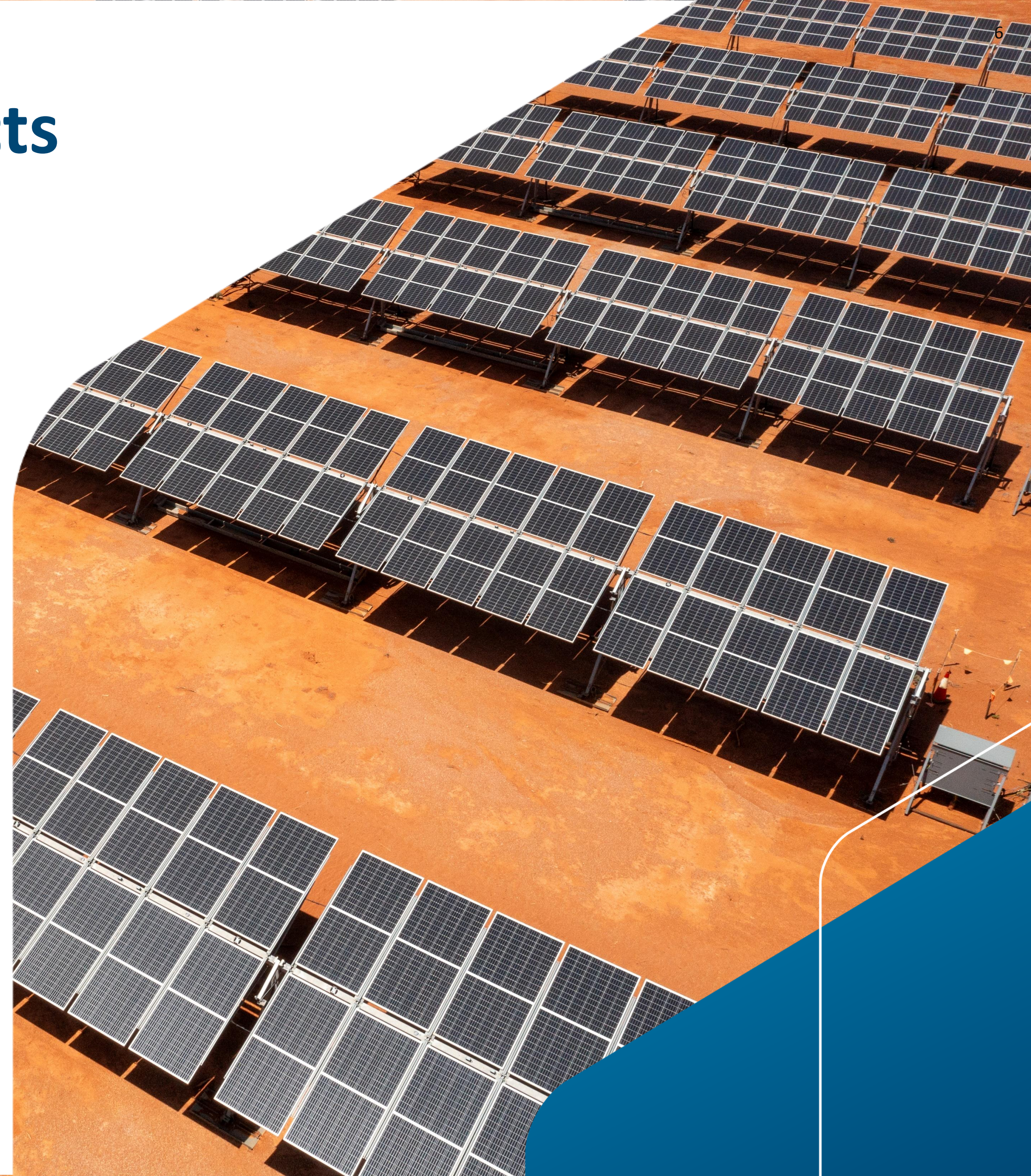
There are a handful of projects already operating in the region, with more in the pipeline.

## Operational projects include:

- Collgar Wind Farm
- Emu Downs Wind Farm
- Cunderdin Hybrid Solar-Battery Facility

## Future projects include:

- Kulin West Wind Farm
- Walebing Wind Farm
- Bellwether Wind Farm





# • New transmission:

Connecting generation to demand

The State Government has made significant investments in transmission infrastructure in the SWIS, including:

- An initial \$126 million in funding for planning works in May 2023.
- A commitment of \$708 million in November 2023, including \$575 million targeted specifically at growing network capacity through *Clean Energy Link – North*.
- An additional \$324 million for further planning/scoping in May 2024.

Growing our transmission network is a key component of the energy transition within the SWIS.

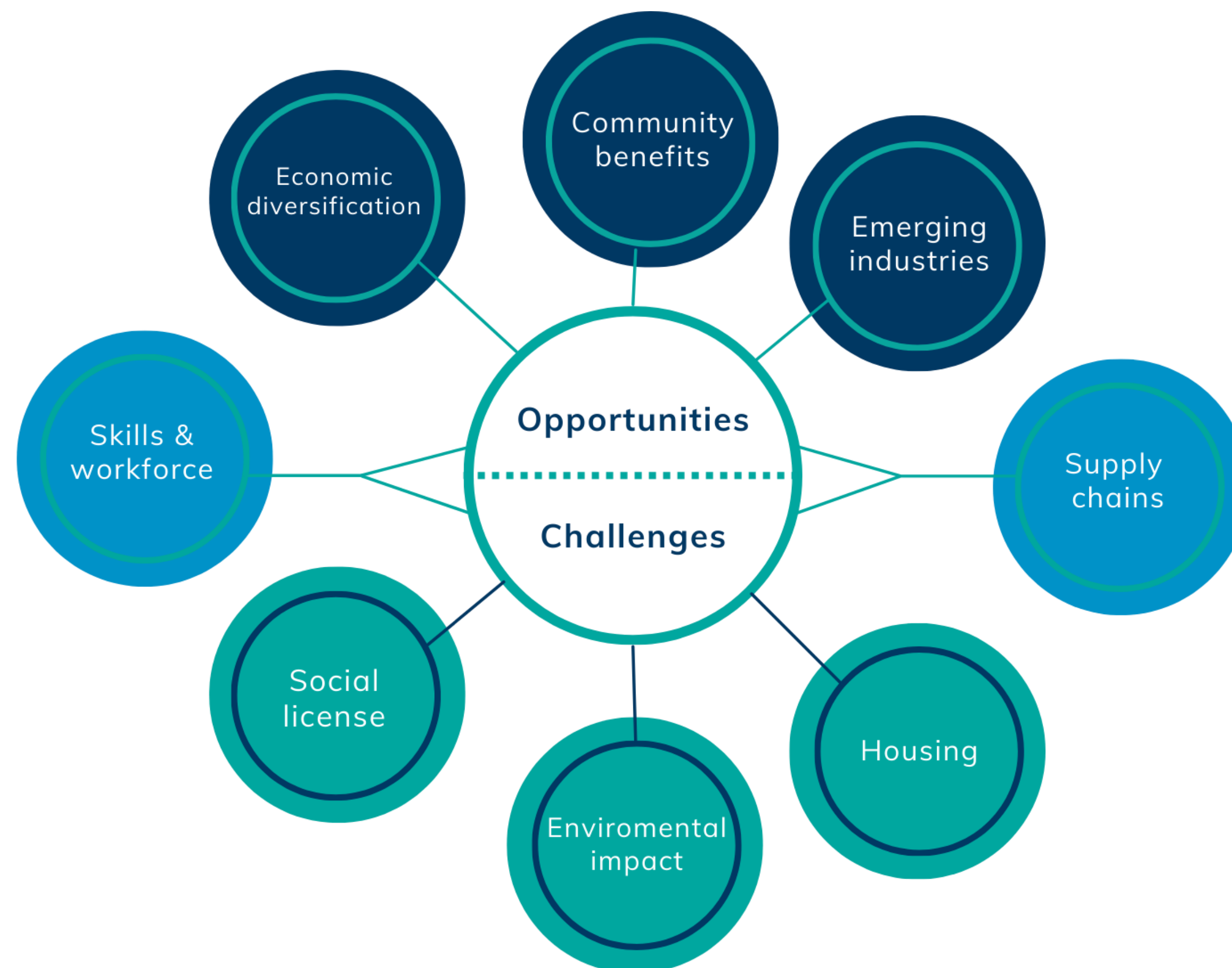




# Challenges & Opportunities

Many of the new renewable energy generation and storage projects we need will be built in regional locations, often in areas that are unfamiliar with hosting large-scale energy infrastructure projects.

We know this will create both challenges and significant opportunities in regional WA.





# —• New ways of working: PoweringWA

PoweringWA has been established by the State Government to coordinate and facilitate the delivery of the new electricity infrastructure and projects we need to decarbonise our energy systems.

PoweringWA is:

- Working collaboratively across Government
- Working with national organisations and Federal Government agencies like the Clean Energy Council
- Working to engage with Local Government Authorities
- Meeting with project proponents
- Developing resources around best practise engagement and social license



## PoweringWA







Department of Energy, Mines,  
Industry Regulation and Safety  
Energy Policy WA

# Questions

2<sup>nd</sup> May 2025