



Geneva Airport to La Tzoumaz by Public Transport

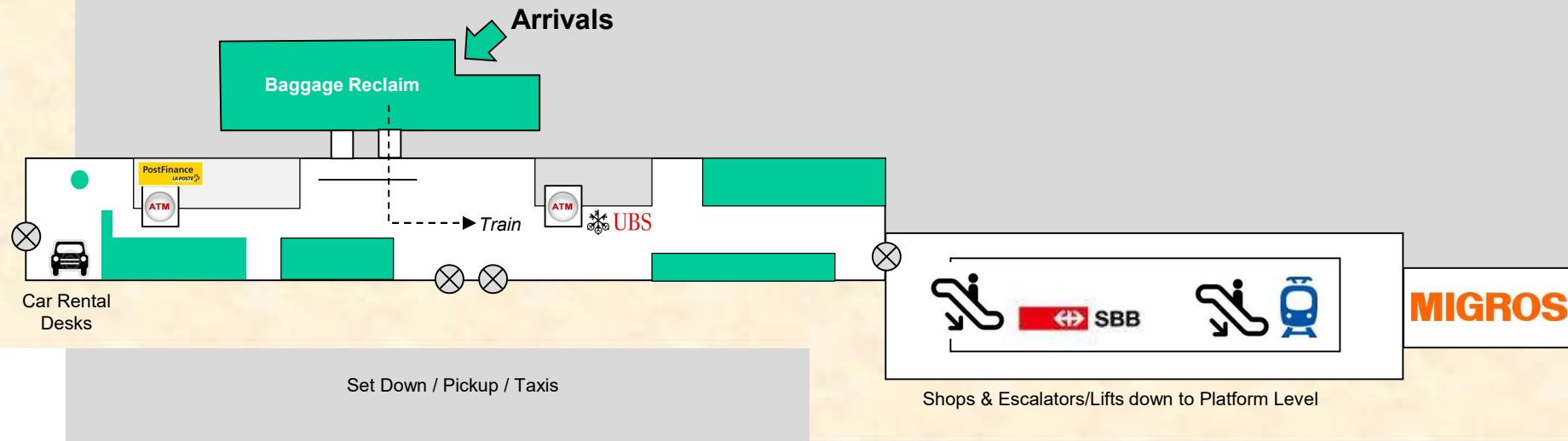
Train, Télépherique and PostBus to La Tzoumaz Centre

(LTZ3 – 1.1.20)

This guide can also be downloaded from the website
'www.laforet35.ch'

All information provided without liability and subject to change after publication.

Geneva Airport Arrivals: Hire Car Pickup & Trains



For trains: Turn *left* out of the Arrivals gate. Walk along the hall to the end, then through the revolving doors, down the escalator. The SBB train ticket office is then on your right. If you have a ticket, go down the escalator onto the platform for the train to Lausanne/Brig.



Normally, you'll be on the inter-city train to Brig, via Geneva, Lausanne and Montreux. You'll usually change to a local train at either Martigny or Sion. Look at www.sbb.ch for timetable information. An advance 'Supersaver' ticket will be a lot cheaper, but as in the UK, is only valid for a specific train time.

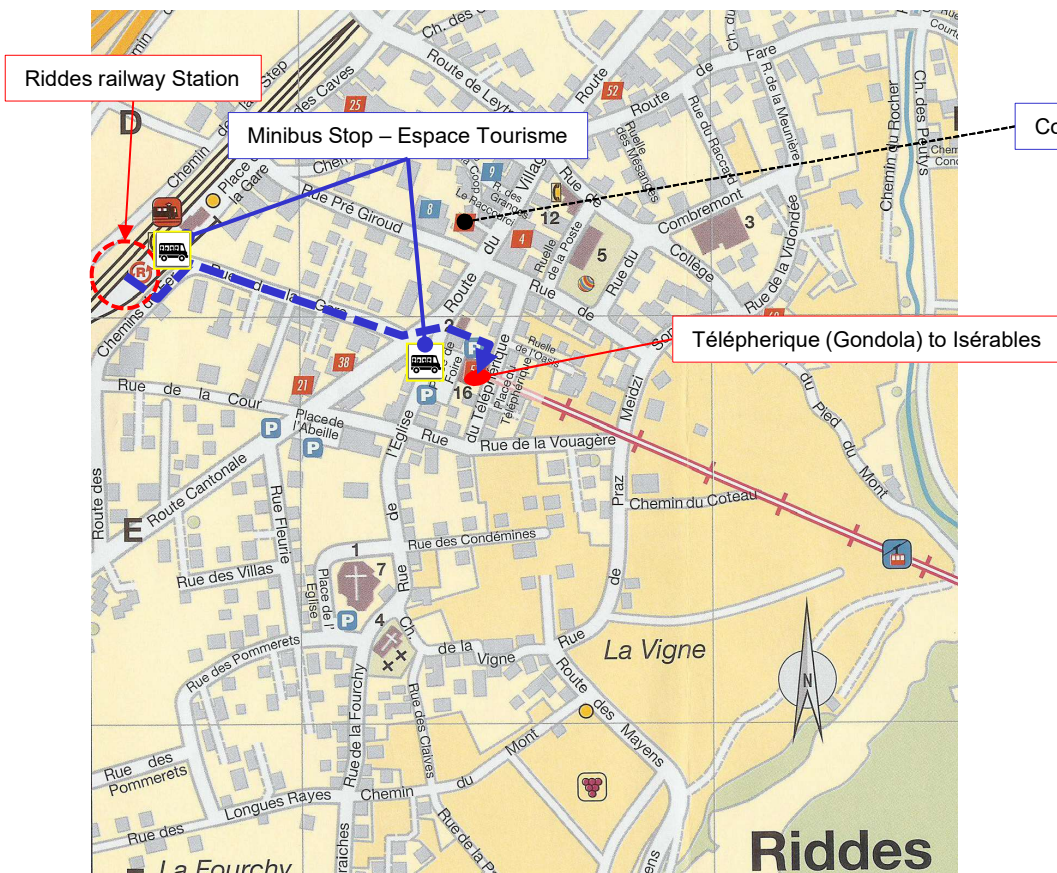
The route is *from* 'Geneve Aeroport' to 'La Tzoumaz (tele.)' usually with a train change at Martigny; walk up to the téléphérique in Riddes, and change to the PostBus in Iséables.



If it's Sunday, and you need to shop, the Migros at the end of the second concourse is one of the few supermarkets that will be open. Most supermarkets and superstores close on Sundays in Switzerland.



If you need cash, there are UBS ATMs (left) towards the train station.



1. At Riddes station:

There is a bus stop and timetable ('horaires') by the platform.

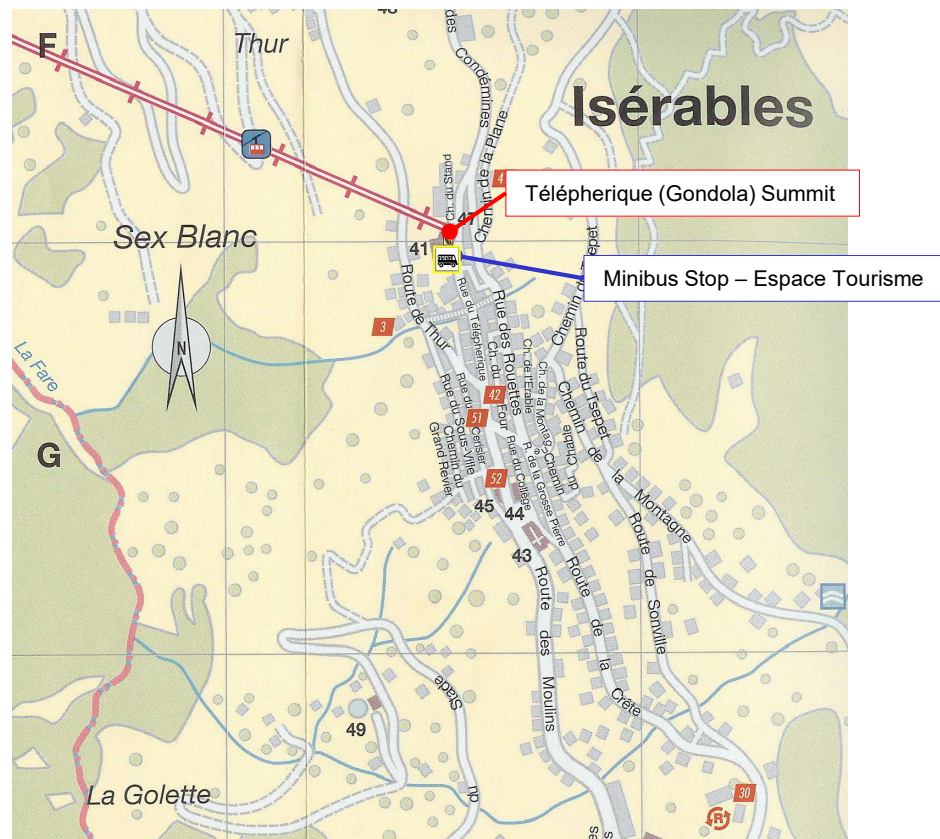
Outside of morning and evening peak time, you may have to walk up to the télépherique (blue dotted line) and get the gondola to Isérables (which is quite impressive).

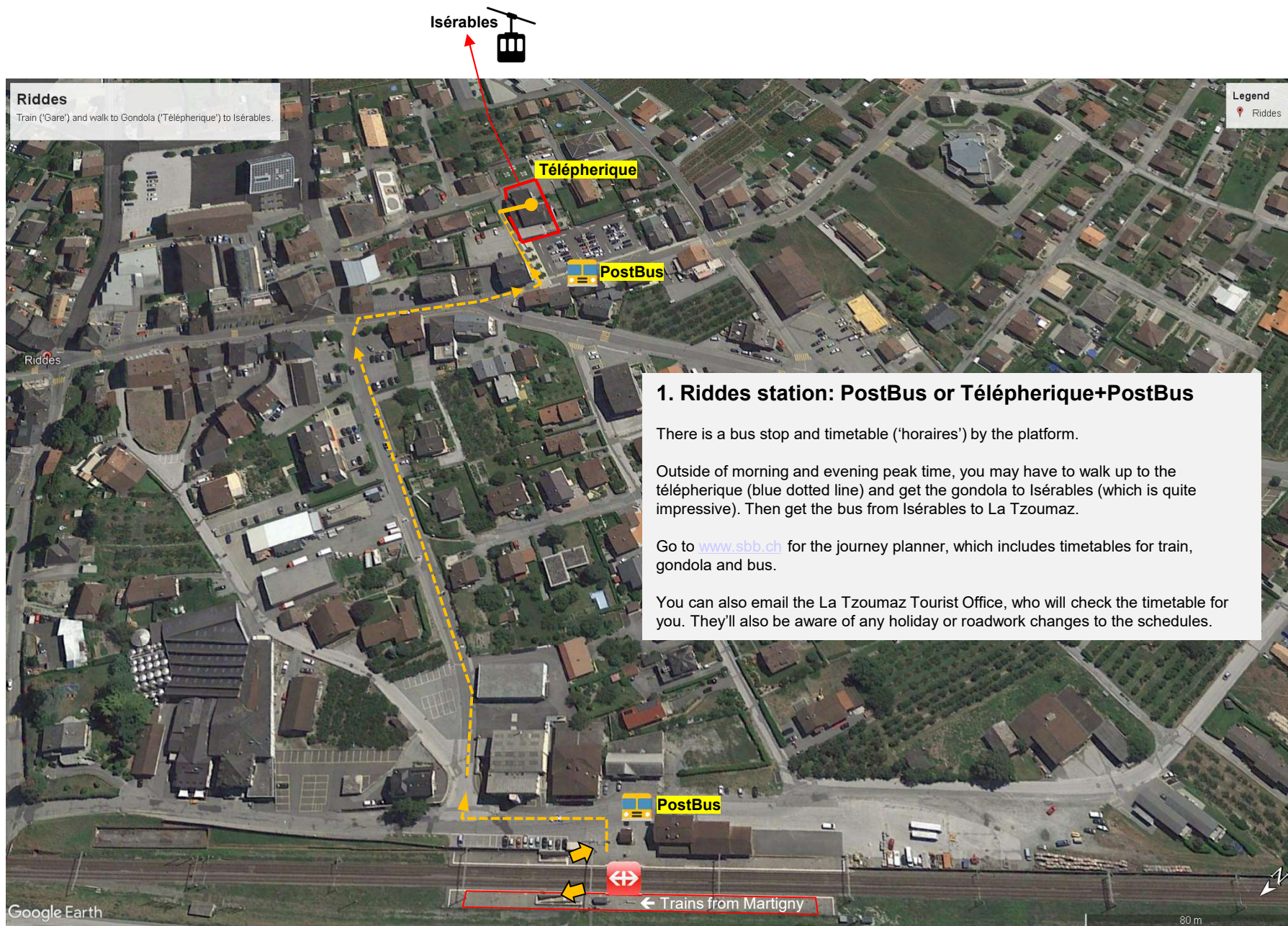
Go to www.sbb.ch for the journey planner, which includes timetables for train, gondola and bus. You can also email the La Tzoumaz Tourist Office, who will check the timetable for you. They'll also be aware of any holiday or roadwork changes to the schedules.

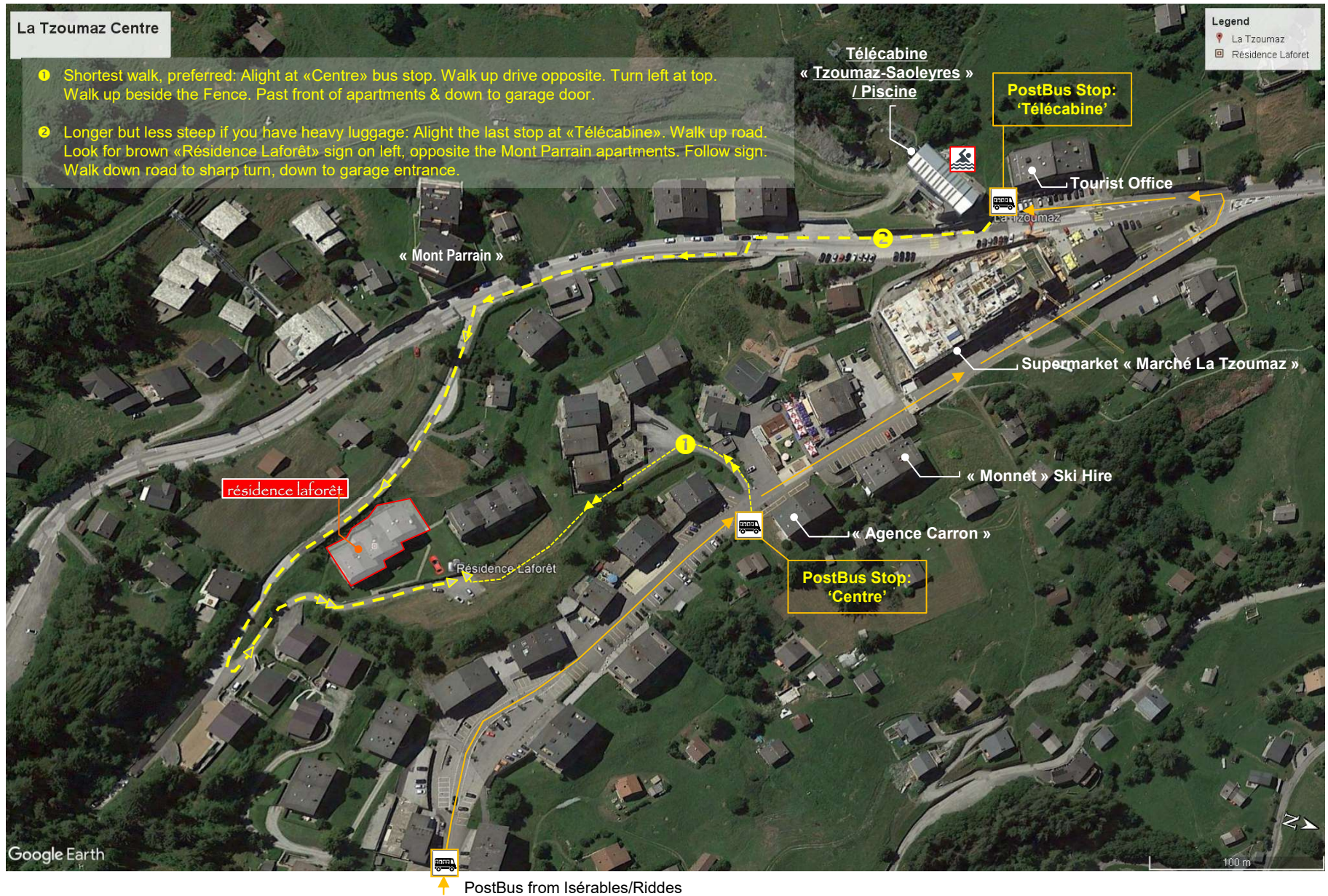
Train / Télépherique / Bus Connections at Riddes & Isérables

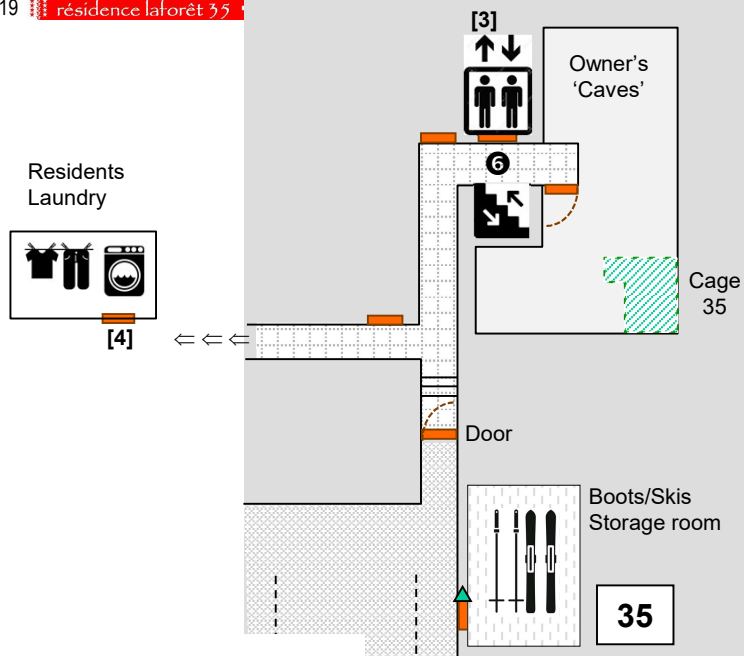
2. At Isérables, the summit of the télépherique:

Turn right out of the station and take the steps down on the right. The bus stop is there. If you have to wait, there's a café/restaurant nearby with a great terrace view of the valley.









Pedestrian Arrival

- ② Walk through pedestrian door (not locked)
Turn left, walk past apt. parking bay '35'
Turn right, go through door, steps to lift

- ⑥ Go up to apartment via lift to 3rd. floor

Key Safe is outside door: enter code
Large key opens apartment

See next sheets for other facilities keys etc.

From Télécabine



Garage Door

Pedestrian Door
(not locked)

From Centre



WHAT THE KEYS GIVE YOU ACCESS TO

- ❶ Opens Garage Door using switch on outside wall
- ❷ Ski/Boot Room Storage – Always LOCK this door
- ❸ Laundry
- ❹ Apartment 35
- ❺ Owners 'cave' storage area*

- ❻ Small Key Opens Owner's cage No.35 then
★Padlock Code = '????'

To exit parking press ❷ on pillar

