



Trains at Geneva Airport Train, Télépherique and Bus to La Tzoumaz Centre

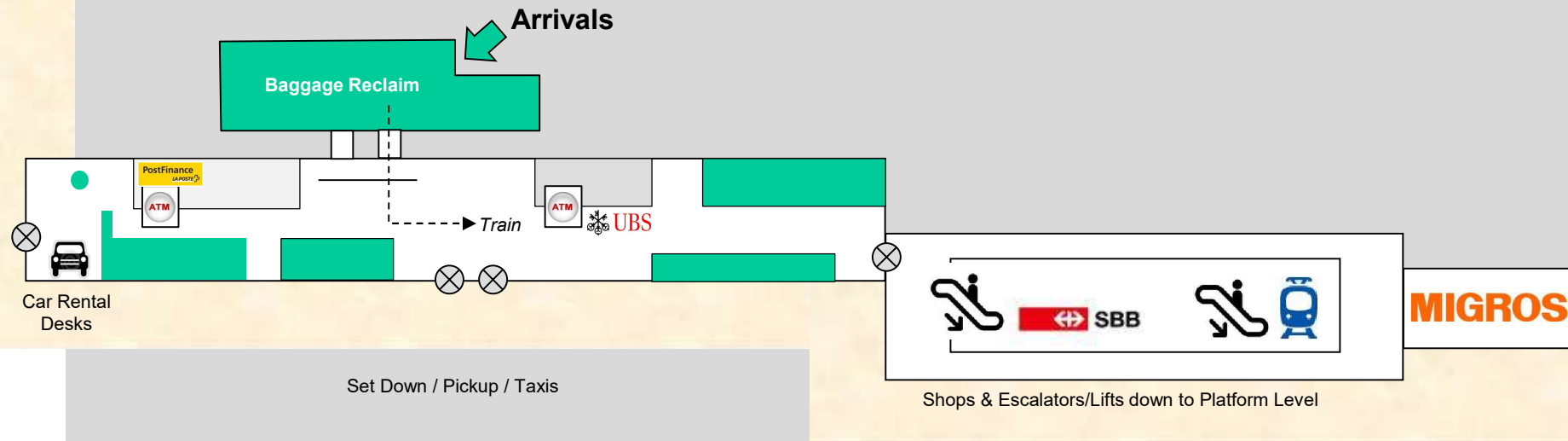
(LTZ3 v4 – 28 Jan 2023)

Satnav / Goggle Earth - Entrance to Underground Car Park at:

Latitude: (Degrees, Minutes, Seconds) 46° 8' 35.92" North (Decimal Degrees: 46.14331111°)
Longitude: (DMS) 7° 14' 10.42" East (DD: 7.23611111°)

Via Michelin: 'La Tzoumaz / Telecabine'
(then 200 metres past telecabine, on left)

Geneva Airport Arrivals: Hire Car Pickup & Trains



For trains: Turn *left* out of the Arrivals gate. Walk along the hall to the end, then through the revolving doors, down the escalator. The SBB train ticket office is then on your right. If you have a ticket, go down the escalator onto the platform for the train to Lausanne/Brig.



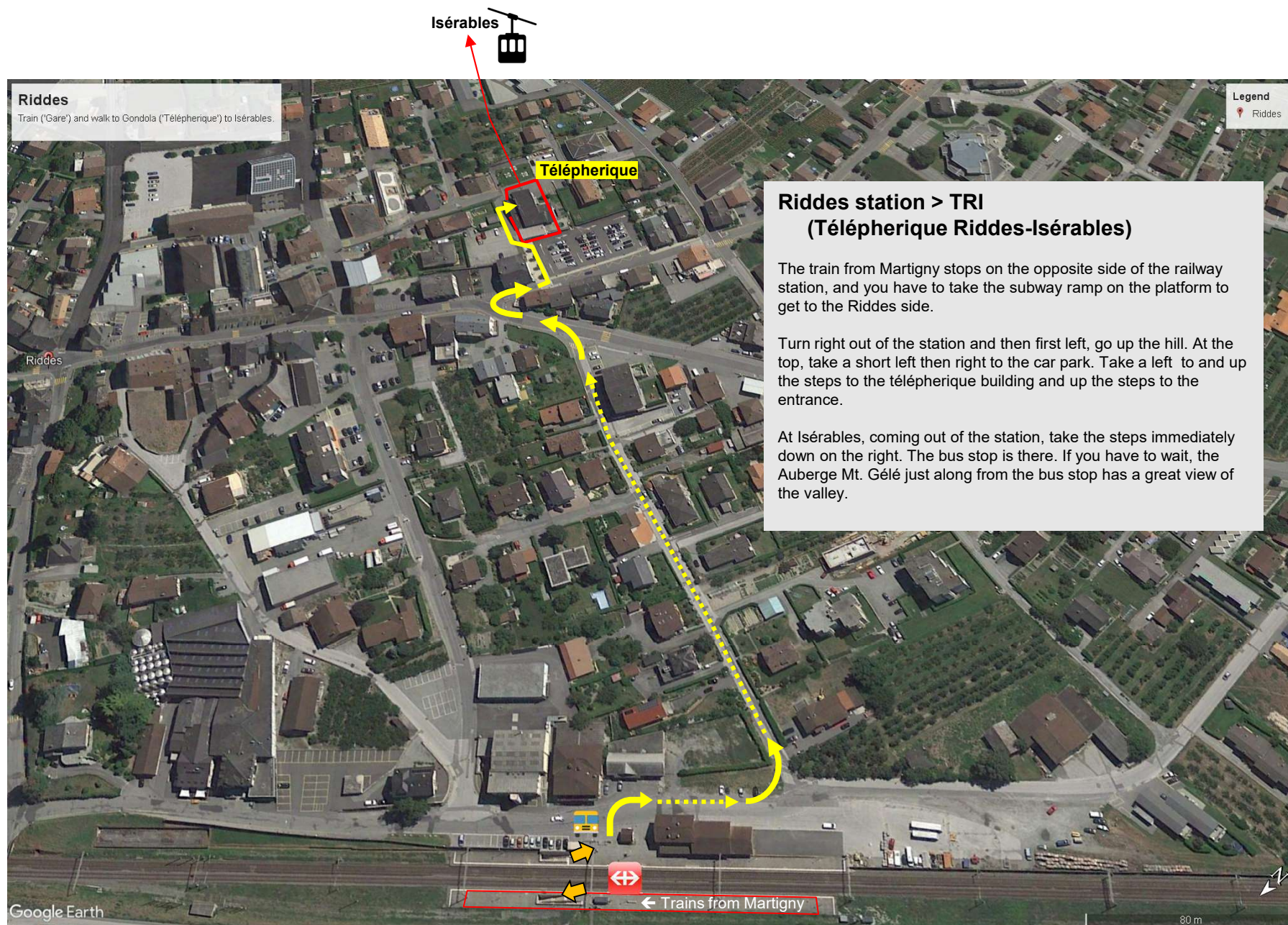
Normally, you'll be on the inter-city train to Brig, via Geneva, Lausanne and Montreux. You'll usually change to a local train at either Martigny or Sion. Look at www.sbb.ch for timetable information. An Interrail 3-journey ticket may be cheaper than a return.

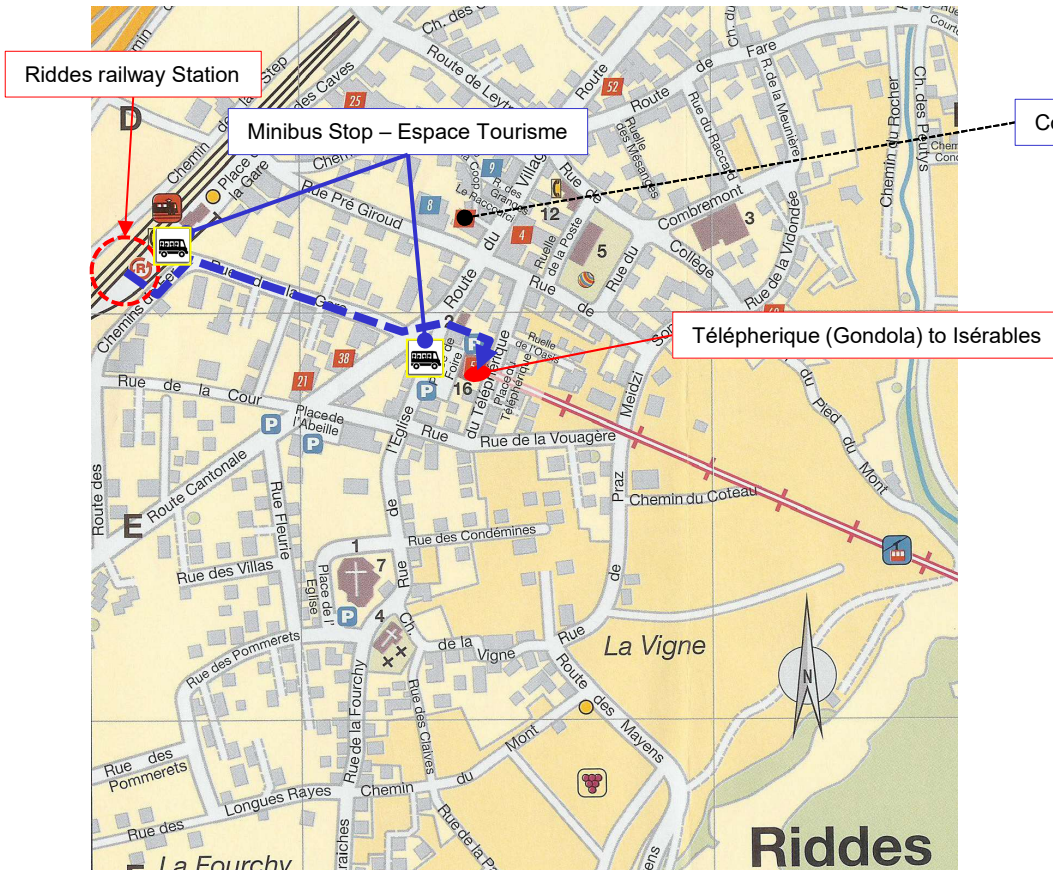


If it's Sunday, and you need to shop, the Migros at the end of the second concourse is one of the few supermarkets that will be open. Most supermarkets and superstores close on Sundays in Switzerland.



If you need cash, there are UBS ATMs (left) towards the train station.





1. At Riddes station:

The train from Martigny stops on the western side of the railway and you have to take the subway on the platform to get to the other side.

Turn right out of the station and then first left, go up the hill. At the top, take a quick left then right to the car park. Take a left and up the steps to the télépherique building and up the steps to the entrance.

At Iséables, coming out of the station, take the steps down on the right. The bus stop is there. If you have to wait, the Auberge Mt. Gélé just along from the bus stop has a great view of the valley.

Train / Télépherique / Bus Connections at Riddes & Iséables

2. At Iséables, the summit of the télépherique:

Turn right out of the station and take the steps down on the right. The bus stop is there. If you have to wait, the Auberge Mt. Gélé by the bus stop has a great view of the valley.

