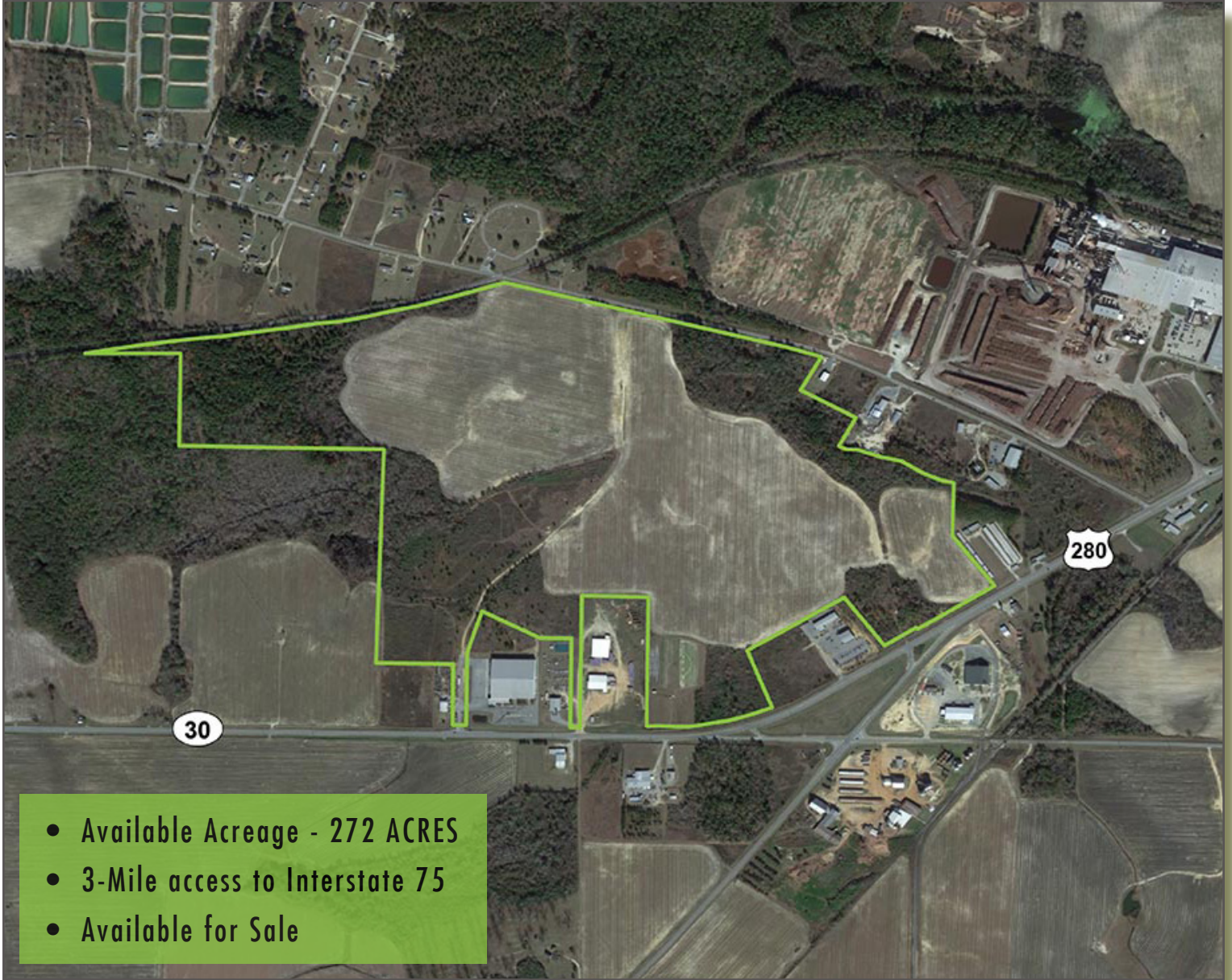


AVAILABLE

FISH HATCHERY RD & US HWY 280, CORDELE, GA 31015

## UIDC FISH HATCHERY RD SITE



- Available Acreage - 272 ACRES
- 3-Mile access to Interstate 75
- Available for Sale

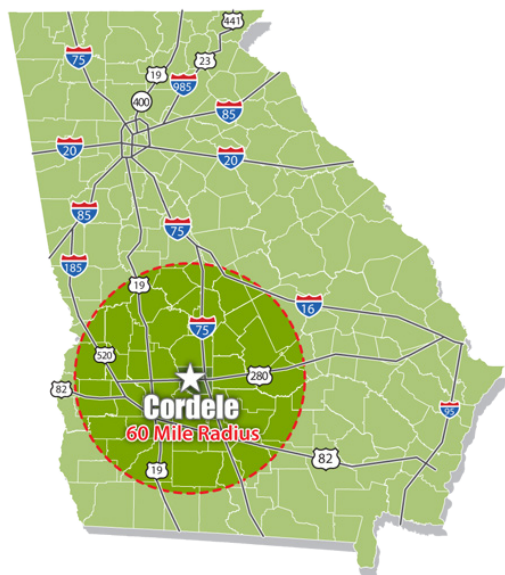
**CORDELE-CRISP COUNTY**  
**INDUSTRIAL DEVELOPMENT COUNCIL**  
*Planting Seeds For Prosperity*

**GRANT BUCKLEY**  
Executive Director  
Cordele-Crisp County IDC  
(229) 273-9570  
gcbuckley@crispidc.com



# AVAILABLE

## UIDC FISH HATCHERY RD. SITE FISH HATCHERY RD & US HWY 280, CORDELE, GA 31015



### PROPERTY HIGHLIGHTS

- » 272 Acres
- » Property available for sale
- » Ownership: United Industrial Development Council
- » Zoning: Industrial
- » Located in Federal Opportunity Zone

### DEMOGRAPHIC SUMMARY

#### Cordele - Crisp County 60 mile radius

Population	771,937
Daytime Population	746,302
Available Work Force*	457,728
Median Household Income	\$50,652
Median Age	37.9

Source: ESRI 2022

\*Source: JobsEQ 2022Q1

### UTILITIES

- » **Natural Gas:** City of Cordele
- » **Public Water:** City of Cordele
- » **Sewer Service:** City of Cordele
- » **Electric Service:** Crisp County Power Commission
- » **Rail:** Heart of Georgia Railroad

### LOGISTICS

#### Airports

Crisp County - Cordele Airport.....	3.6 mi
Southwest GA Regional Airport .....	42 mi
Atl. Hartsfield-Jackson Int'l Airport.....	142 mi

#### Highways & Interstates

US Highway 280.....	0 mi
Interstate 75.....	4.5 mi
Interstate 10.....	125 mi

#### Ports

Cordele Inland Port.....	5 mi
Port of Savannah.....	184 mi
Port of Jacksonville.....	210 mi

### KEY EMPLOYERS IN CRISP COUNTY

EMPLOYERS	INDUSTRY	EMPLOYEES
Marvair Division of Airxcel, Inc.	Heating and Cooling Equipment Manufacturings	185 FT + 59 Contract
Norbord Georgia, LLC	Oriented Strand Board	130 FT
Helena Industries, Inc.	Pesticide and Other Agricultural Chemical Manufacturing	154 FT + 70 Contract
Goldens' Foundry and Machine Co.	Metal Machining and Iron Castings	136 FT
Big Tex Trailer Manufacturing, Inc.	Cargo Trailers	130 FT

Source: Georgia Department of Labor; DatabaseUSA