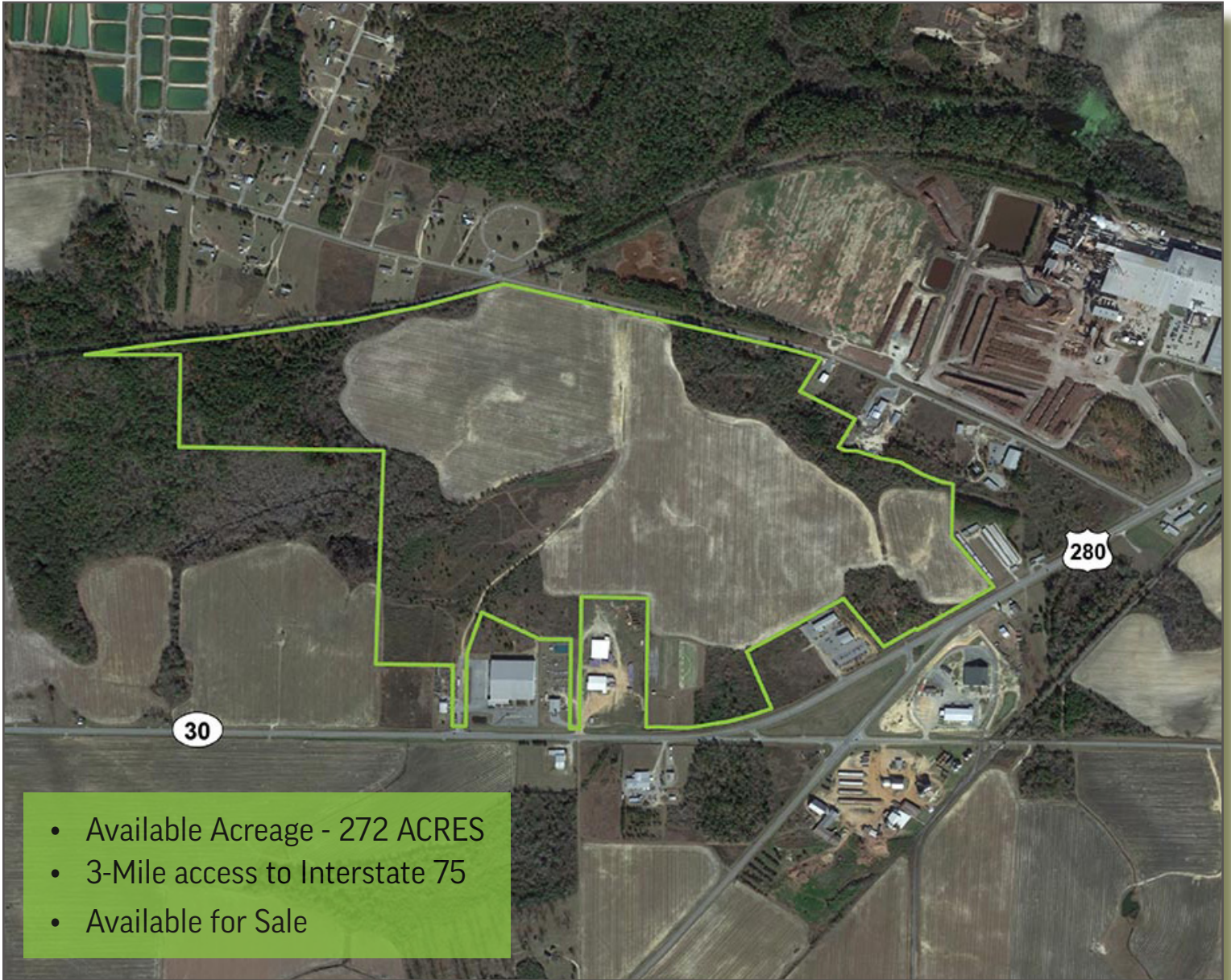


AVAILABLE

FISH HATCHERY RD & US HWY 280, CORDELE, GA 31015

UIDC FISH HATCHERY RD SITE



- Available Acreage - 272 ACRES
- 3-Mile access to Interstate 75
- Available for Sale

CORDELE-CRISP COUNTY
INDUSTRIAL DEVELOPMENT COUNCIL
Planting Seeds For Prosperity

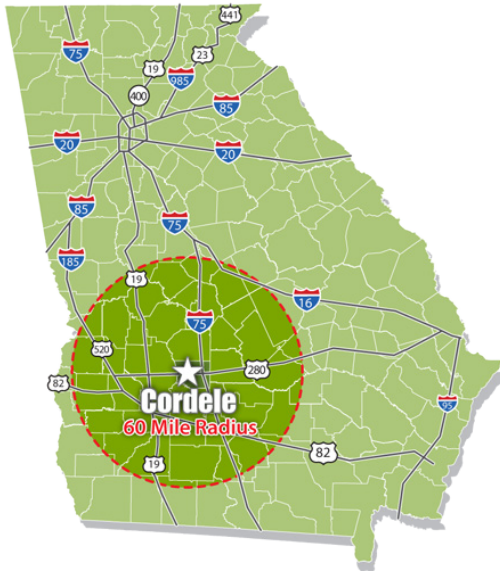
GRANT BUCKLEY
Executive Director
Cordele-Crisp County IDC
(229) 273-9570
gcbuckley@crispidc.com

 **ECG**
Economic Development Partner

AVAILABLE

UIDC FISH HATCHERY RD. SITE

FISH HATCHERY RD & US HWY 280,
CORDELE, GA 31015



PROPERTY HIGHLIGHTS

- » 272 Acres
- » Property available for sale
- » Ownership: United Industrial Development Council
- » Zoning: Industrial
- » Located in Federal Opportunity Zone

DEMOGRAPHIC SUMMARY

Cordele - Crisp County 60 mile radius

Population	805,800
Labor Force	349,600
Median Household Income	\$57,800
Median Age	39.7

Source: ESRI 2025

UTILITIES

- » **Natural Gas:** City of Cordele
- » **Public Water:** City of Cordele
- » **Sewer Service:** City of Cordele
- » **Electric Service:** Crisp County Power Commission

LOGISTICS

Airports

Crisp County - Cordele Airport.....	3.6 mi
Southwest GA Regional Airport	42 mi
Atl. Hartsfield-Jackson Int'l Airport.....	142 mi

Highways & Interstates

US Highway 280.....	0 mi
Interstate 75.....	4.5 mi
Interstate 10.....	125 mi

Ports

Cordele Inland Port.....	5 mi
Port of Savannah.....	184 mi
Port of Jacksonville.....	210 mi

KEY INDUSTRIES IN CRISP COUNTY

EMPLOYERS	SPECIALTIES	EMPLOYEEES
Griffin Grading & Concrete	Site Preparation Contractors	250
Marvail, division of AirX Climate Solutions	Heating and Cooling Equipment Manufacturings	240
Harris American	Motor and Generator Manufacturing	165
West Fraser	Sawmills	160
Helena Industries, Inc	Pesticide and Other Agricultural Chemical Manufacturing	160
Goldens Foundry	Iron Foundries	85

Source: Georgia Department of Labor; DatabaseUSA