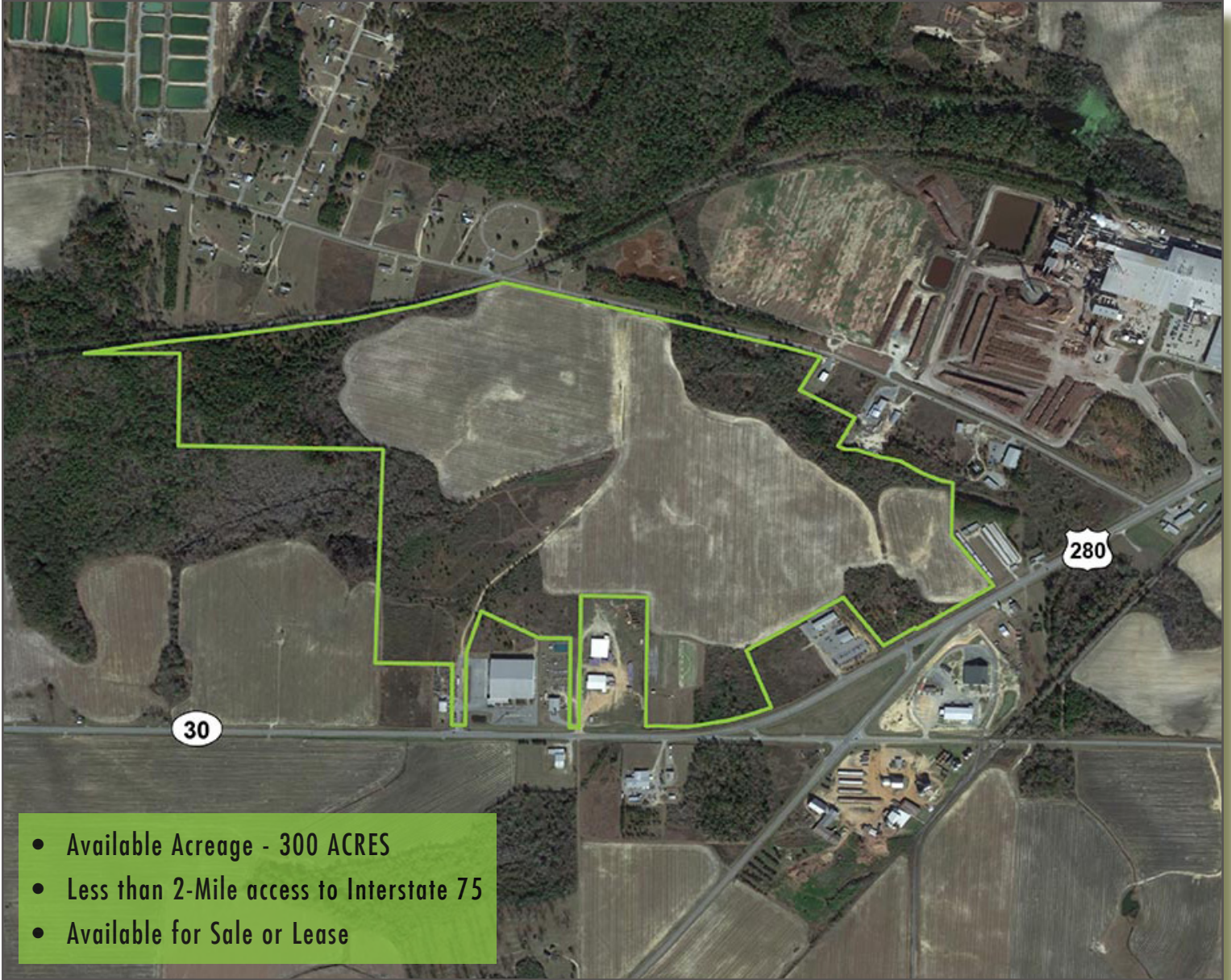


AVAILABLE

FISH HATCHERY RD & US HWY 280, CORDELE, GA 31015

# UIDC INDUSTRIAL PARK



- Available Acreage - 300 ACRES
- Less than 2-Mile access to Interstate 75
- Available for Sale or Lease

**CORDELE-CRISP COUNTY**  
**INDUSTRIAL DEVELOPMENT COUNCIL**  
*Planting Seeds For Prosperity*

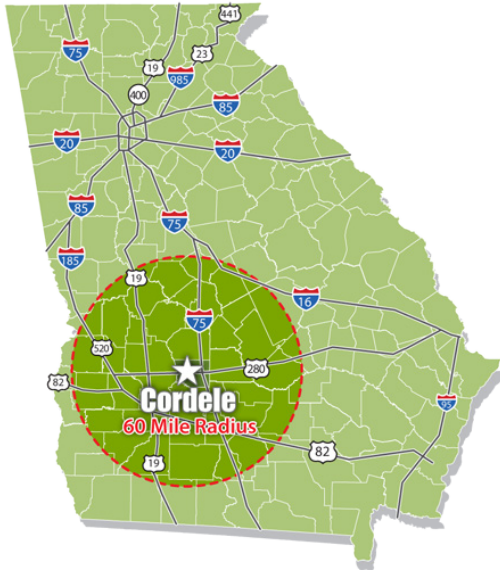
**GRANT BUCKLEY**  
Executive Director  
Cordele-Crisp County IDC  
(229) 273-9570  
gcbuckley@crispidc.com

**ECG**  
Economic Development Partner

# AVAILABLE

# UIDC INDUSTRIAL PARK

FISH HATCHERY RD & US HWY 280, CORDELE, GA 31015



## PROPERTY HIGHLIGHTS

- » 300 Acres
- » Property available for sale or lease
- » Ownership: United Industrial Development Council
- » Zoning: Industrial
- » Located in Federal Opportunity Zone

## DEMOGRAPHIC SUMMARY

### Cordele - Crisp County 60 mile radius

Population	797,168
Daytime Population	770,243
Available Work Force*	344,489
Median Household Income	\$42,298
Median Age	37.5

Source: ESRI 2019  
 \*Available Workforce consists of the employed and unemployed/seeking work populations.

## UTILITIES

- » **Natural Gas:** City of Cordele
- » **Public Water:** City of Cordele
- » **Sewer Service:** City of Cordele
- » **Electric Service:** Crisp County Power Commission
- » **Rail:** Heart of Georgia Railroad

## KEY EMPLOYERS IN CRISP COUNTY

EMPLOYERS	INDUSTRY	EMPLOYEES
Marvair Division of Airxcel, Inc.	Heating and Cooling Equipment Manufacturings	185 FT + 59 Contract
Norbord Georgia, LLC	Oriented Strand Board	130 FT
Helena Industries, Inc.	Pesticide and Other Agricultural Chemical Manufacturing	154 FT + 70 Contract
Goldens' Foundry and Machine Co.	Metal Machining and Iron Castings	136 FT
Big Tex Trailer Manufacturing, Inc.	Cargo Trailers	130 FT

Source: Georgia Department of Labor; DatabaseUSA

## LOGISTICS

- Airports**
- Crisp County - Cordele Airport..... 3.6 mi
  - Southwest GA Regional Airport ..... 42 mi
  - Atl. Hartsfield-Jackson Int'l Airport..... 142 mi
- Highways & Interstates**
- US Highway 280..... 0 mi
  - Interstate 75..... 4.5 mi
  - Interstate 10..... 125 mi
- Ports**
- Cordele Inland Port..... 5 mi
  - Port of Savannah..... 184 mi
  - Port of Jacksonville..... 210 mi