

Exhaust rail system 920 for stationary vehicles



Easy to handle systems for all types of workshops. Consists of a basic rail system which is completed with an exhaust extraction kit. Very high extraction efficiency. One extraction unit can serve several workbays. Extraction units are easy to move, thanks to light-weight material and ball bearing wheels. Two 400 units serve cars with twin exhaust pipes. Manual disconnection of exhaust nozzles.

For choice of nozzles, see Exhaust nozzles.

Compact, modern design

Easy to position and move by hand

Optional automatic damper for airflow control











Quick and simple installation - less ducting work, reduces cost

- Compact, modern design
- Easy to position and move by hand
- Automatic damper for airflow control
- Quick and simple installation - less ducting work, reduces cost

Product name	Exhaust rail system 920 for stationary vehicles
Installation	Indoor
Material	Rail: Aluminium Sealing lips: EPDM rubber Trolley: Glassfibre Composite
Operating Temperature	Max 150 ° C (300 ° F)
Colour	Grey



Exhaust rail system 920 for stationary vehicles

Image	Description	Type of hose ¹	Diameter, hose (in)	Hose length (ft)	Model
	Extraction unit with nozzle storage and damper	NR-CP	4	25	20915220*
	Extraction unit with nozzle storage and damper	NTP	4	16	20915120*
	Extraction unit with balancer, damper and hose suspension	NTP	4	16	20915620*
	Extraction unit with balancer, damper and hose suspension	NR-CP	4	16	20915520*
	Trolley 1500 extraction unit with balancer, damper and hose suspension	NR-CP	6	16	20914020**
	Trolley 1500 extraction unit with nozzle storage and damper	NR-CP	6	16	20914320**
	Extraction unit 920/400 for Stationary vehicles to be used with a Ø100 hose.				20919320
	Extraction unit 920/400 with balancer for stationary vehicles to be used with a Ø100 hose.				20919220
	Extraction unit 920/1500 with balancer for stationary vehicles to be used with a Ø150 hose.				20919120
	Extraction unit 920/1500 for stationary vehicles to be used with a Ø150 hose.				20919020

*For cars

**For trucks

¹ See table below

Hose type	Specification	Temperature range, °C	Hose fittings in free hose end, distribution hose	Hose fitting on free hose end, inlet hose	Hose connection on reel, distribution hose	Hose connection on reel, inlet hose
NRCP	Polyester fabric, EPDM/PP coated. Helix in Polyester with EPDM cover. Max bending radius 22.5cm (inside)	-40 to +150 Deg. C (Intermittent +170 Deg. C)				
NTP		up to 150				

Exhaust rail system 920 for stationary vehicles

Accessory		Part No
	Exhaust rail 920 L= 2.5 m (8')	20916020*
	Exhaust rail 920 L= 5.0 m (17')	20916120*
	Exhaust rail 920 L= 7.5 m (25')	20916220*
	Exhaust rail 920 L= 10.0 m (33')	20916320*
	Exhaust rail 920 L= 12.5 m (41')	20916420*
	Exhaust rail 920 L= 15.0 m (50')	20916520*
	Exhaust rail 920 L= 32.5m (106')	20918220*
	Exhaust rail 920 L= 35.0 m (115')	20917220*
	Exhaust rail 920 L= 40.0 m (132')	20917320*
	Exhaust rail 920 L= 45.0 m (148')	20917420*
	Exhaust rail 920 L= 50.0 m (165')	20917520*
	Exhaust hose nr-cp l=5m (16') d=102mm (4'')	20807962
	Exhaust hose nr-cp l=10m (33') d=102mm (4'')	20808162
	Exhaust hose nr-cp l=5m (16') d=127mm (5'')	20808362
	Exhaust hose nr-cp l=5m (16') d=152mm (6'')	20808762
	Exhaust hose nr-cp l=10m d=152mm	20808962
	Exhaust hose nr-cp l=2.5m d=100mm	20820362
	Exhaust hose nr-cp l=5m d=100mm	20820462
	Exhaust hose nr-cp l=7.5m d=100mm	20820562
	Exhaust hose nr-cp l=10m d=100mm	20820662
	Exhaust hose nr-cp l=2.5m d=125mm	20820762
	Exhaust hose nr-cp l=5m (16') d=125mm (5'')	20820862

Exhaust rail system 920 for stationary vehicles

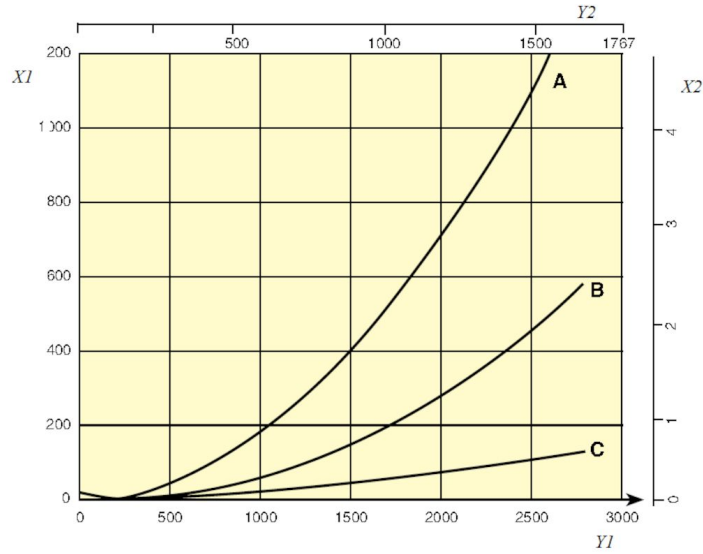
	Accessory	Part No
	Exhaust hose nr-cp l=7.5m (24') d=125mm (5")	20820962
	Exhaust hose nr-cp l=10m (33') d=125mm (5")	20821062
	Exhaust hose nr-cp l=2.5m (8') d=150mm (6")	20821162
	Exhaust hose nr-cp l=5m (16') d=150mm (6")	20821262
	Exhaust hose nr-cp l=7.5m (24') d=150mm (6")	20821362
	Exhaust hose nr-cp l=10m (33') d=150mm (6")	20821462
	Hose suspension, hard plastic Ø100 mm	20373607
	Hose suspension, hard plastic Ø125 mm	20373608
	Hose suspension, hard plastic Ø150 mm	20373609
	Top outlet Ø200 (8 in) for 920	20374246
	Balancer trolley 920	20374652**
	Balancer with 26 feet cord diam. 5/32 inch, 22 - 30 lb.	20800631**
	Balancer Kit, for 920/400	20373759***
	Safety coupling ø100 (4")	20373797
	Safety coupling ø150 (6")	20373798

*Complete with suspension parts, joint connectors, rubber seals, end covers and end stops.

**For extra long hose

***For upgrade of 400 extraction unit

Exhaust rail system 920 for stationary vehicles



Pressure drop 920 Rail

X1= Pressure, Pa

Y1 = Air flow, m³/h

X2 = Pressure, in. w.g.

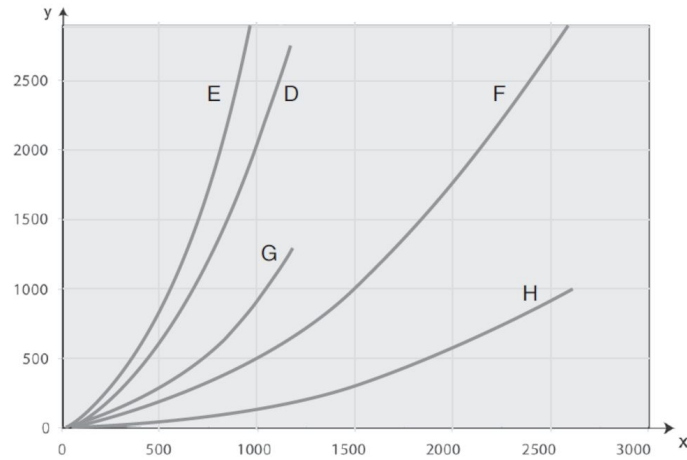
Y2 = Airflow, CFM

A= Top connection, Ø200 mm

B= Side connection, Ø160 mm

C= Rail 920, per metre (Pa/m)

Exhaust rail system 920 for stationary vehicles



Pressure drop extraction units and trolleys

D = Extraction unit 400, 5 m Ø 100 mm

E = Extraction unit 400, 7.5 m Ø 100 mm

F = Extraction unit 1500, 5 m Ø 150 mm

G = Trolley 400 (without hose)

H = Trolley 1500 (without hose)