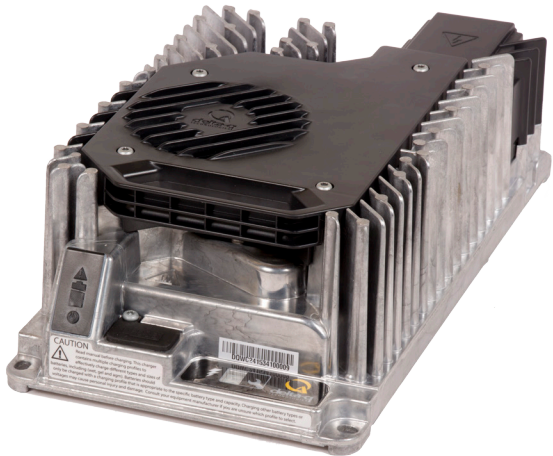




IC

1200



Available models:

24 V / 50 A

36 V / 33 A

48 V / 25 A

Delta-Q IC1200

1200 W Industrial Battery Charger

Capable of charging lead acid (wet, AGM, gel) and lithium battery chemistries, the IC1200 Charger is available in on- and off-board configurations. Optional CAN bus communication ensures seamless machine integration and AC/DC cabling is completely customizable. Applications include aerial work platforms, lift trucks, floor care machines, utility vehicles, and motorcycles.



High Reliability

Engineered using design for reliability. Validated for long service life in worst-case operating conditions. Tested to perform reliably and durably in automotive applications. Manufactured in a world class facility specializing in high reliability solutions.



Charge Quality

Charge profiles to precisely charge deep-cycle lead acid and lithium batteries. Developed in Delta-Q's battery lab to balance charge time, battery life and application requirements.



Easy to Integrate

Assists machine troubleshooting with built-in charge cycle tracking. Download data / upgrade software through USB host port. Optional CAN bus communication enables deep machine integration, diagnostics and control.



Global + Efficient

Capable of operating reliably on any single-phase grid worldwide. High-efficiency performance for electricity savings and shorter charge times. Active cooling enables optimal peak performance.

delta-q.com



Additional certifications can be pursued based on market demand.

IC1200 Charger Specifications

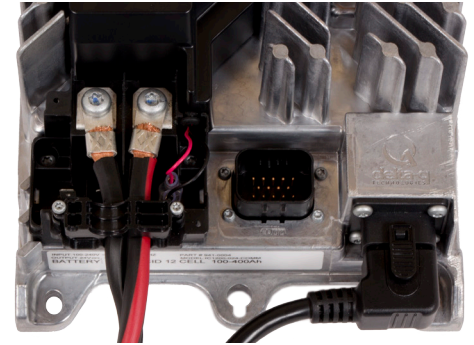
| DC Output | 24 VDC | 36 VDC | 48 VDC |
|---|---------------------------------------|--------|--------|
| Maximum DC output voltage | 36 V | 54 V | 72 V |
| Maximum DC output current | 50.0 A | 33.3 A | 25.0 A |
| Maximum DC output power | 1200 W | | |
| Deep discharge recovery (minimum voltage) | 1.2 V | 1.8 V | 2.4 V |
| Maximum C3 interlock current | 10.0 A | 2.0 A | 0.5 A |
| Battery type | Lead acid (wet / AGM / gel), lithium | | |
| Reverse polarity | Electronic protection with auto-reset | | |
| Short circuit | Electronic current limit | | |

| AC Input | | |
|----------------------------|------------------|------------------|
| AC input voltage range | 85-270 VAC | |
| Nominal AC input voltage | 100-240 VAC | |
| Nominal AC input frequency | 50 / 60 Hz | |
| Maximum AC input current | 14.5 A | |
| Nominal AC input current | 13.4 A @ 100 VAC | 11.1 A @ 120 VAC |
| | 5.7 A @ 230 VAC | 5.5 A @ 240 VAC |
| Power factor | >0.99 @ 120 VAC | >0.98 @ 230 VAC |

| Regulatory | |
|------------|---|
| Efficiency | 90% at full load, 120 VAC, 48 VDC 92% at full load, 240 VAC, 48 VDC California Energy Commission (CEC) compliant |
| Safety | UL1564, CSA 107.2, EN 60335-2-29 |
| Emissions | FCC Part 15 / ICES 003 Class A, EN55011, EN 61000-6-4 |
| Immunity | EN 61000-3-2, EN 61000-3-3, EN 61000-6-2 |

| Mechanical | |
|---------------------|---|
| Dimensions | 33.5 x 17.9 x 10.5 cm (13.2 x 7.0 x 4.1") |
| Weight | 4.1 kg (9.0 lbs) |
| AC input connector | IEC320 / C14 (requires country-specific cord) |
| DC output connector | M6 threaded fasteners for ring terminals (field replaceable) |
| Service port | Sealed (IP66) USB 2.0 Host Port (Type A) with dust cover |
| Mounting holes | 6.4mm (1/4") diameter slots |
| Cooling | Active cooling with fan (Variable speed, field serviceable, field replaceable) |

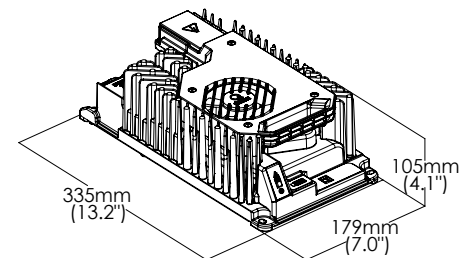
| Environmental | |
|------------------------------|--|
| Enclosure | IP66 (NEMA4) |
| Mechanical shock & vibration | GMW3172 |
| Corrosion & humidity | |
| Thermal fatigue | |
| Operating temperature | -40°C to +65°C (-40°F to 149°F) Derated at >40°C (104°F) |
| Storage temperature | -40°C to +85°C (-40°F to 185°F) |



Usability Features

- + Optional CAN bus communication for machine integration or lithium BMS
- + Multi-color LED indicator for AC source, battery status, charging, error, fault
- + Numeric display for charge profile, alarm/fault codes
- + Field programmable with up to 25 charge profiles
- + Auto-recharge for low voltage in maintenance mode
- + OEM customizable, field replaceable cable design
- + Integrated carrying handle

Dimensions



Web: delta-q.com
 Phone: +1.604.327.8244
 E-mail: info@delta-q.com

Delta-Q Technologies
 3755 Willingdon Avenue
 Burnaby, BC V5G 3H3
 Canada

Visit delta-q.com/products to view the complete Delta-Q product portfolio.