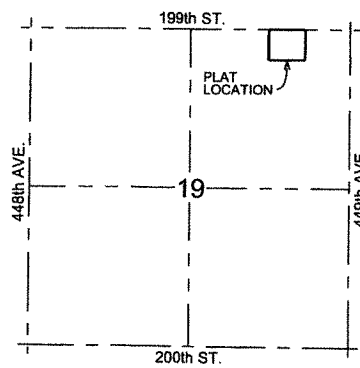
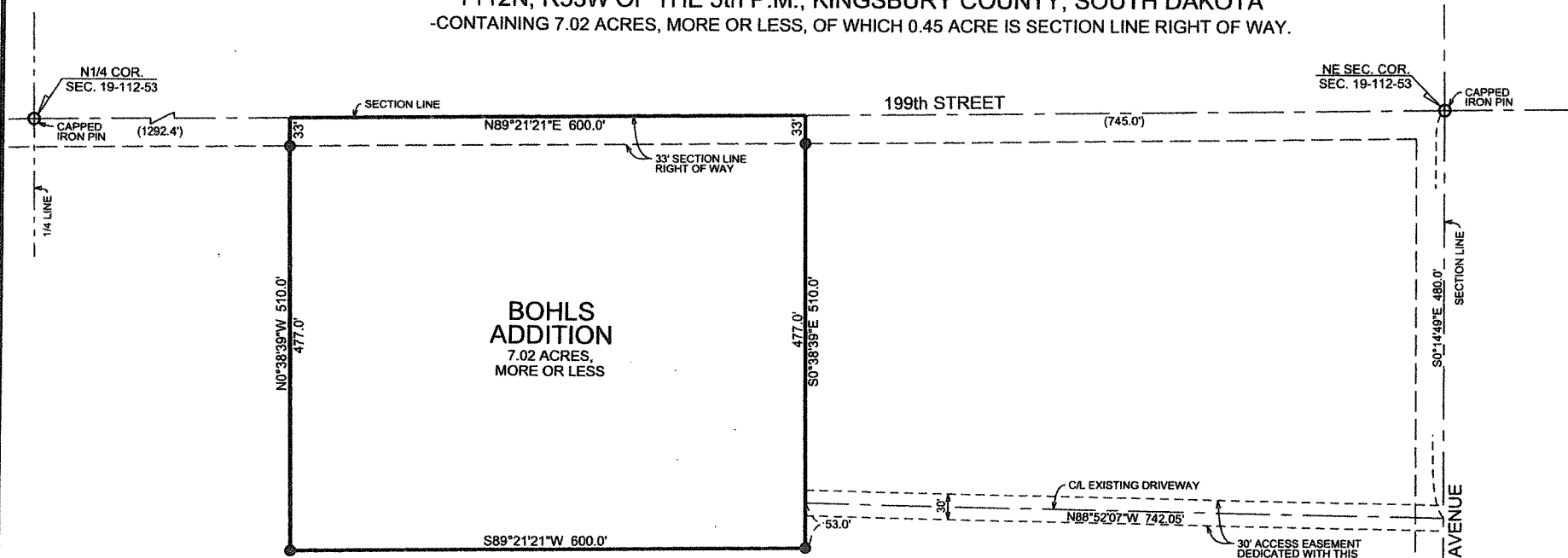
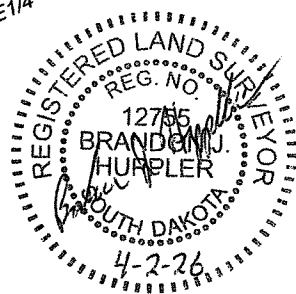


PLAT OF:
BOHLS ADDITION
 LOCATED IN THE NORTH HALF OF THE NORTHEAST QUARTER (N1/2NE1/4) OF SECTION 19,
 T112N, R53W OF THE 5th P.M., KINGSBURY COUNTY, SOUTH DAKOTA
 -CONTAINING 7.02 ACRES, MORE OR LESS, OF WHICH 0.45 ACRE IS SECTION LINE RIGHT OF WAY.



VACINITY MAP
 SEC. 19-112-53
 NOT TO SCALE

N1/2 NE1/4



NOTES:
 -30' ACCESS EASEMENT IS HEREBY DEDICATED WITH THIS PLAT.
 -SUBJECT TO EASEMENTS OF RECORD.

- CAPPED IRON PIN SET LS 12755
- EXISTING MONUMENT AS NOTED

