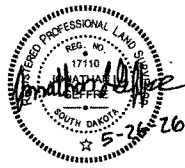
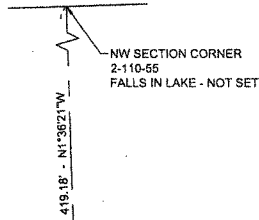
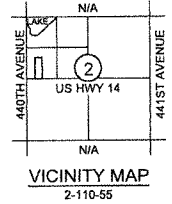


PLAT OF
LAKE PRESTON CEMETERY SECOND ADDITION
 IN THE SOUTHWEST QUARTER OF THE NORTHWEST QUARTER (SW1/4 NW1/4) OF
 SECTION 2, TOWNSHIP 110 NORTH, RANGE 55 WEST OF THE 5TH PRINCIPAL MERIDIAN,
 KINGSBURY COUNTY, SOUTH DAKOTA



LINE TABLE		
LINE #	LENGTH	DIRECTION
L1	25.98'	N1°36'21"W
L2	25.98'	S1°36'22"E
L3	25.98'	S1°36'22"E



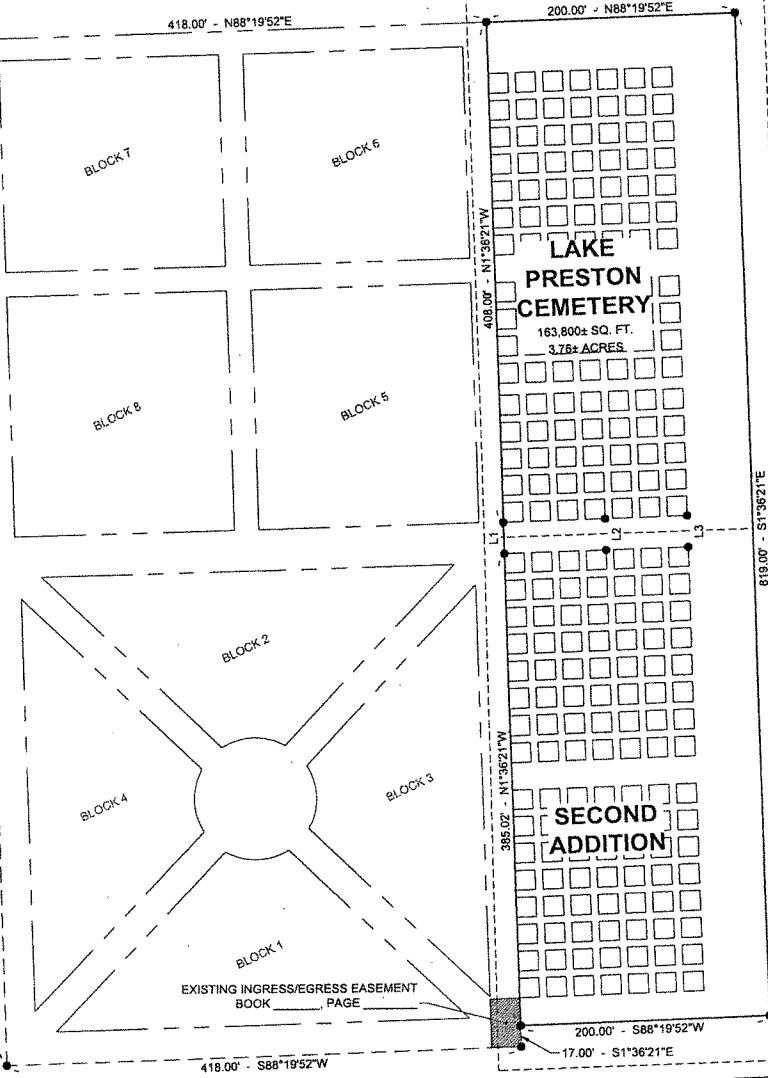
LEGEND

- MONUMENT FOUND
- SET 5/8" REBAR W/CAP #17110 (UNLESS NOTED)
- - - STATUTORY R.O.W. LINE
- ▲ SET WITNESS CORNER (5/8" REBAR W/CAP #17110 UNLESS NOTED)
- ▨ EXISTING INGRESS/EGRESS EASEMENT

NW1/4
2-110-55

440TH AVENUE
SECTION LINE

2106.84' - N1°36'21"W
636.00' - N1°36'21"W



DETAIL 1 - (SEE PAGE #2)

DETAIL 2 - (SEE PAGE #3)

NW1/4
2-110-55

PREPARED BY:
 BANNER ASSOCIATES, INC.
 409 22nd AVE. S.
 BROOKINGS, SD 57006
 (605) 682-6342