



WORLD - LEADING INNOVATION

In this year, A-Forge has adopted new manufacturability to their lineup in China and VIETNAM, from forging, hydroforming to now THE GRAVITY CASTING! Gravity casting open model for Down tube(double layer) with motor bracket :

DT-051 with BOSCH's battery and motor BOSCH



DT-056

Open model of PINION

MANUFACTURED BY GRAVITY CASTING



X-ray Full Inspections



GRAVITY CASTING PRODUCTION:

At present, A-Forge Gravity Casting Department has sufficient capacity and ability of mass-producing the e-bike tubing and parts. From motor bracket, bracket integrated DT to double layer DT, Headtube connector and HT to DT to Bracket in one piece and even to ST together in one piece, A-Forge shows its dynamic productivity in various possibility of frame part, and being ready to embrace the era of new energy with all kinds of frame part manufacturability. (Hydroforming, Forging, to Gravity Casting)

INNOVATION IS OUR MAIN POWER FOR CONTINUOUS BREAKTHROUGH

A-Forge Ent. Co., Ltd.

No.193-1, Sec. 1, Shenlin Rd., Daya Dist., Taichung City 428, Taiwan
TEL: +886-4-25676851 FAX: +886-4-25682995
E-mail: aforce@ms29.hinet.net /aforce@aforce.com.tw

A-Forge METAL PRODUCTS (VIETNAM) COMPANY LIMITED(AVN)

7 VSIP I-A, Street 32, Vietnam-Singapore Industrial Park II-A, Tan Binh Town, Bac Tan Uyen District, Binh Duong Province, Vietnam
TEL:84-867958733 E-mail:avn@aforce.com.tw

天成車料(深圳)有限公司/九川金屬製品(深圳)有限公司

TIANCHEN BICYCLE-PARTS(SHENZHEN) CO., LTD
A-FORMING METAL PRODUCTS(SHEN ZHEN) CO., LTD
TEL:86-755-28012794/6 FAX:86-755-28012795 E-mail: aforce@vip.163.com

天盛金屬製品(東莞)有限公司

A-FORGE CASTING METAL PRODUCTS (DONGGUAN) CO., LTD.
TEL:86-755-28012794/6 FAX:86-755-28012795
E-mail: aforce@vip.163.com



WORLD - LEADING INNOVATION

Welcome OEM/ODM Development

As E-BIKES get more sophisticated, So do hydroformed parts from A-FORGE www.aforge.com.tw

Mono DT with
Excellent Stiffness For
Step Through Bike

FIT 310-550mm
Battery Length

PATENT
Seat tube

European Patent
3521152

China Patent
ZL 2018 2 0210697.9

One piece design of
Downtube & Motor Bracket

China Patent

ZL 2018 2 0212382.8

(Started since 2018.10.09)

Taiwan Patent

I676575 (Started since 2019.11.11)

European Patent

20 2023 102 762

Performance Line SX - Housing
variant 2(62.75.6)
CPT400 fixed mount horizontal



A-FORGE

Welcome OEM/ODM Cooperation

Innovation is Our Main Power For Continuous Breakthrough.

九川實業股份有限公司
A-FORGE ENTERPRISE CO., LTD

TEL:886-4-25676851 FAX:886-4-25682995
E-mail: aforge@aforge.com.tw aforge@ms29.hinet.net

A-FORGE METAL PRODUCTS (VIETNAM) COMPANY LIMITED(AVN)
7 VSIP II-A, Street 32, Vietnam-Singapore Industrial Park II-A,
Tan Binh Town, Bac Tan Uyen District, Binh Duong Province, Vietnam
TEL: 84-867958733 E-mail: avn@aforge.com.tw

天成車料(深圳)有限公司 / 九川金屬製品(深圳)有限公司
TIANCHEN BICYCLE-PARTS(SHENZHEN) CO., LTD
A-FORMING METAL PRODUCTS(SHEN ZHEN) CO., LTD
TEL:86-755-28012794/6 FAX:86-755-28012795
E-mail: aforge@vip.163.com

福巨金屬製品(南通)有限公司
A-FORGE METAL PRODUCTS(NANTONG) CO., LTD
TEL: 86-513-80979695 E-mail: aforge_nt01@aforge.com.tw

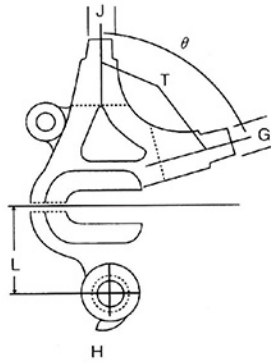
天盛金屬製品(東莞)有限公司
A-FORGE CASTING METAL PRODUCTS (DONGGUAN) CO., LTD.
TEL:86-755-28012794/6 FAX:86-755-28012795 E-mail: aforge@vip.163.com



九川實業股份有限公司
台中市大雅區神林路一段193-1號
TEL:886-4-25678851 FAX:886-4-25682995
E-mail: aforge@aforge.com.tw aforge@ms29.hinet.net

A-FORGE ENTERPRISE CO., LTD
NO. 193-1, SECTION 1, SHENLIN ROAD,
DAYA DISTRICT TAICHUNG CITY, 428
天成車料(深圳)有限公司
九川金屬製品(深圳)有限公司
深圳市觀湖街道獅徑社區洗屋村工業一路6號
TEL:86-755-28012794/6 FAX:86-755-28012795
E-mail: aforge@vip.163.com

TIANCHEN BICYCLE-PARTS(SHENZHEN) CO., LTD
A-FORMING METAL PRODUCTS(SHEN ZHEN) CO., LTD
NO.6 OF 1ST INDUSTRY RD, XIANWU GROUP SHIJING VILLAGE,
GUANLAN TOWN, BAO AN COUNTRY, SHENZHEN, CHINA
AFORGE METAL PRODUCTS(VIETNAM) CO., LTD
7 VSIP II-A Street 32, Vietnam-Singapore Industrial Park II-A,
Tan Binh Town, Bac Tan Uyen District, Binh Duong Province, Vietnam
天盛金屬製品(東莞)有限公司
A-FORGE CASTING METAL PRODUCTS (DONGGUAN)CO., LTD.



Model A-F3306

| | θ | T | L | H | G | J |
|---|----------|-----|---|---|----|----|
| A | 49° | 7.0 | | | 19 | 19 |



Model A-F3306-A

| | θ | T | L | H | G | J |
|---|----------|-----|---|---|----|----|
| A | 49° | 7.0 | | | 19 | 19 |



Model A-F3306-B

| | θ | T | L | H | G | J |
|---|----------|-----|----|-----|----|----|
| A | 49° | 7.0 | 28 | 30° | 19 | 19 |



Model A-F3513

| | θ | T | L | H | G | J |
|---|----------|-----|----|-----|----|----|
| A | 45° | 8.0 | 29 | 28° | 22 | 19 |
| B | 54° | 8.0 | 29 | 28° | 22 | 19 |
| C | 61° | 8.0 | 29 | 28° | 22 | 19 |
| D | 68° | 8.0 | 29 | 28° | 22 | 19 |



Model A-F3513-DB

| | θ | T | L | H | G | J |
|---|----------|-----|----|-----|------|----|
| A | 45° | 8.0 | 29 | 28° | 24.2 | 21 |
| B | 54° | 8.0 | 29 | 28° | 24.2 | 21 |
| C | 61° | 8.0 | 29 | 28° | 24.2 | 21 |
| D | 68° | 8.0 | 29 | 28° | 24.2 | 21 |



Model A-F3518

| | θ | T | L | H | G | J |
|---|----------|-----|----|-----|----|---|
| A | | 8.0 | 29 | 28° | 15 | |



Model A-F3523

| | θ | T | L | H | G | J |
|---|----------|-----|----|-----|------|------|
| A | 53° | 8.0 | 26 | 30° | 14.5 | 10.5 |
| B | 61° | 8.0 | 26 | 30° | 14.5 | 10.5 |
| C | 64° | 8.0 | 26 | 30° | 14.5 | 10.5 |
| D | 67° | 8.0 | 26 | 30° | 14.5 | 10.5 |
| E | 69° | 8.0 | 26 | 30° | 14.5 | 10.5 |
| F | 72° | 8.0 | 26 | 30° | 14.5 | 10.5 |



Model A-F3523-B

| | θ | T | L | H | G | J |
|---|----------|-----|----|-----|------|------|
| A | 53° | 8.0 | 26 | 30° | 14.0 | 10.0 |
| B | 61° | 8.0 | 26 | 30° | 14.0 | 10.0 |
| C | 64° | 8.0 | 26 | 30° | 14.0 | 10.0 |
| D | 67° | 8.0 | 26 | 30° | 14.0 | 10.0 |
| E | 69° | 8.0 | 26 | 30° | 14.0 | 10.0 |



Model A-F3526

| | θ | T | L | H | G | J |
|---|----------|-----|----|-----|----|----|
| A | | 8.0 | 28 | 30° | 19 | 13 |



Model A-F3526-C



Model A-F3527

| | θ | T | L | H | G | J |
|---|----------|-----|----|-----|---|---|
| A | | 8.0 | 29 | 28° | | |



Model A-F3527-A

| | θ | T | L | H | G | J |
|---|----------|-----|----|-----|---|---|
| A | | 8.0 | 29 | 28° | | |



Model A-F3528

| | θ | T | L | H | G | J |
|---|----------|-----|----|-----|----|------|
| A | 45° | 8.0 | 28 | 40° | 20 | 15.4 |
| B | 51° | 8.0 | 28 | 40° | 20 | 15.4 |
| C | 57° | 8.0 | 28 | 40° | 20 | 15.4 |
| D | 61° | 8.0 | 28 | 40° | 20 | 15.4 |
| E | 65° | 8.0 | 28 | 40° | 20 | 15.4 |



Model A-F3559

| | θ | T | L | H | G | J |
|---|----------|-----|----|-----|----|----|
| A | 52° | 8.0 | 30 | 36° | 18 | 19 |



Model A-F3559-B



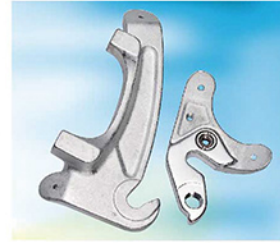
Model A-F3570

| | θ | T | L | H | G | J |
|---|----------|-----|----|-----|---|---|
| A | | 8.0 | 29 | 28° | | |



Model A-F3572

| | θ | T | L | H | G | J |
|---|----------|-----|----|-----|---|---|
| A | | 8.0 | 30 | 30° | | |



Model A-F3572-A

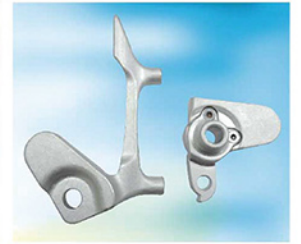
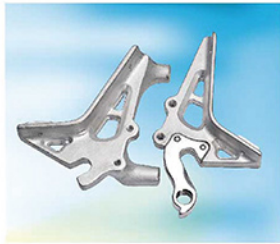
| | θ | T | L | H | G | J |
|---|----------|-----|----|-----|----|----|
| A | 52° | 8.0 | 30 | 36° | 18 | 19 |

Model A-F3600

Model A-F3600-C

Model A-F3602

Model A-F3603



Model A-F3605
For Disc brake 140mm

Model A-F3605-B
For Disc brake 160mm

Model A-F3606

Model A-F3615

Model A-F3619



Model A-F3620

Model A-F3620-C
Flat Mount for road racing bike

Model A-F3620-BH
Add speed sensor that fits Bosch/ Shimano

Model A-F3621

Model A-F3623
Flat Mount for road racing bike



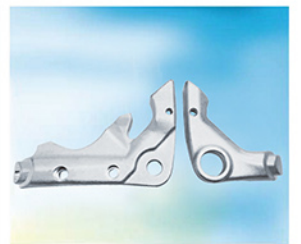
Model A-F3623-A

Model A-F3624
Flat Mount for road racing bike

E-thru A-F3625

Model A-F3626

Model A-F3631-L
Flat Mount
A-F3631-R-UD UDH hanger



Model A-F3631
Flat Mount for road racing bike

Model A-F3631-A
Flat Mount

Model A-F3642

Model A-F3643
E-THRU

Model AF3643-E
L side with disc brake 160 mm & BOSCH speed sensor
R side with SRAM UDH hanger



A-F3167-0



A-F3190



A-F3200



A-F3200-1



A-F3200-1A



A-F3220-1



A-F3245-1



E-thru A-F3246



AUK-03



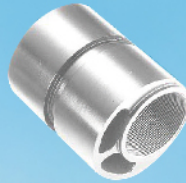
AUK-04



AF3633
Kickstand



A-FCS01



A-FCS02



A-FCS06



AF-PT500-01
Battery Adapter/Connector



A1-26
BROSE
Motor Bracket



A1-28
SHIMANO
EP8 E8 E7 E61 E5
Motor Bracket



A1-29-N
BOSCH-Active
G3
Motor Bracket



A1-33
YAMAHA
Motor Bracket



A1-36
SHIMANO
E6100
Motor Bracket



A1-39
BOSCH
G4
Motor Bracket



A1-46
BOSCH
Gravity Casting
Motor Bracket



A1-47
SHIMANO
EP8 E8 E7 E61 E5
Motor Bracket



A1-48
BOSCH
G4
2 Pieces
Welded MB



A1-51
BROSE S-Mag
Motor Bracket



A1-52
BOSCH
SX Housing
variant 2(62.75.6)



A1-54
BAFANG
G80
Motor Bracket



A1-55
BAFANG
G520-M500
Motor Bracket



A1-57
BOSCH CX
Gravity Casting
Motor Bracket

NEW



A-HG001



A-HG002



A-HG003



A-HG005



A-HG006



A-HG009



A-HG010



A-HG011



A-HG012



A-HG013



A-HG013-4



A-HG014



A-HG015



A-HG017



A-HG018



A-HG020



A-HG022



A-HG023



A-HG026



A-HG027



A-HG029



A-HG033



A-HG036



A-HG038



A-HG039



A-HG039-1



A-HG041



A-HG043



A-HG045



A-HG049



A-HG051



A-HG056



A-HG057



A-HG058



A-HG059



A-HG060



A-HG061



A-HG062



A-HG063



A-HG068



A-HG069



A-HG072



A-HG075



A-HG078



Ø12X142心轴

A-HG081



A-HG082



A-HG083



A-HG084



A-HG085



Ø12X142心轴

A-HG087



Ø12X142心轴

A-HG088



A-HG090



A-HG092



A-HG093



A-HG164



A-HG276



NEW

Authorized Manufacturer

A-HG316 UDH

Aluminum 6061
Alloy body with plastic overmolded (6061/7075)
Fit with M12XP1.0/ P1.75/ P1.5