

## RIGHT-OF-WAY

All right-of-way and easements have been acquired for this project.

## CIVIL RIGHTS

Chesterfield County ensures nondiscrimination and equal employment in all programs and activities in accordance with Title VI and Title VII of the Civil Rights Act of 1964. If you need more information regarding your civil rights on this project or special assistance for persons with disabilities or limited English proficiency, contact the project manager listed below.

## ENVIRONMENTAL CONSIDERATIONS

Environmental reviews and coordination with the state agencies to obtain information about environmental resources in the project vicinity has been completed. Natural and historic resource agencies have had an opportunity to review and comment on the project during its development; and identify opportunities for avoidance, minimization, and mitigation of environmental impacts. All appropriate environmental permits have been prepared and will be reviewed/authorized by the regulatory agencies during the permitting process. Permitting is required for the temporary impacts to Swift Creek and for the permanent impacts to the jurisdictional streams in the project area. The project is being coordinated with the Virginia Department of Transportation (VDOT) as part of the Local Environmental Review Process (LERP), which included a review of the potential impacts to endangered species within the vicinity of the project.

## PROJECT SCHEDULE

Notice to Proceed	February 2022
Close Crossing 1 Horsepen Creek	March 2022 – October 2022
Close Crossing 2 Blackman Creek	October 2022 – May 2023
Close Crossing 3 Otterdale Branch	May 2023 – December 2023
Proposed Final Completion	May 2024

## CONTACT INFORMATION

For questions, please email [transportation@chesterfield.gov](mailto:transportation@chesterfield.gov) or phone 804-748-1037. Project information and materials for this meeting are available online at <https://otterdaleroaddrainageimprovements.com/>.

<b>Primary Contact:</b> Nate Mathis, P.E. Senior Engineer	Chesterfield County Department of Transportation	9800 Government Center Parkway P.O. Box 40 Chesterfield, VA 23832-0040
---	--	--



## Pardon Our Dust – Otterdale Branch Final Crossing (Crossing 3) Otterdale Road Drainage Improvements Project

Chesterfield County  
April 11, 2023, 6 PM – 7:30 PM  
In Person at Cosby High School  
14300 Fox Club Parkway  
Midlothian, VA 23112

## PARDON OUR DUST

Welcome to the Chesterfield County Transportation Department Pardon Our Dust Meeting for the Otterdale Road Drainage Improvements Project, Crossing 3 – Otterdale Branch.

This meeting is being held to inform project stakeholders about construction impacts, detour routes, and schedules for the upcoming closure of Otterdale Branch Crossing. Tonight is an opportunity for any person, acting on his/her own behalf or representing a group or governing agency, to ask questions about the upcoming project and associated closure.

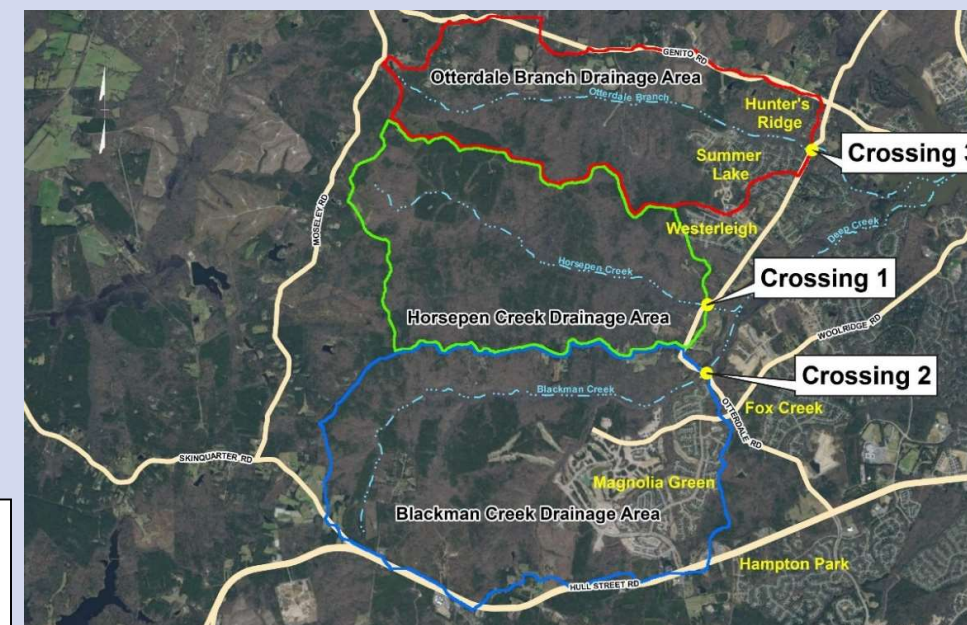
We encourage you to ask questions. Chesterfield County representatives, as well as our consulting engineers and contractors, are available to discuss the project and answer your questions.

## PROJECT OVERVIEW

**PURPOSE:** Replace undersized drainage culverts and bridge crossings at three locations along Otterdale Road including Horsepen Creek, Blackman Creek and Otterdale Branch with new single and multi-span bridges to minimize the likelihood of future flooding along the Otterdale Road Corridor in the county. Associated roadway approach work includes improving existing horizontal curves, raising the associated road profile, improving the roadway shoulders and ditches at each crossing, and the addition of drainage Best Management Practice (BMP) facilities.

**LOCATION:** 1000’ south of each stream crossing to approximately 1000’ north, for a total length of approximately 1.1 miles.

**PROJECT IS COUNTY FUNDED**



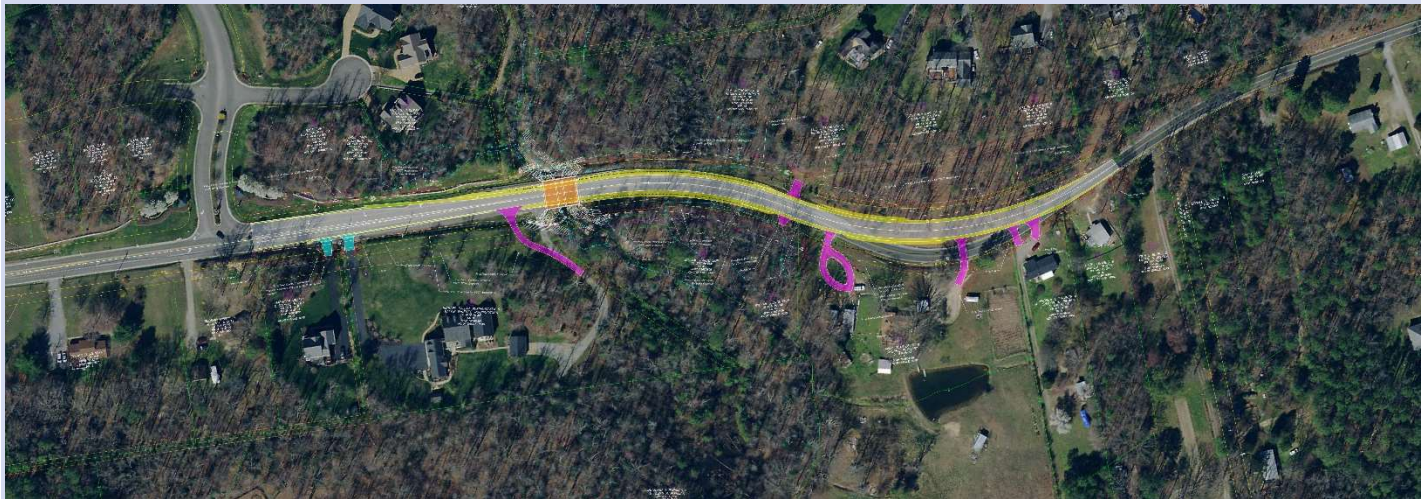
Otterdale Road Drainage Improvements Project Location Map

# OTTERDALE BRANCH CROSSING - PROJECT DESCRIPTION

The Otterdale Road Drainage Improvements Project will provide the design of right-of-way and construction plans, at the Horsepen Creek, Blackman Creek, and Otterdale Branch crossings. At Otterdale Branch Crossing, the proposed improvements involve bridge construction with roadway grade and approach improvements. The project design includes widened shoulders to accommodate bicyclists and geometric curve improvements to improve safety along Otterdale Road. The project also includes the design of all major design elements, including utility relocations, hydraulics and hydrology, pavement markings, signs, and environmental permitting. The project will be designed to capture and treat stormwater run-off from impervious areas as required by state law.

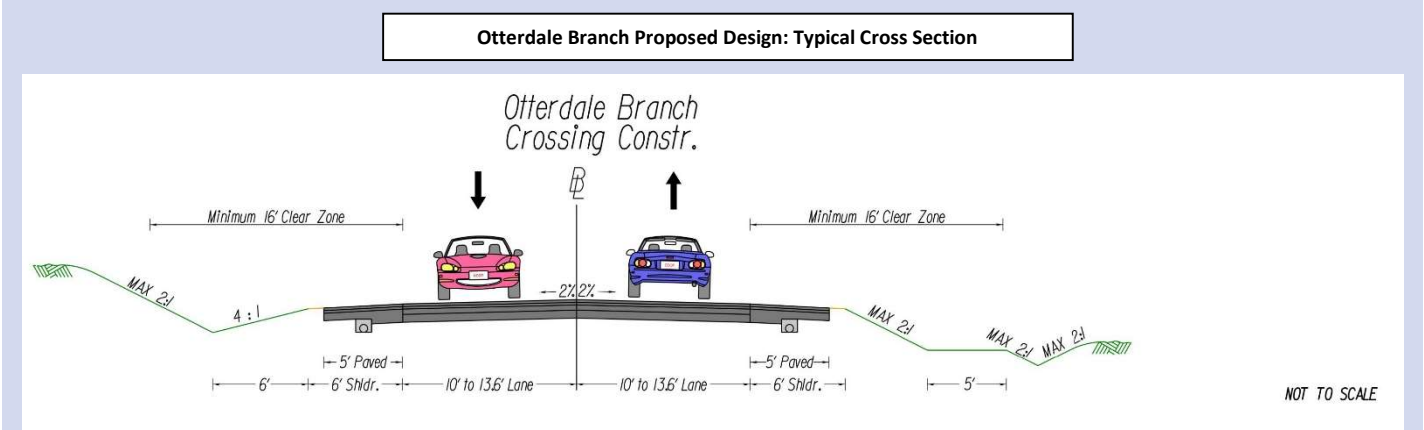
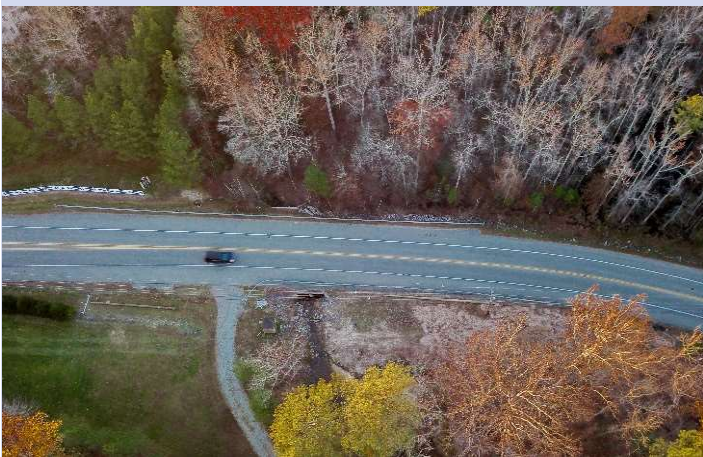
The existing box culvert at Otterdale Branch Crossing will be removed and replaced with a prefabricated bridge structure, and the roadway profile will be raised up to 10 feet. Additional roadway improvements along Otterdale Road include the reconstruction of five private driveways impacted by the project.

Otterdale Branch Proposed Design: Plan View



Otterdale Branch: Existing Condition

Otterdale Branch: Rendering of Proposed Design



## OTTERDALE BRANCH DETOUR ROUTE

### DETOUR DATES: MAY 2023 THROUGH DECEMBER 2023

Construction at Otterdale Branch uses a full roadway closure and detouring of traffic to Woolridge Road (Route 668) to minimize impacts on traffic and accelerate construction efforts. To accommodate the increased traffic on Woolridge Road, signal timing adjustments will be made at the following intersections:

- Woolridge Road and Otterdale Road
- Woolridge Road and Genito Road

Traffic operations will be monitored at intersections of Woolridge Road & Timber Bluff Parkway and Woolridge Road & Fox Club Road. Access to residential neighborhoods will be maintained throughout the construction at Otterdale Branch. No night work is anticipated during construction. Signage will be provided to guide drivers along the detour route.

