



Pardon Our Dust Otterdale Road Drainage Improvements Project Otterdale Branch- Crossing 3

**April 11, 2023; 6 P.M. to 7:30 P.M.
Formal Presentation at 6:30 P.M.**





Introduction

- **Chesterfield County**

- Mr. Kevin Carroll – Matoaca District Supervisor, Chesterfield County
- Nate Mathis, PE – Senior Engineer, Chesterfield County Transportation Department
- Larry Brown, PE – County Consultant Engineer – JMT
- Neal Talley – JMT Onsite Owner Representative

- **Kokosing Construction Company**

- Ryan Gorman, PE, DBIA – Design-Build Project Manager
- Chris Rutkai, PE – Deputy Design-Build Project Manager

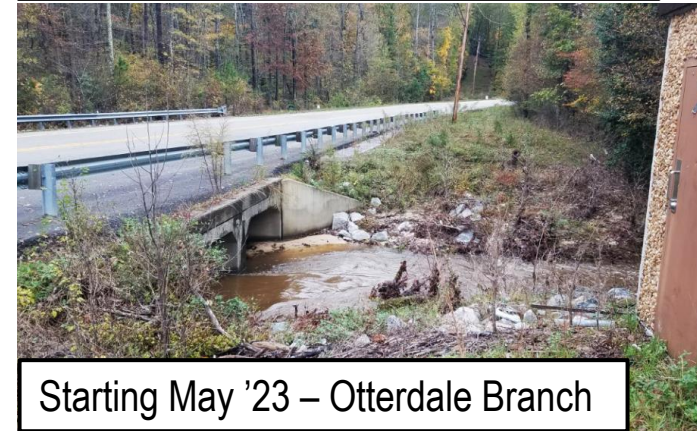
- **Rinker Design Associates, PC**

- Darell Fischer, PE, DBIA – Design Manager
- Brandon Shock, PE, DBIA – Deputy Design Manager



Agenda

- Introduction
- Project Purpose
- Construction Updates
- Project Schedule
- Project Overview (Otterdale Branch)
- Detour Routes (New)
- Construction Impacts
- Questions

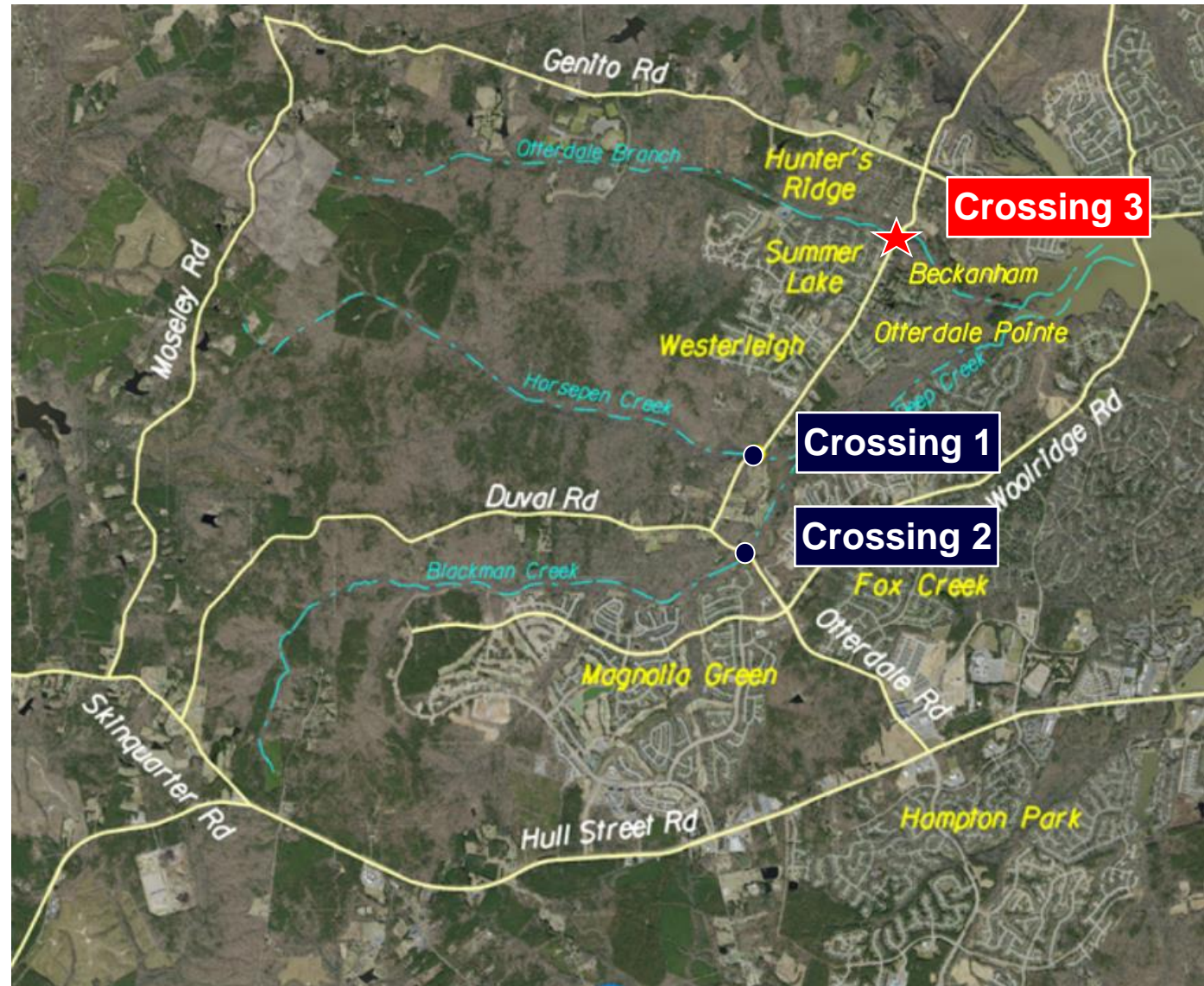




Project Purpose

- Alleviate flooding concerns at three (3) locations along the Otterdale Road Corridor
 - Horsepen Creek – Crossing 1
 - Complete
 - Blackman Creek – Crossing 2
 - Anticipated to open early May 2023
 - **Otterdale Branch – Crossing 3**
 - **Starting May 2023**

This meeting is for the
Otterdale Branch– Crossing 3



Construction Updates

Otterdale Road Drainage Improvements
Chesterfield County, VA

[HOME](#) [EXHIBITS](#) [NEWS RELEASES](#) [PARDON OUR DUST](#)

News Releases

[Download PDF >](#)

Stay up to date and subscribe to the monthly newsletter

SIGN UP

kokosing


CONSTRUCTION COMPANY, INC.

Otterdale Road Drainage Improvements
 January 2023

CONTINUING WORK AT BLACKMAN CREEK CROSSING

Major construction work will continue at Blackman Creek through the Spring of 2023. The bridge foundation activities began ahead of schedule and are progressing quickly. Progress that has been made since the last newsletter update:

- Utility relocations are completed
- Drilling operations have started at the third and final foundation location
- The pier foundation has been poured and is curing
- Concrete arches are being cast at a plant in North Carolina



OTTERDALE BRANCH UPDATE:

- Advanced tree clearing at Otterdale Branch is progressing well and on track to be completed by the end of January

BLACKMAN CREEK NEXT STEPS: Over the next several weeks the following activities are planned to be worked on or completed:

- The abutment foundations will be poured when the drilling operations are complete
- Rip rap will be placed on top of underground utilities to protect them from the creek
- Precast arches will be set to span the foundations; this will save time and accelerate the schedule
- Strategic stormwater facilities such as dry swales will begin to be installed; these will filter stormwater once final grades are achieved
- Ongoing maintenance of installed erosion and sediment control measures is ongoing and will continue through the life of the project




Fig. 2: Precast arches

We invite you to visit our project website at www.otterdaleroaddrainageimprovements.com for information on the project and any immediate updates.

Kokosing Construction Company is one of the largest family-owned contractors in the country with unparalleled self-perform experience and resources to serve the transportation sector constructing everything from highways and iconic bridges to working in landfills. Our capabilities include asphalt and concrete paving, mass excavation, piling, post-tensioning, steel erection and underground utilities.

Ohio | Indiana | Michigan | Kentucky | Pennsylvania | West Virginia | Maryland | Virginia

kokosing.biz
otterdaleroaddrainageimprovements.com



Construction Updates – Blackman Creek





Construction Updates – Blackman Creek

- Drone Progress Footage: [Otterdale Presentation_Drone.pptx](#)



Overall Project Schedule

Project Milestone	Anticipated Date
Notice to Proceed	February 2022
Pardon Our Dust Meeting 1 – Horsepen Creek	February 17, 2022
Close Crossing 1 Horsepen Creek	March 14, 2022 to September 29, 2022
Pardon Our Dust Meeting 2 – Blackman Creek	August 17, 2022
Close Crossing 2 Blackman Creek	October 5, 2022 to May 2023*
Pardon Our Dust Meeting 3 - Otterdale Branch	April 11, 2023
Close Crossing 3 Otterdale Branch	May 2023 to December 2023*
Proposed Final Completion	May 2024

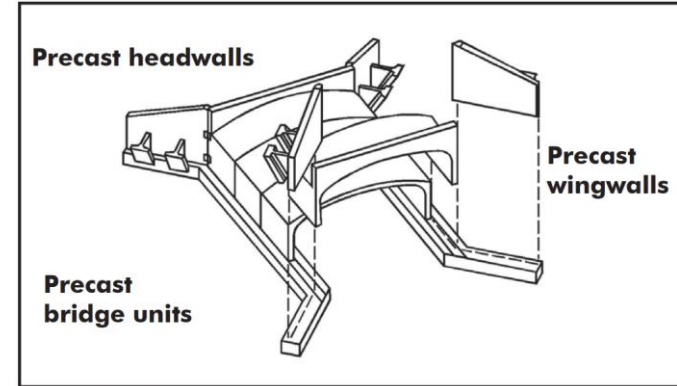
Closure by contract will not exceed 7 months **at each crossing**

*Road Closure dates will be refined as construction progresses

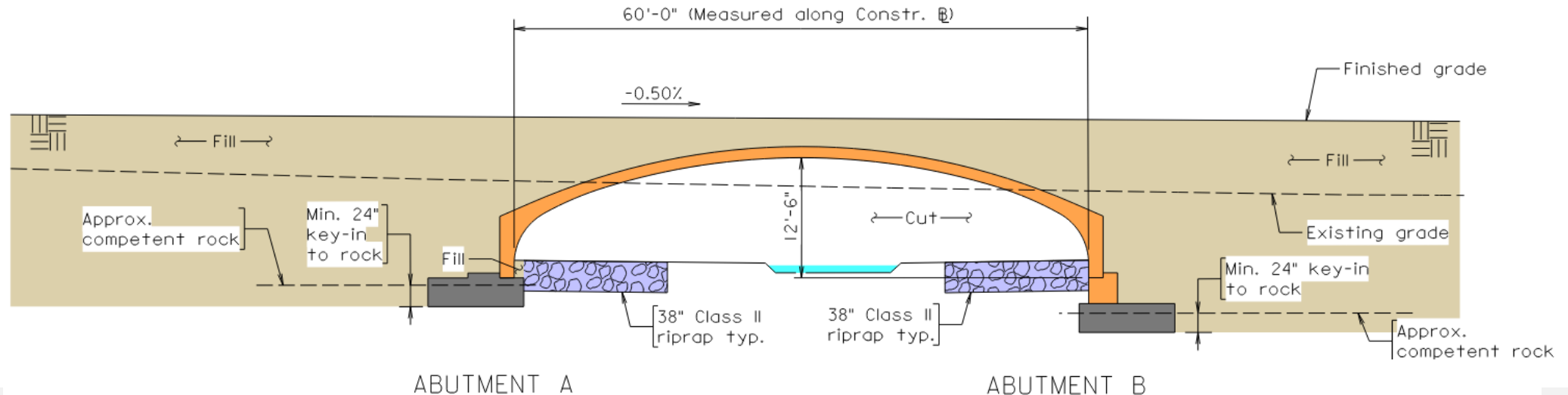


Project Overview

Otterdale Branch – Crossing 3



Complete Precast System



Project Overview

Otterdale Branch – Crossing 3



Chesterfield County
Transportation
Department

Pardon Our Dust

Otterdale Branch - Otterdale Road Drainage Improvements

Design Build Team



Project Location



North Arrow & Scale



Legend

- Proposed Road
- Proposed Shoulder
- Proposed Bridge
- Proposed Gravel Entrances
- Proposed Asphalt Entrances
- Delineation of Existing Pavement
- Proposed Limits of Construction - Cut
- Proposed Limits of Construction - Fill
- Prescriptive Right of Way
- Acquired Right of Way
- Acquired Permanent Drainage Easement
- Acquired Permanent Driveway, Vision, & VDOT Utility Easement
- Acquired Temp. Construction Easement
- Existing Easements
- Delineated Wetlands
- Proposed Ditch

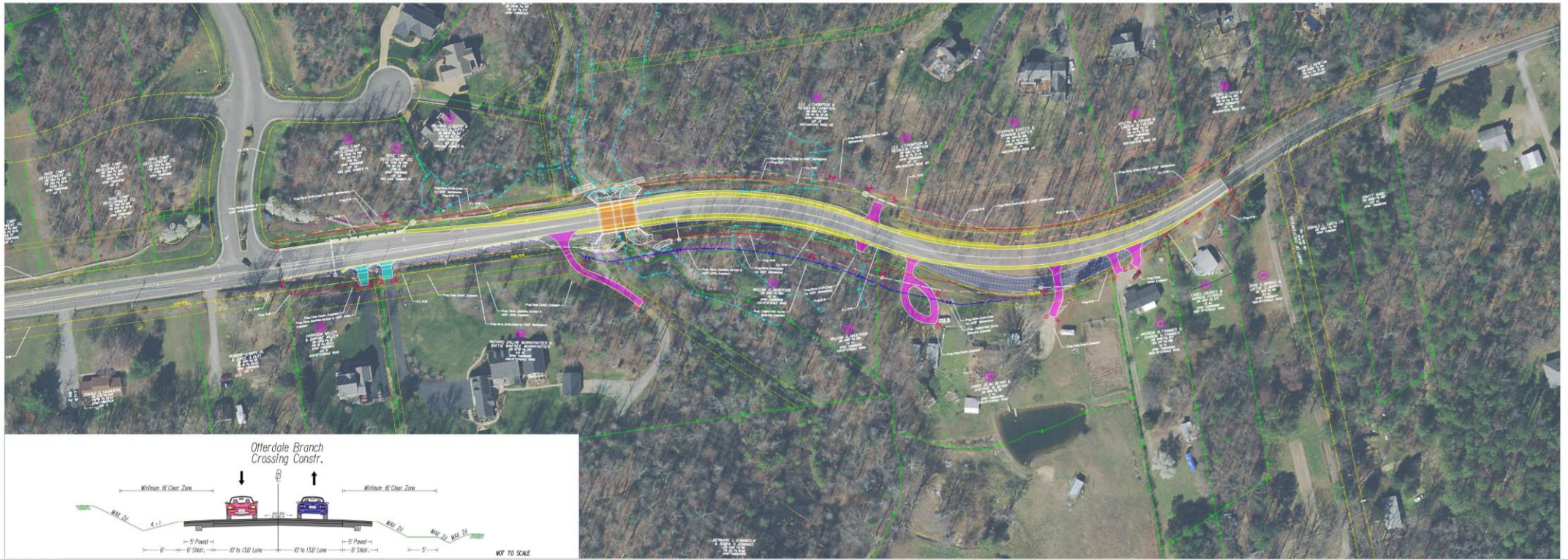
Note: All Right of Way and Easements have already been acquired.

Contact Information

Nate Mathis, P.E.
Senior Engineer
Chesterfield County Transportation Department
9800 Government Center Parkway
P.O. Box 40
Chesterfield, VA 23832-0040
transportation@chesterfield.gov
804-766-1027
More info can be found at:
otterdalebranch@improvements.com

Otterdale Road Drainage Improvements Project
Chesterfield County, Virginia
County Project Number: J-11948C1

Imagery Courtesy of the Commonwealth of Virginia copyright 2017.



www.otterdaleroaddrainageimprovements.com



Project Overview

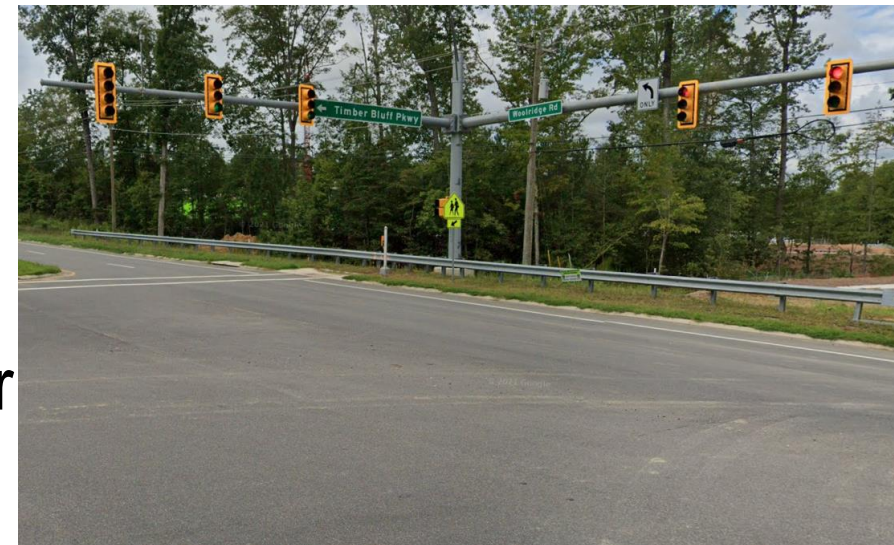
Otterdale Branch – Crossing 3





Otterdale Branch – Crossing 3 Construction Impacts

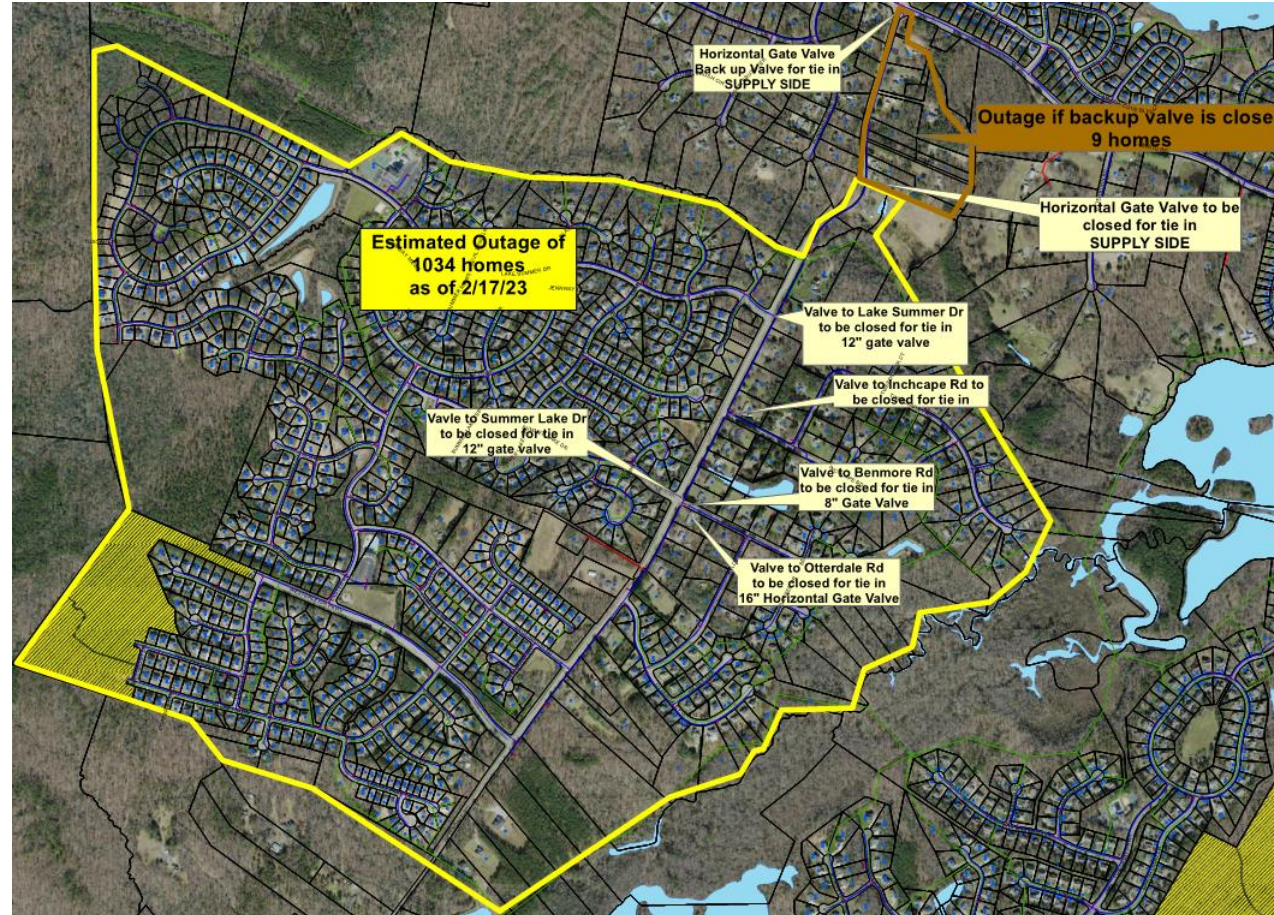
- Road closure on Otterdale Road (**New Closure**)
 - Otterdale at Blackman Creek will be opened
 - Otterdale at Otterdale Branch will be closed
- Signal timing adjustments to accommodate increased traffic flows
 - Intersection of Woolridge Rd. and Otterdale Rd.
 - Intersection of Woolridge Rd. and Genito Rd.
 - Monitor Traffic operations at Woolridge Rd. & Timber Bluff Pkwy and Woolridge Rd. & Fox Club Rd.



Otterdale Branch – Crossing 3

Construction Impacts – Waterline Relocation

Short-term water outages are expected at the following properties during the waterline tie-in.



A PDF Brochure of tonight's meeting can be downloaded from the website

RIGHT-OF-WAY

All right-of-way and easements have been acquired for this project.

CIVIL RIGHTS

Chesterfield County ensures nondiscrimination and equal employment in all programs and activities in accordance with Title VI and Title VII of the Civil Rights Act of 1964. If you need more information regarding your civil rights on this project or special assistance for persons with disabilities or limited English proficiency, contact the project manager listed below.

ENVIRONMENTAL CONSIDERATIONS

Environmental reviews and coordination with the state agencies to obtain information about environmental resources in the project vicinity has been completed. Natural and historic resource agencies have had an opportunity to review and comment on the project during its development, and identify opportunities for avoidance, minimization, and mitigation of environmental impacts. All appropriate environmental permits have been prepared and will be reviewed/authorized by the regulatory agencies during the permitting process. Permitting is required for the temporary impacts to Swift Creek and for the permanent impacts to the jurisdictional streams in the project area. The project is being coordinated with the Virginia Department of Transportation (VDOT) as part of the Local Environmental Review Process (LERP), which included a review of the potential impacts to endangered species within the vicinity of the project.

PROJECT SCHEDULE

Notice to Proceed	February 2022
Close Crossing 1 Horsepen Creek	March 2022 – October 2022
Close Crossing 2 Blackman Creek	October 2022 – May 2023
Close Crossing 3 Otterdale Branch	May 2023 – December 2023
Proposed Final Completion	May 2024

CONTACT INFORMATION

For questions, please email transportation@chesterfield.gov or phone 804-748-1037. Project information and materials for this meeting are available online at <https://otterdaleroaddrainageimprovements.com/>.

Primary Contact: Nate Mathis, P.E. Senior Engineer	Chesterfield County Department of Transportation	9800 Government Center Parkway P.O. Box 40 Chesterfield, VA 23832-0040
---	--	--



**Pardon Our Dust – Otterdale Branch
Otterdale Road Drainage Improvements
Project**
Chesterfield County
April XX, 2023, X PM – X PM
In Person at Location TBD

PARDON OUR DUST

Welcome to the Chesterfield County Transportation Department Pardon Our Dust Meeting for the Otterdale Road Drainage Improvements Project.

This meeting is being held to inform project stakeholders about construction impacts, detour routes, and schedules for the upcoming closure of Otterdale Branch Crossing. Tonight is an opportunity for any person, acting on his/her own behalf or representing a group or governing agency, to ask questions about the upcoming project and associated closure. We encourage you to ask questions. Chesterfield County representatives, as well as our consulting engineers and contractors, are available to discuss the project and answer your questions.

PROJECT OVERVIEW

PURPOSE: Replace undersized drainage culverts and bridge crossings at three locations along Otterdale Road including Horsepen Creek, Blackman Creek and Otterdale Branch with new single and multi-span bridges to minimize the likelihood of future flooding along the Otterdale Road Corridor in the county. Associated roadway approach work includes improving existing horizontal curves, raising the associated road profile, improving the roadway shoulders and ditches at each crossing, and the addition of drainage Best Management Practice (BMP) facilities.

LOCATION: 1000' south of each stream crossing to approximately 1000' north, for a total length of approximately 1.1 miles.

PROJECT IS COUNTY FUNDED

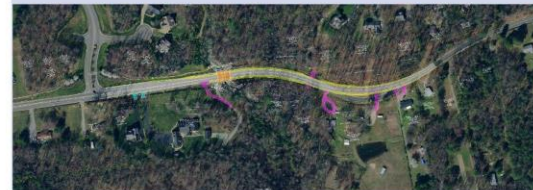


OTTERDALE BRANCH CROSSING - PROJECT DESCRIPTION

The Otterdale Road Drainage Improvements Project will provide the design of right-of-way and construction plans, at the Horsepen Creek, Blackman Creek, and Otterdale Branch crossings. At Otterdale Branch Crossing, the proposed improvements involve bridge construction with roadway grade and approach improvements. The project design includes widened shoulders to accommodate bicyclists and geometric curve improvements to improve safety along Otterdale Road. The project also includes the design of all major design elements, including utility relocations, hydraulics and hydrology, pavement markings, signs, and environmental permitting. The project will be designed to capture and treat stormwater run-off from impervious areas as required by state law.

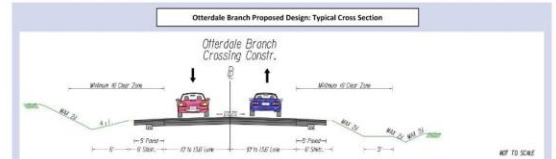
The existing box culvert at Otterdale Branch Crossing will be removed and replaced with a prefabricated bridge structure, and the roadway profile will be raised approximately 4 feet. Additional roadway improvements along Otterdale Road include the reconstruction of five private driveways impacted by the project.

Otterdale Branch Proposed Design: Plan View



Otterdale Branch: Existing Condition

Otterdale Branch: Rendering of Proposed Design



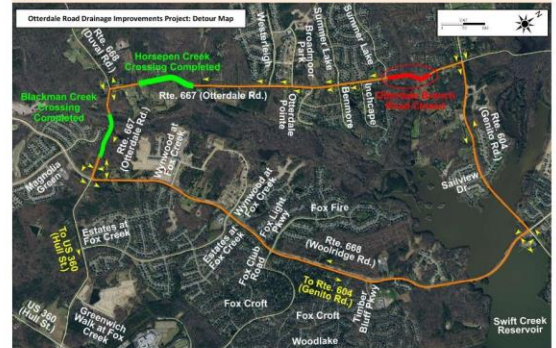
OTTERDALE BRANCH DETOUR ROUTE

DETOUR DATES: MAY 2023 THROUGH DECEMBER 2023

Construction at Otterdale Branch uses a full roadway closure and detouring of traffic to Woolridge Road (Route 668) to minimize impacts on traffic and accelerate construction efforts. To accommodate the increased traffic on Woolridge Road, signal timing adjustments will be made at the following intersections:

- Woolridge Road and Otterdale Road
- Woolridge Road and Genito Road

Traffic operations will be monitored at intersections of Woolridge Road & Timber Bluff Parkway and Woolridge Road & Fox Club Road. Access to residential neighborhoods will be maintained throughout the construction at Otterdale Branch. No night work is anticipated during construction. Signage will be provided to guide drivers along the detour route.

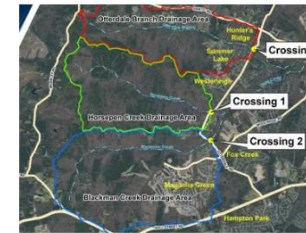




Thank you, please visit the website and follow us on Twitter!

- OtterdaleRoadDrainageImprovements.com

Construction Schedule



Construction Schedule

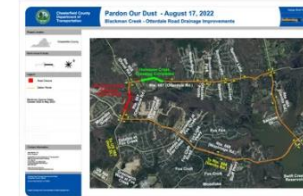
Horsepen Creek Crossing:
Beginning March 2022

Blackman Creek Crossing:
Beginning October 2022

Otterdale Branch Crossing:
Beginning June 2023

For additional information visit:
<https://www.chesterfield.gov/5106/Otterdale-Road-Drainage-Improvements>

Active Detour



During the Blackman Creek Crossing closure, traffic will detour the area using Woolridge Road and Genito Road

Construction Updates



Currently scheduled the first week in October:
-Horsepen Creek detour to be lifted
-Blackman Creek detour to begin

Public Pardon Our Dust Meeting
August 17, 2022
6-8 P.M.
In Person at Cosby High School

PROJECT NEWSLETTER

Contact Us

Submit a question

Name*

Email*

Message*

SEND

This site is protected by reCAPTCHA and the Google Privacy Policy and Terms of Service apply.

Or contact Nate Mathis with Chesterfield County directly
(804) 748-1037
mathisn@chesterfield.gov

Otterdale Road Drainage Improvements Chesterfield County, VA

HOME EXHIBITS NEWS RELEASES PARDON OUR DUST



www.otterdaleroaddrainageimprovements.com





Points of Contact

- Contact information:
 - Neal Talley – JMT Onsite Owner Representative
 - Phone: 540-500-9400
 - Email: Ntalley@JMT.com
 - Nate Mathis, P.E. – Senior Engineer
 - Phone: 804-748-1037
 - Email: MathisN@chesterfield.gov
 - Jonathan Smith - Kokosing Construction Manager
 - Phone: 804-441-0261
 - Email: Jsmith3@kokosing.biz
- Project information for this meeting is available online at:
 - <https://otterdaleroaddrainageimprovements.com/>