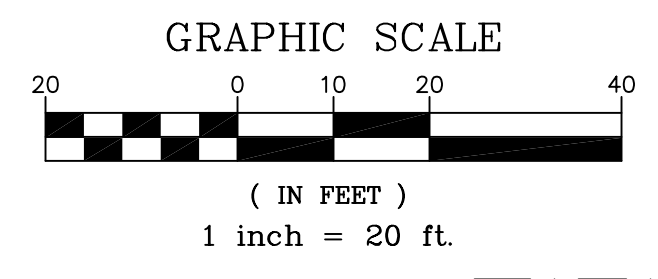
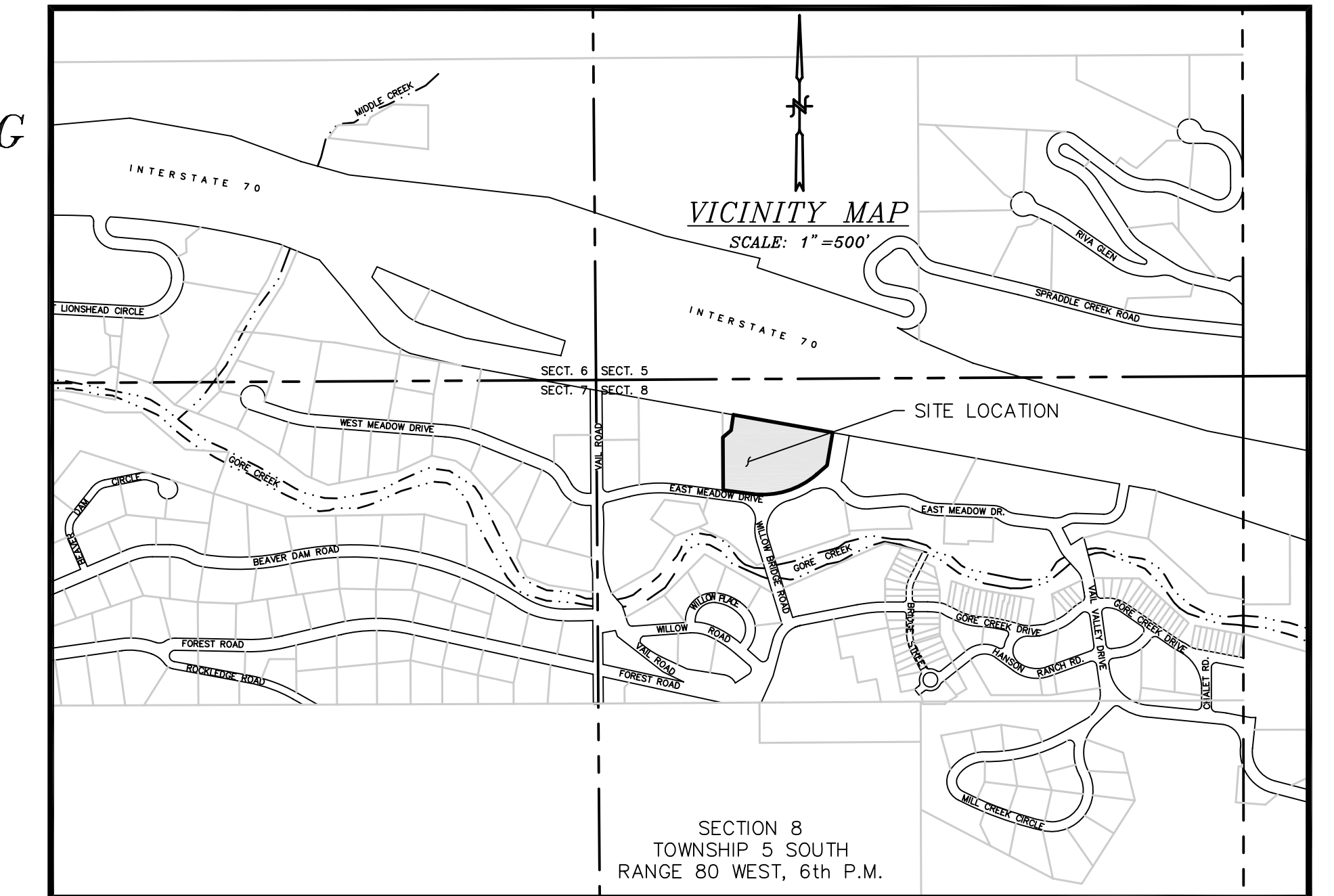


**EXHIBIT**  
**SOLARIS METROPOLITAN DISTRICT NOs. 1-3**  
**PART OF LOT P, BLOCK 5D AND A PART OF TRACT C, VAIL VILLAGE FIRST FILING**  
**TOWN OF VAIL, COUNTY OF EAGLE, STATE OF COLORADO**



**GENERAL NOTES**

1. DATE OF MAP: DECEMBER 30, 2008.
2. COORDINATES SHOWN FOR THE NORTHWEST CORNER AND THE N 1/4 CORNER OF SECTION 8 ARE BASED UPON NAD27 COLORADO CENTRAL ZONE (502) - U.S. FEET, BASED ON HARN (NGS) STATIONS "WOODMAN" AND "SPRADDLE".
3. BASIS OF BEARING: THE LINE CONNECTING THE MONUMENTS FOUND MARKING THE CORNER OF SECTIONS 5, 6, 7, AND 8, TOWNSHIP 5 SOUTH, RANGE 80 WEST OF THE 6TH P.M. AND THE N 1/4 CORNER OF SECTIONS 7 AND 8, BEING S00°09'28"W (STATE PLANE COORDINATES) S00°23'00"E (PLATTED) ROTATION FROM PLATTED = +0°32'28" (SEE DRAWING).

FOUND 3/4" ALUMINUM CAP  
 SET IN RANGE BOX  
 (ALPINE ENGINEERING)  
 N: 660395.915  
 E: 1752844.814

N75°19'49"W - 536.14'  
 NORTHWEST CORNER OF LOT P, BLOCK 5-D, VAIL VILLAGE, FIRST FILING  
 TRUE POINT OF BEGINNING

INTERSTATE No. 70 (SOUTH FRONTAGE ROAD)  
 (R.O.W. VARIES)  
 259.07'

A PART OF LOT P, BLOCK 5D,  
 VAIL VILLAGE FIRST FILING  
 (RECEPTION No. 96382)  
 AND  
 (DEED RECEPTION No. 109672)  
 ADDRESS: 143 EAST MEADOW DRIVE

POINT OF COMMENCEMENT  
 NORTHEAST CORNER OF LOT P,  
 BLOCK 5-D, VAIL VILLAGE, FIRST FILING

A PART OF TRACT C,  
 VAIL VILLAGE FIRST FILING  
 (RECEPTION No. 96382)  
 AND  
 (DEED RECEPTION No. 865122)  
 ADDRESS: 141 EAST MEADOW DRIVE

VILLAGE INN PLAZA  
 (RECEPTION No. 245351)

N 1/4 CORNER SEC. 7 AND SEC. 8  
 FOUND 3/4" ALUMINUM CAP  
 ON 2" STEEL POST (B.L.M.)  
 N: 659070.348  
 E: 1752841.169

**LEGAL DESCRIPTION (LAND DESCRIPTION INCLUDED IN DISTRICT 3)**

A PARCEL OF LAND LOCATED WITHIN A PART OF LOT P, BLOCK 5D AND A PART OF TRACT C, VAIL VILLAGE, FIRST FILING, ACCORDING TO THE PLAT THEREOF RECORDED AT RECEPTION No. 96382, TOWN OF VAIL, COUNTY OF EAGLE, STATE OF COLORADO MORE PARTICULARLY DESCRIBED AS FOLLOWS:

COMMENCING ON THE NORTHWEST CORNER OF SAID LOT P, THENCE S 79°46'00" E ALONG THE NORTHERLY LINE OF SAID LOT P AND ALSO BEING ON THE SOUTHERLY RIGHT-OF-WAY LINE OF INTERSTATE HIGHWAY NO. 70 A DISTANCE OF 44.90 FEET, SAID POINT BEING THE TRUE POINT OF BEGINNING;

THENCE S 79°46'00" E ALONG SAID NORTH LINE OF SAID LOT P, TRACT C, AND SAID SOUTHERLY RIGHT-OF-WAY LINE OF SAID INTERSTATE HIGHWAY NO. 70 A DISTANCE OF 423.40 FEET TO A POINT ON THE WESTERLY AND NORTHERLY RIGHT-OF-WAY LINE OF EAST MEADOW DRIVE; THENCE ALONG SAID WESTERLY AND NORTHERLY RIGHT-OF-WAY LINE OF SAID EAST MEADOW DRIVE THE FOLLOWING FIVE (5) COURSES:

1. S 09°53'55" W 111.52 FEET TO A POINT OF CURVATURE;
2. 27.37 FEET ALONG SAID CURVE, TURNING TO THE RIGHT HAVING A CENTRAL ANGLE OF 39°12'05", A RADIUS OF 40.00 FEET AND A CHORD WHICH BEARS S 29°29'58" W A DISTANCE OF 26.84 FEET TO A POINT OF TANGENT;
3. S 49°06'00" W 56.36 FEET TO A POINT OF CURVATURE;
4. 283.94 FEET ALONG A CURVE, TURNING TO THE RIGHT HAVING A CENTRAL ANGLE OF 48°19'00", A RADIUS OF 336.71 FEET AND A CHORD WHICH BEARS S 73°15'30" W A DISTANCE OF 275.60 FEET;
5. N 82°35'00" W A DISTANCE OF 120.82 FEET TO THE SOUTHWEST CORNER OF SAID LOT P; THENCE DEPARTING SAID NORTHERLY RIGHT-OF-WAY LINE OF SAID EAST MEADOW DRIVE N 00°23'00" W ALONG THE WEST LINE OF SAID LOT P A DISTANCE OF 216.27 FEET; THENCE DEPARTING SAID WEST LINE OF SAID LOT P N 50°11'32" E A DISTANCE OF 44.41 FEET; THENCE N 08°17'43" E A DISTANCE OF 65.12 FEET TO THE TRUE POINT OF BEGINNING.

SAID PARCEL CONTAINING 2.642 ACRES OF LAND MORE OR LESS.

THE ABOVE LEGAL DESCRIPTION WAS DERIVED FROM COMBINING TWO PARCELS PREVIOUSLY RECORDED AT RECEPTION No. 109672 AND RECEPTION No. 865122, AND VACATING AT RECEPTION No. 200722886 THOSE CERTAIN COVENANTS AND CONDOMINIUM MAP RECORDED IN BOOK 214 AT PAGE 261, BOOK 214 AT PAGE 262 AND AMENDMENTS/CORRECTIONS RECORDED IN BOOK 252 AT PAGE 353, AND BOOK 214 AT PAGE 686 IN THE EAGLE COUNTY CLERK AND RECORDERS OFFICE, EAGLE COUNTY, STATE OF COLORADO.

THE ABOVE AND FOREGOING DESCRIBES A SURFACE ESTATE ONLY, EXPRESSLY EXCLUDED FROM THIS LEGAL DESCRIPTION ARE ANY ESTATES BELOW THE SURFACE INCLUDING SAND AND GRAVEL AND ANY RELATED RIGHTS OF SURFACE USE.

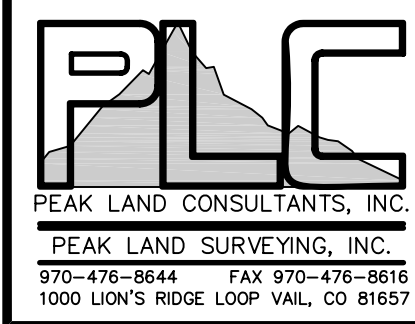
DICTIONARY 2 = 238951 Sq. ft.  
 DICTIONARY 3 = 352625 Sq. ft.

EASEMENT LINE TABLE		
LINE	LENGTH	BEARING
E1	42.27'	N34°46'00"W
E2	29.70'	S79°45'37"E

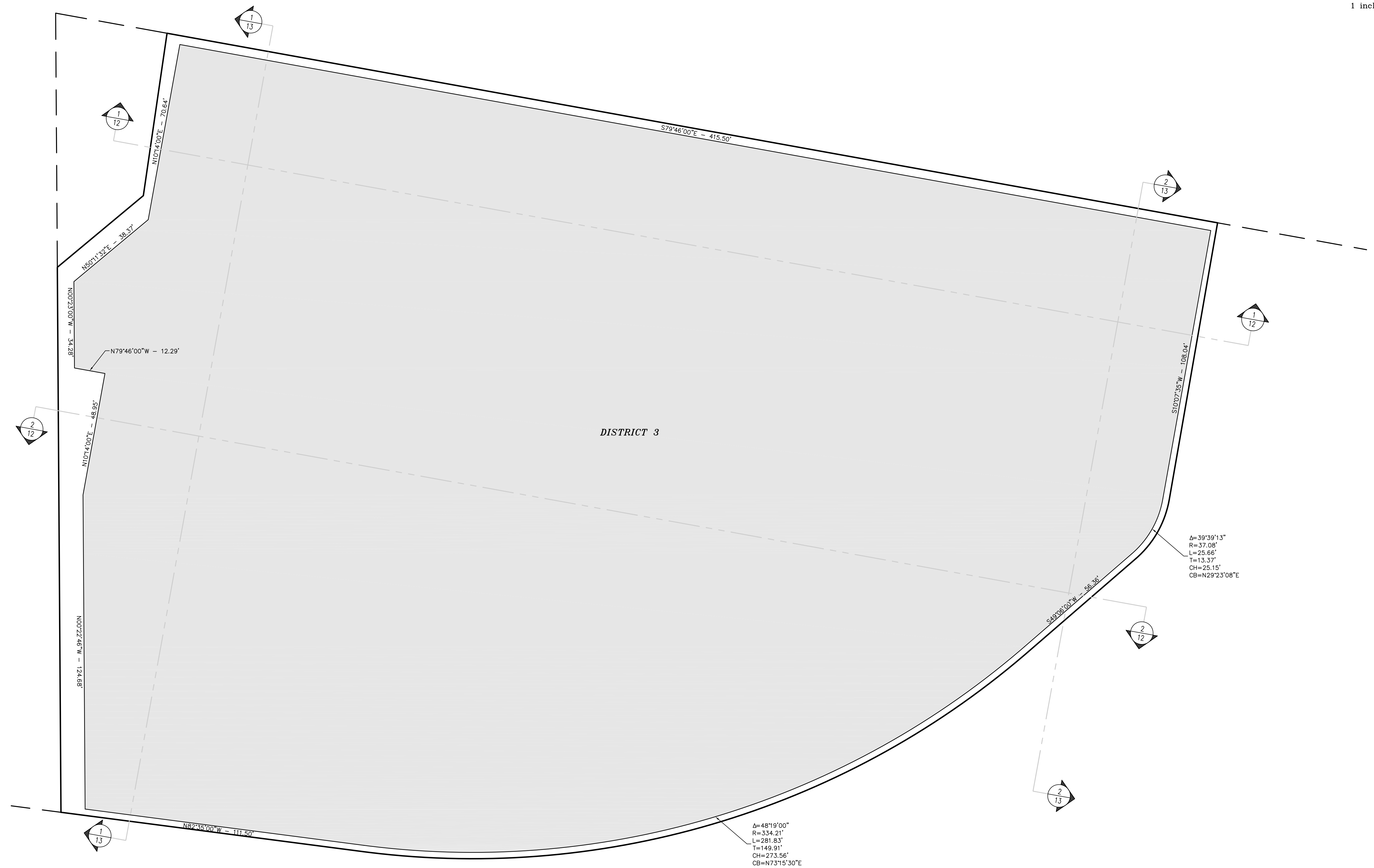
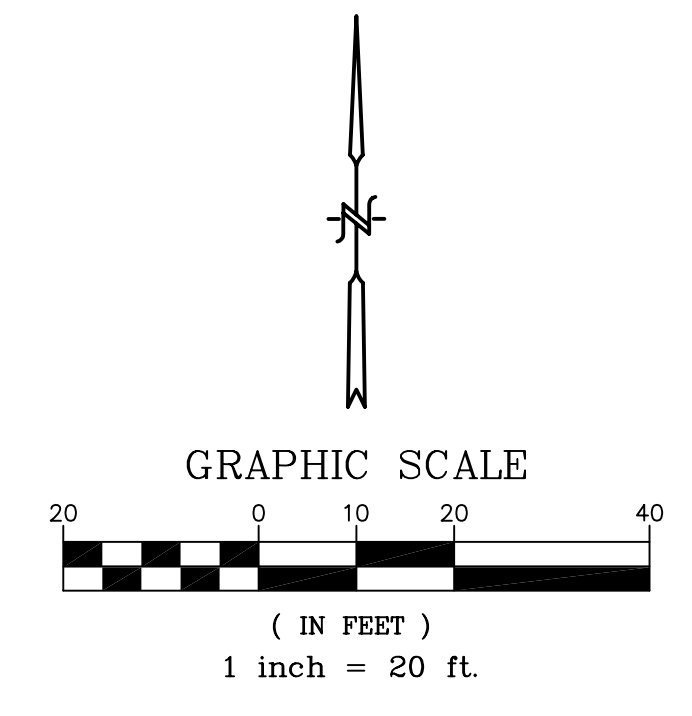
LINE TABLE		
LINE	LENGTH	BEARING
L1	5.37' (5.36' DEED)	S49°06'00"W

CURVE TABLE						
CURVE	DELTA	RADIUS	LENGTH	TANGENT	CHORD	CHORD BEARING
C1	39°12'05"	40.00'	27.37'	14.24'	26.84'	S29°29'58"W
C2	48°19'00"	336.71'	283.94'(254.56' PLAT)	151.03'	275.60'	S73°15'30"W
C3	22°04'55"	336.71'	129.77'	65.70'	128.97'	N86°22'31"E
C4	26°14'05"	336.71'	154.17'	78.46'	152.83'	N62°13'03"E

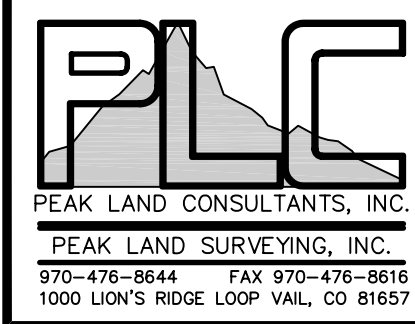
DRAWN BY: JF      JOB No. 1313  
 DATE: 12/31/08      SHEET 1 of 13



**EXHIBIT**  
**SOLARIS METROPOLITAN DISTRICT NOs. 1-3**  
 PART OF LOT P, BLOCK 5D AND A PART OF TRACT C, VAIL VILLAGE FIRST FILING  
 TOWN OF VAIL, COUNTY OF EAGLE, STATE OF COLORADO

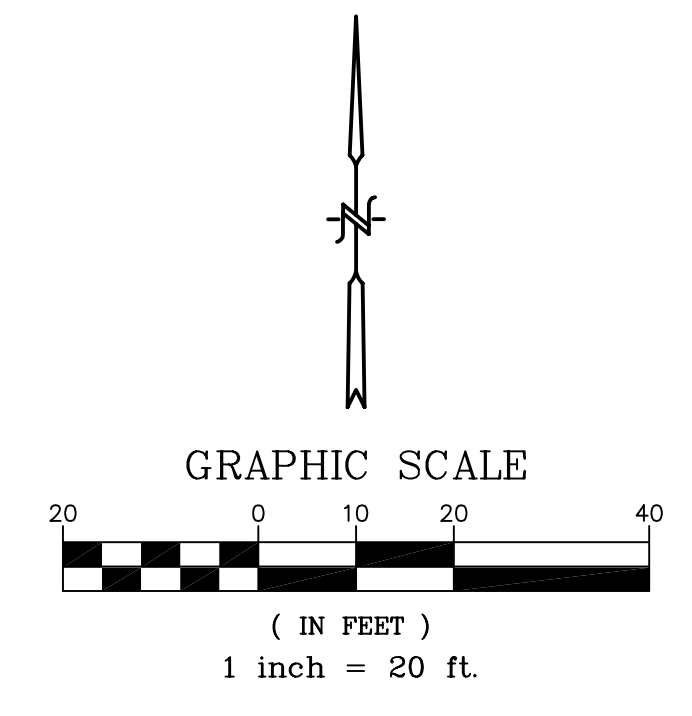


**GARAGE LEVEL**

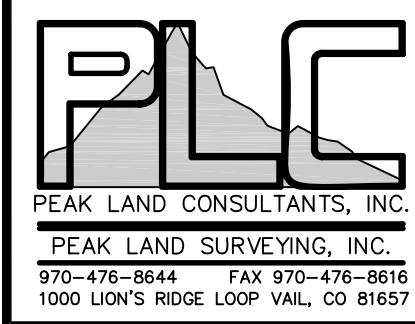


DRAWN BY: JF	JOB No. 1313
DATE: 12/31/08	SHEET 2 of 13

**EXHIBIT**  
**SOLARIS METROPOLITAN DISTRICT NOs. 1-3**  
 PART OF LOT P, BLOCK 5D AND A PART OF TRACT C, VAIL VILLAGE FIRST FILING  
 TOWN OF VAIL, COUNTY OF EAGLE, STATE OF COLORADO



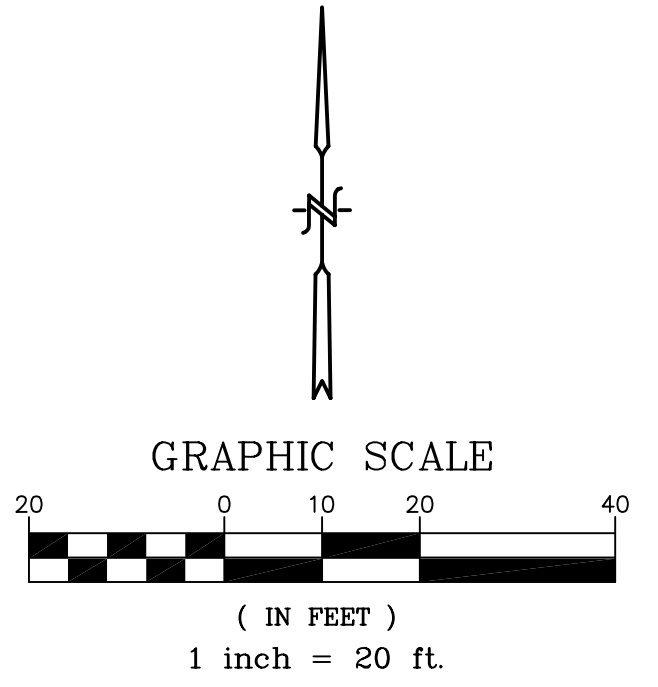
**FIRST LEVEL**



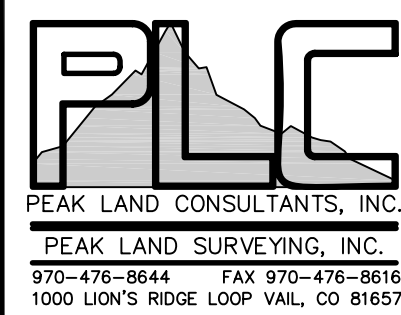
DRAWN BY: JF	JOB No. 1313
DATE: 12/31/08	SHEET 3 of 13

**EXHIBIT**  
**SOLARIS METROPOLITAN DISTRICT NOs. 1-3**  
 PART OF LOT P, BLOCK 5D AND A PART OF TRACT C, VAIL VILLAGE FIRST FILING  
 TOWN OF VAIL, COUNTY OF EAGLE, STATE OF COLORADO

LINE	LENGTH	BEARING
L201	1.55	S79°52'25"E
L202	5.07	N26°22'14"W
L203	4.23	S73°18'19"W
L204	4.97	N16°41'41"W
L205	3.09	N73°35'50"E
L206	7.33	N14°40'33"W
L207	3.67	S67°21'59"W
L208	3.89	N23°56'17"W
L209	4.11	S64°37'50"W
L210	4.07	N31°50'37"W
L211	3.06	N52°23'14"E
L212	18.49	N37°56'46"W
L213	3.07	S46°36'35"W
L214	4.00	N43°23'25"W
L215	4.12	S46°36'35"W
L216	4.11	N37°30'27"E
L217	3.95	N52°29'33"W
L218	2.71	N32°14'00"E
L219	16.54	N57°46'00"W
L220	11.05	S25°14'42"W
L221	11.07	N05°19'17"W
L222	16.75	S78°19'21"W
L223	2.69	S16°59'53"E
L224	3.98	S72°55'40"W
L225	4.08	S17°04'20"E
L226	14.60	S68°21'51"W
L227	4.09	N26°21'09"W
L228	3.95	S63°51'25"W
L229	3.06	N31°55'14"W
L230	18.52	S58°04'46"W
L231	3.07	S37°41'23"E
L232	4.94	S52°18'37"W
L233	3.10	N42°11'00"W
L234	13.76	S47°45'53"W
L235	7.02	S46°59'41"E
L236	6.63	N73°15'04"W
L237	17.05	N79°46'00"W
L238	24.16	S10°14'00"W
L239	2.30	S79°46'00"E
L240	27.29	S10°14'00"W
L241	2.22	N79°46'00"W
L242	9.89	N79°46'00"W
L243	0.87	N10°14'00"E
L244	4.48	N79°46'00"W
L245	15.94	N10°14'00"E
L246	4.15	S79°46'00"E
L247	14.52	N79°46'00"W
L248	7.50	N79°46'00"W
L249	6.28	N10°14'00"E
L250	3.02	N79°46'00"W
L251	7.25	N55°14'00"E



CURVE	DELTA	RADIUS	LENGTH	TANGENT	CHORD	CHORD BEARING
C201	39°12'26"	39.00'	26.69'	13.89'	26.17'	N29°29'47"E
C202	14°31'46"	335.71'	85.13'	42.80'	84.90'	N56°21'53"E
C203	23°29'55"	31.90'	13.09'	6.64'	12.99'	N12°35'39"E
C204	7°24'11"	116.15'	15.01'	7.51'	15.00'	N27°08'49"W
C205	5°53'58"	40.66'	4.19'	2.09'	4.18'	N58°51'17"E
C206	7°19'54"	114.09'	14.60'	7.31'	14.59'	N47°54'38"W
C207	23°29'21"	107.06'	43.89'	22.26'	43.59'	S28°11'47"W

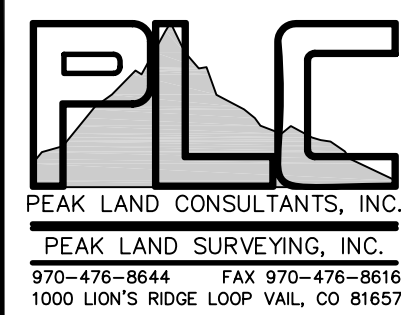
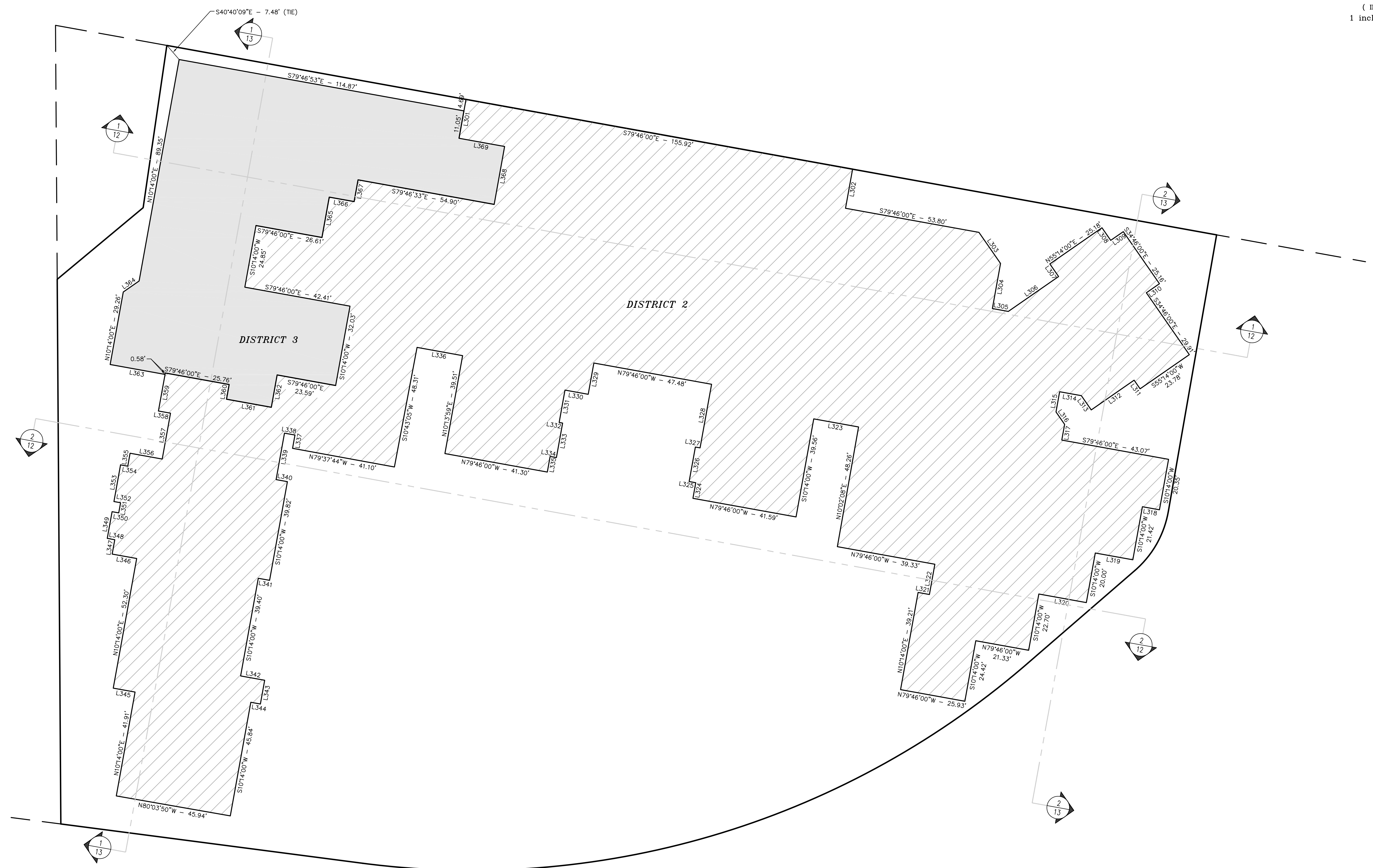
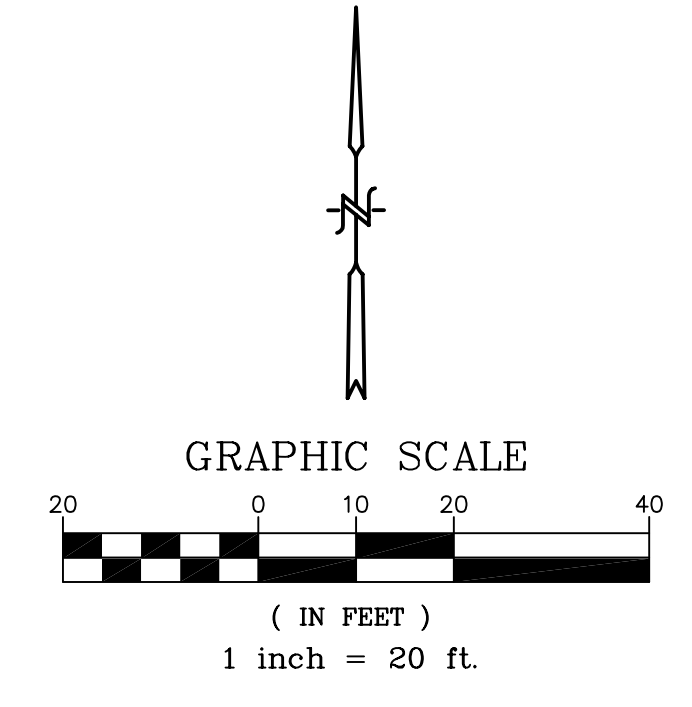


**SECOND LEVEL**

<b>DRAWN BY:</b> JF	<b>JOB No.</b> 1313
<b>DATE:</b> 12/31/08	<b>SHEET</b> 4 of 13

**EXHIBIT**  
**SOLARIS METROPOLITAN DISTRICT NOs. 1-3**  
 PART OF LOT P, BLOCK 5D AND A PART OF TRACT C, VAIL VILLAGE FIRST FILING  
 TOWN OF VAIL, COUNTY OF EAGLE, STATE OF COLORADO

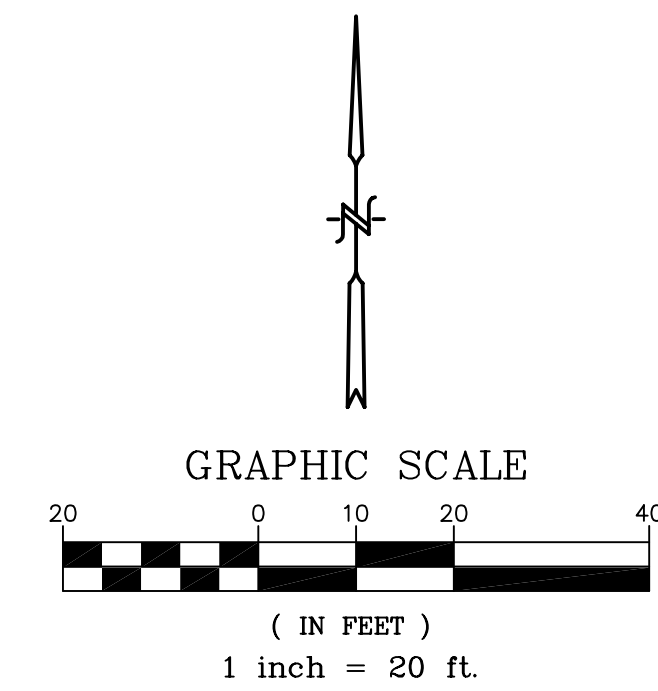
LINE	LENGTH	BEARING
L301	15.74	S10°14'00"W
L302	15.84	S10°14'00"W
L303	15.04	S34°46'00"E
L304	18.20	S10°14'00"W
L305	6.42	S79°46'00"E
L306	24.30	N55°14'00"E
L307	6.08	N34°46'00"W
L308	6.08	S34°46'00"E
L309	6.08	N55°14'00"E
L310	6.33	S55°14'00"W
L311	4.18	N34°46'00"W
L312	20.71	S55°14'00"W
L313	6.89	N34°46'00"W
L314	8.75	N79°46'00"W
L315	8.14	S10°14'00"W
L316	6.00	S34°46'00"E
L317	6.35	S10°14'00"W
L318	6.87	N79°46'00"W
L319	15.15	N79°46'00"W
L320	19.15	N79°46'00"W
L321	4.56	S79°46'00"E
L322	12.20	N10°14'00"E
L323	18.06	N79°46'00"W
L324	6.29	N10°14'00"E
L325	2.68	N79°46'00"W
L326	13.92	N10°14'00"E
L327	1.91	S79°46'00"E
L328	25.67	N10°14'00"E
L329	12.62	S10°14'00"W
L330	9.37	N79°46'00"W
L331	13.06	S10°14'00"W
L332	1.41	S79°46'00"E
L333	13.92	S10°14'00"W
L334	2.53	N79°46'00"W
L335	6.29	S10°14'00"W
L336	18.38	N79°46'00"W
L337	5.36	N10°14'00"E
L338	4.23	N79°46'00"W
L339	18.74	S10°14'00"W
L340	4.57	S79°46'00"E
L341	4.57	N79°46'00"W
L342	9.70	S79°46'00"E
L343	9.58	S10°14'00"E
L344	3.86	N79°46'00"W
L345	8.79	N79°46'00"W
L346	9.89	N79°46'00"W
L347	5.79	N10°14'00"E
L348	3.02	N79°46'00"W
L349	10.77	N10°14'00"E
L350	2.68	S79°46'00"E
L351	4.10	N10°14'00"E
L352	2.68	N79°46'00"W
L353	14.79	N10°14'00"E
L354	2.91	S79°46'00"E
L355	5.22	N10°14'00"E
L356	12.96	S79°46'00"E
L357	18.51	N10°14'00"E
L358	4.86	N79°46'00"E
L359	15.33	N10°14'00"E
L360	5.93	S10°14'00"E
L361	18.07	S79°46'00"E
L362	13.04	N10°14'00"E
L363	22.14	N79°46'00"W
L364	7.67	N55°14'00"E
L365	16.28	N10°14'00"E
L366	10.03	S79°46'00"E
L367	8.78	N10°14'00"E
L368	23.35	S10°14'00"W
L369	18.40	S79°46'00"E



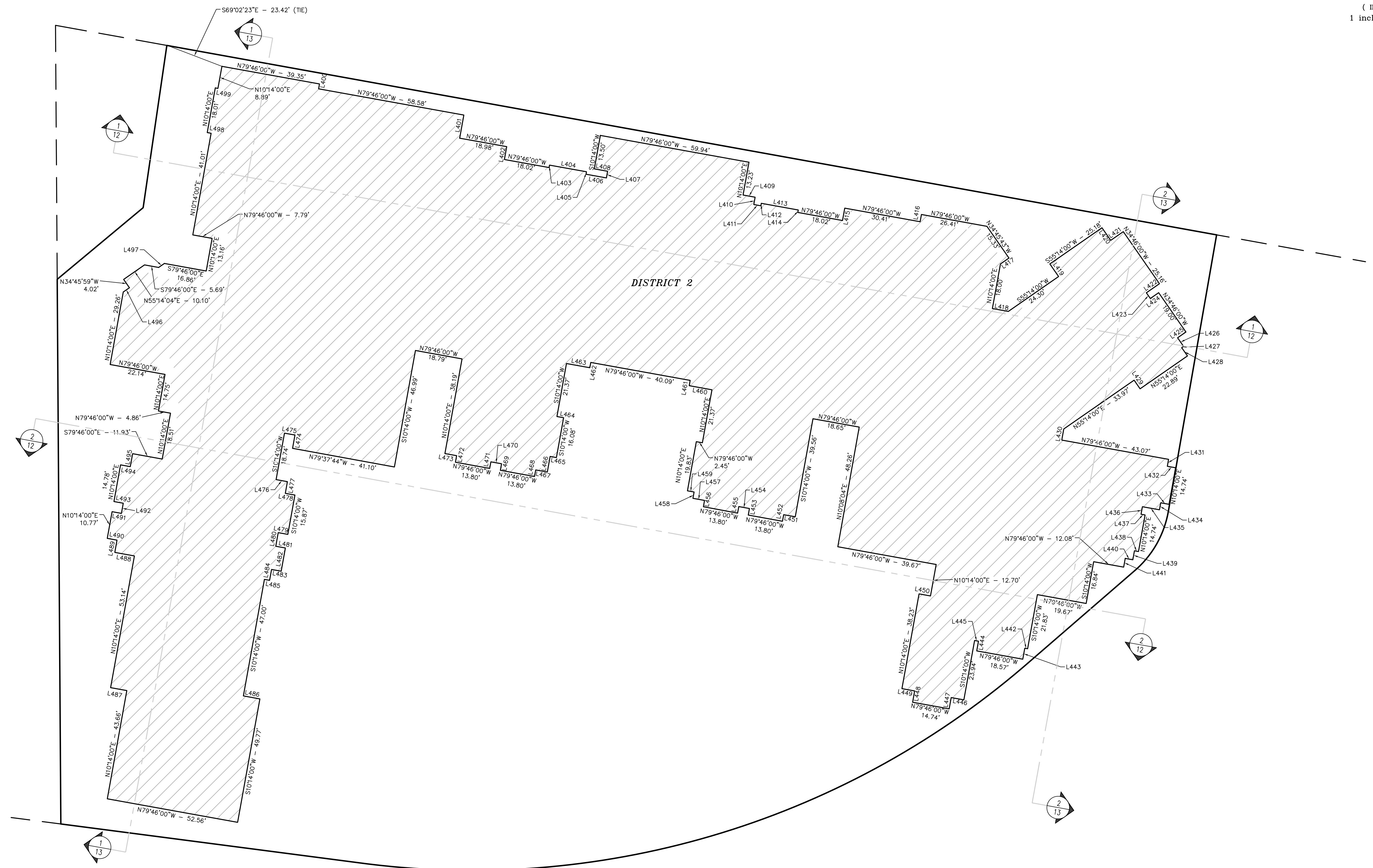
THIRD LEVEL

DRAWN BY: JF	JOB No. 1313
DATE: 12/31/08	SHEET 5 of 13

**EXHIBIT**  
**SOLARIS METROPOLITAN DISTRICT NOs. 1-3**  
 PART OF LOT P, BLOCK 5D AND A PART OF TRACT C, VAIL VILLAGE FIRST FILING  
 TOWN OF VAIL, COUNTY OF EAGLE, STATE OF COLORADO



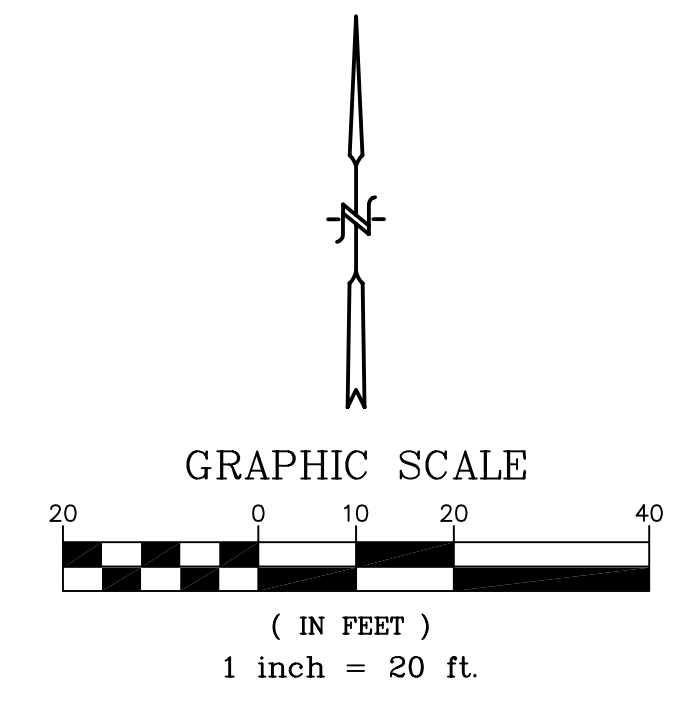
LINE	LENGTH	BEARING
L400	1.96	N10°14'00"E
L401	9.34	N10°14'00"E
L402	5.18	N10°14'00"E
L403	0.99	S10°14'00"W
L404	14.91	N79°46'00"W
L405	0.99	N10°14'00"E
L406	8.21	N79°46'00"W
L407	2.68	S10°14'00"W
L408	5.36	N79°46'00"W
L409	4.87	N79°46'00"W
L410	2.95	N10°14'00"E
L411	2.85	N79°46'00"W
L412	0.99	S10°14'00"W
L413	14.91	N79°46'00"W
L414	0.99	N10°14'00"E
L415	5.00	S10°14'00"W
L416	2.92	S10°14'00"W
L417	4.11	N55°14'00"E
L418	6.42	N79°46'00"W
L419	6.08	S34°46'00"E
L420	6.08	N34°46'00"W
L421	6.08	S55°14'00"W
L422	6.33	N55°14'00"E
L423	2.76	N34°46'00"W
L424	4.03	S55°14'00"W
L425	4.03	N55°14'00"E
L426	4.14	S34°46'00"W
L427	0.89	N55°14'00"E
L428	4.01	N34°46'00"W
L429	4.18	S34°46'00"E
L430	4.49	N10°14'00"E
L431	2.79	N10°14'00"E
L432	3.34	N79°46'00"W
L433	3.34	S79°46'00"E
L434	2.81	N10°14'00"E
L435	6.87	S79°46'00"E
L436	3.04	N10°14'00"E
L437	1.62	N79°46'00"W
L438	1.62	S79°46'00"E
L439	3.64	N10°14'00"E
L440	3.07	S79°46'00"E
L441	3.51	S10°14'00"W
L442	1.16	N79°46'00"W
L443	4.42	S10°14'00"W
L444	3.90	N10°14'00"E
L445	1.56	N79°46'00"W
L446	5.12	N79°46'00"W
L447	4.55	S10°14'00"W
L448	4.56	N10°14'00"E
L449	5.12	N79°46'00"W
L450	4.62	S79°46'00"E
L451	4.68	N79°46'00"W
L452	2.64	S10°14'00"W
L453	2.64	N10°14'00"E
L454	4.30	N79°46'00"W
L455	2.64	S10°14'00"W
L456	2.56	N79°46'00"W
L457	4.88	N79°46'00"W
L458	2.54	N10°14'00"E
L459	2.68	N79°46'00"W
L460	9.18	N79°46'00"W
L461	2.14	N10°14'00"E
L462	2.14	S10°14'00"W
L463	9.41	N79°46'00"W
L464	2.70	S79°46'00"E
L465	2.53	N79°46'00"W
L466	6.29	S10°14'00"W
L467	4.68	N79°46'00"W
L468	2.64	S10°14'00"W
L469	2.64	N10°14'00"E
L470	4.30	N79°46'00"W
L471	2.64	S10°14'00"W
L472	2.64	N10°14'00"E
L473	4.71	N79°46'00"W
L474	5.36	N10°14'00"E
L475	4.23	N79°46'00"W
L476	4.57	S79°46'00"E
L477	4.71	S10°14'00"W
L478	3.88	S79°46'00"E
L479	3.88	N79°46'00"W
L480	5.49	S10°14'00"W
L481	3.88	S79°46'00"E
L482	9.37	S10°14'00"W
L483	3.88	N79°46'00"W
L484	4.37	S10°14'00"W
L485	2.09	N79°46'00"W
L486	6.66	S79°46'00"E
L487	6.54	N79°46'00"W
L488	7.90	N79°46'00"W
L489	4.94	N10°14'00"E
L490	3.93	N79°46'00"W
L491	3.77	S79°46'00"E
L492	4.10	N10°14'00"E
L493	3.77	N79°46'00"W
L494	3.93	S79°46'00"E
L495	5.22	N10°14'00"E
L496	2.97	N55°14'00"E
L497	2.78	N55°14'00"E
L498	1.58	N79°46'00"W
L499	1.07	S79°46'00"E



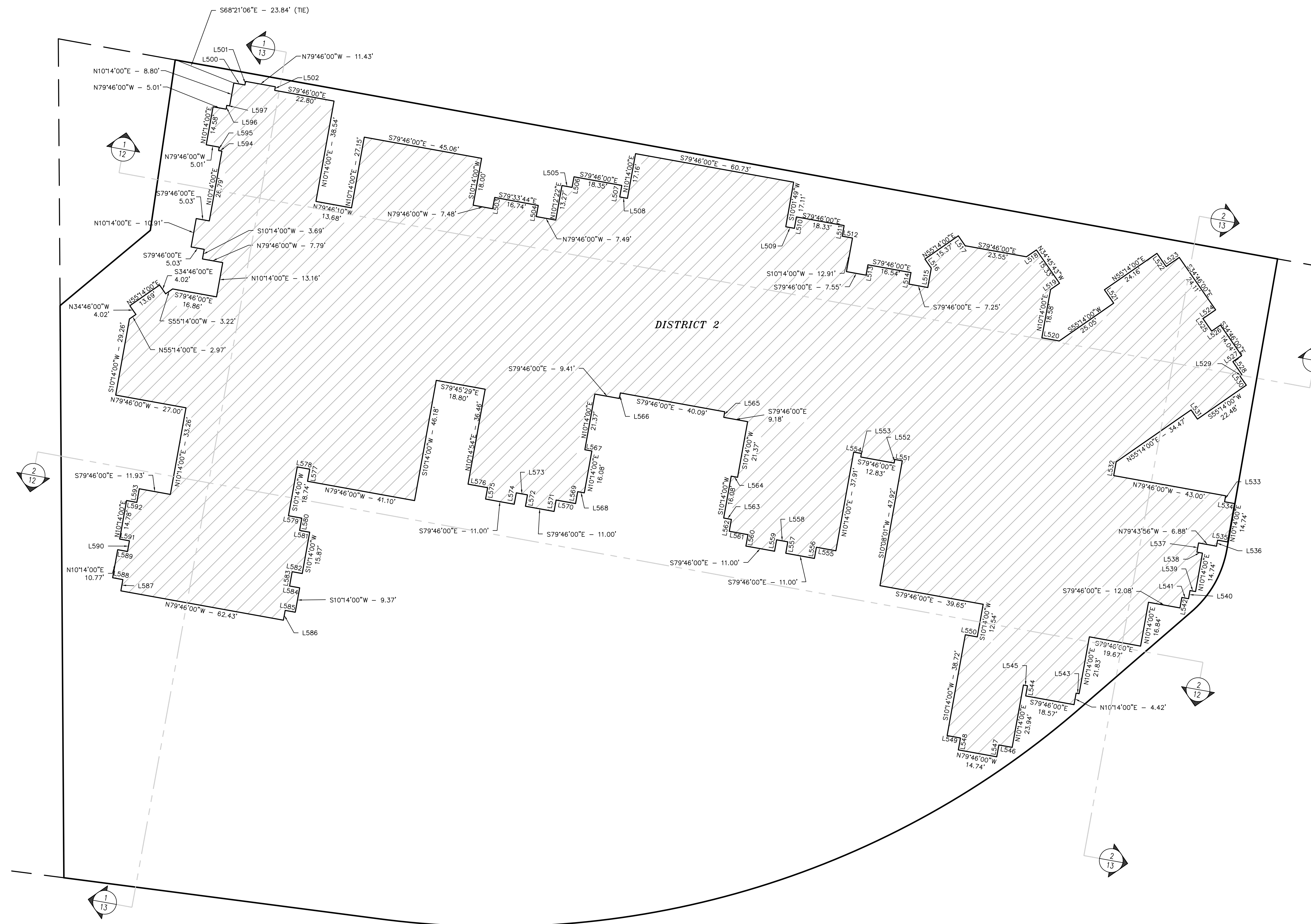
**FOURTH LEVEL**

DRAWN BY: JF	JOB No. 1313
DATE: 12/31/08	SHEET 6 of 13

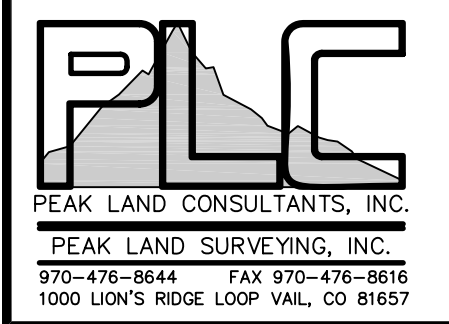
**EXHIBIT**  
**SOLARIS METROPOLITAN DISTRICT NOs. 1-3**  
 PART OF LOT P, BLOCK 5D AND A PART OF TRACT C, VAIL VILLAGE FIRST FILING  
 TOWN OF VAIL, COUNTY OF EAGLE, STATE OF COLORADO



LINE	LENGTH	BEARING
L500	4.26	N79°46'00"W
L501	1.38	S101°4'00"W
L502	1.38	N101°4'00"E
L503	4.34	S101°4'00"W
L504	4.28	N101°4'00"E
L505	3.90	N79°46'00"W
L506	4.07	S101°4'00"W
L507	4.42	N101°4'00"E
L508	2.97	N79°46'00"W
L509	3.31	N79°46'00"W
L510	4.37	S101°4'00"W
L511	4.07	N101°4'00"E
L512	3.93	N79°46'00"W
L513	3.98	S101°4'00"W
L514	4.42	N101°4'00"E
L515	7.41	S101°4'00"W
L516	4.23	S34°46'00"E
L517	4.56	N34°46'00"W
L518	4.56	S55°14'00"W
L519	4.11	N55°14'00"E
L520	6.67	N79°46'00"W
L521	6.15	S34°46'00"E
L522	6.08	N34°46'00"W
L523	6.05	S55°14'00"W
L524	5.81	N55°14'00"E
L525	5.76	N34°46'00"W
L526	4.03	S55°14'00"W
L527	4.03	N55°14'00"E
L528	5.98	N34°46'00"W
L529	0.89	N55°14'00"E
L530	4.22	N34°46'00"W
L531	4.22	S34°46'00"E
L532	5.25	N101°4'00"E
L533	2.30	N101°4'00"E
L534	3.82	N79°46'00"W
L535	3.84	S79°46'00"E
L536	2.32	N101°4'00"E
L537	3.53	N101°4'00"E
L538	2.13	N79°38'53"W
L539	2.12	S79°46'00"E
L540	3.14	N101°4'00"E
L541	2.57	S79°46'00"E
L542	4.00	N101°4'00"E
L543	1.16	S79°46'00"E
L544	3.90	S101°4'00"W
L545	1.56	S79°46'00"E
L546	5.12	S79°46'00"E
L547	4.55	N101°4'00"E
L548	4.56	S101°4'00"W
L549	5.12	S79°46'00"E
L550	4.59	N79°46'00"W
L551	2.87	S79°46'00"E
L552	1.37	N101°4'00"E
L553	1.37	S101°4'00"W
L554	2.95	S79°46'00"E
L555	7.48	S79°46'00"E
L556	4.29	N101°4'00"E
L557	4.37	S101°4'00"W
L558	4.30	S79°46'00"E
L559	4.37	N101°4'00"E
L560	4.31	S101°4'00"W
L561	7.19	S79°46'00"E
L562	4.56	S101°4'00"W
L563	2.97	S79°46'00"E
L564	2.45	N79°46'00"W
L565	2.14	S101°4'00"W
L566	2.14	N101°4'00"E
L567	2.70	N79°46'00"W
L568	2.53	S79°46'00"E
L569	4.56	N101°4'00"E
L570	7.46	S79°46'00"E
L571	4.37	N101°4'00"E
L572	4.37	S101°4'00"W
L573	4.30	S79°46'00"E
L574	4.37	N101°4'00"E
L575	4.37	S101°4'00"W
L576	7.53	S79°46'00"E
L577	4.65	S101°4'00"W
L578	4.79	S79°46'00"E
L579	5.14	N79°46'00"W
L580	4.71	N101°4'00"E
L581	3.88	N79°46'00"W
L582	3.88	S79°46'00"E
L583	5.49	N101°4'00"E
L584	3.88	N79°46'00"W
L585	3.88	S79°46'00"E
L586	3.76	N101°4'00"E
L587	4.33	S101°4'00"W
L588	3.93	S79°46'00"E
L589	3.77	N79°46'00"W
L590	4.10	S101°4'00"W
L591	3.77	S79°46'00"E
L592	3.93	N79°46'00"W
L593	5.22	S101°4'00"W
L594	1.26	S79°46'00"E
L595	1.32	S101°4'00"W
L596	1.45	S101°4'00"W
L597	1.11	N79°46'00"W

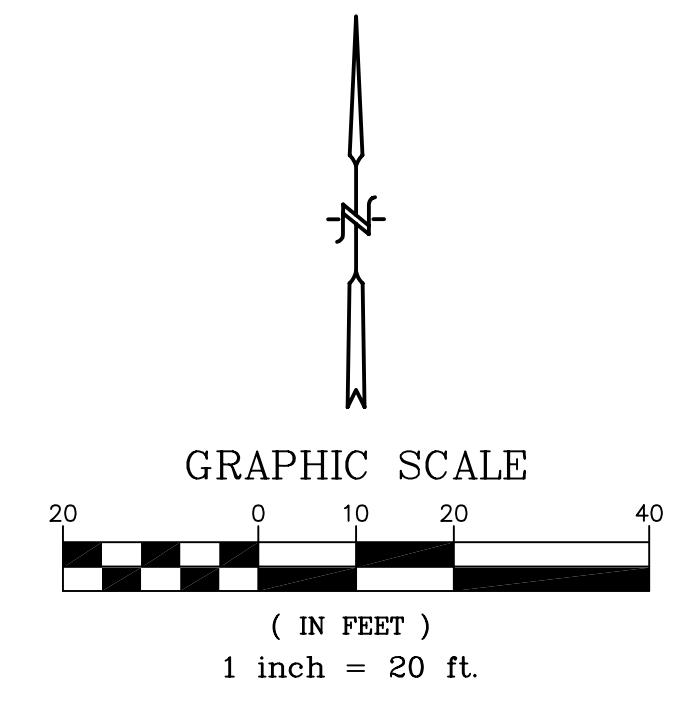


**FIFTH LEVEL**

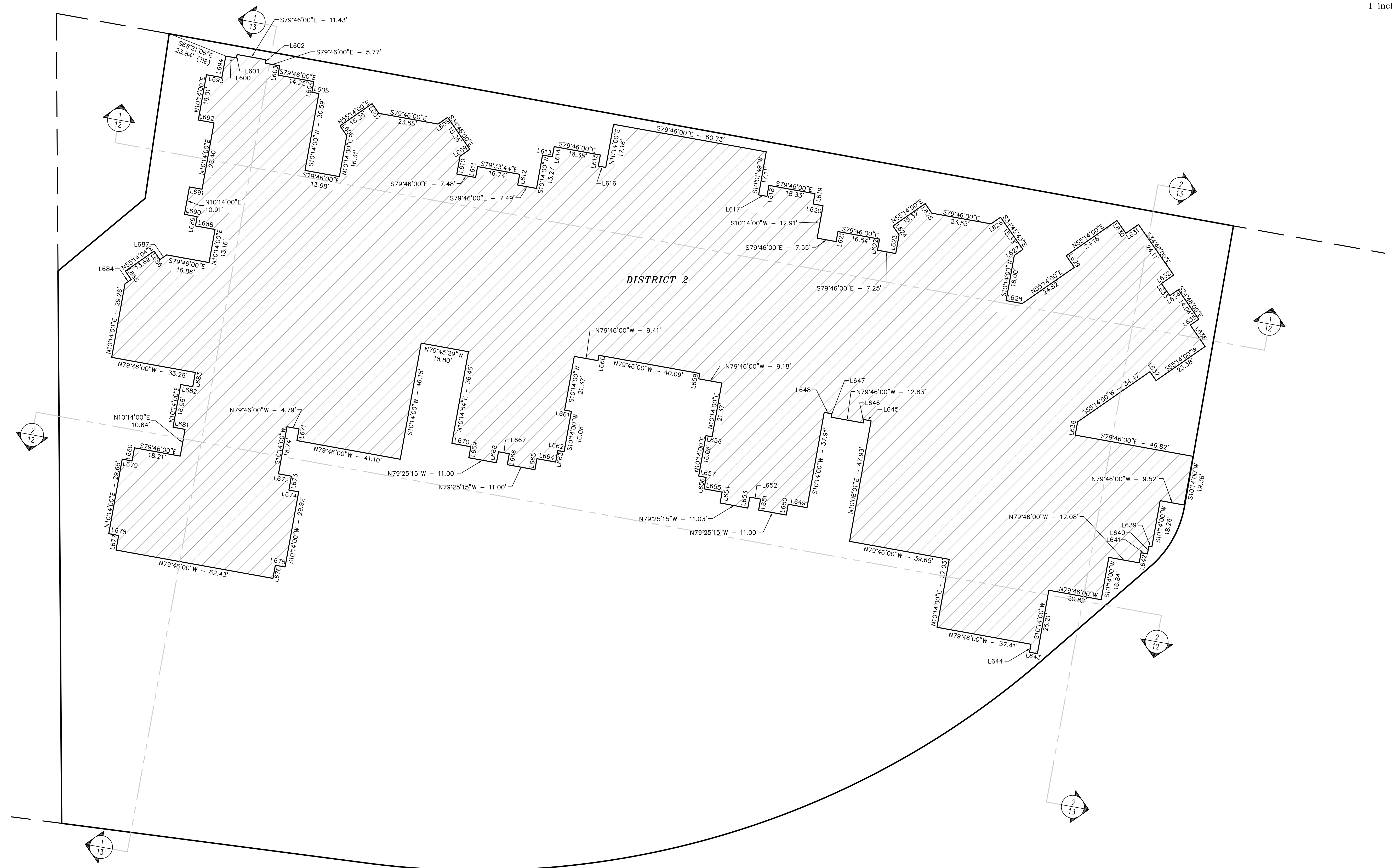


DRAWN BY: JF	JOB No. 1313
DATE: 12/31/08	SHEET 7 of 13

**EXHIBIT**  
**SOLARIS METROPOLITAN DISTRICT NOs. 1-3**  
 PART OF LOT P, BLOCK 5D AND A PART OF TRACT C, VAIL VILLAGE FIRST FILING  
 TOWN OF VAIL, COUNTY OF EAGLE, STATE OF COLORADO



LINE	LENGTH	BEARING
L600	4.26	S79°46'00"E
L601	1.38	N101°4'00"E
L602	1.38	S101°4'00"W
L603	3.70	S101°4'00"W
L604	4.25	S101°4'00"W
L605	2.78	S79°46'00"E
L606	4.63	N34°46'00"W
L607	4.61	S34°46'00"E
L608	4.60	N55°14'00"E
L609	4.67	S55°14'00"W
L610	7.13	S101°4'00"W
L611	4.34	N101°4'00"E
L612	4.28	S101°4'00"W
L613	3.90	S79°46'00"E
L614	4.07	N101°4'00"E
L615	4.42	S101°4'00"W
L616	2.97	S79°46'00"E
L617	3.31	S79°46'00"E
L618	4.37	N101°4'00"E
L619	4.07	S101°4'00"W
L620	3.93	S79°46'00"E
L621	3.98	N101°4'00"E
L622	4.42	S101°4'00"W
L623	7.41	N101°4'00"E
L624	4.23	N34°46'00"W
L625	4.56	S34°46'00"E
L626	4.56	N55°14'00"E
L627	4.11	S55°14'00"W
L628	6.42	S79°46'00"E
L629	5.56	N34°46'00"W
L630	6.08	S34°46'00"E
L631	6.05	N55°14'00"E
L632	5.81	S55°14'00"W
L633	5.76	S34°46'00"E
L634	4.03	N55°14'00"E
L635	4.03	S55°14'00"W
L636	10.20	S34°46'00"E
L637	4.22	N34°46'00"W
L638	5.25	S101°4'00"W
L639	1.19	N79°46'00"W
L640	3.14	S101°4'00"W
L641	2.57	N79°46'00"W
L642	4.00	S101°4'00"W
L643	3.11	N79°46'00"W
L644	3.17	N101°4'00"E
L645	2.87	N79°46'00"W
L646	1.37	S101°4'00"W
L647	1.37	N101°4'00"E
L648	2.95	N79°46'00"W
L649	7.48	N79°46'00"W
L650	4.29	S101°4'00"W
L651	4.37	N101°4'00"E
L652	4.30	N79°46'00"W
L653	4.37	S101°4'00"W
L654	4.31	N101°4'00"E
L655	7.19	N79°46'00"W
L656	4.56	N101°4'00"E
L657	2.97	N79°46'00"W
L658	2.45	S79°46'00"E
L659	2.14	N101°4'00"E
L660	2.14	S101°4'00"W
L661	2.70	S79°46'00"E
L662	2.53	N79°46'00"W
L663	4.56	S101°4'00"W
L664	7.46	N79°46'00"W
L665	4.37	S101°4'00"W
L666	4.37	N101°4'00"E
L667	4.30	N79°46'00"W
L668	4.37	S101°4'00"W
L669	4.37	N101°4'00"E
L670	7.53	N79°46'00"W
L671	4.65	N101°4'00"E
L672	5.14	S79°46'00"E
L673	5.53	S101°4'00"W
L674	3.88	S79°46'00"E
L675	3.88	N79°46'00"W
L676	5.22	S101°4'00"W
L677	5.79	N101°4'00"E
L678	3.93	N79°46'00"W
L679	3.93	S79°46'00"E
L680	5.22	N101°4'00"E
L681	4.78	N79°46'00"W
L682	4.78	S79°46'00"E
L683	5.65	N101°4'00"E
L684	2.97	N55°14'00"E
L685	4.02	N34°46'00"W
L686	4.02	S34°46'00"E
L687	3.22	N55°14'00"E
L688	7.79	N79°46'00"W
L689	3.69	N101°4'00"E
L690	5.03	N79°46'00"W
L691	5.03	S79°46'00"E
L692	6.27	N79°46'00"W
L693	6.12	S79°46'00"E
L694	8.54	N101°4'00"E



SIXTH LEVEL

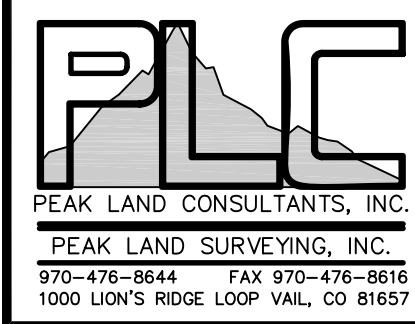
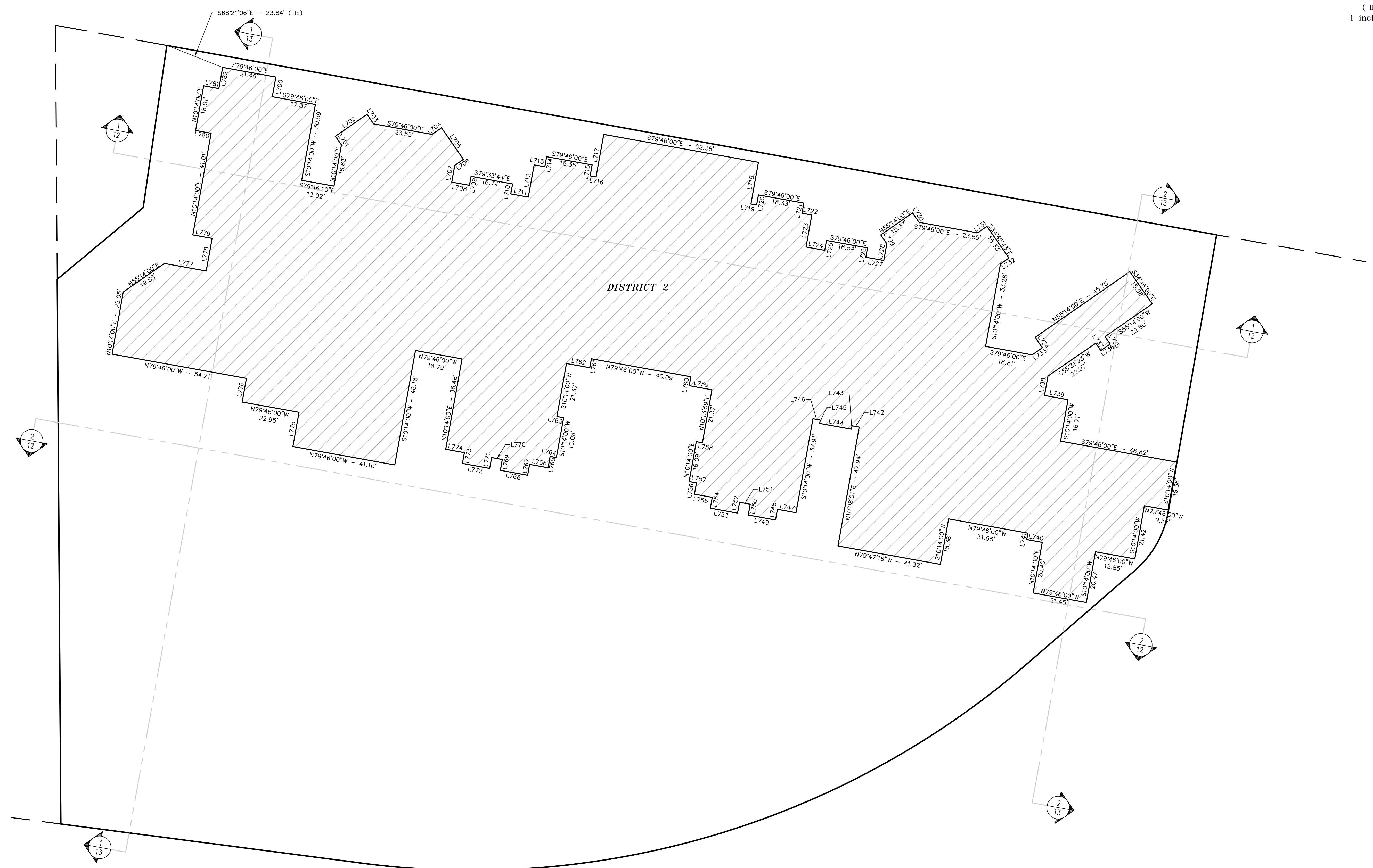
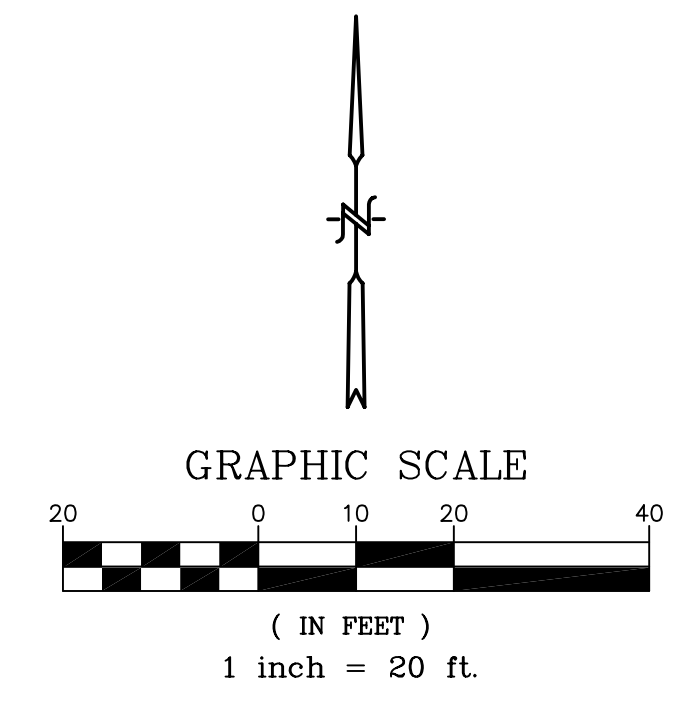


DRAWN BY: JF	JOB No. 1313
DATE: 12/31/08	SHEET 8 of 13



**EXHIBIT**  
**SOLARIS METROPOLITAN DISTRICT NOs. 1-3**  
 PART OF LOT P, BLOCK 5D AND A PART OF TRACT C, VAIL VILLAGE FIRST FILING  
 TOWN OF VAIL, COUNTY OF EAGLE, STATE OF COLORADO

LINE	LENGTH	BEARING
L700	7.95	S10°14'00"W
L701	4.18	N34°46'00"W
L702	15.26	N55°14'00"E
L703	4.61	S34°46'00"E
L704	4.60	N55°14'00"E
L705	15.25	S34°46'00"E
L706	4.18	S55°14'00"W
L707	6.77	S10°14'00"W
L708	7.14	S79°46'00"E
L709	3.64	N10°14'00"E
L710	4.01	S10°14'00"W
L711	7.08	S79°46'00"E
L712	13.00	N10°14'00"E
L713	4.30	S79°46'00"E
L714	4.07	N10°14'00"E
L715	4.42	S10°14'00"W
L716	2.39	S79°46'00"E
L717	17.16	N10°14'00"E
L718	16.81	S10°14'00"W
L719	2.30	S79°46'00"E
L720	4.07	N10°14'00"E
L721	4.07	S10°14'00"W
L722	3.93	S79°46'00"E
L723	12.91	S10°14'00"W
L724	7.55	S79°46'00"E
L725	3.98	N10°14'00"E
L726	3.78	S10°14'00"W
L727	7.25	S79°46'00"E
L728	6.77	N10°14'00"E
L729	4.23	N34°46'00"W
L730	4.56	S34°46'00"E
L731	4.56	N55°14'00"E
L732	4.11	S55°14'00"W
L733	4.92	N55°14'00"E
L734	5.04	N34°46'00"W
L735	3.58	S34°46'00"E
L736	4.55	S55°14'00"W
L737	3.52	N34°46'00"W
L738	7.84	S10°14'00"W
L739	9.50	S79°46'00"E
L740	6.28	N79°46'00"W
L741	2.57	N10°14'00"E
L742	2.87	N79°46'00"W
L743	1.37	S10°14'00"W
L744	12.83	N79°46'00"W
L745	1.37	N10°14'00"E
L746	2.95	N79°46'00"W
L747	7.48	N79°46'00"W
L748	4.29	S10°14'00"W
L749	11.00	N79°46'00"W
L750	4.37	N10°14'00"E
L751	4.30	N79°46'00"W
L752	4.37	S10°14'00"W
L753	11.00	N79°25'15"W
L754	4.31	N10°14'00"E
L755	7.19	N79°46'00"W
L756	4.56	N10°14'00"E
L757	2.97	N79°46'00"W
L758	2.45	S79°46'00"E
L759	9.18	N79°46'00"W
L760	3.62	S10°14'00"E
L761	3.62	S10°14'00"W
L762	9.41	N79°46'00"W
L763	2.70	S79°46'00"E
L764	2.53	N79°46'00"W
L765	4.56	S10°14'00"W
L766	7.46	N79°46'00"W
L767	4.37	S10°14'00"W
L768	11.00	N79°46'00"W
L769	4.37	N10°14'00"E
L770	4.30	N79°46'00"W
L771	4.37	S10°14'00"W
L772	11.00	N79°46'00"W
L773	4.37	N10°14'00"E
L774	7.53	N79°46'00"W
L775	13.82	N10°14'00"E
L776	9.56	N10°14'00"E
L777	16.86	S79°46'00"E
L778	13.16	N10°14'00"E
L779	7.79	N79°46'00"W
L780	6.27	N79°46'00"W
L781	6.12	S79°46'00"E
L782	8.54	N10°14'00"E

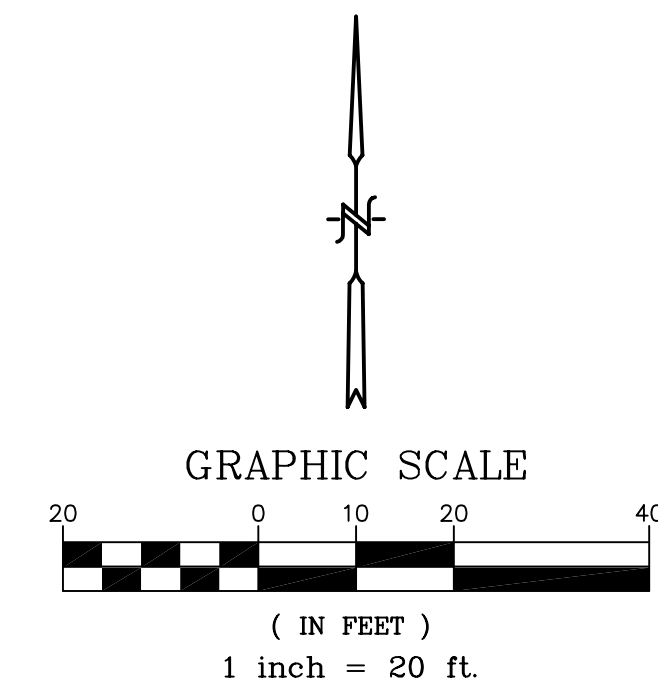


PEAK LAND CONSULTANTS, INC.  
 PEAK LAND SURVEYING, INC.  
 970-476-8844 FAX 970-476-8816  
 1000 LION'S RIDGE LOOP VAIL, CO 81657

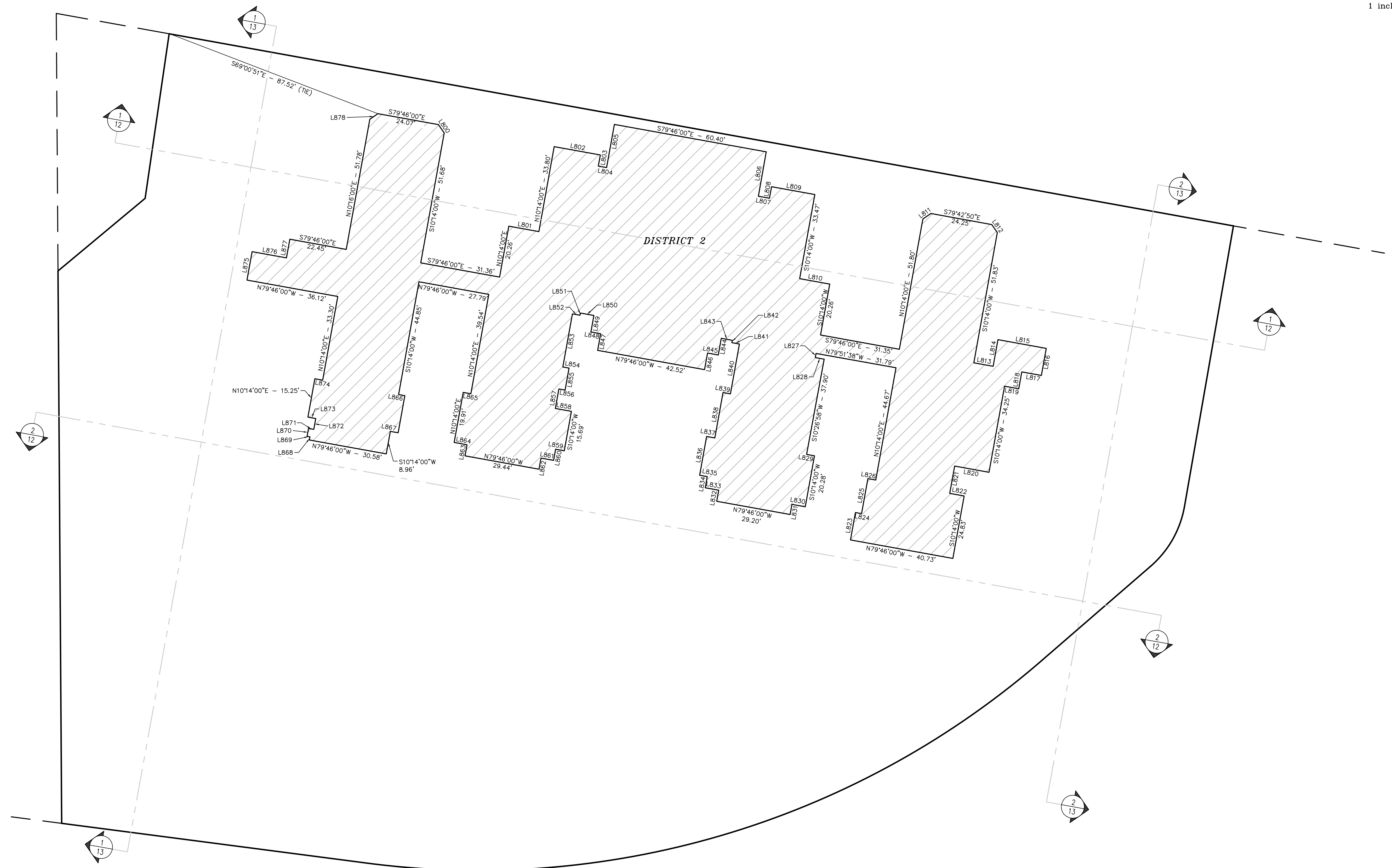
SEVENTH LEVEL

DRAWN BY: JF	JOB No. 1313
DATE: 12/31/08	SHEET 9 of 13

**EXHIBIT**  
**SOLARIS METROPOLITAN DISTRICT NOs. 1-3**  
 PART OF LOT P, BLOCK 5D AND A PART OF TRACT C, VAIL VILLAGE FIRST FILING  
 TOWN OF VAIL, COUNTY OF EAGLE, STATE OF COLORADO



LINE	LENGTH	BEARING
L800	3.99	S34°46'00"E
L801	11.96	S79°46'00"E
L802	18.35	S79°46'00"E
L803	4.42	S101°4'00"W
L804	3.30	S79°46'00"E
L805	17.16	N101°4'00"E
L806	17.64	S101°4'00"W
L807	4.41	S79°46'00"E
L808	4.57	N101°4'00"E
L809	17.23	S79°46'00"E
L810	11.97	S79°46'00"E
L811	3.80	N55°14'00"E
L812	3.80	S34°46'00"E
L813	7.70	S79°46'00"E
L814	10.60	N101°4'00"E
L815	19.22	S79°46'00"E
L816	10.77	S101°4'00"W
L817	7.79	N79°46'00"W
L818	6.70	S101°4'00"W
L819	5.64	N79°46'00"W
L820	13.68	N79°46'00"W
L821	10.86	S101°4'00"W
L822	5.74	S79°46'00"E
L823	10.90	N101°4'00"E
L824	2.45	S79°46'00"E
L825	13.93	N101°4'00"E
L826	3.11	S79°46'00"E
L827	1.65	S101°4'00"W
L828	3.52	S79°46'00"E
L829	3.13	S79°46'00"E
L830	5.31	N79°46'00"W
L831	4.04	S101°4'00"W
L832	4.41	N101°4'00"E
L833	5.35	N79°46'00"W
L834	4.44	N101°4'00"E
L835	3.04	N79°46'00"W
L836	15.42	N101°4'00"E
L837	3.26	S79°46'00"E
L838	18.07	N101°4'00"E
L839	2.94	S79°46'00"E
L840	19.82	N101°4'00"E
L841	2.99	N79°46'00"W
L842	0.94	N101°4'00"E
L843	4.39	N79°46'00"W
L844	6.62	S101°4'00"W
L845	4.28	N79°46'00"W
L846	6.61	S101°4'00"W
L847	6.61	N101°4'00"E
L848	3.88	N79°46'00"W
L849	6.56	N101°4'00"E
L850	5.37	N79°46'00"W
L851	0.87	S101°4'00"W
L852	3.01	N79°46'00"W
L853	21.12	S101°4'00"W
L854	2.48	S79°46'00"E
L855	8.74	S101°4'00"W
L856	2.48	N79°46'00"W
L857	7.75	S101°4'00"E
L858	6.39	S79°46'00"E
L859	3.46	N79°46'00"W
L860	4.44	S101°4'00"W
L861	5.00	N79°46'00"W
L862	4.41	S101°4'00"W
L863	4.41	N101°4'00"E
L864	5.11	N79°46'00"W
L865	3.05	S79°46'00"E
L866	2.48	S79°46'00"E
L867	3.11	N79°46'00"W
L868	1.25	N101°4'00"E
L869	1.14	N79°46'00"W
L870	3.17	N101°4'00"E
L871	2.10	S79°46'00"E
L872	4.30	N101°4'00"E
L873	3.11	N79°46'00"W
L874	3.11	S79°46'00"E
L875	11.31	N101°4'00"E
L876	13.67	S79°46'00"E
L877	7.42	N101°4'00"E
L878	3.84	N55°14'00"E

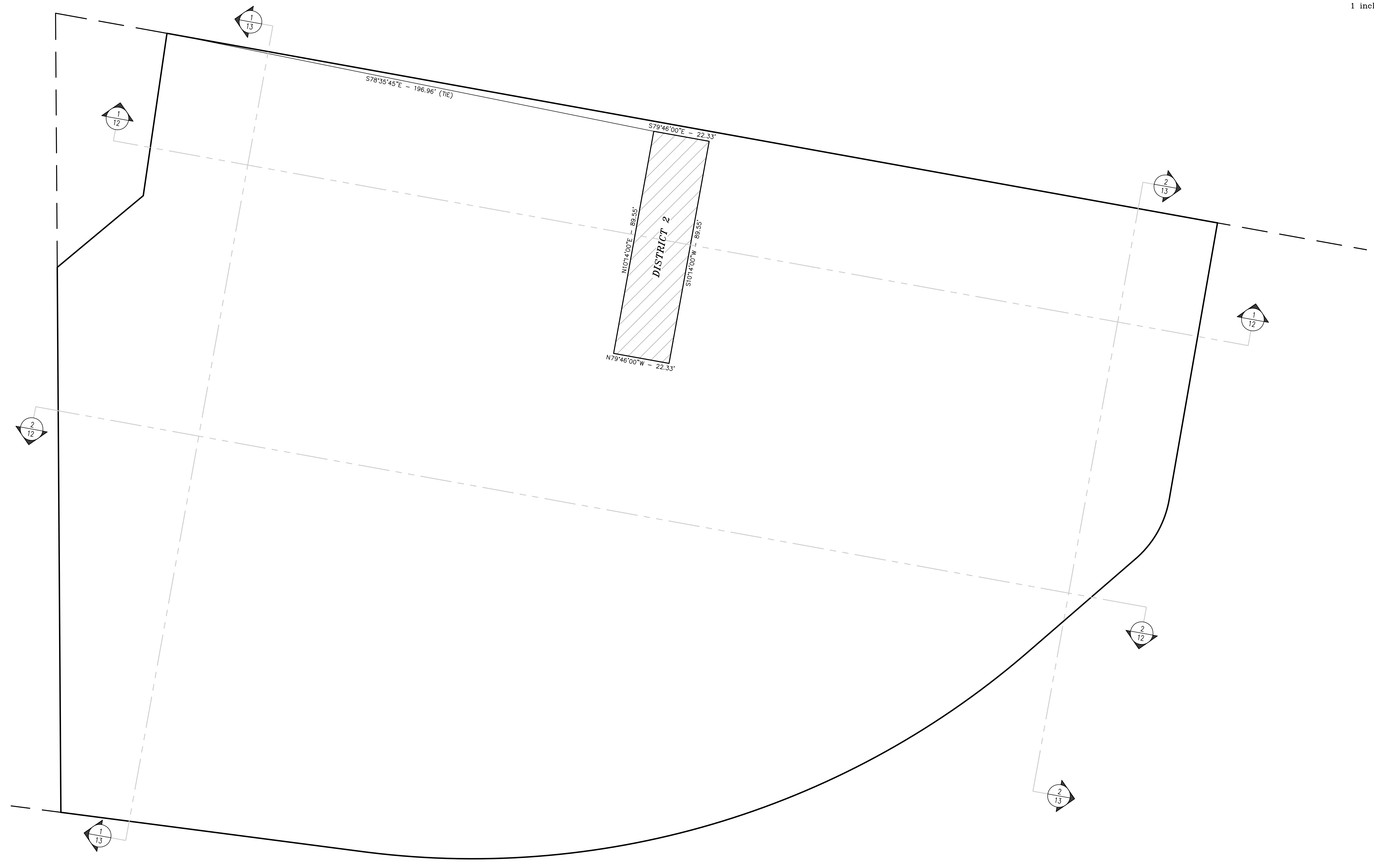
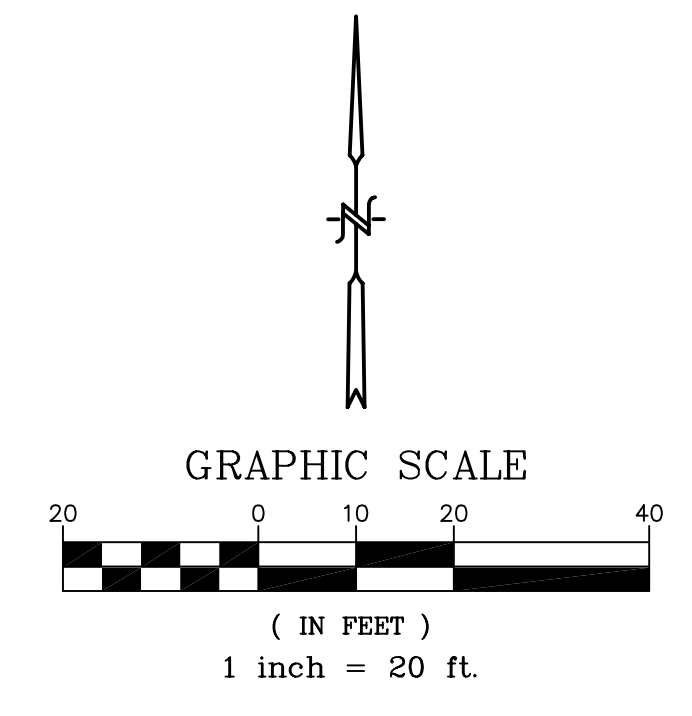


**EIGHTH LEVEL**

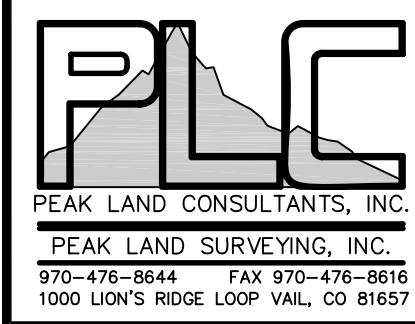


DRAWN BY: JF	JOB No. 1313
DATE: 12/31/08	SHEET 10 of 13

*EXHIBIT*  
**SOLARIS METROPOLITAN DISTRICT NOs. 1-3**  
 PART OF LOT P, BLOCK 5D AND A PART OF TRACT C, VAIL VILLAGE FIRST FILING  
 TOWN OF VAIL, COUNTY OF EAGLE, STATE OF COLORADO

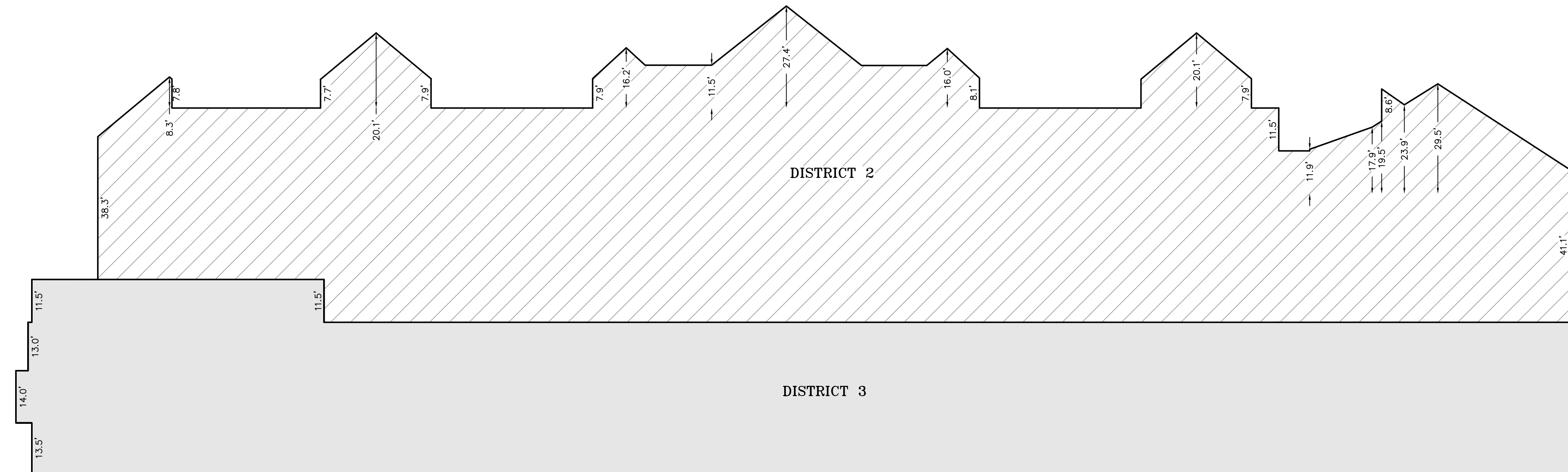


*NINTH LEVEL*

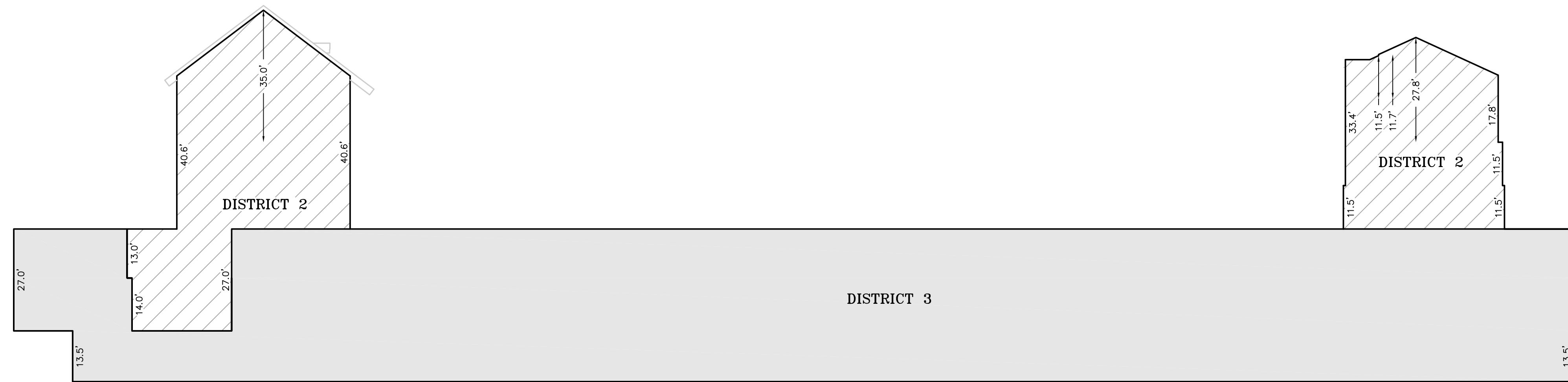


DRAWN BY: JF	JOB No. 1313
DATE: 12/31/08	SHEET 11 of 13

*EXHIBIT*  
**SOLARIS METROPOLITAN DISTRICT NOs. 1-3**  
 PART OF LOT P, BLOCK 5D AND A PART OF TRACT C, VAIL VILLAGE FIRST FILING  
 TOWN OF VAIL, COUNTY OF EAGLE, STATE OF COLORADO



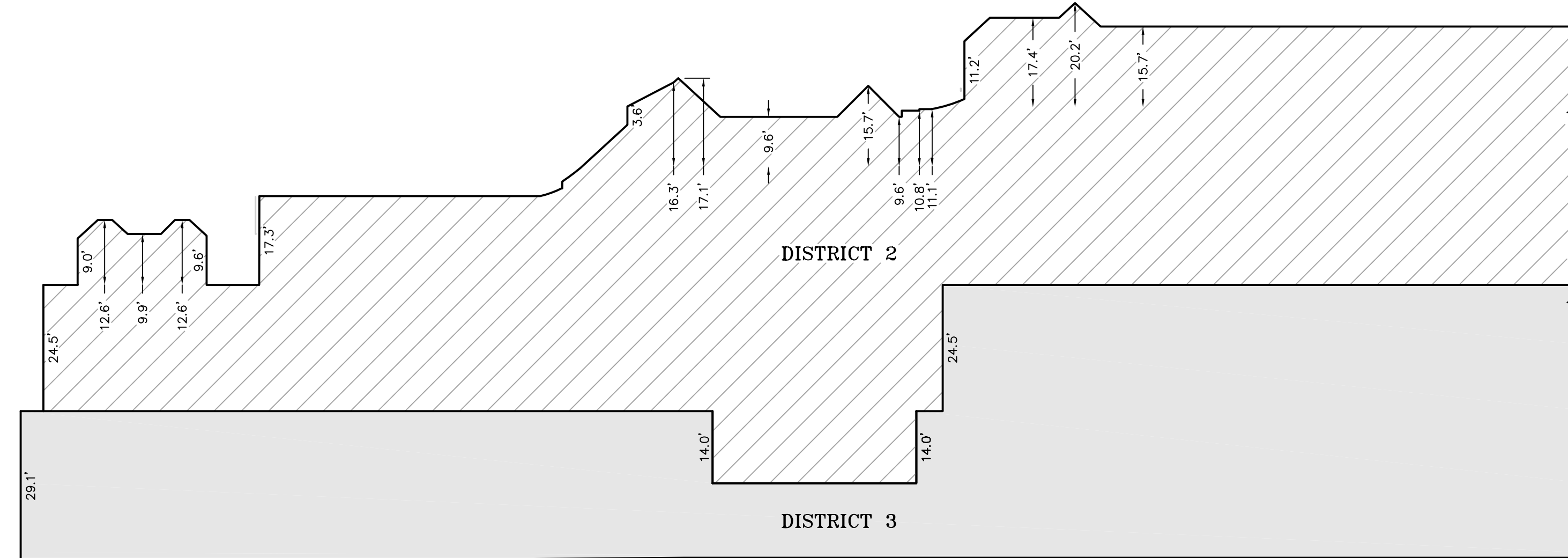
1  
12  
SECTION DETAIL  
SCALE: 1" = 20'



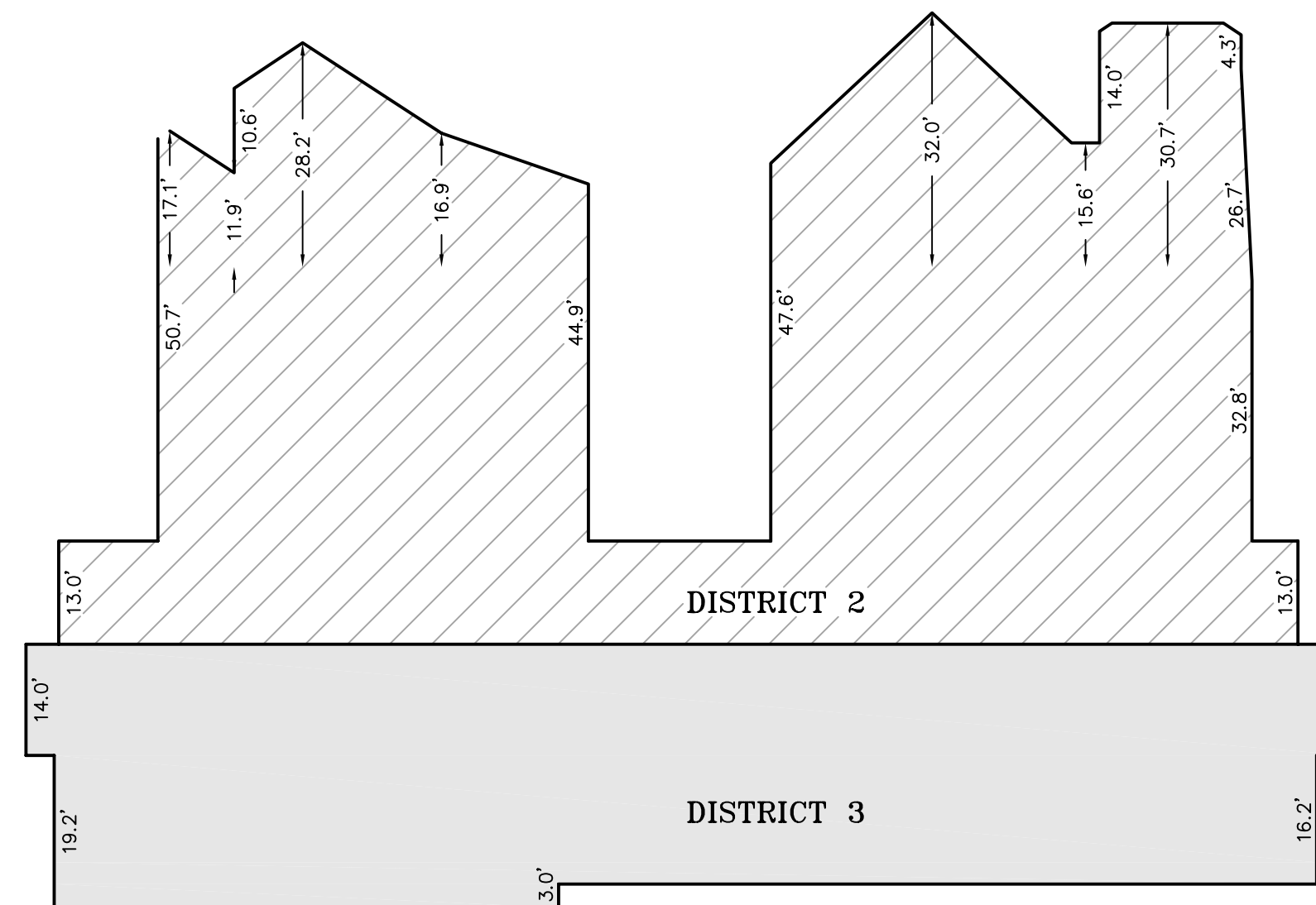
2  
12  
SECTION DETAIL  
SCALE: 1" = 20'

*CROSS SECTIONS*

*EXHIBIT*  
**SOLARIS METROPOLITAN DISTRICT NOs. 1-3**  
 PART OF LOT P, BLOCK 5D AND A PART OF TRACT C, VAIL VILLAGE FIRST FILING  
 TOWN OF VAIL, COUNTY OF EAGLE, STATE OF COLORADO



①  
 SECTION DETAIL  
 SCALE: 1" = 20'



②  
 SECTION DETAIL  
 SCALE: 1" = 20'

*CROSS SECTIONS*