

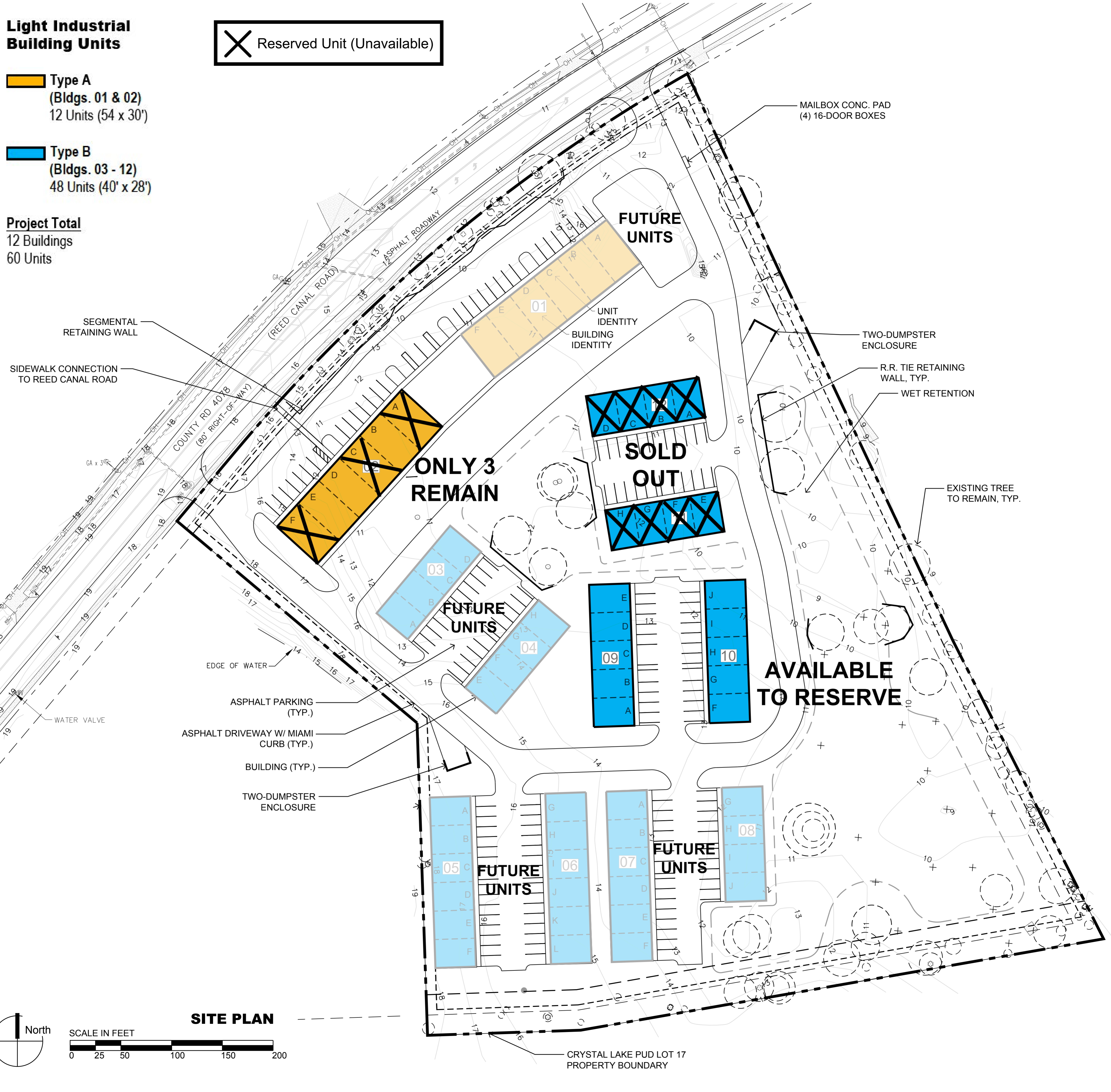
**Light Industrial Building Units**

**Type A**  
(Bldgs. 01 & 02)  
12 Units (54' x 30')

**Type B**  
(Bldgs. 03 - 12)  
48 Units (40' x 28')

**Project Total**  
12 Buildings  
60 Units

**X** Reserved Unit (Unavailable)



SEGMENTAL RETAINING WALL

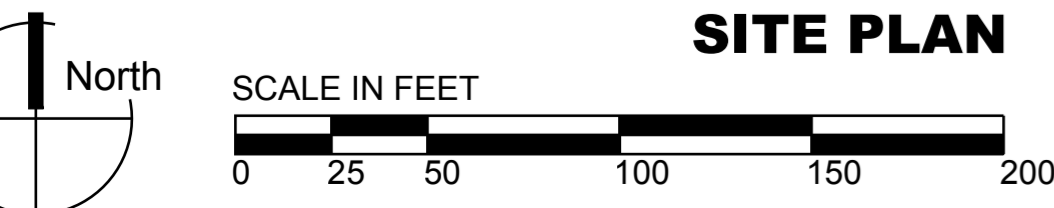
SIDEWALK CONNECTION TO REED CANAL ROAD

COUNTY RD 4078 (80' RIGHT-OF-WAY)

EDGE OF WATER

WATER VALVE

ASPHALT PARKING (TYP.)  
ASPHALT DRIVEWAY W/ MIAMI CURB (TYP.)  
BUILDING (TYP.)  
TWO-DUMPSTER ENCLOSURE



**SITE PLAN**

**FUTURE UNITS**

UNIT IDENTITY  
BUILDING IDENTITY

**ONLY 3 REMAIN**

**SOLD OUT**

**FUTURE UNITS**

**FUTURE UNITS**

**FUTURE UNITS**

**FUTURE UNITS**

**AVAILABLE TO RESERVE**

MAILBOX CONC. PAD (4) 16-DOOR BOXES

TWO-DUMPSTER ENCLOSURE

R.R. TIE RETAINING WALL, TYP.

WET RETENTION

EXISTING TREE TO REMAIN, TYP.

CRYSTAL LAKE PUD LOT 17 PROPERTY BOUNDARY