



Lions Clubs International  
**FOUNDATION**

# LCIF Information

2025 DGE/VDGE Training



Lions Clubs International  
**FOUNDATION**

# What I'm Gonna Tell You

- MD 17 LCIF Coordinators
- What You Should Already Know
- Useful Information for Club Visits
- Other Interesting LCIF Information
- LCIF Grants Toolkit

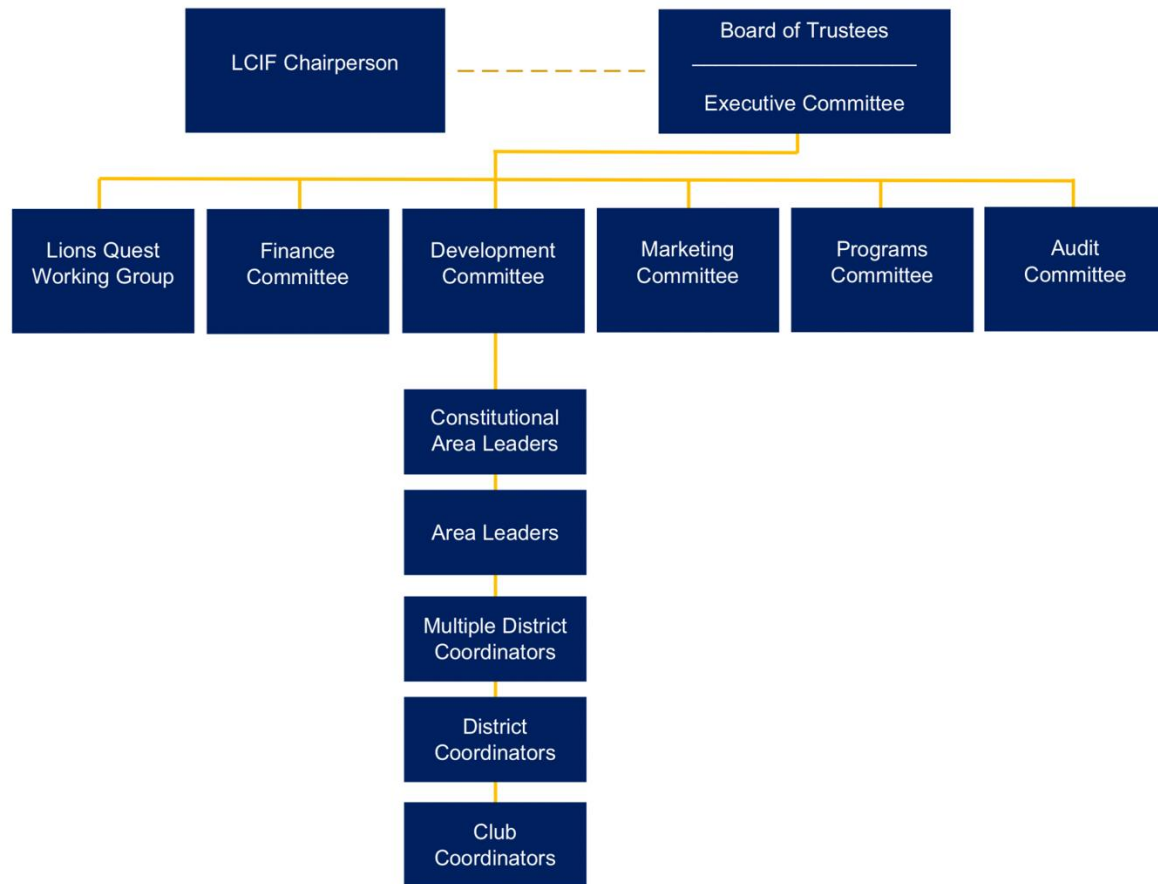


Lions Clubs International  
**FOUNDATION**

# Your LCIF Coordinators

- See **page 39** of your MD-17 Quick Reference Guide!
- See backside of the Kansas LCIF brochure.

# LCIF Leaders



## Multiple District Coordinators (3-year positions)

They are nominated by the LCIF area leader responsible for the multiple district, in consultation with the trustee representing the multiple district's constitutional area, as well as in consultation with the local council of governors and other leaders, when appropriate. They are appointed by the LCIF chairperson.

## District Coordinators (3-year positions)

They are nominated by the LCIF multiple district coordinator responsible for the district, in consultation with the district governor team and other leaders, when appropriate. They are appointed by the LCIF chairperson.



Lions Clubs International  
**FOUNDATION**

# What You Should Already Know

- What LCIF is. How fits into LI. Tax status of LCI and LCIF. (**page 49** of your MD-17 Quick Reference Guide).
- Why support LCIF. 100% of donated funds used for community needs.  
\$75.00
- Five LCI Global Causes (**Childhood Cancer, Diabetes, Environment, Hunger, Vision**).
- Three additional LCIF Expanded Focus Areas (**Disaster Relief, humanitarian Efforts, Youth**).
- General information about how much Kansas Lions have contributed and how much we've received in grants (**page 42** of your MD-17 Quick Reference Guide) since 1968. Most recent data:

Kansas Lions donated \$2.5 million. Grants received \$1.4 million.



Lions Clubs International  
**FOUNDATION**

# Useful Information for Club Visits

- **Can you tell an LCIF grant story?**

- District goal(s) related to LCIF: \$\$ to raise, % clubs to participate, % individuals to be recurring donors, etc.
- # of MJF/PMJF recipients. 1,606/106. Your DCs can give you district numbers. Please DO NOT refer to the MJF/PMJF as an award. It's an honor bestowed by LCIF for a donation. Emphasize that it doesn't have to be a club donation.
- Tell-a-Thon 5.0 (Watch and Donate): June 1<sup>st</sup>. Stories of service, music, entertainment, and special celebrity cameos. 1.0 in 2022 (Goal \$25K, Raised \$2M).
- Grant types: See **page 40** of your Quick Reference Guide.
- Disaster Relief Grant: Most common grant we've used in Kansas. Most recent was a \$10K Covid relief grant used by 17-K during the pandemic.
- District and Club Impact Grant: 15% return on **unrestricted** donations over \$5K for club and \$10 for district. In 2021-2022, 5 clubs in the State should have qualified. All three districts should have received or will receive some. **See next slide.**



# Examples of DCGs in Action

- Books for 12 Head Start Programs.
- Equipment for Boys Behavioral Facility.
- Benches for Veterans Memorial.
- Spot vision screener replacement.
- Spot screener insurance.
- Lions concrete cornhole game.



# Lions Clubs International FOUNDATION

		MD Total	17K	17A	17N	MD17		PMA = Per Member Average
2024-2025 incl Model Club		\$194,792	\$57,276	\$68,979	\$68,537		LCIF Stretch Goals	\$49.58 PMA
		\$119,869	\$35,247	\$42,448	\$42,174		LCIF Goals	\$30.51 PMA
		\$120,036	\$14,038	\$46,080	\$31,832	\$28,086	Donations as of 2 Apr 25	
		106 of 200 (53%)	20 of 64 (31%)	39 of 70 (56%)	47 of 66 (71%)		Clubs participating	
		Donation sources: clubs - 46%, individuals - 54%		3.2% of individual Lions have donated				
2023-2024 incl Model Clubs		\$112,455	\$33,426	\$39,960	\$39,069		LCIF Goals	
		\$117,798	\$16,130	\$70,175	\$29,493	\$2,000	Donations as of 30 Jun 24	
		117 of 203 (58%)	25 of 64 (39%)	37 of 70 (53%)	56 of 68 (82%)		Clubs participating	
		Donation sources: clubs - 33%, individuals - 67%		2.8% of individual Lions have donated				
2022-2023 incl Model Clubs		\$106,846	\$32,691	\$38,582	\$35,573		LCIF Goals	
		\$148,784	\$18,884	\$108,983	\$20,917		Donations as of 30 Jun 23	
		108 of 204 (53%)	24 of 65 (37%)	41 of 71 (58%)	43 of 68 (63%)		Clubs participating	
Campaign 100	C100 Goals	\$839,240	\$258,213	\$300,252	\$280,775		Data from LCIF Report Card.	
		\$485,898	\$79,783	\$314,486	\$88,029	\$3,600	Data from MyLCI	
	2023-2024 (Model Clubs only)			\$6,124			Donations as of 18 Sep 23	
				2				
	2022-2023 (Model Clubs only)			\$37,534	\$3,462		Donations as of 30 Jun 23	
				4	1			
	2021-2022	\$158,590	\$25,909	\$106,393	\$24,788	\$1,500	Donations as of 30 Jun 2022	
		142 of 214 (66%)	31 of 72 (43%)	73 of 73 (100%)	40 of 69 (58%)		Clubs participating	
	2020-2021	\$76,755	\$12,585	\$51,320	\$12,850		Donations as of 30 Jun 2021	
		98 of 216 (45%)	25 of 72 (35%)	42 of 73 (58%)	31 of 71 (44%)		Clubs participating	





Lions Clubs International  
**FOUNDATION**

Campaign 100 Model Clubs				
Dodge City			200% Model Club	\$17,937
Goodland				\$20,446
	Lansing		400% Model Club	\$82,378
	Baldwin City		Baldwin City Visionary Model Club	\$46,108
	Silver Lake		Silver Lake also Model Club in SightFirst and SightFirst II.	\$5,008
	Miami County Traveling		200% Model Club	\$11,282
	Topeka Sunflower			\$16,816
	Leavenworth			\$76,522
	Topeka		Committed April 2022	\$9,500
	Manhattan Sunflower		Visionary Model Club	\$23,187
		Towanda	200% Model Club	\$13,571



**Lions Clubs International**  
**FOUNDATION**

# Other Interesting LCIF Information

(if you can work them into a conversation)

- Since 1968, \$1.2B grants awarded. \$148M in U.S.
- Only grant a club can apply for is the District and Club Community Impact Grant.
- Recognition: Presidential Supporter pins (\$50-\$99, \$100-\$199, \$200+), MJF/PMJF for individuals, Plaques for Clubs (banner patch and yearly chevron), 100% MJF banner patch, 100% contributing members banner patch, Club members PMA, and others.



**Lions Clubs International**  
**FOUNDATION**

# LCIF Grants Toolkit

- In [www.lionsclubs.org](http://www.lionsclubs.org), query for LCIF Grants Toolkit.
  - Types of and information about grants.
  - Resources for applicants and grantees.
- Familiarize yourself with the procedures.
- Have your LCIF Coordinators be the expert, so they can help you efficiently and effectively.
- LCIF staff will be your best friends if you need a grant.
- Also, see the LCIF brochure for list of grant types.



Lions Clubs International  
**FOUNDATION**

# What I Told You

- MD 17 LCIF Coordinators
- What You Should Already Know
- Useful Information for Club Visits
- Other Interesting LCIF Information
- LCIF Grants Toolkit



**Lions Clubs International**  
**FOUNDATION**

Questions?