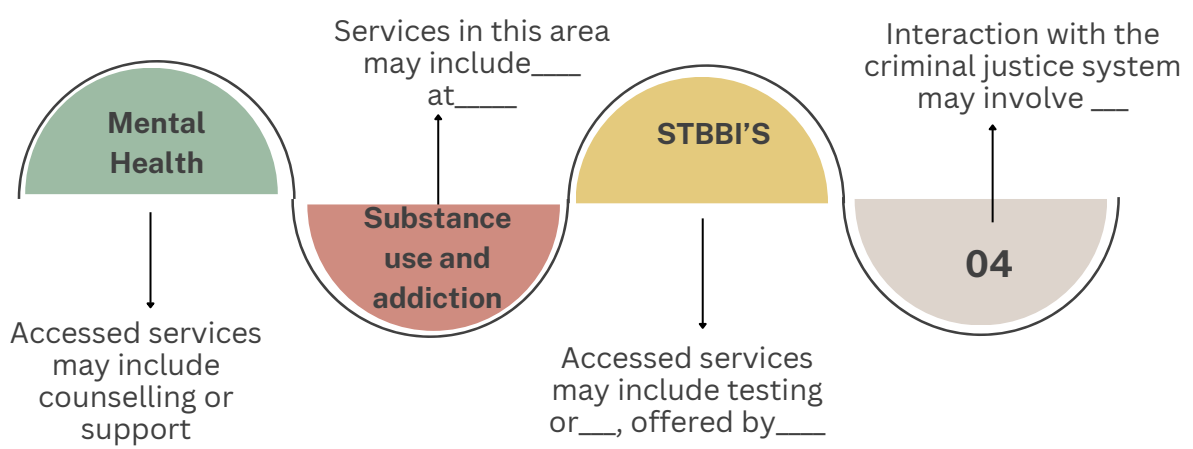


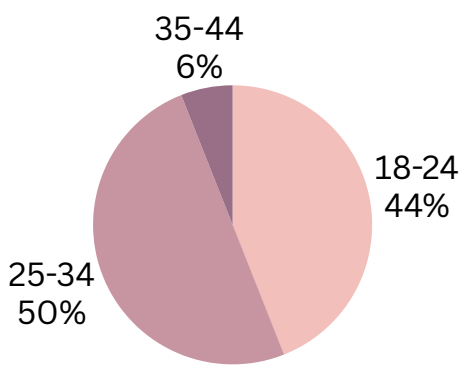
Journey Mapping

Ribbon Rouge Foundation is leading a project investigating and mobilizing knowledge and information to promote health equity for African Caribbean and Black (ACB) 2SLGBTQI+ individuals.

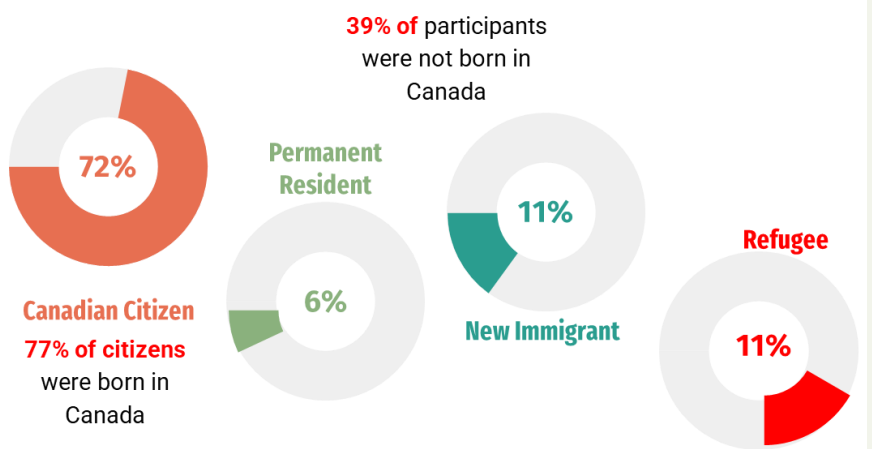


STBBI - Sexually transmitted Blood Borne Infections

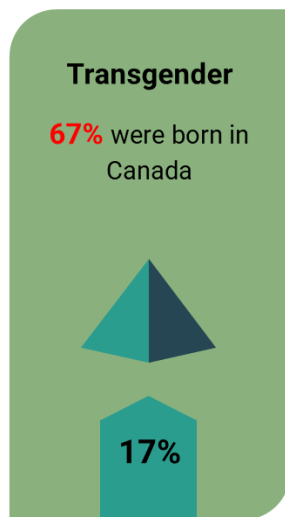
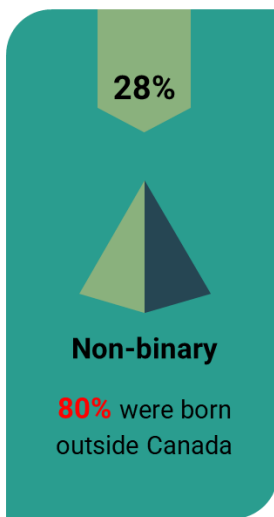
AGE GROUP



IMMIGRATION STATUS



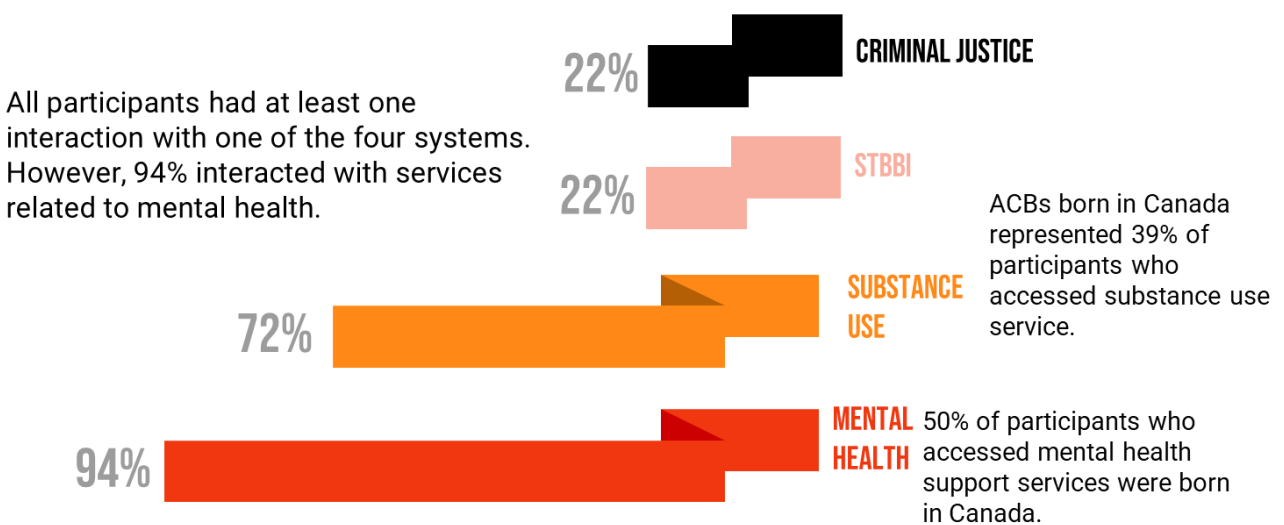
Gender Identity



Sexual Orientation



Interaction with systems



HOW MANY SYSTEMS DID PARTICIPANTS INTERACT WITH?

Majority had interactions with two or more systems. 22% of participants interacted with only one system.

