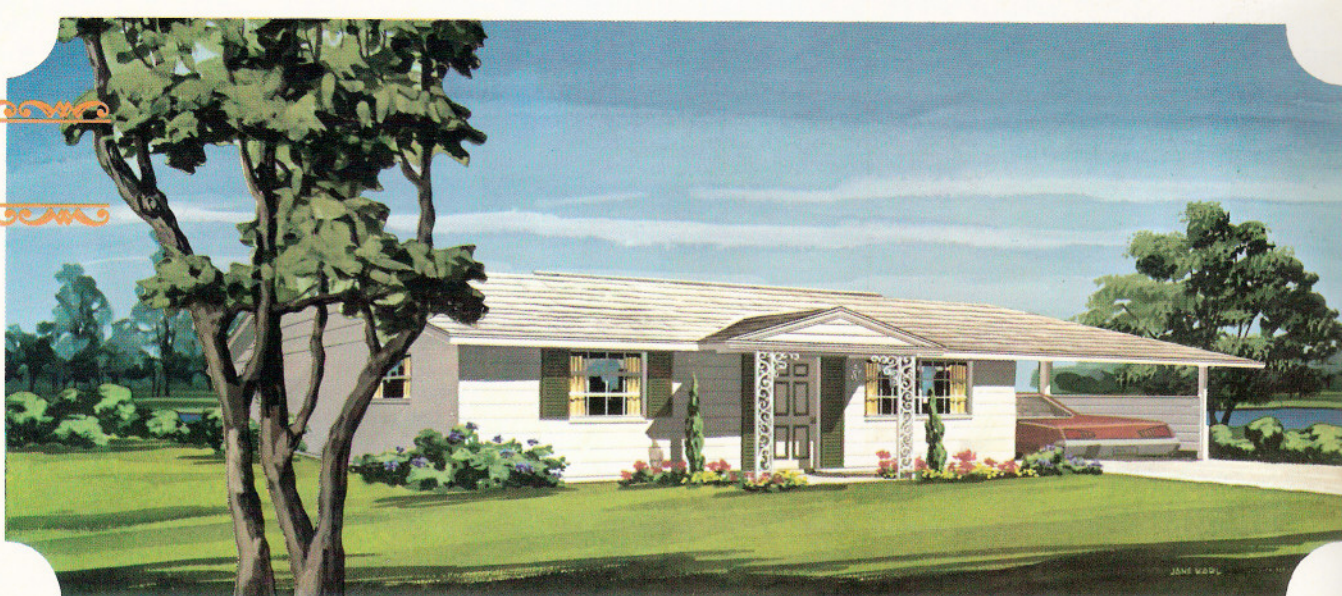
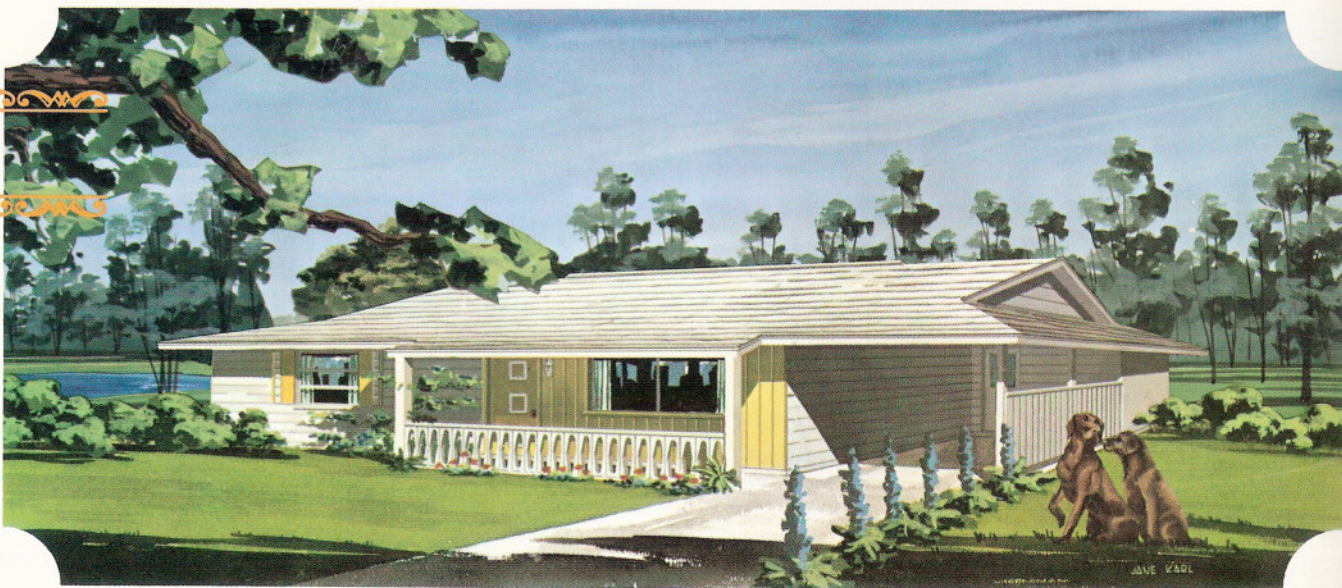


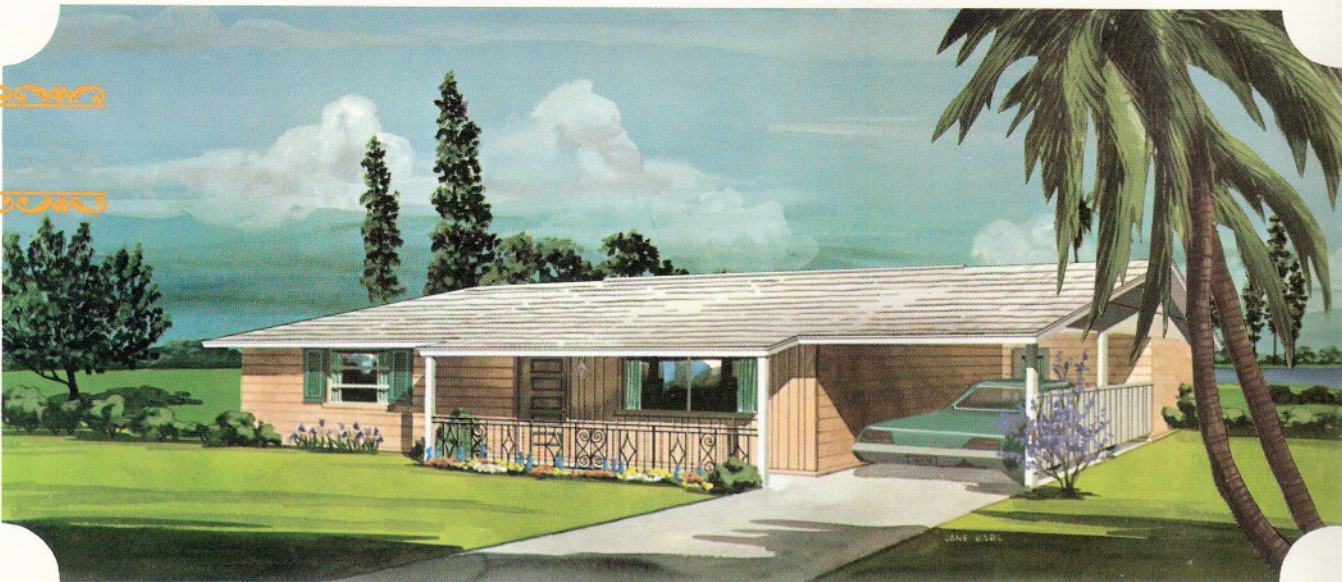
Plan 50-A  
THE SUMTER



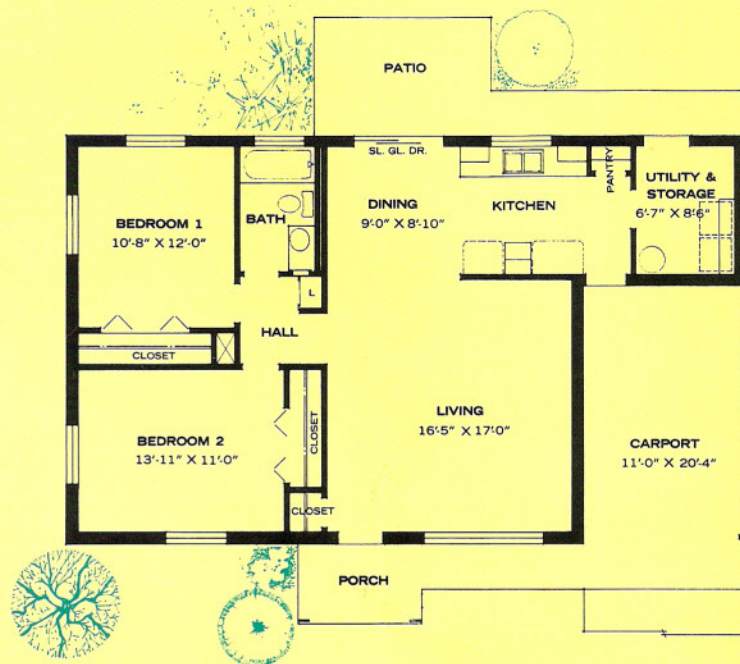
Plan 50-B  
THE SPRITE



Plan 50-C  
THE SHAWNEE







## PLAN 50

The perfect house for thrifty people who want a minimum of housework and total comfort.

The materials and products used to build this house are the finest available in America.

The direct entrance to the kitchen from the carport, the fully-equipped kitchen with pantry, the utility and storage room adjoining the kitchen, the handsome bath with combination tub and shower, and the large living room are all appointments which make this house a mansion in cameo.

The distinctive front exteriors available on this house are unmatched in its class.

### **Quality Features and Products INCLUDED in the Basic Price**

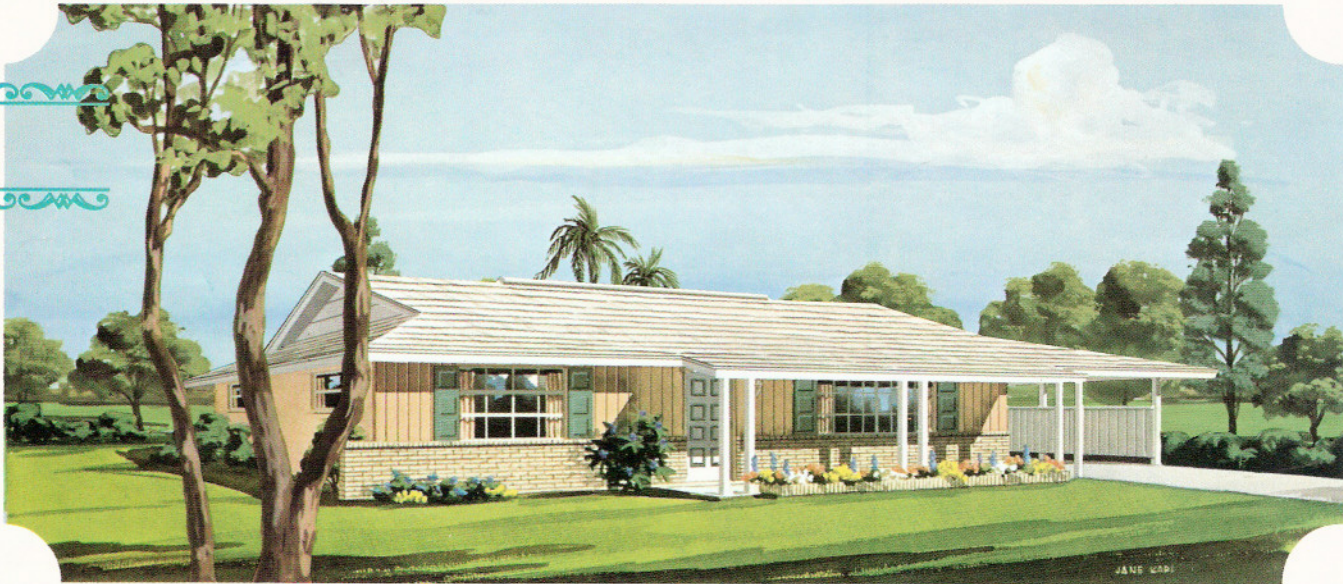
- Frigidaire "Compact 30" built-in range with oven — in a choice of four colors
- Exhaust hood with lights and filter — in a choice of four colors
- Garbage disposer
- Laminated plastic covered kitchen cabinets — in a choice of wood grain finishes
- Laminated plastic kitchen counter tops
- Kitchen pantry
- 40-gallon hot water heater with a 5-year warranty
- White porcelain double-bowl kitchen sink
- White porcelain cast iron tub
- Ceramic tile shower splash
- Single lever mixing-valve at the kitchen sink
- Single lever mixing-valve in the tub and shower
- Oval vitreous china lavatory basin
- Cultured marble vanity tops with large plate glass mirrors
- Quality elongated water closet
- Deluxe gold-plated Country Club shower head
- Automatic washer rough-in
- Terrazzo floor throughout the house
- Electric heat pump heating and cooling, thermostatically controlled, and ducted to all rooms
- Maximum mineral fiber insulation in exterior frame walls and ceilings
- Highest quality electrical system — two spare breaker spaces
- TV jack
- Prewired for telephone outlets
- Illuminated house numbers
- Custom light fixtures
- Clear heart redwood fascia for long paint life
- Fine, textured hard-board exterior paneling by Masonite
- Soffited three-foot overhangs
- 235-pound asphalt shingles nailed and tabbed
- A wide variety of genuine face brick for the front exteriors
- Stylish front entry doors
- Covered front porch



Plan 51-A  
THE VICKERY



Plan 51-B  
THE APACHE

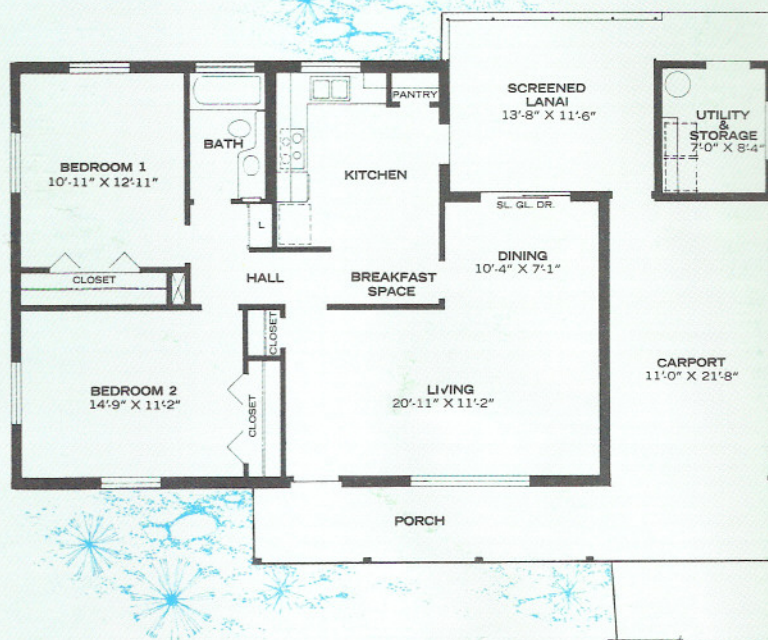


Plan 51-C  
THE ATWOOD



17,990  
Available with  
2nd bath





## PLAN 51

The lovely dining area overlooking the lanai makes this the ideal house for people who are socially inclined but still prefer a minimum of house responsibilities.

The well-designed, fully-equipped kitchen with pantry and breakfast area are other appealing features in this charming home.

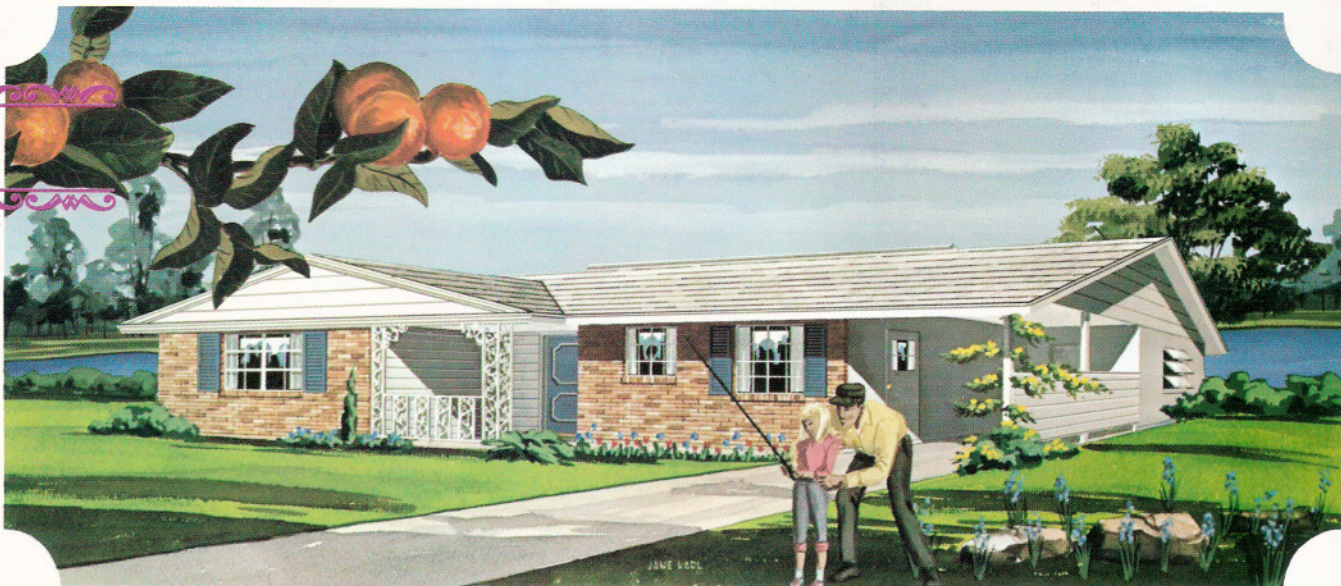
The lanai is enclosed to bring the outdoors into this leisure home.

### *Quality Features and Products INCLUDED in the Basic Price*

- Built-in Frigidaire Deluxe Oven — in a choice of four colors
- Frigidaire Deluxe Cook Top in brushed chrome
- Exhaust hood with lights and filter — in a choice of four colors
- Garbage disposer
- Laminated plastic covered kitchen cabinets — in a choice of wood grain finishes
- Laminated plastic kitchen counter tops
- Kitchen pantry
- 40-gallon hot water heater with a 5-year warranty
- White porcelain double-bowl kitchen sink
- White porcelain cast iron tub
- Ceramic tile shower splash
- Single lever mixing-valve at the kitchen sink
- Single lever mixing-valve in the tub and shower
- Oval vitreous china lavatory basin
- Cultured marble vanity tops with large plate glass mirrors
- Quality elongated water closet
- Deluxe gold-plated Country Club shower head
- Automatic washer rough-in
- Terrazzo floor throughout the house
- Electric heat pump heating and cooling, thermostatically controlled, and ducted to all rooms
- Maximum mineral fiber insulation in exterior frame walls and ceilings
- Highest quality electrical system — two spare breaker spaces
- TV jack
- Prewired for telephone outlets
- Illuminated house numbers
- Custom light fixtures
- Clear heart redwood fascia for long paint life
- Soffited three-foot overhangs
- Fine, textured hardboard exterior paneling by Masonite
- 235-pound asphalt shingles nailed and tabbed
- A wide variety of genuine face brick for the front exteriors
- Stylish front entry doors
- Covered front porch
- Large separate storage room



Plan 52-A  
THE MAGNOLIA



Plan 52-B  
THE LAREDO

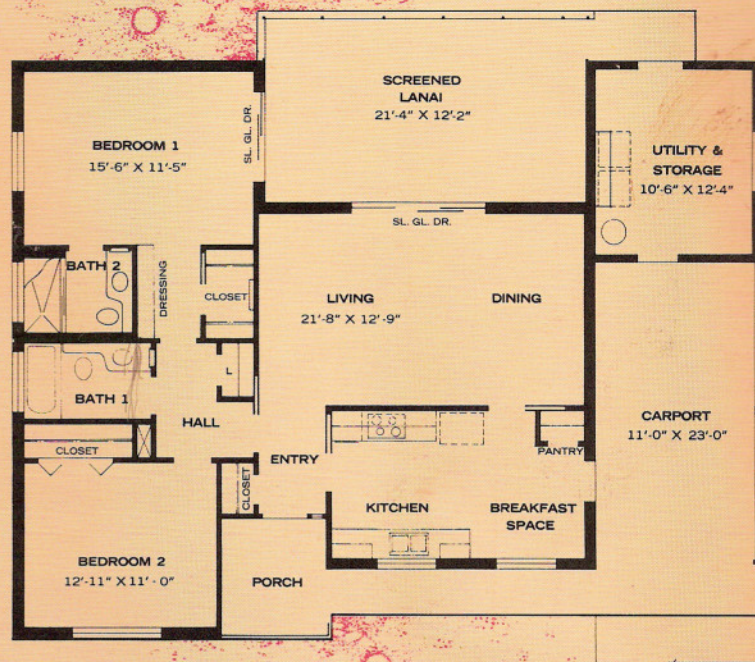


Plan 52-C  
THE CONTINENTAL



19,990  
Delbert R. Rupp, Jr.  
Architect





## PLAN 52

The charm of a kitchen overlooking the front yard appeal to you? The charm and usefulness of a lanai running across the rear of the house appeal to you?

The master bedroom suite, besides the feature-filled bathroom, has a big walk-in closet and a dressing table with mirror and lights. It also has sliding glass doors that open onto the lanai.

Two big windows let plenty of light into the fully equipped kitchen with its pantry and breakfast space.

An entrance foyer, a large entrance porch and wide overhangs complemented by a variety of brick veneers and accent colors make this resort house a pleasure to look upon.

### *Quality Features and Products INCLUDED in the Basic Price*

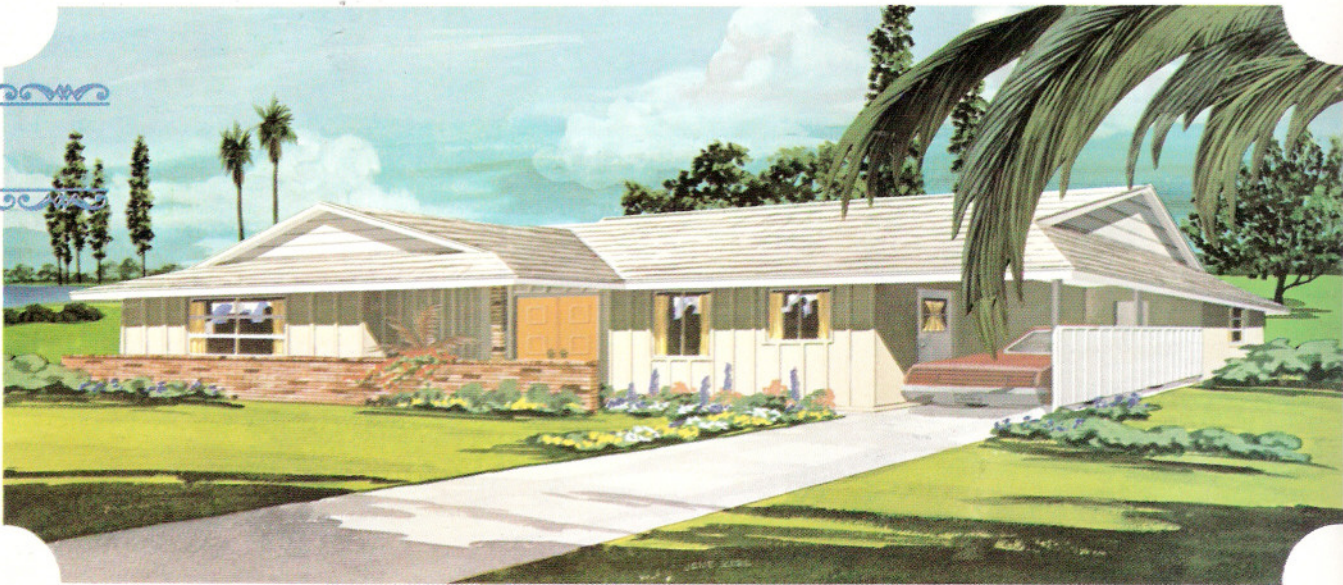
- Built-in Frigidaire Deluxe Oven — in a choice of four colors
- Frigidaire Deluxe Cook Top in brushed chrome
- Exhaust hood with lights and filter — in a choice of four colors
- Garbage disposer
- Laminated plastic covered kitchen cabinets — in a choice of wood grain finishes
- Laminated plastic kitchen counter tops
- Kitchen pantry
- 40-gallon hot water heater with a 5-year warranty
- White porcelain double-bowl kitchen sink
- White porcelain cast iron tub
- Ceramic tile shower splash
- Single lever mixing-valve at the kitchen sink
- Single lever mixing-valve in the tub and shower
- Oval vitreous china lavatory basin
- Cultured marble vanity tops with large plate glass mirrors
- Quality elongated water closet
- Deluxe gold-plated Country Club shower head
- Automatic washer rough-in
- Terrazzo floor throughout the house
- Walk-in closet
- Shoe rack
- Dressing table
- Electric heat pump heating and cooling, thermostatically controlled, and ducted to all rooms
- Maximum mineral fiber insulation in exterior frame walls and ceilings
- Highest quality electrical system — two spare breaker spaces
- TV jack
- Prewired for telephone outlets
- Illuminated house numbers
- Wallpaper — both baths
- Custom light fixtures
- Clear heart redwood fascia for long paint life
- Fine, textured hardboard exterior paneling by Masonite
- Soffited three-foot overhangs
- 235-pound asphalt shingles nailed and tabbed
- A wide variety of genuine face brick for the front exteriors
- Double front entry doors
- Covered front porch
- Large utility and storage room



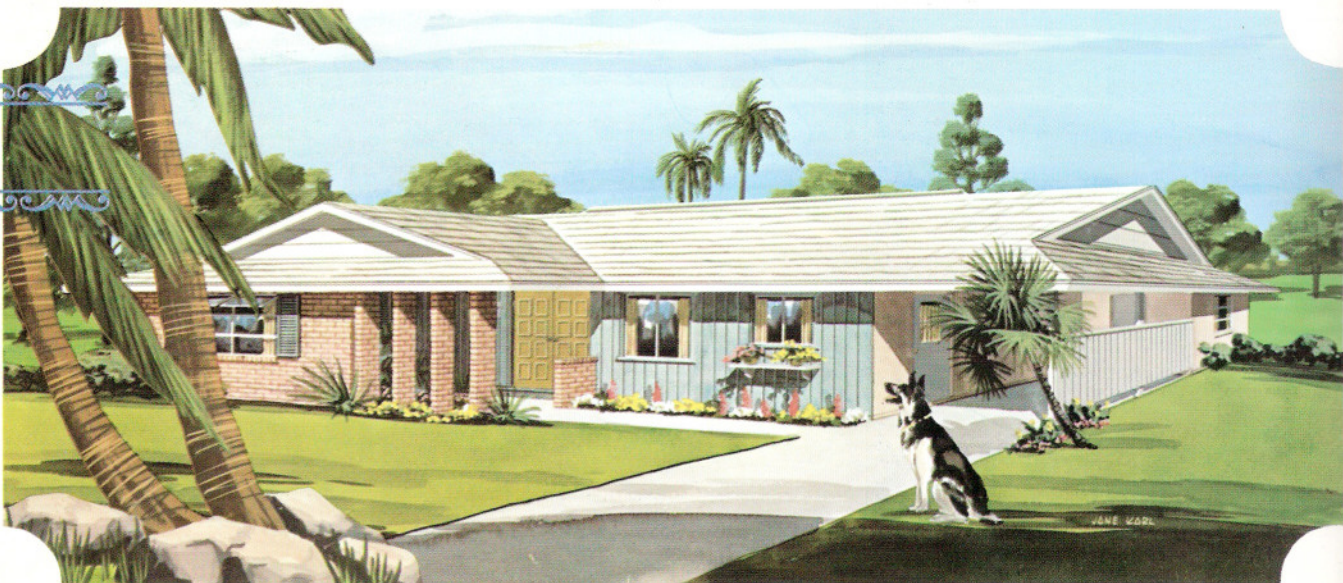
Plan 53-A  
THE KINGSPORT



Plan 53-B  
THE LONGHORN

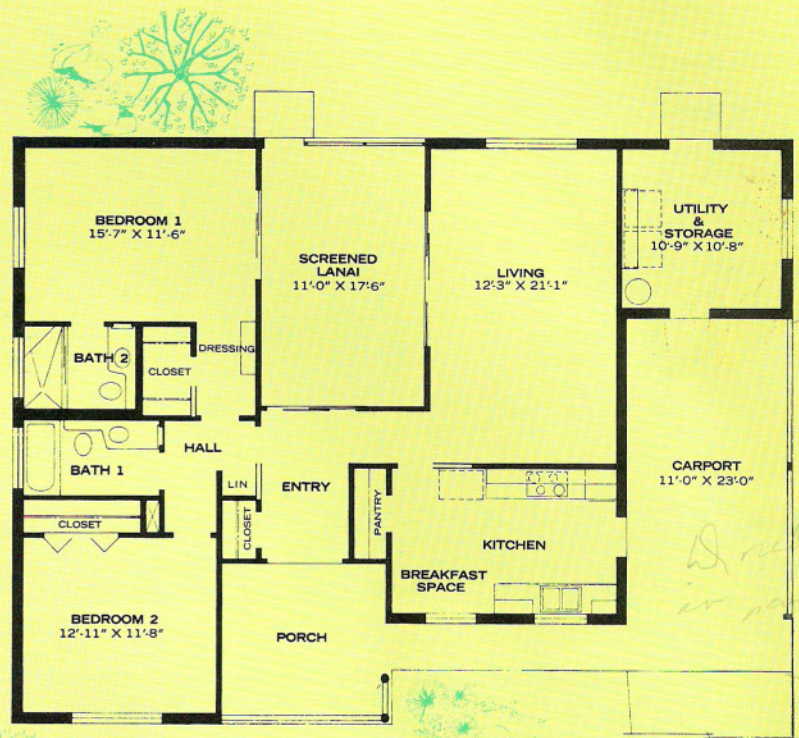


Plan 53-C  
THE ESQUIRE



20,590





## PLAN 53

A stunning house plan featuring a lanai surrounded by all the living areas of the house... the living room, the entrance gallery and the master bedroom all open onto the lanai through sliding glass doors.

The master bedroom suite includes a dressing area, walk-in closet and a luxurious bathroom. The second bedroom also has its own full bath and walk-in closet.

The fully-equipped kitchen has a breakfast area and a pantry.

Finally, a spacious front porch invites you to enter this paragon of resort homes.

### Quality Features and Products INCLUDED in the Basic Price

- Built-in Frigidaire Deluxe Oven — in a choice of four colors
- Frigidaire Deluxe Cook Top in brushed chrome
- Exhaust hood with lights and filter — in a choice of four colors
- Garbage disposer
- Laminated plastic covered kitchen cabinets — in a choice of wood grain finishes
- Laminated plastic kitchen counter tops
- Kitchen pantry
- 40-gallon hot water heater with a 5-year warranty
- White porcelain double-bowl kitchen sink
- White porcelain cast iron tub
- Ceramic tile shower splash
- Single lever mixing-valve at the kitchen sink
- Single lever mixing-valve in the tub and shower
- Oval vitreous china lavatory basin
- Cultured marble vanity tops with large plate glass mirrors
- Quality elongated water closet
- Deluxe gold-plated Country Club shower head
- Automatic washer rough-in
- Terrazzo floor throughout the house
- Walk-in closet
- Shoe rack
- Dressing table
- Electric heat pump heating and cooling, thermostatically controlled, and ducted to all rooms
- Maximum mineral fiber insulation in exterior frame walls and ceilings
- Highest quality electrical system — two spare breaker spaces
- TV jack
- Prewired for telephone outlets
- Illuminated house numbers
- Wallpaper — both baths
- Custom light fixtures
- Clear heart redwood fascia for long paint life
- Fine, textured hardboard exterior paneling by Masonite
- 235-pound asphalt shingles nailed and tabbed
- A wide variety of genuine face brick for the front exteriors
- Double front entry doors
- Covered front porch