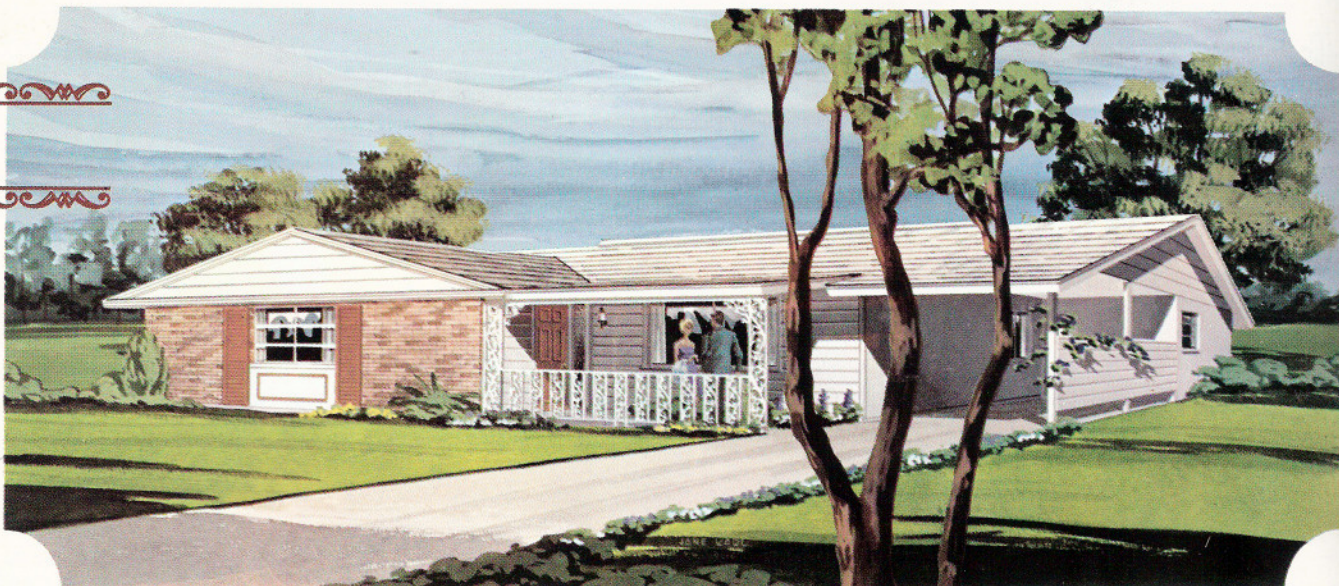


Plan 54-A
THE FAIRFAX

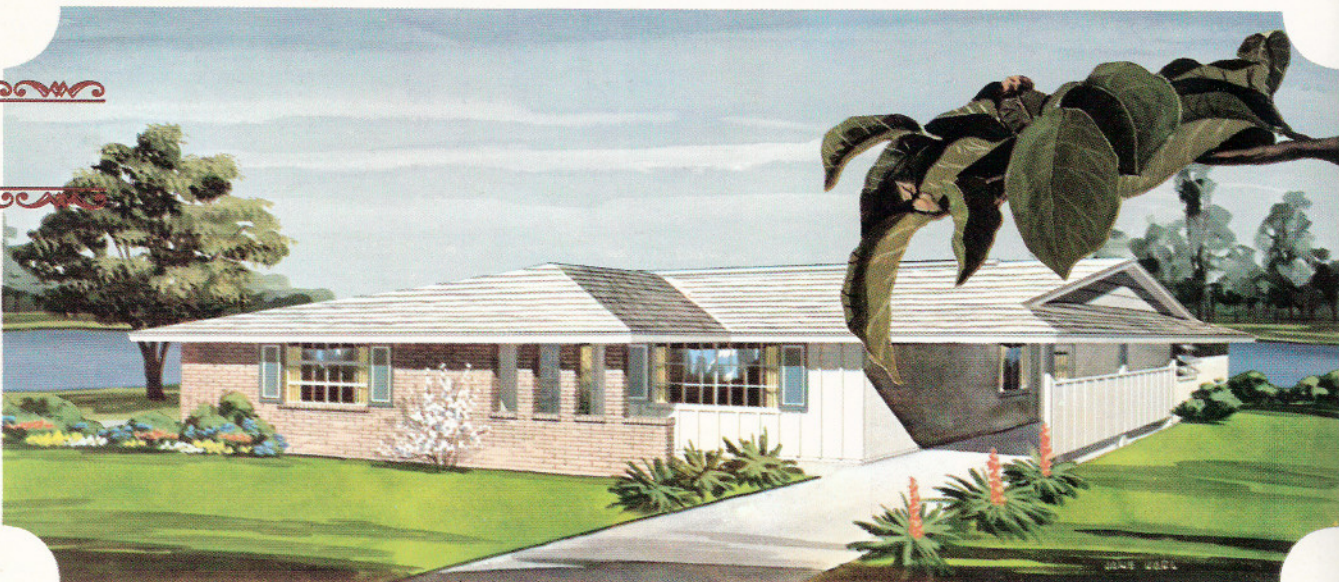


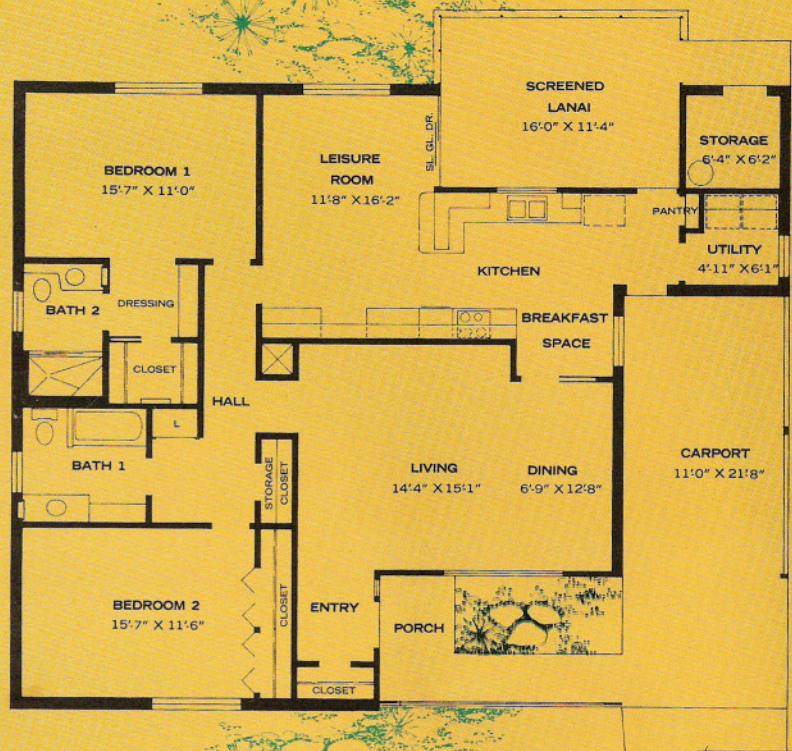
22,590
Excellent
Closest space
(nice)

Plan 54-B
THE ROYALE



Plan 54-C
THE MAVERICK





PLAN 54

An 'easy livin' house featuring a lanai and leisure room designed for relaxing and entertaining. The leisure room includes a built-in bookcase, china cabinet, desk and TV space.

The fully-equipped kitchen has lots of cabinet space, a breakfast bar and dinette space. It is adjoined by the utility room.

Handsome front exteriors, excellent floor plan, filled with fine appointments . . . equals the perfect house for happy living.

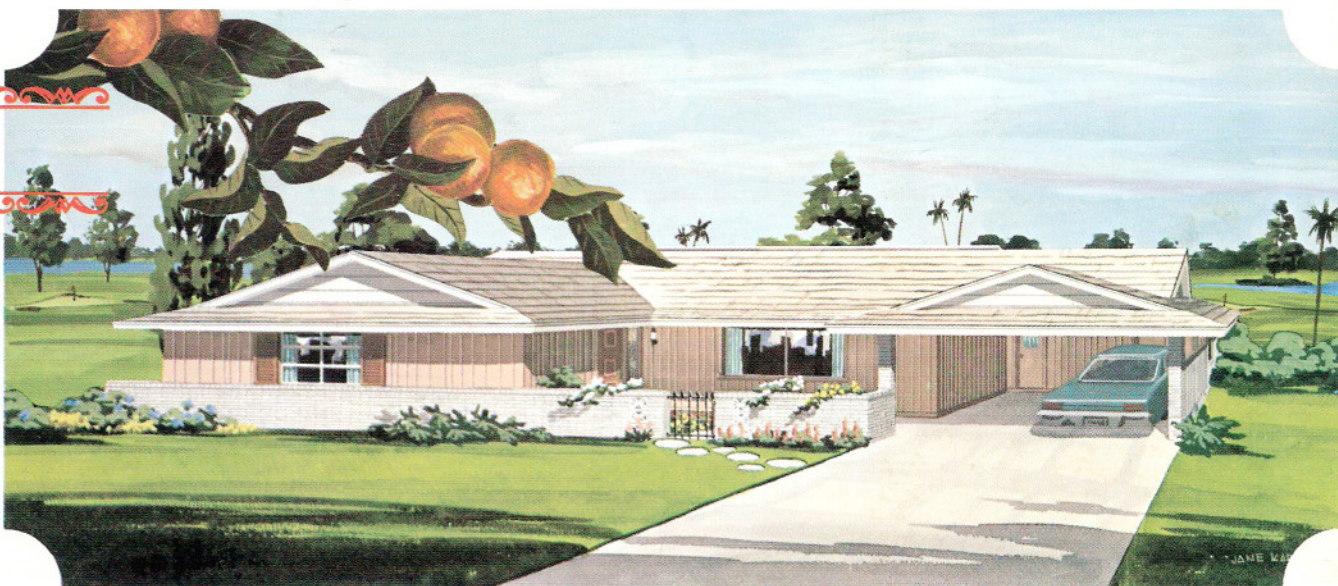
Quality Features and Products INCLUDED in the Basic Price

- Frigidaire Flair "oven over burner" range in Aztec Copper with attached exhaust hood
- Garbage disposer
- Laminated covered kitchen cabinets in a choice of wood grain finishes
- Laminated plastic kitchen counter tops
- Kitchen pantry
- Breakfast bar
- 40-gallon hot water heater with a 5-year warranty
- White porcelain double-bowl kitchen sink
- White porcelain cast iron tub
- Ceramic tile shower splash
- Single lever mixing-valve at the kitchen sink
- Single lever mixing-valve in the tub and shower
- Oval vitreous china lavatory basin
- Cultured marble vanity tops with large plate glass mirrors
- Deluxe gold-plated Country Club shower head
- Quality elongated water closet
- Automatic washer rough-in
- Terrazzo floor throughout the house
- Dressing table
- Walk-in closet
- Shoe rack
- Built-in bookcase
- Built-in desk
- Built-in china cabinet
- Built-in TV space
- Separate exterior storage room
- Electric heat pump heating and cooling, thermostatically controlled, and ducted to all rooms
- Maximum mineral fiber insulation in exterior frame walls and ceilings
- Highest quality electrical system — two spare breaker spaces
- TV jack
- Prewired for telephone outlets
- Illuminated house numbers
- Wallpaper — both baths
- Custom light fixtures
- Soffited three-foot overhangs
- Clear heart redwood fascia for long paint life
- Fine, textured hardboard exterior paneling by Masonite
- 235-pound asphalt shingles nailed and tabbed
- A wide variety of genuine face brick for the front exteriors
- Stylish entry doors
- Covered front porch

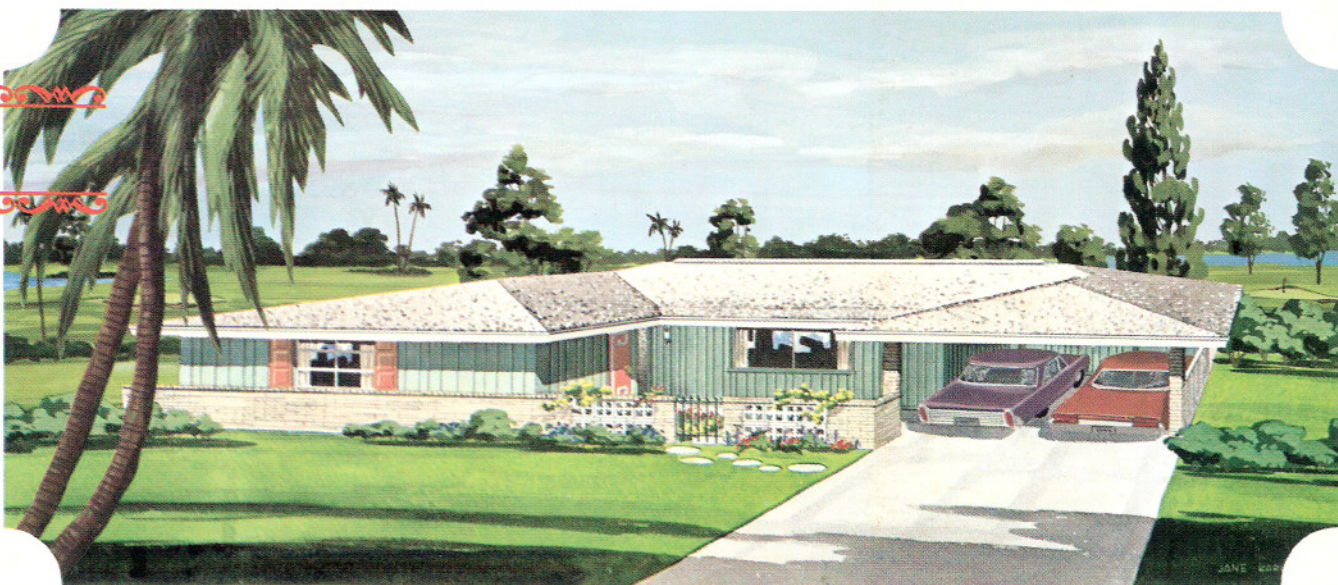
Plan 55-A
THE HEMLOCK



Plan 55-B
THE WRANGLER



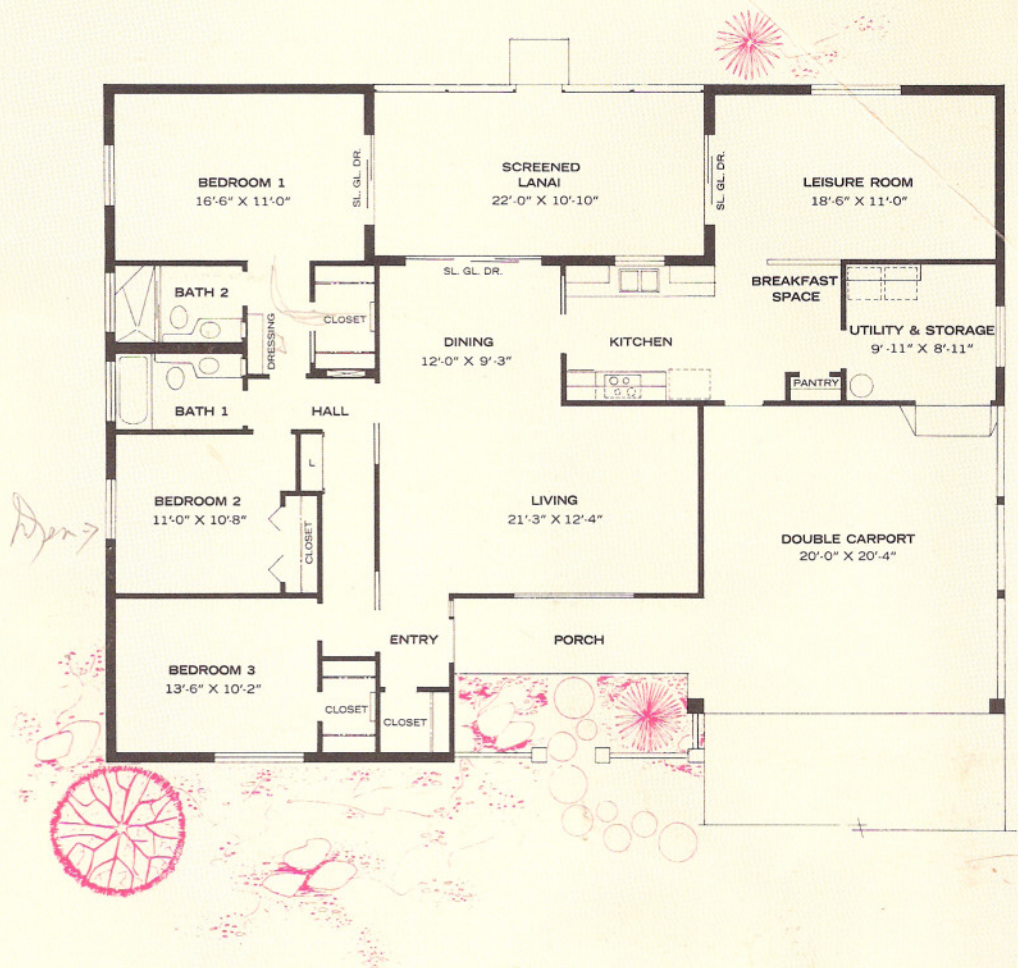
Plan 55-C
THE EXPRESSO



24,590

PLAN 55

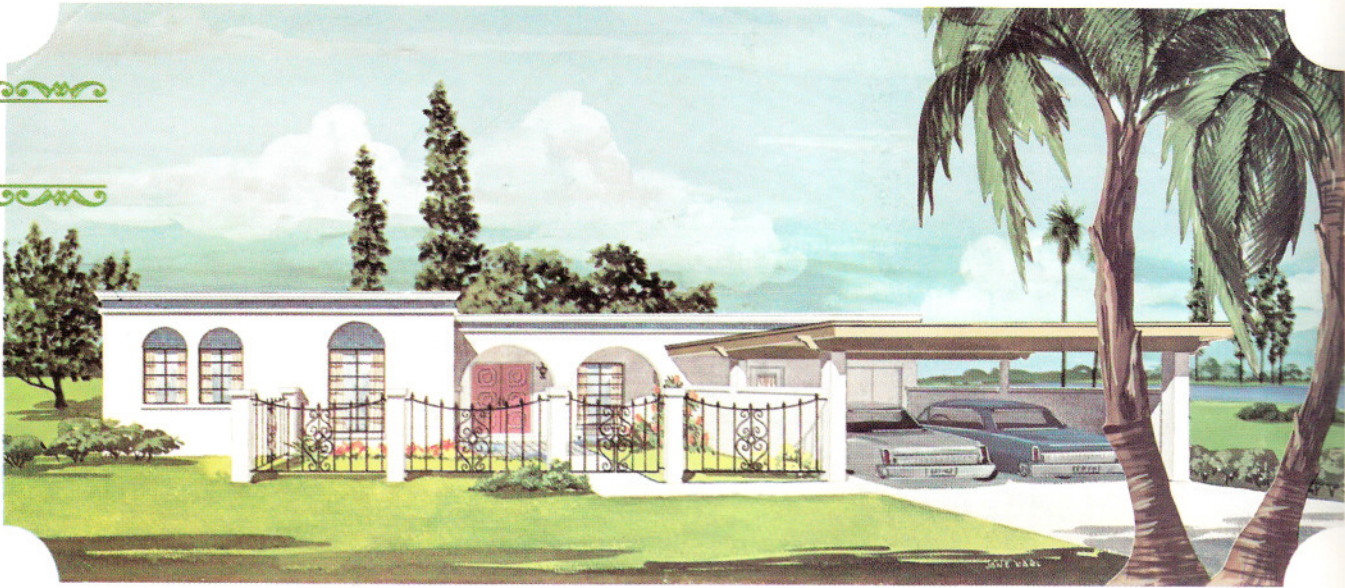
A garden courtyard beckons you to this superb house with its gracious style and functional floor plan. The enclosed lanai is the focal point of the living area of the house. It is surrounded by and accessible to the master bedroom suite, the dining area and the leisure room. And it is "open season" for entertaining in this leisure room because it is remote from the bedrooms. The utility/storage room leads into the fully-equipped kitchen. The storage room, incidentally, could house an electric golf cart. Another big STANDARD feature of Plan 55 is the double carport. Ample storage space? It's everywhere. From the six inches of insulation in the ceiling to the terrazzo floor over the concrete foundation, this house is filled with quality features which have made Del Webb's Sun City houses famous. This house was especially designed for those who do not care to settle for less than the very best.



Quality Features and Products INCLUDED in the Basic Price

- Frigidaire Flair "oven over burner" range in Aztec Copper with attached exhaust hood
- Garbage disposer
- Laminated covered kitchen cabinets in a choice of wood grain finishes
- Laminated plastic kitchen counter tops
- Kitchen pantry
- Breakfast bar
- 40-gallon hot water heater with a 5-year warranty
- White porcelain double-bowl kitchen sink
- White porcelain cast iron tub
- Ceramic tile shower splash
- Single lever mixing-valve at the kitchen sink
- Single lever mixing-valve in the tub and shower
- Oval vitreous china lavatory basin
- Cultured marble vanity tops with large plate glass mirrors
- Deluxe gold-plated Country Club shower head
- Quality elongated water closet
- Automatic washer rough-in
- Terrazzo floors throughout the house
- Dressing table
- Walk-in closets
- Shoe racks
- Electric heat pump heating and cooling, thermostatically controlled, and ducted to all rooms
- Maximum mineral fiber insulation in exterior frame walls and ceilings
- Highest quality electrical system — two spare breaker spaces
- TV jack
- Prewired for telephone outlets
- Illuminated house numbers
- Wallpaper — both baths
- Custom light fixtures
- Soffited three-foot overhangs
- Clear heart redwood fascia for long paint life
- Fine, textured hardboard exterior paneling by Masonite
- 235-pound asphalt shingles nailed and tabbed
- A wide variety of genuine face brick for the front exteriors
- Stylish entry doors
- Covered front porch

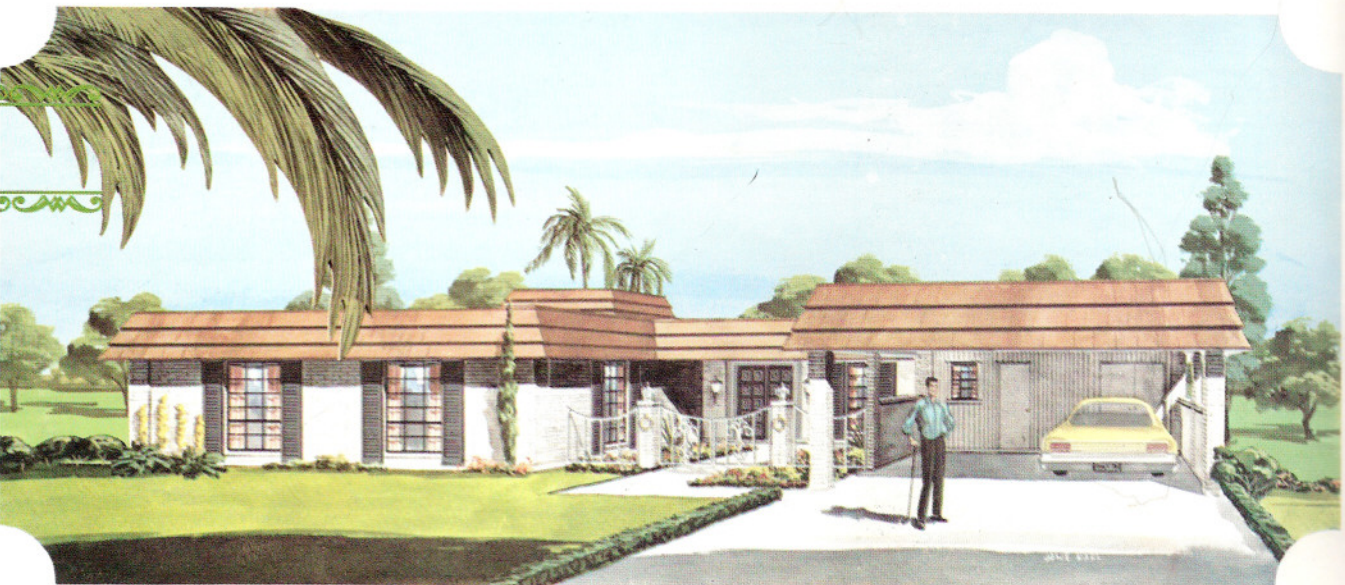
Plan 57-M
THE MEDITERRANIA



Plan 57-B
THE BUCKHORN



Plan 57-F
THE CHATEAU



PLAN 57

The atmosphere of the Mediterranean... Spain, Italy, Morocco.

This magnificent house, called the Mediterrania, contains those expansive features developed in the fine homes of the famous countries of Southern Europe... the entrance courtyard, rich, colorful detail on the exterior, interior gallery, generous-sized rooms... houses designed for entertaining and living in the grand sense of the word... and it also contains the best the industrial age has developed. In short, it represents the best of two worlds.

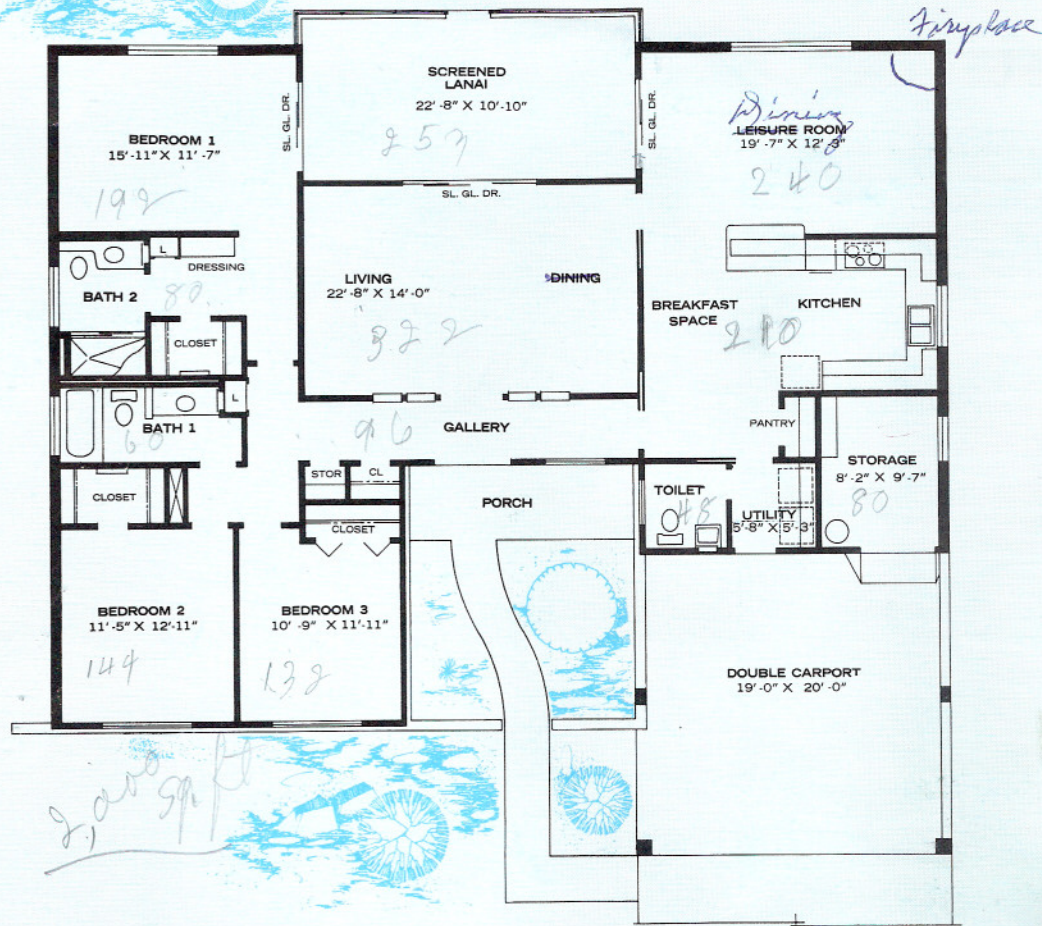
The entry door opening into the gallery and living room, the bedroom wing to the right and the kitchen and leisure room to the left display the perfect floor plan.

The leisure room, living room and master bedroom suite all open onto the lanai through glass doors.

A workshop or storage room, that could house a golf cart, is located at the rear of the double carport, a standard feature of Plan 57.

A utility room between the kitchen and the carport, a dream kitchen with a pantry, and ample storage space everywhere are some notable practical features of this house.

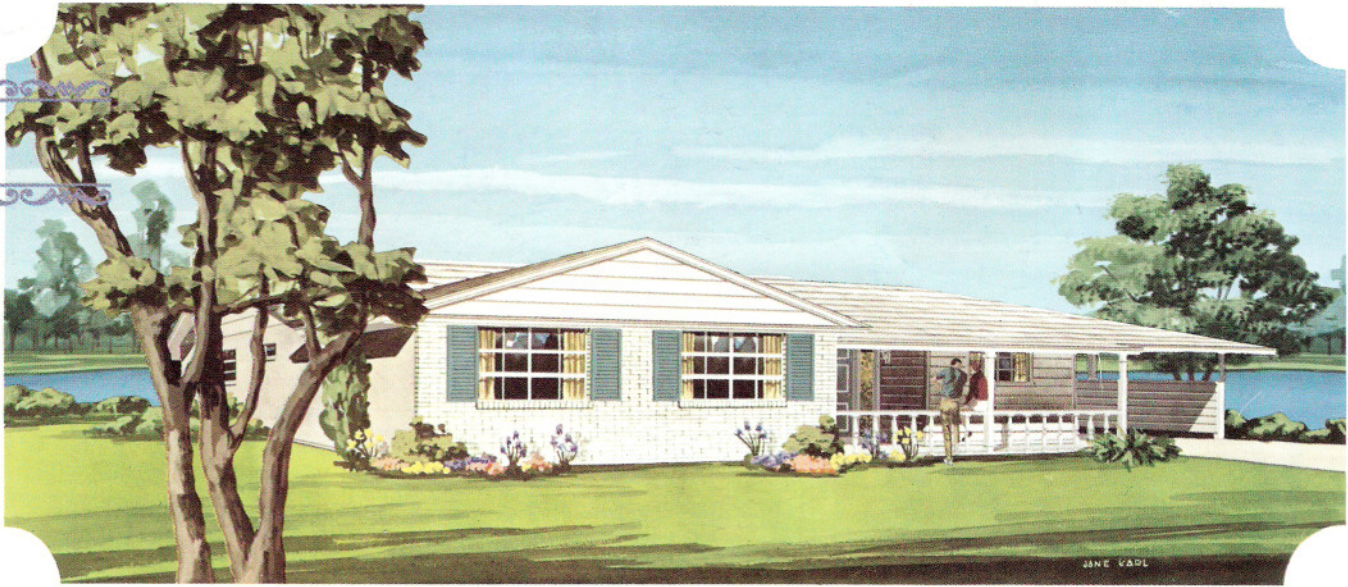
Compare... compare and you will agree that the Mediterrania represents a new standard of excellence in modern-day home design, features and construction.



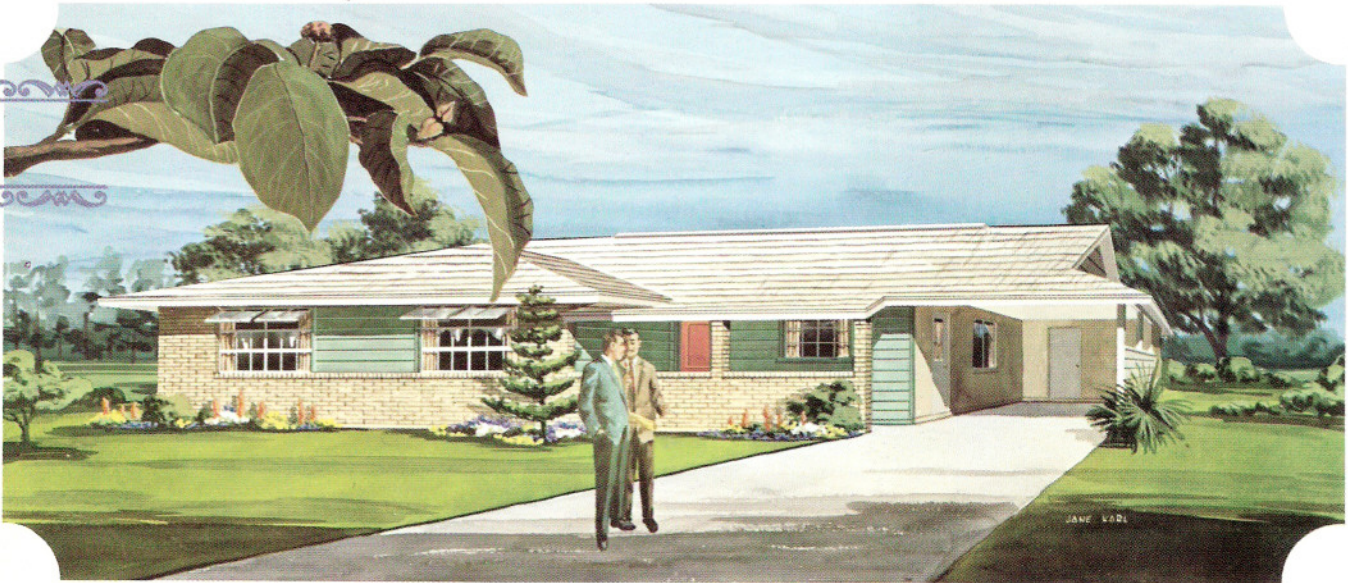
Quality Features and Products INCLUDED in the Basic Price

- Built-in Frigidaire Deluxe Oven — in a choice of four colors
- Frigidaire Deluxe Cook Top in brushed chrome
- Exhaust hood with lights and filter — in a choice of four colors
- Garbage disposer
- Laminated plastic covered kitchen cabinets — in a choice of wood grain finishes
- Laminated plastic kitchen counter tops
- Kitchen pantry
- 40-gallon hot water heater with a 5-year warranty
- White porcelain double-bowl kitchen sink
- White porcelain cast iron tub
- Ceramic tile shower splash
- Single lever mixing-valve at the kitchen sink
- Single lever mixing-valve in the tub and shower
- Oval vitreous china lavatory basin
- Cultured marble vanity tops with large plate glass mirrors
- Quality elongated water closet
- Deluxe gold-plated Country Club shower head
- Automatic washer rough-in
- Terrazzo floor throughout the house
- Walk-in closets
- Shoe racks
- Linen closet in dressing room
- Dressing table
- Electric heat pump heating and cooling, thermostatically controlled, and ducted to all rooms
- Maximum mineral fiber insulation in exterior frame walls and ceilings
- Highest quality electrical system — two spare breaker spaces
- TV jack
- Prewired for telephone outlets
- Illuminated house numbers
- Wallpaper — two baths
- Custom light fixtures
- Clear heart redwood fascia for long paint life
- Fine, textured hardboard exterior paneling by Masonite
- 235-pound asphalt shingles nailed and tabbed
- A wide variety of genuine face brick for the front exteriors
- Double front entry doors
- Covered front porch

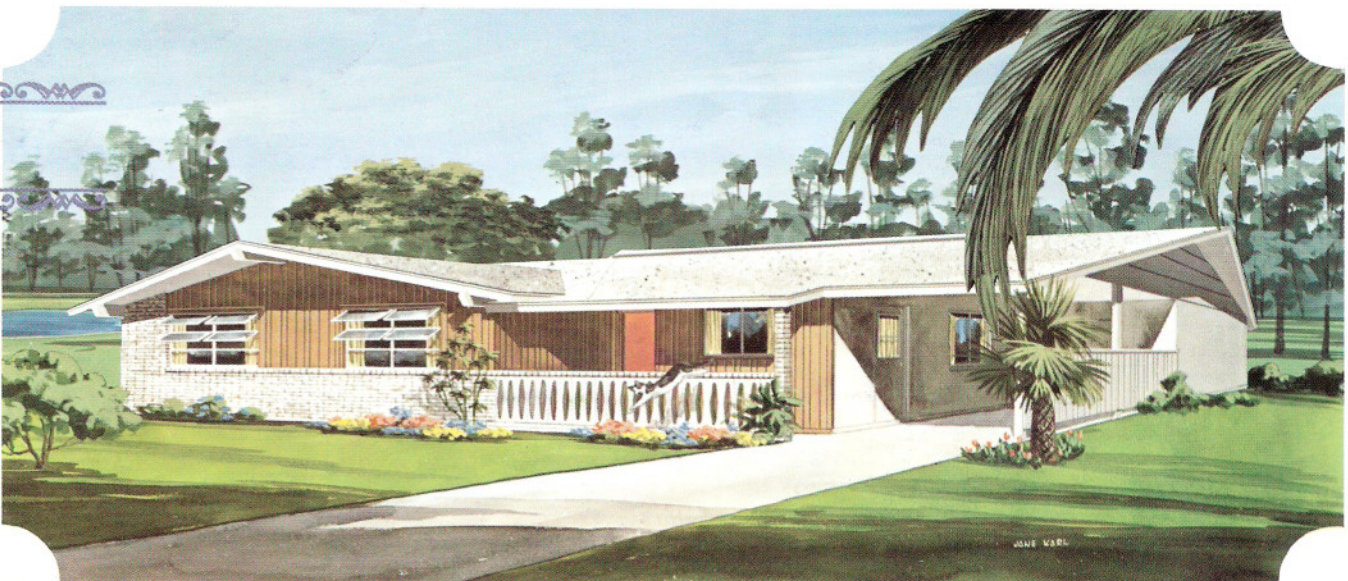
Plan 58-A
THE NEWPORT

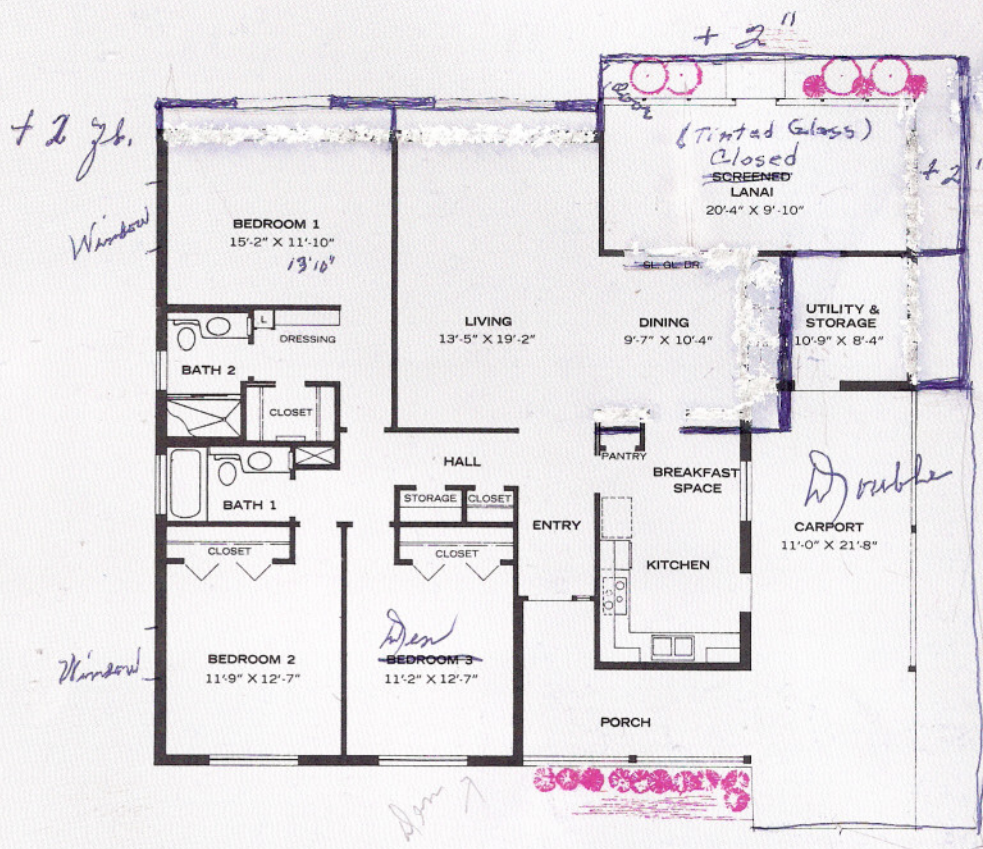


Plan 58-B
THE RANCHERO



Plan 58-C
THE GALAXY





PLAN 58

A rear living room and dining room opening onto a covered lanai as well as three big bedrooms are the dominant features of this livable house.

The fully-equipped kitchen with its pantry and breakfast area opens onto the carport.

There is plenty of big storage space throughout the house.

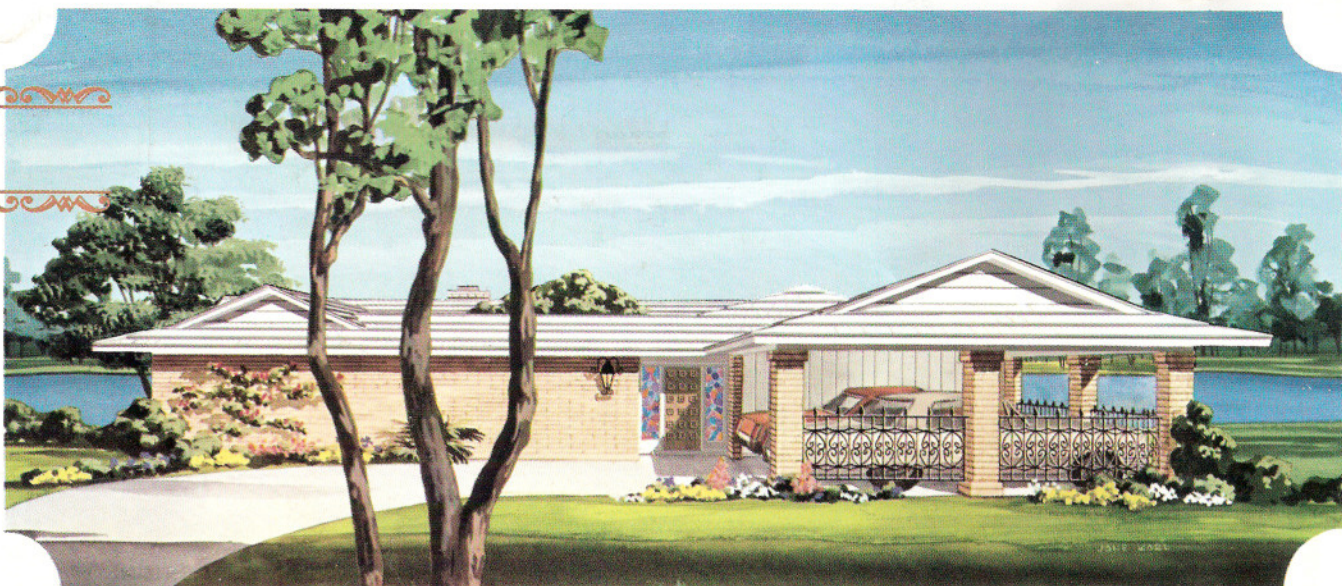
The master bedroom suite has a luxurious bath (both baths are wallpapered), a walk-in closet and dressing table.

These fine features, coupled with old-world craftsmanship and 'easy livin' floor plan, make this house unbeatable in its class.

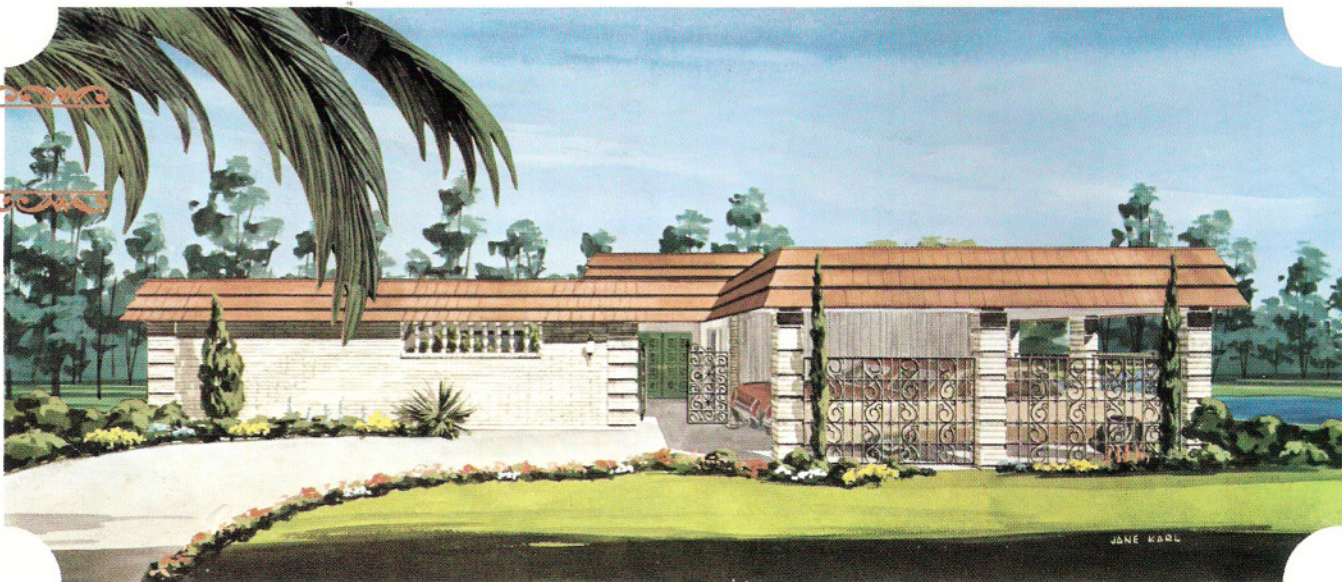
Quality Features and Products INCLUDED in the Basic Price

- Built-in Frigidaire Deluxe Oven — in a choice of four colors
- Frigidaire Deluxe Cook Top in brushed chrome
- Exhaust hood with lights and filter — in a choice of four colors
- Garbage disposer
- Laminated plastic covered kitchen cabinets — in a choice of wood grain finishes
- Laminated plastic kitchen counter tops
- Kitchen pantry
- 40-gallon hot water heater with a 5-year warranty
- White porcelain double-bowl kitchen sink
- White porcelain cast iron tub
- Ceramic tile shower splash
- Single lever mixing-valve at the kitchen sink
- Single lever mixing-valve in the tub and shower
- Oval vitreous china lavatory basin
- Cultured marble vanity tops with large plate glass mirrors
- Quality elongated water closet
- Deluxe gold-plated Country Club shower head
- Automatic washer rough-in
- Terrazzo floor throughout the house
- Walk-in closet
- Shoe rack
- Dressing table
- Electric heat pump heating and cooling, thermostatically controlled, and ducted to all rooms
- Maximum mineral fiber insulation in exterior frame walls and ceilings
- Highest quality electrical system — two spare breaker spaces
- TV jack
- Prewired for telephone outlets
- Illuminated house numbers
- Wallpaper — both baths
- Custom light fixtures
- Clear heart redwood fascia for long paint life
- Fine, textured hardboard exterior paneling by Masonite
- 235-pound asphalt shingles nailed and tabbed
- A wide variety of genuine face brick for the front exteriors
- Stylish front entry doors
- Covered front porch

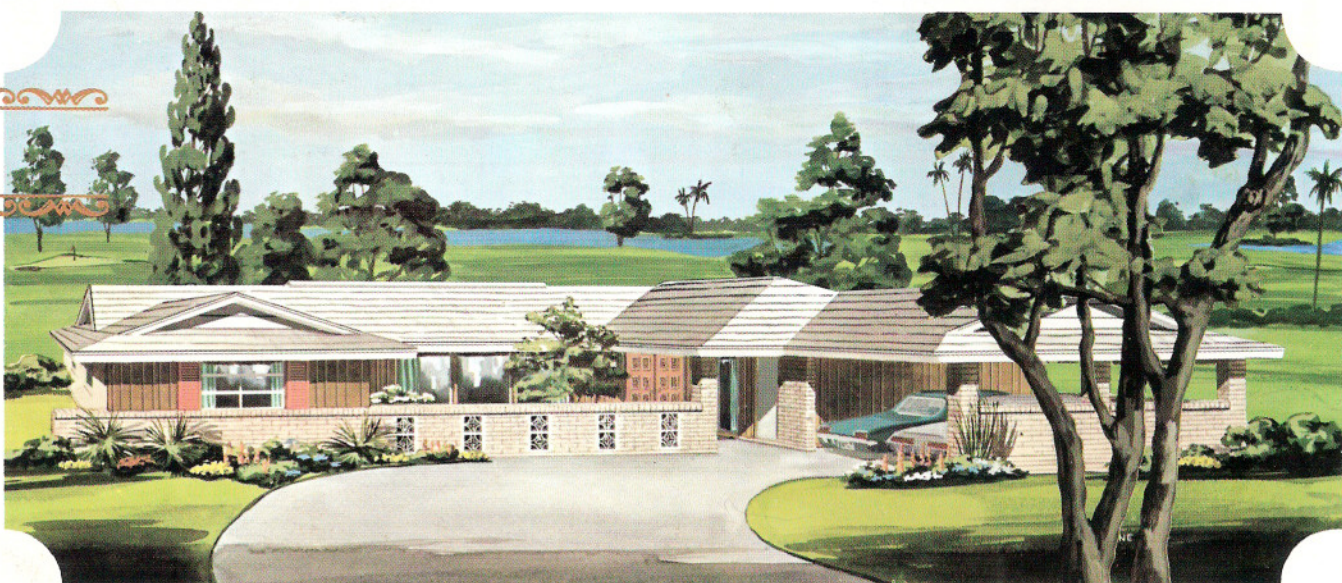
Plan 59-S
THE CYPRESS



Plan 59-F
THE TEAKWOOD



Plan 59-B
THE RIVIERA



PLAN 59

The sweep of a curved front drive, the elegance of an atrium, the long covered approach to the front doors, the stylish front exteriors invite you into one of the finest houses ever designed.

The interior includes a separate dining room, dressing areas and walk-in closets with each bath and bedroom, a fully-equipped electric kitchen adjoined by a breakfast area on one end and a utility room on the other.

This incomparable house, filled with every convenience, was designed specifically for those who are accustomed to the finest.



Quality Features and Products INCLUDED in the Basic Price

- Built-in Frigidaire Double Oven — in a choice of four colors
- Frigidaire Deluxe Cook Top in brushed chrome
- Exhaust hood with lights and filter — in a choice of four colors
- Garbage disposer
- Laminated plastic covered kitchen cabinets — in a choice of wood grain finishes
- Laminated plastic kitchen counter tops
- Kitchen pantry
- 40-gallon hot water heater with a 5-year warranty
- White porcelain, double-bowl kitchen sink
- White porcelain cast iron tub
- Ceramic tile shower splash
- Single lever mixing-valve at the kitchen sink
- Single lever mixing-valve in the tub and shower
- Oval vitreous china lavatory basin
- Cultured marble vanity tops with large plate glass mirrors
- Quality elongated water closet
- Deluxe gold-plated Country Club shower head
- Automatic washer rough-in
- Terrazzo floor throughout the house
- Walk-in closets
- Shoe racks
- Linen closet in dressing rooms
- Dressing tables
- Electric heat pump heating and cooling, thermostatically controlled, and ducted to all rooms
- Maximum mineral fiber insulation in exterior frame walls and ceilings
- Highest quality electrical system — two spare breaker spaces
- TV jack
- Prewired for telephone outlets
- Illuminated house numbers
- Wallpaper — both baths
- Custom light fixtures
- Clear heart redwood fascia for long paint life
- Fine, textured hardboard exterior paneling by Masonite
- 235-pound asphalt shingles nailed and tabbed
- A wide variety of genuine face brick for the front exteriors
- Double front entry doors
- Covered front porch