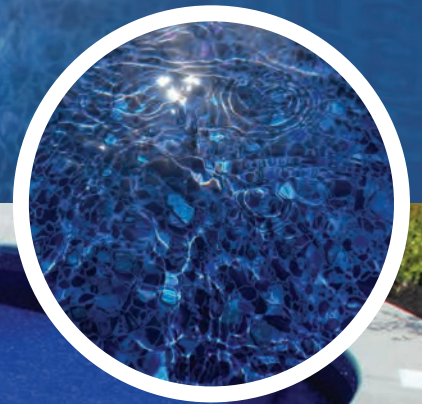




# VINYLLINER PATTERN COLLECTION



# 2026

[WWW.HYDRAPOLS.COM](http://WWW.HYDRAPOLS.COM)





# Welcome to the Water

At Hydra Pools, we believe your pool should be more than functional, it should be beautiful, durable and a perfect reflection of your style. Whether you’re building a new pool or replacing a liner in your current one, we’re here to make the process clear and inspiring. Inside this brochure, you’ll discover our full 2026 collection of premium vinyl liners, thoughtfully designed to enhance every swim, splash, and soak. From bold mosaics to soft, modern textures, each pattern is crafted for long-lasting performance and eye-catching appeal.

With helpful color guides, real in-water photos, and quick-glance features, this guide makes it easy to find the liner that fits your vision and your pool.

*Let’s get started.*

# HOW TO CHOOSE THE PERFECT LINER

## Step 1

### Consider Your Pool’s Environment

Sunlight, landscaping, and surrounding colors all impact how your liner will look. A shaded yard may benefit from lighter tones, while sun-drenched spaces can handle bolder colors.

## Step 2

### Choose a Water Color

Our patterns are grouped into four water color categories to help you visualize how each liner will appear when installed.

TROPICAL

SKY

CLASSIC

INTENSE

## Step 3

### Match the Features You Want

Look for icons throughout the brochure to find liners with the features that matter most to you.

<b>Vinyl Covered Features</b> .....	<b>6</b>
<b>Borderless</b> .....	<b>7</b>
<b>Textured</b> .....	<b>7</b>
<b>Pet Friendly</b> .....	<b>8 - 9</b>
<b>Shimmer</b> .....	<b>10 - 15</b>
<b>Artisan</b> .....	<b>16 - 21</b>
<b>Fusion</b> .....	<b>22 - 23</b>
<b>Prime</b> .....	<b>24 - 29</b>

## Step 4

### Select a Series

Each liner series offers a unique blend of design, durability, and value.





# Water Color

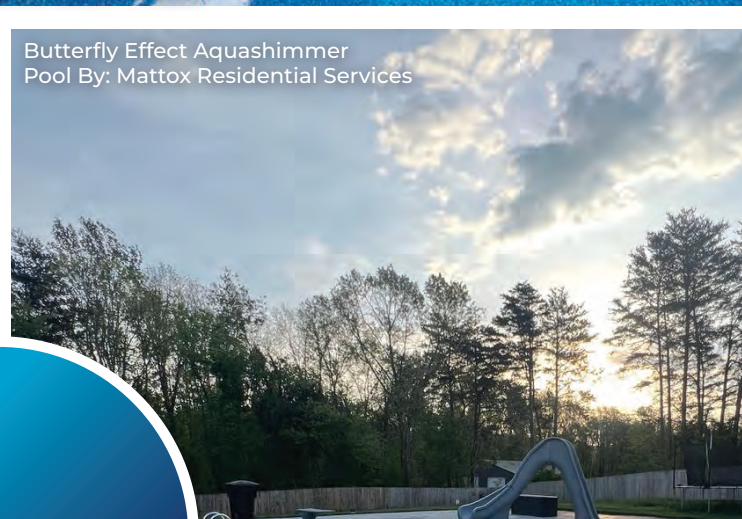
The way a liner looks in a pool depends on its color, pattern and how it interacts with sunlight and water depth. That's why we organize our patterns into four easy water color categories. These help you visualize how your pool will appear once filled. Whether you're dreaming of a vibrant Caribbean-style aqua or a rich, dramatic blue you're sure to find a look that suits you. Below, you'll find real examples of each water color group with sample pattern names. Use this as your starting point to narrow your favorites.



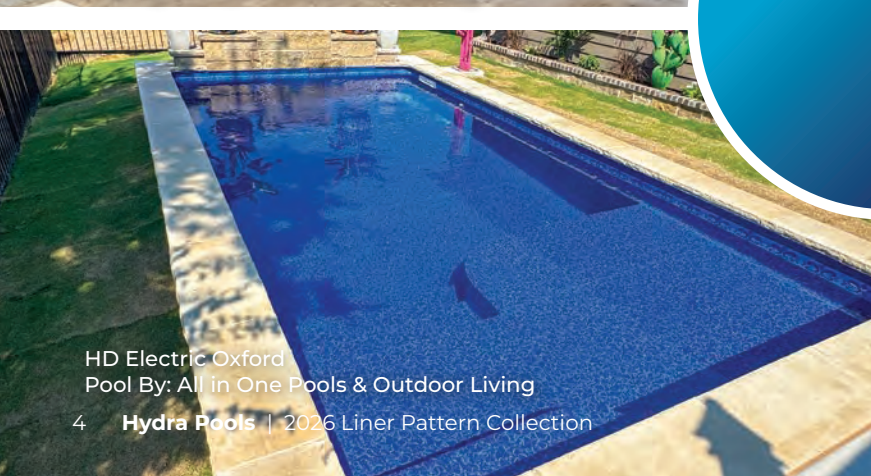
Bayview Slate  
Pool By: Volunteer Pools & Service



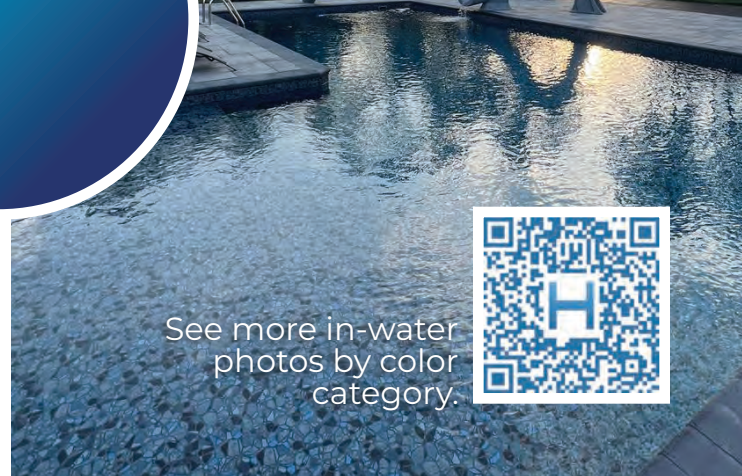
Blue Raliegh Blue Beach Pebble



Butterfly Effect Aquashimmer  
Pool By: Mattox Residential Services



HD Electric Oxford  
Pool By: All in One Pools & Outdoor Living



See more in-water  
photos by color  
category.



HD Electric Oxford

INTENSE

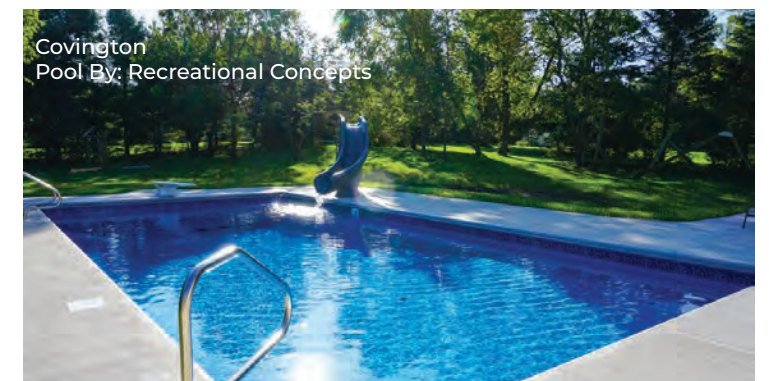
## INTENSE BLUE

A bold, deep water color that adds rich contrast and creates a striking, dramatic look in the pool.

CLASSIC

## CLASSIC BLUE

A balanced, true-blue tone that works well in most settings and delivers a clean, timeless appearance..



Covington  
Pool By: Recreational Concepts



Bayview Slate  
Pool By: Volunteer Pools & Service

SKY

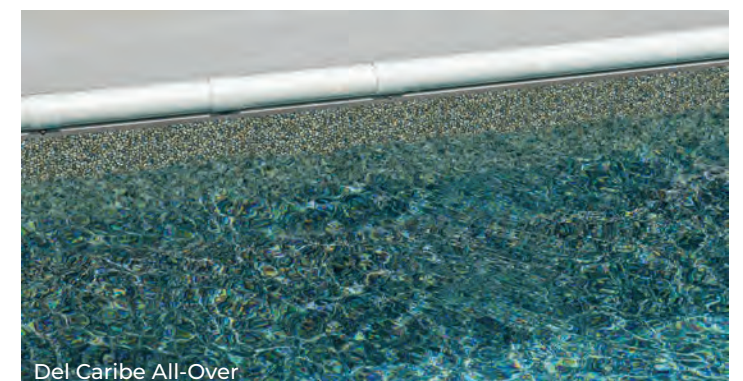
## SKY BLUE

A light, airy shade that brightens up the pool and gives the water a soft, refreshing feel.

TROPICAL

## TROPICAL BLUE

A vibrant blue-green tone that brings a playful, resort-style look to the water perfect for bright, sunny spaces.



Del Caribe All-Over



Your pool should be a reflection of how you live. Hydra liners can be customized to add comfort, style and safety in the areas that matter most. From smooth, borderless walls to textured steps and vinyl-covered benches, these upgrade options let you personalize your pool with thoughtful, built-in features.



Butterfly Effect Aquashimmer  
Pool By: Volunteer Pools & Service

## Vinyl Covered Features



Butterfly Effect Aquashimmer  
Pool By: Tier One Pools and Patios



Del Caribe All-Over  
Pool By: Brosio Pools

Hydra liners can be custom-fit to cover more than just the walls and floor of your pool. Add a seamless, finished look with vinyl-covered features designed to match your liner pattern. These upgrades blend in perfectly while adding comfort, safety and long-term durability.

## BorderLess

Borderless liners carry the floor pattern all the way up the wall, with no tile border at the top. It's a simple, modern style that gives your pool a smooth, continuous look. We offer many patterns in a borderless version and any pattern in this brochure can be ordered without a border for an additional charge.



Beach House Blue Grotto with No-Border Option

## Textured Patterns



HD Electric Oxford

Texture adds a soft nubby feel that provides grip for high-traffic areas and feels natural under your feet. Ideal for steps, benches and sun decks, textured vinyl blends in with your liner while adding a bit more comfort where it's needed most.

Need more grip on steps, benches or tanning ledges? Ask about textured liner options.



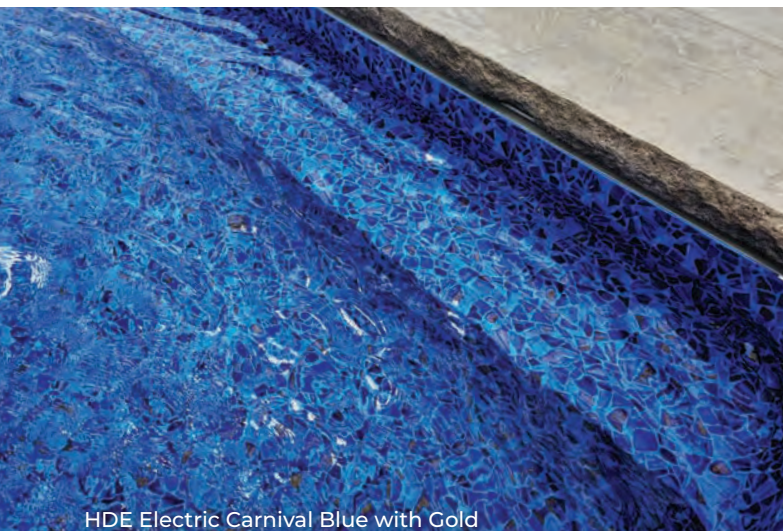
# Pet-Friendly Series

Dogs love the water just as much as we do, and now there's a liner that can keep up with their energy. Our Pet Friendly liners are made from **extra-thick 36 mil vinyl** that's **puncture resistant** up to 50 lbs.

You don't have to sacrifice style for strength. These liners come in two amazing designs that sparkle with shimmering gold accents.

Whether your dog is diving in or lounging on the steps, a Pet Friendly liner gives you peace of mind and a pool that stays looking great.

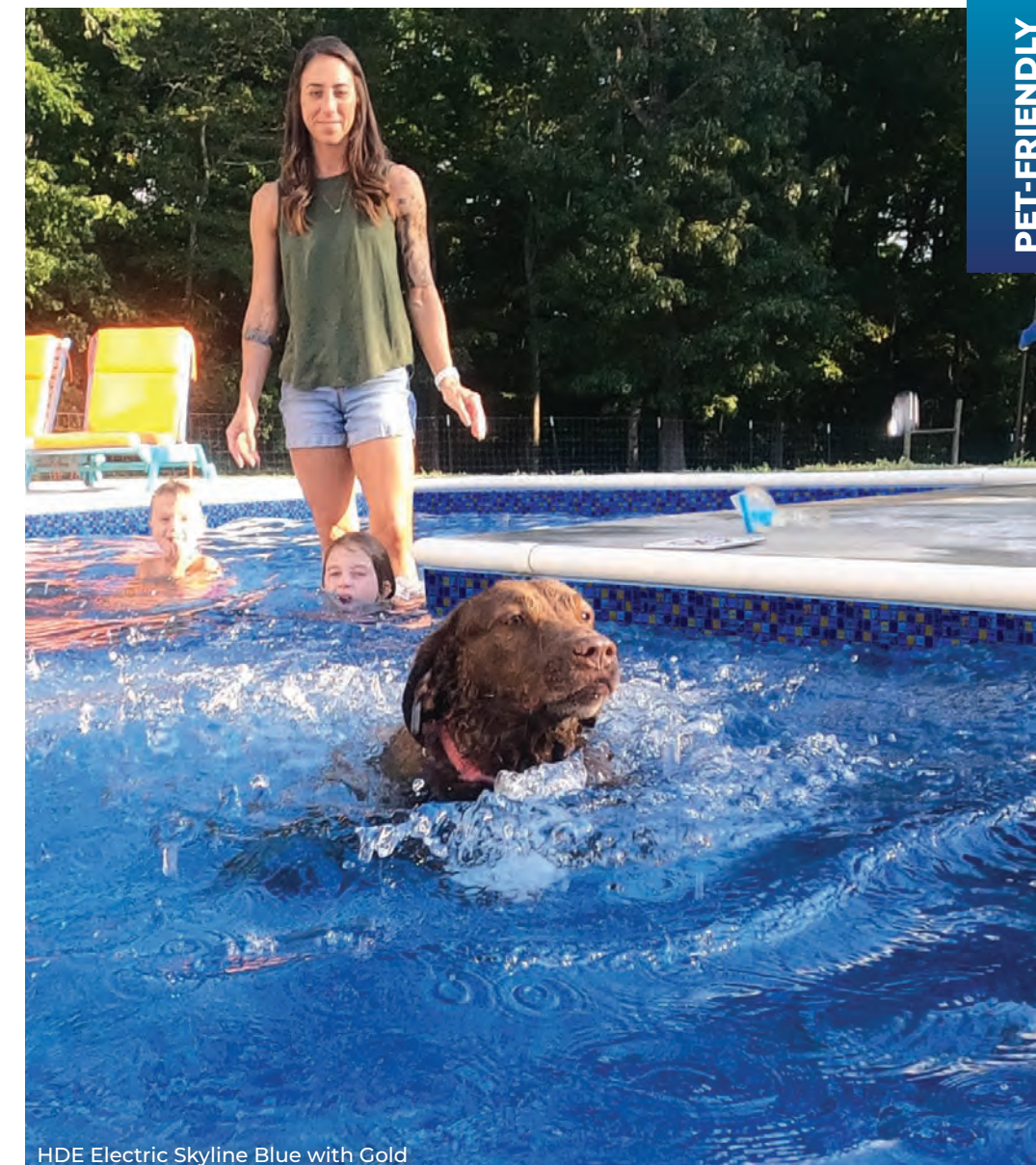
See Pet Friendly liners in action and learn more about the material.



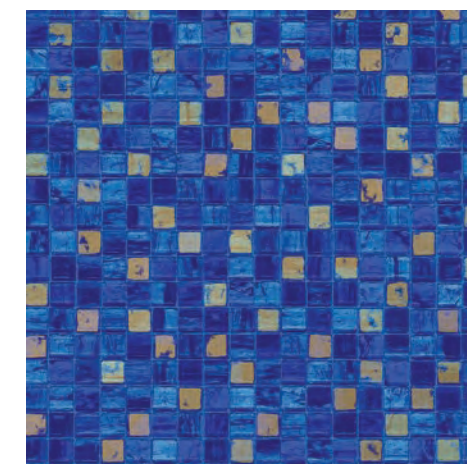
HDE Electric Carnival Blue with Gold



HDE Electric Carnival Blue with Gold

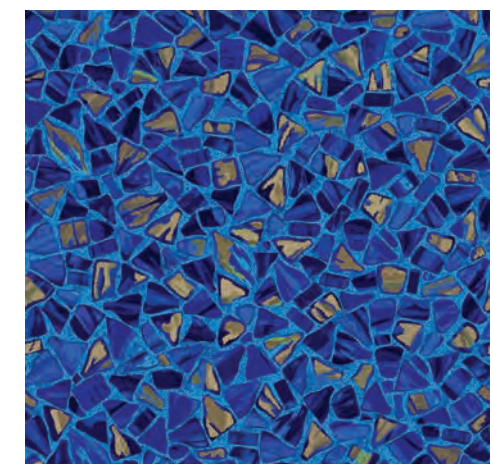


HDE Electric Skyline Blue with Gold



**HDE Electric Skyline Blue with Gold** \*

36 mil  
Textured Pattern Available



**HDE Electric Carnival Blue with Gold** \*

36 mil  
Textured Pattern Available

\*Indicates Up-Charge Will Apply on Selected Pattern

WWW.HYDRAPOOLES.COM 9



# Shimmer Series

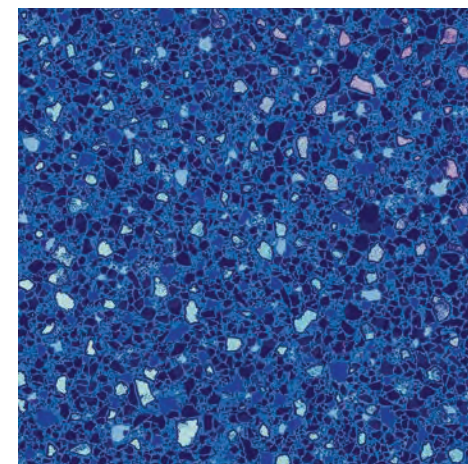
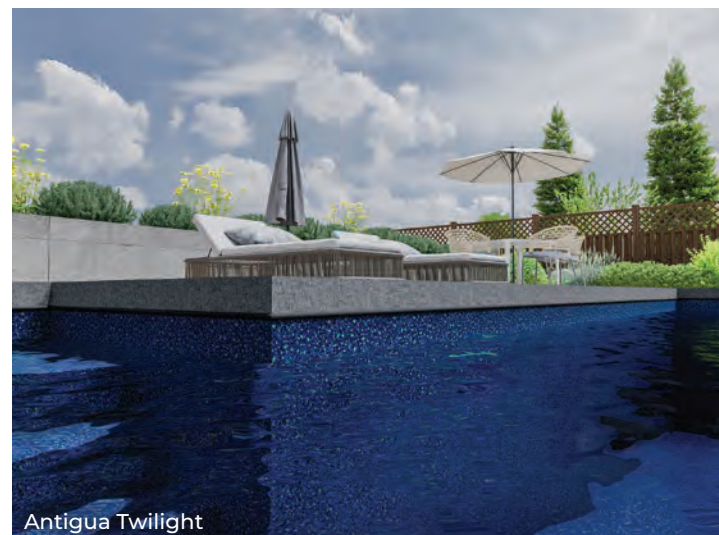
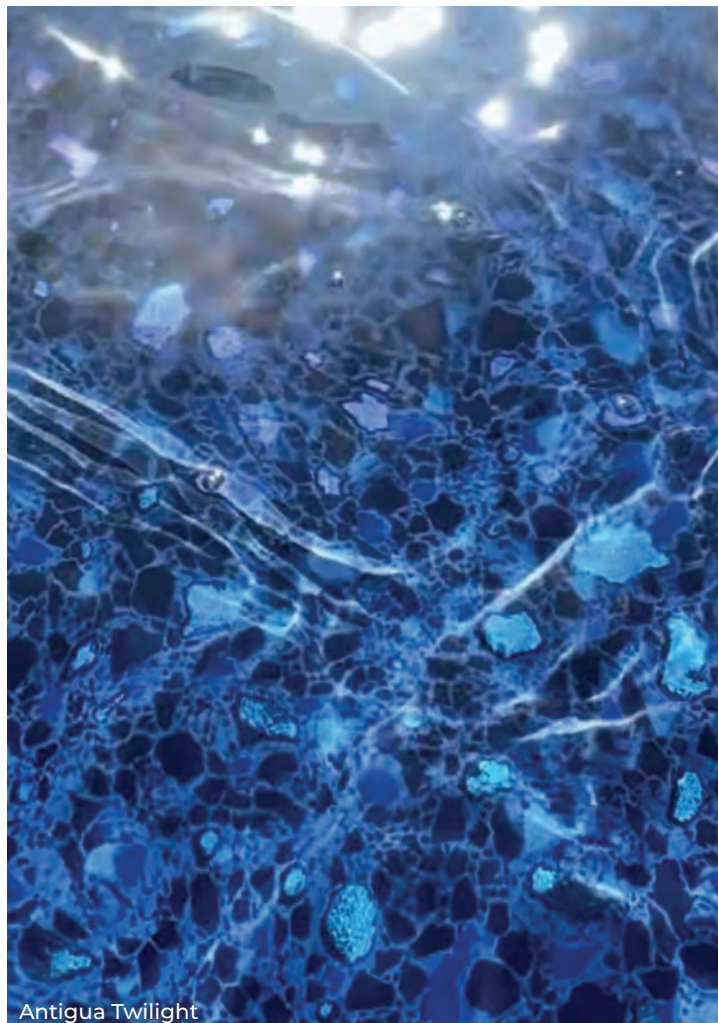
Shimmer liners add a subtle, sparkling effect that changes with the light. Made with Aquashimmer vinyl, these designs reflect sunlight and pool lighting to create movement and shine across the water's surface.

From soft glints to bold reflections, shimmer liners bring a little extra magic to your pool.

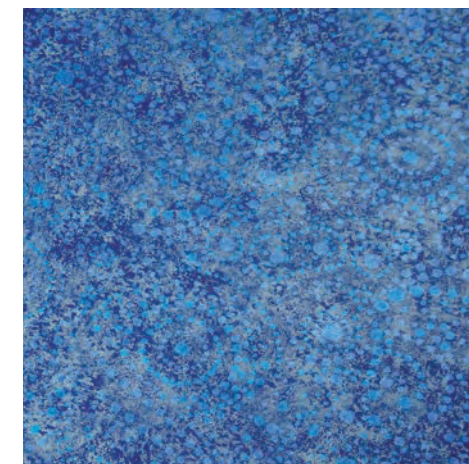
The effect is especially noticeable in the early morning and late afternoon, when light dances on the surface.

If you're looking for a liner that feels bright and full of life, these patterns offer something special.

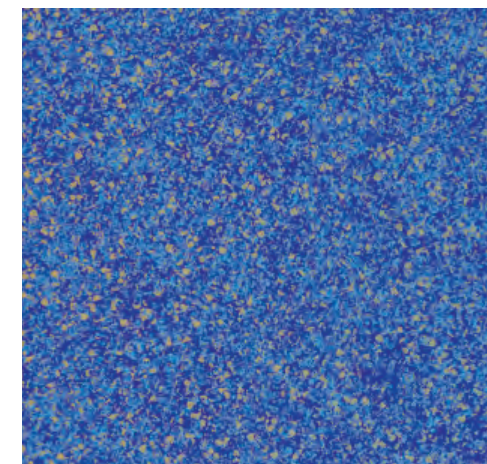
Watch how shimmer liners change with the light.



**Antigua Twilight** \*  
New for 2026  
28 mil  
Textured Pattern Available



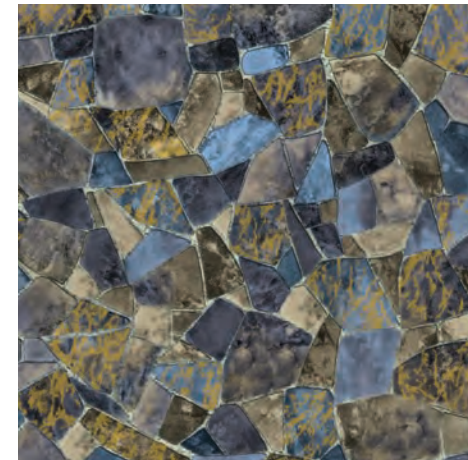
**Starlight Swirl** \*  
New for 2026  
27 mil  
Textured Pattern Available



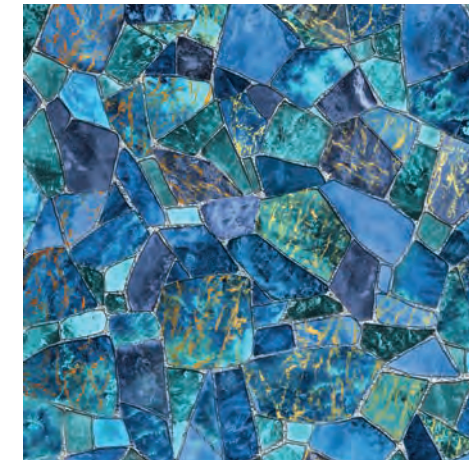
**Cirali Beach Gold** \*  
28 mil  
Textured Pattern Available



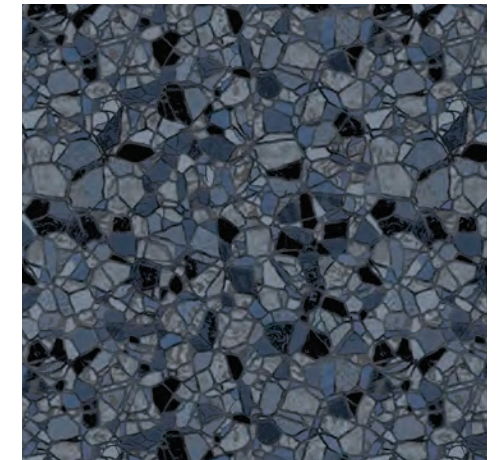
# SHIMMERSERIES



**Tan Seaglass** •  
New for 2026  
27 mil  
Textured Pattern Available



**Seaglass All-Over** •  
New for 2026  
27 mil  
Textured Pattern Available



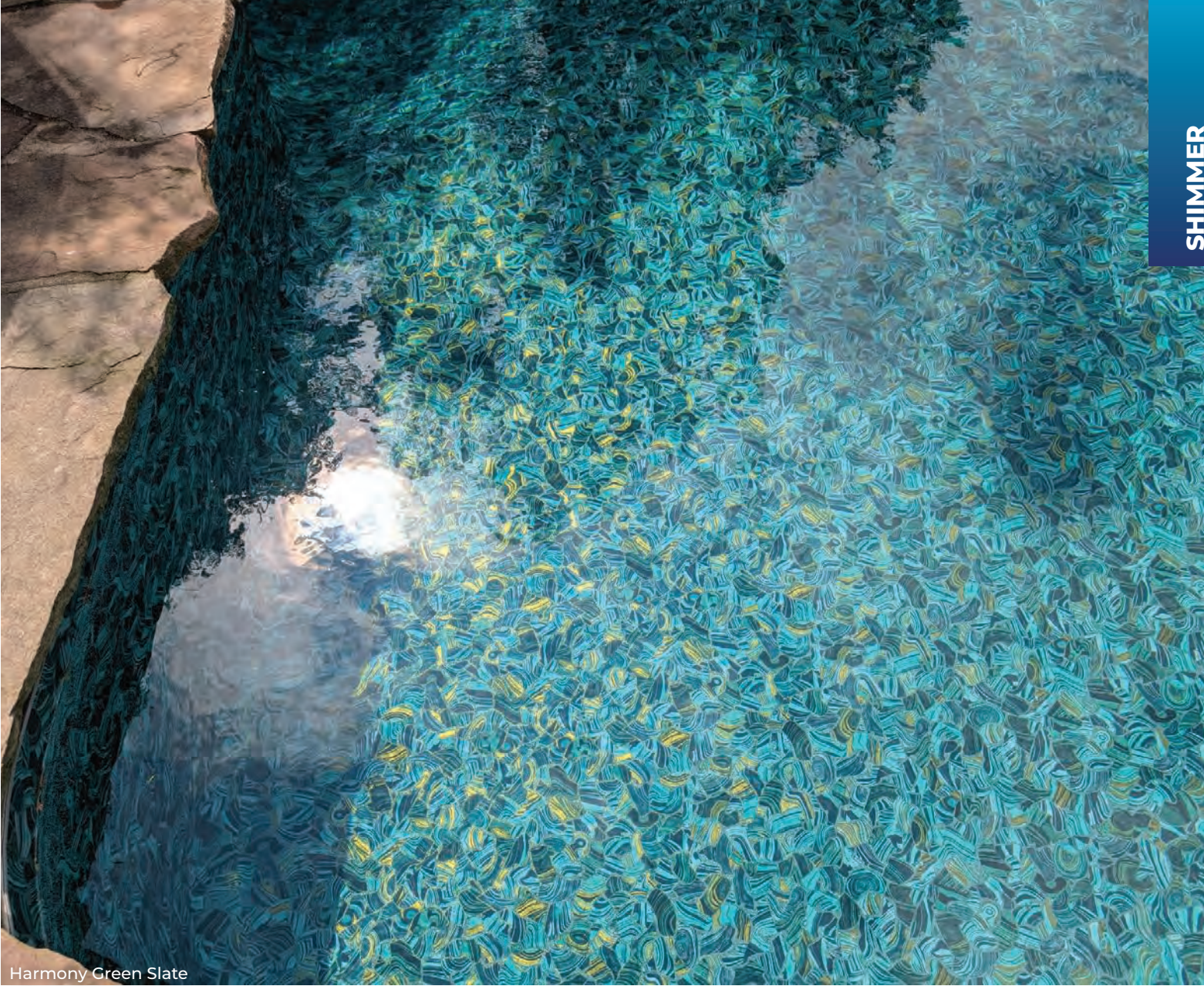
**Butterfly Effect Aquashimmer** •  
27 mil  
Textured Pattern Available



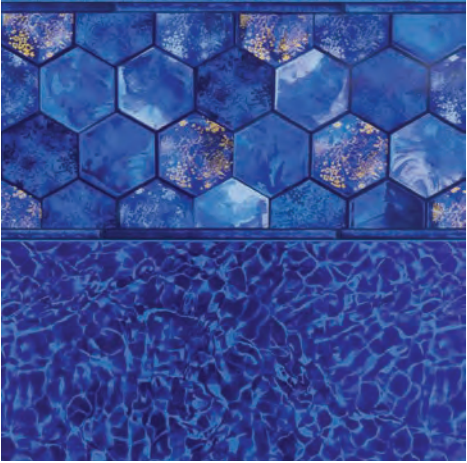
# SHIMMER SERIES



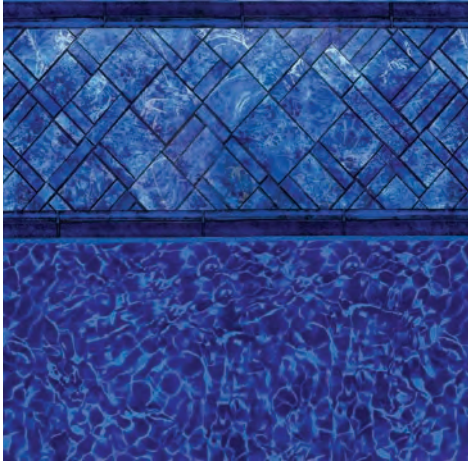
Santorini



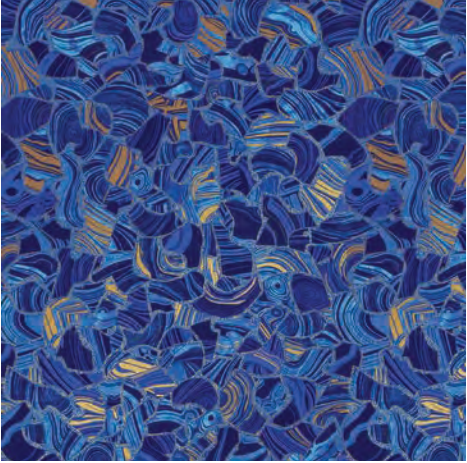
Harmony Green Slate



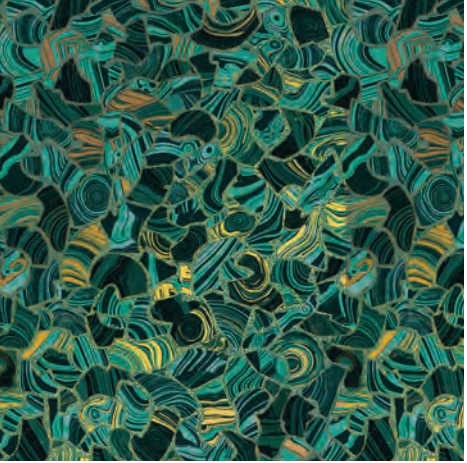
**Santorini**  
New for 2026  
27 mil  
Textured Pattern Available



**Prism Cove Brilliant Blue**  
New for 2026  
27 mil  
Textured Pattern Available



**Harmony HDE Blue** \*  
28 mil  
Textured Pattern Available



**Harmony Green Slate** \*  
28 mil  
Textured Pattern Available



**Harmony Medium Blue** \*  
28 mil  
Textured Pattern Available



# Artisan Series

Explore the full Artisan collection with more pool photos.



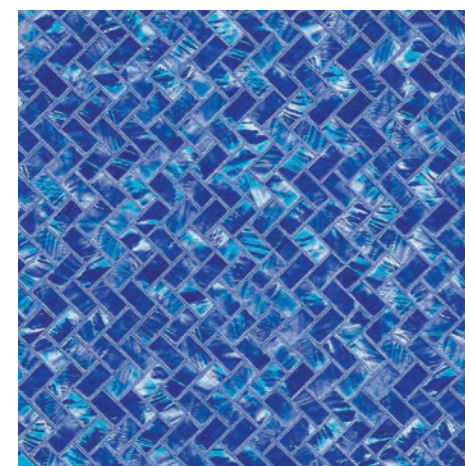
The Artisan Series is our most sophisticated liner collection. Bold design, innovative finishes and premium materials come together to create showstopping pools.

Inspired by natural textures, mosaics and coastal influences, these liners are crafted to elevate your entire backyard experience.

Whether you're going for dramatic depth or shimmering elegance, every pattern in the Artisan Series offers beauty and lasting quality.



Del Caribe All-Over



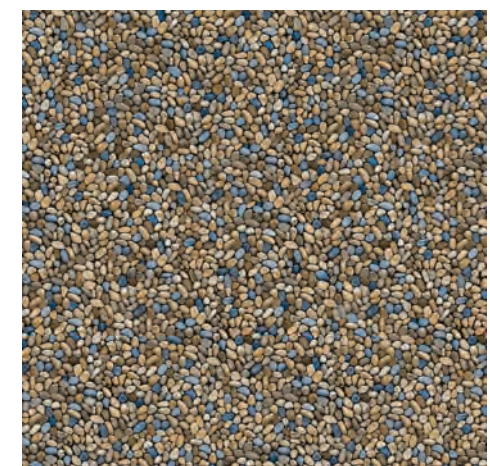
**Gladstone Mosaic**  
New for 2026

28 mil  
Textured Pattern Available



**Mosaic Wave**  
New for 2026

27 mil  
Textured Pattern Available

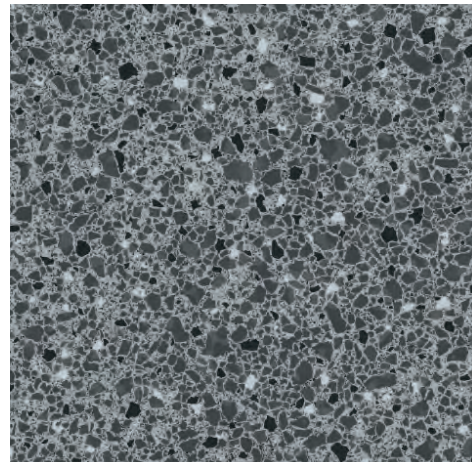


**Del Caribe**  
New for 2026

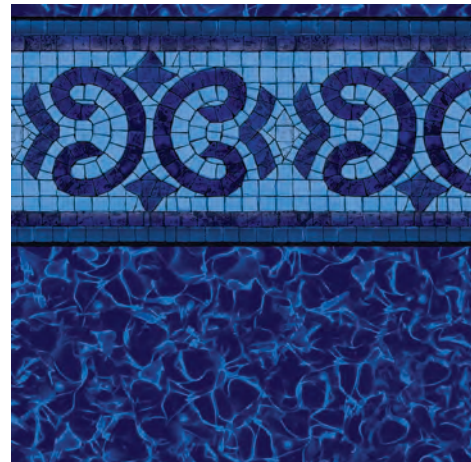
27 mil  
Textured Pattern Available



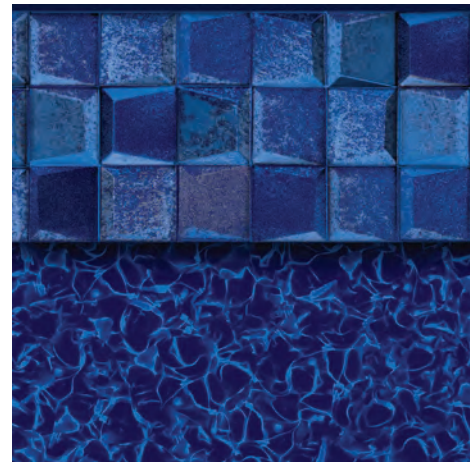
# ARTISAN SERIES



**Silver Antigua**  
28 mil  
Textured Pattern Available



**HD Electric Oxford**  
28 mil  
Textured Pattern Available



**HD Electric Breaking Seawall**  
28 mil  
Textured Pattern Available



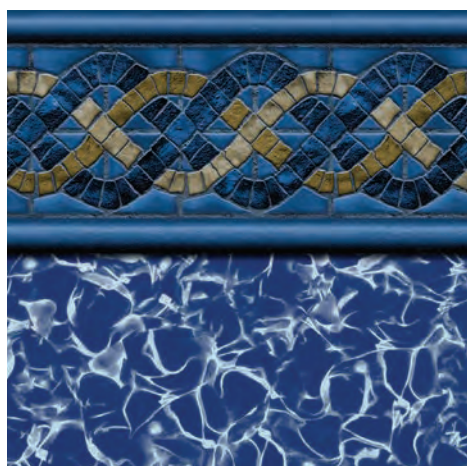
# ARTISAN SERIES



Cambridge Aquarius  
Pool By: Recreational Concepts



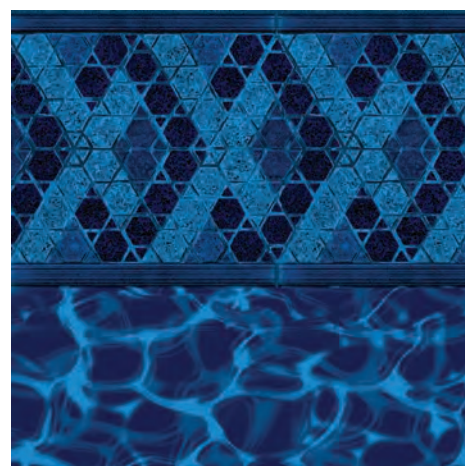
Clarkson Blue Beach Pebble



CLASSIC

## Cambridge Aquarius

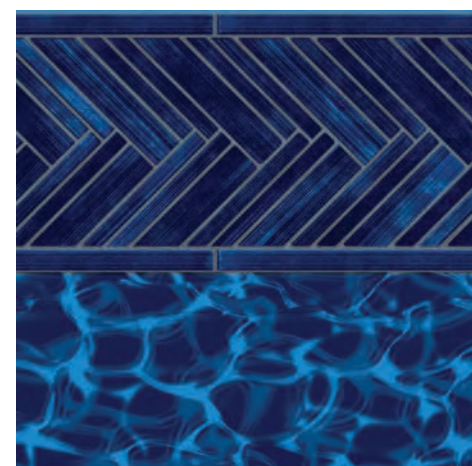
28 mil  
Textured Pattern Available



INTENSE

## Collage Mosaic Blue Grotto

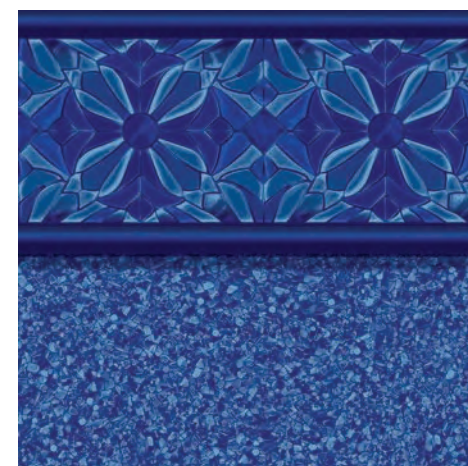
28 mil  
Textured Pattern Available



INTENSE

## Beach House Blue Grotto

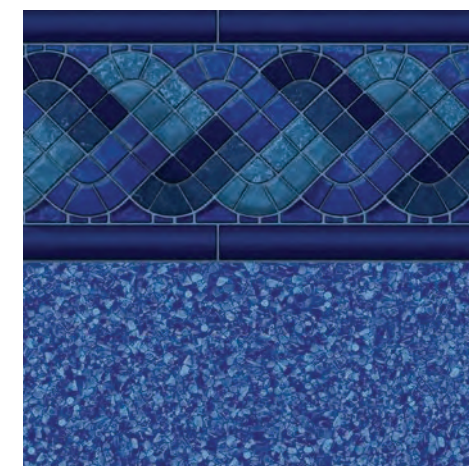
28 mil  
Textured Pattern Available



CLASSIC

## Clarkson Blue Beach Pebble

28 mil  
Textured Pattern Available



CLASSIC

## Blue Raleigh Blue Beach Pebble

28 mil  
Textured Pattern Available





# Fusion Series

Fusion liners combine the strength of 27 mil with the flexibility and value of 20 mil to give you the best of both worlds. The walls are made with thicker 27 mil material for added protection, while the floor uses 20 mil vinyl for more flexibility and an easier fit.

Explore the full Fusion collection with more pool photos.



For high traffic areas, our thicker textured material is a great option to add durability, grip and comfort. The Fusion Series is a smart blend of strength, flexibility and value.



Breton Braid  
Pool By: Recrational Concepts



Covington  
Pool By: Recrational Concepts



Covington  
Pool By: Phelps General Contracting



CLASSIC

## Covington

27/20 mil  
Textured Pattern Available



CLASSIC

## Breton Braid

27/20 mil  
Textured Pattern Available



# Prime Series

Prime Series liners offer a wide variety of colors and styles, all made with 20 mil vinyl for solid everyday performance. You'll find everything from light and deep blues to warm, cool and neutral tile patterns. Plus, our borderless designs offer a clean, modern look.

Explore the full Prime collection with more pool photos.



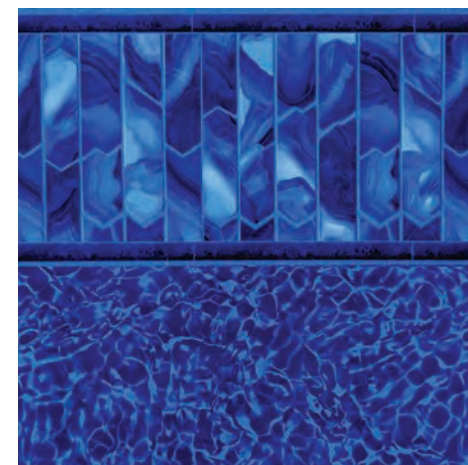
These liners are a great fit for new pools or replacements, with options that work in just about any backyard. Our Prime Series gives you quality you can count on, with designs that feel fresh, all at a great value.



Indigo Tide



Lake Tahoe



INTENSE

## Indigo Tide

New for 2026

20 mil  
Textured Pattern Available



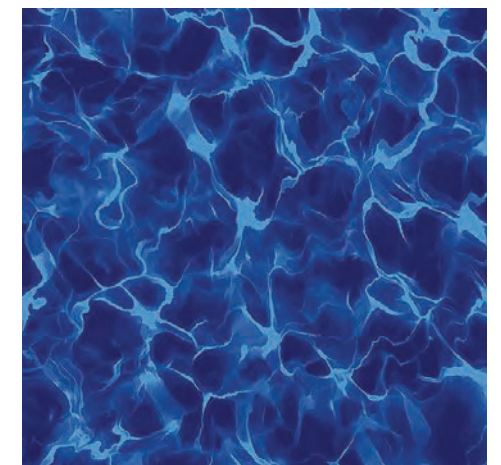
INTENSE

## Mosaic Wave

New for 2026

20 mil  
Textured Pattern Available

Also available in our Artisan Series pg. 17



CLASSIC

## Lake Tahoe

New for 2026

20 mil  
Textured Pattern Available



# PRIMESERIES



Siesta Wave Tan  
Pool By: Recreational Concepts

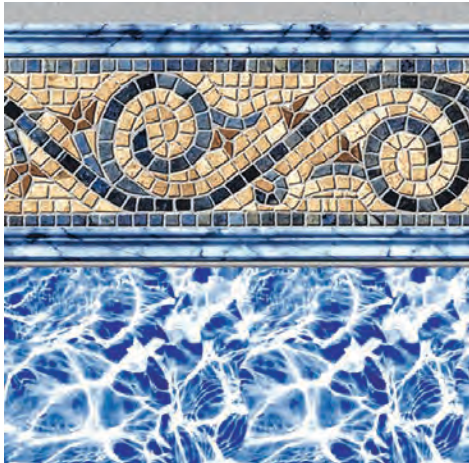


Bayview Slate Blue Diffusion  
Pool By: Independent Pool Professionals



**Bayview Slate**  
20 mil  
Textured Pattern Available

SKY



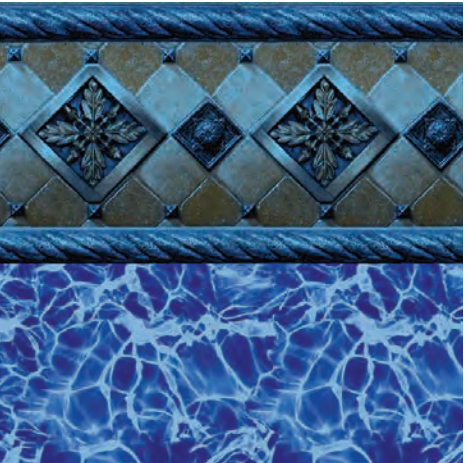
**Siesta Wave**  
20 mil  
Textured Pattern Available

SKY



**Rialto Blue Diffusion**  
20 mil  
Textured Pattern Available

CLASSIC



**Bayview Slate Blue Diffusion**  
20 mil  
Textured Pattern Available

CLASSIC





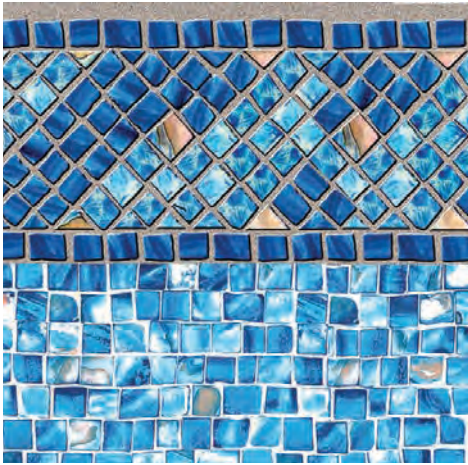
Amelia Oyster Bay  
Pool By: Weavers Waves



Sunburst Oyster Bay  
Pool By: Satterwhite Pools



Cobalt Oyster Bay All-Over  
Pool By: H2O Pools



**Amelia  
Oyster Bay**  
20 mil  
Textured Pattern Available



**Sunburst Oyster  
Bay**  
20 mil  
Textured Pattern Available



**Sunburst Cobalt  
Oyster Bay**  
20 mil  
Textured Pattern Available



**Lotus Cobalt  
Oyster Bay**  
20 mil  
Textured Pattern Available



**Oyster Bay All-  
Over**  
20 mil  
Textured Pattern Available





# 2026 VINYL LINER PATTERN COLLECTION

Explore  
our entire  
collection with  
more pool  
photos.



## SHIMMER SERIES

**Antigua Twilight** \*  
28 mil

**Starlight Swirl** \*  
27 mil

**Tan Seaglass** \*  
27 mil

**Santorini**  
27 mil

**Prism Cove**  
27 mil

**Seaglass All-Over** \*  
27 mil

**Butterfly Effect Aquashimmer** \*  
28 mil

**Cirali Beach Gold** \*  
28 mil

**Harmony HDE Blue** \*  
28 mil

**Harmony Green Slate** \*  
28 mil

**Harmony Medium Blue** \*  
28 mil

\* Indicates Up-Charge Will Apply on Selected Pattern

## ARTISAN SERIES

**Del Caribe All-Over**  
27 mil

**Mosaic Wave** \*  
27 mil

*Also available in our Prime Series*

**Gladstone Mosaic**  
28 mil

**Silver Antigua**  
28 mil

**Cambridge Aquarius**  
28 mil

**HD Electric Oxford**  
28 mil

**HD Electric Breaking Seawall**  
28 mil

**Collage Mosaic Blue Grotto**  
28 mil

**Beach House Blue Grotto**  
28 mil

**Clarkson Blue Beach Pebble**  
28 mil

**Blue Raleigh Blue Beach Pebble**  
28 mil

## WATERCOLOR CATEGORIES

Every liner creates a different water color depending on the design. Use this key to see how each pattern is expected to look in water.

**INTENSE**  
Intense Blue

**CLASSIC**  
Classic Blue

**SKY**  
Sky Blue

**TROPICAL**  
Tropical

## PET FRIENDLY SERIES

**HDE Electric Carnival Blue with Gold**  
36 mil

**HDE Electric Skyline Blue with Gold**  
36 mil

## FUSION SERIES

**Covington**  
27/20 mil

**Breton Braid**  
27/20 mil

## PRIME SERIES

**Indigo Tide**  
20 mil

**Mosaic Wave** \*  
20 mil

*Also available in our Artisan Series*

**Lake Tahoe**  
20 mil

**Bayview Slate**  
20 mil

**Siesta Wave Tan**  
20 mil

**Rialto Blue Diffusion**  
20 mil

**Bayview Slate Blue Diffusion**  
20 mil

**Sunburst Cobalt Oyster Bay**  
20 mil

**Lotus Cobalt Oyster Bay**  
20 mil

**Cobalt Oyster Bay All-Over**  
20 mil

**Amelia Oyster Bay**  
20 mil

**Sunburst Oyster Bay**  
20 mil





98.9 Ultra Mesh - Blue

# Safety Covers

Hydra safety covers are made to protect what matters most, your family, your pool and your investment. Engineered for strength and precision fit, our covers are custom-made to match any pool shape and built to withstand the toughest weather.

With decades of manufacturing experience and U.S. based craftsmanship, Hydra covers deliver long-lasting protection and a cleaner pool opening in spring.



Solid Vinyl Cover with Drain Panel - Green



Solid Vinyl Cover with Pump - Tan



800-518-4199

[WWW.HYDRAPOOLS.COM](http://WWW.HYDRAPOOLS.COM)



YOUR HYDRA POOLS DEALER