

# Aptiv - EyeMed Vision Plan (Hourly)



Save even more  
with PLUS Providers

**\$50**  
Additional frame  
allowance from  
PLUS Providers\*

\*Compared to \$100 frame allowance at other EyeMed in-network providers

Find an eye doctor  
(Insight Network)

- [eyemed.com](http://eyemed.com)
- 866-800-5457
- Group #1033975
- EyeMed Members App
- For LASIK, call 1.800.988.4221

## SUMMARY OF BENEFITS

VISION CARE SERVICES	IN-NETWORK MEMBER COST	OUT-OF-NETWORK MEMBER REIMBURSEMENT
<b>EXAM SERVICES</b>		
Exam at PLUS Provider	\$0 copay	Up to \$37
Exam	\$0 copay	Up to \$37
Retinal Imaging	Up to \$39	Not covered
<b>CONTACT LENS FIT AND FOLLOW-UP</b>		
Fit & Follow-up - Standard	Up to \$40; contact lens fit and two follow-up visits	Not covered
Fit & Follow-up - Premium	10% off retail price	Not covered
<b>FRAME</b>		
Frame at PLUS Provider	\$0 copay; 20% off balance over \$150 allowance	Up to \$100
Frame	\$0 copay; 20% off balance over \$100 allowance	Up to \$100
<b>STANDARD PLASTIC LENSES</b>		
Single Vision	\$0 copay	Up to \$30
Bifocal	\$0 copay	Up to \$50
Trifocal	\$0 copay	Up to \$50
Lenticular	\$0 copay	Up to \$90
Progressive - Standard	\$50 copay	Up to \$50
Progressive - Premium Tier 1 - 4	\$80 - 175 copay	Up to \$50
<b>LENS OPTIONS</b>		
Anti Reflective Coating - Standard	\$35 copay	Up to \$23
Anti Reflective Coating - Premium Tier 1 - 3	\$47 - 85 copay	Up to \$23
Photochromic - Non-Glass	\$65 copay	Up to \$65
Polycarbonate - Standard	\$30 copay	Up to \$20
Polycarbonate - Standard < 19 years of age	\$0 copay	Up to \$20
Scratch Coating - Standard Plastic	\$0 copay	Up to \$15
Tint - Solid and Gradient	\$15	Not covered
UV Treatment	\$12 copay	Up to \$12
All Other Lens Options	20% off retail price	Not covered
<b>CONTACT LENSES</b>		
Contacts - Conventional	\$0 copay; 15% off balance over \$80 allowance	Up to \$80
Contacts - Disposable	\$0 copay; 100% of balance over \$80 allowance	Up to \$80
Contacts - Medically Necessary	\$0 copay; paid-in-full	Up to \$210
<b>OTHER</b>		
Hearing Care from Amplifon Network	Discounts on hearing exam and aids; call 1.877.203.0675	Not covered
Lasik or PRK from U.S. Laser Network	15% off retail or 5% off promo price; call 1.800.988.4221	Not covered
<b>FREQUENCY</b>		
	ALLOWED FREQUENCY - ADULTS	ALLOWED FREQUENCY - KIDS
Exam	Once every plan year	Once every plan year
Frame	Once every plan year	Once every plan year
Lenses	Once every plan year	Once every plan year
Contacts Lenses	Once every plan year	Once every plan year
(Plan allows member to receive either contacts and frame, or frame and lens services)		

QL-0000044342

EyeMed reserves the right to make changes to the products available on each tier. All providers are not required to carry all brands on all tiers. For current listing of brands by tier, call 866-939-3633. No benefits will be paid for services or materials connected with or charges arising from: medical or surgical treatment, services or supplies for the treatment of the eye, eyes or supporting structures; Refraction, when not provided as part of a Comprehensive Eye Examination; services provided as a result of any Workers' Compensation law, or similar legislation, or required by any governmental agency or program whether federal, state or subdivisions thereof; orthoptic or vision training, subnormal vision aids and any associated supplemental testing; Aniseikonic lenses; any Vision Examination or any corrective Vision Materials required by a Policyholder as a condition of employment; safety eyewear; solutions, cleaning products or frame cases; non-prescription sunglasses; plano (non-prescription) lenses; plano (non-prescription) contact lenses; two pair of glasses in lieu of bifocals; electronic vision devices; services rendered after the date an Insured Person ceases to be covered under the Policy, except when Vision Materials ordered before coverage ended are delivered, and the services rendered to the Insured Person are within 31 days from the date of such order; or lost or broken lenses, frames, glasses, or contact lenses that are replaced before the next Benefit Frequency when Vision Materials would next become available. Fees charged by a Provider for services other than a covered benefit and any local, state or Federal taxes must be paid in full by the Insured Person to the Provider. Such fees, taxes or materials are not covered under the Policy. Allowances provide no remaining balance for future use within the same Benefit Frequency. Some provisions, benefits, exclusions or limitations listed herein may vary by state. Plan discounts cannot be combined with any other discounts or promotional offers. In certain states members may be required to pay the full retail rate and not the negotiated discount rate with certain participating providers. Please see online provider locator to determine which participating providers have agreed to the discounted rate.

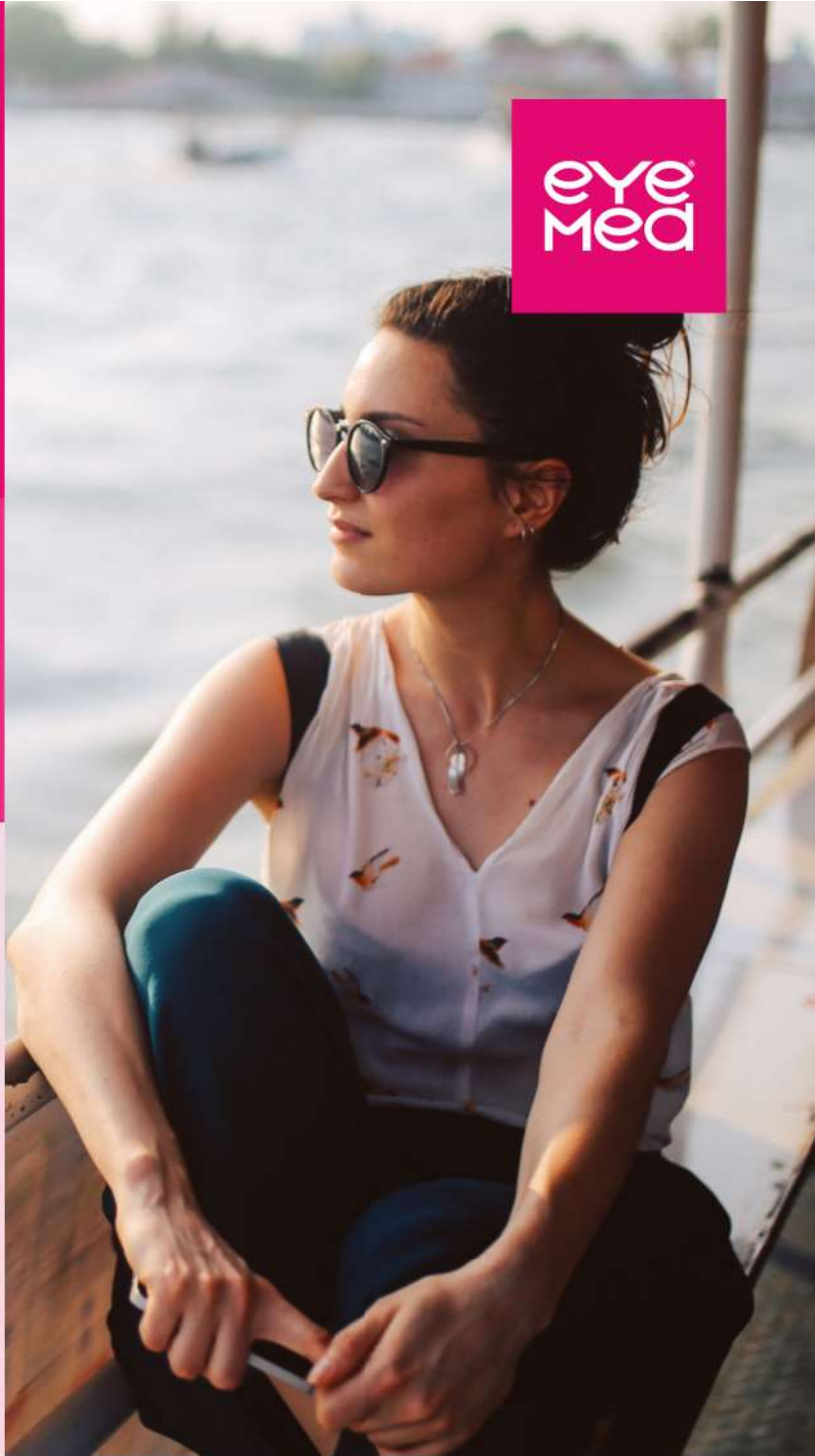
# Expect more from your benefits

eye  
Med

EyeMed vision benefits include access to PLUS Providers to help you save even more

You save more at an in-network provider – an average of 71% more off the retail price of eye exams and glasses.\* Choosing a PLUS Provider can boost those savings.

Since PLUS Providers are already in our network, the extra perks are built right into your vision benefits. No promo codes, no coupons, no paperwork, no claims. The same vision care, plus a little more savings.



## The choice is yours

Find plenty of in-network eye doctors—including PLUS Providers—on our Provider Locator.

Just look for the PLUS.

INDEPENDENT  
PROVIDER  
NETWORK



LENSCRAFTERS<sup>®</sup>

PEARLE  
EST. 1961  
VISION<sup>™</sup>

OPTICAL<sup>™</sup>