



# Kupferle Product Booklet

*Celebrating 160 Years of Quality!*

[www.hydrants.com](http://www.hydrants.com) | [info@hydrants.com](mailto:info@hydrants.com)

800-231-3990 | 314-231-2820 fax

## Intelligent Monitoring and Flushing

### Eclipse *i*-Series #9750*i* Intelligent Water Quality Device (aka Flushing Buddy)

- Designed for use when flushing hydrants for unidirectional/water quality flushing
- Monitors water quality and provides audio/visual alert when parameters are met
- Captures all water quality and flushing data on micro SD and is SCADA compatible
- Accommodate up to 6 sensors plus pressure (CL, pH, temperature, turbidity, etc.)
- Lockable polypropylene case connects directly to hydrant or with a connecting hose



### Eclipse *i*-Series #9300WC*i* / #9300*i*-MB Intelligent Monitoring Station

- Chlorine analyzer and PLC monitor residuals and other aspects of water quality
- Can accommodate multiple sensors
- Captures all CI and flushing data on micro SD and is SCADA compatible
- Lockable UV resistant enclosures or wall-mounted unit (MB)
- 120VAC power or 24VDC solar required

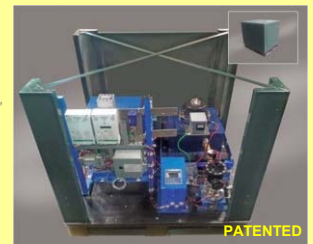
The Intelligent Solution for Water Distribution Systems  
**ECLIPSE**  
*i series*



### Eclipse *i*-Series #9800*i*- GENESIS Monitoring & Flushing Station

- Incorporated water turbine/battery bank provides power from flushed water
- Chlorine analyzer and PLC monitor residuals and flushes as required
- Captures all CI and flushing data on micro SD and is SCADA compatible
- Optional monitoring for pH, temperature, psi, turbidity, conductivity, ORP, etc.
- Lockable AlumaKlad enclosure for warm and cold climates with 2" FIP connection

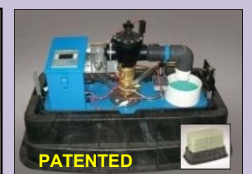
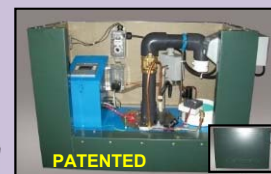
**ECLIPSE**  
*i series*



### Eclipse *i*-Series #9800*i* / #9800WC-*i* Intelligent Monitoring & Flushing Station

- Chlorine analyzer and PLC monitor residuals / flush as required
- Flushes when residual levels fall below prescribed levels
- Captures all CI and flushing data on micro SD and is SCADA compatible
- Lockable UV resistant enclosures with 2" MIP connection
- 120VAC power or 24VDC solar required

The Intelligent Solution for Water Distribution Systems  
**ECLIPSE**  
*i series*



### Eclipse *i*-Series #9700*i*-Solar Portable Intelligent Monitoring & Flushing Station

- Portable station w/built-in Chlorine analyzer and PLC
- Flushes when Cl levels fall below prescribed levels
- Captures all CI and flushing data on micro SD and is SCADA compatible
- Operates on 24VDC battery power (additional)
- Attaches to existing fire hydrant (2½" NST)

The Intelligent Solution for Water Distribution Systems  
**ECLIPSE**  
*i series*





2511 North 9<sup>th</sup> Street  
St. Louis, MO 63102

## Automatic Flushing

### Eclipse #9700 Automatic Flushing Station (2")

- Portable station attaches to existing fire hydrant (2½" NST)
- Adjustable flow rates up to 200 gpm (1" model 60 gpm)
- Operates on 9-volt battery (2)
- Lockable aluminum enclosure
- Dechlorination option and other accessories available

**ECLIPSE™**



### Eclipse #9400 Automatic Flushing Station (2")

- Permanent station with diffused surface discharge
- Designed for year-round flushing in cold climates
- Adjustable flow rates up to 200 gpm (1" model 60 gpm)
- Lockable UV resistant enclosure
- Operates on 9-volt battery (2)

**ECLIPSE™**

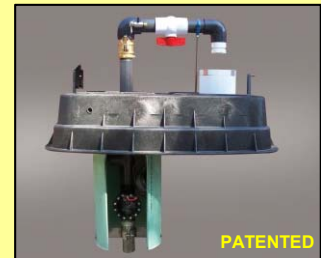


### Eclipse #9800 Automatic Flushing Station (2")

- Permanent station with direct below grade discharge to storm/sanitary sewer
- Designed for year-round flushing in cold climates
- Adjustable flow rates up to 200 gpm (1" model 60 gpm)
- Lockable UV resistant enclosure
- Operates on 9-volt battery (2)



**ECLIPSE™**



### Eclipse #9400WC Automatic Flushing Station (2")

- Permanent station with diffused surface discharge
- Designed for year-round flushing in warm climates
- Adjustable flow rates up to 200 gpm (1" model 60 gpm)
- Lockable UV resistant enclosure
- Operates on 9-volt battery (2)

**ECLIPSE™**

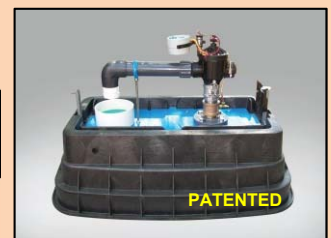


### Eclipse #9800WC Automatic Flushing Station (2")

- Permanent station with direct below grade discharge to storm/sanitary sewer
- Designed for year-round flushing in warm climates
- Adjustable flow rates up to 150 gpm (1" model 60 gpm)
- Lockable UV resistant enclosure
- Operates on 9-volt battery (2)



**ECLIPSE™**



### Eclipse #9497A/#9497B Automatic Flushing Stations (1")

- Permanent stations that fit inside a meter box
- #9497A connects onto a standard meter setter / #9497B into a meter resetter
- Adjustable flow rates up to 60 gpm
- Operates on 9-volt battery (2)

**ECLIPSE™**





2511 North 9<sup>th</sup> Street  
St. Louis, MO 63102

## Sampling Stations

### Eclipse #88 Series Sampling Stations

- Provides safe, secure site for sampling from water main
- Non-draining to avoid cross contaminants
- Warm and cold climate units available
- Fully serviceable from above ground
- Lockable aluminum enclosure
- All brass or stainless steel waterway

**ECLIPSE™**

Eclipse 88  
Cold Climate  
All Brass  
Waterway



Eclipse 88-SS  
Cold Climate  
All Stainless  
Steel Waterway



Eclipse 88WC  
Warm Climate  
All Brass  
Waterway



Eclipse 88WC-SS  
Warm Climate  
All Stainless Steel  
Waterway



### MainGuard #66 Series Sampling Stations

- Provides safe, secure site for sampling from water main
- Non-draining to avoid cross contaminants
- Warm and cold climate units available
- Fully serviceable from above ground
- Lockable aluminum enclosure
- All surgical stainless steel waterway

**MAINGUARD™**

MainGuard 66MB  
Interior Mounting



MainGuard 66  
Cold Climate



MainGuard 66WC  
Warm Climate



MainGuard  
66D/66WC-D  
Optional Plastic  
Enclosure

### MainGuard #94WM/95WM Sampling Stations

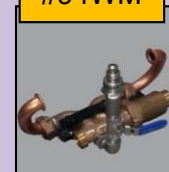
- Perfect for complying with Total Coliform upstream/downstream regulations
- Special threaded nipple superior to quick disconnect models
- Installs into existing meter box and setter
- Spring loaded valve makes collection easy
- Samples pulled from the main side of unit
- PVC or brass construction
- 1" models also available

**MAINGUARD™**

#95WM



#94WM



Sampling Rod  
and Case



2511 North 9<sup>th</sup> Street  
St. Louis, MO 63102

## Manual Flushing

### Eclipse #2 Post Flushing Hydrant

- 2" post hydrant with flow rates starting at 675gpm @ 75psi
- Multiple inlet selections up to 3" IP and 4" MJ
- Self-draining, non-freezing
- All Kupferle products serviceable from above ground
- Outlet 2½" NST or smaller

**ECLIPSE™**



### MainGuard #77/#78 Blow-Off

- Unique valve design allows for an unobstructed flow
- 2" blow-off with flow rates starting at 380 gpm @ 75 psi
- Available in above and below grade versions
- Horizontal or Vertical 2" Inlet (IP or MJ)
- Self-draining, non-freezing

**MAINGUARD™**



### MainGuard #7500/#7600 Blow-Off

- Unique valve design allows for an unobstructed flow
- 4" blow-off with flow rates starting at 1500 gpm @ 75 psi
- Available in above and below grade versions
- Multiple inlet selections of 4" or 6" MJ
- Self-draining, non-freezing

**MAINGUARD™**



### Truflo #TF500/#TF550 Blow-Off

- Unique valve design allows for an unobstructed flow
- 2" Blow-Off fits inside 5¼" valve box
- Flow rates of 400 gpm @ 75 psi
- All brass working parts

**TRUFLO™**

