

# PERFORMANCE PROPERTIES

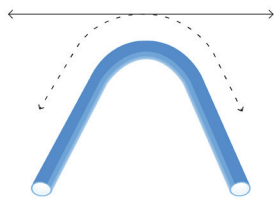
## Ease of Installation. Longevity. Resiliency.

With an aging municipal infrastructure, changes in quality, treatment practices and maintenance pose difficult challenges for suppliers, municipalities and residents. Unlike other municipal service lines that need to be replaced frequently, MUNICIPEX is resistant to common field problems and provides unbeatable properties.

With these properties, MUNICIPEX helps save time, materials and cost.



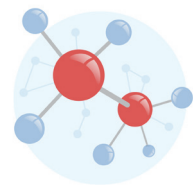
Flexible + Lightweight



Kink Resistant



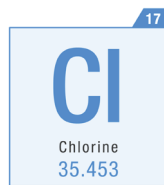
Erosion + Corrosion  
Resistant



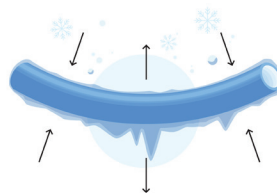
Chemical Resistant



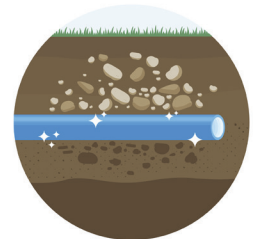
Mineral Build-up Resistant



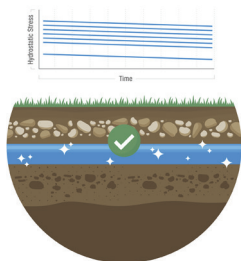
Chlorine Resistant



Freeze-break Resistant



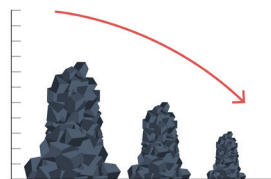
Impact + Abrasion  
Resistant



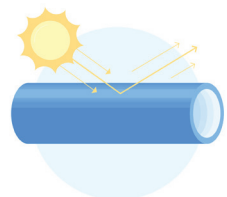
Slow Crack Growth  
Resistant



Native Backfill  
Compatible



Lower Carbon Footprint  
Compared to Copper<sup>1</sup>



UV Resistant  
up to 1 year

<sup>1</sup>Source: This is based on all the processes associated with product life cycle. (Study by the Flemish Institute of Technological Research)