



ShuvlNose® Adaptor

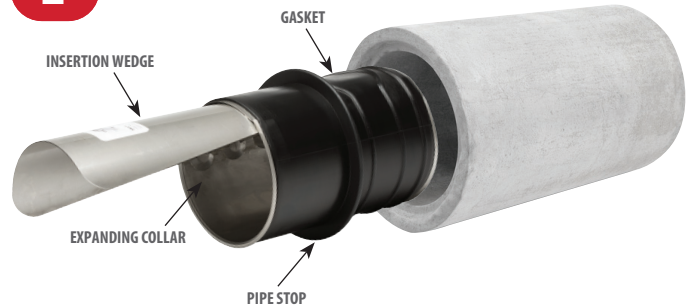
The *ShuvlNose® Adaptor* is used to establish a reliable connection between pipes with **similar inside diameters and widely different outside diameters**.

1



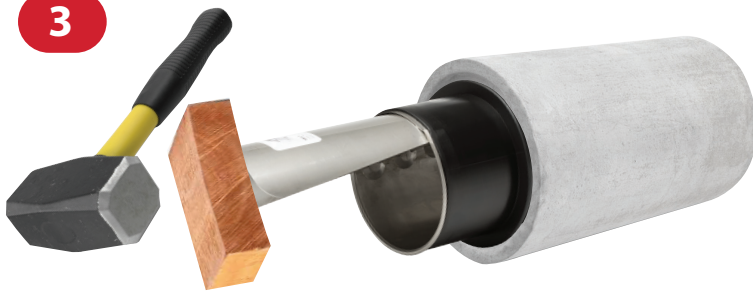
Apply lubricant to the inner surface contact area of the larger pipe.

2



Ensuring the wedge is in line with the top of the pipe, insert the ShuvlNose® Adaptor gasket into the larger pipe up to the pipe stop.

3



Using a hammer and 2 x 4 wood, pound in the wedge until the collar is fully expanded.

4



Using a metal cutting tool, cut the wedge flush with the gasket and steel collar. Clean the cylinder, ensuring no steel particles remain inside.

5

**MAXADAPTOR®
Coupling**



Tighten both sides of the MAXADAPTOR® Coupling, alternating back and forth.

6

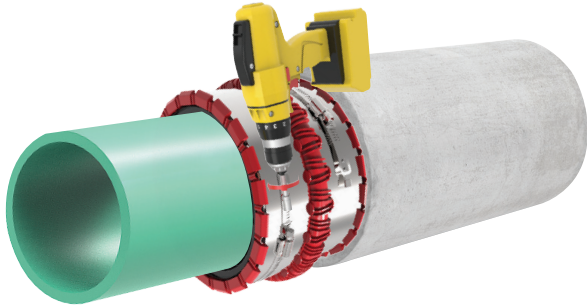


When the coupling ID's are closely matched to the pipe/adaptor OD's, install the MAXADAPTOR® Coupling onto the ShuvlNose® Adaptor. Take up all slack in coupling with a cordless drill or socket wrench.



ShuvlNose[®] Adaptor

7



Insert the smaller pipe into the MAXADAPTOR[®] Coupling and take up all slack in coupling with a cordless drill or socket wrench. Complete the installation by tightening the tension clamp, alternating back and forth, to 80 in/lbs. minimum torque.

ShuvlNose[®] Adaptor



Installation Instructions

Visit **MAXADAPTOR** - YouTube channel to see the ShuvlNose[®] Adaptor installation video.

Gripper Gasket LLC
1660 Leeson Lane | Corona, CA 92879
(951) 479-4999 | (951) 479-4997 Fax
maxadaptor.com

Rev. 02/20