

# Kozy Kanopy

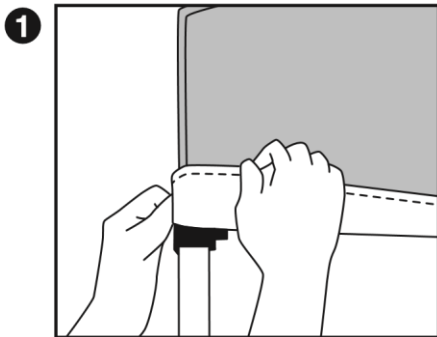
## SINGLE WALL INSTRUCTIONS

Designed to be used with our 10' Kozy Kanopy (straight leg) kanopy.

**INCLUDES: (1) SINGLE WALL**

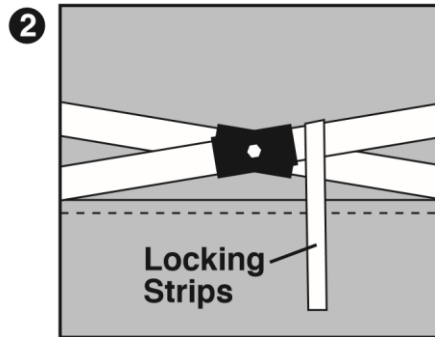
### SINGLE WALL SET UP

Please read each step before you attempt to set up. Save these instructions for future reference.



Single wall should be attached **BEFORE** Kanopy is staked down and Kanopy frame **SET** to the highest leg position. **Single wall can be attached to any side desired.**

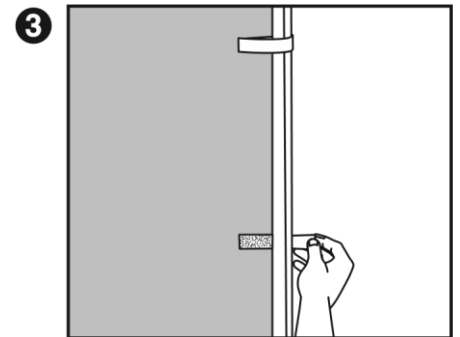
**STEP 1:** Fold the Kanopy fabric top back halfway up at corner before you attach the single wall.



From inside of your Kanopy.

**STEP 2:** Attach wall to the frame top by wrapping the **locking strips** around the upper trusses and above the push button sliders.

*Press top locking strips together firmly.*



**STEP 3:** Attach the side **locking strips** around the frame leg. *Repeat for remaining leg.*

Press all **locking strips** firmly to secure single wall. Once finished, fold the Kanopy fabric top back down over the frame and single wall.

### INFORMATION

1. The Kanopy is designed as a temporary sun shelter. Do not leave unattended Kanopy up for extended periods.
2. Do not use in any potentially windy or rainy weather. Wind and rain can damage your Kanopy and may also result in injury to you or others. Therefore, do not rely on the Kanopy for protection in heavy or prolonged rain storms.
3. Use caution when handling the Kozy Kanopy frame. Avoid pinching hands or fingers when frame opens or closes.
4. Always stake or weigh down your Kanopy.
5. Handle your Kozy Kanopy single wall with care to avoid rips and tears. Do not store single wall with stakes.
6. Do not use Kanopy in a lightning storm.

#### WARNING!

**KEEP ALL FLAME AND HEAT SOURCES AWAY FROM THIS TENT FABRIC.**  
THIS TENT MEETS THE FLAMMABILITY REQUIREMENTS OF CPAI-84. THE FABRIC MAY BURN IF LEFT IN CONTINUOUS CONTACT WITH ANY FLAME SOURCE. THE APPLICATION OF ANY FOREIGN SUBSTANCE TO THE TENT FABRIC MAY RENDER THE FLAME-RESISTANT PROPERTIES INEFFECTIVE.