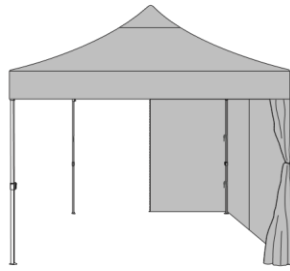


Shown with (2) Sunshade Walls



Shown with (1) Sunshade Wall

Kozy Kanopy

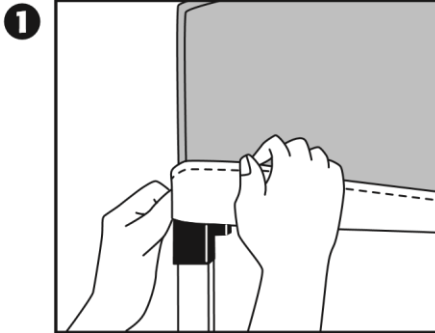
SUNSHADE WALLS INSTRUCTIONS

Designed to be used with our 10' Kozy Kanopy (straight leg) canopy.

INCLUDES: (2) ONE-PIECE SUNSHADE WALLS

SUNSHADE WALLS SET UP

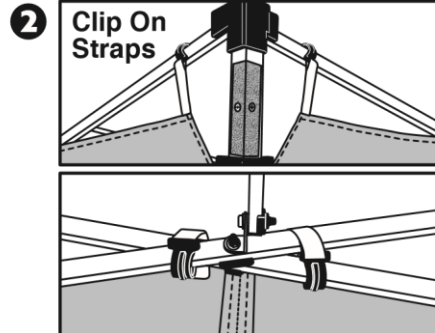
Please read each step before you attempt to set up. Save these instructions for future reference.



Set up your Kanopy in desired area before beginning.

STEP 1: Fold the top Kanopy fabric back halfway up at each corner. • Sunshade walls will fit under the Kanopy fabric around each corner snug against the frame.

Tip: Adjust Kanopy frame height to best suit your needs for attaching the sunshade walls.

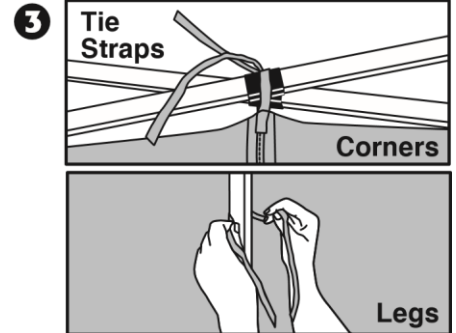


Facing the front of your Kanopy (zippered entrance).

STEP 2: Locate **clip on straps**

- Carefully, walk the sunshade wall around legs to attach **clip on straps** above corner and upper trusses.

Repeat for other sunshade wall.



STEP 3: Secure the sunshade walls by tying all **tie straps** on each corner and legs.

- **INSIDE:** (2) at each corner
- **OUTSIDE:** (1) at each corner *Repeat for other sunshade wall.*

Zip sunshade walls together and pull the Kanopy fabric back down at each corner.

The sunshade walls door can be zippered closed or left open.

INFORMATION

1. The Kanopy is designed as a temporary sun shelter. Do not leave unattended Kanopy up for extended periods.
2. Do not use in any potentially windy or rainy weather. Wind and rain can damage your Kanopy and may also result in injury to you or others. Therefore, do not rely on the Kanopy for protection in heavy or prolonged rain storms.
3. Use caution when handling the Kozy Kanopy frame. Avoid pinching hands or fingers when frame opens or closes.
4. Always stake or weigh down your Kanopy.
5. Handle your Kozy Kanopy sunshade walls with care to avoid rips and tears. Do not store sunshade walls with stakes
6. Do not use Kanopy in a lightning storm

WARNING!

KEEP ALL FLAME AND HEAT SOURCES AWAY FROM THIS TENT FABRIC.
THIS TENT MEETS THE FLAMMABILITY REQUIREMENTS OF CPAI-84. THE FABRIC MAY BURN IF LEFT IN CONTINUOUS CONTACT WITH ANY FLAME SOURCE. THE APPLICATION OF ANY FOREIGN SUBSTANCE TO THE TENT FABRIC MAY RENDER THE FLAME-RESISTANT PROPERTIES INEFFECTIVE.