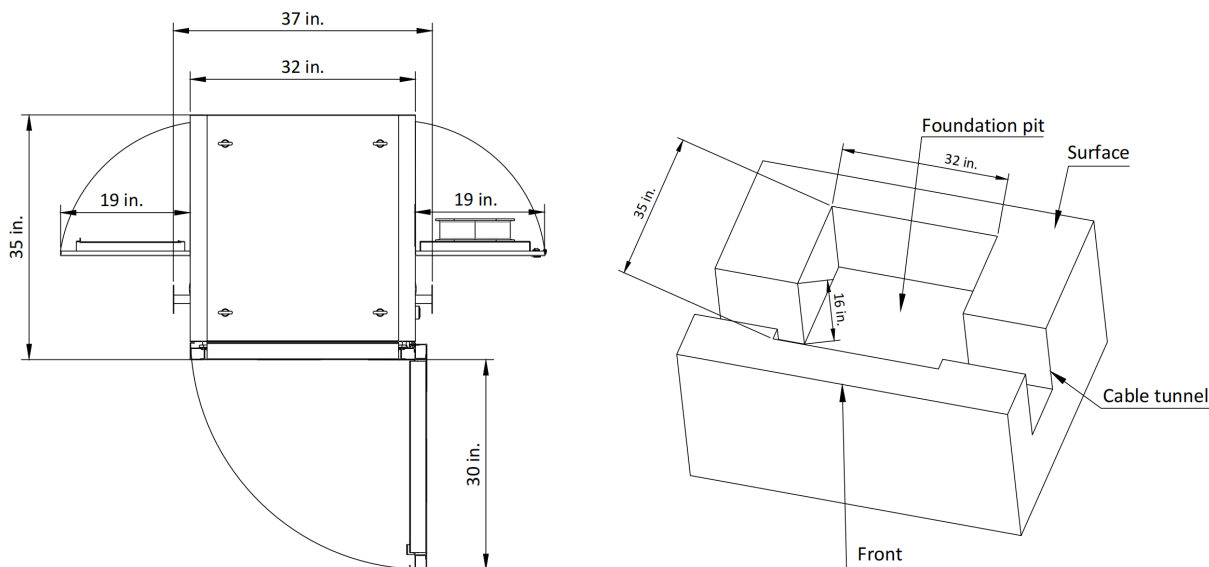
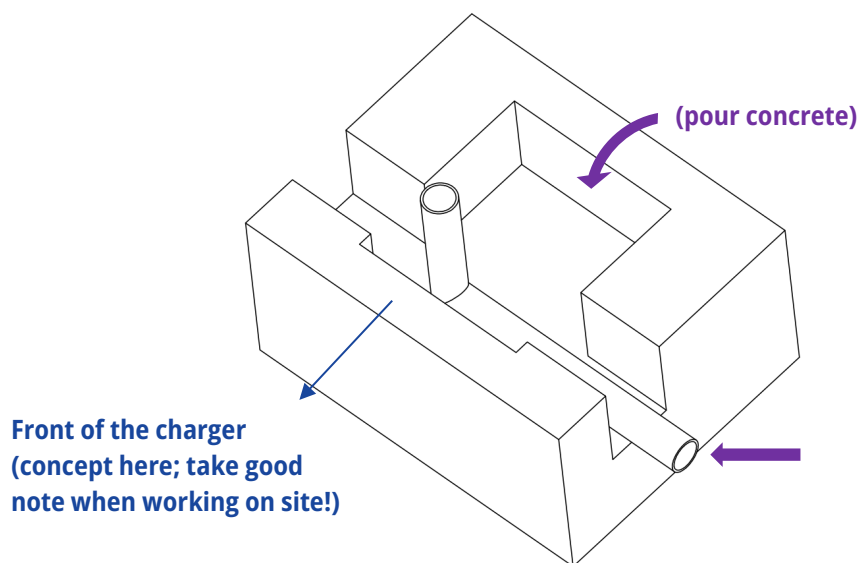


# TCHARGE® UDC 360 DCFC Charger Installation Quick Start Manual

- 1 ➤ Design the site to **leave sufficient space around the charger** (left), then **make a foundation pit** greater than minimum required size (right).



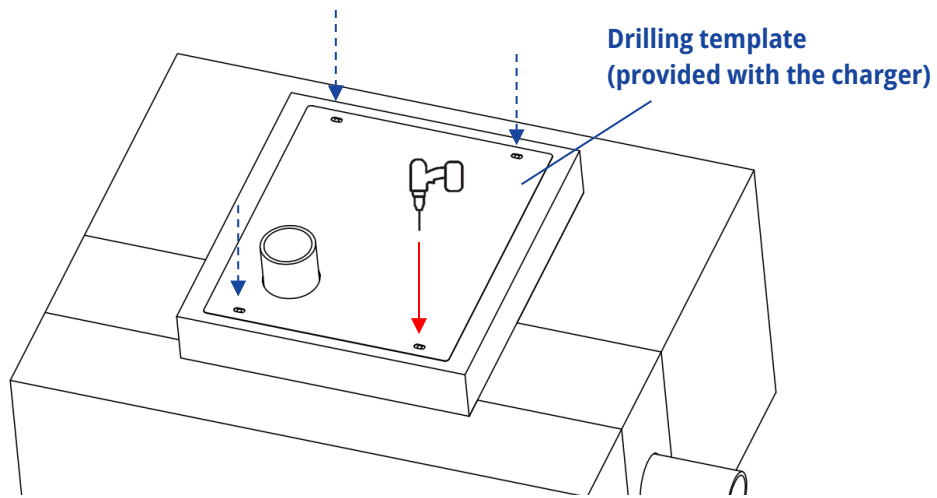
- 2 ➤ Place the conduit into the foundation pit. **Pour concrete** to form the foundation.



## Note

- The image here is for concept only. Please design the foundation and conduit in accordance with local regulations.
- Please pay attention to the direction (facing) of the charger!

- 3 ➤ **Drill screwholes** for expansion tubes on top of foundation for expansion bolts according to hole positions on **drilling template**.

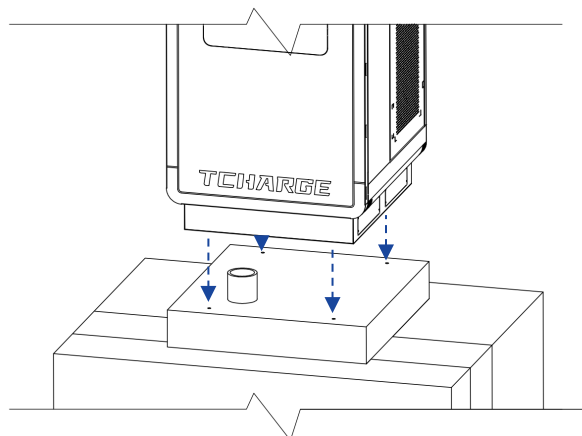
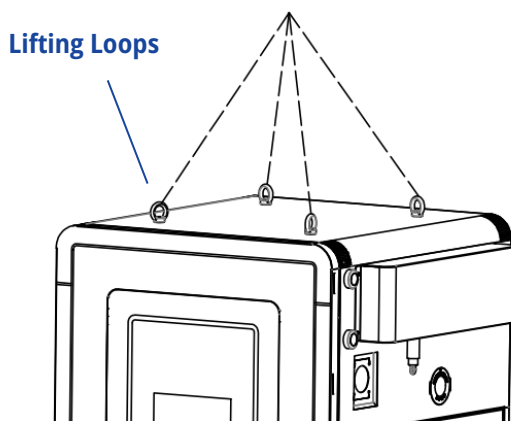


- **Transport** the charger to the site.
- 4 ➤ Install eyebolts on top of the charger to form **lifting loops** (if not shipped in place)
- Use lifting loops to **hoist the charger** and **place it on top of the foundation**. Make sure that the **screw holes on pedestal of the charger align with the holes drilled on top of the foundation**.

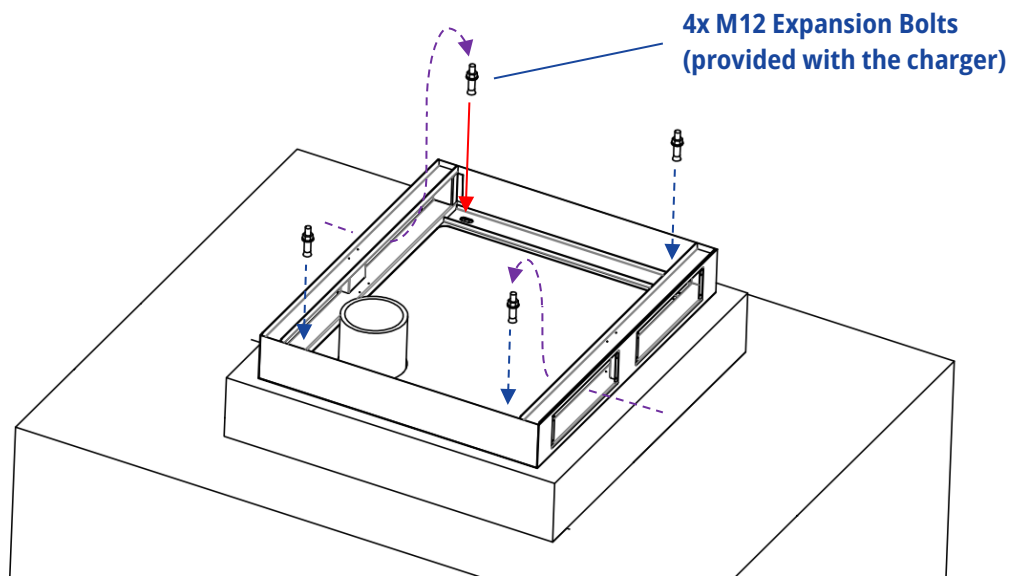


**Caution**

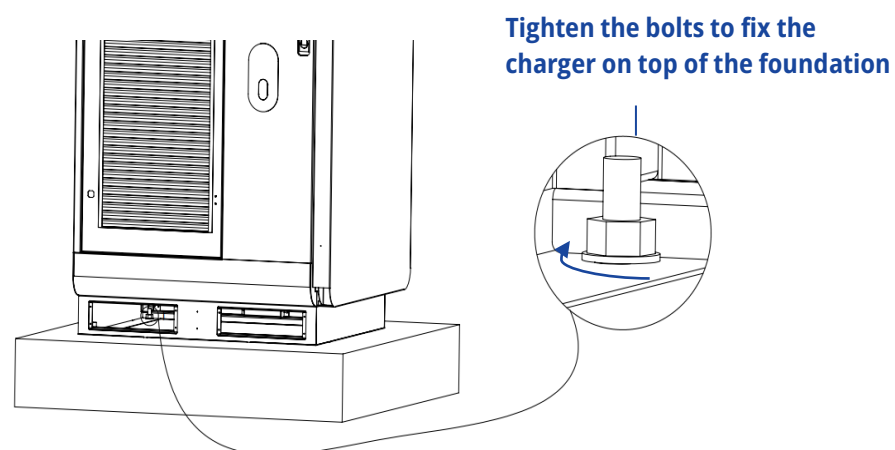
Professional hoisting equipment and personnel are required for conducting hoisting operations on the charger!



- 5 ➤ With the accesses (forklift holes) on sides of the pedestal, put the expansion bolts into the aligned screw holes.



- 6 ➤ Fasten the expansion bolts to **fix the charger on top of the foundation** with the bolts' expansion functionality.



7

- Connect **neutral wire (N)** and **ground wire (GND)** to the terminals on the right.
- Connect **3-phase hotwires (LA, LB & LC)** to molded-case breaker terminals on the left.



**Warning!**

Electricity is dangerous and electrical procedures can be fatal. Operations in this section **should only be carried out by qualified professional electricians** who fully understand the procedures and can ensure on-site safety.

