

COLE COUNTY, MISSOURI CENTERTOWN STORMWATER IMPROVEMENTS

SECTION 25 - TOWNSHIP 45 - RANGE 14 AUGUST 2019

Sheet Index Table	
SHEET NUMBER	SHEET TITLE
1	TITLE SHEET
2	GENERAL NOTES AND QUANTITIES
3	TYPICAL SECTIONS
4	BASE BID PLAN SHEET
5	BASE BID PROFILES
6	STORM SEWER PROFILES
7	DRIVEWAY PROFILES
8	PAVEMENT MARKINGS AND SIGNING
9	ADD ALTERNATE A
10	ADD ALTERNATE B

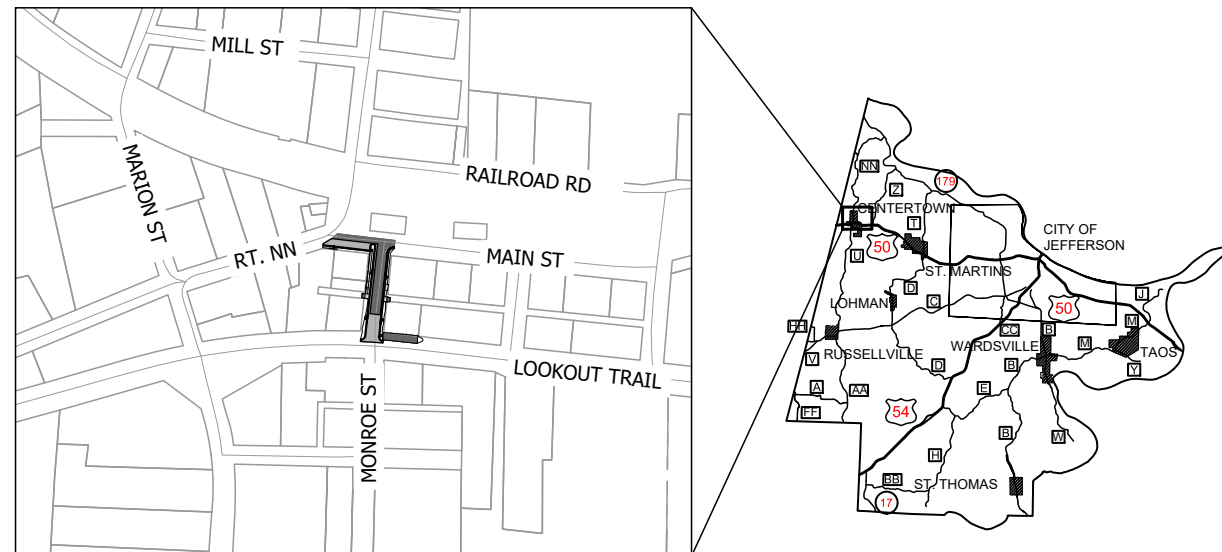
LEGEND

- | | |
|--------------------------------------------------------------------------------------------------------------------------------------------------------------------------------------------------------------------------------------------------------------------------------------------------------------------------------------------------------------------------------------------------------------------------------------------------------------------------------------------------------------------------------------------------------------------------------------------------------------------------------------------------------------------------------------------------------------------------------------------------------------------------------------------------------------------------------------------------------------------------------------------------------------------------------------------------------------------------------------------------------------------------------------------------------------------------------------------------|-----------------------------------------------------------------------------------------------------------------------------------------------------------------------------------------------------------------------------------------------------------------------------------------------------------------------------------------------------------------------------------------------------------------------------------------------------------------------------------------------------------------------------------------------------------------------------------------------------------------|
| <ul style="list-style-type: none"> ⊕ BILLBOARD ⊕ BORE HOLE or DRILL HOLE ⊕ LANDSCAPE BOULDER ⊕ WELL ⊕ FLAG POLE ⊕ SATELLITE DISH ⊕ POST ⊕ MAILBOX ⊕ TWO POLE SIGN ⊕ ONE POLE SIGN ⊕ PARKING METER ⊕ STOP SIGN ⊕ GAS REGULATOR ⊕ GAS RISER ⊕ GAS TEST STATION ⊕ GAS METER ⊕ GAS VALVE ⊕ UTILITY POLE ⊕ GUY POLE ⊕ GUY ANCHOR ⊕ TELEPHONE PEDESTAL ⊕ TELEPHONE MANHOLE ⊕ CABLE TV PEDESTAL ⊕ ELECTRIC MANHOLE ⊕ ELECTRIC METER ⊕ TRANSFORMER/ELECTRIC PAD ⊕ AIR CONDITIONER ⊕ HAND HOLE ⊕ TRAFFIC SIGNAL ⊕ TRAFFIC SIGNAL BOX ⊕ SIGNAL MANHOLE ⊕ STORM MANHOLE ⊕ AREA INLET —OHE— OVERHEAD ELECTRIC —UGT— UNDERGROUND TELEPHONE —UGCT— UNDERGROUND CABLE AND TELEVISION —G— GAS LINE —SAN— SANITARY SEWER LINE —W— WATER LINE | <ul style="list-style-type: none"> ⊕ ROOF DRAIN ⊕ ROOF DRAIN CURB INLET ⊕ SANITARY MANHOLE ⊕ CLEANOUT ⊕ YARD HYDRANT ⊕ WATER SPRINKLER ⊕ WATER MANHOLE ⊕ WATER METER ⊕ WATER VALVE ⊕ FIRE HYDRANT ⊕ LIGHT ⊕ FLOOD LIGHT ⊕ LUMINARY (STREET LIGHT) ⊕ MANHOLE COVER ⊕ MISCELLANEOUS TOPO ITEM ⊕ FINISH FLOOR ⊕ MIN. OPENING ELEV. ⊕ STUMP ⊕ SHRUB ⊕ DECIDUOUS TREE ⊕ EVERGREEN SHRUB ⊕ EVERGREEN TREE |
|--------------------------------------------------------------------------------------------------------------------------------------------------------------------------------------------------------------------------------------------------------------------------------------------------------------------------------------------------------------------------------------------------------------------------------------------------------------------------------------------------------------------------------------------------------------------------------------------------------------------------------------------------------------------------------------------------------------------------------------------------------------------------------------------------------------------------------------------------------------------------------------------------------------------------------------------------------------------------------------------------------------------------------------------------------------------------------------------------|-----------------------------------------------------------------------------------------------------------------------------------------------------------------------------------------------------------------------------------------------------------------------------------------------------------------------------------------------------------------------------------------------------------------------------------------------------------------------------------------------------------------------------------------------------------------------------------------------------------------|

- #### SURVEY MONUMENTATION
- | | |
|-----------------------------------|---------------------------------|
| ⊕ BM | BENCHMARK |
| ⊕ TBM | TEMPORARY BENCHMARK |
| ⊕ R/W MARKER | R/W MARKER |
| ⊕ FOUND SURVEY MONUMENT | FOUND SURVEY MONUMENT |
| ⊕ SET SURVEY MONUMENT | SET SURVEY MONUMENT |
| ⊕ SET SURVEY MONUMENT IN CONCRETE | SET SURVEY MONUMENT IN CONCRETE |
| ⊕ CALCULATED SURVEY POINT | CALCULATED SURVEY POINT |
| ⊕ CHISELED CROSS FOUND | CHISELED CROSS FOUND |
| ⊕ CHISELED CROSS SET | CHISELED CROSS SET |



Project Location Map



CALL OR CLICK 3 DAYS BEFORE YOU DIG!
1-800-DIG-RITE or 811
 MISSOURI ONE-CALL SYSTEM
www.mo1call.com

PRELIMINARY PLANS

APPROVED BY
 COLE COUNTY, MISSOURI

COLE COUNTY PUBLIC WORKS:
 ERIC LANDWEHR, P.E., COUNTY ENGINEER

DATE

Bartlett & West

1719 SOUTHRIDGE DR., SUITE 100 - JEFFERSON CITY, MO 65109-4000
 PHONE 573.634.3181
 MISSOURI CERTIFICATE OF AUTHORITY NO. 000167 - ENGINEERING
 WWW.BARTLETTANDWEST.COM

TITLE SHEET

CENTERTOWN STORMWATER IMPROVEMENTS
 COLE COUNTY, MISSOURI

NOT FOR CONSTRUCTION

SEALED DATE:	
DESIGNED BY:	DCF
DRAWN BY:	EMR
APPROVED BY:	AKJ
DESIGN PROJ.:	19492.005
DATE:	AUGUST 2019
DRAWING NO.:	
SHEET NO.:	1 of 10

GENERAL NOTES:

- A. FOR DETAILS, INCLUDING BUT NOT LIMITED TO, CURB, DRIVEWAYS, INLETS, END SECTIONS, TRENCHING, SANITARY SEWERS, MANHOLES AND CLEAN OUTS, REFER TO CITY OF JEFFERSON STANDARD DETAILS.
- B. VERIFYING THE LOCATIONS OF THE UNDERGROUND UTILITIES, SHOWN OR NOT SHOWN, SHALL BE THE RESPONSIBILITY OF THE CONTRACTOR. ANY DAMAGE TO EXISTING OR PROPOSED FACILITIES, STRUCTURES OR UTILITIES SHALL BE REPAIRED OR REPLACED AT THE CONTRACTOR'S EXPENSE. NOTIFY MISSOURI ONE CALL FOR LOCATION OF THE UTILITIES AT LEAST 5 DAYS PRIOR TO CONSTRUCTION. UTILITY COORDINATION SHALL NOT BE A REASON FOR DELAY OR ADDITIONAL COST FOR THE PROJECT.
- C. THE CONTRACTOR SHALL IMMEDIATELY REPAIR ALL DAMAGE TO PROPERTY OUTSIDE LIMITS OF CONSTRUCTION AT THE CONTRACTOR'S EXPENSE.
- D. REPORT ANY DISCREPANCIES FOUND WITH REGARD TO EXISTING CONDITIONS OR PROPOSED DESIGN IMMEDIATELY TO THE ENGINEER. DO NOT WILLFULLY PROCEED WITH CONSTRUCTION AS DESIGNED WHERE DISCREPANCIES EXIST. THE CONTRACTOR SHALL BE RESPONSIBLE FOR ALL REVISIONS TO THE WORK WHEN NO NOTICE WAS GIVEN TO THE ENGINEER.
- E. THE GENERAL CONTRACTOR SHALL COORDINATE OTHER SITE RELATED OPERATIONS PERFORMED BY OTHER CONTRACTORS OR UTILITY COMPANIES TO ACCOMPLISH THE WORK.
- F. ALL WORK SHALL BE IN COMPLIANCE WITH ALL LOCAL, STATE AND FEDERAL CODES AND ORDINANCES.
- G. LEAVE AREAS OF DEMOLITION IN A NEAT AND SAFE CONDITION AT THE END OF EACH WORK DAY. CONTRACTOR SHALL BARRICADE AREAS OF DEMOLITION AS NECESSARY TO PROTECT THE GENERAL PUBLIC. MAINTAIN SAFE PUBLIC ACCESS TO RESIDENCES.
- H. LEGALLY DISPOSE OF ALL DEMOLITION ITEMS OFF SITE UNLESS NOTED TO RETURN ITEMS TO THE CITY.
- I. ALL UTILITIES NOT MARKED FOR REMOVAL SHALL REMAIN IN PLACE.
- J. ALL TEMPORARY TRAFFIC CONTROL DEVICES SHALL BE INSTALLED PRIOR TO ANY CONSTRUCTION.
- K. ANY EXISTING TRAFFIC SIGNS THAT CONFLICT WITH TEMPORARY TRAFFIC CONTROL SHALL BE COVERED OR REMOVED, NO DIRECT PAY.
- L. CONTRACTOR SHALL STORE AND PROTECT ANY SIGNS THAT MUST BE REMOVED. ANY DAMAGED SIGNS SHALL BE REPLACED BY THE CONTRACTOR AT NO COST TO THE PROJECT.
- M. LOCATION OF TRAFFIC CONTROL DEVICES ARE SUBJECT TO CHANGE AS APPROVED BY ENGINEER.
- N. PLACEMENT AND USE OF TEMPORARY TRAFFIC CONTROL SIGNS AND DEVICES SHALL BE IN ACCORDANCE WITH THE CURRENT VERSION OF THE MUTCD.
- O. LOCAL ACCESS FOR PROPERTY OWNERS SHALL BE MAINTAINED AT ALL TIMES. THIS CAN BE ACCOMPLISHED THROUGH THE USE OF TEMPORARY PAVEMENT, GRAVEL SURFACE OR ANY OTHER MEANS APPROVED BY THE ENGINEER.
- P. ALL PAVEMENT REMOVAL ADJACENT TO PAVEMENT REMAINING IN PLACE SHALL BE ISOLATED BY FULL DEPTH SAW CUTS PRIOR TO REMOVAL. ANY DAMAGE BEYOND THE INTENDED REMOVAL LIMITS SHALL BE REPLACED OR REPAIRED BY THE CONTRACTOR AT NO DIRECT PAY.
- Q. ALL COORDINATES LISTED FOR THE CURB INLETS ARE LOCATED AT THE CENTER OF THE INLETS, ALL MANHOLE LOCATES ARE TO THE CENTER OF THE STRUCTURE AND ALL END SECTION LOCATES ARE TO THE CENTER OF THE END OF THE PIPE.
- R. ALL STORMWATER INLETS SHALL BE POURED IN PLACE. NO PRECAST INLETS WILL BE ALLOWED.
- S. TREES AND LANDSCAPING NOT SPECIFIED TO BE REMOVED SHALL BE PROTECTED AS NECESSARY.

ESTIMATED QUANTITIES

Item No.	Description	Quantity	Unit
Base Bid			
1	Mobilization	1	LS
2	Construction Signage/Traffic Control	1	LS
3	Removal of Improvements	1	LS
4	Earthwork	1	LS
5	3" Aggregate Stone Base	775	SY
6	Gravel (A) or Crushed Stone (B) for Residential Gravel Driveway	205	SY
7	Bituminous Pavement - 5.5" Base	608	SY
8	Bituminous Pavement - 1.5" Surface	515	SY
9	Concrete Pavement - 4.5" Base	93	SY
10	Concrete Sidewalk, 4 in.	76	SY
11	Concrete Sidewalk Ramp, 6 in.	12	SY
12	Truncated Domes	10	SF
13	6" PCC Residential Concrete Drive	11	SY
14	6" PCC Residential Concrete Drive Approach	5	SY
15	Type A Curb and Gutter	475	LF
16	15" Class III Reinforced Concrete Pipe Culvert	220	LF
17	18" Class III Reinforced Concrete Pipe Culvert	41	LF
18	24" Class III Reinforced Concrete Pipe Culvert	152	LF
19	Precast Concrete Manhole - 60 in.	1	EA
20	Type A Concrete Curb Inlet 4' x 3'	1	EA
21	Type A Concrete Curb Inlet 4' x 4'	1	EA
22	Type A Concrete Curb Inlet 5' x 4'	2	EA
23	15" Precast Concrete Flared End Section	1	EA
24	24" Precast Concrete Flared End Section	2	EA
25	Pavement Markings	1	LS
26	Permanent Signage	1	LS
27	Seeding, Fertilizing and Mulch	0.3	AC
28	Inlet Check	4	EA
Add Alternate A			
29	15" Class III Reinforced Concrete Pipe Culvert	(10)	LF
30	15" Precast Concrete Flared End Section	(1)	EA
31	3" Aggregate Stone Base	130	SY
32	Gravel (A) or Crushed Stone (B) for Residential Gravel Driveway	10	SY
33	Bituminous Pavement - 1.5" Surface	42	SY
34	Concrete Pavement - 4.5" Base	42	SY
35	6" PCC Residential Concrete Drive	16	SY
36	6" PCC Residential Concrete Drive Approach	10	SY
37	Type A Curb and Gutter	183	LF
38	15" Class III Reinforced Concrete Pipe Culvert	108	LF
39	4" Trench Drain	15	LF
40	4" Nonperforated Edge Drain	82	LF
41	Type A Concrete Curb Inlet 4' x 3'	1	EA
Add Alternate B			
42	1.5" Asphalt Mill	803	SY
43	Bituminous Pavement - 1.5" Surface	803	SY

Bartlett & West

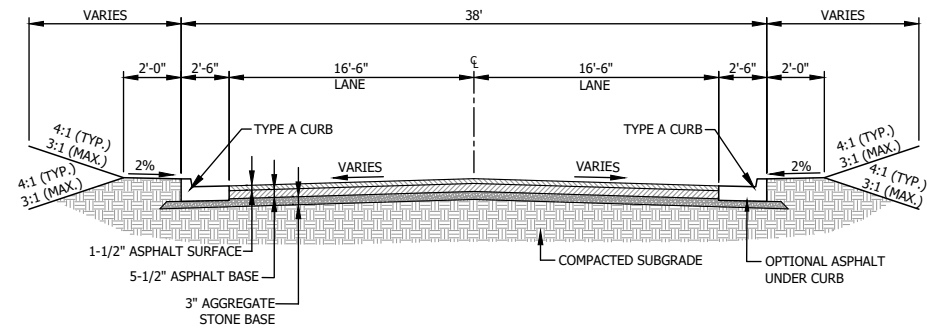
1719 SOUTHRIDGE DR., SUITE 100 - JEFFERSON CITY, MO 64509-0000
PHONE 573.634.3181
MISSOURI CERTIFICATE OF AUTHORITY NO. 000167 - ENGINEERING
www.bartlettwest.com

GENERAL NOTES AND QUANTITIES

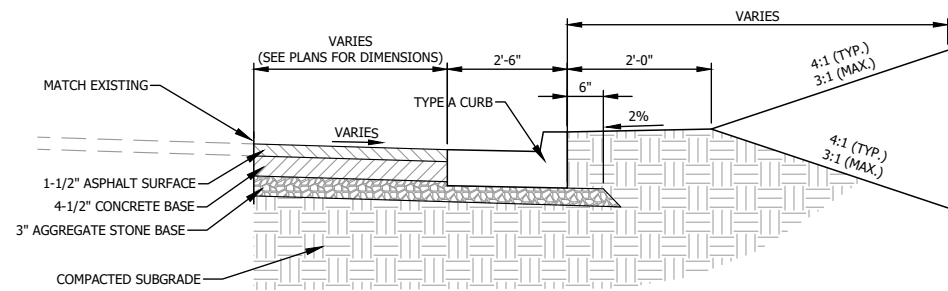
CENTERTOWN STORMWATER IMPROVEMENTS
COLE COUNTY, MISSOURI

NOT FOR CONSTRUCTION

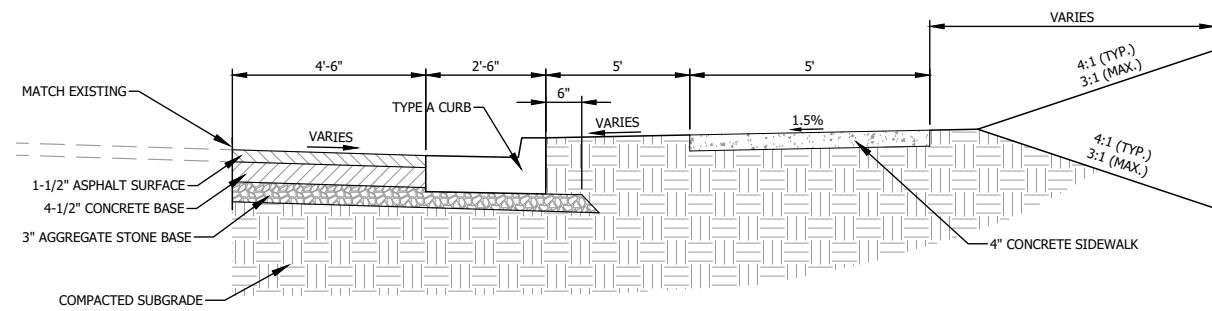
SEALED DATE:	
DESIGNED BY:	DCF
DRAWN BY:	EMR
APPROVED BY:	AKJ
DESIGN PROJ:	19492.005
DATE:	AUGUST 2019
DRAWING NO:	
SHEET NO:	2 of 10



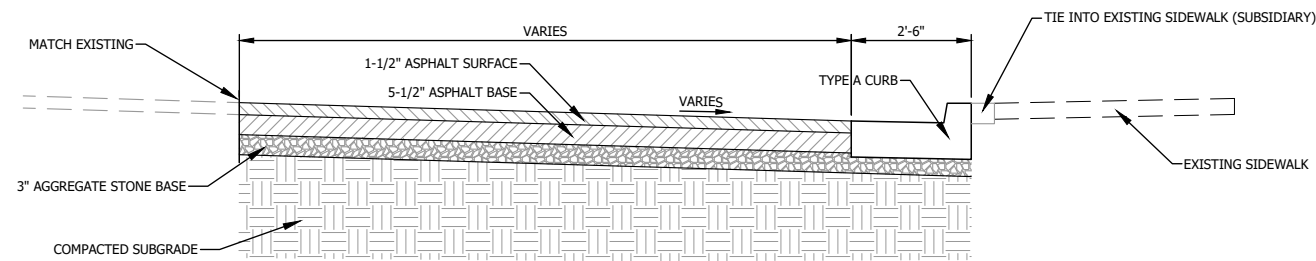
TYPICAL SECTION FULL DEPTH REPLACEMENT - MONROE STREET



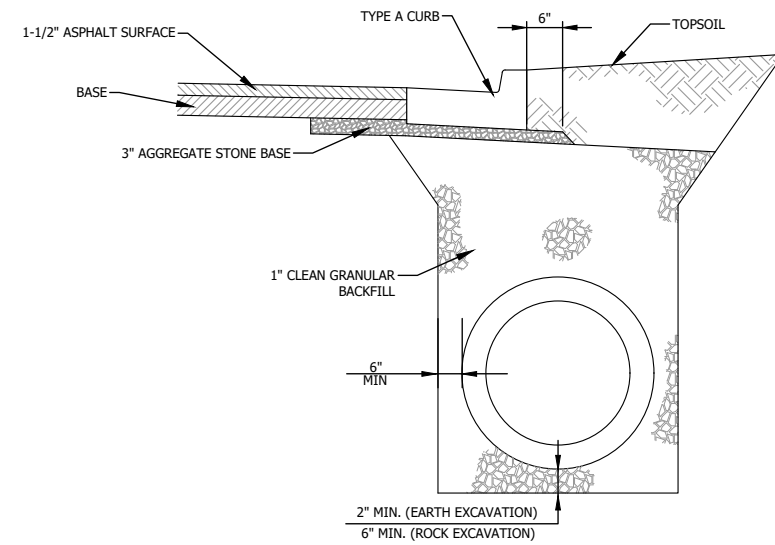
TYPICAL CURB REPLACEMENT - MONROE STREET



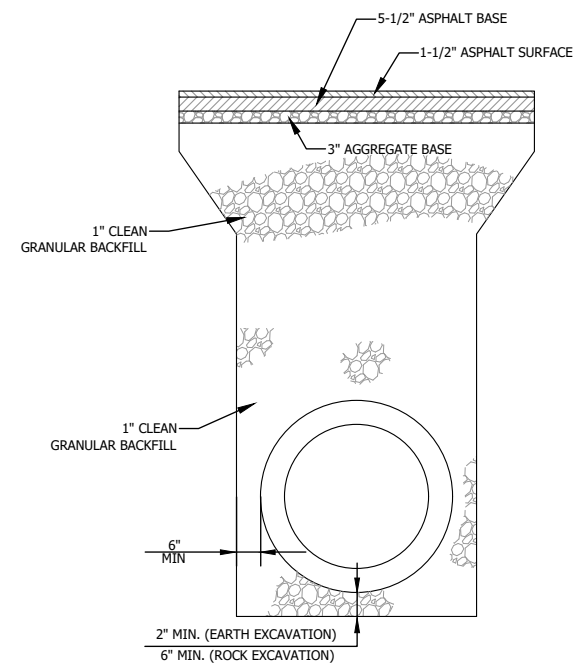
TYPICAL CURB REPLACEMENT (WITH SIDEWALK) - MONROE STREET



TYPICAL CURB REPLACEMENT - MAIN STREET



TRENCH DETAIL FOR CURB LINE



TRENCH DETAIL FOR ROAD CROSSING

Bartlett & West
 1719 SOUTHRIDGE DR., SUITE 100 - JEFFERSON CITY, MO 65109.4000
 PHONE 573.634.3181
 MISSOURI CERTIFICATE OF AUTHORITY NO. 000167 - ENGINEERING
 www.bartlettandwest.com

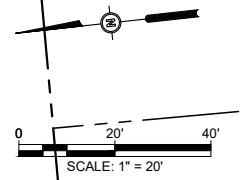
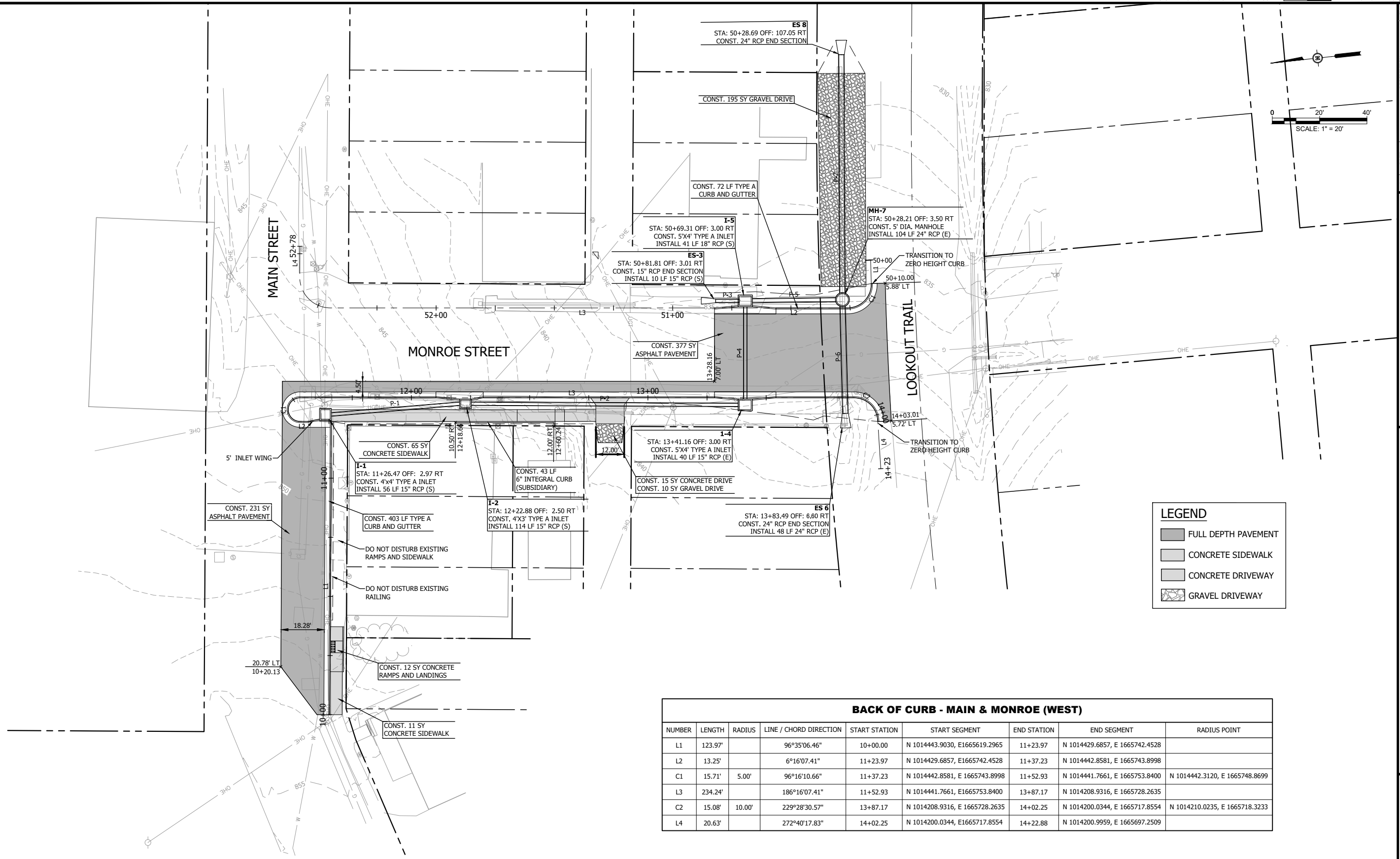
TYPICAL SECTIONS
 CENTERTOWN STORMWATER IMPROVEMENTS
 COLE COUNTY, MISSOURI

NOT FOR CONSTRUCTION

SEALED DATE:	
DESIGNED BY:	DCF
DRAWN BY:	EMR
APPROVED BY:	AKJ
DESIGN PROJ.:	19492.005
DATE:	AUGUST 2019
DRAWING NO.:	
SHEET NO.:	3 of 10

Drawing Name: V:\Proj\19492\19492.005\SubCurb\Plan Set\19492.005-C-CenNotes_TypicalSections.dwg Layout Name: TYPICAL SECTIONS Plotted By: DCF01439 Plotted on: 8/6/2019 2:10:33 PM
 Last edit on: Aug 6, 2019 by: DCF01439

Last edit on: Aug 6, 2019 by: DCFD1489 Drawing Name: W:\Proj\19000\19492\19492.005\Sub\CD\Plan Set\19492.005-C-Plan_Profile.dwg Layout Name: Plan Plotted By: DCFD1489 Plotted on: 8/6/2019 2:10:49 PM



LEGEND

- FULL DEPTH PAVEMENT
- CONCRETE SIDEWALK
- CONCRETE DRIVEWAY
- GRAVEL DRIVEWAY

BACK OF CURB - MAIN & MONROE (WEST)

NUMBER	LENGTH	RADIUS	LINE / CHORD DIRECTION	START STATION	START SEGMENT	END STATION	END SEGMENT	RADIUS POINT
L1	123.97'		96°35'06.46"	10+00.00	N 1014443.9030, E1665619.2965	11+23.97	N 1014429.6857, E 1665742.4528	
L2	13.25'		6°16'07.41"	11+23.97	N 1014429.6857, E1665742.4528	11+37.23	N 1014442.8581, E 1665743.8998	
C1	15.71'	5.00'	96°16'10.66"	11+37.23	N 1014442.8581, E 1665743.8998	11+52.93	N 1014441.7661, E 1665753.8400	N 1014442.3120, E 1665748.8699
L3	234.24'		186°16'07.41"	11+52.93	N 1014441.7661, E1665753.8400	13+87.17	N 1014208.9316, E 1665728.2635	
C2	15.08'	10.00'	229°28'30.57"	13+87.17	N 1014208.9316, E 1665728.2635	14+02.25	N 1014200.0344, E 1665717.8554	N 1014210.0235, E 1665718.3233
L4	20.63'		272°40'17.83"	14+02.25	N 1014200.0344, E1665717.8554	14+22.88	N 1014200.9959, E 1665697.2509	

BACK OF CURB - MONROE (EAST)

NUMBER	LENGTH	RADIUS	LINE / CHORD DIRECTION	START STATION	START SEGMENT	END STATION	END SEGMENT	RADIUS POINT
L1	10.00'		274°32'01.97"	50+00.00	N 1014195.6338, E1665785.4516	50+10.00	N 1014196.4243, E 1665775.4829	
C1	16.01'	10.00'	320°24'04.69"	50+10.00	N 1014196.4243, E 1665775.4829	50+26.01	N 1014207.4849, E 1665766.3331	N 1014206.3930, E 1665776.2733
L2	56.29'		6°16'07.41"	50+26.01	N 1014207.4849, E1665766.3331	50+82.31	N 1014263.4427, E 1665772.4800	

DESCRIPTION

#	
DATE	

1719 SOUTHRIDGE DR., SUITE 100 - JEFFERSON CITY, MO 65109.4000
PHONE 573.634.3181
MISSOURI CERTIFICATE OF AUTHORITY NO. 000167 - ENGINEERING
www.bartlettwest.com

BASE BID PLAN SHEET

CENTERTOWN STORMWATER IMPROVEMENTS
COLE COUNTY, MISSOURI

NOT FOR CONSTRUCTION

SEALED DATE: _____

DESIGNED BY: DCF

DRAWN BY: EMR

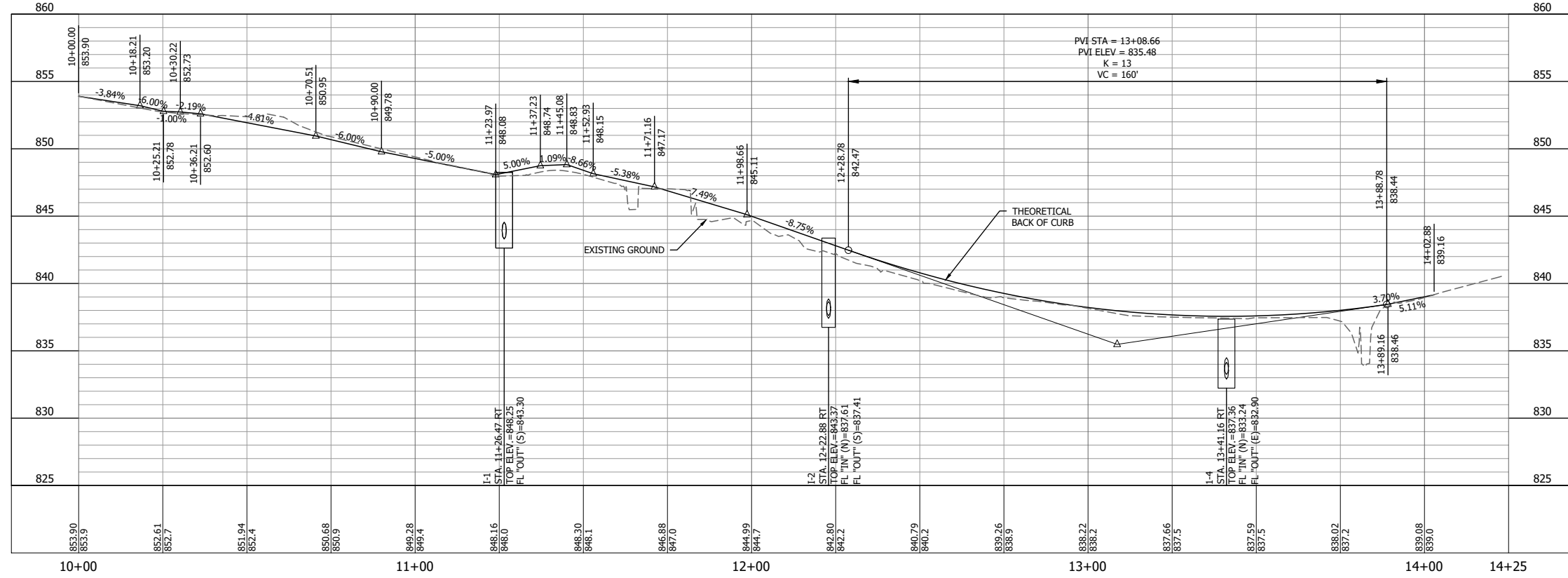
APPROVED BY: AKJ

DESIGN PROJ: 19492.005

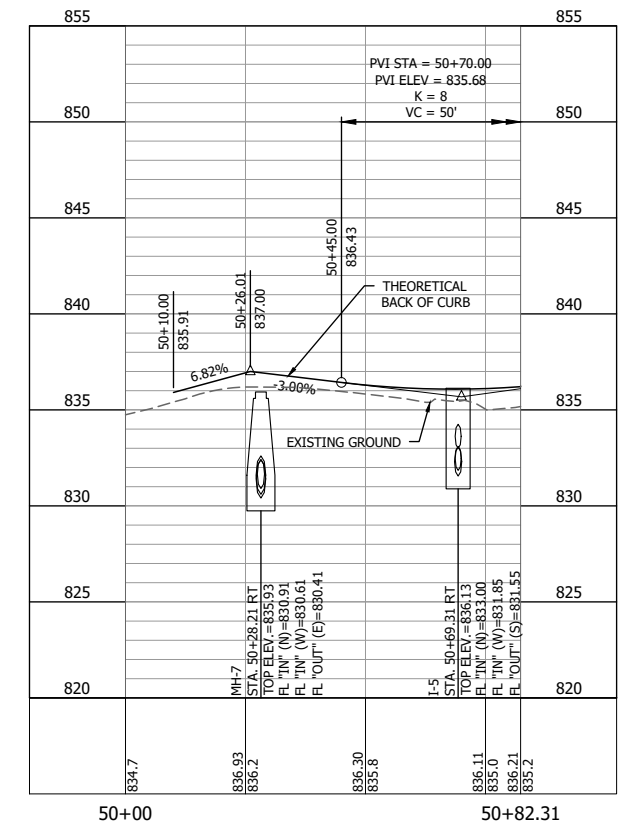
DATE: AUGUST 2019

DRAWING NO: _____

SHEET NO: 4 of 10



THEORETICAL BACK OF CURB - MAIN STREET AND MONROE STREET (WEST)



THEORETICAL BACK OF CURB - MONROE STREET (EAST)

#	DATE	DESCRIPTION

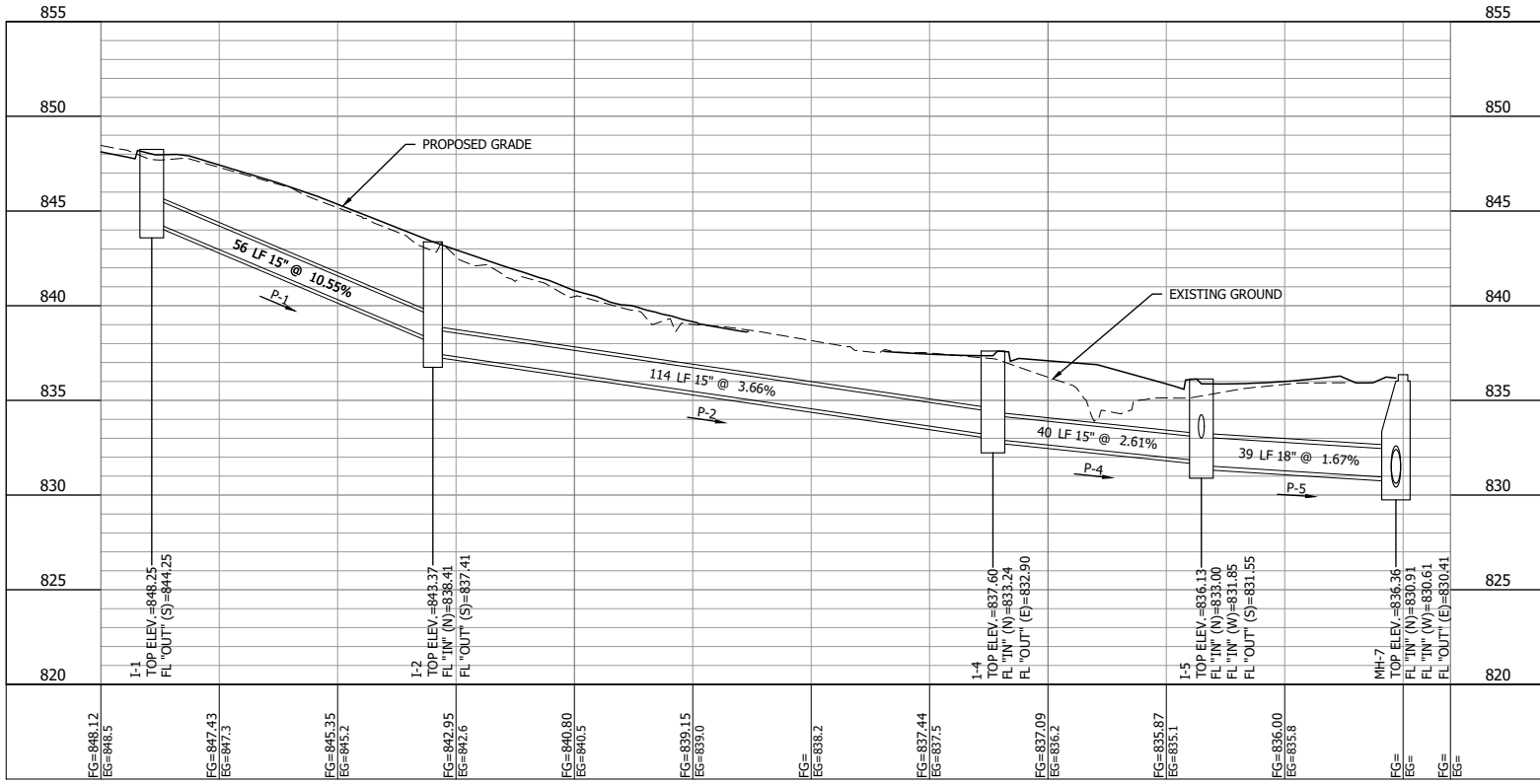
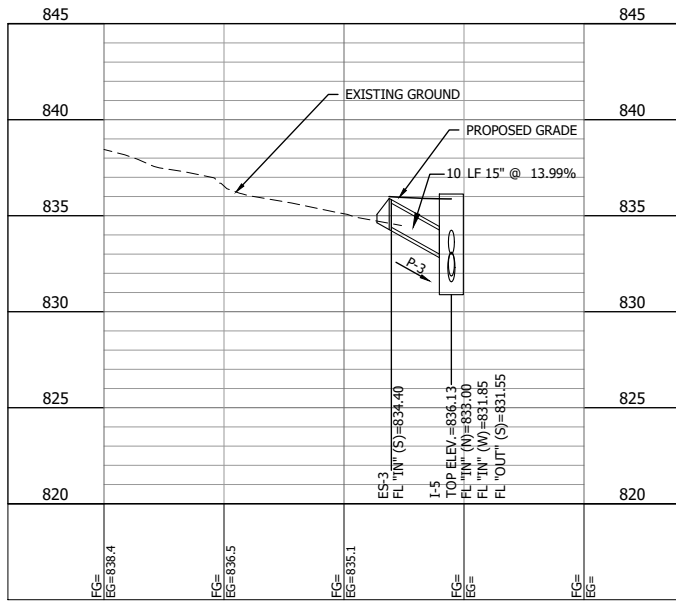
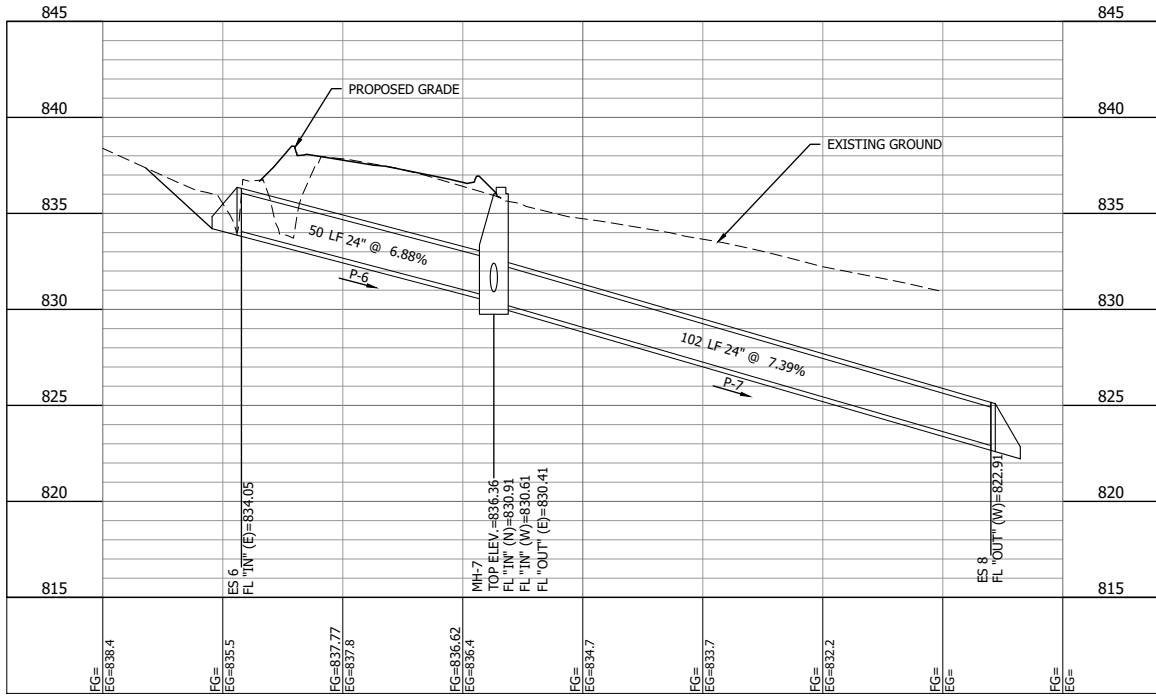


BASE BID PROFILES
CENTERTOWN STORMWATER IMPROVEMENTS
COLE COUNTY, MISSOURI

NOT FOR CONSTRUCTION

SEALED DATE:	
DESIGNED BY:	DCF
DRAWN BY:	EMR
APPROVED BY:	AKJ
DESIGN PROJ.:	19492.005
DATE:	AUGUST 2019
DRAWING NO.:	
SHEET NO.:	5 of 10

Last edit: on: Aug. 5, 2019 by: DCF01439 Drawing Name: W:\Proj\190000\19492.005\AutoCad\Plan Set\19492.005-C-StormSewer_Profile.dwg Layout Name: Storm 1 Plotted By: DCF01439 plotted on: 8/6/2019 2:11:29 PM



NOT FOR CONSTRUCTION

SEALED DATE:
 DESIGNED BY: DCF
 DRAWN BY: EMR
 APPROVED BY: AKJ
 DESIGN PROJ: 19492.005
 DATE: AUGUST 2019
 DRAWING NO:
 SHEET NO: 6 of 10

STORM SEWER PROFILES

CENTERTOWN STORMWATER IMPROVEMENTS COLE COUNTY, MISSOURI

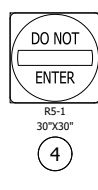
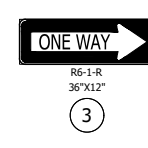
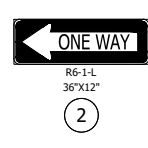
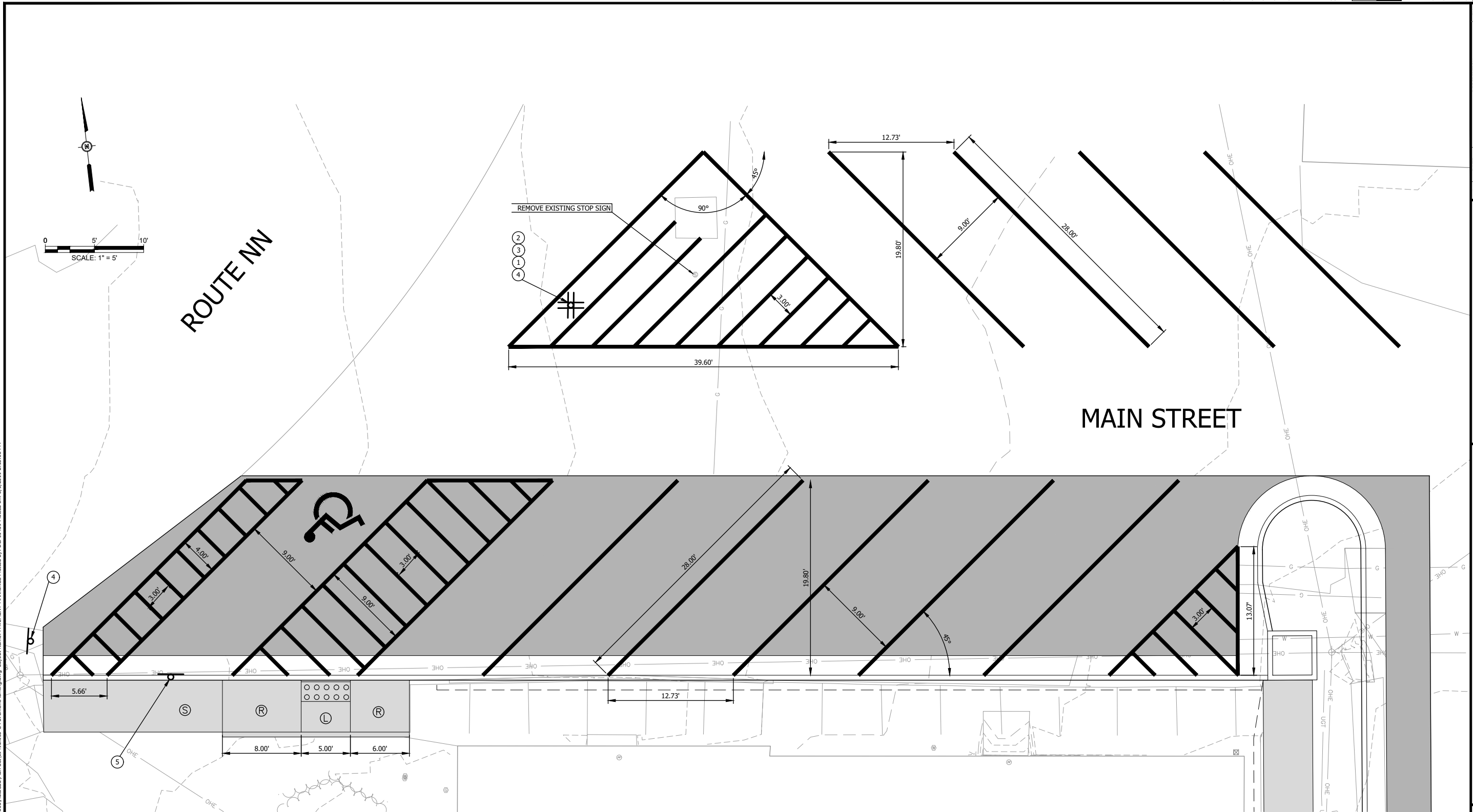
Bartlett & West

1719 SOUTHBRIDGE DR., SUITE 100 - JEFFERSON CITY, MO 65108-4000
 PHONE 573.634.3181
 MISSOURI CERTIFICATE OF AUTHORITY NO. 00000000000000000000000000000000
 www.bartlettwest.com

#	DATE	DESCRIPTION

ALL RIGHTS RESERVED. ALL BARTLETT & WEST PLANS, SPECIFICATIONS AND DRAWINGS ARE PROTECTED UNDER COPYRIGHT LAW AND NO PART MAY BE COPIED, REPRODUCED, DISPLAYED PUBLICLY, USED TO CREATE DERIVATIVES, DISTRIBUTED STORED BY A RETRIEVAL SYSTEM OR TRANSMITTED IN ANY FORM BY ANY MEANS WITHOUT PRIOR WRITTEN PERMISSION OF BARTLETT & WEST.

Last edit on: Aug 5, 2019 by: DCFD1439 Drawing Name: W:\Proj\19000\19492\19492.005\SubCrd\Plan Set\19492.005-C-PavementMarking.dwg Layout Name: PAVEMENT MARKINGS Plotted By: DCFD1439 Plotted on: 8/6/2019 2:13:08 PM



MUTCD CODE	DESCRIPTION	SIZE	QTY (EA)
1	R1-1 STOP	30" x 30"	1
2	R6-1-L ONE WAY (LEFT)	36" x 12"	1
3	R6-1-R ONE WAY (RIGHT)	36" x 12"	1
4	R5-1 DO NOT ENTER	30" x 30"	2
5	R7-8a HANDICAP PARKING	12" x 18"	1

NOTE:
ALL CONFLICTING PAVEMENT MARKINGS SHALL BE REMOVED BY THE CONTRACTOR AT NO DIRECT PAY

#	DATE	DESCRIPTION

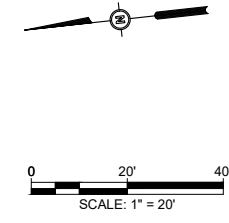
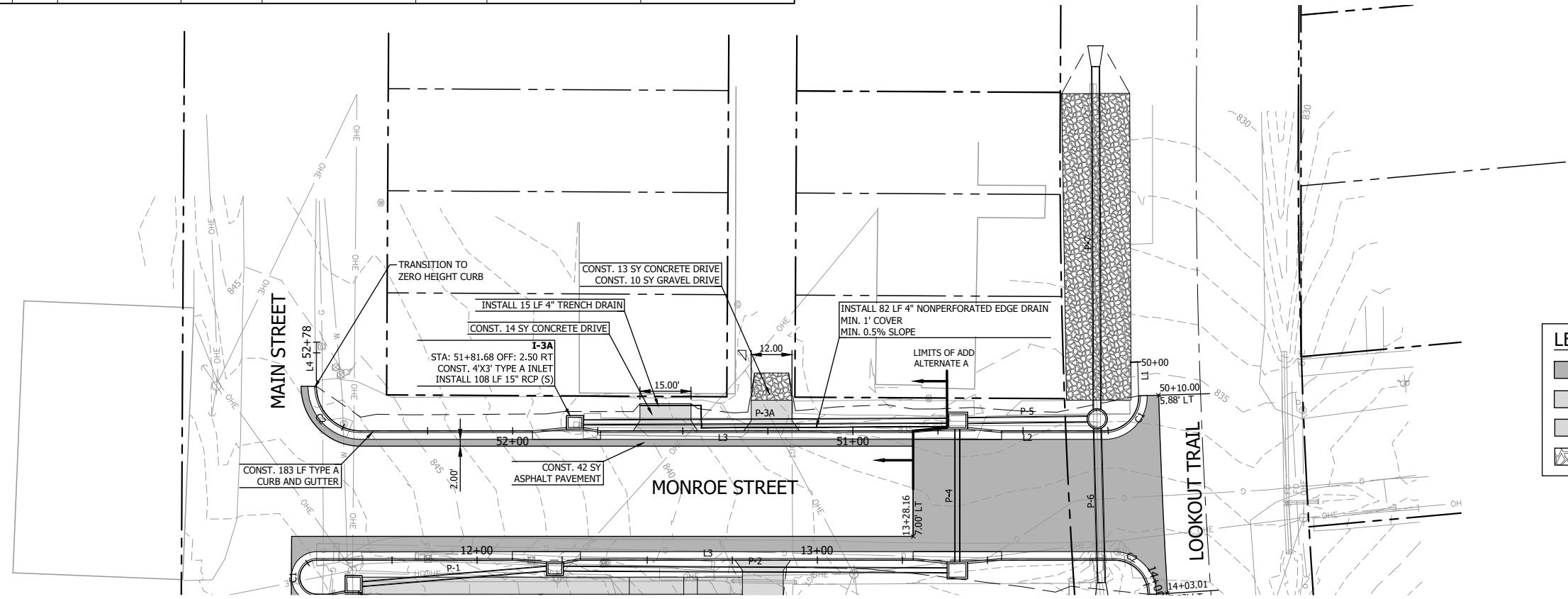
Bartlett & West
 1719 SOUTHRIDGE DR., SUITE 100 - JEFFERSON CITY, MO 65109-4000
 PHONE 573.634.3181
 MISSOURI CERTIFICATE OF AUTHORITY NO. 000167 - ENGINEERING
 WWW.BARTLETTANDWEST.COM

PAVEMENT MARKINGS AND SIGNING
 CENTERTOWN STORMWATER IMPROVEMENTS
 COLE COUNTY, MISSOURI

NOT FOR CONSTRUCTION

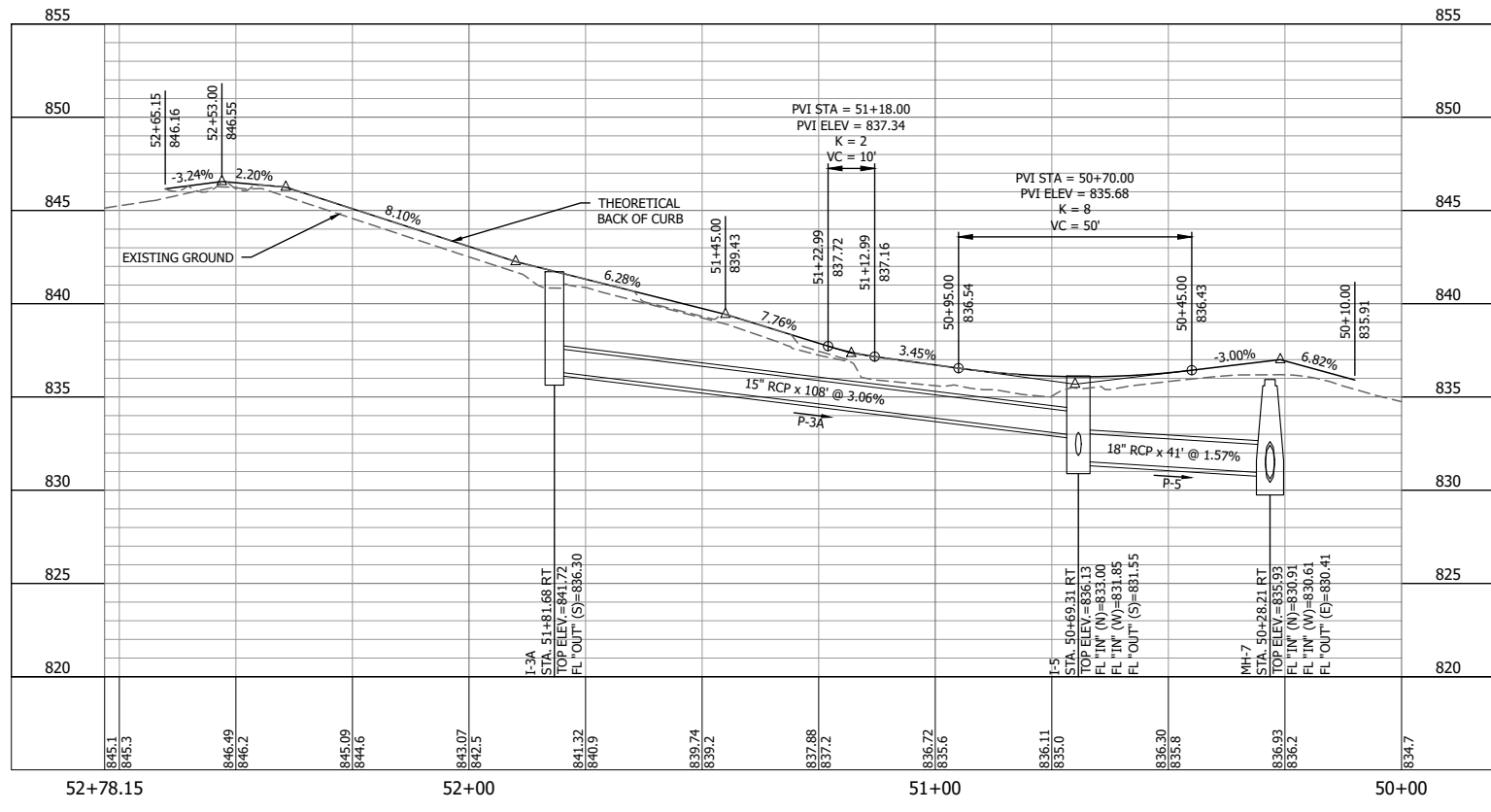
SEALED DATE: _____
 DESIGNED BY: DCF
 DRAWN BY: EMR
 APPROVED BY: AKJ
 DESIGN PROJ: 19492.005
 DATE: AUGUST 2019
 DRAWING NO: _____
 SHEET NO: 8 of 10

BACK OF CURB - MONROE (EAST)								
NUMBER	LENGTH	RADIUS	LINE / CHORD DIRECTION	START STATION	START SEGMENT	END STATION	END SEGMENT	RADIUS POINT
L3	162.35'		6°16'07.41"	50+82.31	N 1014263.4427, E1665772.4800	52+44.66	N 1014424.8236, E 1665790.2075	
C2	20.49'	13.00'	51°25'36.48"	52+44.66	N 1014424.8236, E 1665790.2075	52+65.15	N 1014436.3183, E 1665804.6205	N 1014423.4041, E 1665803.1297
L4	13.00'		96°35'05.55"	52+65.15	N 1014436.3183, E1665804.6205	52+78.15	N 1014434.8276, E 1665817.5348	



LEGEND

	FULL DEPTH PAVEMENT
	CONCRETE SIDEWALK
	CONCRETE DRIVEWAY
	GRAVEL DRIVEWAY



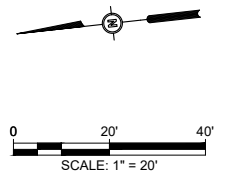
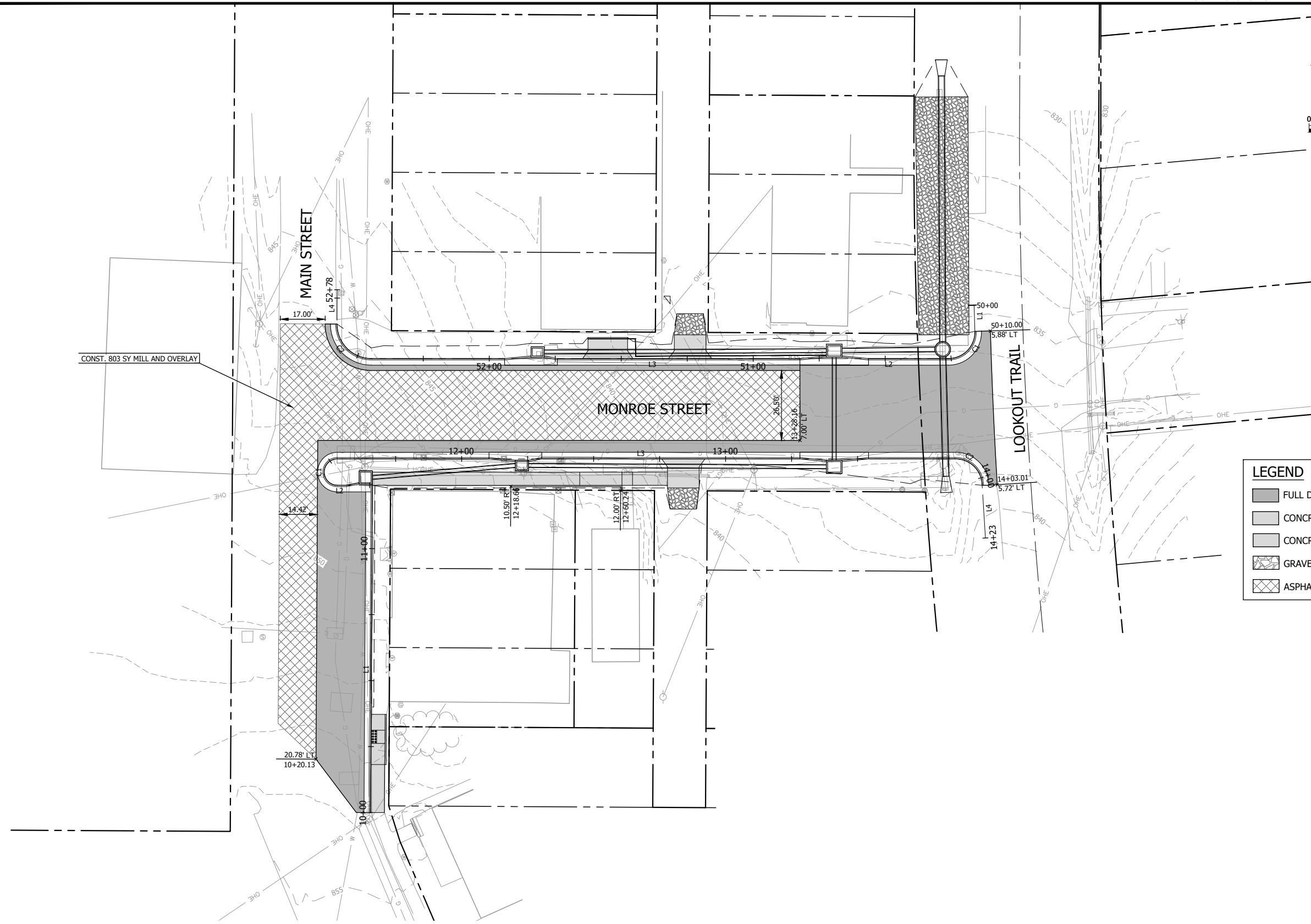
Last edit on: Aug 6, 2019 by: DCFD1489 Drawing Name: W:\Proj\19000\19492\19492.005\SubCul\Plan Set\19492.005-C.Plan_Profile.dwg Layout Name: Add Alternate A Plotted By: DCFD1489 Plotted on: 8/6/2019 2:13:26 PM

Bartlett & West
 1719 SOUTHBRIDGE DR., SUITE 100 - JEFFERSON CITY, MO 65109.4009
 PHONE 573.634.3181
 MISSOURI CERTIFICATE OF AUTHORITY NO. 000167 - ENGINEERING
 www.bartlettandwest.com

ADD ALTERNATE A
 CENTERTOWN STORMWATER IMPROVEMENTS
 COLE COUNTY, MISSOURI

NOT FOR CONSTRUCTION

SEALED DATE:	
DESIGNED BY:	DCF
DRAWN BY:	EMR
APPROVED BY:	AJK
DESIGN PROJ:	19492.005
DATE:	AUGUST 2019
DRAWING NO:	
SHEET NO:	9 of 10



LEGEND

	FULL DEPTH PAVEMENT
	CONCRETE SIDEWALK
	CONCRETE DRIVEWAY
	GRAVEL DRIVEWAY
	ASPHALT MILLING

Last edit on: Aug 6, 2019 by: DCFD1439 Drawing Name: W:\Proj\19000\19492\19492.005\SubCadd\Plan Set\19492.005-C.Plan_Profile.dwg Layout Name: Add Alternate B Plotted By: DCFD1439 Plotted on: 8/6/2019 2:13:30 PM

#	DATE	DESCRIPTION

Bartlett & West
 1719 SOUTHRIDGE DR., SUITE 100 - JEFFERSON CITY, MO 65109-4000
 PHONE 573.634.3181
 MISSOURI CERTIFICATE OF AUTHORITY NO. 000167 - ENGINEERING
 WWW.BARTLETTANDWEST.COM

ADD ALTERNATE B
CENTERTOWN STORMWATER IMPROVEMENTS
COLE COUNTY, MISSOURI

NOT FOR CONSTRUCTION

SEALED DATE:	
DESIGNED BY:	DCF
DRAWN BY:	EMR
APPROVED BY:	AKJ
DESIGN PROJ:	19492.005
DATE:	AUGUST 2019
DRAWING NO:	
SHEET NO:	10 of 10

ALL RIGHTS RESERVED. ALL BARTLETT & WEST PLANS, SPECIFICATIONS AND DRAWINGS ARE PROTECTED UNDER COPYRIGHT LAW, AND NO PART MAY BE COPIED, REPRODUCED, DISTRIBUTED PUBLICLY, USED TO CREATE DERIVATIVES, DISTRIBUTED, STORED IN A RETRIEVAL SYSTEM OR TRANSMITTED IN ANY FORM BY ANY MEANS WITHOUT PRIOR WRITTEN PERMISSION OF BARTLETT & WEST.