

# EURISKO DESIGN

2018  
COLLECTION

WWW.EURISKODESIGN.COM  
985.705.0937

## Contents

|                                          |    |         |
|------------------------------------------|----|---------|
| Retail                                   | pg | 3 - 16  |
| Retail Benches                           | pg | 17 - 18 |
| Desks                                    | pg | 19 - 21 |
| Color Department                         | pg | 22 - 24 |
| Styling Stations                         | pg | 25 - 36 |
| Mirrors                                  | pg | 37 - 40 |
| Stylers                                  | pg | 41 - 44 |
| Styling Product Cart/<br>Computer Lookup | pg | 45      |
| Manicure / Pedicure                      | pg | 46      |
| Makeup / Express Service Bar             | pg | 47 - 48 |
| Shampoo / Spa Cabinetry                  | pg | 49      |
| Chair & Bowl Catalog                     | pg | 50 - 71 |

## Color Samples

## Philosophy

When you begin to design furniture without preconceptions, the result can be startling, beautiful, brilliant and sustainable.

This is the power of enlightened design. A clarity of vision that completely rewrites the definition of form and function and personifies the epitome of art expressed in the form of furniture.

Eurisko understands that design is the #1 determinant that emotionally affects a specific environment and as a result, creates the desired mood for the consumer.

### Laminates



Gazelle Wood



Ebony



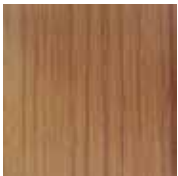
Classic Walnut



Dark Wenge



Light Brown Ebony



Hot Karma Oak



Baritone Zebra



Athens Cherry



Peach Hart



Brown Cedar



Oak



Acheivements



Iron Woven



Mahogany Plank



Classical Oak



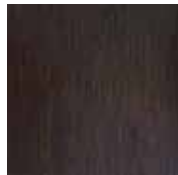
Maple



Nobel Cherry



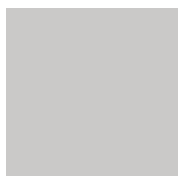
Classic Euroline



Wenge Arrow



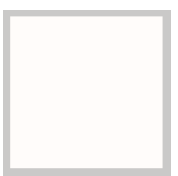
Tahiti Wood



Grey Laminate



Black Lacquered or Laminate



White Lacquered or Laminate



Ginger Spice Lacquered

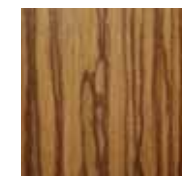
### Wood Veneer



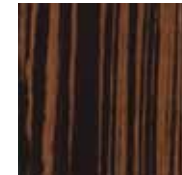
Wenge



Cocoa on Willow



Zebrawood Clear



Black Ebony



Bamboo Dark

## Chelsea Window Display

Features  
Glass on Risers  
LED Illuminated **Option**  
Lacquered or Wood Veneer Finish

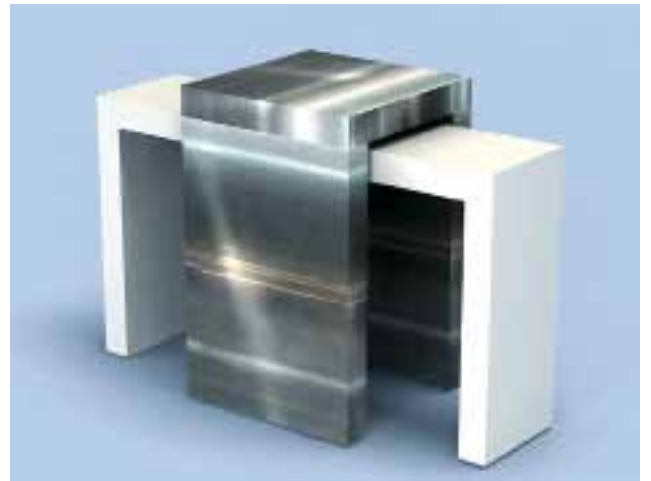
48" W x 12" D x 29" H  
EUV-CH-01/02



## South Beach Window Display

Features  
Two Piece Display  
Stainless, Lacquered or  
Wood Veneer Finish

20" W x 20" H x 32" H Tall  
48" W x 12" D x 28" H Long  
EUV-SB-01



## Kew Towers

Features  
Frosted Glass Top on Risers  
Illuminated **Option**  
Group of Three  
Lacquered or Wood Veneer Finish

24" W x 16" D x 34" H  
16" W x 16" D x 40" H  
16" W x 16" D x 46" H  
EUV-KT-01/02



## Launch Promotion

Features  
Acrylic, Lacquered or  
Wood Veneer Tops  
Power Coated Steel Base  
Group of Three

24" W x 16" D x 34" H  
16" W x 16" D x 40" H  
16" W x 16" D x 46" H  
EUV-LP-GP-01



## The Retail Display Table

Features  
 Make Up/Retail/Experience Table  
 Stainless Steel Pulls  
 8 Drawer Storage  
 Concealed Pullout Shelf  
 Laminate or Lacquered Finishes  
 60" W x 20" D x 36" H

EUV-ET-03-5



## The Experience Table

Features  
 Retail/Experience Table  
 Stainless Steel Frame  
 Laminate Finishes

48" W x 20" D x 36" H  
 60" W x 20" D x 36" H

EUV-MUT-ET-01-4/5



## The Travel Tower

Features  
 Trail Size Impulse Buy Unit  
 Steel Frame  
 Laminate or Lacquered Base  
 Acrylic Lipped Shelves

17" W x  
 14"D x  
 72"H

EUV-LO-TT-01



## The Multi Table

Features  
 Make Up/Retail/Experience Table  
 Stainless Steel Frame  
 Wood Column or Stainless Legs  
 Side Storage  
 Concealed Pullout Drawers  
 Laminate Finishes  
 60" W x 20" D x 36" H

EUV-MUT-ET-01/02-5



## Refreshment Console Bar

Features  
 Modular Console  
 Stainless Steel Pulls  
 Laminate, Lacquered or  
 Wood Veneer Finish

8' or 6' W x 24"D x 36"H

EUV-CS-02-6/8



## The Refreshment Bar

Features  
 Tea, Coffee & Juice Console  
 Stainless Steel Pulls & Legs  
 Glass Top on Risers  
 Laminate, Lacquered or  
 Wood Veneer Finish  
 60" W x 12" D x 36" H

EUV-CS-01-5



## Circle Retail Unit

Features  
 Storage Area  
 Laminate, Lacquered  
 or Wood Veneer Finish

30" W x 30"D x 36"H

EUV-FS-CIR-01



## 2 Table Display

Features  
 Group of 2  
 Laminate, Lacquered or  
 Wood Veneer Finish

48" W x 15" D x 36" H Large Table  
 42" W x 15" D x 32" H Small Table

EUV-FS-2T-01



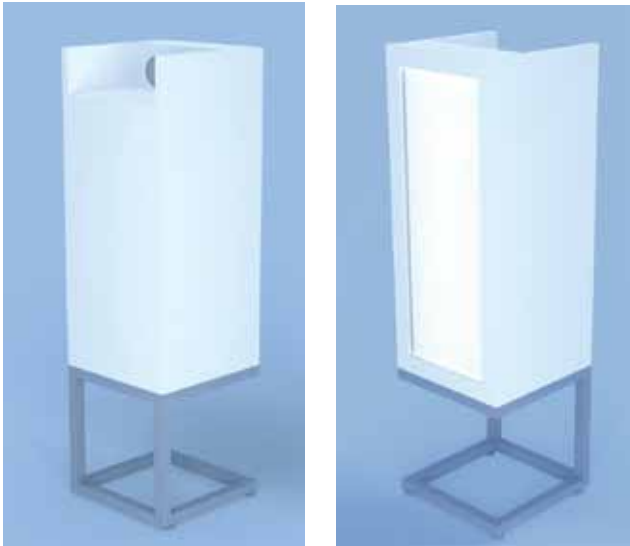
## iPad Stand

### Features

Steel Legs  
Front LED Light Box  
Lacquered or Laminate Finish

12" W x 12"D x 40"H

EUV-VM-ST-IS-01



## Retail Side or Coffee Table

### Features

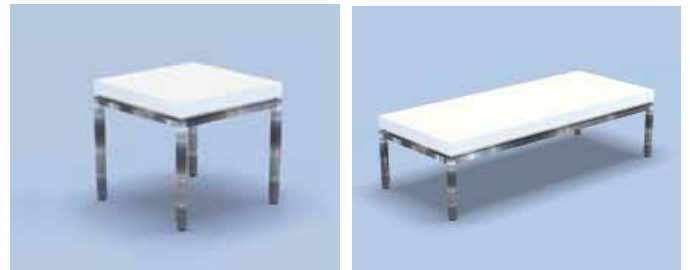
Lacquered or Laminate Finish  
Stainless Steel Legs

Side 18" W x 18"D x 21"H

EUV-RST-01

Coffee 48" W x 20"D x 14"H

EUV-RCT-4-01



## Leicester Squares

### Features

Glass Top Shelves  
LED Illuminated **Option**  
Lacquered, Laminate or  
Wood Veneer Finish

32" W x 32"D x 52"H

EUV-LE-01/02



## Cambridge

### Features

Glass Top Shelves  
LED Illuminated **Option**  
Lacquered, Laminate or  
Wood Veneer Finish

48" W x 27" D x 55" H

EUV-CA-01/02



## The Varick Wall Display Unit

### Features

Steel Frame  
Acrylic or Glass Shelves  
LED Illuminated Shelves  
Laminate or Lacquered Bunkers

48" W x 18" D x 87" H  
EUV-AJ-WD-01-48

36" W x 18" D x 87" D  
EUV-AJ-WD-01-36



## The Varick Freestanding Unit

### Features

Steel Frame  
Acrylic or Glass Shelves  
LED Illuminated Shelves  
Laminate or Lacquered Bunkers

48" W x 24" D x 66" H  
EUV-AJ-FD-01-48

24" W x 24" D x 66" H  
EUV-AJ-FD-01-24



## The Conway 4' Wall Back Panel Unit

- Features
- Powder Coated Steel Frame
- Back Panel
- Frosted Glass Shelves
- Storage Bunker
- Various Finishes

48" W x 15" D x 72" H

EUV-F159-48-PC2/PC3



## The Conway 3' Wall Back Panel Unit

- Features
- Powder Coated Steel Frame
- Back Panel
- Frosted Glass Shelves
- Storage Bunker
- Various Finishes

36" W x 15" D x 72" H

EUV-161-36-PC2/PC3





## The Greenwich Wall Display Unit

### Features

Powder Coated White, Black or  
Grey Steel Frame  
Glass Shelves  
LED Illuminated Shelves  
Laminate or Lacquered Bunkers

48" W x 18" D x 85" H

EUV-GW-01-48

36" W x 18" D x 85" D

EUV-GW-01-36



## The 360 Retail Unit

### Features

Glass or Wood Shelves  
Undershelf LED Illumination  
Stainless Steel Base  
Illuminated Lightbox **Option**  
Black or White Lacquered

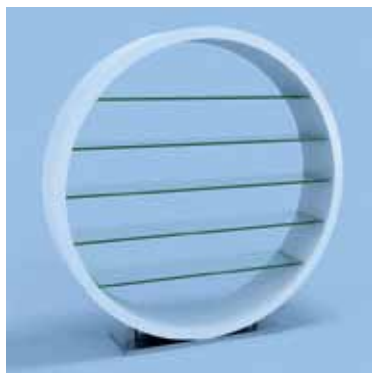
7' W x 16" D x 7' H

EUV-DD-WD-01-84-LQ

Glass Shelf

EUV-DD-WD-02-84-LQ

Wood Shelf



## Portofino 3' or 4' Wall Units

### Features

Contemporary Frame  
 Floating Shelves  
 LED Illuminated Shelves  
 LED Illuminated Lightbox  
 Back Panel **Options**  
 Storage Bunker  
 Laminate or Lacquered

48" W x 17" D x 81" H

36" W x 17" D x 81" H

EUV-PF-WD-01-36-48



## The Hotspur 3' or 4' Wall Display

### Features

Storage Bunker  
Concealed LED Illumination  
LED Illuminated Lightbox  
Lacquered or Laminate Finish

36" or 48" W x 18" D x 84" H

EUV-VS-WD-01-36/48



## The Soldado 30" or 4' Tower

### Features

Storage Bunker **Option**  
Powder Coated Steel  
Lacquered or Laminate Finish

30" or 48" W x 30" D x 66" H  
Illuminated Lightbox **Option**

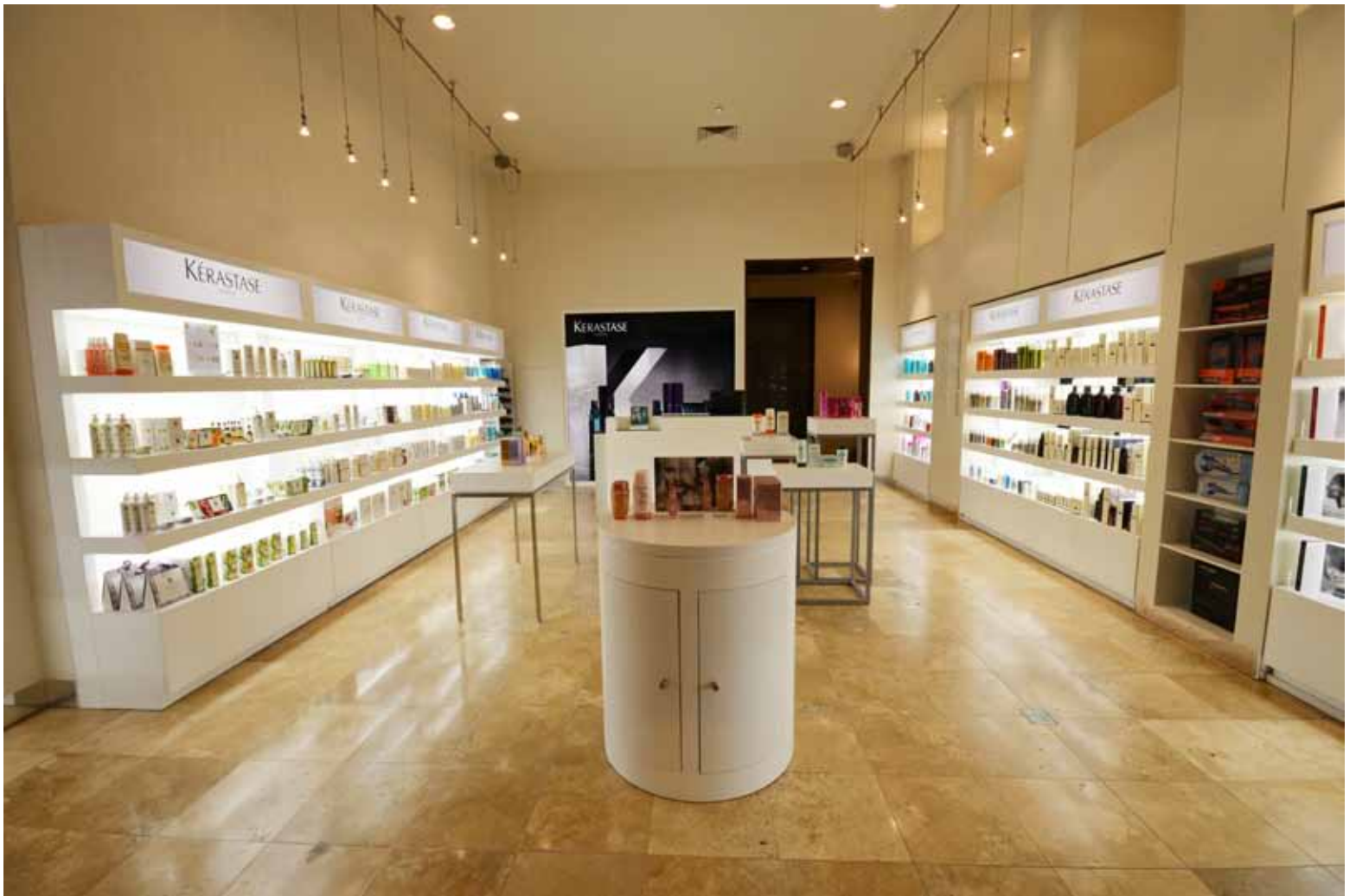
EUV-LO-FD-02-30/48



12

## The Luminance Wall Unit

Features  
Undershelf LED Illumination **Option**  
LED Illuminated Light Box **Option**  
3' or 4' Unit  
Storage Bunker  
Black or White Lacquered  
48" W x 18" D x 84" H 4'  
36" W x 18" D x 84" H 3'  
EUV-LO-WD-01-36/48



## The Enlightenment Air

- Features
- Undershelf LED Illumination
- 3' or 4' Unit
- Storage Bunker
- Laminate or Lacquered
- Light Box Illumination **Option**
- Colored Bunker **Option**

3' W x 18" D x 7' H  
 4' W x 18" D x 7' H



EUV-ELA-3-02  
 EUV-ELA-4-02

## Light Box Unit

- Features
- LED Illuminated Wall or Freestanding Light Box
- Lacquered or Stainless Steel Frame

24 x 36 / 36 x 48  
 48 x 60 / 48 x 72  
 48 x 96

EUV-LO-WD-LB



## The Luminance Freestanding Unit

- Features
- Undershelf Illumination **Option**
- LED Illuminated Light Box **Option**
- 30" or 4' Unit
- Storage Bunker
- Black Lacquered with White Shelves
- 30" W x 30" D x 78" H w/ Lightbox
- 48" W x 30" D x 78" H w/ Lightbox

EUV-LO-FD-01-30/48



## Window Lightbox

- Features
- Powder Coated Steel Frame
- Available in Grey or White
- LED Illuminated Light Box
- Double Sided Window Display

38" H x 94" H x 7" Deep

EUV-LO-MR-LB-02



## The Contempo Wall Display Unit

### Features

Powder Coated White, Black or  
Grey Steel Frame  
Acrylic Side Panel **Option**  
Glass Shelves  
LED Illuminated Under Shelf  
Laminate or Lacquered Bunkers

48" W x 17" D x 84" H  
EUV-CT-01-48  
36" W x 17" D x 84" D  
EUV-CT-01-36



## The Ascot Wall Display Unit

### Features

Powder Coated White, Black or  
Grey Steel Frame  
Glass Shelves  
LED Illuminated Under Shelf  
Laminate or Lacquered Bunkers

48" W x 18" D x 82" H  
EUV-AT-01-48  
36" W x 18" D x 82" D  
EUV-AC-01-36



## The Albany Wall Display Unit

### Features

Steel Frame  
Acrylic or Glass Shelves  
LED Illuminated Shelves  
Laminate or Lacquered Bunkers

48" W x 18" D x 78" H

EUV-AJ-WD-02-48

36" W x 18" D x 78" H

EUV-AJ-WD-02-36



## The Albany Freestanding Unit

### Features

Steel Frame  
Acrylic or Glass Shelves  
LED Illuminated Shelves  
Laminate or Lacquered Bunkers

48" W x 24" D x 72" H

EUV-AJ-FD-02-48

24" W x 24" D x 72" H

EUV-AJ-FD-02-24



## The Enlightenment

### Features

LED Illuminated Backlighting  
 Glass Shelves  
 Storage Bunker **Option**  
 Laminate, Lacquered or  
 Wood Veneer Finish

3' 6' 9' or 12' W x  
 18" D x 84" H

EUV-EL-01/02



## iPad/Laptop Table

### Features

Lacquered Work Surface  
 Up to 4 Monitor Work Station  
 Cash Drawer  
 Available in various Finishes and Sizes

5' W x 30" D x 36" H

EUV-iPT-01



## Kensington Square

### Features

Retail Table for gathering  
 Accomadates 4 Stools  
 Available in Laminate, Lacquered  
 & Wood Veneers

30" W x 30" D x 40" H

EUV-AR-ET-01-30





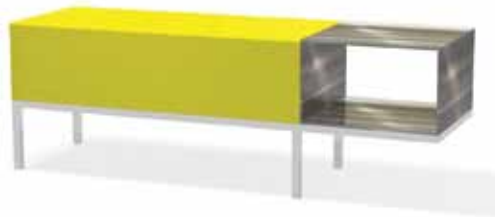
## Retail Benches

### Features

- Single or Double Benches
- Back Support **Option**
- L Shaped **Option**
- Magazine Slots
- Laminate, Lacquered or Stainless Steel

- Double 6' W x 18" D x 18" H
- Single 5' W x 18" D x 18" H
- Mini 20" W x 18" D x 18" H  
(28" H with Back Support)

EUV-DB/SB/MINI



## Oval Benchmark

### Features

- Fabric or Vinyl
- Stainless Steel Legs

- 65" W x 28" D x 18" H No Back
- 65" W x 28" D x 32" H With Back

EUV-RB-NE/BS/65/01



## Double Benchmark

### Features

- Back Support Option
- Magazine Slot Option
- Fabric or Vinyl
- Stainless Steel Legs

96" W x 40" D x 18" H  
 EUV-DB-BB-8-01  
 EUV-DB-BB-BS-01



## Bar Stools

### Features

- Stainless Steel or Powder Coated Steel Frame Option
- Available in Various Material Colors
- Shown with Custom Wine Bar

16" W x 15" D x 46" H  
 EUV-WB-ST-01-PC





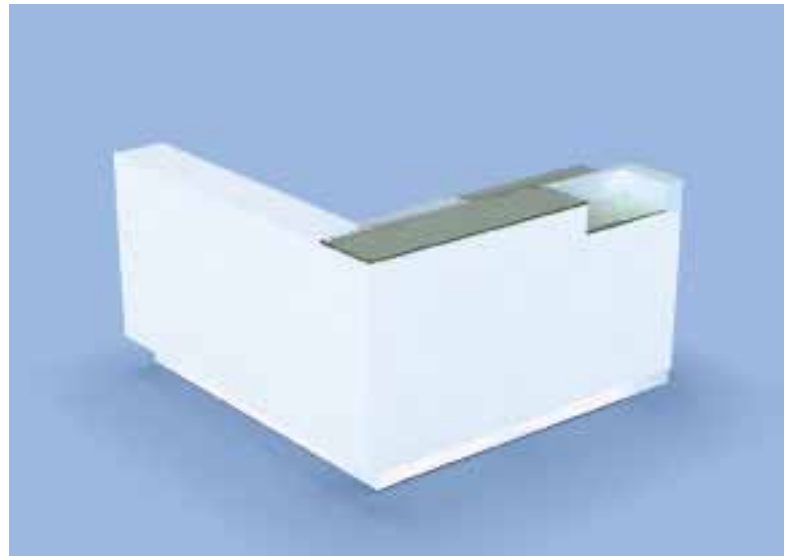
## Berkeley Desk

### Features

- Modular Design
- Storage Areas
- Concealed Floor LED Illumination
- Various Contrast Finishes
- L Shape **Option**

- 3' W x 30" D x 42" H Podium
- 6' W x 30" D x 42" H Grande
- 8' W x 30" D x 42" H Grande Plus
- 9' W x 30" D x 42" H Venti

EUV-BE-02-3/6/9



## The Curve Desk

### Features

- Concealed Illumination
- Glass Work Surface
- Glass on Riser Top
- 3 Monitor Work Station
- Lacquered or Laminate Finish

8' W x 28" D x 42" H

EUV-CV-01-8

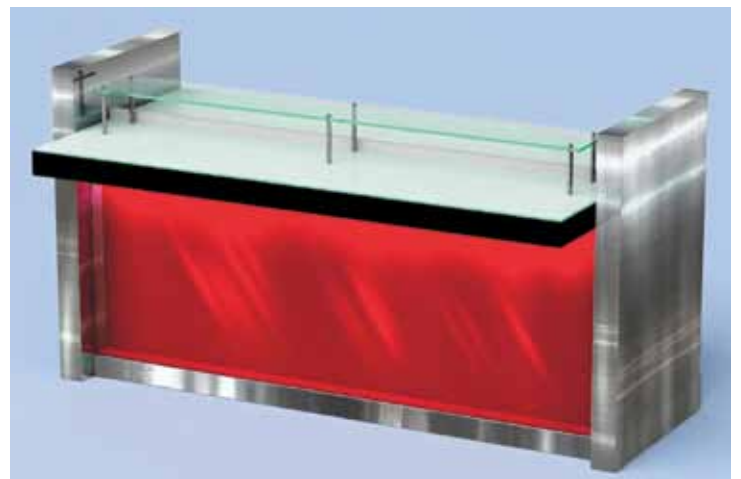


## Bond Desk 3' - 5' - 6' - 8' Options

Features  
 Stainless Steel Sides  
 Concealed Front LED Illumination  
 Acrylic or Wood Veneer Front  
 1 - 3 Computer Monitor Space  
 High Ledge **Option**

3' - 5' - 6' - 8' W x  
 33" D x 44" H

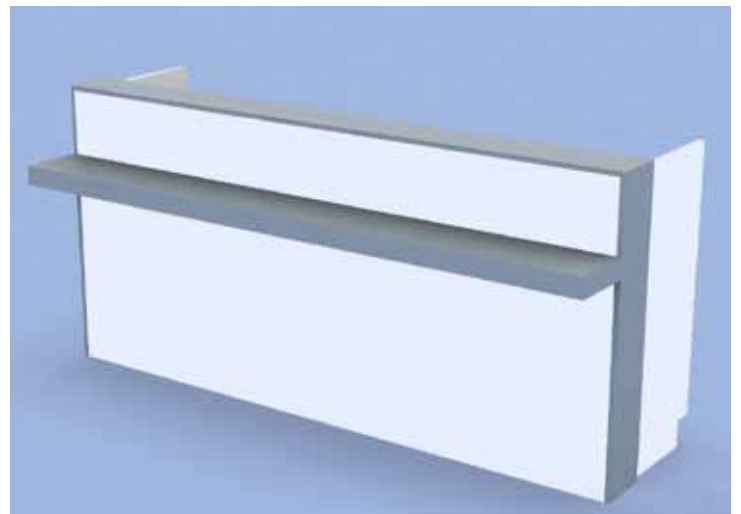
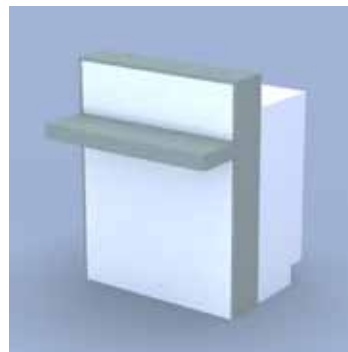
EUV-BO-02



## Desk-Perado

Features  
 3' 6' & 8' **Option**  
 Powdered Steel Accents  
 Trench **Option**  
 1 - 3 Computer Monitor Space

3' 6' or 8' W x 35" D x 45" H  
 EUV-AS-CW-3/6/8





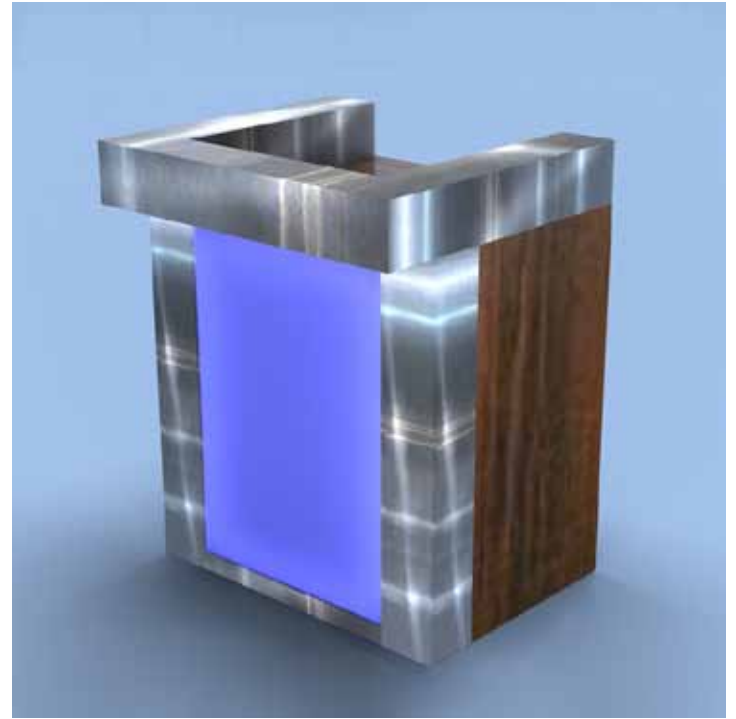
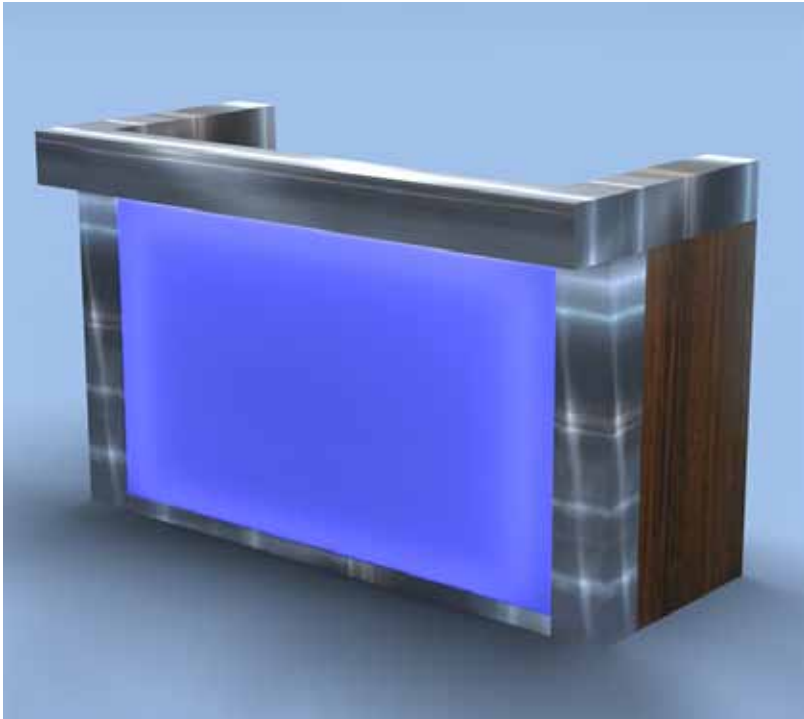
## The Halo Desk

### Features

- Stainless Accent Sides
- Back LED Illumination Facade
- 3' or 6' Desk
- Lacquered or Laminate Finish

6' W x 32" D x 42" H  
3' W x 32" D x 42" H

EUV-01



## The Paramount Desk

### Features

- Stainless Steel Ledge
- Glass Work Surface
- Accent Feature
- 3 Monitor Work Station
- Lacquered or Laminate Finish

8' W x 29" D x 44" H

EUV-PD-01-8

## Spectrum Color Application Table

### Features

- Concealed LED Illumination
- Chrome Mirror Surround
- Stainless Steel or Laminate Top
- iPad Holder **Option**
- Single Sided **Option**
- Various Color **Option**
- 3, 4 or 6 Station Unit

4' or 8' W x 18" D x 54" H  
 12' W x 18" D x 54" H

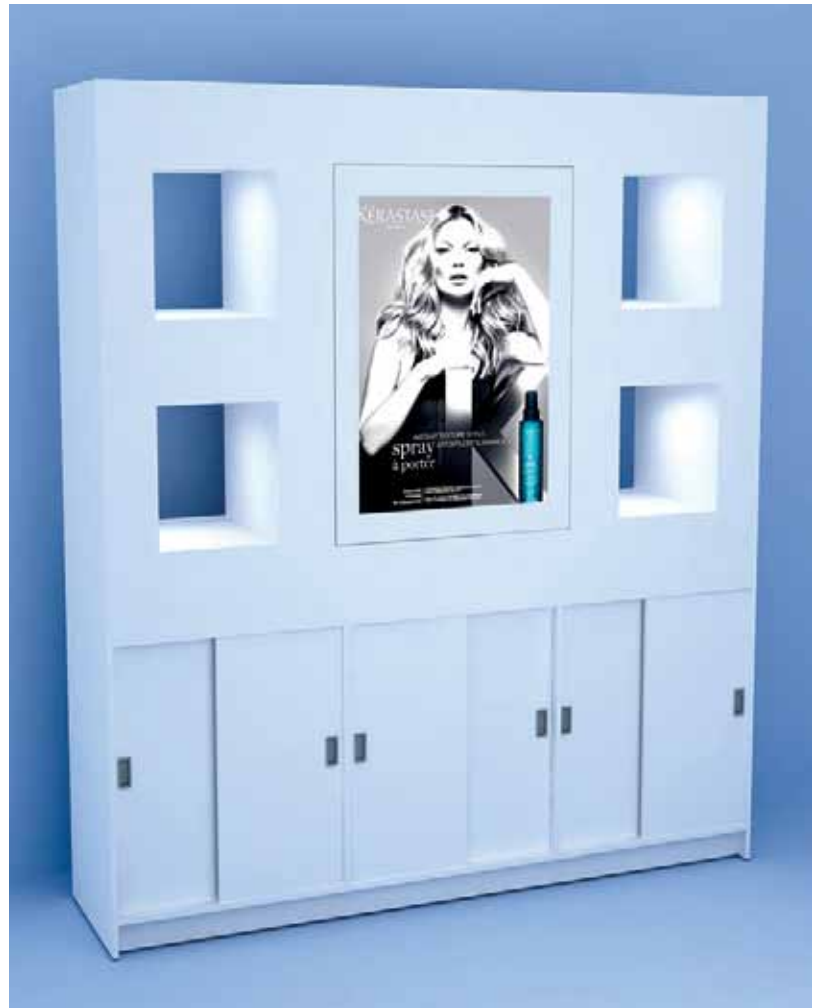


## Back Wrap 5' - 6' - 8' w/Lightbox Option

### Features

- Free Standing or Against the Wall
- Sliding Base Storage
- Full Height or Base **Option**
- LED Illuminated Alcoves
- Accent Color **Option**

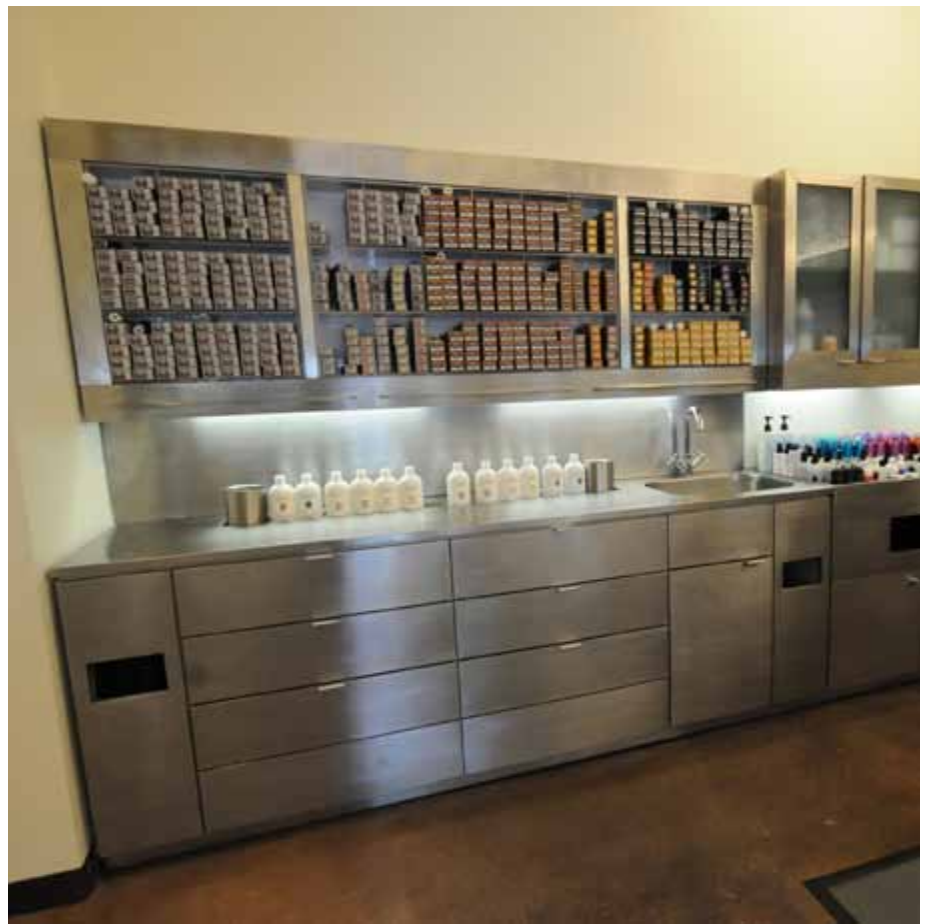
5' 6' or 8' Wide Option  
 84" H Full or 36" H Base  
 18" Deep  
 EUV-BW-01/02  
 EUV-LO-BW-01-8



## 6' or 8' Color Lab

Features  
 Stainless Steel Unit  
 Built In Sink  
 Trash Receptacles Storage  
 Developer Well  
 Concealed LED Illumination  
 Acrylic Backsplash **Option**  
 Used Color Tube Hanging Rail  
 Laminate Unit **Option**

6' W x 24" D x 85" H  
 8' W x 24" D x 85" H  
 EUV-CL-02-6/8



## Round Color Lab

Custom Designed  
 to Specifications

Features  
 Stainless Steel and  
 Laminate Unit  
 Overhead Color Storage  
 Built In Sink  
 Trash Receptacles Storage  
 Developer Well  
 Concealed LED Illumination

EUV-CL-Custom



## 8' - 10' - 12' Double Color Bar

### Features

Double Sided  
Stainless Steel, Quartz or Laminate  
Work Surface and Side Panels  
Built In Sink  
Trash Receptacles Storage  
Developer Well  
Concealed LED Illumination

8' W x 30" D x 78" H  
10' W x 30" D x 78" H  
12' W x 30" D x 78" H

EUV-CL-DS-01-8/10/12





## The Eton Wall Station

### Features

Stainless, Lacquered or  
Laminate Frame  
Stainless or Glass Shelf **Option**  
Side Storage Tool Areas  
Sandblasted Courtesy Circle **Option**  
Angled Station **Option**

72" H x 36" W x 12" D

EUV-MR-IW-03



## The Eton Double Station

### Features

Stainless, Lacquered or  
Laminate Mirror  
Lacquered or Laminate Station  
Stainless Steel Base  
Storage Areas and Tool Holder  
Glass or Stainless Shelf

78" H x 36" W x 16" D

EUV-IW-03



## The Higgs Boson

### Features

Double or Wall Hung Station  
 Side Storage Area  
 Stainless Shelf Shelf **Option**  
 Lacquered or Laminate Finishes

84" H x 30" W x 16" D Double  
 72" H x 30" W x 12" D Wall

EUV-MR-HBS-02/03



## The Bristol Station

### Features

Double Sided or Wall Hung  
 LED Illumination  
 Shelf Included  
 Storage Area & Tool Holders  
 Lacquered or Laminate Finishes

84" H x 34" W x 18" D Double  
 72" H x 34" W x 15 1/2" D Wall

EUV-MR-BW-02/03



## The Wimbledon Wall Station

### Features

- LED Illuminated Mirror Surround
- Stainless, Lacquered or Laminate Frame
- Stainless or Glass Shelf **Option**
- Side Storage Tool Areas

72" H x 34" W x 15" D  
EUV-WIS-03



## The Wimbledon Station

### Features

- Double or Single Station
- LED Illuminated Mirror Surround
- Stainless, Lacquered or Laminate Frame
- Stainless or Glass Shelf **Option**
- Side Storage Tool Areas

80" H x 34" W x 18" D Double  
80" H x 34" W x 16" D Single  
EUV-WIS -02



## The Vega Styling Station

### Features

Double Sided or Wall Station  
Acrylic LED Illuminated Frame  
Storage Area & Tool Holders  
Stainless or Glass Shelf **Option**  
Laminate or Lacquered Finish  
Courtesy Glass Upgrade

78" H x 32" W x 16" D Double  
72" H x 32" W x 14" D Wall

EUV-MR-VGS-01/03



## The Vegan Styling Station

### Features

Double Sided or Wall Station  
 Acrylic LED Illuminated Frame  
 Storage Area & Tool Holders  
 Stainless or Glass Shelf **Option**  
 Laminate or Lacquered Finish  
 Courtesy Glass Upgrade

78" H x 32" W x 16" D Double  
 72" H x 32" W x 14" D Wall  
 EUV-VGS-05/06



## The Belle Vue Styling Station

### Features

Double Sided or Wall Hung  
 Full Length or Stand Mounted  
 LED Illuminated Through Mirror  
 Lacquered or Laminate Station  
 Storage Areas and Tool Holder  
 Glass or Stainless Shelf **Option**  
 Courtesy Glass Upgrade

78" H x 36" W x 22" D Double  
 72" H x 36" W x 15" D Wall  
 EUV-MR-BVS-02/03



## The Lancaster Styling Station

### Features

- Double or Single Station
- Laminate Finish
- Tipout Tool Drawer
- Glass or Stainless Shelf **Option**

- 78" H x 36" W x 16" D Double
- 78" H x 36" W x 12" D Single
- 78" H x 36" W x 12" D Wall

EUV-MR-JPC-01/02/03



## The Supernova Station

### Features

- Double or Single Station
- Illuminated Through the Mirror
- Illuminated Sides
- Glass Ledge
- External or Internal Tool Holder
- Laminate or Lacquered Finish

- 78" H x 32" W x 16" D Double
- 74" H x 32" W x 10" D Single

EUV-SPS-01/02



## The Carrera Station

### Features

Double or Wall Hung Station  
 Side Storage Tool Holder  
 LED Illumination Through the Mirror  
 Lacquered or Laminated Finishes

78" H x 34" W x 16" D Double  
 78" H x 34" W x 14" D Wall

EUV-MR-CRS-02/03



## The Steel Magnolia Station

### Features

Stainless Steel Frame  
 Shelf with Tool Holders  
 LED Illumination  
 Lockable Wheels

82" H x 32" W x 32" D  
 EUV-MR-SC-08



## The Paddington Station

### Features

Quad, Double or Single Sided Station  
 Corian or Laminate Work Surface  
 Laminate or Lacquer Cabinet Finish  
 Powder Coated Steel Frame  
 Wimbledon or Vega Mirror Option

80" H x 10' W x 36" D Quad Station  
 80" H x 10' W x 18" D Double One Sided  
 80" H x 5' W x 36" D Double Station  
 80" H x 5' W x 18" D Single Station

EUV-ST-PV-02-LM/LQ



## The Coventry

### Features

Double or Single Station  
 Oval LED Mirror in  
 Chrome or Lacquered Finish  
 Stainless Steel Tool Holders  
 Laminate or Lacquered Cabinet Finish

80" H x 42" W x 24" D  
 Double Cabinet

80" H x 42" W x 16" D  
 Single Cabinet

EUV-MR-MB-01/02





## The Double O Station

### Features

- Double or Single Station
- Internal or External Tool Holder
- Round LED Mirror
- Laminate or Lacquered Cabinet Finish

72" H x 60" W x 24" D  
Single Cabinet

- EUV-00-DS-01 - External Tools
- EUV-00-DS-02 - Internal Tools



## The Bury Station & Mirror

### Features

- Single Station
- Stainless Steel Worksurface with Surface Tool Holder
- Various LED Mirror Options
- Laminate or Lacquered Cabinet Finish

32" H x 54" W x 14" D  
Single Cabinet  
3' W x 3' H Mirror

EUV-ST-BR-01



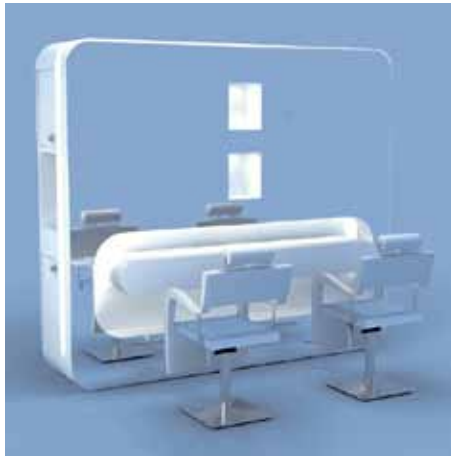
## The Aurora Double & Single Station

### Features

Double Station  
Retail Display Area  
Storage & Tool Holders  
Illuminated LED Surround

84" H x 96" W x 30" D Double  
84" H x 36" W x 30" D Single

EUV-MR-GA-84/36-02



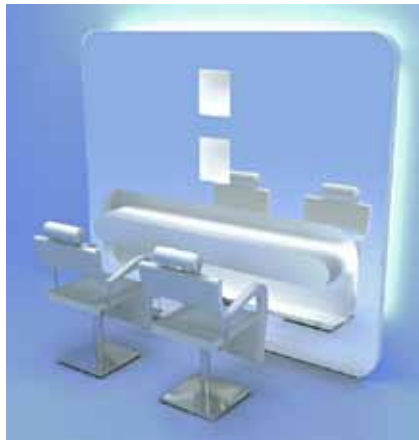
## The Aurora Double & Single Mirror

### Features

Double Mirror  
Retail Display Area  
Illuminated LED Surround  
Wall Hung Styler **Option**

84" H x 96" W x 16" D Double  
84" H x 36" W x 16" D Single

EUV-MR-GA-84/36-01



## The Amarone Station

### Features

Double or Wall Hung  
 Stainless Steel, Lacquered or  
 Laminate Frame  
 LED Illuminated Mirror  
 Stainless Shelf **Option**  
 Courtesy Glass **Option**

### Specifications

80" H x 34" W x 18" D Double  
 68" H x 34" W x 12" D Wall

EUV-BWS-02/03



## The Amarone Mirror

### Features

Wall Hung Mirror  
 Stainless Steel, Lacquered or  
 Laminate Frame  
 LED Illuminated Mirror  
 Stainless Shelf **Option**  
 Courtesy Glass **Option**

### Specifications

68" H x 34" W x 5" D Wall

EUV-BW-03



36

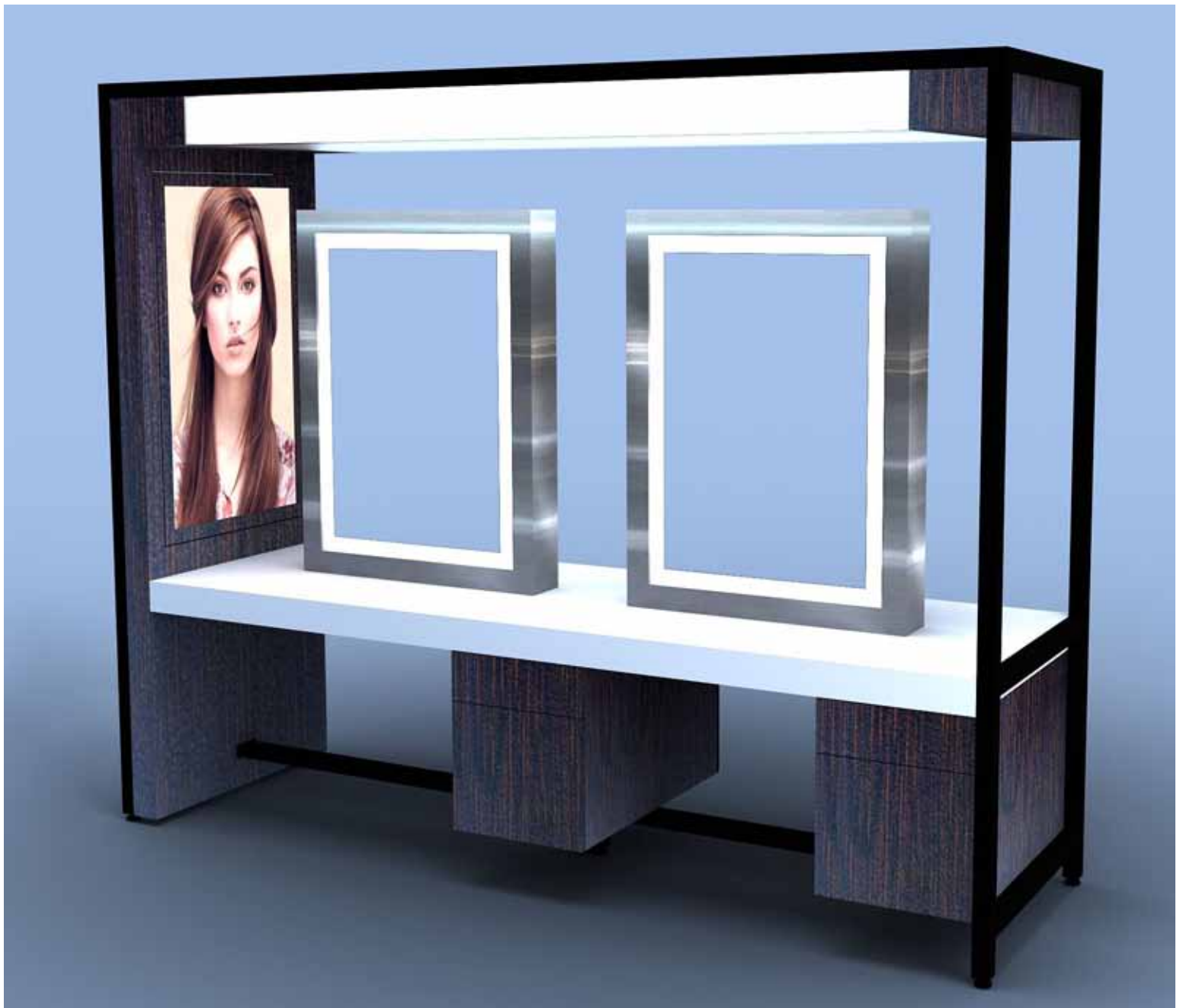
## The Enterprise - Wimbledon

### Features

- Frame in Power Coated Steel
- Over head LED Lightbox
- Vertical Image Lightbox
- Various Mirror Options
- Various Station Options

8' H x 5' W x 36" D  
EUV-ST-PD-02-5

8' H x 10' W x 36" D  
EUV-ST-PD-02-10



## The Concave Mirror

### Features

Wall Hung  
Lacquered Frame  
Illuminated LED Surround  
Stainless or Glass Shelf **Option**

80" H x 36" W x 7" D Wall  
36" H x 36" W x 7" D Square

EUV-MR-AMS-03



## The Windsor Mirror

### Features

Double, Single or Wall Hung  
Asymmetrical Mirror  
Rectangle Stainless Steel Mirror  
Powder Coated Iron Base  
Concealed Illumination  
Laminate, Lacquered or  
Wood Veneer Finish

78" H x 36" W x 16" D  
Double/Single  
76" H x 36" W x 6" D Wall Hung

EUV-MR-WSR-01/02/03



## The Delorean Mirror

### Features

Double, Single or wall Hung  
 Stainless Steel, Lacquered or  
 Laminate Frame  
 Stainless Shelf  
 LED Illuminated Through the Mirror  
 Courtesy Glass **Option**

### Specifications

76" H x 30" W x 16" D Double  
 76" H x 30" W x 16" D Single  
 68" H x 30" W x 6" D Wall  
 EUV-MR-AS-01/02/03



## The Metalica Mirror

### Features

Double, Single or Wall Hung  
 Powdercoated Steel Frame  
 Stainless Shelf With Tool Holders  
 LED Illuminated Sides  
 Laminate or Lacquered Panel **Option**

78" H x 32" W x 16" D Double  
 78" H x 32" W x 10" D Single  
 66" H x 32" W x 10" D Wall

EUV-MR-SC-04/05/06



## The Wimbledon Mirror

Features  
 Double, Single or Wall Hung  
 LED Illuminated Mirror Surround  
 Stainless, Lacquered or  
 Laminate Frame  
 Stainless or Glass Shelf  
 Sandblasted Courtesy Glass **Option**

72" H x 34" W x 18"  
 Double /Single  
 72" H x 34" W x 9" D Wall Hung

EUV-MR-WI-01/02/03



## The Vega Mirror

Features

Double or Wall Hung  
 Surround LED Illumination  
 Stainless or Glass Shelf **Option**  
 Courtesy Circle **Option**

72" H X 36" W x 11" D Double  
 72" H x 34" W x 3" D Wall Hung

EUV-MR-VG-02/03



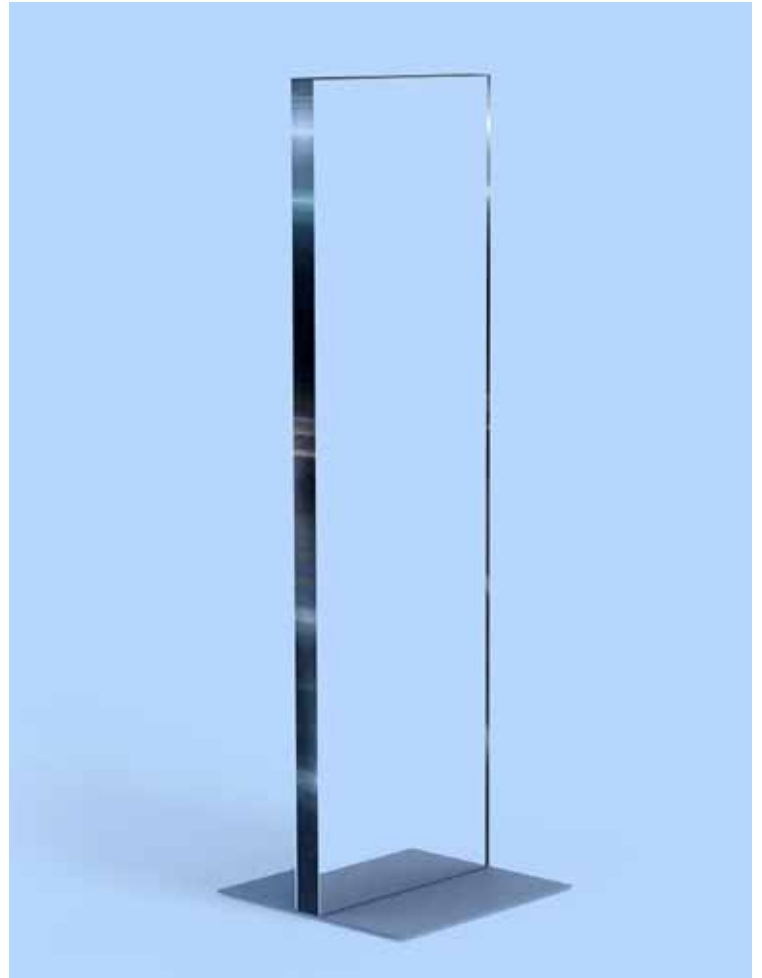
## The Jubilee Mirror

### Features

Stainless or Powder Coated Steel Trim  
 Powder Coated Steel Base  
 Stainless Shelf Option

78" H x 24" W x 3" D

EUV-MR-VC-02-SS/PCS



## The Domino Mirror

### Features

Double, Single or Wall Hung  
 LED Illuminated Sides  
 Lacquered or Laminate Frame Finishes  
 Stainless or Powder Coated Base  
 Stainless Shelf and Courtesy Panel **Option**

EUV-MR-DM-01/02/03





## The Cornwall Single or Double Styler

### Features

Stainless Steel Tray Top  
Pullout Tray  
Internal Tool Holder  
Single or Double Sided  
Lockable Wheels  
Laminate or Lacquered Finish

42" H x 16" W x 16" D Single  
42" H x 16" W x 32" D Double

EUV-ST-GR-01-02



## The Varick Styler

### Features

Glass or Stainless Steel Top  
Steel Frame  
External or Internal Tool Holder  
Lockable Wheel **Option**  
Laminate or Lacquered

42" H x 16" W x 16" D

EUV-ST-AJ-RT-01



## The Trafalgar Single or Double Styler

### Features

Single or Double Sided Styler  
Stainless Steel Product Well Top Internal or External  
Tool Holder  
Laminate or Lacquered

42" H x 16" W x 16" W Single  
42" H 16" W x 32" D Double

EUV-ST-TF-SS/DS-01 Internal  
EUV-ST-TF-SS/DS-02 External



# The Routemaster Styler

## Features

- Stainless Steel, Glass or Corian Top **Option**
- Internal or External Tool **Option**
- Bag Hook **Option**
- Lockable Wheel **Option**
- Various Styler **Options**
- Laminate or Lacquered Single or Double Stylers

42" H x 16" W x 16" D Single  
 42" H x 16" W x 32" D Double

EUV-ST-RT-03/04/05/06/07/08/09/10



Routemaster 10



03



04



05



06



06



07



08



09

## The Dalek Styler

### Features

Glass Top on Risers  
 5" Tool Drawer  
 1 Drawer & 1 Door Storage  
 Chrome Legs  
 Stainless Steel Tool Holder  
 Laminate or Lacquered

38" H x 14" W x 14" D

EUV-ST-DA-02



## The Aurora Styler

### Features

Designed for the Aurora Mirrors  
 Floating Design  
 Drawer Storage  
 Bread Tray  
 Side Tool Holder **Option**  
 Side Slot Opening for Tools  
 White Lacquered

36" H x 16" W x 16" D

EUV-ST-AR-02/03



## The I Stand Styler

### Features

Corian Top  
 Three Drawers  
 Stainless Steel Base  
 Stainless Steel Tool Holders  
 Laminate or Lacquered

36" H x 14" W x 14" D

EUV-ST-IS-03



## The Morgan Styler

### Features

Single and Two Sided Styler  
 Internal or External Tool Holder  
 Single or Double Sliding Top  
 with Sliding Internal Drawer  
 Stainless Steel Top Section  
 with Drop Down Well  
 Stainless Steel Base Stand  
 Laminate or Lacquered

42" H 16" W x 18" D Single  
 42" H 16" W x 32" D Double

EUV-ST-MHS-01/02/03/04



## The Sarasota Single or Double Styler

### Features

Double or Single Styler  
 Stainless Steel Well  
 Multiple Drawers  
 External or Internal Tools  
 Laminate or Lacquered

42" H 16" W x 16" D Single  
 42" H 16" W x 32" D Double

EUV-AS-RT-01/02



## The Soho Styler

### Features

Stainless Sandblasted Glass Door  
 External Stainless Tool Holder  
 Stainless Steel, Laminate or  
 Lacquered

38" H x 16" W x 16" D

EUV-ST-SH-01



### The Dorchester Styling Product Cart

Features

- Mobile Product Cart
- Lockable Wheels
- Laminate or Lacquered
- Towel Drop **Option**

36" H x 48" W x 24" D

EUV-ST-PS-03



### The Rochester Styling Product Cart

Features

- Mobile Product Cart
- Lockable Wheels
- Laminate or Lacquered
- Towel Drop **Option**

36" H x 24" W x 16" D

EUV-ST-PC-01-24



### The Computer Lookup Station

Features

- Pull out Keyboard Tray
- Under or Above Glass Monitor
- Lockable Wheels
- Laminate or Lacquered

36" H x 24" W x 20" D

EUV-ST-LS-03



### The Stainless Steel Trolley

Features

- Lockable Wheels
- Stainless Steel or Powder Coated Finish
- Drawer and Tray

38" H x 20" W x 14" D

EUV-SC-TR-01



## The Double Manicure

### Features

Contemporary Double Table  
 Stainless Steel Legs  
 Storage Area  
 Laminate or Lacquered

8" W x 18" D x 30" H

EUV-MT-DM-01



## The Man-Cure

### Features

Illuminated Side  
 Storage Drawers  
 Glass Top  
 Stainless, Wood or Corian Top  
 Laminate or Lacquered

42" W x 18" D x 31" H

EUV-MT-MA-01



## The Classic

### Features

Solid, Column or Stainless Legs  
 Stainless or Glass Tops  
 Laminate or Lacquered

40" W x 18" D x 31" H

EUV-MT-CL-01



## The Pedicure Station

### Features

Available in 1 - 8 Units  
 Various Material Colors  
 Various Laminate Finishes  
 Includes Sink & Cushions  
 Excludes Faucet

40" W x 53" D x 50" H

EUV-PCS-01-46



## The Beauty Bar

### Features

LED Illuminated Mirror  
 LED Illuminated Domain Lightbox  
 LED Lightbox for Monitor Display  
 iPad Holders  
 Powder Coated Steel Frame  
 Lockable Drawers  
 Trash Opening

6' W x 3' D x 7' H

EUV-BB-MT-01



## The Express Services Bar

### Features

Available in 1 - 5 Units  
 Sink **Option**  
 Concealed Illumination  
 Corian or Laminate Top  
 Lacquered or Laminate Finish  
 Stainless Steel Back Splash  
 LED Illuminated Mirror  
 Used Towel Drop

Custom Sized to Fit

EUV-FB



## The Geneva Makeup Table

### Features

Double or Single Sided  
Steel Frame  
Lockable Drawers  
Laminate or Lacquered Finish  
Trash Opening  
Shown with Vega Acrylic Mirror  
Stainless, Lacquered or  
Acrylic Mirror Available

3' - 6' W x 24" D x 36" H Table  
3' - 6' W x 9"D x 3"H Mirror  
EUV-AJ-MT-01



## The Double Makeup Table

### Features

Double Sided  
Steel Frame  
Lockable Drawers  
Laminate or Lacquered Finish  
Trash Opening  
Shown with Vega Acrylic Mirror  
Stainless, Lacquered or  
Acrylic Mirror Available

6' W x 3' D x 3' H Table  
6' W x 9"D x 3' H Mirror

EUV-AJ-MT-72





## Eurisko Custom Cabinetry

### Shampoo Back Bar



- Illuminated Cabinets
- Concealed Lighting
- Shampoo & Towel Well
- Stainless Steel Top
- Laminate Cabinets
- Stainless Steel or Illuminated Back Splash
- Custom Design to Specifications

### Spa Collection





# EURISKO DESIGN

STYLING CHAIR | SHAMPOO BOWL  
2017 COLLECTION

WWW.EURISKODESIGN.COM  
985.705.0937



Paloma



Angelina





Plexi



Relookage



53



Caruso



Lioness





Globe

---



Eco Fun

---



55



Rialto



Look





Musette

---



Columbina

---



Eufemia

---



Mimi

---





Alu

---



Parfait

---



Strip Tease

---



Lido

---

58



Giorgia

---



Jane

---



Julian

---



Veruska

---

59



Flex

---



Anita

---



Lilac

---



Martina

---

60



Bossa Nova

---



Curved Art

---



Luxis

---



Knoll

---



Yume

---



Luxis

---



Yume IXI

---



RS Elite

---



Eco Fun



Paloma What





Bahamas Plus



Sara What





Luxor Soft Air Massage



Luxor Comfort Plus







Canalgrande

---



Globe What

---





Casanova



Zen





Shiatsu



Oregon





Sky Wash

---



Chakra

---



Sensor

---



Maria C

---

69



Zerbini



Zeus Easy



# Fabric Options



001 C



008 C



113 C



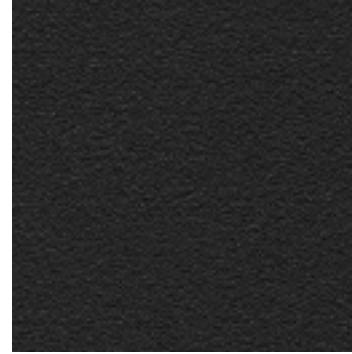
115 C



119 C



121 C



124 C



126 C



130 B



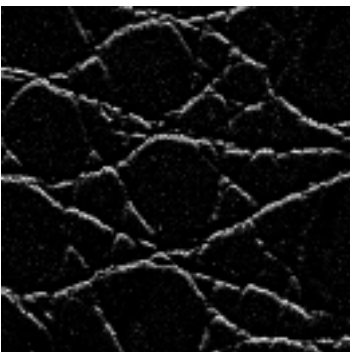
153 C



173 C



468 A



498 A



553 C



559 B



550 C