

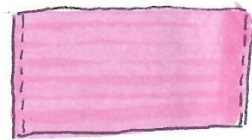
03 27 2025 Program Meeting

Quilt Sleeves, Labels, and Bindings

Quilt Sleeves

Quilt Sleeves - How to Sew a Hanging Sleeve on the Back of Your Quilt

Method 1, Sew a Hanging Sleeve After the Quilt is Bound



Fold sides and sew.



Sew lengthwise, wrong sides together.
Press seam open.



After sewing to quilt, sleeve will poosh out to allow space for rod.

Sew a sleeve to your quilt.
© Janet Wickell

Sewing a sleeve on the back of your quilt makes it easy to hang the quilt for display at home or in a quilt show. The quilt sleeve can be permanent or temporary and it can be sewn on after or at the same time you

Sew on a Sleeve After Binding the Quilt

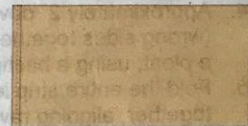
1. Cut or piece together fabric to make a strip 9" tall and the same width as the quilt.
2. Fold under short edges 1/4", wrong sides together. Fold under again. Press. Sew a straight or zigzag seam to hem the folds.
3. Now fold the strip lengthwise, wrong sides together, aligning its raw edges. Sew together with a 1/2" seam allowance. Press the seam allowance open.
4. Place the open seam against the quilt's back. Center and pin the top edge of the tube to the back of the quilt, about 1/2" below the binding.
5. Use a ~~whip stitch~~ whipstitch to sew the top edge of the tube to the quilt backing. Stitch into the batting occasionally to help strengthen the seam.
6. Smooth the sleeve downward along the quilt back, then make a 1/2" fold along its length to create a pleat. Leaving the pleat intact, pin the sleeve bottom to the quilt.
7. Whipstitch the lower edge of the sleeve to the quilt. Remove pins. The sleeve will poosh out a bit to allow space for a hanging rod.
8. Whipstitch the back sides of the sleeve to the quilt. Leave the front sides unsewn to allow for rod insertion.

QUILT SHOW SLEEVE DIRECTIONS

Decide whether you prefer a removable sleeve or a permanent sleeve and then follow the directions below. The directions will create a 4 1/2" sleeve that will accommodate our smaller quilt show rods and yet provide enough "pouch" to enable the quilt to hang flat.

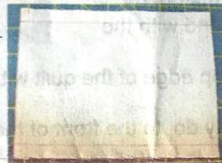
Directions for a Removable Sleeve:

1. Cut and piece, if necessary, a strip of fabric 9 1/2" wide and 1" less than the width of the finished quilt. (This will give you a 4 1/2" hanging sleeve. Adjust the width as needed.)
2. Hem both short ends by turning 1/2" twice towards the back and stitch close to the folded edge.



3. Now fold the strip lengthwise, wrong sides together, aligning its raw edges. Sew together with a 1/2" seam allowance. You should now have something that looks like a tube. DO NOT TURN. Baste a 1/2" inch seam along the opposite folded edge of the tube

Sew both sides.

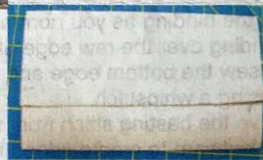


4. Press the long seam that the long seam is middle of tube.

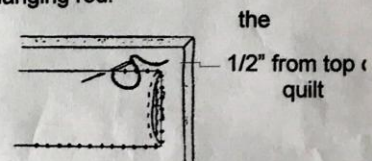
allowance open. Press the tube flat so (Front)
Temporary basted seam to make pleat.



(Back)

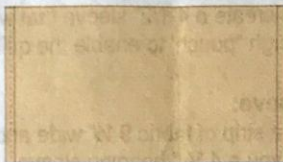


5. Place the open seam against the quilt's back. Center and pin the top edge of the tube to the back of the quilt, about 1/2" below the binding.
6. Use a whipstitch to sew the top edge of the tube to the quilt backing. Stitch into the batting occasionally to help strengthen the seam.
7. Smooth the sleeve downward along the quilt back, and then pin the sleeve bottom along the additional fold along its length.
8. Whipstitch the lower edge of the sleeve to the quilt. Remove pins and temporary basting stitches. The sleeve will pooch out a bit to allow space for a hanging rod.
9. Whipstitch the back sides of the sleeve to the quilt. Leave front sides unsewn to allow for rod insertion.

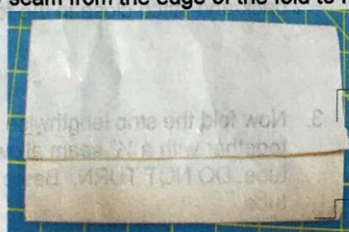


Directions for a Permanent Sleeve:

1. This sleeve is completed before the binding is machine stitched to the front of the quilt.
2. Cut and piece, if necessary, a strip of fabric 9" wide and 1" less than the width of the finished quilt. (This will give you a 6" hanging sleeve. Adjust width as needed.)
3. Hem both short ends by turning $\frac{1}{2}$ " twice, towards the back and stitching close to the folded edge.

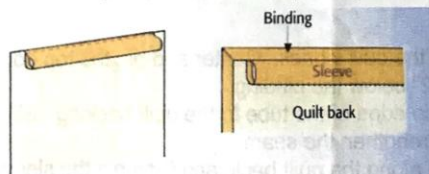
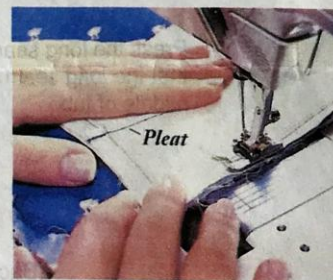


4. Approximately 2" down from a long edge, fold and press the fabric lengthwise together (wrong sides together) and sew a $\frac{1}{2}$ " temporary seam from the edge of the fold to make a pleat, using a basting stitch.
5. Fold the entire strip lengthwise, wrong sides together, aligning raw edges. You should now have something that looks like a tube. DO NOT TURN. Press.
6. Center the tube along the top edge of the quilt, against the backing, aligning its matched raw edges with the edge of the quilt and with the temporary seam on top.
7. Machine sew the sleeve to the top edge of the quilt with an approximate $\frac{1}{8}$ " seam allowance.
8. Attach the binding, as you usually do, to the front of the quilt.
9. Finish the binding as you normally do being sure to sew the binding over the raw edge of the tube at the top.
10. Hand sew the bottom edge and sides of the tube to your quilt using a whipstitch.
11. Remove the basting stitch from the temporary seam facing outward to create added fullness on top. The sleeve should "pouch" a little to help the quilt hang flat.



Temporary
seam to
make pleat

Raw
edge



https://www.youtube.com/watch?v=7NO70_ENjQk

<https://www.americanquilter.com/hanging-sleeve-instructions>

Quilt Labels

Quilt shows generally have specific instructions concerning the information needed on a quilt label. One needs to follow the rules concerning the specific show. The people running the Quilt Show generally tell exactly what is to be on the label - and where to put it.

Sometimes it does not matter which bottom corner to put the label - just a lower corner - but sometimes a label is placed on top - under the hanging sleeve. Sometimes it could be in the center if you wanted it there - but the contents of the label are pretty much always specific.

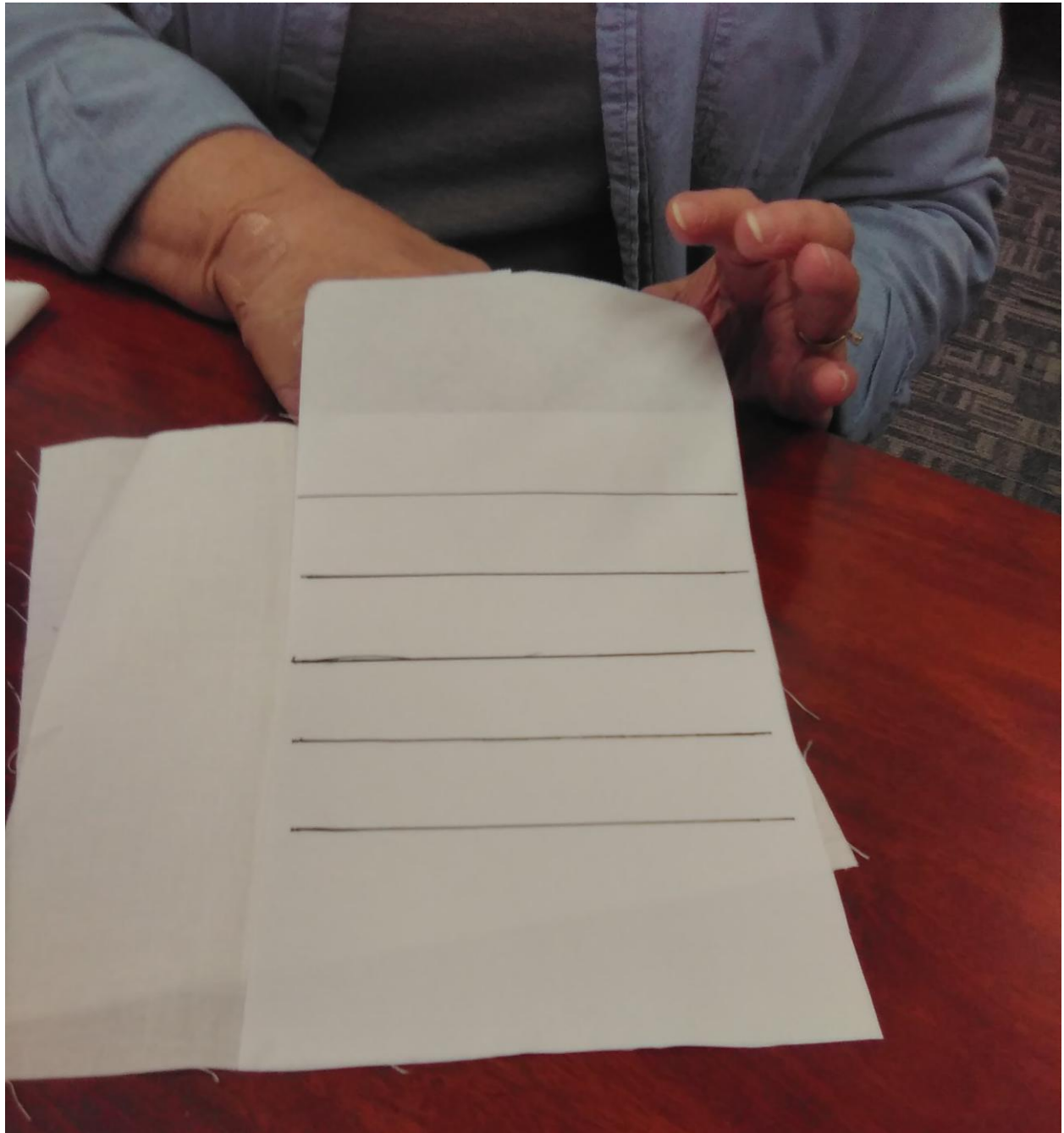
When a show quilt is hung (quilt top is facing the person), the label is usually put on the back of the quilt on the bottom left corner. When a person wants to see the label of the show quilt, they usually lift the bottom right corner of the quilt (which is the bottom left of the quilt back). If the label is on the Quilt front, it is usually put on the bottom right corner of the quilt.

What Common Information Might Be on Your Quilt Label (1 thru 4 mandatory)

1. Quilt Name
2. Date Quilt Was Made
3. Name of Person Who Constructed the Quilt
4. Name of Person/Company Who Did the Quilting
5. Reason Quilt Was Made - occasion, a person
6. Pattern's Design
7. You might need to acknowledge a design inspiration source if the design is not an original piece.
8. Techniques Used

Ways to Make a Quilt Label

1. Using Freezer Paper and writing with Micron Black Pens on Fabric
- <https://www.youtube.com/watch?v=DfzTXlkQr5o>





2. Using an inkjet printer - NOT A LASER JET PRINTER!!
<https://www.youtube.com/watch?v=6Ny3oc9f6GM>
3. Using printable fabric - inkjet printer
<https://www.youtube.com/watch?v=LQ0XunuDS74>
4. Using fabric and Micron pens -
<https://www.youtube.com/watch?v=jYaiguja0M>
5. Using an embroidery/sewing machine -
https://www.youtube.com/watch?v=uB_KCR1-8T8
6. **Terry Aske Art Quilt Studio** -
<https://www.terryaskeartquilts.com/Studio/tips-tutorials-and-more/my-technique-for-quilt-labels/>

Binding a Quilt

1. Machine Bind - <https://www.quiltylove.com/machine-bind-quilt-beginner-friendly-method/>
2. Machine Bind - <https://www.youtube.com/watch?v=DetjUVrtIT4>
3. By-hand Bind - <https://www.youtube.com/watch?v=nnikCudM-54>