



Opelstr. 13 D-64546, Mörfelden-Walldorf, Germany

Tel +49 06105 340-1224
 Mobile +49 176 2342 9839
 E-Mail kathleen@raederbike.de



 **CYCLISTS**

CONTENTS

Bottom Bracket Tool I	P3 - P6
Chain Tool	P6
Cleaning & Accessories	P7
Crank Tool	P7
Cutter	P8
Disc Brake Tool	P8
Display Stand	P9
Folding Tool	P9
Fork & Head Tube Tool	P10
Freewheel Tool	P11
Repair Stand	P12 - P13
Spoke Wrench	P14
Tire Lever	P14
Tool Kit	P15 - P17
Torque Wrench	P17
Wall Hanger	P17 - P18
Work Shop Tool	P18
Wrenches	P19

CT-B02

Cartridge Bottom Bracket Tool

■ Product Details

For Shimano cartridge B.B. with guide pin. Use with 24mm spanner or 1/2" driver.



CT-B03

Cartridge Bottom Bracket Wrench

■ Product Details

For Shimano cartridge B.B.

■ Length 29cm



CT-B05

Bottom Bracket Tool

■ Product Details

For Shimano Hollowtech II B.B. Socket type, use with 24mm spanner or 1/2" driver.



CT-B06

Bottom Bracket Wrench

■ Product Details

For Shimano Hollowtech II, socket type wrench.



CT-B08

Bottom Bracket Wrench

■ Product Details

It designed for the installation and removal of Shimano Hollowtech II external B.B. and BB-9000.



CT-B09

3 Sizes Bottom Bracket Wrench

■ Product Details

It designed for the installation and removal of Shimano Hollowtech II external B.B., BB9000 and BBR60.



CT-B10

4 Sizes Bottom Bracket Wrench

■ Product Details

It designed for the installation and removal of Shimano Hollowtech II B.B., BBR60, MT800, BB9000, BBR9100, XTR BB93 and FSA Mega Evo.



CT-B11

Dust Cap Wrench

■ Product Details

For Shimano Hollowtech II B.B. cap.



CT-B12

Bottom Bracket Wrench

■ Product Details

For Shimano BBR60 and MT800.



BOTTOM BRACKET TOOL

CT-B13

Bottom Bracket Wrench

■ **Product Details**
For Shimano BB9000, BB-R9100 and XTR BB93.



CT-B14

Bottom Bracket Wrench

■ **Product Details**
For installing and removing the 12notches external B.B. bearing, SRAM® DUB™, Race Face® Cinch™, Rotor® BSA30, Zipp® Vuma™, Hawk Racing™ BB3086™.
■ **Size** 12notches*46mm



CT-B15

E-BIKE TOOL

Counter-ring Wrench

■ **Product Details**
For Bosch Active and Performance line, E-bike tool.



CT-B16

Bottom Bracket Wrench

■ **Product Details**
2 in 1 wrench, for Shimano Hollowtech II and 12notches SRAM DUB.



CT-B17

Plastic B.B. Adaptor

■ **Product Details**
Adaptor for Shimano BBR60 MT800.



CT-B18

Plastic B.B. Adaptor

■ **Product Details**
Adaptor for Shimano BB9000, BB-R9100 and XTR BB93.



CT-B19

Bottom Bracket Wrench

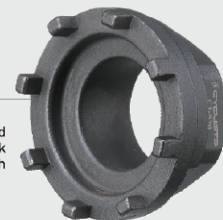
■ **Product Details**
36mm box-end wrench and B.B. pin tool. The pin is hardened, replaceable and the distance between pins is adjustable.



CT-B20

Bottom Bracket Tool

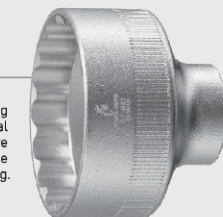
■ **Product Details**
8notches cartridge B.B. tool and compatible with Shimano, Octalink and ISIS Drive. It can be used with 36mm spanner.



CT-B21

Bottom Bracket Tool

■ **Product Details**
For installing and removing Shimano Hollowtech II external B.B. bearing. Use with 1/2" drive wrench. It can prevent the damage of the aluminum bearing.



CT-B22

Bottom Bracket Tool for DUB

■ **Product Details**
For installing and removing the 12notches external B.B. bearing, SRAM® DUB™, Race Face® Cinch™, Rotor® BSA30, Zipp® Vuma™, Hawk Racing™ BB3086™. Use with 1/2" drive wrench.
■ **Material** Aluminum
■ **Size** 12notches*46mm OD



CT-B23

Bottom Bracket Tool

■ **Product Details**
For installing and removing the 12notches external B.B. bearing, SRAM® DUB™, Race Face® Cinch™, Rotor® BSA30, Zipp® Vuma™, Hawk Racing™ BB3086™. Use with 1/2" driver or 24mm wrench.
■ **Material** Steel



CT-B24

Bottom Bracket Tool for Shimano

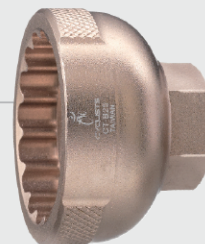
■ **Product Details**
For Shimano BBR60 and MT800. Use with 1/2" driver or 24mm wrench.
■ **Material** Aluminum
■ **Size** 16notches*41mm OD



CT-B25

Bottom Bracket Tool for Shimano

■ **Product Details**
For Shimano BB9000, BB-R9100 and XTR BB93. Use with 1/2" driver or 24mm wrench.
■ **Material** Aluminum
■ **Size** 16notches*39mm OD



CT-B26

Bottom Bracket Tool

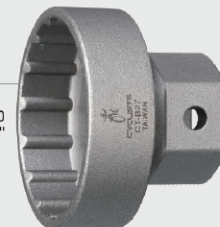
■ **Product Details**
For Shimano BBR60 and MT800. Use with 1/2" driver or 24mm wrench.
■ **Material** Steel



CT-B27

Bottom Bracket Tool

■ **Product Details**
For Shimano BB9000, BB-R9100 and XTR BB93. Use with 1/2" driver or 24mm wrench.
■ **Material** Steel

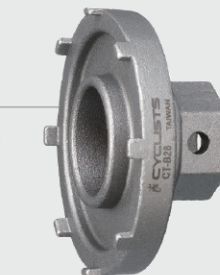


E-BIKE TOOL

CT-B28

E-Bike Counter-ring Opener for Bosch G1

■ **Product Details**
Counter-ring opener for Bosch Classic line.

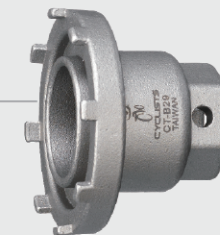


E-BIKE TOOL

CT-B29

E-Bike Counter-ring Opener for Bosch G2

■ **Product Details**
Counter-ring opener for Bosch Active and Performance line.



E-BIKE TOOL

CT-B30

E-Bike Counter Ring Tool for Bosch G3

■ **Product Details**
For Bosch Active Plus system G3.



BOTTOM BRACKET TOOL

CT-B31 E-BIKE TOOL

E-Bike Chaining Tool for Shimano

■ **Product Details**
For Shimano E8000, E6100 and E7000.

CT-B32 E-BIKE TOOL

E-Bike Chaining Tool for Shimano

■ **Product Details** For Shimano E6000.

CT-B33

4 Sizes Bottom Bracket Wrench

■ **Product Details**
For Shimano Hollowtech II B.B., BBR60, MT800, BB9000, BB-R9100, XTR BB93 and SRAM DUB.



CT-B40

Cartridge Bottom Bracket Wrench

■ **Product Details**
For use with Shimano cartridge B.B. With extra long round handle for better torque.



CT-B43

Bottom Bracket Wrench

■ **Product Details**
For Shimano Hollowtech II B.B., Campagnolo B.B. use and new locking on center lock disc.

■ **Length** 289mm

■ **Size** 16notches*44mm



CHAIN TOOL

CT-CR05

Chain Rivet Extractor

■ **Product Details** Professional Chain Tool.

■ **Specification**
7-13 speeds for all the chains. Extra pushing pin.



CT-CR10

Chain Rivet Extractor

■ **Product Details** Professional Chain Tool.

■ **Specification**
7-13 speeds for all the chains. Extra pushing pin. Chain hook.



CT-CR11

Professional Chain Rivet Extractor

■ **Product Details**
Designed for professional shop-quality tool to remove and install bike chain rivets for chain sizing and replacement. It's compatible with virtually all single-speed and multi-speed chains 7-13, including SRAM® FlatTop™ and SRAM® T-Type. With extra pushing pin.



CT-CR15

Replaceable Chain Rivet Extractor

■ **Product Details**
For all 7-13 speeds chains including Shimano, Campagnolo and SRAM chains. With replaceable tips parts, chain hook and extra pin.



CT-CR22

Chain Hook

■ **Product Details**
It's a great tool for holding the chains for the chain assembling work.



CT-CR25

Chain Rivet Extractor

■ **Product Details**
Chain wear tool includes the function of chain hook and measurement tool of spoke nipple.

■ **Size** 3.2/3.3/3.4/3.5/3.6/4mm

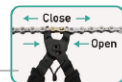
A worn chain shifts poorly and wears sprockets at an accelerated rate. 0.75% and 1%, the points at which chain experts suggest replacement.



CT-CR26

Master Link Tool

■ **Product Details**
Advanced tool for both open and close the chain master link. Patent design.



CT-CR27

Mini Master Link Tool

■ **Product Details**
Multipurpose master link tool for both open and close. For 8-12 speeds chain. With tiny magnets can attach the spare master link. Small design for travel use.



CLEANING & ACCESSORIES

CT-BR01

Bike Cleaning Brush

■ **Product Details**
Fine fiber and wide range brush for bigger cleaning area with soft grip handle.



CT-BR03

Chain Scrubber

■ **Product Details**
Designed for clean the derailleur, cassette and chaining, the toothed end and pick can reach dirt deep between the gears. It's compatible with 13 speeds freewheel cleaning.



CT-BR04

Bike Cleaning Brush

■ **Product Details**
Strong handle can be connected with water tube for cleaning.



CT-BR06

Chain Scrubber

■ **Product Details**
It's compatible with all multi and single-speed chains. It's an large solvent reservoir and a series of four rotating brushes to get chains clean inside and outside and the sponge can reduce the mess and drips during cleaning.



CRANK TOOL

CT-C01

Cotterless Crank Extractor

■ **Product Details**
For square axle, use with 15mm wrench.



CT-C02

Crank Puller

■ **Product Details**
For Shimano spline, oversized B.B. and ISIS drive. With interchangeable adaptor fits both square and splined axles. Use with 15mm wrench.



CT-C03

Cotterless Crank Extractor

■ **Product Details**
For square axle crank with wrench.



CT-C04

Crank Puller

■ **Product Details**
Designed for removing crank from Shimano spindle, oversized B.B. and ISIS drive. With interchangeable adaptor fits both square and splined axles. Use with 15mm wrench.



CT-C06

Chain Ring Nut Wrench

■ **Product Details**
For the chain ring nut and with 8/9/10mm wrench.



CT-C07

Crank Cap Tool

■ **Product Details**
For Shimano adjust cap, SRAM® and RaceFace® crank cap. Use with 8mm hex wrench, 16mm wrench or attach 8mm socket with torque wrench.



CUTTER

CT-W23

Cable Cutter

- **Product Details**
Use for all bike cable.



CT-W34

Cable Cutter

- **Product Details**
With spike to reform the cable housing.



CT-W35

Inner Wire Plier

- **Product Details**
Hold the cable tight for one hand operation.



DISC BRAKE TOOL

CT-DB02

Hydraulic Disc Brake Tool

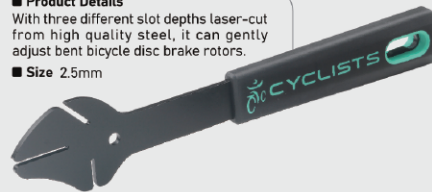
- **Product Details**
It's designed to open piston by pushing the brake pads apart. Small and portable type.



CT-DB03

Rotor Truing Wrench

- **Product Details**
With three different slot depths laser-cut from high quality steel, it can gently adjust bent bicycle disc brake rotors.
- **Size** 2.5mm



CT-DB04

Rotor Truing and Disc Brake Pad Press Tool

- **Product Details**
2 sides functions of both rotor truing tool and disc brake pad press tool.
- **Rotor Truing Tool**
With three different slot depths laser-cut from high quality steel, it can gently adjust bent bicycle disc brake rotors.
- **Size** 2.5mm

- **Disc brake Pad Press**
Designed for spreading the pads by sliding between disc brake pads inside the caliper and press the hydraulic pistons when replacing pads, aligning pads, or performing other service procedures. It's compatible with a wide array of hydraulic disc brake caliper bodies, including those of Shimano® XTR®.



CT-DB11

Hydraulic Disc Brake Hose Tool

- **Product Details**
It's an updated design tool for both brake hose cutter and needle driver insertion tool. It prevents damage when insert the soft brass fittings and make the insertion with perfect alignment. Insert or remove the needle for different fittings. With spare knife and needle.



CT-DB12

Brake Pad Installation Tool

- **Product Details**
For install the brake pad.



DISPLAY STAND

CT-DS07

Bicycle Lever Storage Stand

- **Product Details**
Designed for bike storage from 20mm wide tire on 650C & 700C road wheel to 2.5" wide MTB/BMX tires in size 26" to 29" wheel.



CT-DS08

Universal Bicycle Lever Storage Stand

- **Product Details**
Universal bicycle lever storage stand. For most of bicycles use from 26" to 29", maximum tire wide 5". It's foldable.



CT-DS09

Bicycle Lever Storage Stand, Floor Mount

- **Product Details**
Mount the stand on suitable surface for bike storage from 20mm wide tire on 650C & 700C road wheel to 2.5" wide MTB/BMX tires in size 26" to 29" wheel.



CT-DS10

Universal Bicycle Lever Storage Stand

- **Product Details**
For most of bicycles use from 26" to 29", maximum tire wide 5". It's foldable. Mount the stand on suitable surface for bike storage.



CT-DS17

Universal Display Stand

- **Product Details**
For most of bicycles use from 20" to 29", maximum tire wide 5". It can adjust the pulley height for different sizes of tires.



CT-DS11

Bicycle Wall Rack

- **Product Details**
For wall mounted bike storage from 26" to 29" road bikes and mountain bikes, tire wide 3". Simple push in design, foldable and almost 180 degree rotation.
- **Max Load** 25kgs



CT-DS18

Bicycle Lever Storage Stand

- **Product Details**
The rack is designed for wheel size bikes from the range of 20" kid bikes, 20" to 24" BMX bikes, 26" to 29" MTB and 700c road bikes.
- **Max Tire Width** 2.5"



FOLDING TOOL

CT-FT01

Classic Multi Tool

- **Product Details**
Classic specification for all the riders. 2/2.5/3/4/5/6/8mm/Flat/PH2.
- **Material** CRV ■ **Color** Silver



CT-FT02

Advanced Multi Tool

- **Product Details**
2/2.5/3/4/5/6/8mm hex key wrench, flat/PH2, T25, 14G/15G spoke wrench for Shimano, spoke wrench for Mavic, chain tool and tire levers. CP aluminum side bars.
- **Material** CRV ■ **Color** Silver



CT-FT03

Advanced Multi Tool

- **Product Details**
2/2.5/3/4/5/6/8mm hex key/T25/flat/PH2, tire reamer and tire insertion tool for tubeless tire.
- **Material** CRV ■ **Color** Silver



CT-FT04

Advanced Multi Tool

- **Product Details**
2/2.5/3/4/5/6/8mm hex key/T25/flat/PH2, tire reamer and tire insertion tool for tubeless tire.
- **Material** CRV ■ **Color** Silver



CT-FH01-A / CT-FH01-B

Star Nut Setting Tool

■ Product Details

For installing the stem of fork. Put the star-shaped nut on the tool and tap it into the fork by a hammer.

■ Size 28.6mm (CT-FH01-A) / 25.4mm (CT-FH01-B)

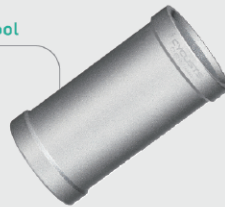


CT-FH10

Crown Race Setting Tool

■ Product Details

For 1.5" and 1 1/8"



CT-FH11

Crown Race Setting Tool

■ Product Details

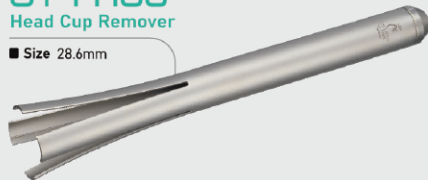
For 1", 1 1/8" and 1.5"



CT-FH03

Head Cup Remover

■ Size 28.6mm



CT-FH04

Head Cup Remover

■ Size 25.4mm



CT-FH08

Press-fit B.B. Removal Tool

■ Product Details

Press-fit B.B. Removal Tool. For Shimano press-fit B.B. bearing removal use, internal diameter 24mm-30mm.



CT-FH12

Saw Guide Set

■ Product Details

It can be used on 25.4 / 28.6 / 31.8mm threadless fork and 21.5mm handlebar. Professional heavy shop use.



CT-FH13

Oversized Adjustable Saw Guide

■ Product Details

It's designed for guiding hack saw to cut fork, airfoil shaped seat posts up to 80mm or round tube from 25.4mm to 45mm in diameter.

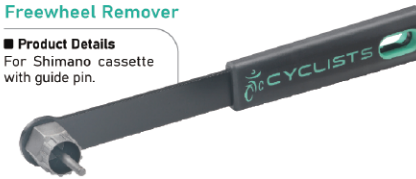


CT-F01

Freewheel Remover

■ Product Details

For Shimano cassette with guide pin.



CT-F02

Chain Whip

■ Product Details

Chain Whip is an essential tool for bike maintenance that holds cassettes in place for easy locking removal. Works on all 7-13 speed road and mountain bike cassettes, as well as single-speed BMX cassettes.



CT-F03

Lock Ring Wrench

■ Product Details

For 7-13 speeds cassette freewheel and BMX 1/8" freewheel.



CT-F04

Chain Whip

■ Product Details

Chain Whip is an essential tool for bike maintenance that holds cassettes in place for easy locking removal. Works on all 7-10 speed road and mountain bike cassettes, as well as single-speed BMX cassettes.

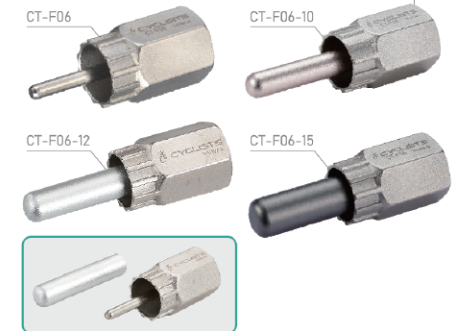


CT-F06 / CT-F06-10 / CT-F06-12 / CT-F06-15

Locking Remover

■ Product Details

For Shimano cassette locking with guide pin. Use with 24mm wrench or 1/2" driver. For thru axle hubs, use with 12mm/10mm/15mm pin.



CT-F07

Freewheel Remover

■ Product Details

For Shimano 12notches freewheel. Use with 24mm spanner.

■ Size 12notches, 22.9mm OD.



CT-F14

Freewheel Whip and Pedal Wrench

■ Product Details

For 7-13 speeds cassette freewheel 2 sides 15mm pedal wrench.



CT-F15

Freewheel Remover

■ Product Details

Lengthened size, use with 21mm spanner or 1/2" driver.

■ Size 12notches*21mm OD



REPAIR STAND



CT-RS01
Bicycle Repair Stand

- **Product Details**
For road bike and mountain bike repair. 360 degree rotated head. Height adjusted.
- **Max Load** 25kgs
- **Material** Aluminum



CT-RS07
E-bike Heavy Duty Bicycle Repair Stand

- **Product Details**
Metal rotated head. Height adjusted. E-bike use.
- **Max Load** 50kgs
- **Material** Aluminum

CT-RSA
Tool Tray



CT-RSB
Carrying Bag



CT-RSJ
Handlebar Holder

- **Product Details**
For repair stand use only, to prevent the handlebar and front wheel from moving when the bike is mounted on the repair stand.
- **Material** Steel



CT-RS08
Professional Bicycle Repair Stand, Tripod Extension

- **Product Details**
For the bikes without clamping the frame and seatpost. It is 360 degrees horizontal rotation and holds the bikes securely by the adjustable clamp. With strap for secure the Bottom Bracket. Foldable design for storage. It can use with tool tray. (CT-RSA). For both QR forks and Thru-axle forks.
- **Material** Aluminum



CT-RSA
Tool Tray

SPOKE WRENCH

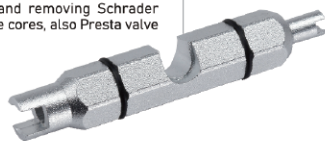
CT-S01 Professional Spoke Wrench

- **Product Details**
3.2/3.5mm diamond shape design. It provides extra strength and helps prevent slipping and deformation of aluminum nipples.
- **Size** 3.2/3.3/3.5/4.0mm



CT-S06 Valve Wrench

- **Product Details**
For installing and removing Schrader and Presta valve cores, also Presta valve extenders.



CT-S08 Spoke Wrench

- **Size** 3.2/3.3/3.5mm



CT-S09 / CT-S10 / CT-S11 Spoke Wrench

- **Product Details** Diamond shape design.
- **Size**
3.2mm nipple, black (CT-S09) / 3.3mm nipple, green (CT-S10) / 3.5mm nipple, red (CT-S11)



TIRE LEVER

CT-P01 Metal Tire Lever

- **Product Details**
Metal tire lever, 2 sides reinforced core for remove different tires even the heavy-duty tires. They are small and portable, 2pcs/set.
- **Length** 100mm
- **Material** Nylon and steel



CT-P02 Metal Tire Lever

- **Product Details**
Plastic-metal boosted. This is the new tire lever set which keep the advantage of strong steel and also covered with plastic part to prevent the rim from damage, 3pcs/set.
- **Length** 120mm
- **Material** Nylon and steel



CT-P04 Metal Tire Lever

- **Product Details**
Metal tire lever with reinforced strength and also one side cover with plastic for the best combination.
- **Length** 202mm
- **Material** Nylon and steel



CT-P05 Tire Lever

- **Product Details** 3pcs/set
- **Length** 120mm
- **Color** Black / Teal
- **Material** Nylon



CT-P06 Tire Lever

- **Product Details**
Nylon tire levers, long type.
- **Length** 200mm
- **Material** Nylon



CT-P07 Tire Clamp

- **Product Details**
Tire clamp is a outstanding design for installing heavy duty tire.
- **Length** 225mm
- **Material** Nylon



CT-P08 Classic Tire Lever

- **Product Details**
For installing and removing the tire, 3pcs/set.
- **Color** Black / Teal
- **Length** 117mm
- **Material** Nylon



TOOL KIT



CT-K01 Professional Tool Kit, 23 items

- Chain rivet extractor (CT-CR10)
For 7-13 speeds chain, with chain hook and extra pin
- 8mm hex key wrench/ 1/2" Adaptor (CT-W17)
- 15mm Pedal wrench (CT-W24)
- 14/15mm socket wrench and 10mm wrench
- Bottom Bracket wrench (CT-B08)
For Shimano Hollowtech II, BB9000, BB9100 and MTBB93
- Chain ring nut wrench (CT-C05)
- Patch kit (CT-P03)
- Hex key wrench set 2/2.5/3/4/5/6mm (CT-W01)
- Freewheel turner and lock ring wrench (CT-F03)
For Shimano cassette lock ring (Chain whip) and single speed freewheel tool
- Multipurpose master link tool (CT-CR26)
For open and close the master link
- Cartridge B.B. tool (CT-B02)
- Cassette Lock ring tool (CT-F06)
For Shimano cassette lock ring
- Spoke wrench 3.2/3.3/3.5/4.0mm (CT-S01)
- Crank cap wrench (CT-B11)
- Hub spanner 13/14/15/16/17/18mm, 3pcs (CT-W14/15/16)
- Metal tire lever set, 2 pcs (CT-P01)
- Crank puller (CT-C04)
Interchangeable adaptor for square spindle axle and ISIS drive
- 3mm flat screwdriver (CT-W18)
For derailleur adjustment
- 5mm flat screwdriver/Phillips screwdriver (CT-W19)
- T20/T25/T30 wrench (CT-W20/21/22)



CT-K02 Professional Tool Kit, 26 items

- Chain rivet extractor (CT-CR10)
For 7-13 speeds chain, with chain hook and extra pin
- Hub spanner 13/14/15/16/17/18mm, 3pc (CT-W14/15/16)
- 8mm hex key wrench/ 1/2" Adaptor (CT-W17)
- Chain ring nut wrench (CT-C05)
- Bottom Bracket wrench (CT-B08)
For Shimano Hollowtech II and 12notch external B.B. bearing 12"46mm
- 3mm flat screwdriver (CT-W18)
For derailleur adjustment
- 5mm flat screwdriver/Phillips screwdriver (CT-W19)
- T20/T25/T30 wrench (CT-W20/21/22)
- Patch kit (CT-P03)
- B.B. adaptor (CT-B17)
For BBR60 and MT800 / Use with Bottom bracket wrench CT-B16
- B.B. adaptor (CT-B18)
For BB9000, BB-R9100 and XTR BB93 / Use with Bottom bracket wrench CT-B16
- Multipurpose chain wear indicator (CT-CR25)
Chain wear tool, chain hook and measurement tool of spoke nipple / Size:3.2/3.3/3.4/3.5/3.6/4mm
- 15mm Pedal wrench and Freewheel turner (CT-W24)
For 7-12 speeds freewheel
- Multipurpose master link tool (CT-CR26)
For open and close the master link
- Cassette Lock ring tool with 12mm guide pin (CT-F06-12)
For Shimano cassette locking with guide pin / Use with 24mm wrench or 1/2" driver
- Crank puller (CT-C04)
Interchangeable adaptor for square spindle axle and ISIS drive
- Hex key wrench set 2/2.5/3/4/5/6mm (CT-W01)
- Cable cutter (CT-W23)
- Metal tire lever set, 2pcs (CT-P04)
- Spoke wrench 3.2/3.3/3.5/4.0mm (CT-S01)
- Crank cap wrench (CT-B11)
- Essential torque wrench (CT-T03+BITS)
1/4"driver / Range:2-12Nm / Bits:2/2.5/3/4/5/6/8/PH2/T10/T25



CT-K03

Advanced Tool Kit, 20 items

Chain rivet extractor (CT-CR10)
For 7-13 speeds chain, with chain hook and extra pin

Cartridge B.B. tool (CT-B02)
For Shimano cartridge B.B. and ISIS drive

Hex key wrench set 2/2.5/3/4/5/6mm (CT-W01)

Patch kit (CT-P03)

Chain ring nut wrench (CT-C05)

Long tire lever set, 2 pcs (CT-P06)

8mm hex key wrench/ 1/2" Adaptor (CT-W17)

5mm Pedal wrench (CT-W05)

14/15mm socket and 10mm wrench

Freewheel turner (CT-F04)
For 7-12 speeds freewheel

Bottom Bracket wrench (CT-B43)
For Shimano Hollowtech II BB and locking on the center lock disc

Crank puller (CT-C04)
Interchangeable adaptor for square spindle axle and ISIS drive

Crank cap wrench (CT-B11)

Spoke wrench 3.2/3.3/3.5mm (CT-S08)

Hub spanner 13/14/15/16mm, 2pcs (CT-W10)

Lock ring remover (CT-F06)
For Shimano cassette lock ring, use with 1/2" driver or 24mm spanner

3mm flat screwdriver (CT-W18)
For derailleur adjustment

5mm flat screwdriver/Philips screwdriver (CT-W19)

T20/T25/T30 wrench (CT-W20/21/22)



CT-K07

Mechanic Tool Kit, 34 items

Chain scrubber (CT-BR06)

Bike brush (CT-BR03)
For freewheel and bike clean

Hub cone spanner (CT-W28)
13/14/15/16/17/18mm

Adjustable chain remover (CT-CR11)
For 7-13 speeds chain, with extra pin

Freewheel remover (CT-F01)
For Shimano cassette lock ring

Freewheel turner/Pedal wrench (CT-F14)
For 7-13 speeds freewheel and 15mm pedal

Chain ring nut wrench (CT-C06)
For Chain ring nut and with 8/9/10mm wrench

Spoke wrench 3.2mm (CT-S09)

Spoke wrench 3.3mm (CT-S10)

Spoke wrench 3.5mm (CT-S11)

5mm flat screwdriver/Philips screwdriver (CT-W19)

3mm flat screwdriver (CT-W18)

Multipurpose master link tool (CT-CR26)
For open and close the master link

Cable cutter (CT-W23)

Crank cap wrench (CT-B11)

Ball-end hex key wrench (CT-W02-BK)
1.5/2/2.5/3/4/5/6/8/10mm

Multipurpose chain wear indicator (CT-CR25)
Chain wear tool, chain hook and spoke nipple measurement tool of size 3.2/3.3/3.4/3.5/3.6/4mm

4 sizes Bottom Bracket wrench (CT-B10)
For Shimano Hollowtech II BB, BB-9000, BB-R9100, XTR BB93, BBR60, MT800 and FSA Mega Evo

Chain hook (CT-CR22)

8mm/10mm spanner (CT-W25)

12mm/14mm spanner (CT-W26)

Patch kit (CT-P03)

Crank puller (CT-C02)
With interchangeable adaptor for Shimano splined B.B. and ISIS drive

Cartridge B.B. tool/Square adaptor (CT-B02)

Dual functions wrench (CT-DB4)
Rotor flattening tool and hydraulic disc brake pads pushing tool

Metal tire lever, 2pcs (CT-P04)

T20 (CT-W20) / T25 (CT-W21) / T30 (CT-W22)



CT-K08

Essential Bike Tool Kit, 7 items

Chain rivet extractor (CT-CR10)
For 7-13 speeds chains, with chain hook and extra pin

Cartridge B.B. tool (CT-B02)
For Shimano cartridge B.B. and ISIS drive

Freewheel turner (CT-F04)
For 7-12 speeds freewheel

Crank Puller (CT-C04)
Interchangeable adaptor for square spindle axle and ISIS drive

Multipurpose chain wear indicator (CT-CR25)
Chain wear tool, chain hook and measurement tool of spoke nipple size 3.2/3.3/3.4/3.5/3.6/4mm

Multipurpose master link tool (CT-CR26)
For open and close the master link

Cassette lock ring tool (CT-F06-12)
With 12mm guide pin, for Shimano cassette lock ring and thru axle hubs, use with 1/2" driver or 24mm spanner

CT-T01

1/4" Torque Wrench Set

■ **Product Details** 1/4"

■ **Range** 2/24NM

■ **Bits** 3/4/5/6/8/10mm/
T20/T25/T30/5mm-L



CT-T02

1/4" Torque Wrench Set

■ **Product Details**
1/4", it's an updated design for set up the torque value securely by tighten the bottom screw.

■ **Range** 2/24NM

■ **Bits** 3/4/5/6/8/10mm/
T20/T25/T30/4mm-L/5mm-L



CT-T03 + BITS

Essential Torque Wrench

■ **Product Details** 1/4"

■ **Range** 2-12NM

■ **Bits** 2/2.5/3/4/5/6/
8mm/PH2/T10/T25



WALL HANGER

CT-H04

Wall Hanger

■ **Product Details**
For pedal use.



CT-H05

Bicycle Storage Hanger

■ **Product Details**
For most of bikes wheel size 14"-29" and max tire width 2.4". Simply installed, durable and space saving.

■ **Max Load** 20kgs



CT-H07

Bicycle Storage Hanger

■ **Product Details**
New designed wall mount display hanger for different types of bikes and heavy duty bikes. The hanger bar is straight shape with a groove in the middle. Easy to hang all kind of bikes.

■ **Max Load** 25kgs



CT-H10

Bicycle Wall Hanger

■ **Product Details**
It is foldable design and quick operation for display your bike.

■ **Max Load** 25kgs



WALL HANGER

CT-H13 Rotatable Bicycle Storage Hanger

■ Product Details

It's compatible with aluminum rim for bike storage from 26"-29" road and mountain bikes, tire width 2.5" and with rear wheel pad (CT-H13-P). It's almost 180 degree rotation.

■ Max Load 25kgs

CT-H13-P Rear Wheel Pad



CT-H15 Bicycle Storage Hanger

■ Product Details

It's added with reinforce steel base for bike storage from 26"-29" road and mountain bikes, tire width 2.5".

■ Max Load 25kgs



WORK SHOP TOOL

CT-WS06 Wheel Truing Stand

■ Product Details

For wheel from 16"-29".



CT-WS07 Thru Axle Adaptor

■ Product Details

Use with CT-WS06 wheel truing stand to work for 12mm, 15mm, 20mm thru axle front wheel and rear 135mm, 142mm thru axle hubs.



CT-WS08 Seat Tube Gauge

■ Material Aluminum

■ Size Ø34.9/31.8/31.6/31.4/30.9/30.8/30.4/30.2/30/29.4/29.2/28.8/28.6/28.2/27.4/27.2/27/26.8/26.4/26.2/26/25.8/25.6/25.4/25mm



CT-WS09 Tubeless Tool Kit

■ Product Details

With 2 ways functions of tire reamer and insertion tool which are installed on the aluminum case. Also, it includes 5pcs*1.5mm thickness stripes for road tires and 5pcs*3.5mm for mountain bike and hybrid tires.

■ Material

Aluminum / Stainless steel



CT-WS10 Internal Cable Routing Kit

■ Product Details

It's designed to routing the cables, wires and housing of the internal frame. The kit includes magnet guide tool, adaptor tips and 2.5m installation cables, each with a magnet on one end and tapered adaptor tip/DI2 adaptor tip on the other end. For carbon fiber, titanium, and aluminum frames with a minimum 6mm hole. Including DI2 EW-SD300 adaptor.



CT-WS11 Pick Set

■ Product Details

3 picks with magnets for small details work.

■ Material Aluminum



WRENCHES

CT-W02-BK 9 PCS Hex Key Wrench Ball-End

■ Product Details

Ball-end, 1.5/2/2.5/3/4/5/6/8/10mm

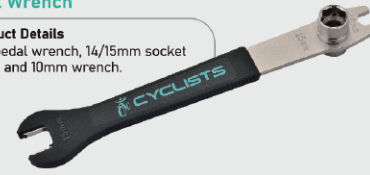
■ Material CRV



CT-W05 Pedal Wrench

■ Product Details

15mm pedal wrench, 14/15mm socket wrench and 10mm wrench.



CT-W06 Pedal Wrench

■ Product Details 15mm*2

■ Length 350mm



CT-W07 Pedal Wrench

■ Product Details 15mm*2

■ Length 290mm



CT-W12 1/2" Socket Wrench

■ Size 1/2" socket



CT-W01 / CT-W13 Hex Wrench

■ Size 2/2.5/3/4/5/6mm hex key wrenches CT-W01 (black) / CT-W13 (6 colors).



CT-W14/15/16 Hub Spanner

■ Product Details

CT-W14 13mm/14mm spanner
CT-W15 15mm/16mm spanner
CT-W16 17mm/18mm spanner



CT-W24 Pedal Wrench and Freewheel Tool

■ Product Details

15mm pedal and chain whip for 7-13 speeds.



CT-W28 Hub Spanner

■ Product Details

13/14/15/16/17/18mm hub spanner, 6pcs/set.

■ Length 207MM

CT-W28-13, 13mm/CT-W28-14, 14mm/
CT-W28-15, 15mm/CT-W28-16, 16mm/
CT-W28-17, 17mm/CT-W28-18, 18mm



CT-W32 Hex Wrench Set

■ Size 2/2.5/3/4/5/6/8/10mm



CT-W33 3 Sizes Wrench

■ Size 4/5/6mm



CT-W2-10THB / T25TPH / T30TPH Hex Wrench Set 2mm-10mm, T25 T30

■ Product Details

Ball-type hex wrench and T handle are ergonomic perfection for comfortable use.

■ Size 2/2.5/3/4/5/6/8/10mm/T25/T30

