

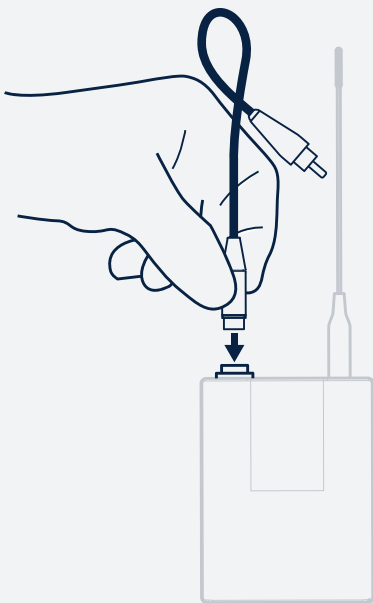
Catchbox Mod

Transmitter compatibility



The Catchbox Module is a module, converting existing beltpack transmitters and lavalier microphones into throwable microphones. The Catchbox Module requires its own transmitter. To make sure that your equipment will be compatible with Catchbox Module, see the info below.

1. Make sure that you have the right adapter cables in order to connect with the Catchbox Module.



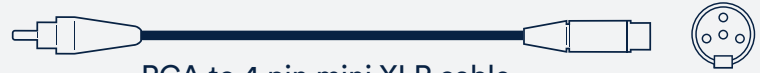
Catchbox comes with 3 adapter cables



RCA to 3.5 mm (1/8 in) jack

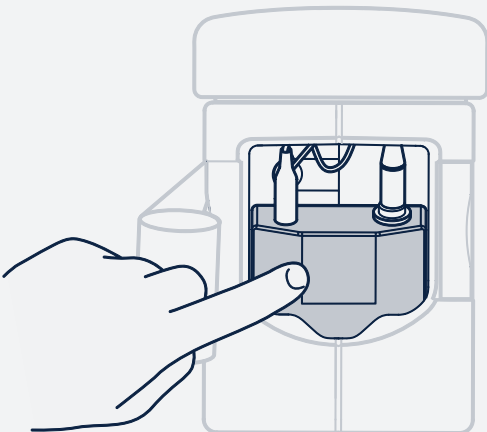


RCA to 3 pin mini XLR cable



RCA to 4 pin mini XLR cable

2. Make sure that your transmitter size fits the capsule dimensions.




**Catchbox Module cavity dimensions -
87 × 68 × 30 mm / 3.4 × 2.7 × 1.1 in**

There might be exceptions

Compatible Transmitters

To check compatibility, find your transmitter in the list

 Supported cables included in the package

 Supported cables available for purchase

SHURE

ULXD1
QLXD1
UR1M
GLXD1
AD1 with TA4 connector

SENNHEISER

SK 100 G3
SK 100 G3 1G8
SK 500 G3
SK 100 G2
SK 100 G4
SK 500 G4
SK 300 G4
SK 100 G4
XSW-D

AKG

PT470
PT420
PT45
PT40 mini
DPT800
DPT700
PT40 Pro
PT40 Flexx

MIPRO

ACT-70T
ACT-70TC
ACT-72T
ACT-71TA
ACT-72TC
ACT-50T
ACT-52T
ACT-52TC
ACT-30T
ACT-32T
ACT-32TC
ACT-80T
ACT-80TC
ACT-8Ta
ACT-24TC
ACT-24T

LECTROSONICS

UM400
LMb/E01
LT/E01
SMB/E01
SMDB/E01
LMB-B1

AUDIO TECHNICA

AEW-T1000
ATW-T1801
ATW-T310b
ATW-T210a

SONY

UTX-B03
UTX-B2
ZTX-B01
ZTX-B02RC



If you didn't find your transmitter model in the list, contact Catchbox customer support via Live Chat on our website or send us an e-mail to info@catchbox.com