

Catchbox Mod

Technical specifications

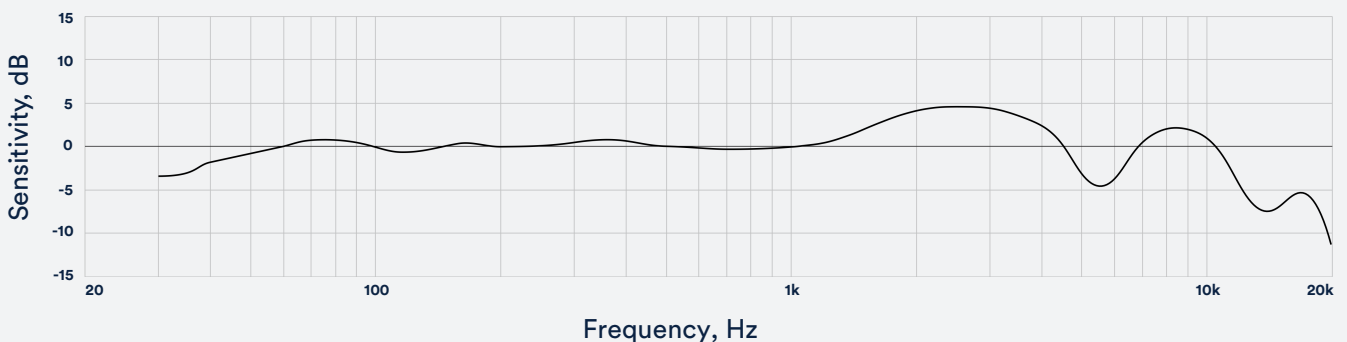


Catchbox Mod converts any wireless beltpack transmitter into a Catchbox throwable microphone for audience engagement. Catchbox Mod comes with an integrated professional microphone element and features Automute™ technology, which automatically mutes the Catchbox when in motion. Specially designed adapter cables ensure full compatibility with transmitters from all major wireless microphone brands.

General Specifications

Weight (with Cover, without wireless transmitter)	280 g / 9.90 oz
Dimensions (with Cover)	180 x 180 x 180 mm / 7 x 7 x 7 in
Built-in Automute technology	Yes
Working range	Depends on the wireless system used*
Battery type	1 x AA (LR6)
Battery life	>20 hours (with alkaline battery)
Microphone element	Electret condenser, omni-directional
Additional audio latency	0 ms
Audio frequency response	30 to 20 000 Hz
Operating temperature range	0 °C (32 °F) to 30 °C (86 °F)
Storage temperature range	0 °C (32 °F) to 50 °C (122 °F)
Wireless charger compatible	No

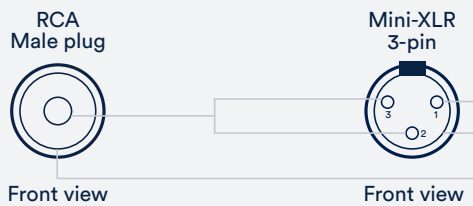
Audio frequency response



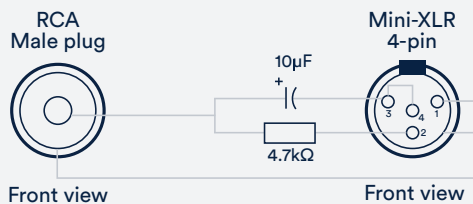
Frequency response is measured with attached foam cap

Adapter cables included

Mini-XLR TA3 (AKG compatible)



Mini-XLR TA4 (Shure compatible)

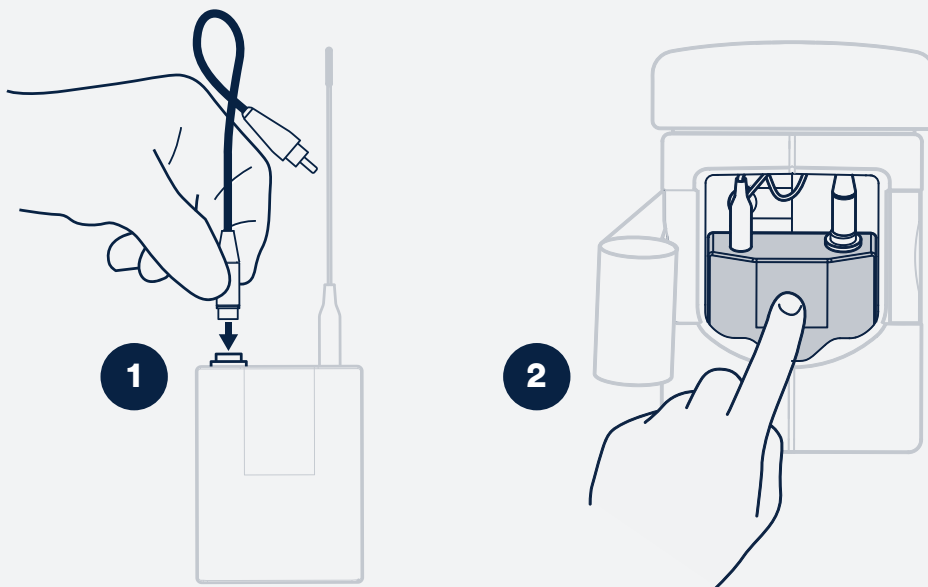


3.5 mm / 1/8in jack (Sennheiser compatible)



Cables for other brand transmitters available for purchase. See full compatibility list on [our website](#)

Quick start guide



1. Plug the compatible adapter cable to the 3rd party transmitter

2. Plug the adapter cable to Catchbox Mod and make sure that the transmitter is safely fitted in the cavity

Cavity dimensions - 87 × 68 × 30 mm / 3.4 × 2.7 × 1.1 in