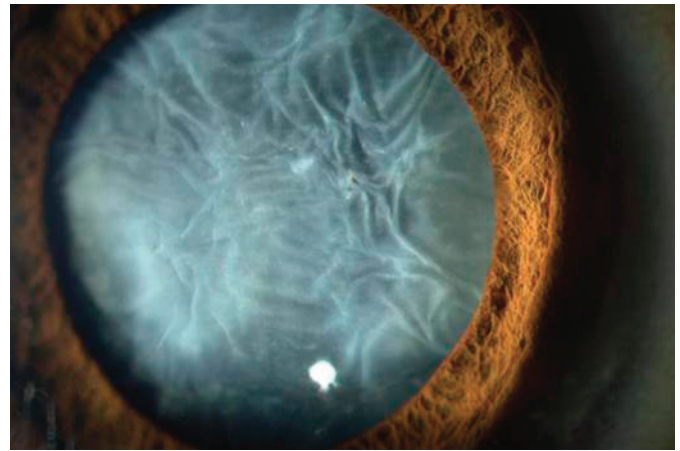




491 30th Street,
Suite 201
Oakland, CA
94609
Ph: (510) 836-2122
Fax: (510) 836-3773



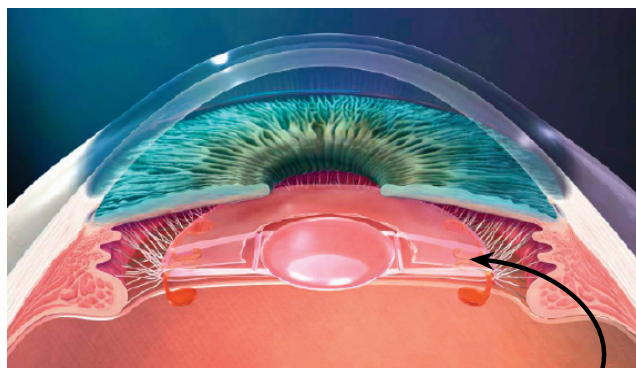
Cataract

As young adults, we have a clear natural lens inside our eyes which helps us to bring in focus what we see. As part of the normal aging process, that clear lens slowly becomes cloudy as the water content and protein structure of the lens changes. The cloudy lens is called a cataract. Besides diminished vision, other symptoms of cataract include worsening glare, which can make activities like driving at night more difficult. If the cataract is severe enough to diminish vision and affect a person's daily activities, then cataract surgery to remove it might be necessary. Modern cataract surgery is performed under a microscope, and tiny incisions are made in the cornea. Through these incisions, the cataract is removed and a clear, plastic lens is carefully inserted to replace the cloudy, natural lens. After the surgery, patients can expect significant improvement in their vision. Indeed, more than 90% of patients regain 20/20 best corrected vision after this remarkable surgery.

At East Bay Eye Specialists, the cataract surgeons have many years of experience performing these pro-

cedures. Over the last few years, additional options for cataract surgery have been introduced, including new kinds of intraocular lens implants. The traditional plastic lens implant is a monofocal lens, which corrects vision at one distance only either distance vision or near vision. This means that glasses are almost always required to see clearly in the distance or up close. Premium intraocular lenses have been developed to reduce this dependence on glasses after cataract surgery by correcting residual nearsightedness, farsightedness, astigmatism and presbyopia. We offer the leading premium lens choices, including toric lenses for correcting astigmatism and the ReStor and Crystalens to correct vision at a variety of distances.

We believe it is most important to help you choose the lens technology that is best for your own individual lifestyle. There is no sensible "one size fits all" approach to custom eye surgery, and our doctors will spend time with you to figure out which options are best for your unique situation.



Intraocular Lens Implant