

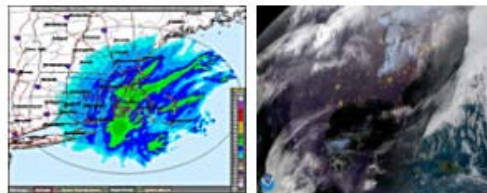


1/30/18 LATITUDE STORM REPORT

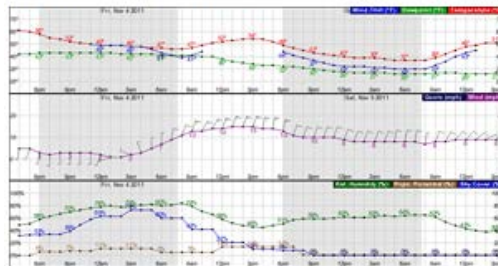
Today 1/30 Early AM to 1/30 1:00 PM

Snow, mainly before 1pm.
High near 29. North wind
13 to 16 mph. Chance of
precipitation is 90%. Total
daytime snow accumulation
of 1 to 3 inches possible.

Radar & Satellite Image



Hourly Weather Forecast



[Hourly Weather Link](#)

Stay Warm, Keith Schifano

LATITUDE BUILD & DESIGN CORP

WINTER STORM
1/30/18

WHAT TO EXPECT:
29°

TAKE EXTRA TIME FOR
YOUR COMMUTE

WE'RE IN THE STORM
SO YOU DON'T HAVE
TO BE

TEXT TO LET US KNOW
YOU NEED HELP
781-548-1300

LATITUDE CORPORATION
SNOW DIVISION

371 Pearl Street
Malden, MA 02148

LatitudeCorporation.com

Keith@LatitudeCorporation.com