

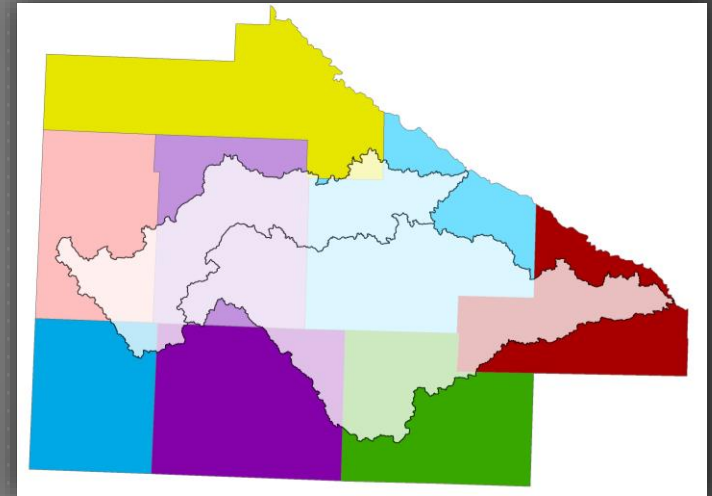
REDWOOD-COTTONWOOD RIVERS CONTROL AREA (RCRCA)

EST. 1983

8 County and 8 SWCD Joint Powers Organization
pursuant to MN Statutes Section 471.59

Partner Counties:

*Brown, Cottonwood, Lincoln, Lyon, Murray,
Pipestone, Redwood and Yellow Medicine*



*Funding consists of \$80,000
from county appropriations*

RCRCA'S MISSION STATEMENT

RCRCA, in cooperation with partner groups and individual landowners, works to

improve water quality, reduce erosion, and provide enhanced recreational opportunities

by providing education, outreach, monitoring and technical assistance within the watershed boundaries.

RCRCA BOARD OF DIRECTORS

(COMMISSIONER / SWCD SUPERVISOR)



- Executive Board Members
3 SWCD / 3 Commissioners

- ▶ **Brown County**
 - ▶ Jeff Veerkamp; Mark Wellner
- ▶ **Cottonwood County**
 - ▶ Larry Anderson; Clark Lingbeek
- ▶ **Lincoln County**
 - ▶ Joe Drietz; Ron Bunjer
- ▶ **Lyon County**
 - ▶ Gary Crowley; Mark Meulebroeck
- ▶ **Murray County**
 - ▶ Lori Gunnink; Paul Posthuma
- ▶ **Pipestone County**
 - ▶ Luke Johnson; Brad Kruisselbrink
- ▶ **Redwood County**
 - ▶ Rick Wakefield; Ed Carter
- ▶ **Yellow Medicine County**
 - ▶ Glen Kack; Tom Remmele

RCRCA STAFF

- ▶ Kerry Netzke, Executive Director
(9 years of service)
- ▶ Joy Bruns, Office Manager
(14 years of service)
- ▶ Bill Moldestad, PE, Watershed Engineer
(22 years of service)
- ▶ Shawn Wohnoutka, Watershed Technician
(21 years of service)



ACTIVITIES

- ▶ Determine watershed “Priority Areas” based on GIS, research, and water quality assessments.
- ▶ Accelerate conservation adoption through securing additional funding for BMP cost share, long-term monitoring, GIS/Outreach and technical assistance.
- ▶ Track and report BMP successes, re-evaluate priority areas, and re-focus efforts.

▶▶▶▶ RCRCA was implementing “One Watershed, One Plan” before the program was invented!

CONTINUING GRANTS:

\$114,517 Watershed Pollutant Load Monitoring Network (MPCA)

2.5-year Amendment through 12/31/2026

*Amended Agreement to be drafted Fall 2026 (2027 - 2028)
to incorporate Surface Water Assessment Grants for 2nd cycles
for the Cottonwood and Redwood watersheds.*

\$ 5,500 Discovery Farms Minnesota; reimbursed time & mileage

\$ 6,605 MN Dept. of Ag Pesticide Monitoring

\$ 400,805 Clean Water Funds - Plum Creek (BWVR) + 319 federal funds

Recently extended through 12/31/2025

\$207,779.31 spent, \$68,252.62 encumbered

Required local match of \$100,201.25 surpassed with \$347,129.36

Goal: 1,470 tons/yr sediment

Current: 1,431.2 tons/year

83.828 ac-ft of storage created

GRANTS

CONTINUING GRANTS:

\$ 648,075 Clean Water Funds - Pell Creek (BWSR) Extended to 12/31/2025

\$346,545.18 spent, \$236,238.83 encumbered

Required 25% local match of \$162,018.75 Current: \$129,367.41

Goal: 300 tons/yr sediment surpassed with 483.29 tons/year

\$ 253,000 Cottonwood-Middle MN One Watershed, One Plan (BWSR)

\$165,985.59 Spent to date

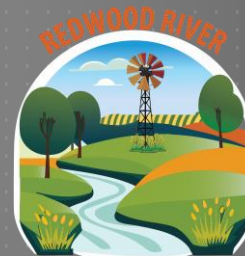
BWSR Southern Region Committee Meeting – 12/9/2024

BWSR Board Approval – January 2025



\$ 238,700 Redwood One Watershed, One Plan (BWSR)

\$48,371.71 Spent to date



\$ 20,000 Middle Minnesota Surface Water Assessment Grant (MPCA)

3 sites: Crow Creek, Wabasha Creek and Spring Creek (Cycle 2 assessments)

\$10,961.69 Spent to date

\$80,000 Appropriation from
8 Member Counties

GRANTS

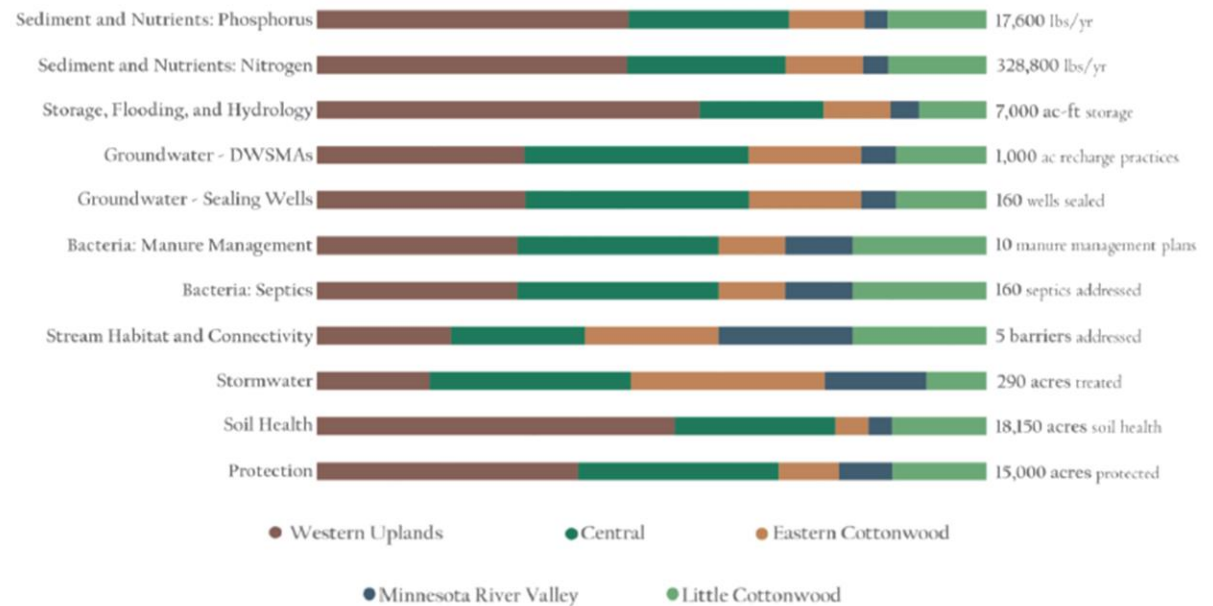
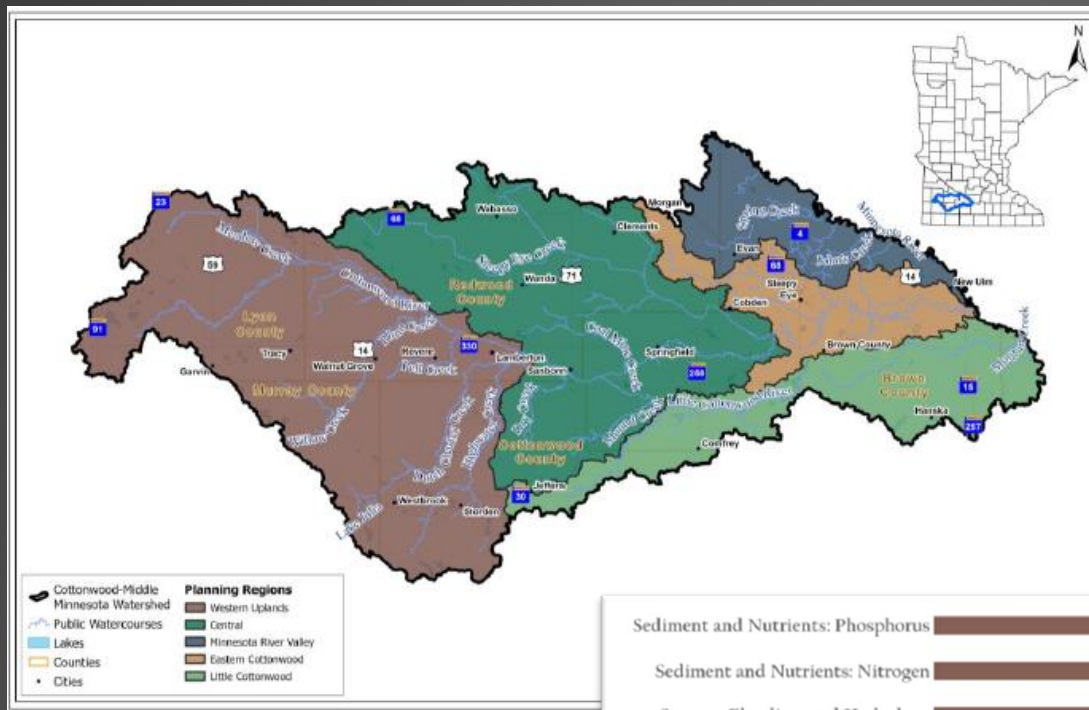
BWSR Southern Region Committee

December 9, 2024

BWSR Board Approval – January 2025

Plan Implementation and Fiscal Administration by RCRC, utilizing existing JPA (similar to GBERBA)

\$1.9 million Implementation Funds every 2 years!



WATER QUALITY MONITORING

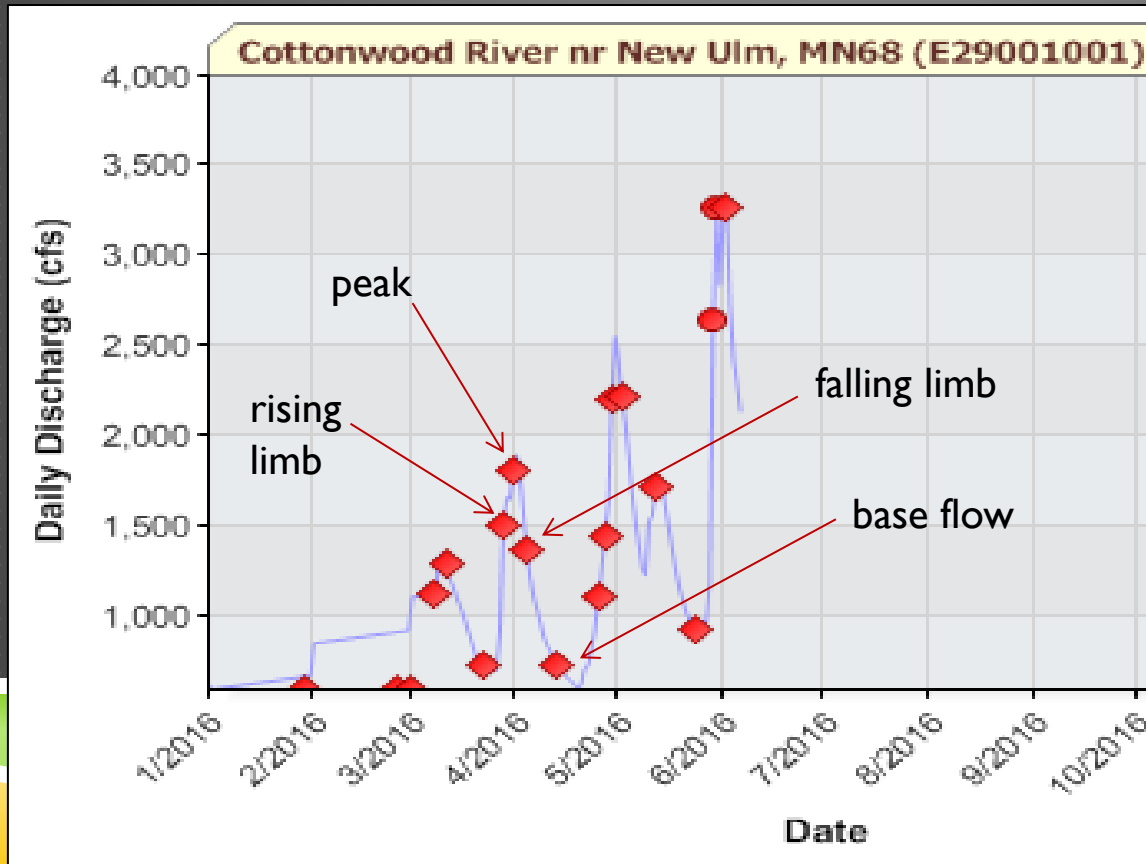
Shawn Vohnoutka conducts sampling for 4 separate grants

- ▶ MPCA's Watershed Pollutant Load Monitoring Network (WPLMN)
214 samples
- ▶ Surface Water Assessment Grant (SWAG)
 - ▶ 3 stream sites in Middle Minnesota watershed
- ▶ MN Department of Ag for pesticide residue
47 samples
4 river sites + 3 lake samples
 - ▶ 36 samples
May – August
- ▶ Discovery Farms (Redwood County)
31 tile and 17 flume samples
Snow melt and storm-based monitoring

345 samples
collected in 2025



MPCA's Watershed Pollutant Load Monitoring Network (WPLMN) continues for the Redwood and Cottonwood watersheds.



- 3 sites in the Cottonwood River watershed

- 3 sites in the Redwood River watershed

- 1 site on the Minnesota River (Morton, MN)

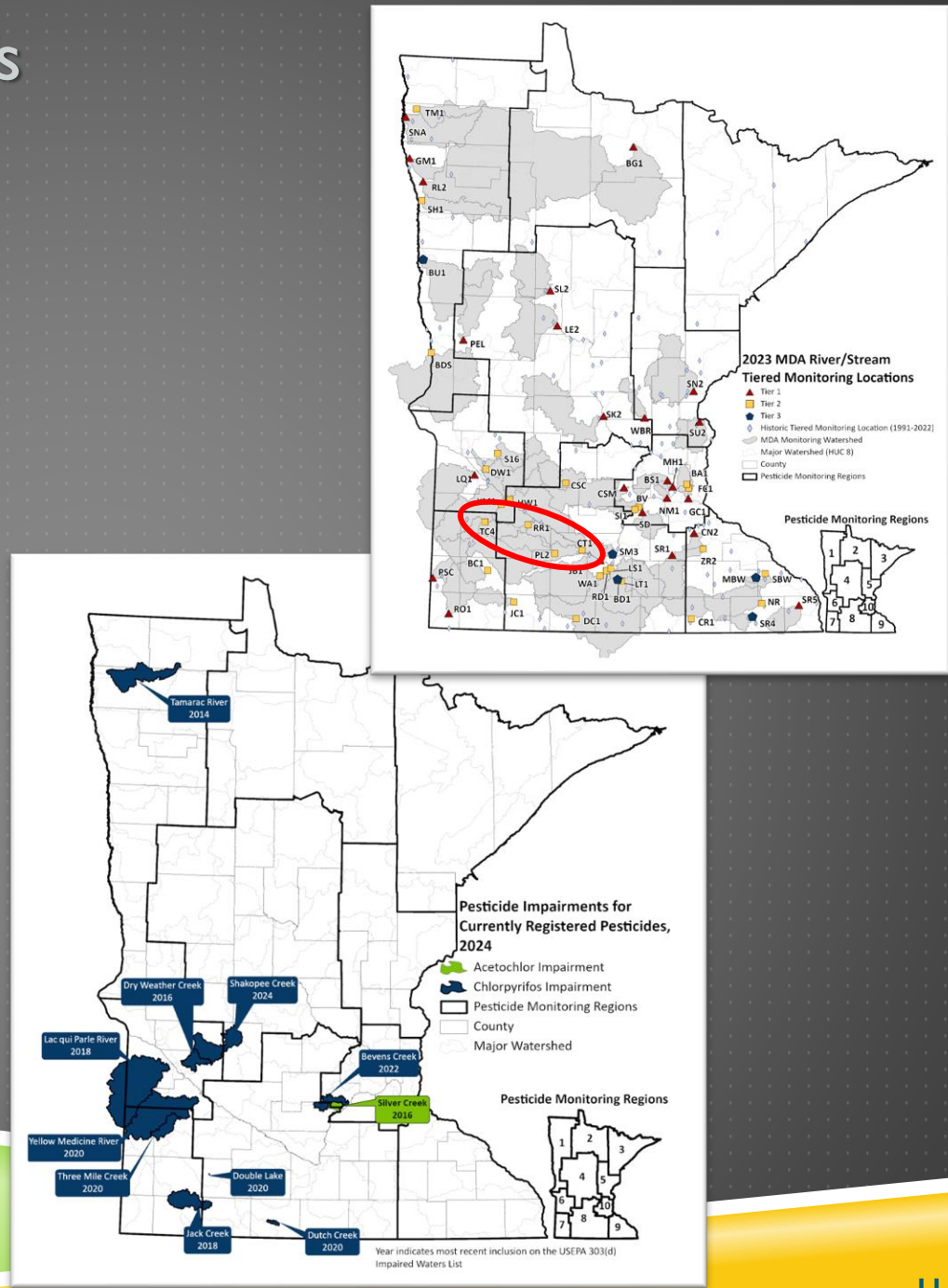
*3 river sites are year-round;
4 river sites from ice-out to
October 31st*

Minnesota Dept. of Ag's Pesticide Monitoring

*May thru August – storm-based
stream sampling of 4 streams, and
Double Lake North (August only)*

With over **35 years** of monitoring
data, the MDA operates one of the
few programs with sufficient long-
term data to evaluate changes in
water quality over time.

Minnesota's pesticide monitoring
program is one of the most
comprehensive in the country and
is regarded as a national leader.



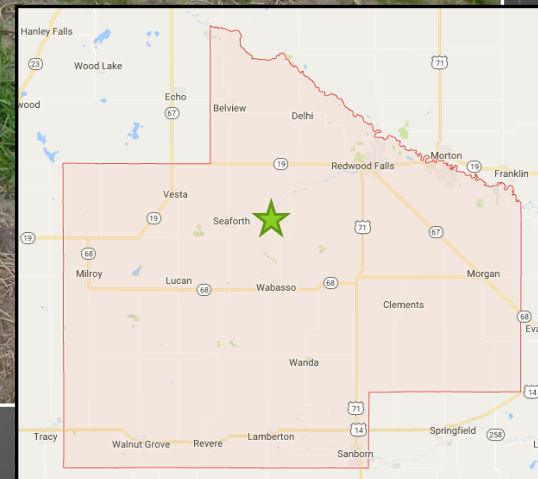
Discovery Farms Minnesota is a farmer-led effort to gather field-scale water quality information from different types of farming systems, in landscapes all across Minnesota.

The goal is to provide practical, credible, site-specific water quality information to enable better farm management.

The program collects accurate measurements of sediment, nitrogen and phosphorus movement over the soil surface and through subsurface drainage tiles. This work leads to a better understanding of the relationship between agricultural management and water quality.



<https://discoveryfarmsmn.org>



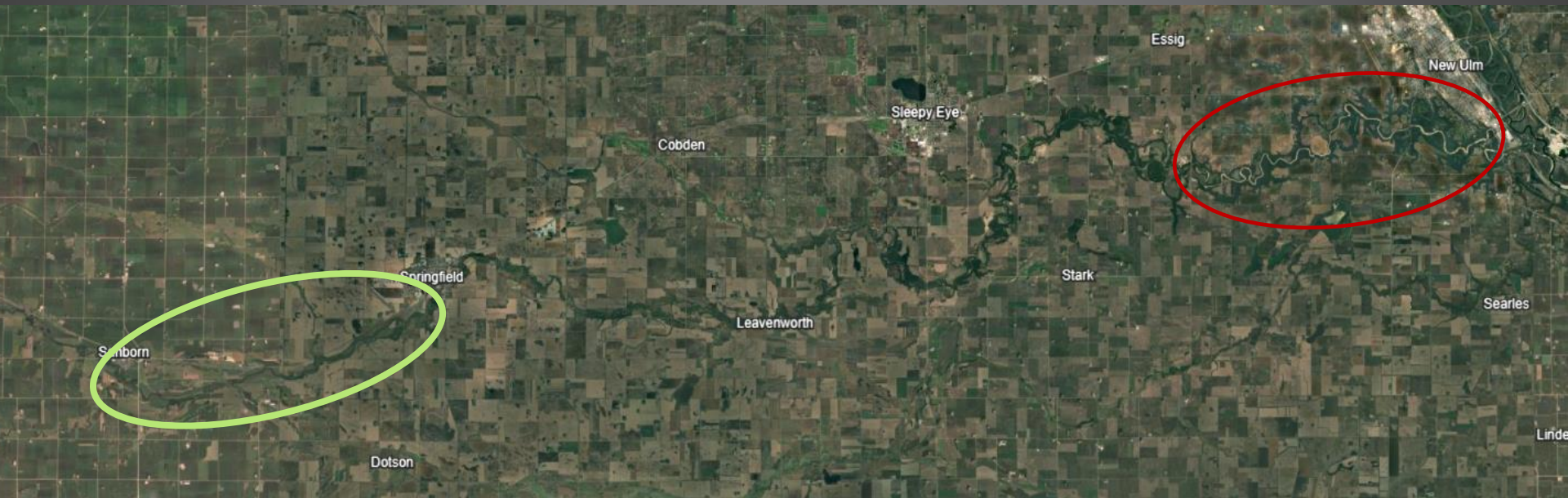


2024 Outreach
Activities

CANOE TRIPS ON THE COTTONWOOD & REDWOOD



NEW ROUTE FOR COTTONWOOD



SPRINGFIELD LOG JAM





You are Here

Log Jam

SEPTEMBER 2024 DRONE FOOTAGE



Video credit: Mathiowetz Construction Co.

YOUTUBE VIDEOS

RCRCA Redwood Cottonwood Rivers Control Area

<https://www.youtube.com/@rcrcaredwoodcottonwooddrive9603>



**Redwood River (RR1) Time Lapse -
3/21/24 to 3/27/24**

1.9K views 11 days ago

Cottonwood River Canoe/Kayak Trip 2024

30 views 12 days ago

**Lake Redwood Dredge time lapse (private
residence)-8/30 to 9/8.**

7 views 2 years ago

Redwood River Ice Out 3/23/19

50 views 4 years ago



The 2-day event provides fun-filled learning about the world around us through demonstrations and student participation.



Topics include: trees, native prairie, ground and surface water, erosion/flooding, soils, wetlands, watersheds, wildlife and much more!

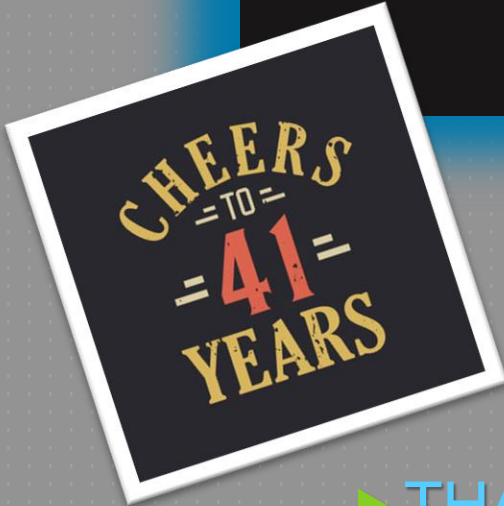
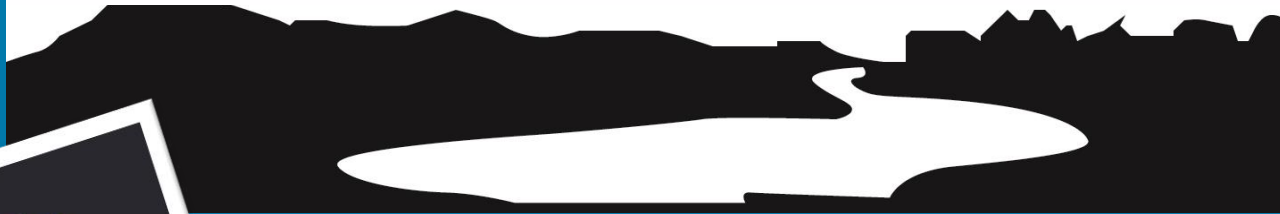
5th & 6th grade students from a 11-county area in late September
260 students at the Stream Table.



SW MN
ENVIRONMENTAL FAIR



Redwood-Cottonwood Rivers Control Area



- For more information about RCRCA, project photos, and updates, check our website at www.rcrca.com

► **THANK YOU** for your continued support!